



SPIRIT POWERSTATION

By Soundcraft

TYPICAL SPECIFICATIONS

T.H.D.

Mic, Line or stereo input to
Main Outputs, +20dB at outputs,
any input gain < 0.009%

Crosstalk

Fader Attenuation	100dB @1kHz
Aux Send Attenuation	80dB @1kHz
Stereo Separation	70dB @1kHz

Noise

Measured RMS, 22Hz to 22kHz bandwidth

Aux Outputs	-83dBu
Main Outputs	-80dBu

E.I.N.

Microphone Input, Maximum Gain,
terminated 150R -129dBu

Max. Gain to Main Outputs

Mic Input	74dB
Line Input	54dB
Stereo Input	32dB
Stereo Return & 2Track Return	12dB

Maximum Input Levels

Mic Input	+21dBu
Line Input	> 30dBu
Stereo Input	+26dBu
Stereo Return & 2Track Return	> 30dBu

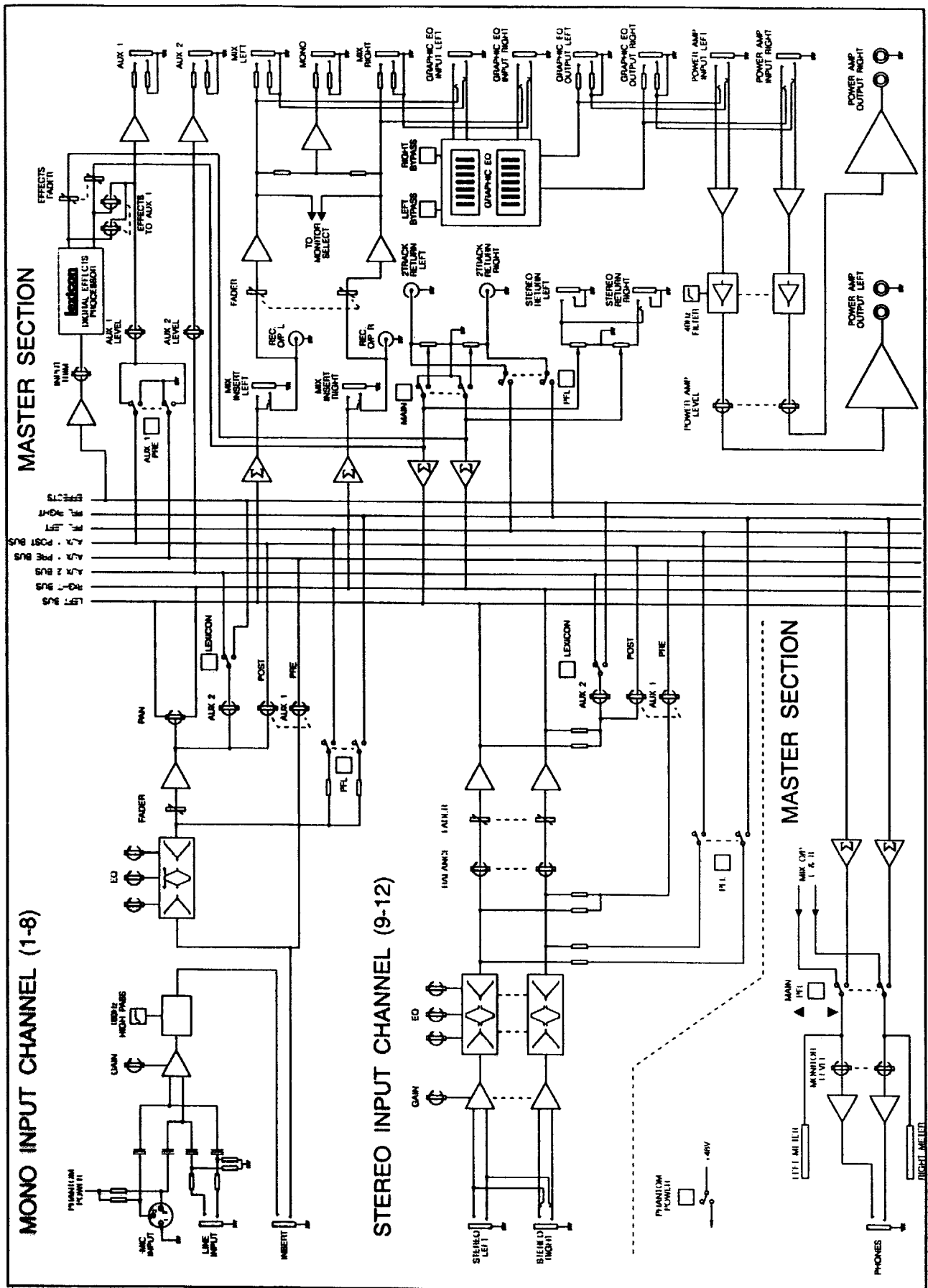
Maximum Output Levels

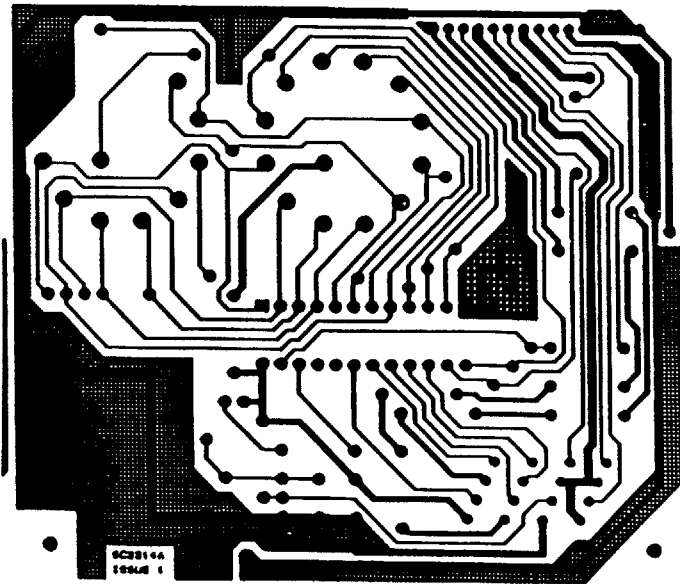
Any Output	+22dBu
------------	--------



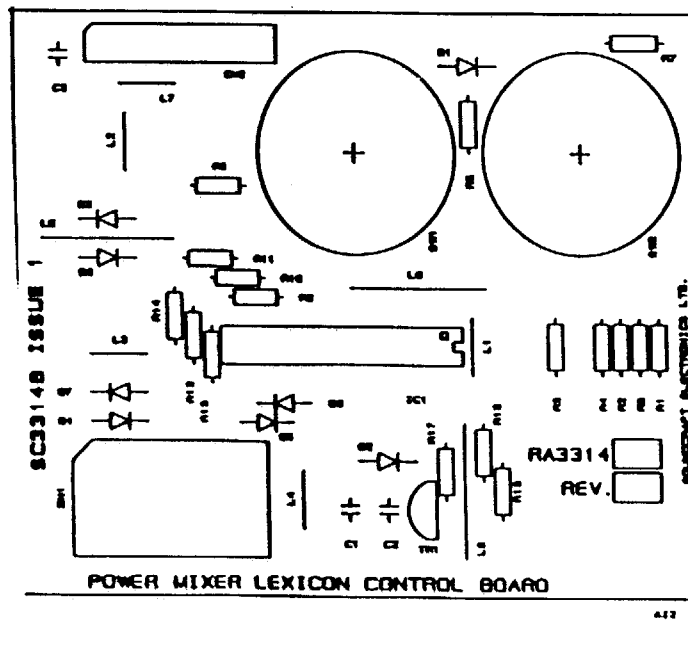
SPIRIT POWERSTATION

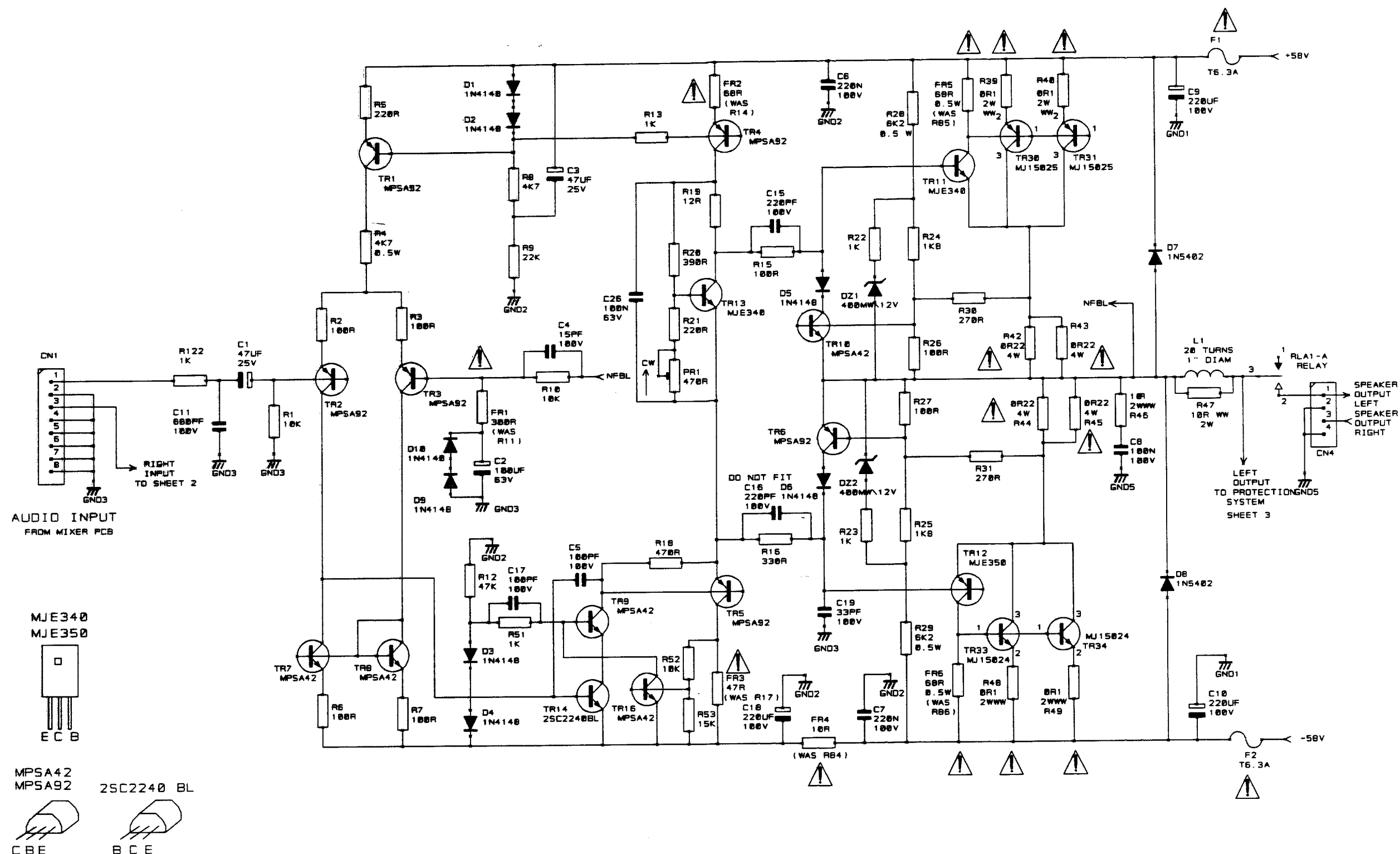
By Soundcraft





SC3314A ISSUE 1 17-8-94
POWER MIXER LEXICON CONTROL BOARD





SOUNDCRAFT OWNS THE COPYRIGHT OF THIS DRAWING WHICH IS NOT TO BE COPIED, REPRODUCED OR DISCLOSED, IN PART OR IN WHOLE TO A THIRD PARTY WITHOUT WRITTEN PERMISSION.

NOTES

NOTES

1) WHEN SERVICING, FUSIBLE RESISTORS (DESIGNATED FR) MUST BE REPLACED WITH SAME TYPE.

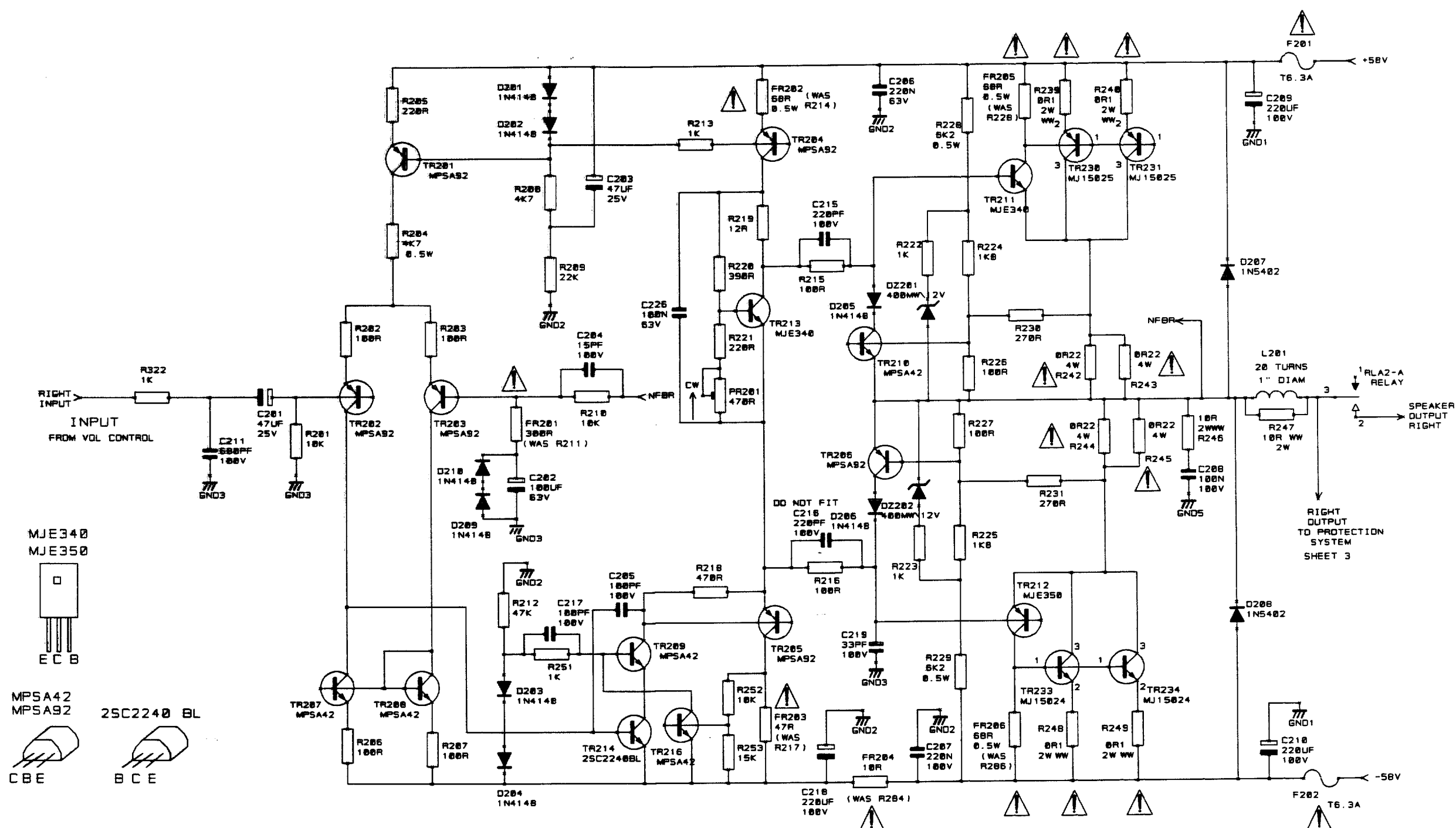
SOUNDCRAFT
HARMAN INT. INDUSTRIES LTD.
CRANBORNE HOUSE,
POTTERS BAR,
HERTS., EN6 3JN.
TEL: 01787 665888
FAX: 01787 660482

DRN. 05

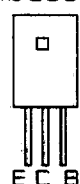
TITLE STEREO POWER AMP. LEFT CHAN.

ORG NO. ED3312A

SHT. 1 OF 3



MJE340
MJE350



MP5A42
MP5A92



25C2240 BL



SOUNDCRAFT OWNS THE
COPYRIGHT OF THIS DRAWING
WHICH IS NOT TO BE COPIED,
REPRODUCED OR DISCLOSED, IN
OR IN WHOLE TO A THIRD PARTY
WITHOUT WRITTEN PERMISSION.

NOTES

NOTES

- 1) RESISTORS DESIGNATED FR MUST BE REPLACED WITH CORRECT FUSIBLE RESISTOR WHEN SERVICING

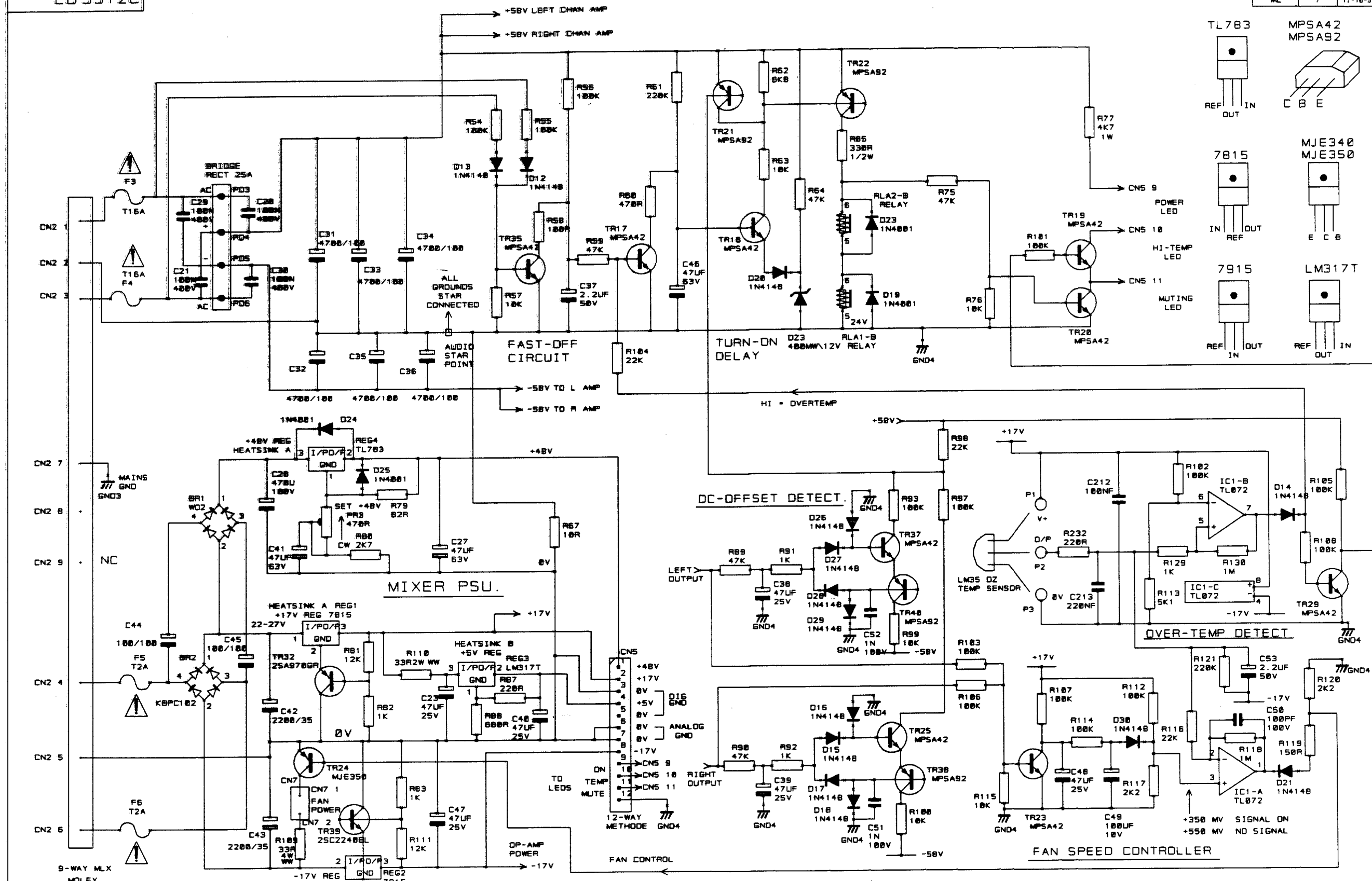
SOUNDCRAFT
HARMAN INT. INDUSTRIES
CRANBORNE HOUSE,
CRANBORNE BAR,
POTTERS BAR,
HERTS., EN6 3JN.
TEL: 01707 665000
FAX: 01707 660482

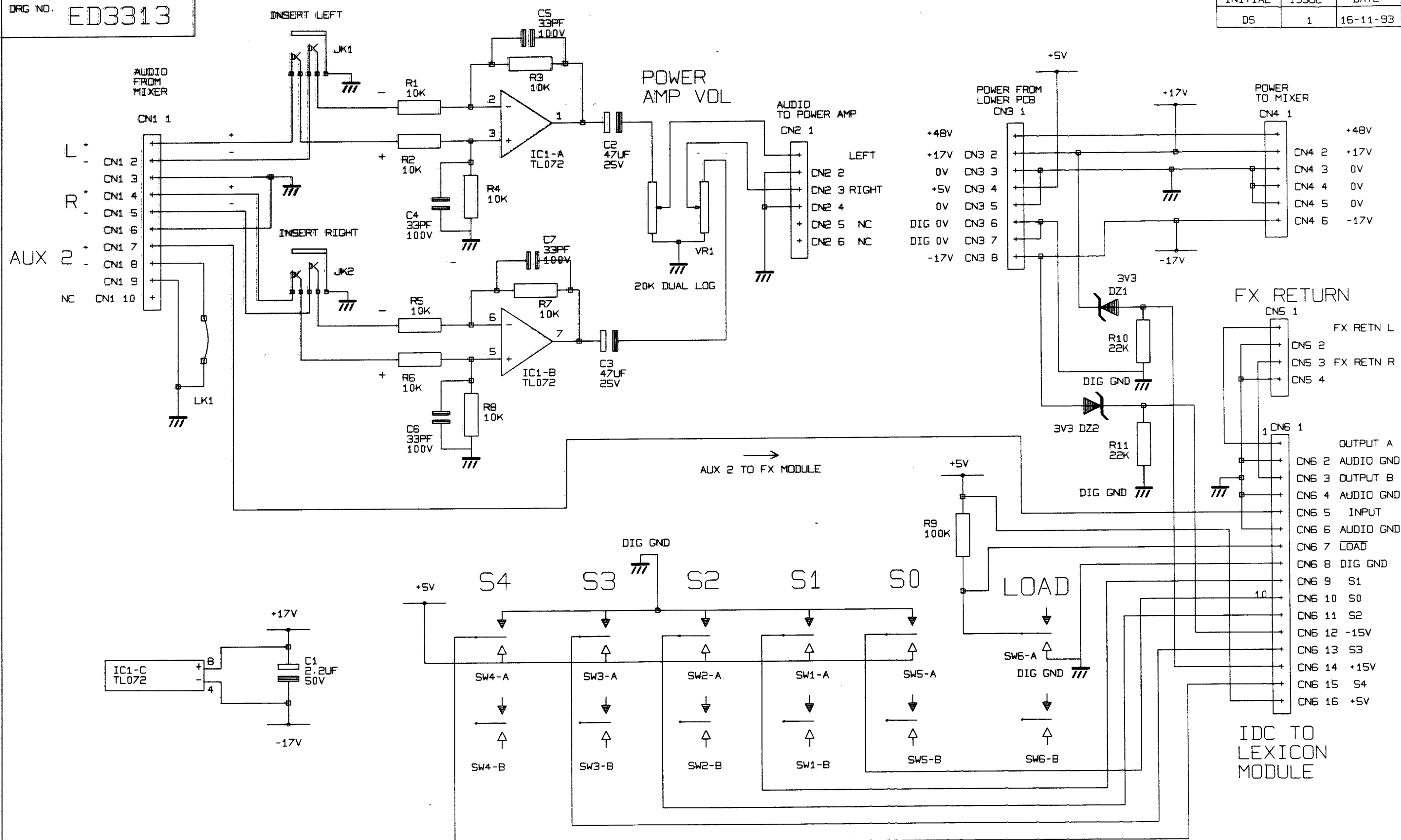
TO: DAN. OS

TITLE	STEREO POWER AMP. RIGHT CHAN
-------	---------------------------------

ORG NO. ED 33128

SHT.2 OF 3





SOUNDCRAFT ELECTRONICS LTD OWNS
THE COPYRIGHT OF THIS DRAWING
WHICH IS NOT TO BE COPIED,
REPRODUCED OR DISCLOSED, IN PART
OR IN WHOLE TO A THIRD PARTY
WITHOUT WRITTEN PERMISSION.

NOTES

SOUNDCRAFT ELECTRONICS LTD.
CRANBORNE HOUSE,
CRANBORNE INDUSTRIAL ESTATE,
CRANBORNE ROAD,
POTTERS BAR,
HERTS., EN6 3JN.
TEL: 0707 665000
FAX: 0707 660482

DRN.

DS

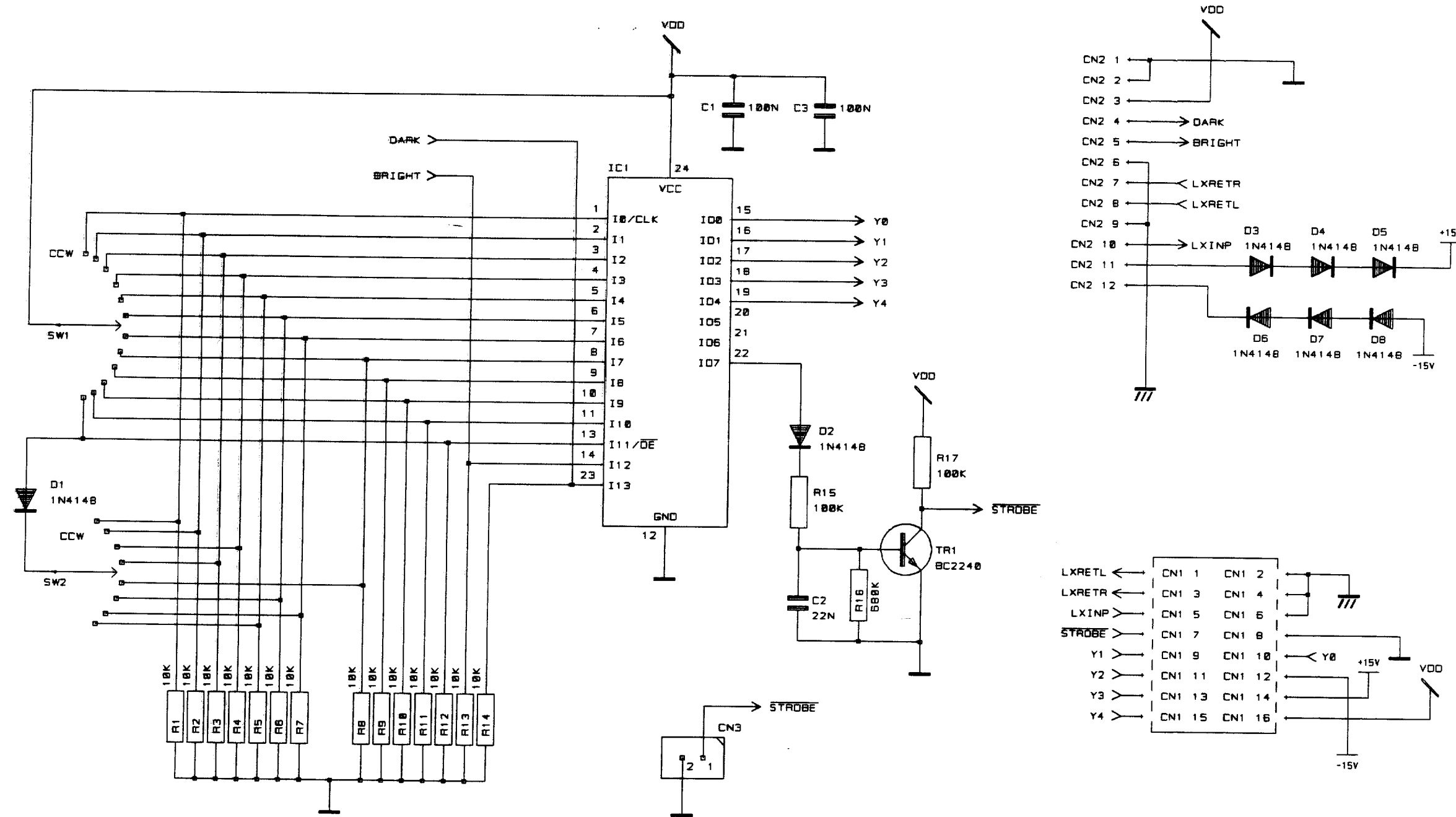
TITLE

POWERED MIXER
ADAPTER BOARD.

DRG NO.

ED3313

SHT. 1 OF 1



SOUNDCRAFT ELECTRONICS LTD OWNS
THE COPYRIGHT OF THIS DRAWING
WHICH IS NOT TO BE COPIED,
REPRODUCED OR DISCLOSED, IN PART
OR IN WHOLE TO A THIRD PARTY
WITHOUT WRITTEN PERMISSION.

NOTES

SOUNDCRAFT ELECTRONICS LTD.
CRANBORNE HOUSE,
CRANBORNE INDUSTRIAL ESTATE,
CRANBORNE ROAD,
POTTERS BAR,
HERTS., EN8 3JN.
TEL: 0707 665000
FAX: 0707 660482

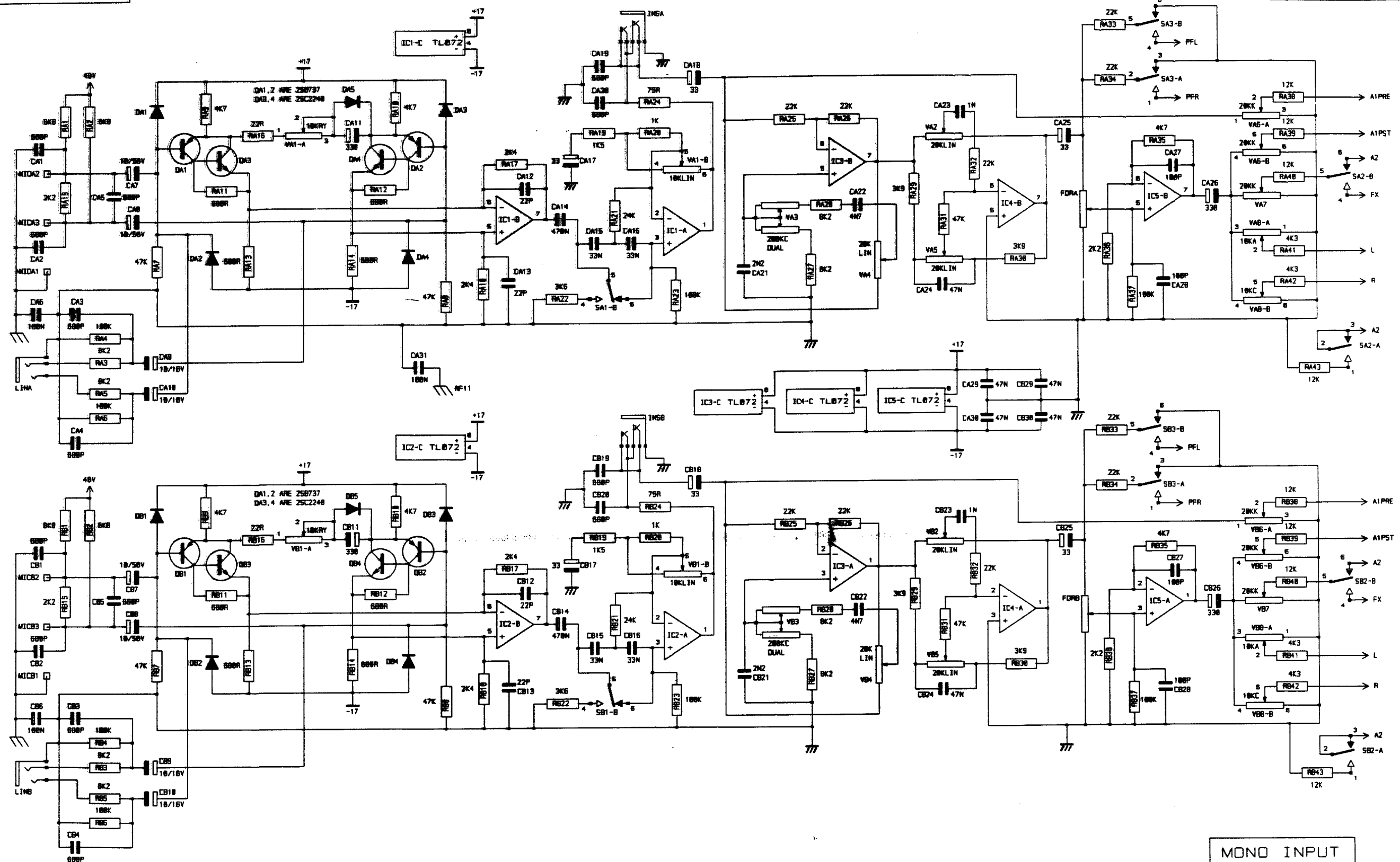
DRN.

GB

TITLE
POWER STATION
LEXICON CONTROL BOARD

DRG NO. ED 3314

SHT 1 OF 1



SOUNDCRAFT ELECTRONICS LTD OWNS
THE COPYRIGHT OF THIS DRAWING
WHICH IS NOT TO BE COPIED,
REPRODUCED OR DISCLOSED, IN PART
OR IN WHOLE TO A THIRD PARTY
WITHOUT WRITTEN PERMISSION.

NOTES

NOTES

SOUNDCRAFT ELECTRONICS LTD.
CRANBORNE HOUSE,
CRANBORNE INDUSTRIAL ESTATE,
CRANBORNE ROAD,
POTTERS BAR,
HERTS., EN8 3JN
TEL: 0787 665000
FAX: 0787 668482

DRN. GHB

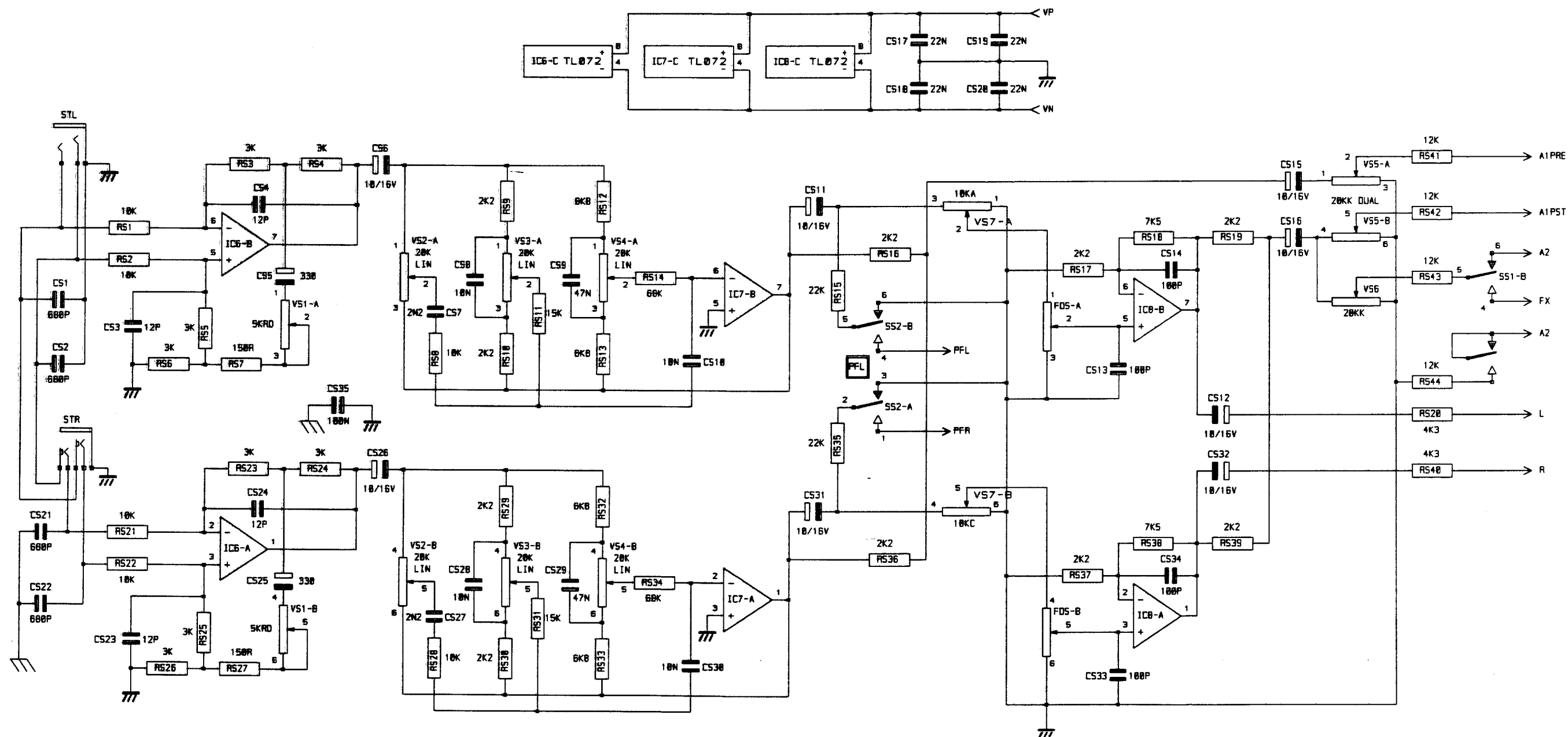
TITLE

POWER AMP
MAIN BOARD

DRG NO.

ED3316A

SHT. 1 OF 6



STEREO INPUT

SOUNDCRAFT ELECTRONICS LTD. OWNS THE COPYRIGHT OF THIS DRAWING WHICH IS NOT TO BE COPIED, REPRODUCED OR DISCLOSED, IN PART OR IN WHOLE TO A THIRD PARTY WITHOUT WRITTEN PERMISSION.

NOTES

NOTES

SOUNDCRAFT ELECTRONICS LTD.
CRANBORNE HOUSE,
CRANBORNE INDUSTRIAL ESTATE,
CRANBORNE ROAD,
POTTERS BAR,
HERTS. EN6 3JN
TEL: 0707 665000
FAX: 0707 660482

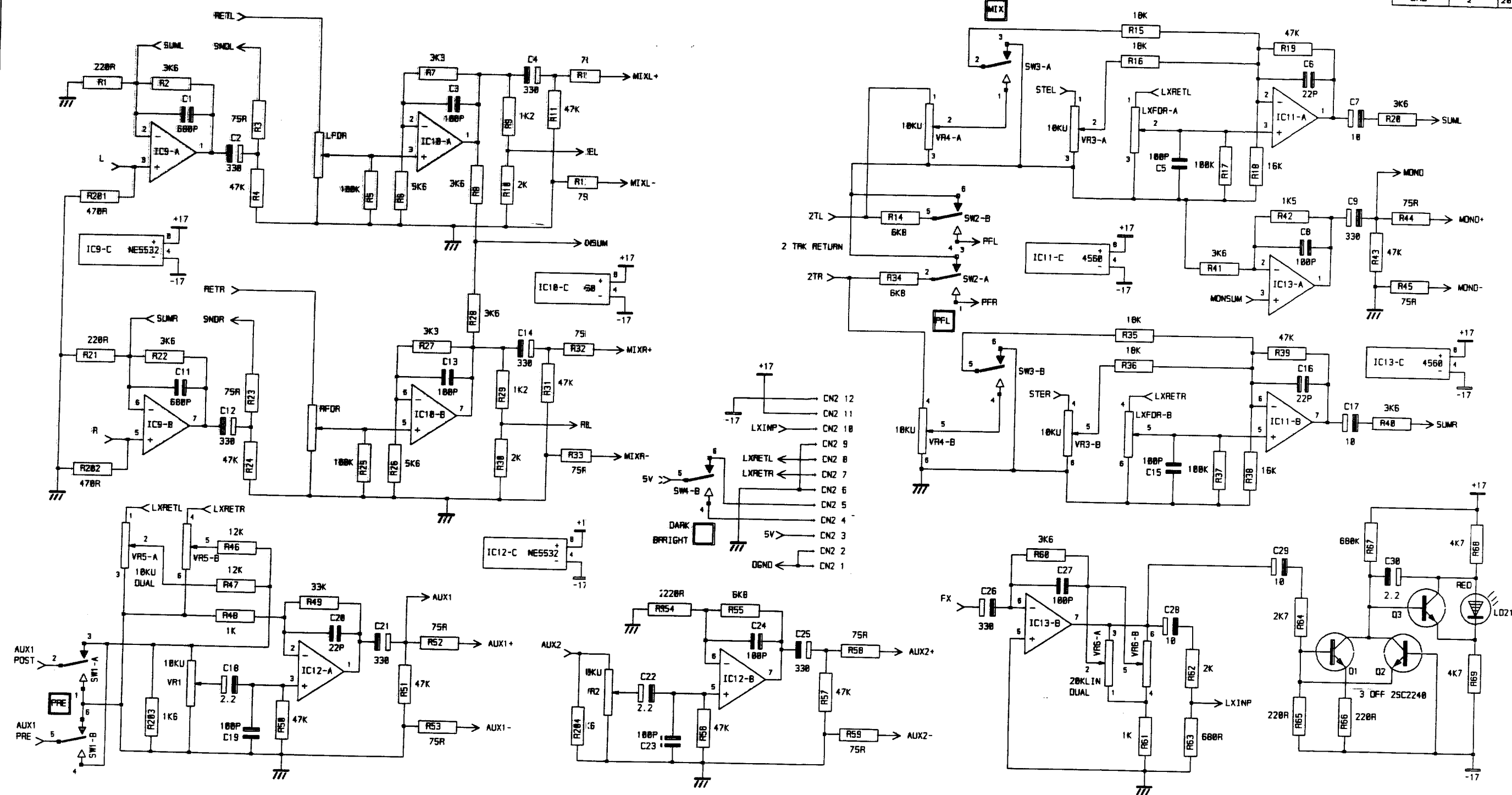
DRN. GHB

TITLE

POWER AMP
MAIN BOARD

DRG NO. ED 3316B

SHT. 2 OF 6



MASTER 1

SOUNDCRAFT ELECTRONICS LTD. OWNS THE COPYRIGHT OF THIS DRAWING WHICH IS NOT TO BE COPIED, REPRODUCED OR DISCLOSED, IN PART OR IN WHOLE TO A THIRD PARTY WITHOUT WRITTEN PERMISSION.

NOTES

NOTES

SOUNDCRAFT ELECTRONICS LTD.
CRANBORNE HOUSE,
CRANBORNE INDUSTRIAL ESTATE,
CRANBORNE ROAD,
POTTERS BAR,
HERTS. EN6 3JN
TEL: 0707 665000
FAX: 0707 660402

DRN. GHB

TITLE

POWER AMP
MAIN BOARD

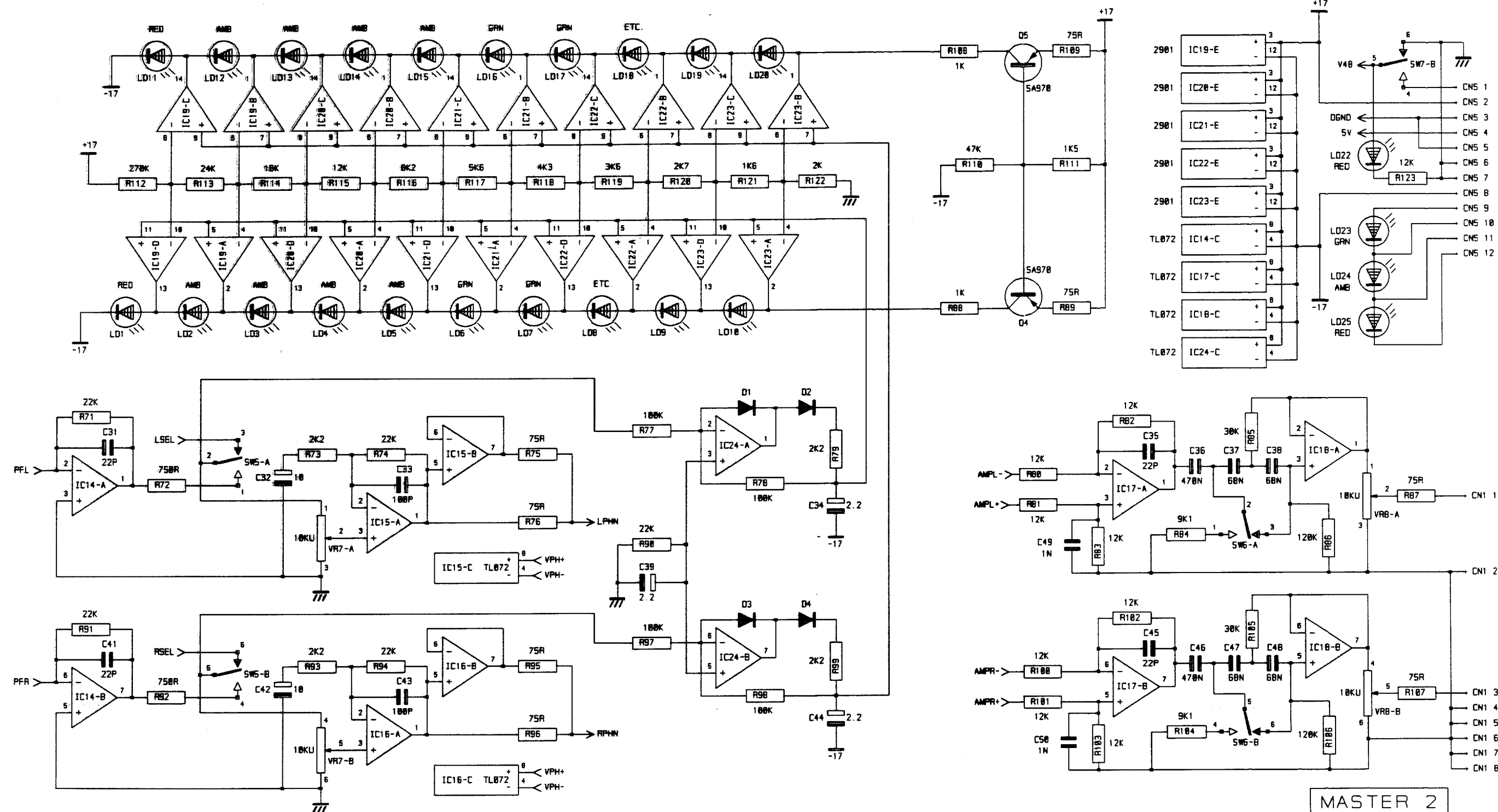
DRG NO.

ED 3316C

SHT. 3 OF 6

OWS NO. ED 33160

INITIAL	ISSUE	DATE
GHB	2	20-12-94



SOUNDCRAFT ELECTRONICS LTD. OWNS THE COPYRIGHT OF THIS DRAWING WHICH IS NOT TO BE COPIED, REPRODUCED OR DISCLOSED, IN PART OR IN WHOLE TO A THIRD PARTY WITHOUT WRITTEN PERMISSION.

NOTES

NOTES

SOUNDCRAFT ELECTRONICS LTD.
CRANBORNE HOUSE,
CRANBORNE INDUSTRIAL ESTATE,
CRANBORNE ROAD,
POTTERS BAR,
HERTS. EN6 3JN
TEL: 0707 665000
FAX: 0707 660482

DRN. GHB

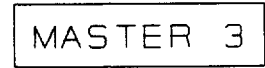
TITLE

POWER AMP
MAIN BOARD

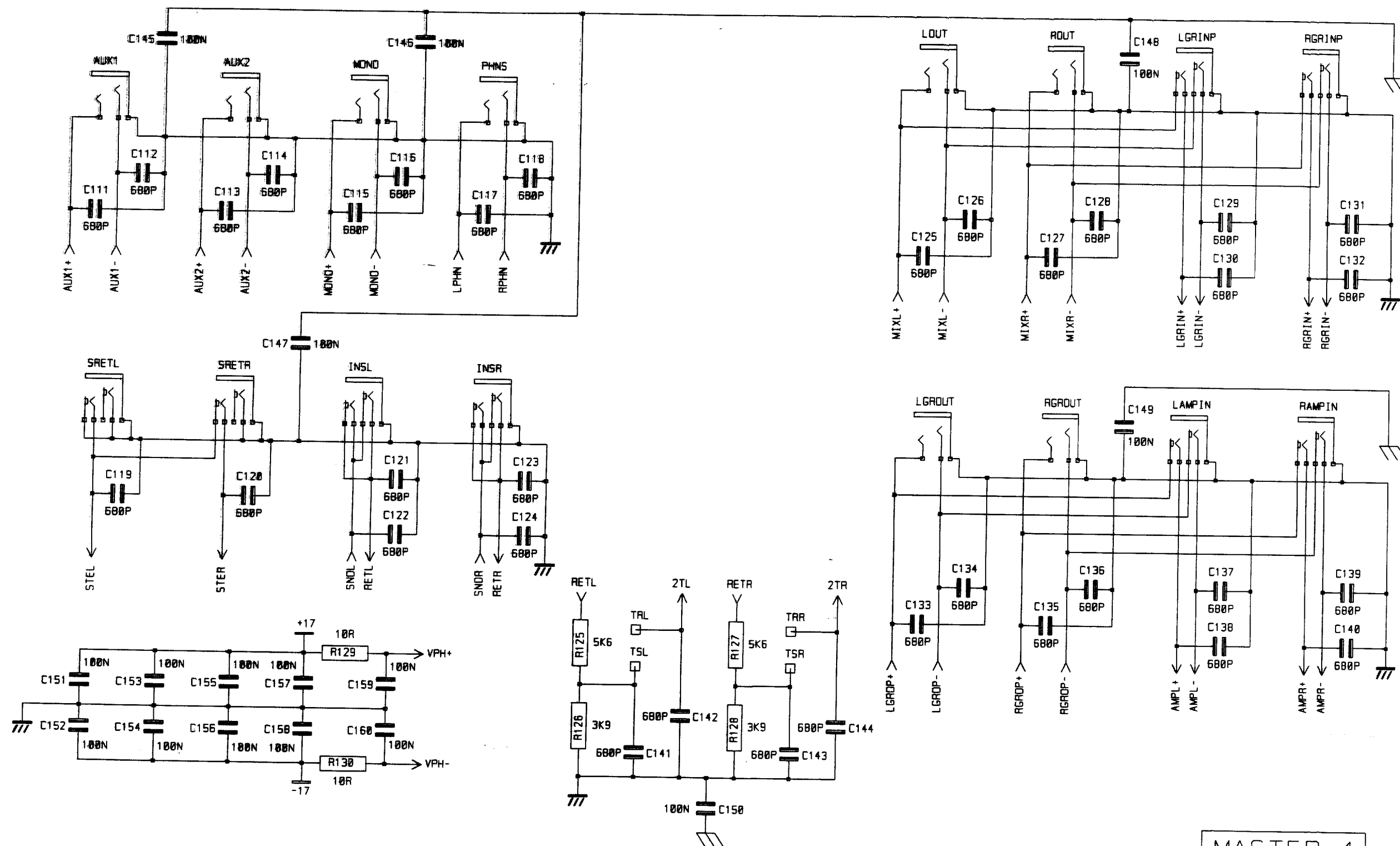
ORG NO.

ED 33160

SHT. 4 OF 6



SHT. 5 OF 6



MASTER 4

SOUNDCRAFT ELECTRONICS LTD OWNS
THE COPYRIGHT OF THIS DRAWING
WHICH IS NOT TO BE COPIED,
REPRODUCED OR DISCLOSED, IN PART
OR IN WHOLE TO A THIRD PARTY
WITHOUT WRITTEN PERMISSION.

NOTES

SOUNDCRAFT ELECTRONICS LTD.
CRANBORNE HOUSE,
CRANBORNE INDUSTRIAL ESTATE,
CRANBORNE ROAD,
POTTERS BAR,
HERTS., EN6 3JN.
TEL: 0707 665000
FAX: 0707 660482

ORN.

GHB

TITLE

POWER AMP
MAIN BOARD

ORG NO.

ED 3316F

SHT. 6 OF 6

SCORE

P1
P2
P3

SC3312 ISSUE 3

STEREO POWER AMP PCB

SCORE

2-OZ COPPER

SC3312 ISSUE 3

STEREO POWER AMP PCB
CP3312 ISSUE 3 13-7-93

WARNING: HT $\pm 60V$ HIGH ENERGY STORAGE.

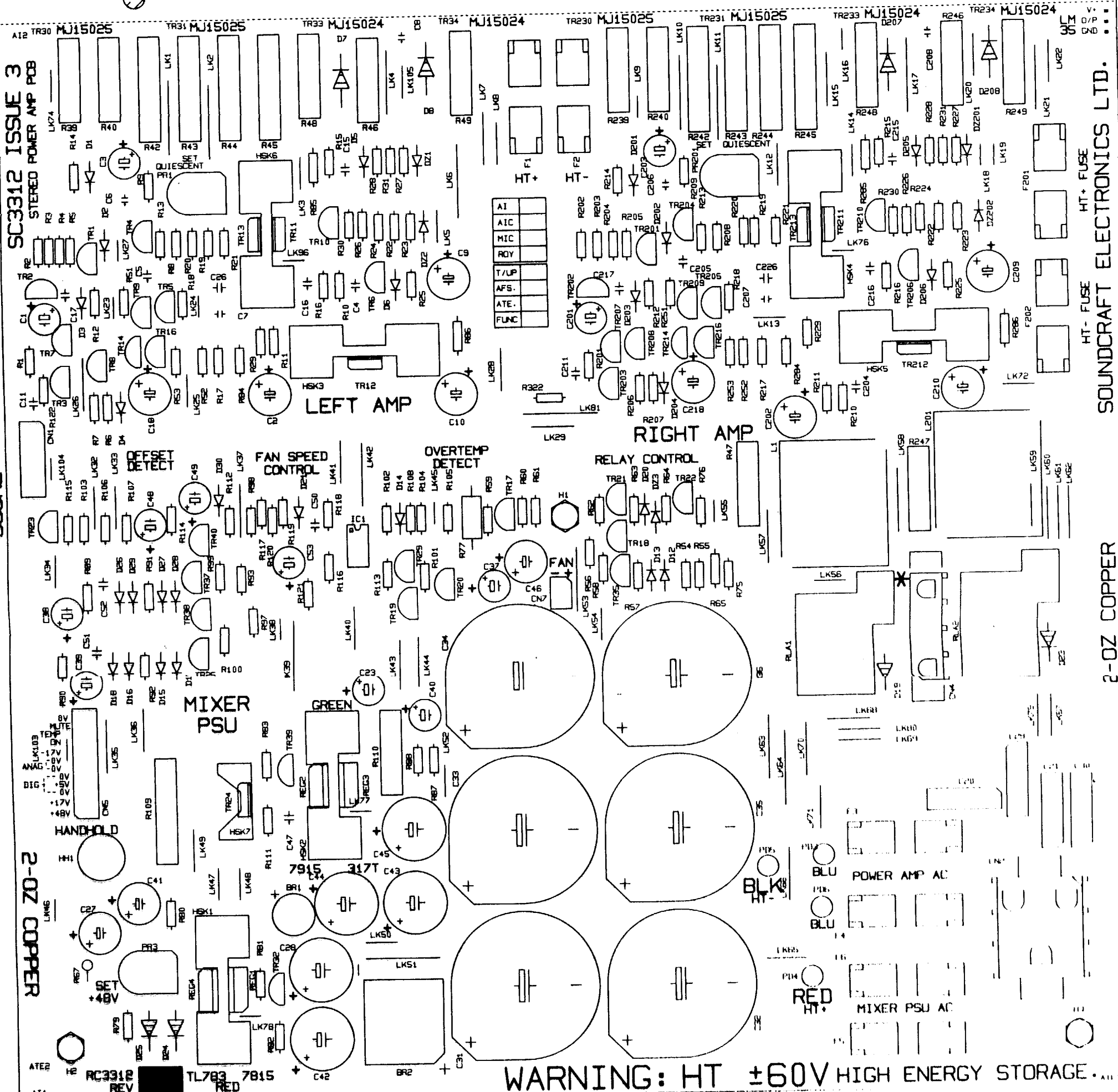
SCORE

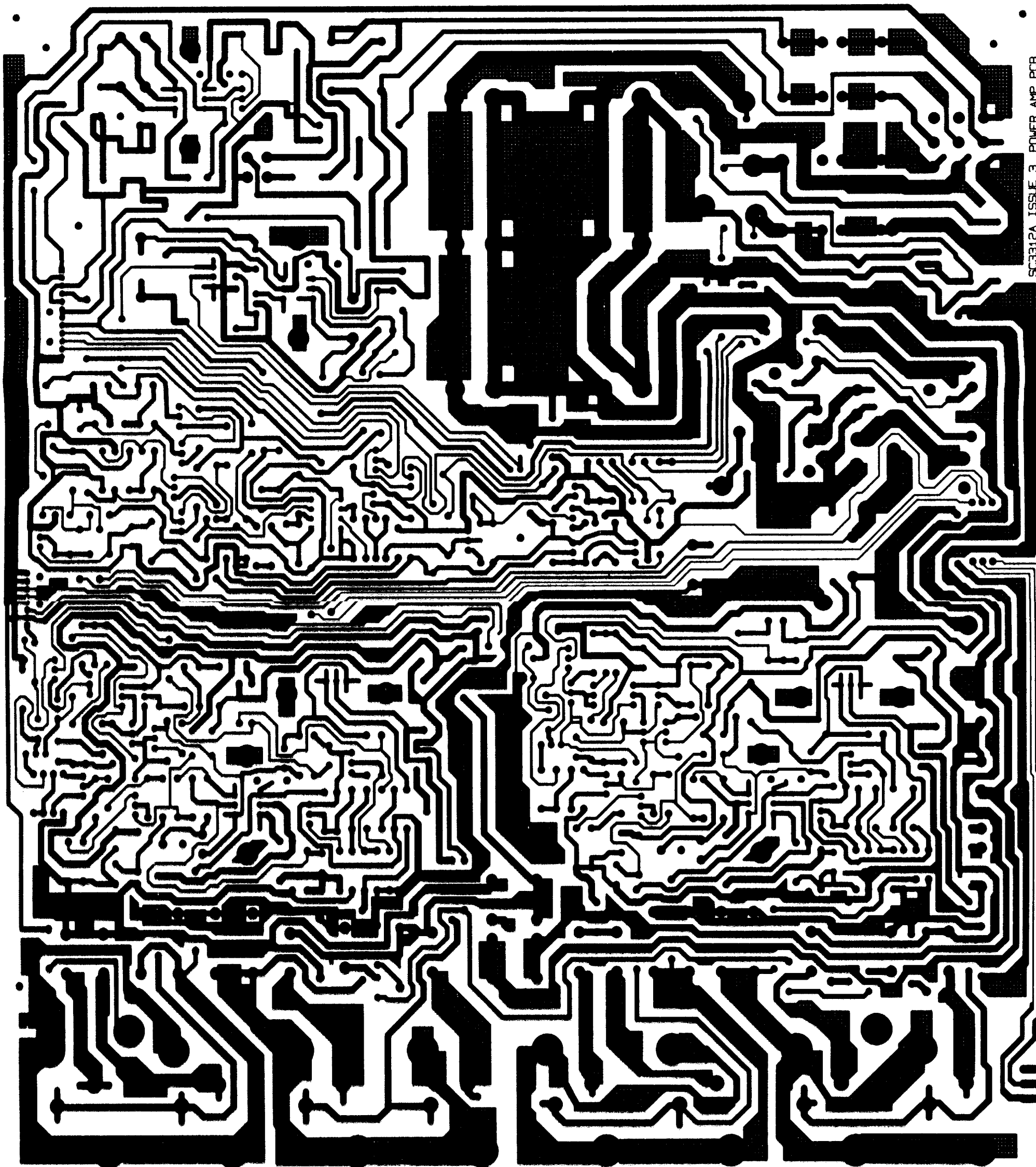
STEREO POWER AMP. BOARD

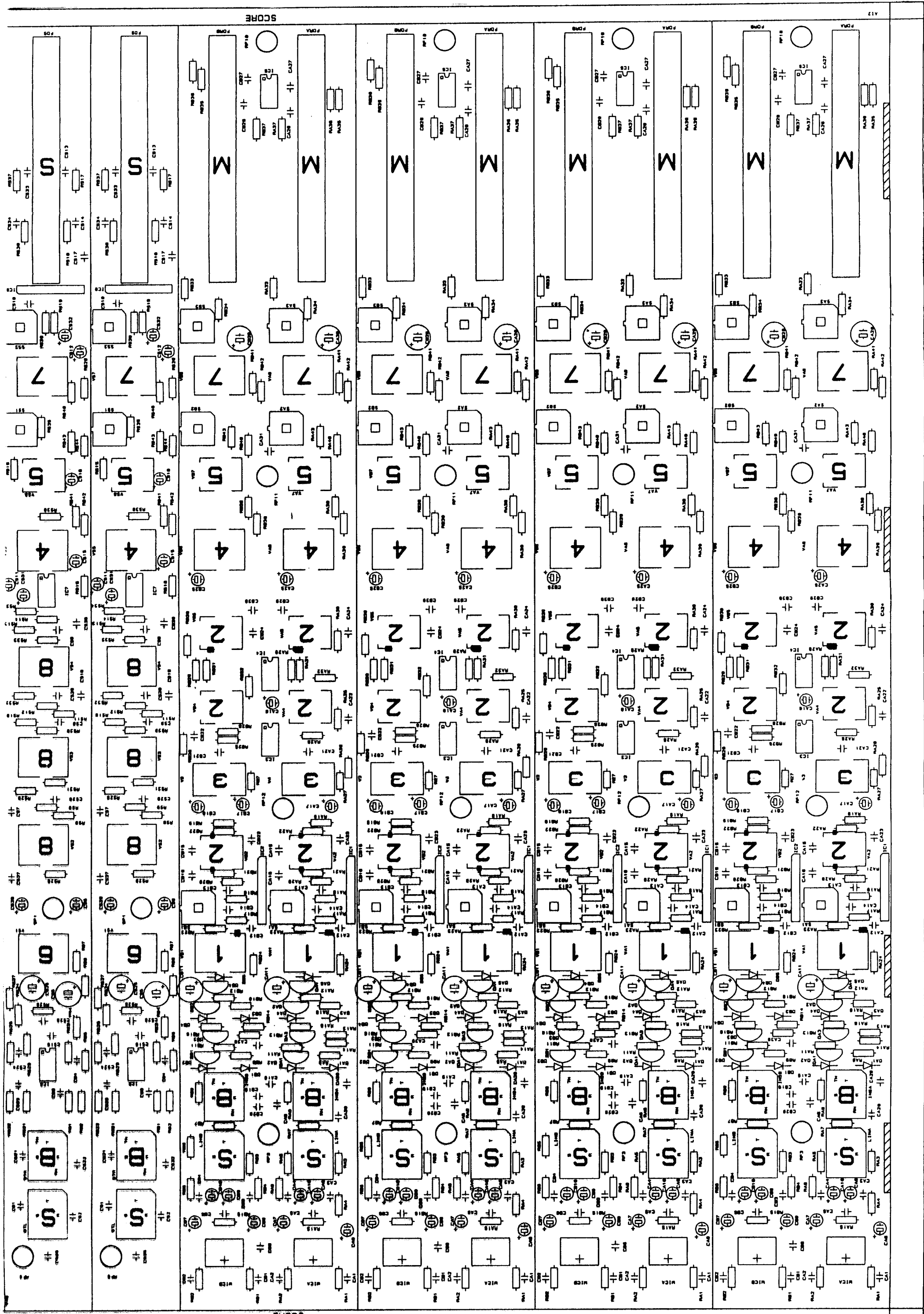
SOUND CRAFT ELECTRONICS LTD.

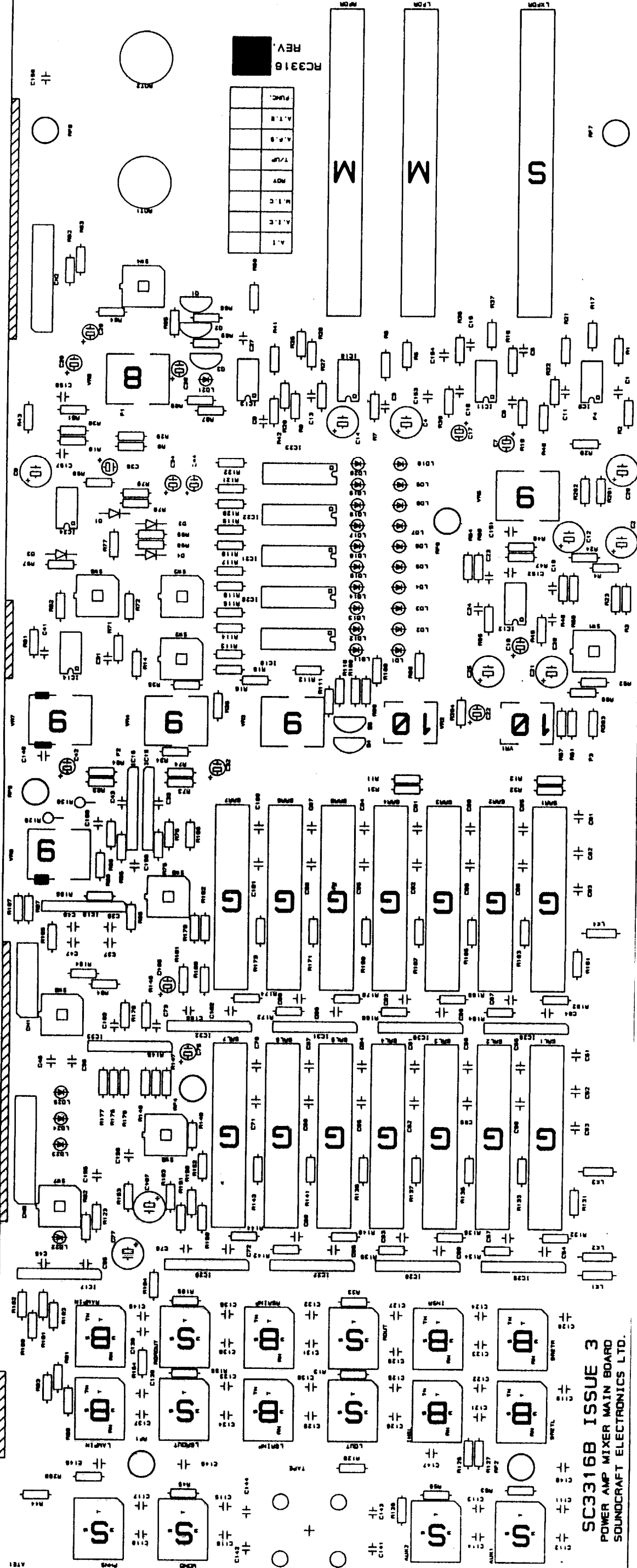
2-OZ COPPER

SCORE



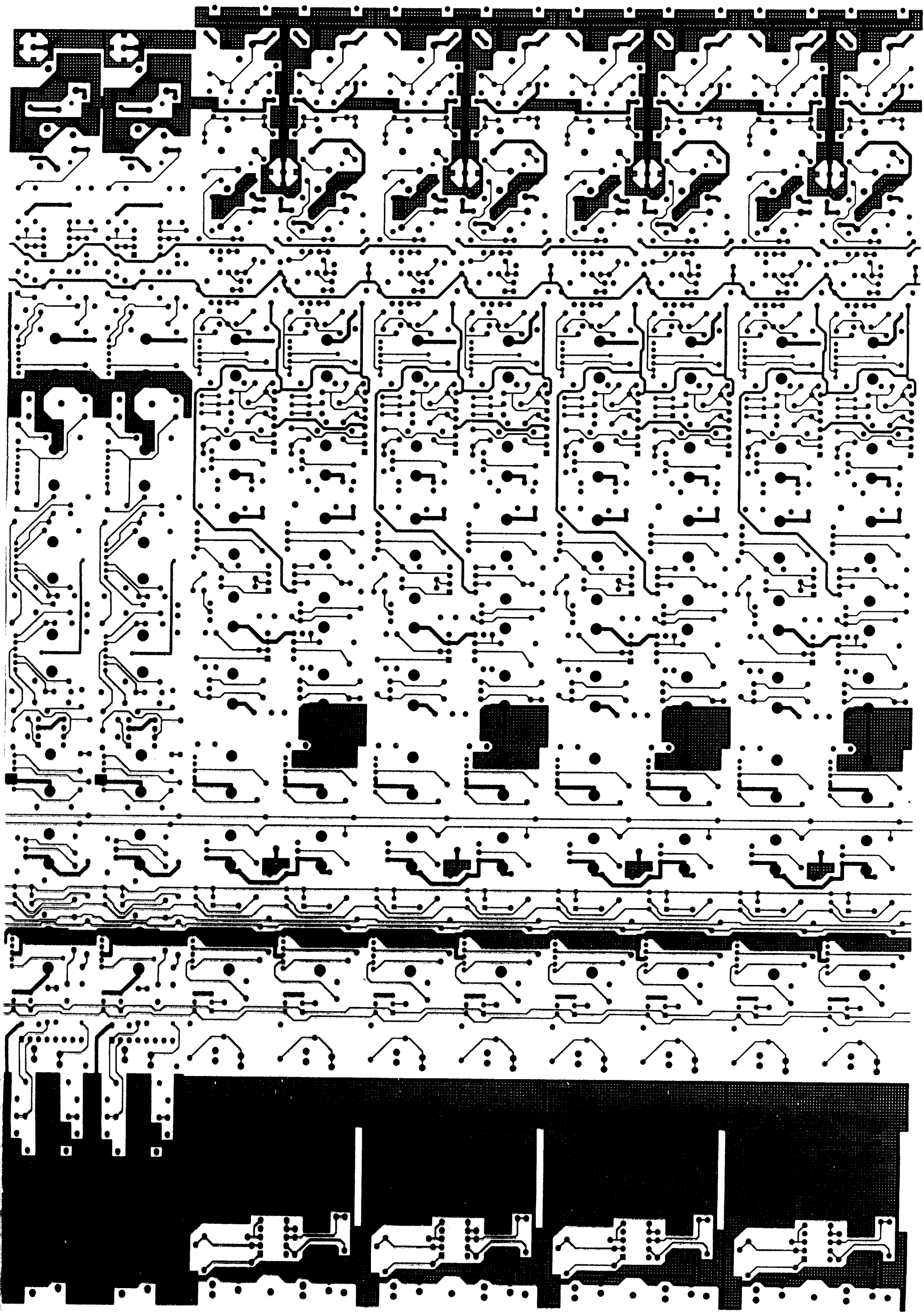




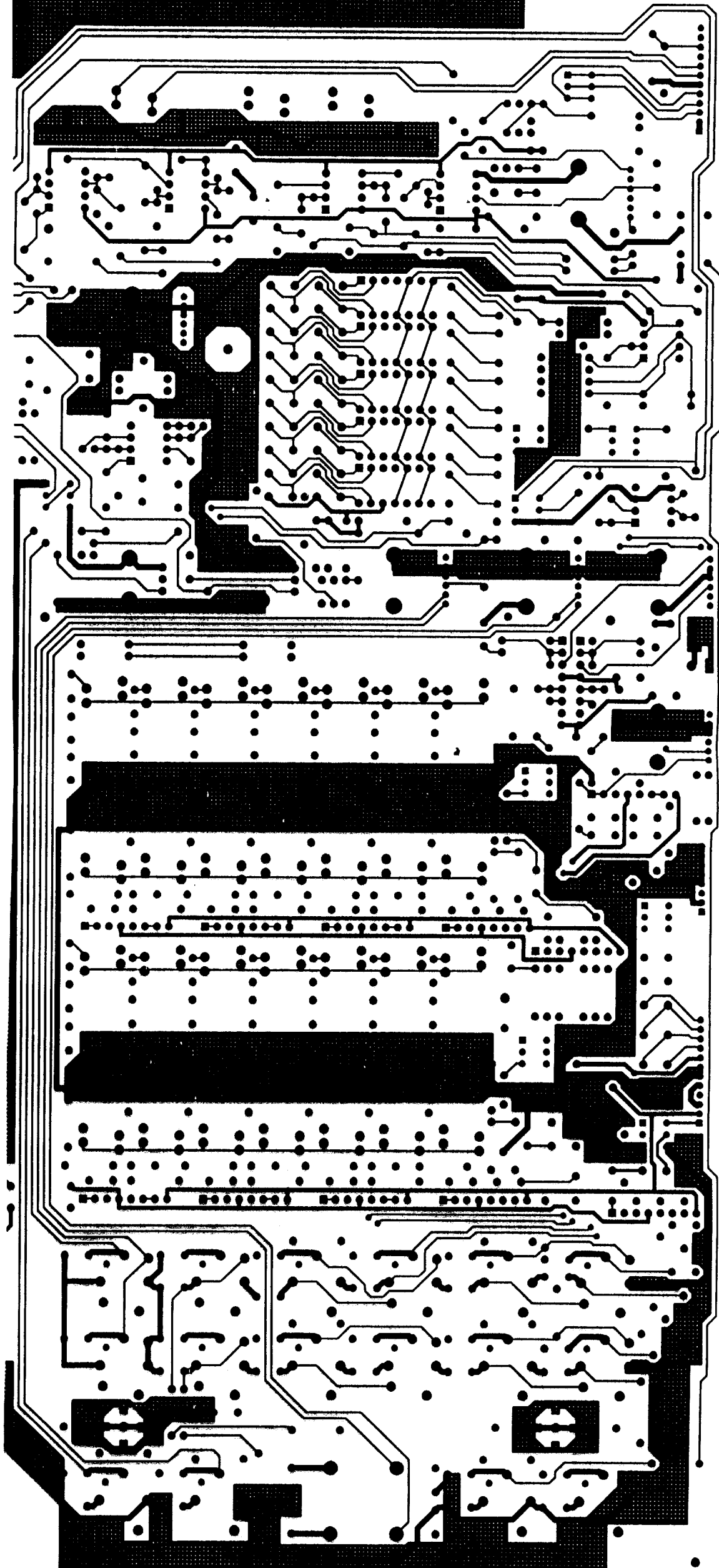


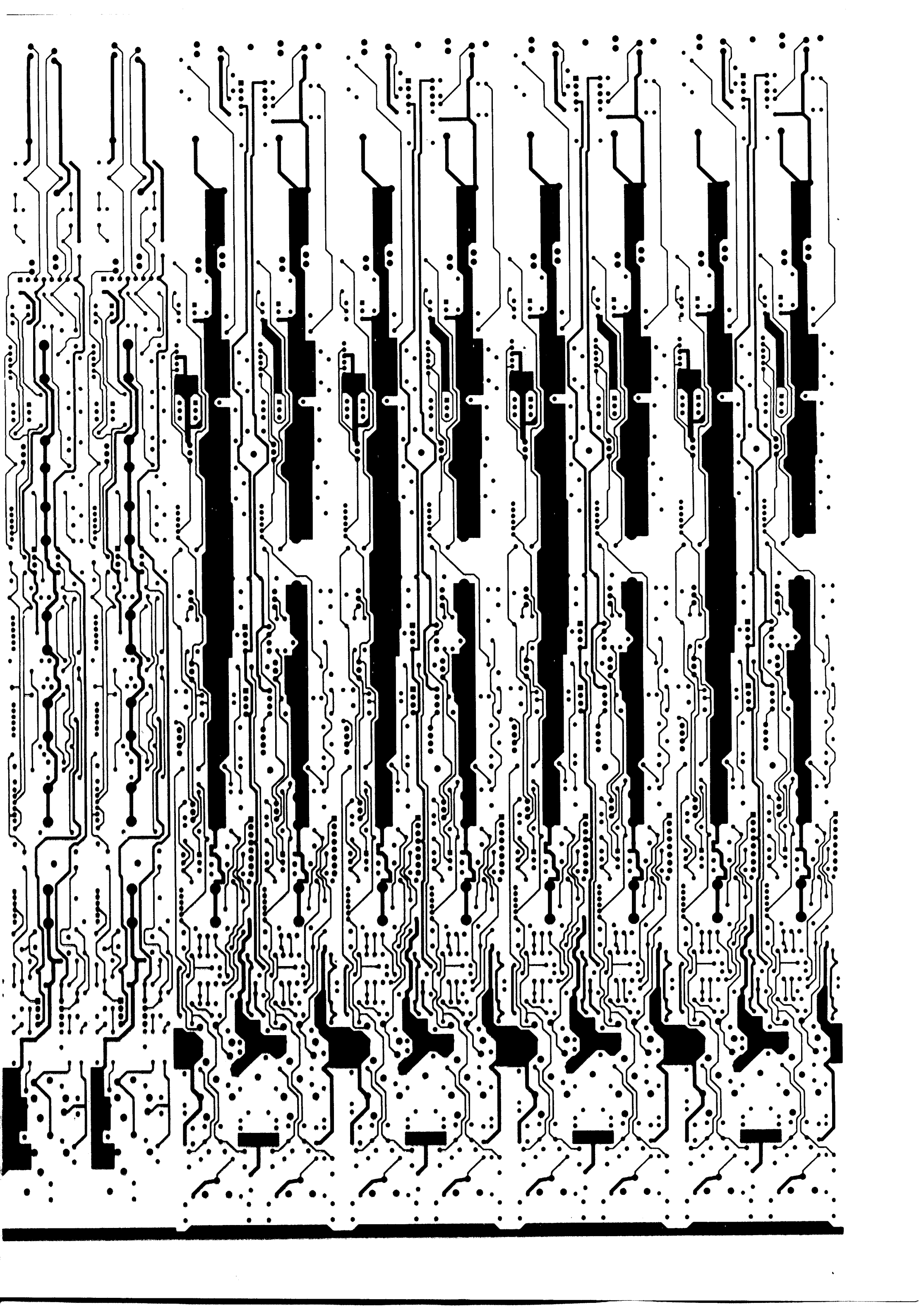
REV.	DATE	BY	CHKD.
1	10/1/88	J.M.	J.M.
2	10/1/88	J.M.	J.M.
3	10/1/88	J.M.	J.M.
4	10/1/88	J.M.	J.M.
5	10/1/88	J.M.	J.M.
6	10/1/88	J.M.	J.M.
7	10/1/88	J.M.	J.M.
8	10/1/88	J.M.	J.M.
9	10/1/88	J.M.	J.M.
10	10/1/88	J.M.	J.M.

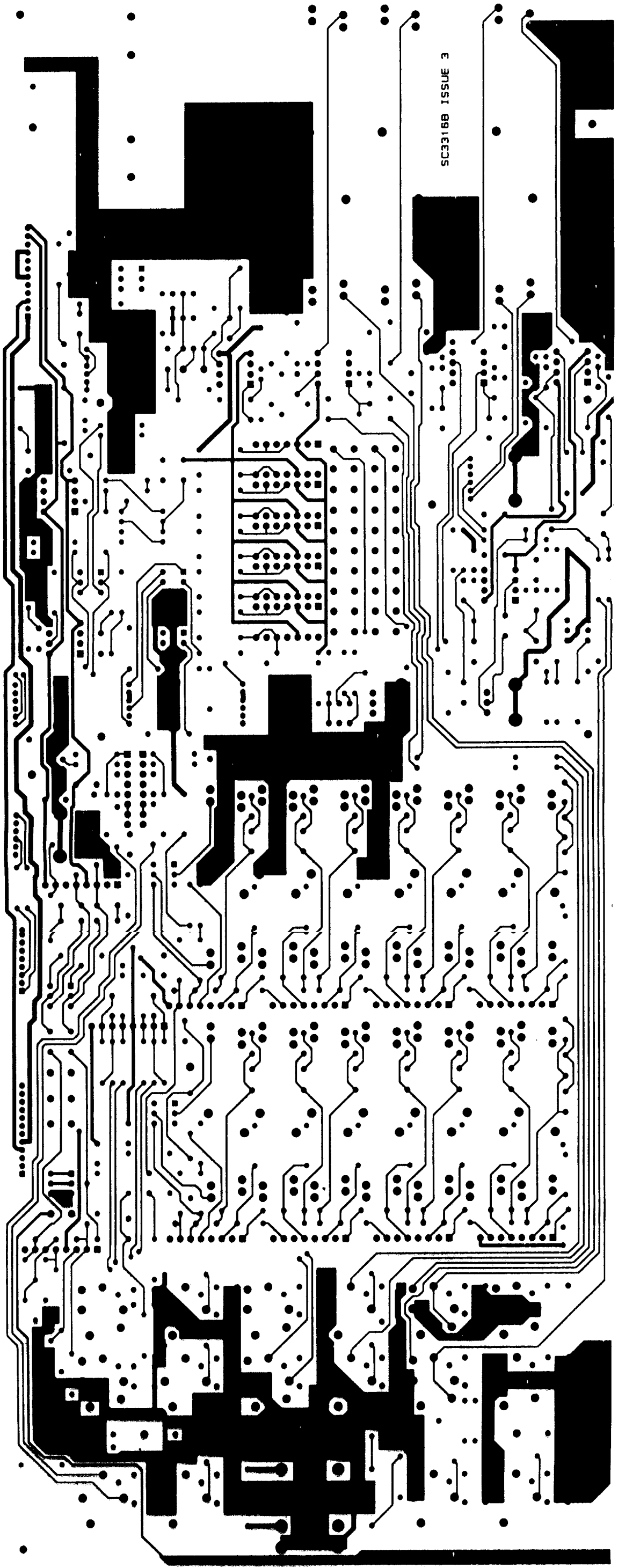
SC3316B ISSUE 3
POWER AMP MIXER MAIN BOARD
SOUNDCRAFT ELECTRONICS LTD.



SC3316A ISSUE 3
POWER AMP MIXER MAIN BOARD
SOUNDSCRAFT ELECTRONICS LTD







SC33168 ISSUE 3