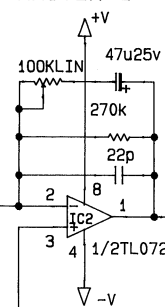
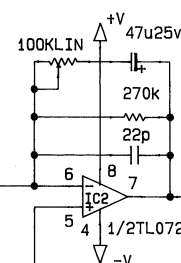


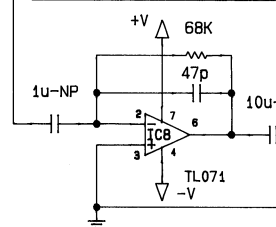
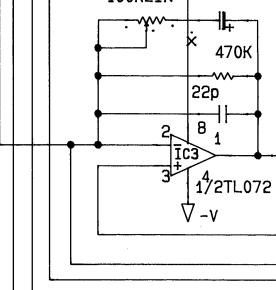
MASTER L



MASTER R

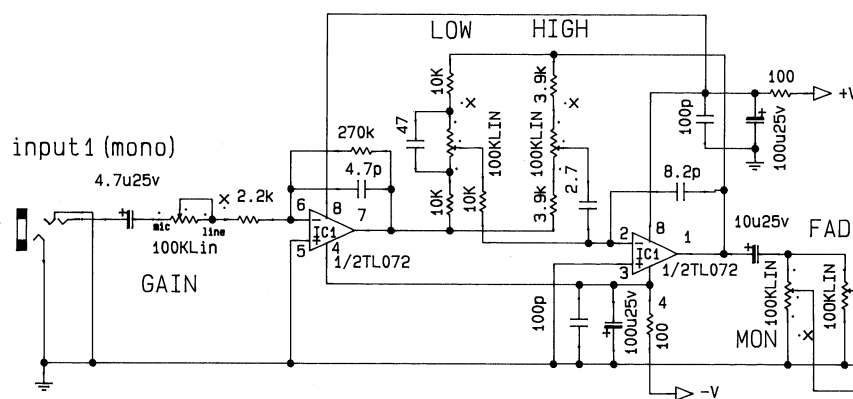


MONITOR



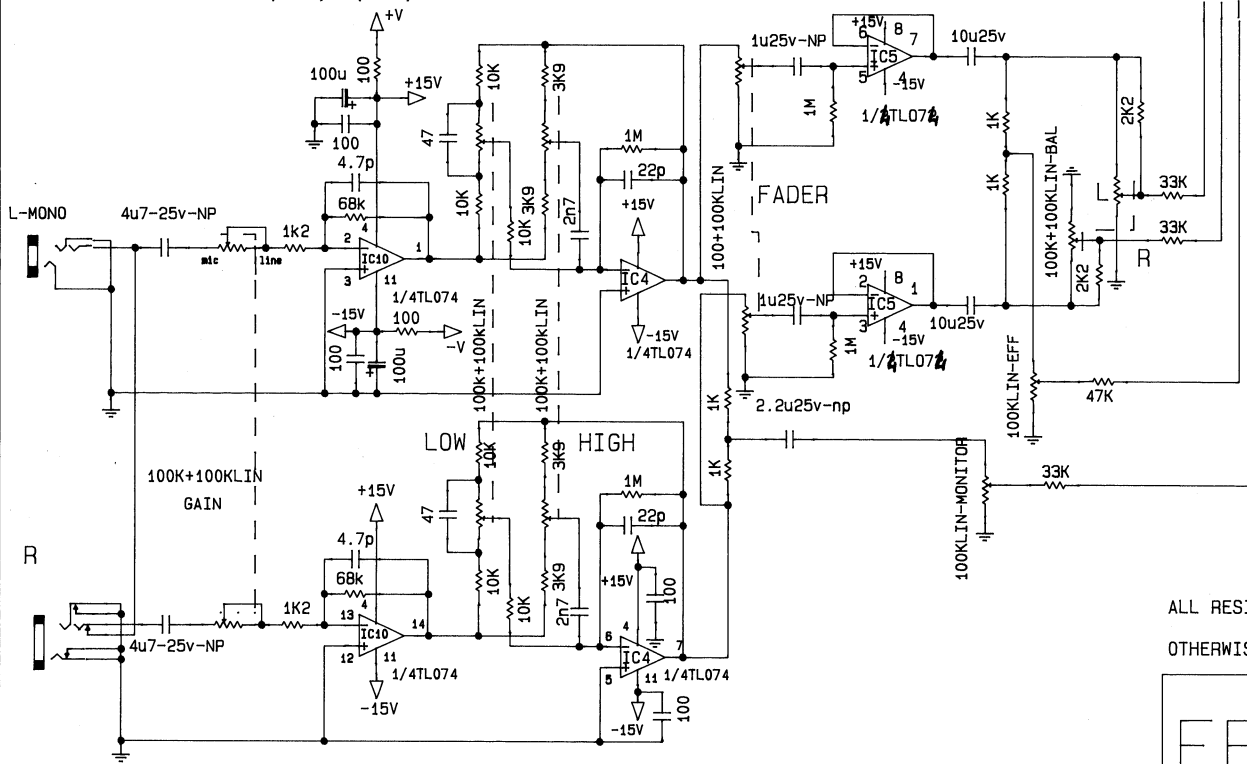
ALL RESISTANCE VALUES IN "ohm" AND CAPACITANCE VALUES IN "pF" UNLESS OTHERWISE SPECIFIED

FBT	MODEL EV	
	DESIGN.	CONTR.by



input2...4 (mono)

CHANNEL STEREO (5-6) = (7-8)



ALL RESISTANCE VALUES IN "ohm" AND CAPACITANCE VALUES IN "pF" UNLESS OTHERWISE SPECIFIED

