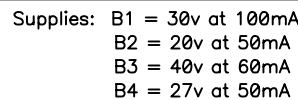


LC OUTPUTS



- NOTES: UNLESS OTHERWISE SPECIFIED

QSC AUDIO PRODUCTS, INC.
COSTA MESA, CALIFORNIA

SCHEMATIC DIAGRAM
MAIN PCB, PL 6.0

SH-000261-00

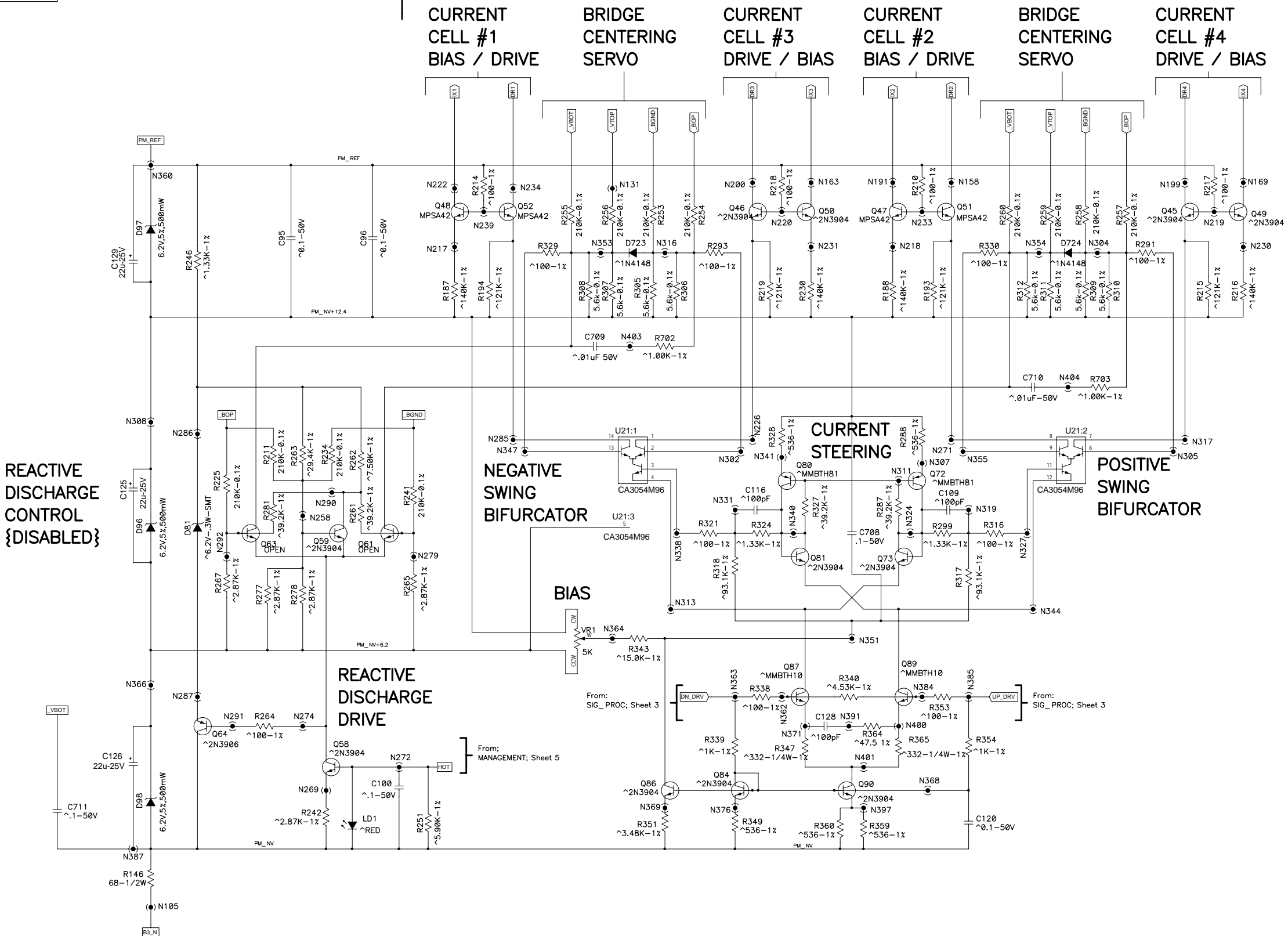
FILE NO. SH0261-A.sch	SHEET 1 OF 7
-----------------------	--------------

P:\60	1
-------	---

THIS DOCUMENT CONTAINS PROPRIETARY INFORMATION WHICH IS THE PROPERTY OF QSC AUDIO PRODUCTS. THAT MAY NOT BE DISCLOSED, REPRODUCED OR USED WITHOUT EXPRESS WRITTEN CONSENT FROM QSC AUDIO PRODUCTS.

PUPPETMSTR

To:
LC_OUTPUTS; Sheet 1



SIG_PROC



4uS DELAY / 50KHz LOWPASS /
DC SERVO SUMMING JUNCTION



LOSS_OF_FEEDBACK_DETECTOR

LEVEL_TRANSLATION

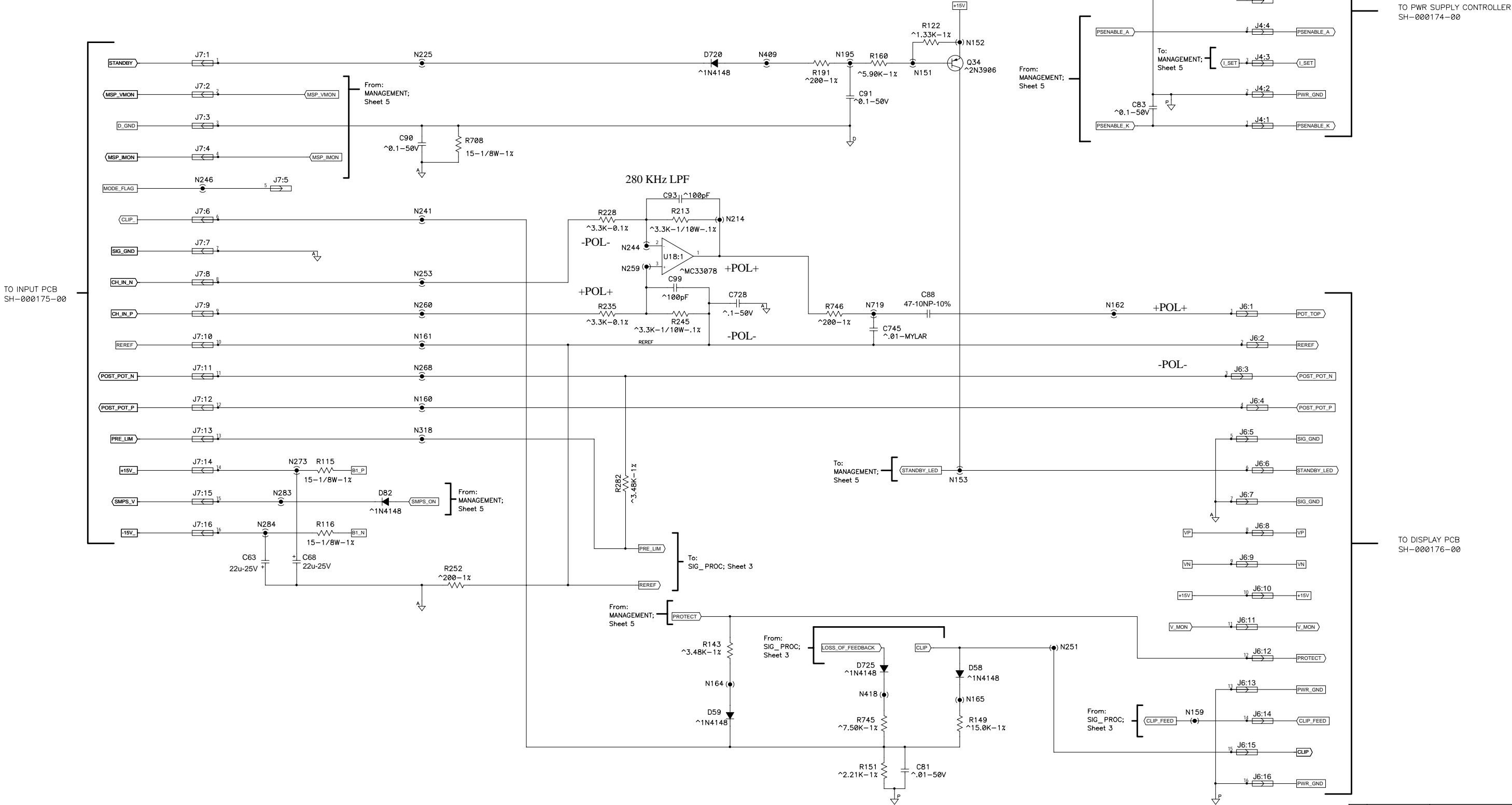


BUFFER

Limiter is shown in "fast clip-tracking" mode. To convert to a slow attack/release limiter, open the 3 places shown shorted with lines, and make the connection shown by the arrow line.

THIS DOCUMENT CONTAINS PROPRIETARY INFORMATION WHICH IS THE PROPERTY OF QSC AUDIO PRODUCTS, THAT MAY NOT BE DISCLOSED, REPRODUCED OR USED WITHOUT EXPRESS WRITTEN CONSENT FROM QSC AUDIO PRODUCTS.

ROUTING



THIS DOCUMENT CONTAINS PROPRIETARY INFORMATION WHICH IS THE PROPERTY OF QSC AUDIO PRODUCTS, THAT MAY NOT BE DISCLOSED, REPRODUCED OR USED WITHOUT EXPRESS WRITTEN CONSENT FROM QSC AUDIO PRODUCTS.

MANAGEMENT

AMPLIFIER ACTIVATION CIRCUIT

FAN CONTROL

OVERTEMP KILL /
REACTIVE DISCHARGE CONTROL

DIFF-AMP BIAS

MUTING

THERMAL

CURRENT CUTBACK

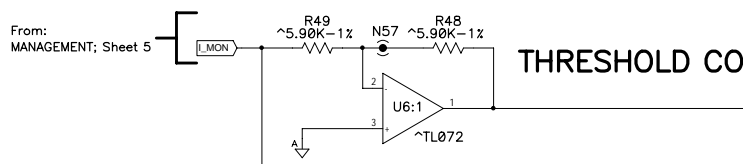
PROTECT DRIVE

DC_PROTECTION
via
POWER SUPPLY KILL

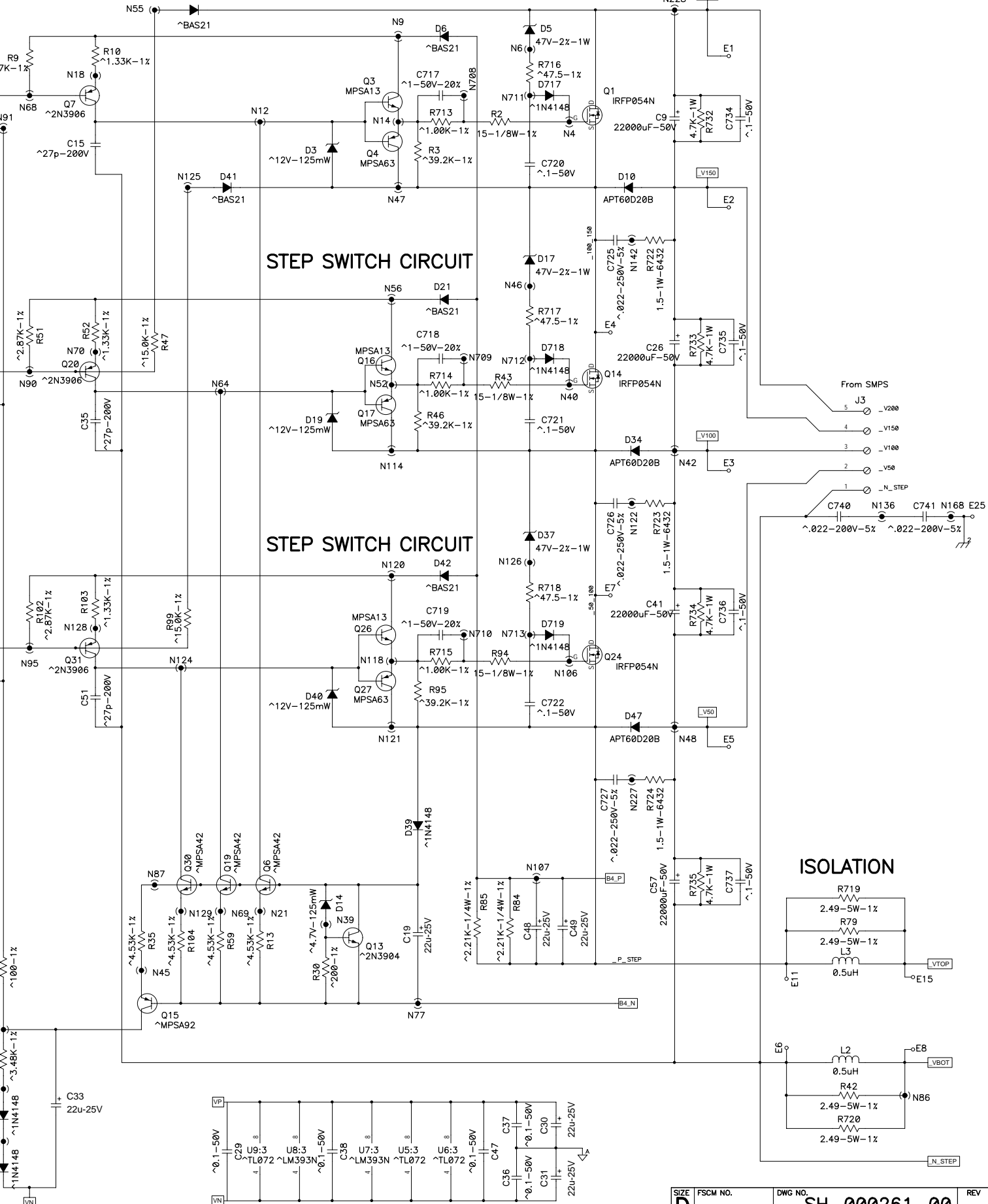
VOLTAGE_MONITORING

CURRENT_ MONITORING

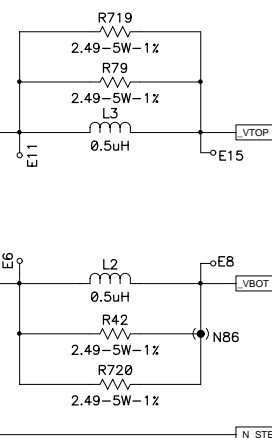
SNAPPER

STEP DRIVE
SELECTOR / RECTIFIER

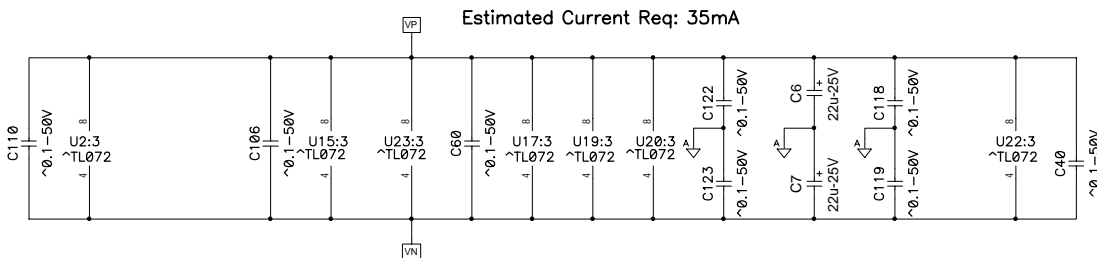
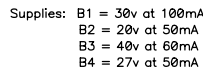
STEP SWITCH CIRCUIT



ISOLATION



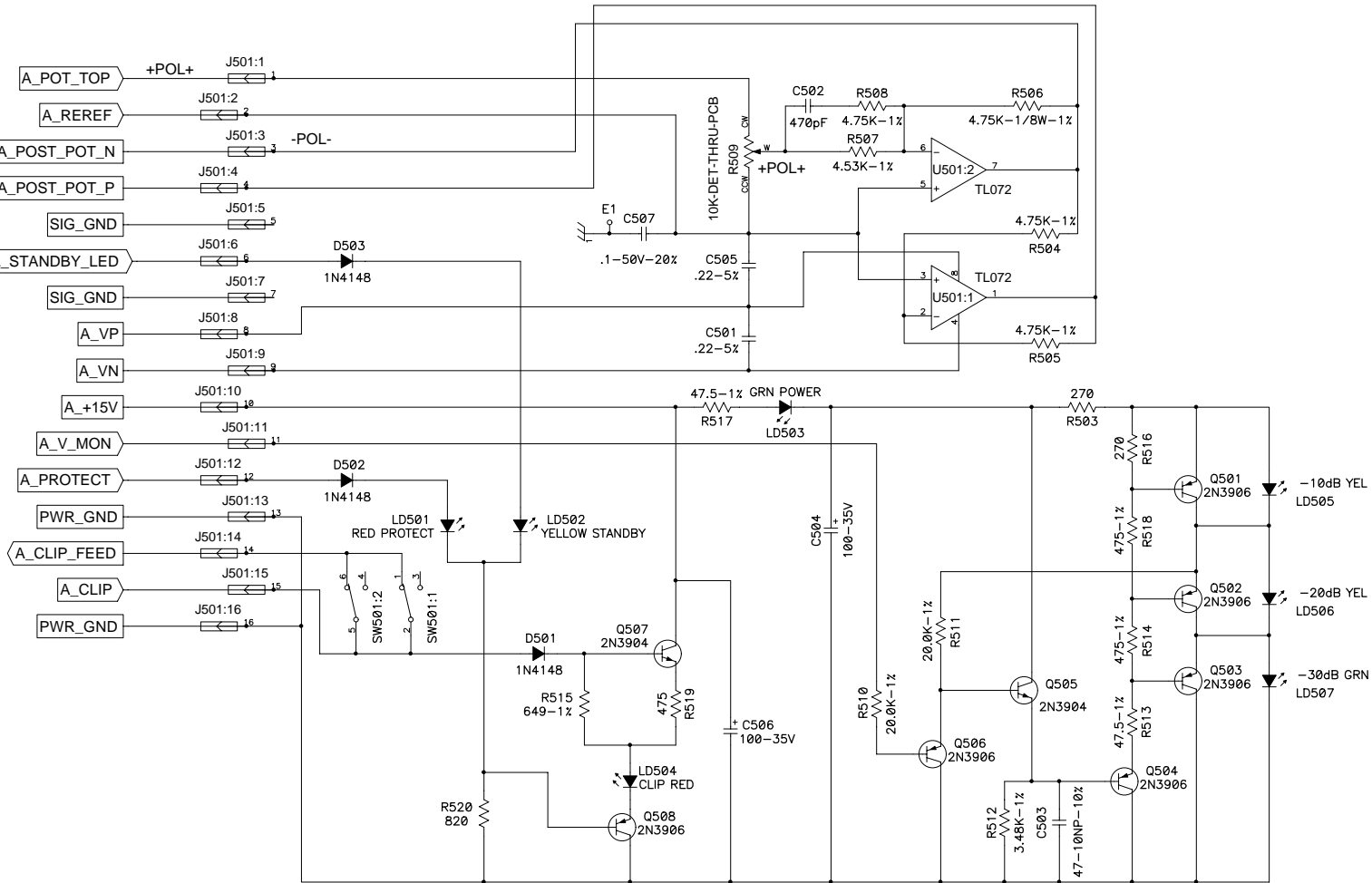
HK_SUPPLY



7	SH	SH-000261-00
---	----	--------------

THIS DOCUMENT CONTAINS PROPRIETARY INFORMATION WHICH IS THE PROPERTY OF QSC AUDIO PRODUCTS, THAT MAY NOT BE DISCLOSED, REPRODUCED OR USED WITHOUT EXPRESS WRITTEN CONSENT FROM QSC AUDIO PRODUCTS.

TO MAIN PCB
SH-000171-00
SHEET 4



4. CH 1 COMPONENTS NUMBERED 501-599.
CH2 COMPONENTS NUMBERED 601-699.
3. ALL CAPACITORS ARE IN MICROFARADS.
2. ALL RESISTORS ARE IN OHMS, 1/4W, 5%.
1. THIS DRAWING USED IN CONJUNCTION WITH ASSEMBLY WP-000176-00
AND FABRICATION DRAWING PC-000176-00.

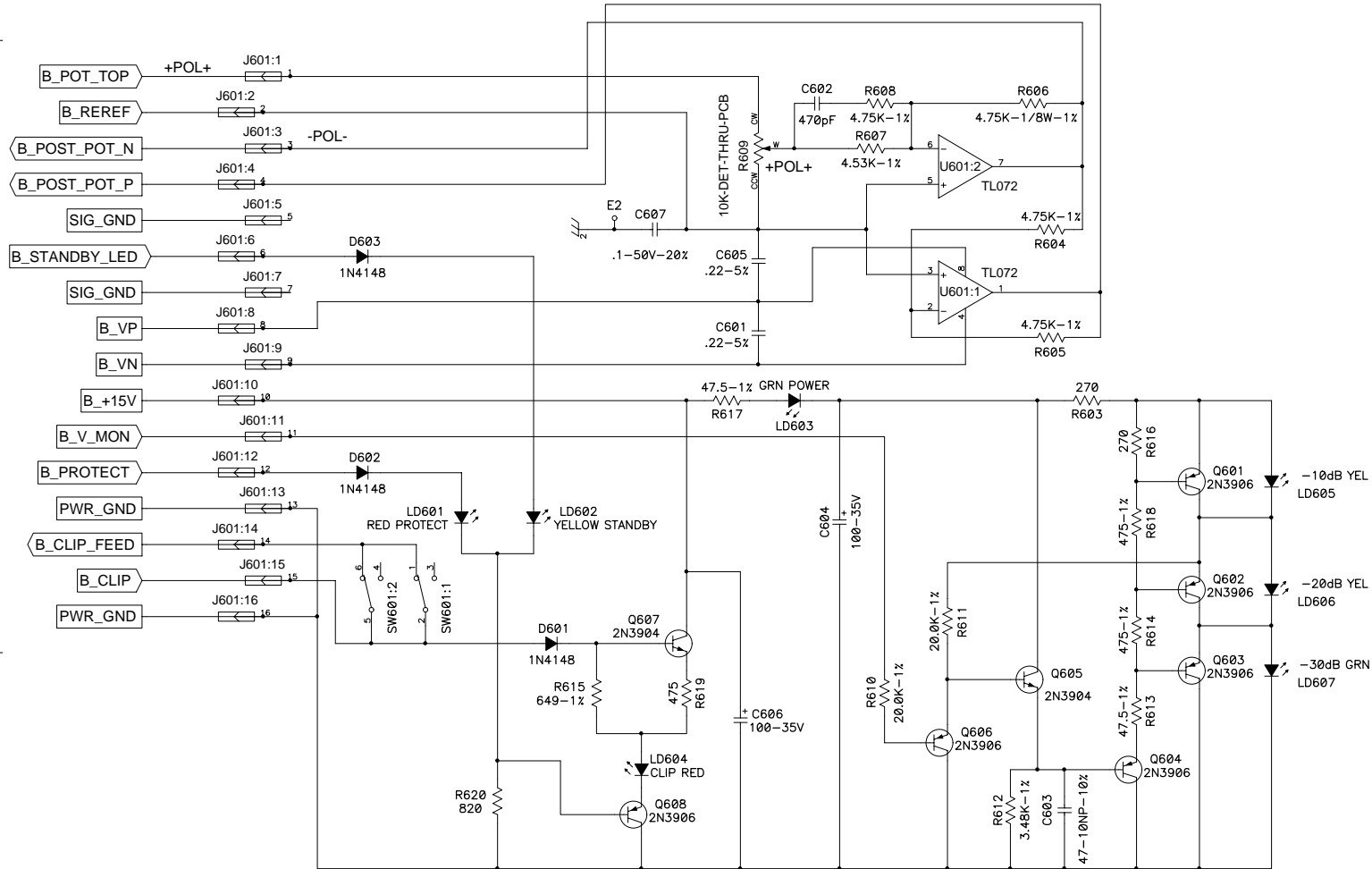
NOTES: UNLESS OTHERWISE SPECIFIED

QTY	ITEM NO.	PART NO.	DESCRIPTION	VENDOR
PARTS LIST				
UNLESS OTHERWISE SPECIFIED DIMENSIONS ARE IN INCHES. DIMENSIONS PER ANSI Y14.5-1982 TOLERANCES ARE: DECIMALS DECIMALS ANGLES .XX ± .XXX ± ° DEBURR EDGES .XXX R MAX MATERIAL			CONTRACT NO.	QSC AUDIO PRODUCTS, INC. COSTA MESA, CALIFORNIA
APPROVALS			DATE	SCHEMATIC DIAGRAM DISPLAY PCB, PL 9.0 & 6.0
DRAWN P. Ierymenko			11-30-95	
CHECKED RCM			5-13-98	
ISSUED TIM SHOOK			5-15-98	
CAD SEED FILE NO.			PLOT DATE: Thu May 04, 2000	SIZE FSCM NO. DWG NO. SH-000176-00 REV
APPLICATION			DO NOT SCALE DRAWING	SCALE NONE CAD FILE NO. Sh176-b.sch SHEET 1 OF 2

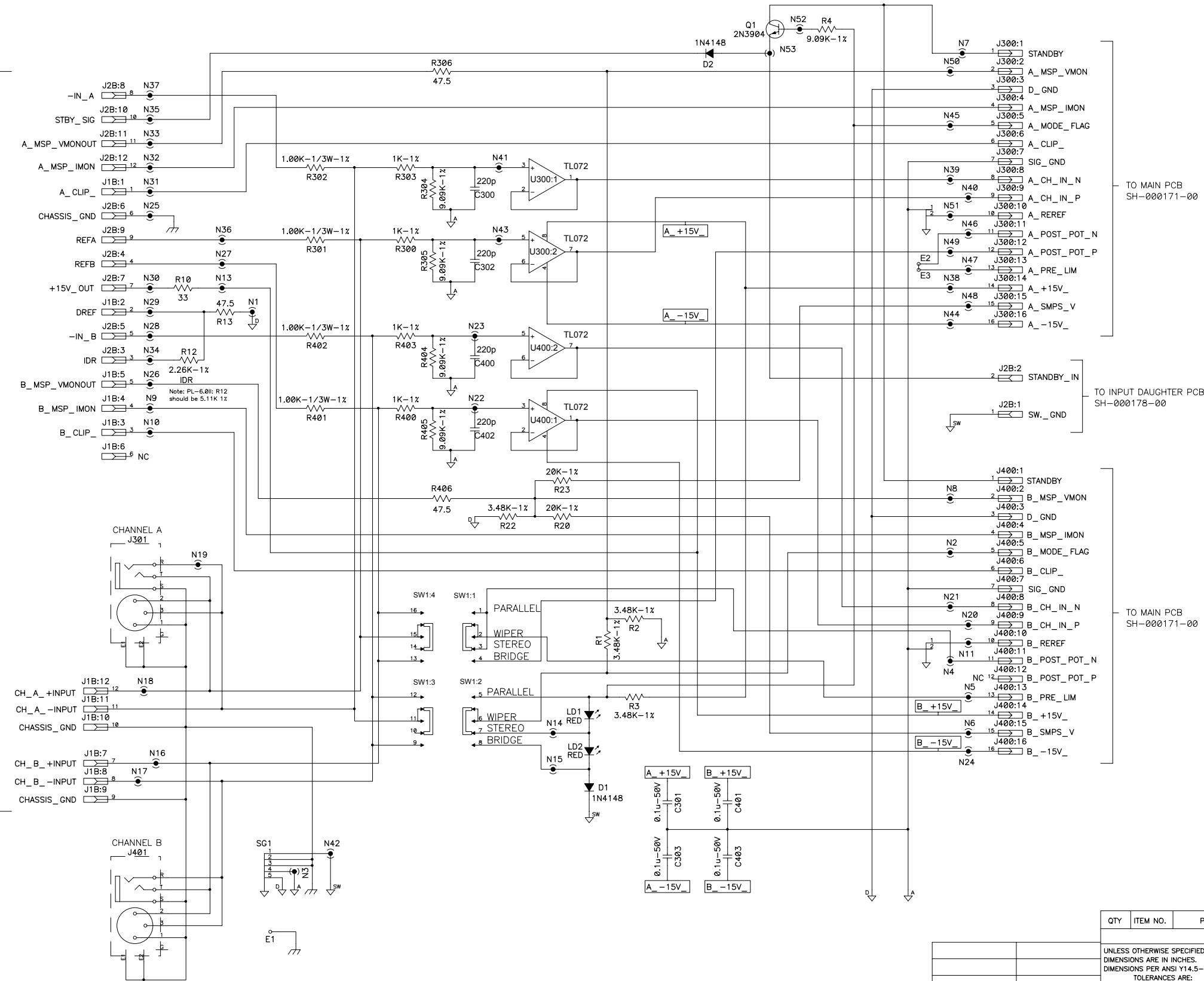
P:\MEGAMP\TANGO\DISPLAY

THIS DOCUMENT CONTAINS PROPRIETARY INFORMATION WHICH IS THE PROPERTY OF QSC AUDIO PRODUCTS, THAT MAY NOT BE DISCLOSED, REPRODUCED OR USED WITHOUT EXPRESS WRITTEN CONSENT FROM QSC AUDIO PRODUCTS.

TO MAIN PCB
SH-000171-00
SHEET 4



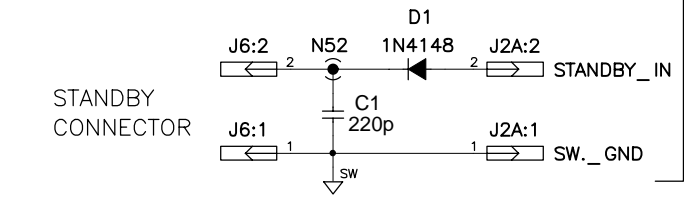
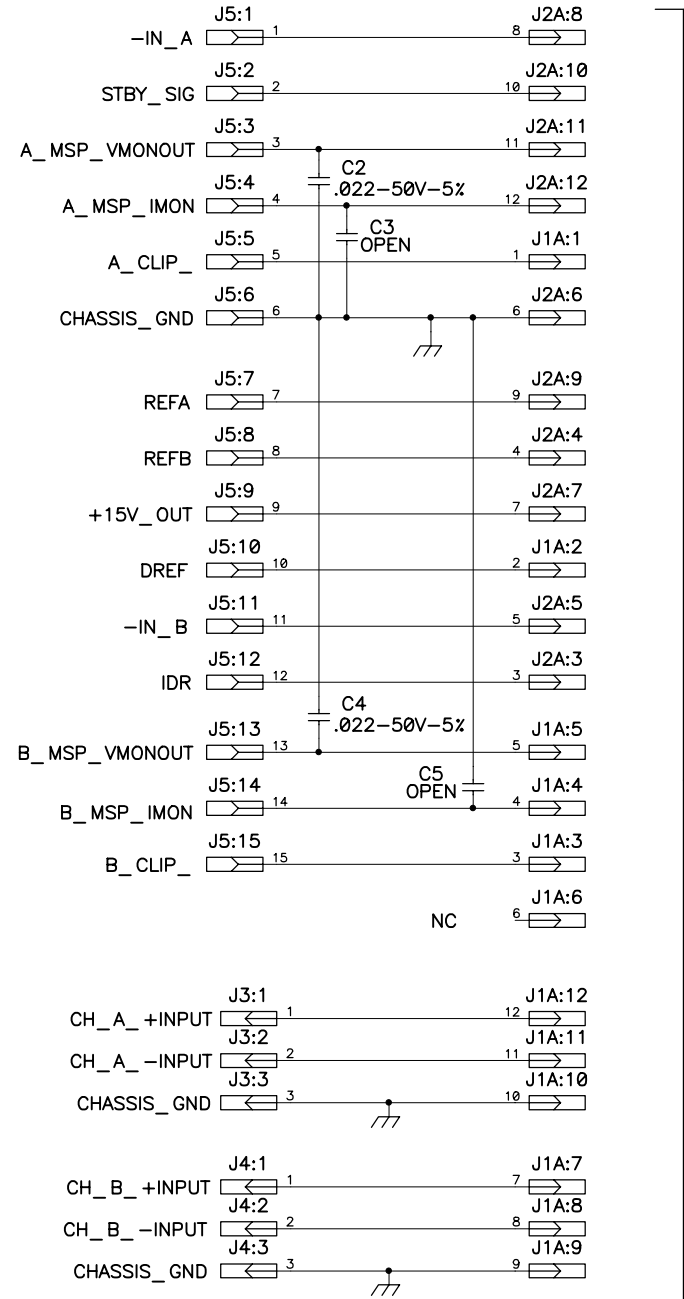
THIS DOCUMENT CONTAINS PROPRIETARY INFORMATION WHICH IS THE PROPERTY OF QSC AUDIO PRODUCTS, THAT MAY NOT BE DISCLOSED, REPRODUCED OR USED WITHOUT EXPRESS WRITTEN CONSENT FROM QSC AUDIO PRODUCTS.



1. THIS DRAWING USED IN CONJUNCTION WITH ASSEMBLY WP-000265-00 AND FABRICATION DRAWING PC-000175-00.

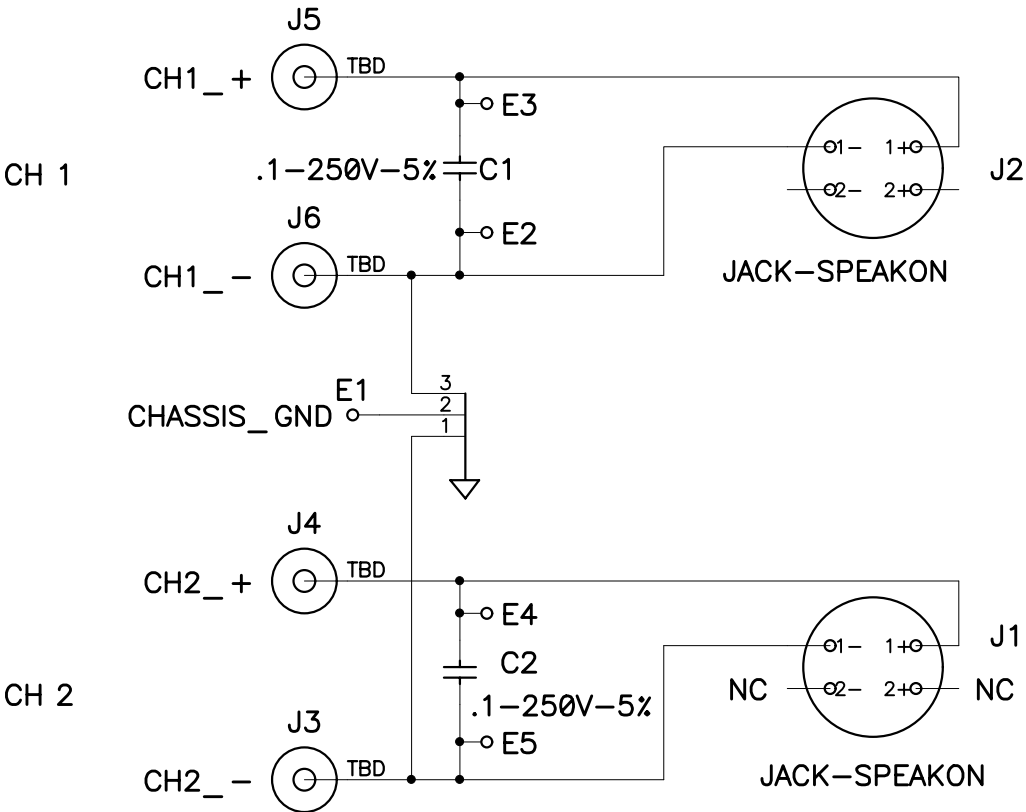
NOTES: UNLESS OTHERWISE SPECIFIED

THIS DOCUMENT CONTAINS PROPRIETARY INFORMATION WHICH IS THE PROPERTY OF QSC AUDIO PRODUCTS, THAT MAY NOT BE DISCLOSED, REPRODUCED OR USED WITHOUT EXPRESS WRITTEN CONSENT FROM QSC AUDIO PRODUCTS.



QTY		ITEM NO.	PART NO.		DESCRIPTION			VENDOR		
PARTS LIST										
		UNLESS OTHERWISE SPECIFIED DIMENSIONS ARE IN INCHES. DIMENSIONS PER ANSI Y14.5-1982 TOLERANCES ARE: DECIMALS DECIMALS ANGLES .XX ± .XXX ± 0 DEBURR EDGES .XXX R MAX MATERIAL FINISH		CONTRACT NO.		<div>QSC</div> AUDIO PRODUCTS, INC. COSTA MESA, CALIFORNIA				
				APPROVALS	DATE					
				DRAWN A. CERRILLO	3-18-96					
				CHECKED		SCHEMATIC DIAGRAM INPUT DAUGHTER PCB, PL9.0				
WP-000178-00	PL 9.0			ISSUED						
NEXT ASSY	USED ON			SIZE C					FSCM NO.	DWG NO. SH-000178-00
APPLICATION		DO NOT SCALE DRAWING		CAD SEED FILE NO. SH0178-1.SCH	Thu May 04, 2000	SCALE	CAD FILE NO. sh178-a3.sch	SHEET 1 OF 1		

THIS DOCUMENT CONTAINS PROPRIETARY INFORMATION WHICH IS THE PROPERTY OF QSC AUDIO PRODUCTS, THAT MAY NOT BE DISCLOSED, REPRODUCED OR USED WITHOUT EXPRESS WRITTEN CONSENT FROM QSC AUDIO PRODUCTS.



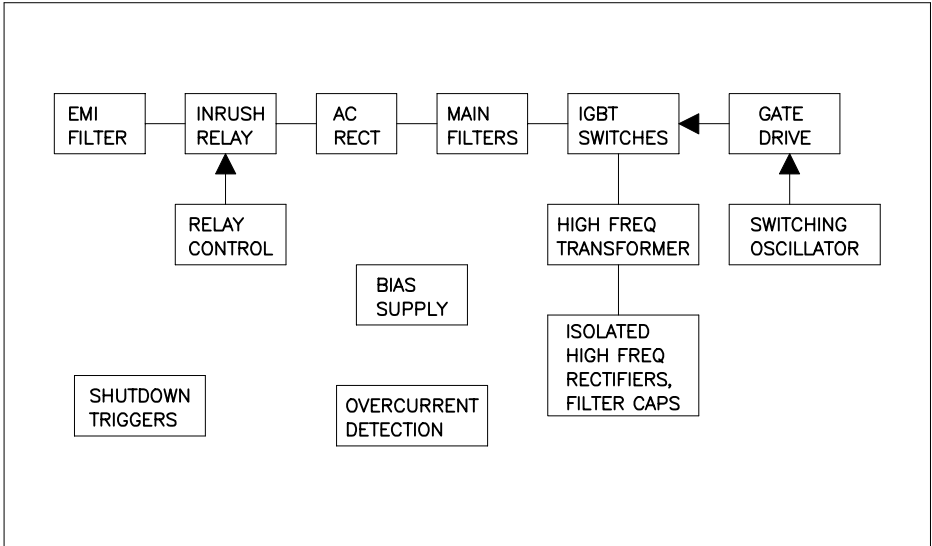
1. THIS DRAWING USED IN CONJUNCTION WITH ASSEMBLY WP-000179-00 AND FABRICATION DRAWING PC-000179-00.

NOTES: UNLESS OTHERWISE SPECIFIED

		QTY	ITEM NO.	PART NO.	DESCRIPTION	VENDOR
PARTS LIST						
		UNLESS OTHERWISE SPECIFIED DIMENSIONS ARE IN INCHES. DIMENSIONS PER ANSI Y14.5-1982 TOLERANCES ARE: DECIMALS DECIMALS ANGLES .XX ± .XXX ± 0 DEBURR EDGES .XXX R MAX MATERIAL			CONTRACT NO.	<div>QSC</div> <div>AUDIO PRODUCTS, INC.</div> <div>COSTA MESA, CALIFORNIA</div> <div>SCHEMATIC DIAGRAM</div> <div>OUTPUT PCB</div>
					APPROVALS	
					DATE	
					DRAWN A. CERRILLO	
					CHECKED	
WP-000179-00	PL 9.0	FINISH			ISSUED	SIZE B
NEXT ASSY	USED ON				CAD SEED FILE NO.	FSCM NO.
APPLICATION		DO NOT SCALE DRAWING			PLOT DATE: Thu May 04, 2000	DWG NO. SH-000179-00
					SCALE NONE	REV
					CAD FILE NO. sh0179-A.sch	SHEET 1 OF 1

THIS DOCUMENT CONTAINS PROPRIETARY INFORMATION WHICH IS THE PROPERTY OF QSC AUDIO PRODUCTS, THAT MAY NOT BE DISCLOSED, REPRODUCED OR USED WITHOUT EXPRESS WRITTEN CONSENT FROM QSC AUDIO PRODUCTS.

REVISION				
REV	DESCRIPTION	EFF. DATE	CHK	APPROVED / DATE
A	PROD RELEASE PER ECO 4249 WR	3-24-00		DD 4-12-00
B	REVISED PER ECO 4295 AA	5-5-00		



SWITCHING
POWER
SUPPLY

SHEET 2

TABULATION BLOCK			
DASH NO.	F1	1	R321, 322, 326, 328 2
-00 (120V)	25A, 125V		487K
-01 (100V)	30A, 125V		392K
-02 (230V)	15A, 250V		487K

QTY	ITEM NO.	PART NO.	DESCRIPTION	VENDOR
PARTS LIST				
UNLESS OTHERWISE SPECIFIED DIMENSIONS ARE IN INCHES. DIMENSIONS PER ANSI Y14.5-1982 TOLERANCES ARE: DECIMALS DECIMALS ANGLES .XX ± .XXX ± ° DEBURR EDGES .XXX R MAX MATERIAL FINISH			CONTRACT NO.	
NEXT ASSY			USED ON	APPLICATION
DO NOT SCALE DRAWING			DO NOT SCALE DRAWING	
PLOT DATE: Thu Apr 03, 2003			C:\DATA\EVICTOR\1ST LAYOUT\EVICTOR1.0	

QSC

AUDIO PRODUCTS, INC.

COSTA MESA, CALIFORNIA

SCHEMATIC DIAGRAM

EVICTOR

SIZE D

FSCM NO.

DWG NO. SH-000266-00

REV 2.4

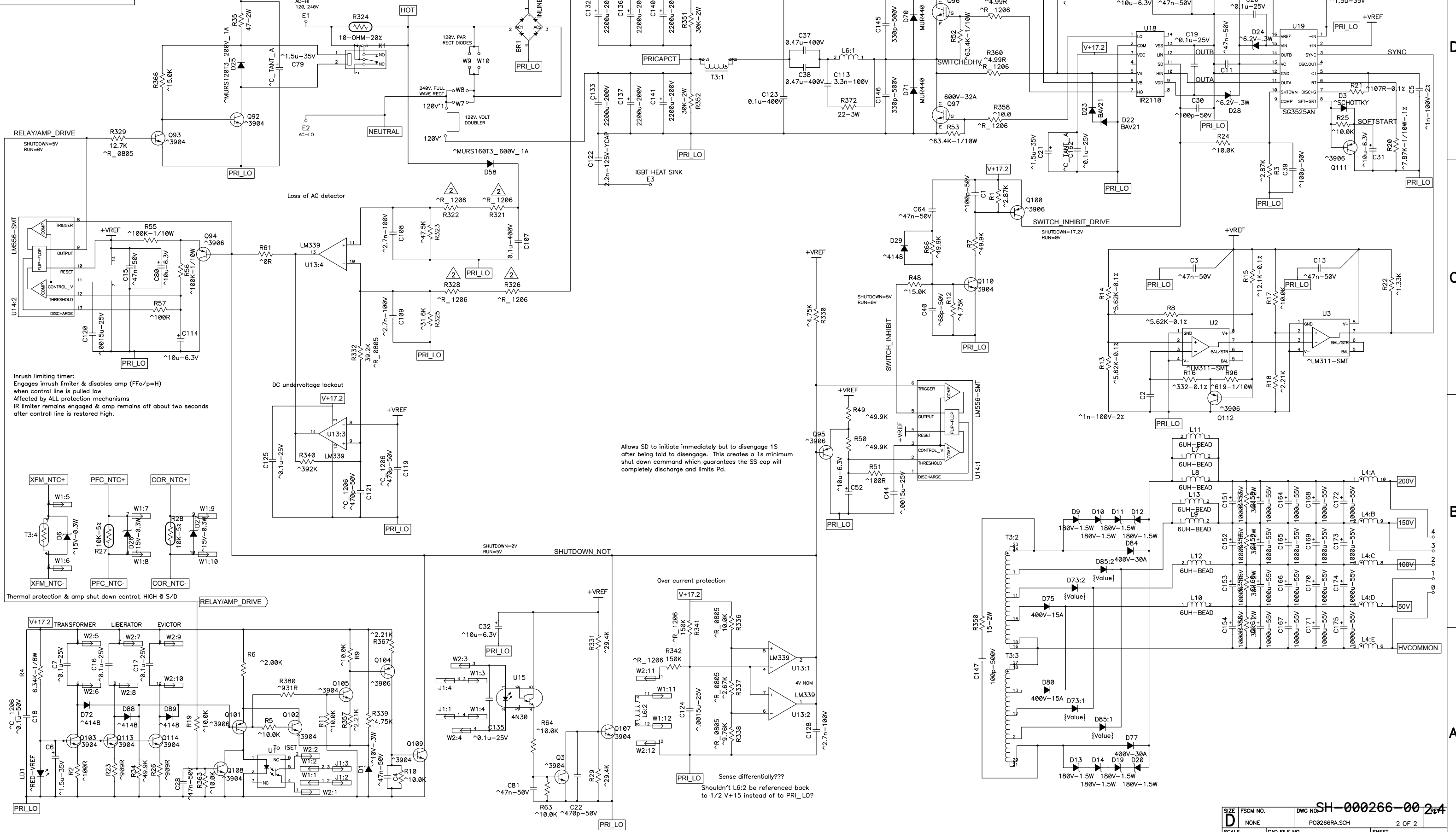
SCALE NONE

CAD FILE NO. PC8266RA.SCH

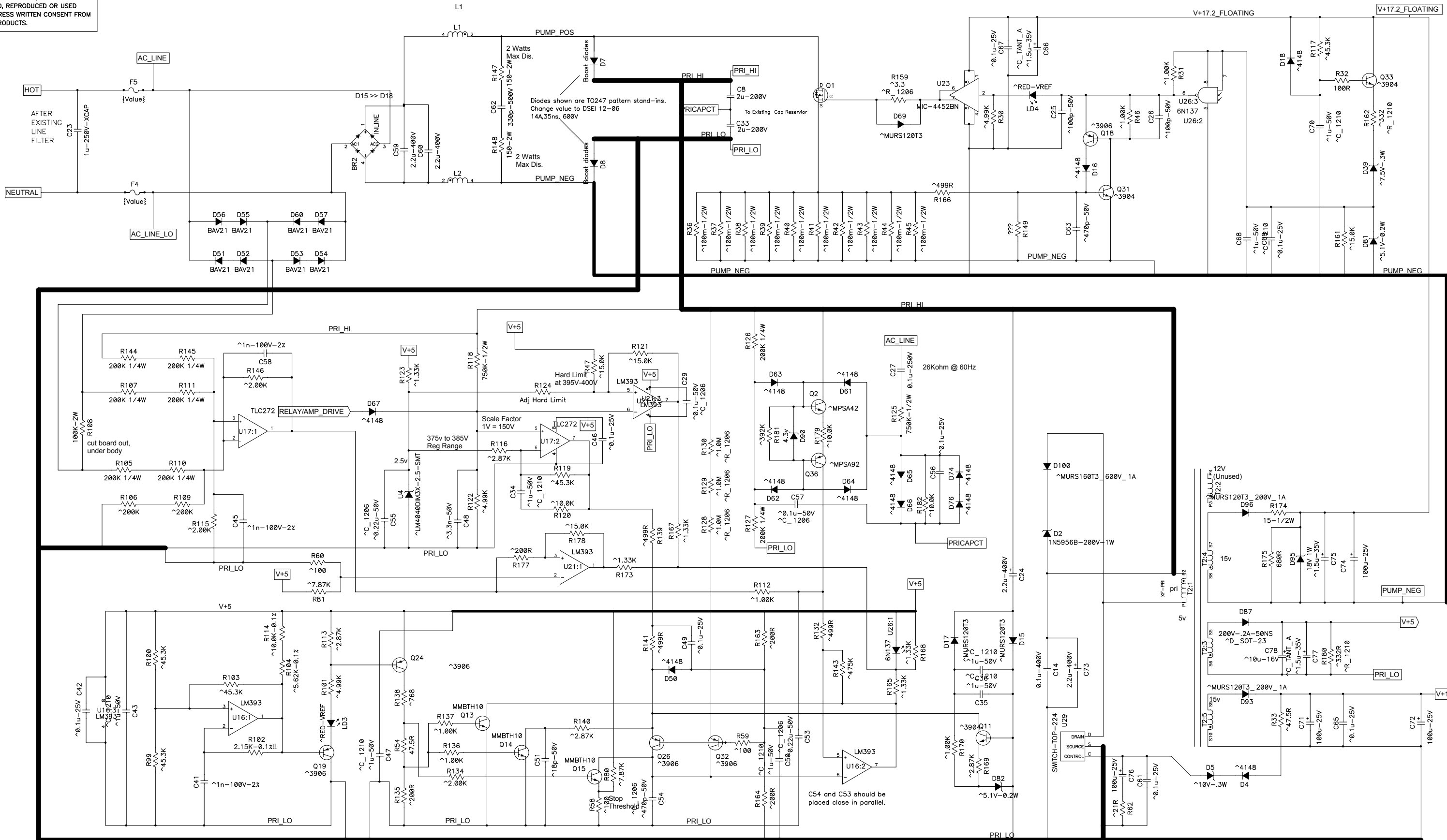
SHEET 1 OF 4

2. COMPONENTS WITH VALUE PREFIXED WITH A "*" REPRESENT SMT COMPONENTS.
1. THIS DRAWING USED IN CONJUNCTION WITH ASSEMBLY WP-003606-XX.
NOTES: UNLESS OTHERWISE SPECIFIED

THIS DOCUMENT CONTAINS PROPRIETARY INFORMATION WHICH IS THE PROPERTY OF QSC AUDIO PRODUCTS. THAT MAY NOT BE DISCLOSED, REPRODUCED OR USED WITHOUT EXPRESS WRITTEN CONSENT FROM QSC AUDIO PRODUCTS.



THIS DOCUMENT CONTAINS PROPRIETARY INFORMATION WHICH IS THE PROPERTY OF QSC AUDIO PRODUCTS, THAT MAY NOT BE DISCLOSED, REPRODUCED OR USED WITHOUT EXPRESS WRITTEN CONSENT FROM QSC AUDIO PRODUCTS.



FULL AC LINE VOLTAGE EVERYWHERE.
NO EARTH REFERENCE, USE CAUTION WHEN MEASURING!