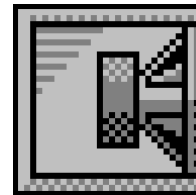


Custom Vented Box Design

By NeXuS3, Nexo



Box Properties

--Description--

Name:

Type: Vented Box

Shape: Prism, square

--Box Parameters--

Vb = 164.5 liters

Fb = 46.69 Hz

QL = 6.787

F3 = 42.27 Hz

Fill = minimal

--Vents--

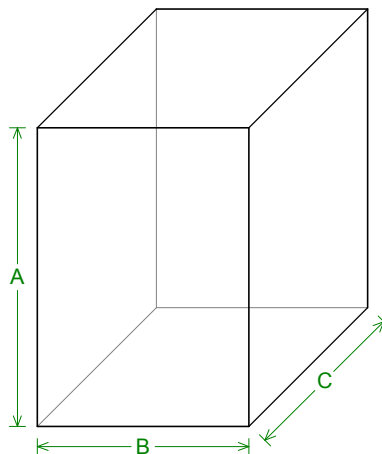
No. of Vents = 1

Vent shape = round

Vent ends = one flush

Dv = 200 mm

Lv = 90 mm



--External Dimensions--

A = 737 mm

B = 522 mm

C = 553 mm

--Internal Dimensions--

A = 701 mm

B = 486 mm

C = 487 mm

--Wall Thickness--

Front = 48 mm

Side = 18 mm

Driver Properties

--Description--

Name:

Type: Standard one-way driver

--Configuration--

No. of Drivers = 1

--Driver Parameters--

Fs = 32 Hz

Qms = 6.5

Vas = 257 liters

Xmax = 8.8 mm

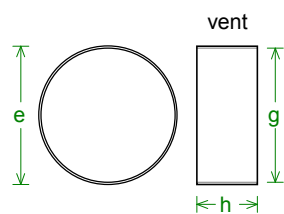
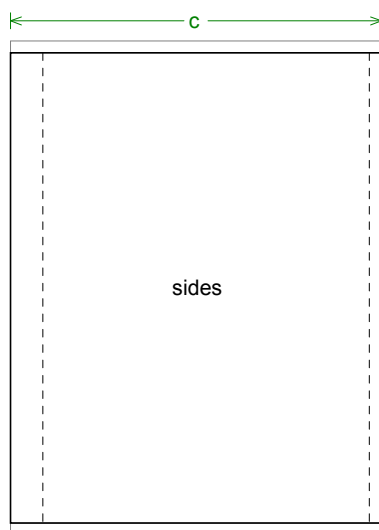
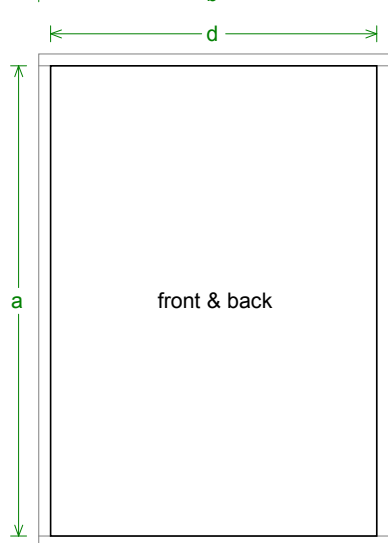
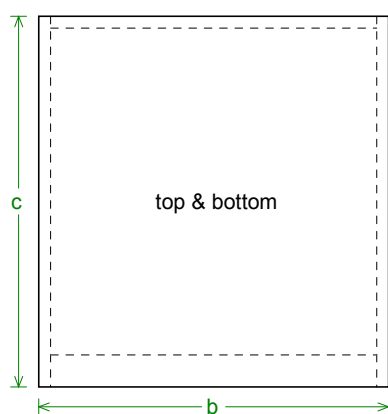
Sd = 0.122 sq.cm

Qes = 0.27

Re = 5.1 ohms

Z = 8 ohms

Pe = 1200 watts



Box Parts

--Square Prism Box Parts--

- 1 Top, 1 Bottom: depth (c) = 553 mm
width (b) = 522, thickness = 18 mm
- 1 Front: height (a) = 701 mm
width (d) = 486, thickness = 48 mm
- 1 Back: height (a) = 701 mm
width (d) = 486, thickness = 18 mm
- 2 Sides: height (a) = 701 mm
depth (c) = 553, thickness = 18 mm

--Vent Parts--

- 1 Duct: outside diameter (e) = 206.4 mm
inside diameter (g) = 200 mm
length (h) = 90 mm

--Driver Mounting-- Mounting:



Wiring Diagram

