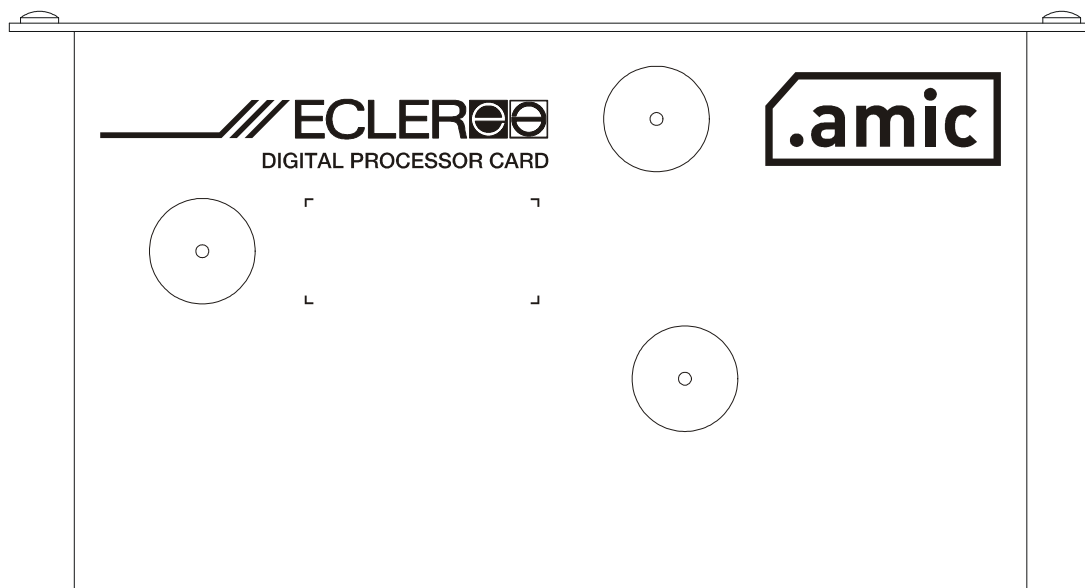
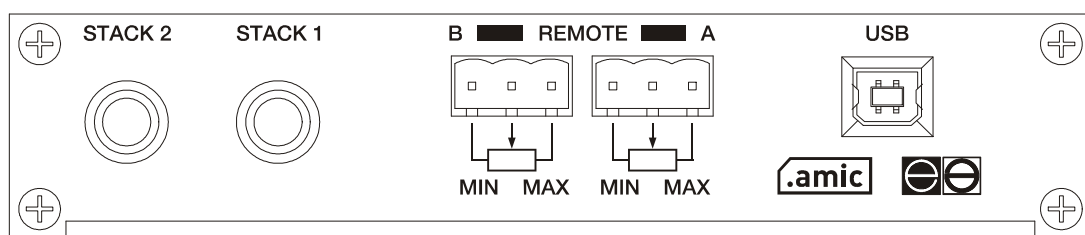


# AMIC

## SERVICE MANUAL



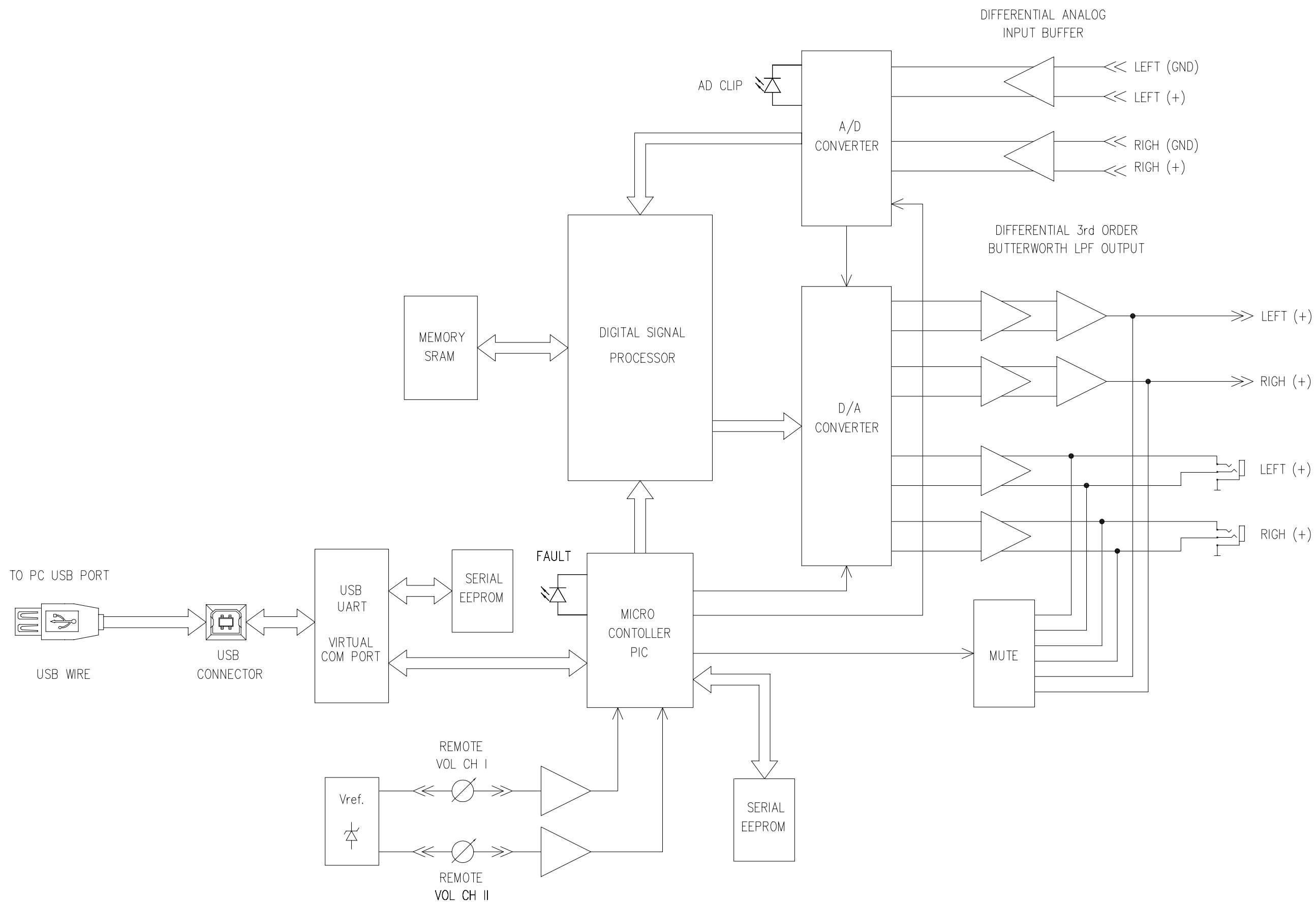
# ECLER

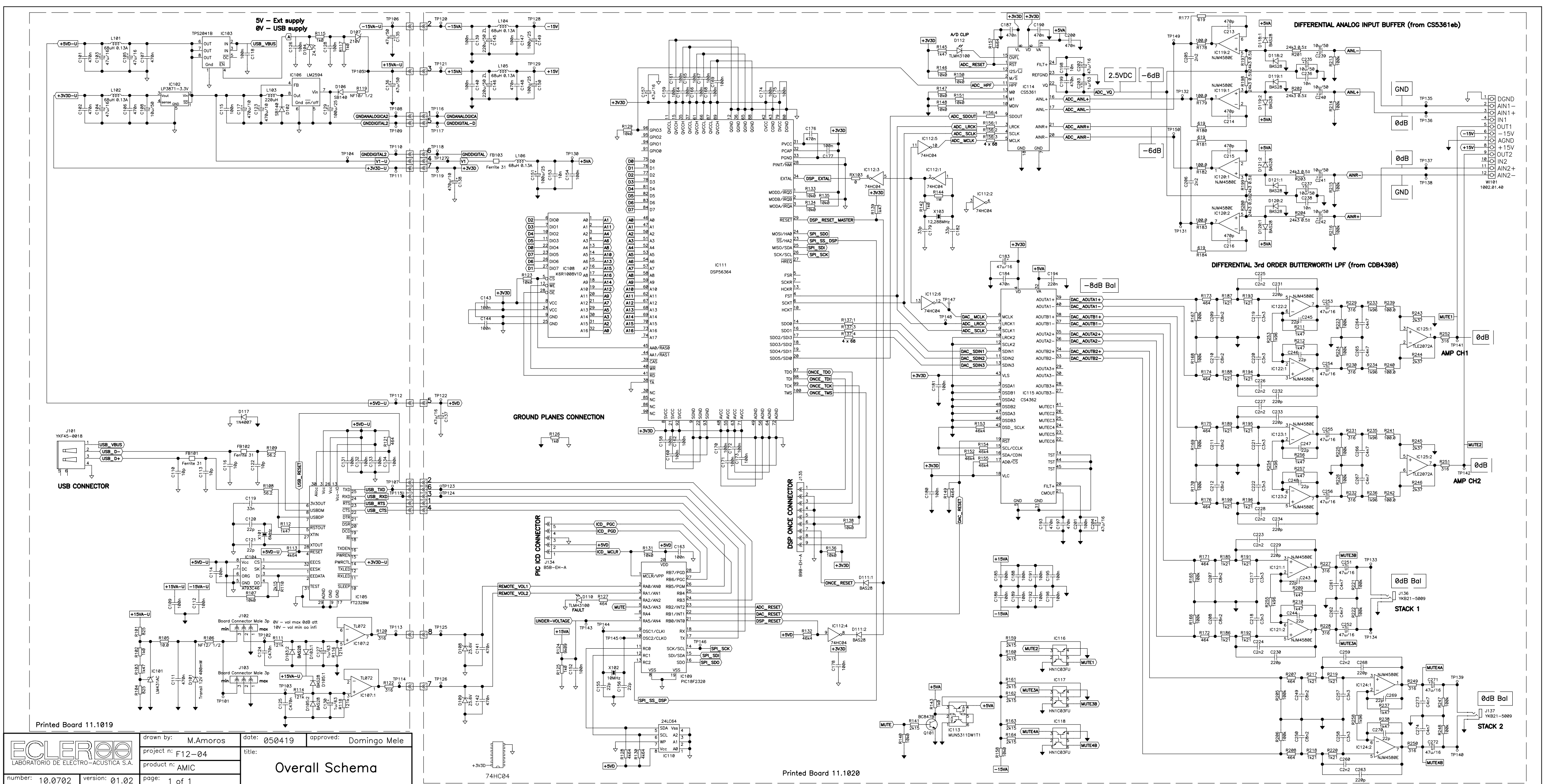
AUDIO CREATIVE POWER

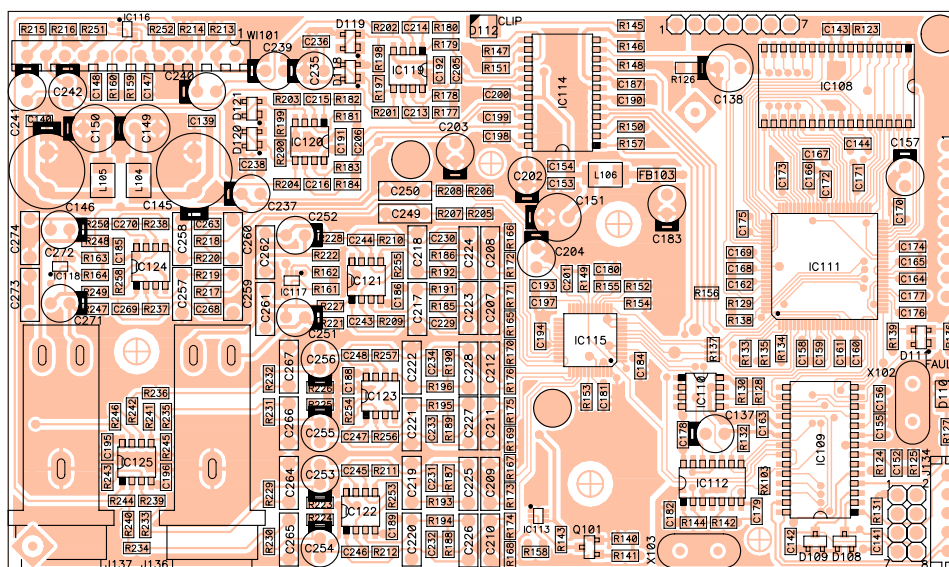
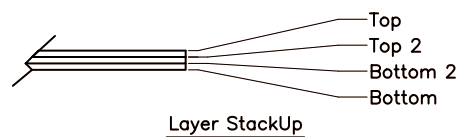
# SERVICE MANUAL AMIC

## INDEX

- BLOCK DIAGRAM
- SCHEMATICS
- COMPONENTS LOCATION SCHEMA
- TECHNICAL CHARACTERISTICS
- WIRING & CONFIGURATION DIAGRAM
- MECHANICAL DIAGRAM
- PACKING DIAGRAM







<b>ECLEREE</b> LABORATORIO DE ELECTRO-ACUSTICA S.A.		related to: circuit no: 11.1019-03.00 schema no: 10.0702-01.02 insertion file no: 81.0098-01.02		side: Component
		project n: F12-04	title:	view: Reference
number: 33.0930	version: 01.01	product n: AMIC	Base Ct.	
drawn by: M. Amoros	date: 050420	approved: Domingó Mele		



<div>ECLER</div> <div>LABORATORIO DE ELECTRO-ACUSTICA S.A.</div>		related to:		circuit no: 11.1019-03.00		side: Component			
				schema no: 10.0702-01.02		view: Value			
		insertion file no: 81.0098-01.02							
project n: AMIC		title:  Base Ct.							
number: 33.0931	version: 01.01							product n: F12-04	
drawn by: M. Amoros	date: 050420							approved: Domingo Mele	

**PARTS LIST: PRINTED CIRCUIT 11.1019.03.00**

Code	Description	Reference
FCCE10000000	47u/16	C137
FCCE03000000	470u/10	C138
FCXCD4100000	100n	C139
FCXCD4100000	100n	C140
FCXCD4470000	470n	C141
FCXCD4470000	470n	C142
FCXCD4100000	100n	C143
FCXCD4100000	100n	C144
FCCE25220100	220u/50 ZL	C145
FCCE25220100	220u/50 ZL	C146
FCXCD4100000	100n	C147
FCXCD4470000	470n	C148
FCCE15100000	100u/25	C149
FCCE15100000	100u/25	C150
FCCE15100000	100u/25	C151
FCXCD4100000	100n	C152
FCXCD4010000	10n	C153
FCXCD4100000	100n	C154
FCXCD1220000	22p	C155
FCXCD1220000	22p	C156
FCCE10000000	47u/16	C157
FCXCD4100000	100n	C158
FCXCD4100000	100n	C159
FCXCD4100000	100n	C160
FCXCD4100000	100n	C161
FCXCD4100000	100n	C162
FCXCD4100000	100n	C163
FCXCD4100000	100n	C164
FCXCD4100000	100n	C165
FCXCD4100000	100n	C166
FCXCD4100000	100n	C167
FCXCD4100000	100n	C168
FCXCD4100000	100n	C169
FCXCD4100000	100n	C170
FCXCD4100000	100n	C171
FCXCD4100000	100n	C172
FCXCD4100000	100n	C173
FCXCD4100000	100n	C174
FCXCD4100000	100n	C175
FCXCD4470000	470n	C176
FCXCD4100000	100n	C177
FCXCD4100000	100n	C178
FCXCD1330000	33p	C179
FCXCD4100000	100n	C180
FCXCD4100000	100n	C181
FCXCD1330000	33p	C182
FCCE10000000	47u/16	C183
FCXCD4470000	470n	C184
FCXCD4100000	100n	C185
FCXCD4100000	100n	C186
FCXCD4470000	470n	C187
FCXCD4100000	100n	C188
FCXCD4100000	100n	C189
FCXCD4470000	470n	C190
FCXCD4100000	100n	C191
FCXCD4100000	100n	C192

**PARTS LIST: PRINTED CIRCUIT 11.1019.03.00**

<b>Code</b>	<b>Description</b>	<b>Reference</b>
FCXCD4470000	470n	C193
FCXCD4220000	220n	C194
FCXCD4100000	100n	C195
FCXCD4100000	100n	C196
FCXCD4470000	470n	C197
FCXCD4010000	10n	C198
FCXCD4470000	470n	C199
FCXCD4470000	470n	C200
FCXCD4100000	100n	C201
FCCE10000000	47u/16	C202
FCCE30001000	1u/63	C203
FCCE10000000	47u/16	C204
FCXCD4002200	2n2	C205
FCXCD4002200	2n2	C206
FCCDK1008200	C8n2	C207
FCCDK1008200	C8n2	C208
FCCDK1008200	C8n2	C209
FCCDK1008200	C8n2	C210
FCCDK1008200	C8n2	C211
FCCDK1008200	C8n2	C212
FCXCD2470000	470p	C213
FCXCD2470000	470p	C214
FCXCD2470000	470p	C215
FCXCD2470000	470p	C216
FCCDK1003300	C3n3	C217
FCCDK1003300	C3n3	C218
FCCDK1003300	C3n3	C219
FCCDK1003300	C3n3	C220
FCCDK1003300	C3n3	C221
FCCDK1003300	C3n3	C222
FCCDK1002200	C2n2	C223
FCCDK1002200	C2n2	C224
FCCDK1002200	C2n2	C225
FCCDK1002200	C2n2	C226
FCCDK1002200	C2n2	C227
FCCDK1002200	C2n2	C228
FCXCD2220000	220p	C229
FCXCD2220000	220p	C230
FCXCD2220000	220p	C231
FCXCD2220000	220p	C232
FCXCD2220000	220p	C233
FCXCD2220000	220p	C234
FCCE25010000	10u/50	C235
FCXCD4010000	10n	C236
FCCE25010000	10u/50	C237
FCXCD4010000	10n	C238
FCCE25010000	10u/50	C239
FCCE25010000	10u/50	C240
FCCE25010000	10u/50	C241
FCCE25010000	10u/50	C242
FCXCD1220000	22p	C243
FCXCD1220000	22p	C244
FCXCD1220000	22p	C245
FCXCD1220000	22p	C246
FCXCD1220000	22p	C247
FCXCD1220000	22p	C248



**PARTS LIST: PRINTED CIRCUIT 11.1019.03.00**

Code	Description	Reference
FCCDK1008200	C8n2	C249
FCCDK1008200	C8n2	C250
FCCE10000000	47u/16	C251
FCCE10000000	47u/16	C252
FCCE10000000	47u/16	C253
FCCE10000000	47u/16	C254
FCCE10000000	47u/16	C255
FCCE10000000	47u/16	C256
FCCDK1003300	C3n3	C257
FCCDK1003300	C3n3	C258
FCCDK1002200	C2n2	C259
FCCDK1002200	C2n2	C260
FCCDK1004700	C4n7	C261
FCCDK1004700	C4n7	C262
FCXCD2220000	220p	C263
FCCDK1004700	C4n7	C264
FCCDK1004700	C4n7	C265
FCCDK1004700	C4n7	C266
FCCDK1004700	C4n7	C267
FCXCD2220000	220p	C268
FCXCD1220000	22p	C269
FCXCD1220000	22p	C270
FCCE10000000	47u/16	C271
FCCE10000000	47u/16	C272
FCCDK1004700	C4n7	C273
FCCDK1004700	C4n7	C274
FCCI01019000	Printed Board 11.1019	CI101
FCXZ00005600	Z5.6V	D108
FCXZ00005600	Z5.6V	D109
FCLEDSMD2000	TLMH3100	D110
FCXDDBAS2800	BAS28	D111
FCLEDSMD2000	TLMH3100	D112
FCXDDBAS2800	BAS28	D118
FCXDDBAS2800	BAS28	D119
FCXDDBAS2800	BAS28	D120
FCXDDBAS2800	BAS28	D121
FCXFER010000	Ferrite 31	FB103
FCICK6R1008V	K6R1008V1D	IC108
FCIC18F23200	PIC18F2320	IC109
FCIC02464000	24LC64	IC110
FCIC56364100	DSP56364	IC111
FCIC74040100	74HC04	IC112
FCTRMUN53110	MUN5311DW1T1	IC113
FCIC53610100	CS5361	IC114
FCIC43620100	CS4362	IC115
FCTRH1C0300	HN1C03FU	IC116
FCTRH1C0300	HN1C03FU	IC117
FCTRH1C0300	HN1C03FU	IC118
FCIC4580E000	NJM4580E	IC119
FCIC4580E000	NJM4580E	IC120
FCIC4580E000	NJM4580E	IC121
FCIC4580E000	NJM4580E	IC122
FCIC4580E000	NJM4580E	IC123
FCIC4580E000	NJM4580E	IC124
FCIC20722000	TLE2072A	IC125
FCTERM012000	Jumper Pin	J119

**PARTS LIST: PRINTED CIRCUIT 11.1019.03.00**

Code	Description	Reference
FCTERM012000	Jumper Pin	J120
FCTERM012000	Jumper Pin	J121
FCTERM012000	Jumper Pin	J122
FCTERM012000	Jumper Pin	J123
FCTERM012000	Jumper Pin	J124
FCTERM012000	Jumper Pin	J125
FCTERM012000	Jumper Pin	J126
FCTERM012000	Jumper Pin	J127
FCTERM012000	Jumper Pin	J128
FCTERM012000	Jumper Pin	J129
FCTERM012000	Jumper Pin	J130
FCTERM012000	Jumper Pin	J131
FCTERM012000	Jumper Pin	J132
FCCTM0005000	B5B-EH-A	J134
FCTERM012000	Jumper Pin	J133
FCBASJ020000	YKB21-5009	J136
FCBASJ020000	YKB21-5009	J137
FCCHKX068000	68uH 0.13A	L104
FCCHKX068000	68uH 0.13A	L105
FCCHKX068000	68uH 0.13A	L106
FCXTT0847000	BC847B	Q101
FCXR54100000	10k0	R123
FCXR53909000	9k09	R124
FCXR53100000	1k0	R125
FCXR53100000	1k0	R126
FCXR52464000	464	R127
FCXR53464000	4k64	R128
FCXR54100000	10k0	R129
FCXR53464000	4k64	R130
FCXR54100000	10k0	R131
FCXR54464000	46k4	R132
FCXR54100000	10k0	R133
FCXR54100000	10k0	R134
FCXR54100000	10k0	R135
FCXR54100000	10k0	R136
FCRX62680000	4 x 68	R137
FCXR54100000	10k0	R138
FCXR53147000	1k47	R139
FCXR54100000	10k0	R140
FCXR53215000	2k15	R141
FCXR53100000	1k0	R142
FCXR53100000	1k0	R143
FCXR56100000	1M	R144
FCXR53147000	1k47	R145
FCXR54100000	10k0	R146
FCXR54100000	10k0	R147
FCXR54100000	10k0	R148
FCXR53464000	4k64	R149
FCXR54100000	10k0	R150
FCXR54100000	10k0	R151
FCXR54464000	46k4	R152
FCXR54464000	46k4	R153
FCXR54464000	46k4	R154
FCXR54464000	46k4	R155
FCRX62680000	4 x 68	R156
FCXR53464000	4k64	R157

**PARTS LIST: PRINTED CIRCUIT 11.1019.03.00**

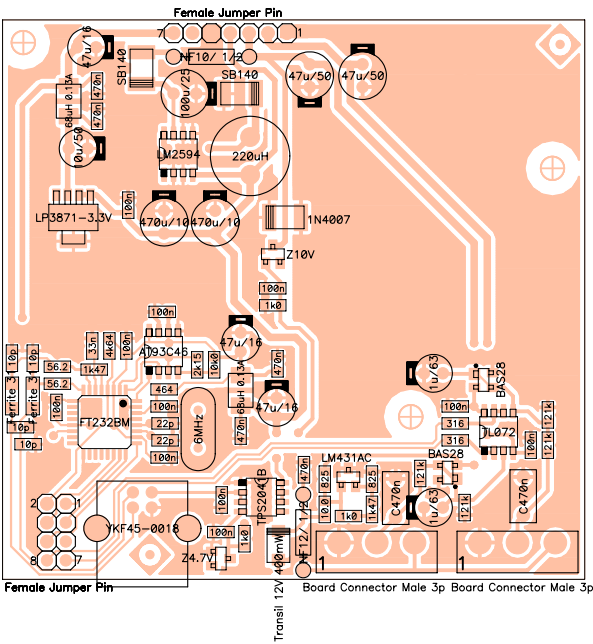
<b>Code</b>	<b>Description</b>	<b>Reference</b>
FCXR54100000	10k0	R158
FCXR53215000	2k15	R159
FCXR53215000	2k15	R160
FCXR53215000	2k15	R161
FCXR53215000	2k15	R162
FCXR53215000	2k15	R163
FCXR53215000	2k15	R164
FCXR55100000	100k	R165
FCXR55100000	100k	R166
FCXR55100000	100k	R167
FCXR55100000	100k	R168
FCXR55100000	100k	R169
FCXR55100000	100k	R170
FCXR52464000	464	R171
FCXR52464000	464	R172
FCXR52464000	464	R173
FCXR52464000	464	R174
FCXR52464000	464	R175
FCXR52464000	464	R176
FCXR52619000	619	R177
FCXR52100000	100.0	R178
FCXR52100000	100.0	R179
FCXR52619000	619	R180
FCXR52619000	619	R181
FCXR52100000	100.0	R182
FCXR52100000	100.0	R183
FCXR52619000	619	R184
FCXR53121000	1k21	R185
FCXR53121000	1k21	R186
FCXR53121000	1k21	R187
FCXR53121000	1k21	R188
FCXR53121000	1k21	R189
FCXR53121000	1k21	R190
FCXR53121000	1k21	R191
FCXR53121000	1k21	R192
FCXR53121000	1k21	R193
FCXR53121000	1k21	R194
FCXR53121000	1k21	R195
FCXR53121000	1k21	R196
FCXR64243000	24k3 0.5%	R197
FCXR64243000	24k3 0.5%	R198
FCXR64243000	24k3 0.5%	R199
FCXR64243000	24k3 0.5%	R200
FCXR64243000	24k3 0.5%	R201
FCXR64243000	24k3 0.5%	R202
FCXR64243000	24k3 0.5%	R203
FCXR64243000	24k3 0.5%	R204
FCXR55100000	100k	R205
FCXR55100000	100k	R206
FCXR52464000	464	R207
FCXR52464000	464	R208
FCXR53147000	1k47	R209
FCXR53147000	1k47	R210
FCXR53147000	1k47	R211
FCXR53147000	1k47	R212
FCXR55100000	100k	R213

**PARTS LIST: PRINTED CIRCUIT 11.1019.03.00**

<b>Code</b>	<b>Description</b>	<b>Reference</b>
FCXR55100000	100k	R214
FCXR55100000	100k	R215
FCXR55100000	100k	R216
FCXR53121000	1k21	R217
FCXR53121000	1k21	R218
FCXR53121000	1k21	R219
FCXR53121000	1k21	R220
FCXR55100000	100k	R221
FCXR55100000	100k	R222
FCXR55100000	100k	R223
FCXR55100000	100k	R224
FCXR55100000	100k	R225
FCXR55100000	100k	R226
FCXR52316000	316	R227
FCXR52316000	316	R228
FCXR52316000	316	R229
FCXR52316000	316	R230
FCXR52316000	316	R231
FCXR52316000	316	R232
FCXR53196000	1k96	R233
FCXR53196000	1k96	R234
FCXR53196000	1k96	R235
FCXR53196000	1k96	R236
FCXR53147000	1k47	R237
FCXR53147000	1k47	R238
FCXR52100000	100.0	R239
FCXR52100000	100.0	R240
FCXR52100000	100.0	R241
FCXR52100000	100.0	R242
FCXR53237000	2k37	R243
FCXR53237000	2k37	R244
FCXR53237000	2k37	R245
FCXR53237000	2k37	R246
FCXR55100000	100k	R247
FCXR55100000	100k	R248
FCXR52316000	316	R249
FCXR52316000	316	R250
FCXR52316000	316	R251
FCXR52316000	316	R252
FCXR53196000	1k96	R253
FCXR53196000	1k96	R254
FCXR53196000	1k96	R255
FCXR53147000	1k47	R256
FCXR53147000	1k47	R257
FCXR53196000	1k96	R258
FCXR50000000	0	RX103
FCSEPCI01000	Spacer M3x16	SP100
FCSEPCI01000	Spacer M3x16	SP101
FCSEPCI01000	Spacer M3x16	SP102
FC4R00214000	1002.01.40	WI101
FCCRIS010000	10MHz	X102
FCCRIS012288	12,288MHz	X103



date:	050420
-------	--------



<div><div>ECLEREE</div><div>LABORATORIO DE ELECTRO-ACUSTICA S.A.</div></div>		related to: circuit no: 11.1020-03.00		side: Component
		schema no: 10.0702-01.02		view: Value
		insertion file no: 81.0099-01.02		
		project n: F12-04	title:  Top Ct.	
number: 33.0933	version: 01.01	product n: AMIC		
drawn by: M. Amoros	date: 050420	approved: Domingo Mele		

**PARTS LIST: PRINTED CIRCUIT 11.1020.03.00**

<b>Code</b>	<b>Description</b>	<b>Reference</b>
FCXCD4470000	470n	C101
FCXCD4470000	470n	C102
FCCE1000000	47u/16	C103
FCCE1000000	47u/16	C104
FCCE1000000	47u/16	C105
FCXCD4470000	470n	C106
FCXCD4470000	470n	C107
FCCE25010000	10u/50	C108
FCXCD4100000	100n	C109
FCXCD1100000	10p	C110
FCXCD4470000	470n	C111
FCXCD4100000	100n	C112
FCXCD1100000	10p	C113
FCXCD4100000	100n	C114
FCXCD4100000	100n	C115
FCXCD1100000	10p	C116
FCCE03000000	470u/10	C117
FCXCD4100000	100n	C118
FCXCD4033000	33n	C119
FCXCD1220000	22p	C120
FCXCD1220000	22p	C121
FCXCD1100000	10p	C122
FCCE03000000	470u/10	C123
FCCDK1470000	C470n	C124
FCCDK1470000	C470n	C125
FCXCD4100000	100n	C126
FCCE30001000	1u/63	C127
FCXCD4100000	100n	C128
FCCE15100000	100u/25	C129
FCCE30001000	1u/63	C130
FCXCD4100000	100n	C131
FCXCD4100000	100n	C132
FCXCD4100000	100n	C133
FCXCD4100000	100n	C134
FCCE25047000	47u/50	C135
FCCE25047000	47u/50	C136
FCCI01020000	Printed Board 11.1020	CI102
FCDDKE120000	Transil 12V 400mW	D101
FCXDDSB14000	SB140	D102
FCXDDBAS2800	BAS28	D103
FCXZ00004700	Z4.7V	D104
FCXDDBAS2800	BAS28	D105
FCXDDSB14000	SB140	D106
FCXZ00010000	Z10V	D107
FCXDD4007000	1N4007	D117
FCXFER010000	Ferrite 31	FB101
FCXFER010000	Ferrite 31	FB102
FCIC43101000	LM431AC	IC101
FCREG3871000	LP3871-3.3V	IC102
FCIC2041B000	TPS2041B	IC103
FCIC093C4600	AT93C46	IC104
FCIC02320000	FT232BM	IC105
FCIC25941000	LM2594	IC106
FCIC07201000	TL072	IC107
FCBASUSB0000	YKF45-0018	J101
FCREG1017000	Board Connector Male 3p	J102

**PARTS LIST: PRINTED CIRCUIT 11.1020.03.00**

<b>Code</b>	<b>Description</b>	<b>Reference</b>
FCREG1017000	Board Connector Male 3p	J103
FCTERM007000	Female Jumper Pin	J104
FCTERM007000	Female Jumper Pin	J105
FCTERM007000	Female Jumper Pin	J106
FCTERM007000	Female Jumper Pin	J107
FCTERM007000	Female Jumper Pin	J108
FCTERM007000	Female Jumper Pin	J109
FCTERM007000	Female Jumper Pin	J110
FCTERM007000	Female Jumper Pin	J111
FCTERM007000	Female Jumper Pin	J112
FCTERM007000	Female Jumper Pin	J113
FCTERM007000	Female Jumper Pin	J114
FCTERM007000	Female Jumper Pin	J115
FCTERM007000	Female Jumper Pin	J116
FCTERM007000	Female Jumper Pin	J117
FCTERM007000	Female Jumper Pin	J118
FCCHKX068000	68uH 0.13A	L101
FCCHKX068000	68uH 0.13A	L102
FCIND0040000	220uH	L103
FCXR52825000	825	R101
FCXR53100000	1k0	R102
FCXR53147000	1k47	R103
FCXR52825000	825	R104
FCXR51100000	10.0	R105
FCRF22120000	NF12/ 1/2	R106
FCXR54100000	10k0	R107
FCXR51562000	56.2	R108
FCXR51562000	56.2	R109
FCXR53215000	2k15	R110
FCXR55121000	121k	R111
FCXR53147000	1k47	R112
FCXR53464000	4k64	R113
FCXR55121000	121k	R114
FCXR53100000	1k0	R115
FCXR55121000	121k	R116
FCXR53100000	1k0	R117
FCXR55121000	121k	R118
FCRF22100000	NF10/ 1/2	R119
FCXR52316000	316	R120
FCXR52464000	464	R121
FCXR52316000	316	R122
FCCRIS006000	6MHz	X101



## HARDWARE (.amic)

Measuring **.amic** as a independent device

### Processing:

A/D & D/A

24 bit, 48kHz

DSP

48 bits

Latency

0.585ms

### Input / Output:

2 Inputs (internal) / 4 outputs (2 internal & 2 external)

Input Levels: Nominal / Maximum

0dBV / +12dBV

Input attenuator:

Stepless from -84dB to +12dB

Input Impedance:

Balanced, 30k $\Omega$

Stack Output impedance:

300 $\Omega$  balanced

CMRR (20Hz - 20kHz):

>60dB

Distortion @ 0dBV 20Hz-20kHz:

<0.008%

Frequency Response (-0.3dB):

10Hz - 20kHz

Noise from 20Hz to 20kHz:

below -105dB

Crosstalk (20Hz-20kHz):

better than -60dB CH1 to CH2 & Stack1 to Stack2

Maximum Delay:

910ms (312.5m) total for all 4 channels.

Delay resolution:

20.83 $\mu$ s (7mm)

### Compressor / Limiter:

Threshold

from -48dBV to +12dBV

Ratio

1:1 to  $\infty$ :1 (limiter)

Attack time

Auto or from 0.1ms to 150ms.

Release time

Auto or from 1ms to 5s.

High & Low pass Crossover filters

Butterworth in 6/12/18/24dB/oct.

Bessel in 12/18/24dB/oct

Linkwitz-Riley in 12/24dB/oct.

Parametric Eq types (10 max. per output)

-Bypass

-Param. Eq. 20Hz-20kHz; -60/+12dB; Q from =.3 to 200

-Low & High Shelf 6/12 dB/oct

-Low & High Pass 6/12 dB/oct.

-All-Pass 1/2 order

Built In signal generator

-Sine (20Hz to 20kHz)

-Polarity(20Hz to 20kHz)

-White

-Pink

Signal Mute

Yes

Signal Polarity Invert

Yes

Analog Volume remote control (0-10VDC)

0V.= no attenuation (0dB)

+10V. = full attenuation (- $\infty$ .)

Connectivity:

USB1.1 (2.0 compatible). Can provide supply to **.amic** while programming

Dimensions

143x75x30mm

Weight

230g.

## **SOFTWARE (.amiclab)**

### **.amiclab** Software

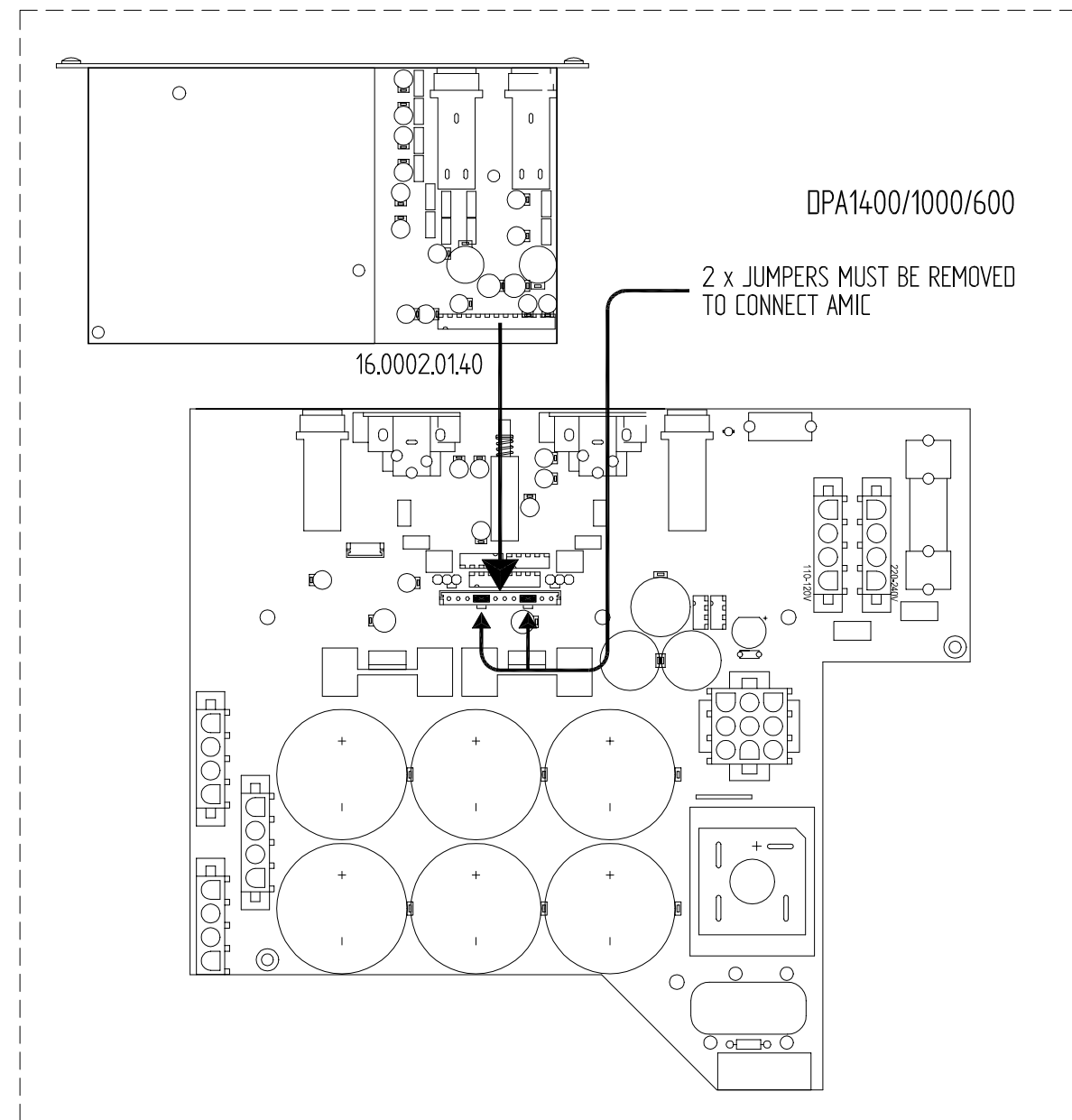
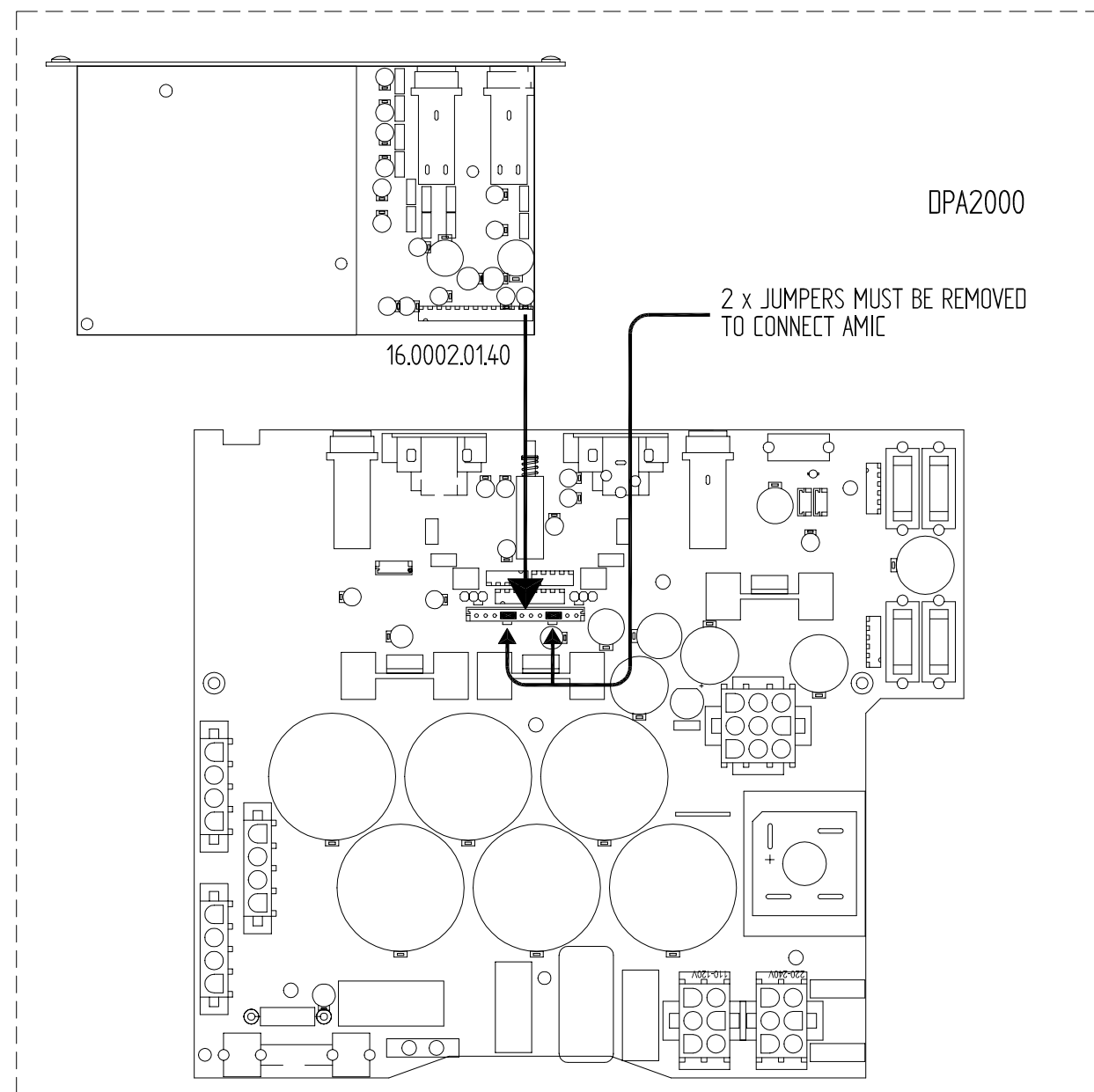
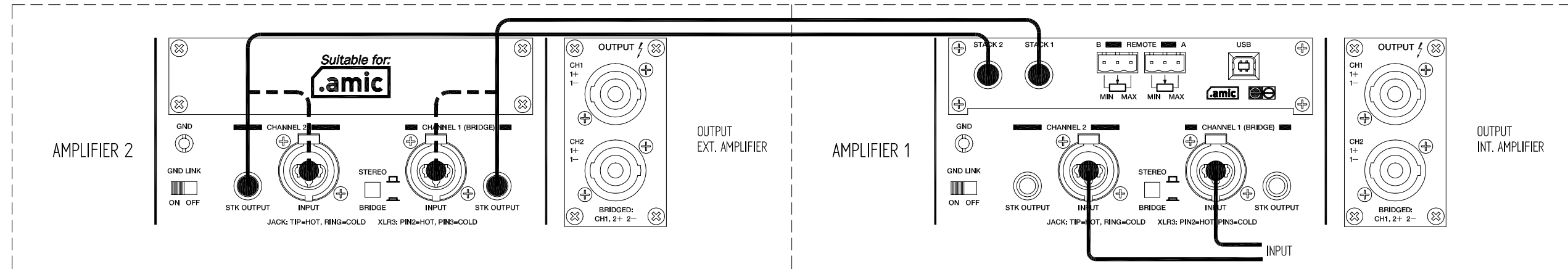
- Realtime full GUI of all functions
- Interactive graphical display
- Real time metering at input / output
- Save & Recall setup functions
- Firmware update capability
- Password protection

### Operating System:

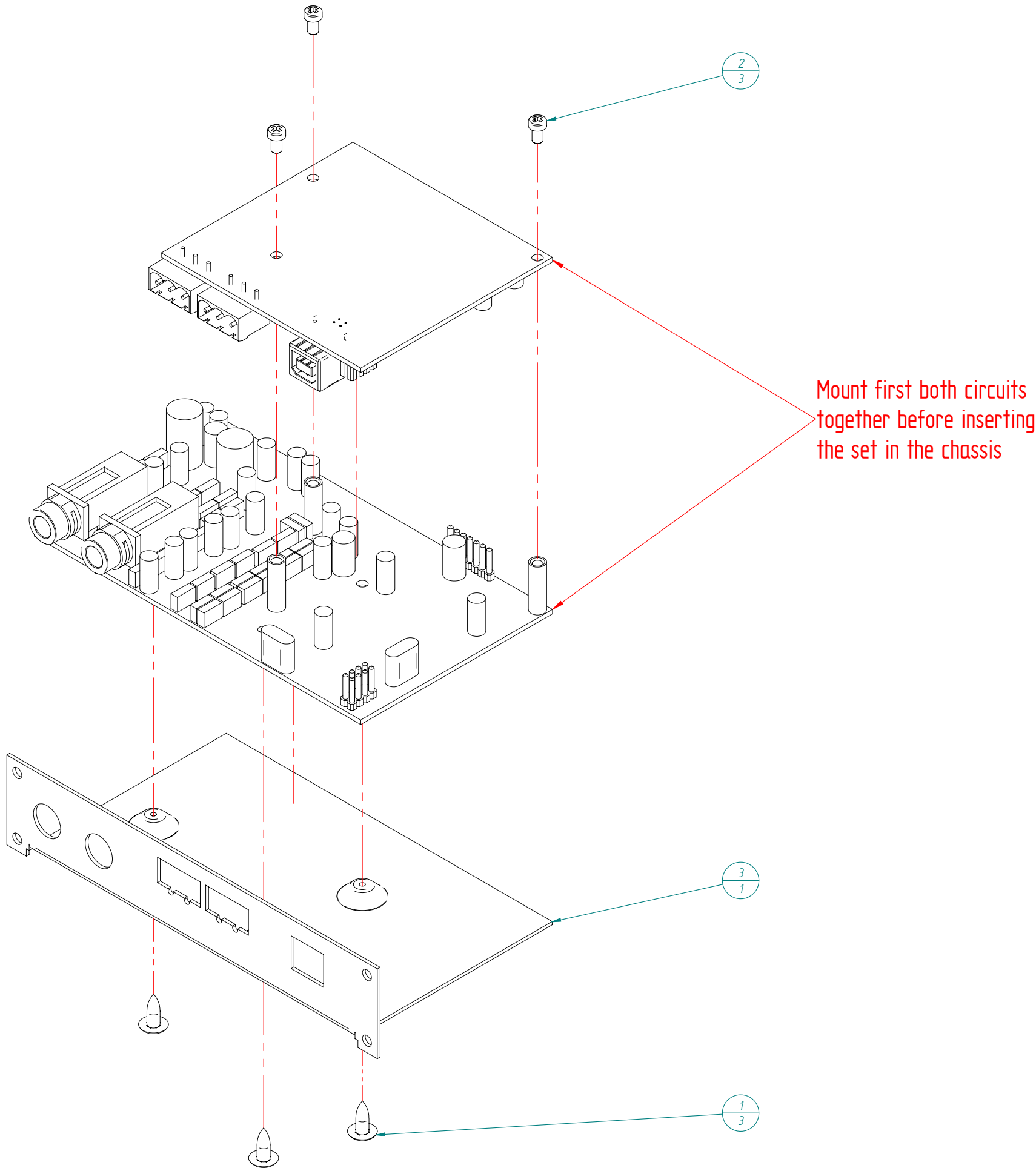
Windows® 98SE; WMe; W2000 Prof. (SP4);  
XP Home (SP1); XP Prof. (SP1)

### Minimum **.amiclab** System Requirements:

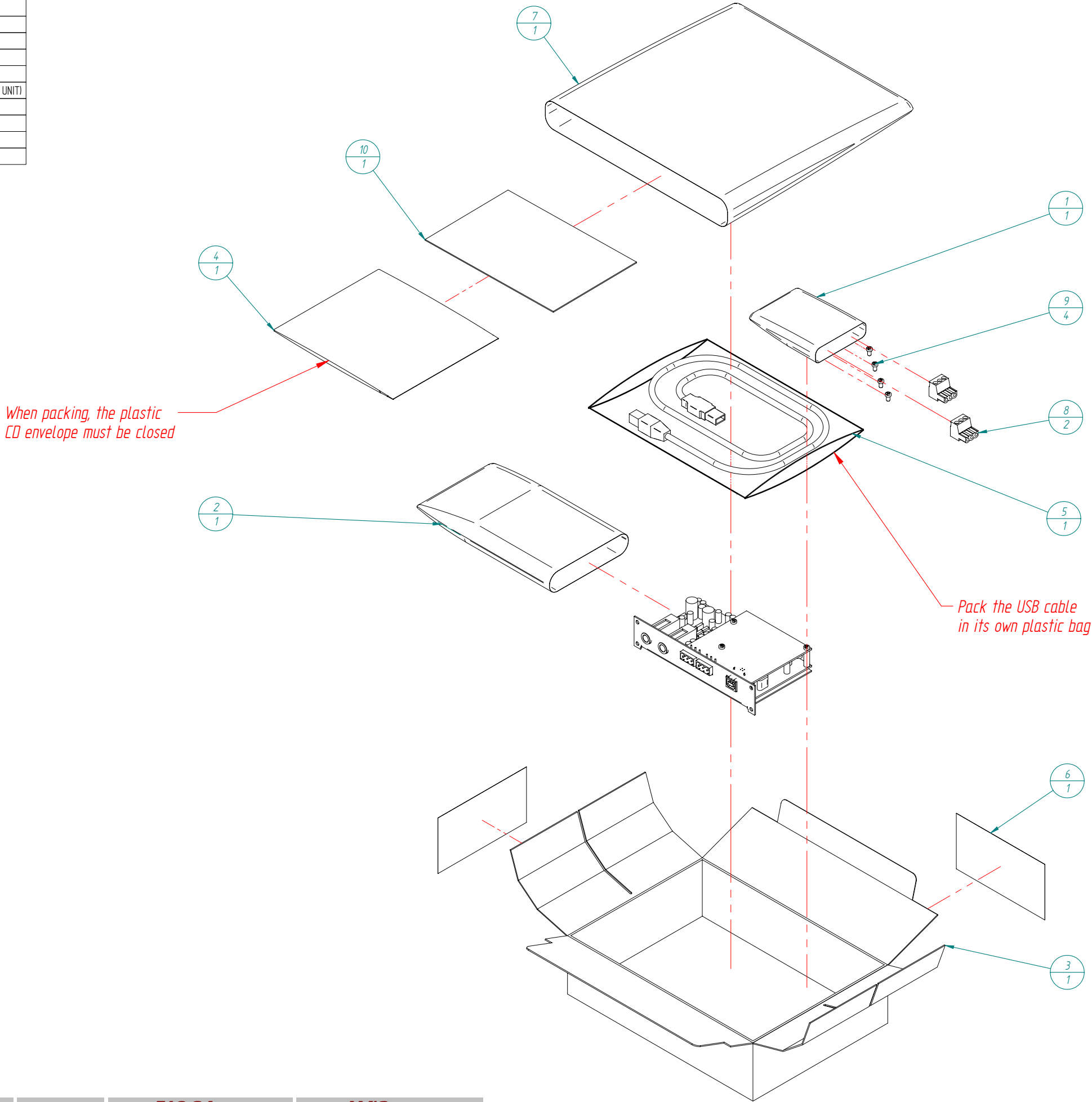
Pentium III ® 600MHz  
128MB RAM  
20MB HDD free space  
800x600 pixels & 16bits color display



Nº	Qty	Code	Description
1	3	FCT560420950	METAL SCREW 4,2x9,5 BLACK
2	3	FCT850300500	SCREW M3x5 REDUCED HEAD
3	1	FP0286500000	BASE CHASSIS



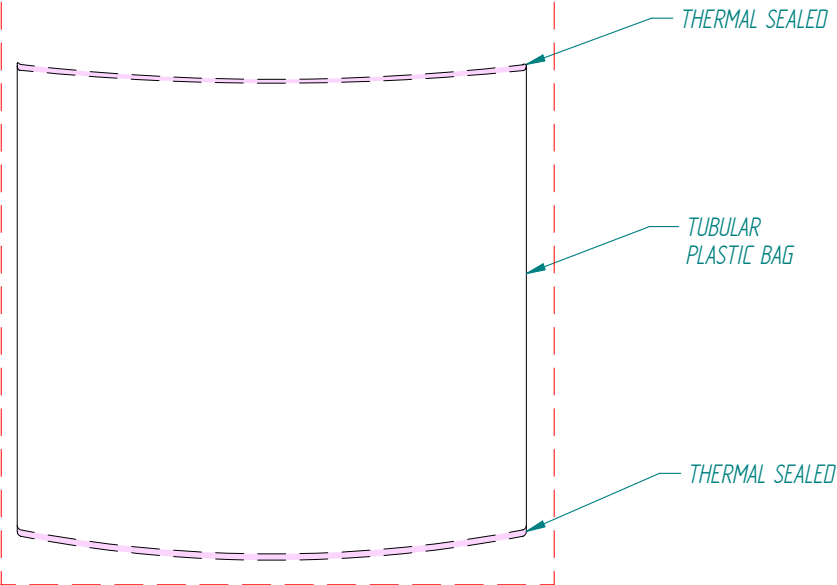
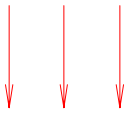
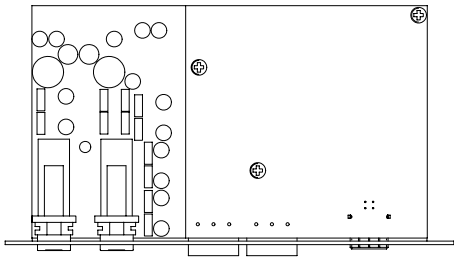
Nº	Qty	Code	Description
1	1	FCBOL0010000	BAG 60x80
2	1	FCBOL0020000	PLASTIC BAG 120x180
3	1	FCCAISTA2800	PACKING CARDBOARD BOX
4	1	FCCDR0030000	AMIC.LAB SOFTWARE CD
5	1	FCCONXUSB010	USB A-B INTERCONNECTION CABLE
6	1	FCETI0951140	PRODUCT LABEL PACK (ONE FOR EACH UNIT)
7	1	FCFUNMAN0000	USER MANUAL BAG
8	2	FCREG1007000	CONNECTING TERMINAL STRIPS 3C
9	4	FCT850300500	SCREW M3x5 REDUCED HEAD
10	1	FCTARJG00000	WARRANTY CARD



Nº	Qty	Code	Description
1	1	FCBOL0010000	BAG 60x80
2	1	FCCAUSTA2800	PACKING CARDBOARD BOX
3	1	FCCDR0030000	AMIC.LAB SOFTWARE CD
4	1	FCCONXUSB010	USB A-B INTERCONNECTION CABLE
5	1	FCETI0951140	PRODUCT LABEL PACK (ONE FOR EACH UNIT)
6	1	FCFUNMAN0000	USER MANUAL BAG
7	2	FCREG1007000	CONNECTING TERMINAL STRIPS 3C
8	4	FCT850300500	SCREW M3x5 REDUCED HEAD
9	1	FCTARJG000000	WARRANTY CARD
10	1	GENERIC	TUBULAR SEALED PLASTIC BAG

Packing process for AMIC module:

- Insert the module in the plastic bag.
- Seal the plastic bag at both ends.
- Insert de set in the packing cardboard box.



When packing, the plastic CD envelope must be closed

In order to pack correctly the AMIC module in the tubular bag, consult the "Packing Process" at the left of this document

Pack the USB cable in its own plastic bag

THERMAL SEALED

TUBULAR PLASTIC BAG

THERMAL SEALED

OLD VERSION

