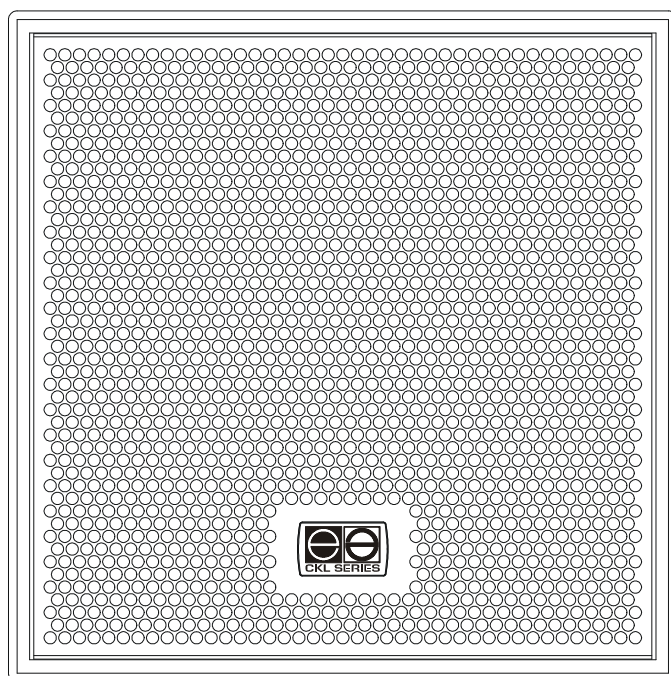
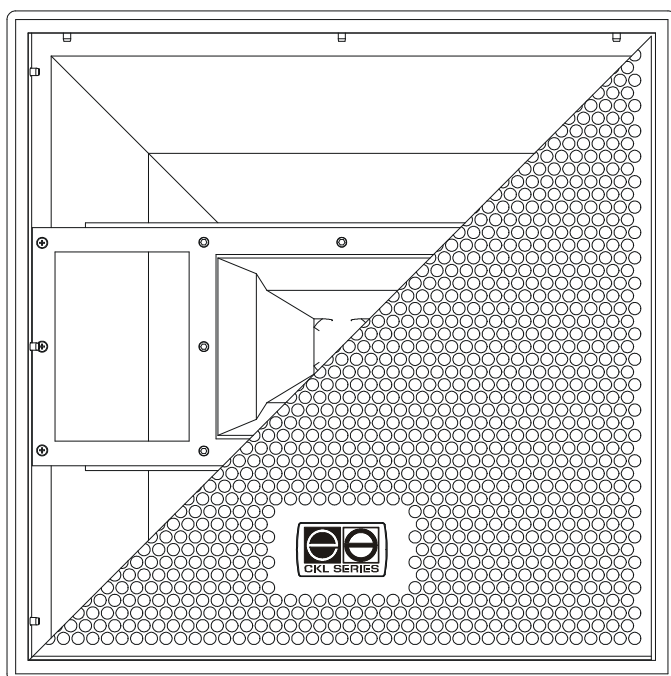


# CKL110T CKL SM115T SERVICE MANUAL



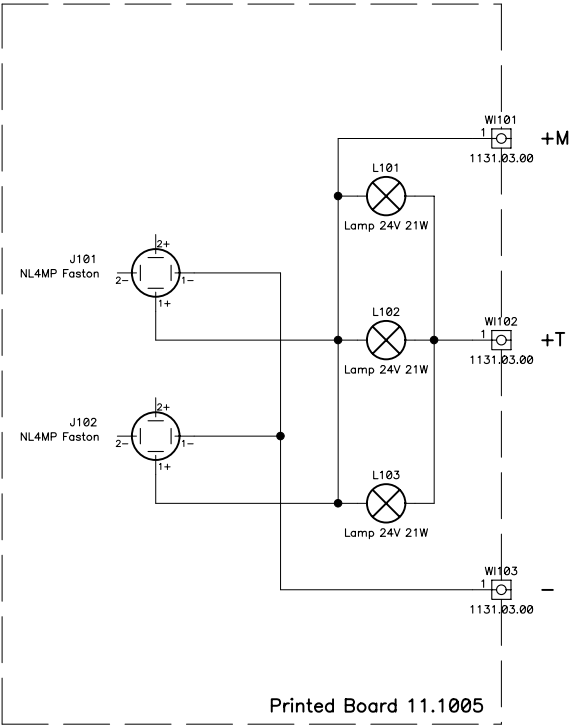
**ECLER**  
AUDIO CREATIVE POWER


# SERVICE MANUAL CKL T

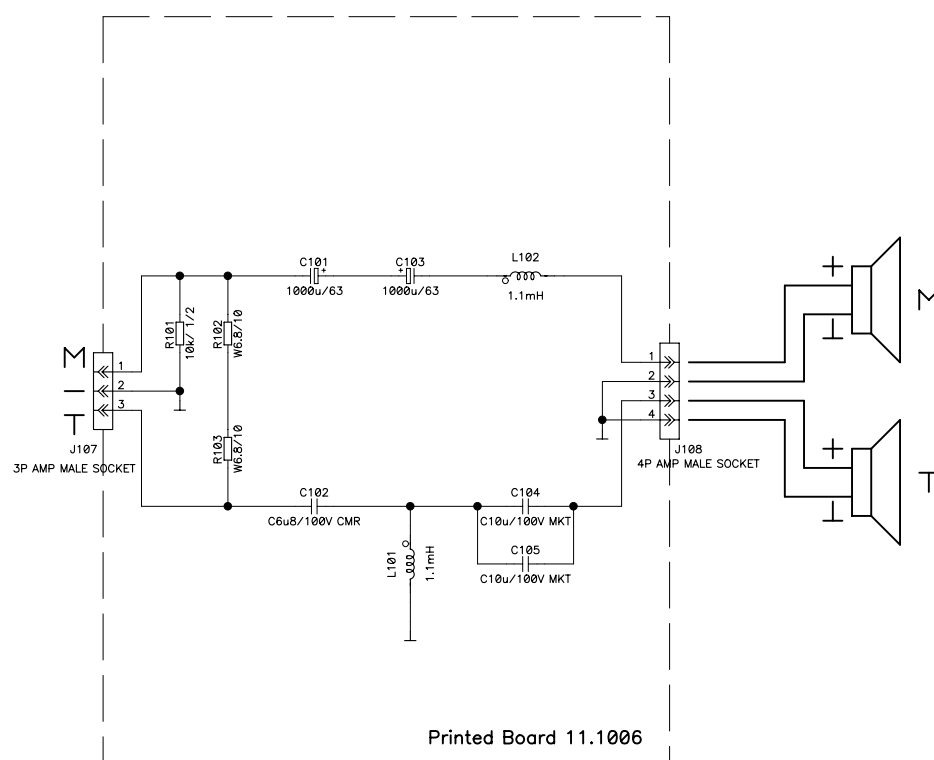
## INDEX

- TECHNICAL CHARACTERISTICS
- SCHEMATICS
- COMPONENTS LOCATION SCHEMA
- WIRING DIAGRAM
- MECHANICAL DIAGRAM
- PACKING DIAGRAM

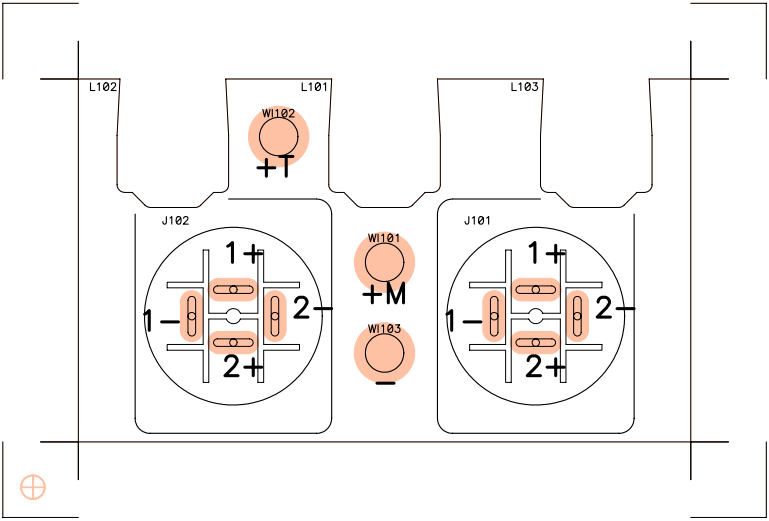
Ways	<b>CKL110</b>	<b>CKL SM115</b>
Nominal impedance	2	1
Max RMS power	8Ω	8Ω
Program power	350W	600W
Efficiency SPL 1W 1m	700W	1200W
Frequency response at -3dB	112dB	105dB
Horizontal dispersion	170Hz÷19kHz	70Hz÷280Hz
Vertical dispersion	80°@250Hz / 60°@4kHz	---
Dimensions WxHxD	80°@250Hz / 40°@4kHz	---
Weight	550x550x650mm	550x550x650mm
	47kg.	37,2kg.



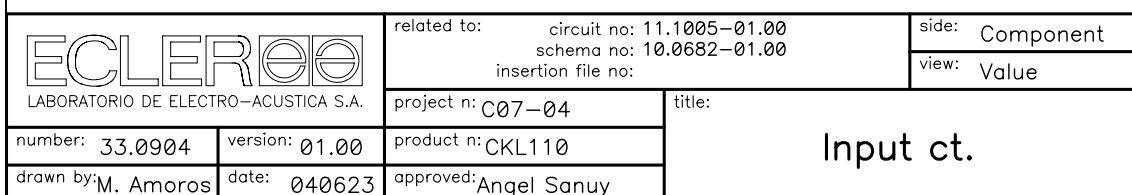
 LABORATORIO DE ELECTRO-ACUSTICA S.A.	drawn by: M. Amoros	date: 040623	approved: Angel Sanuy
	project n: C07-04	title:  Input sch.	
	product n: CKL110		
	number: 10.0682	version: 01.00	page: 1 of 1



<b>ECLEREO</b> LABORATORIO DE ELECTRO-ACUSTICA S.A.	drawn by: M. Amoros	date: 040623	approved: Angel Sanuy
	project n: C07-04	<b>Filter Sch.</b>	
	product n: CKL110		
	page: 1 of 1		
number: 10.0683	version: 01.00		



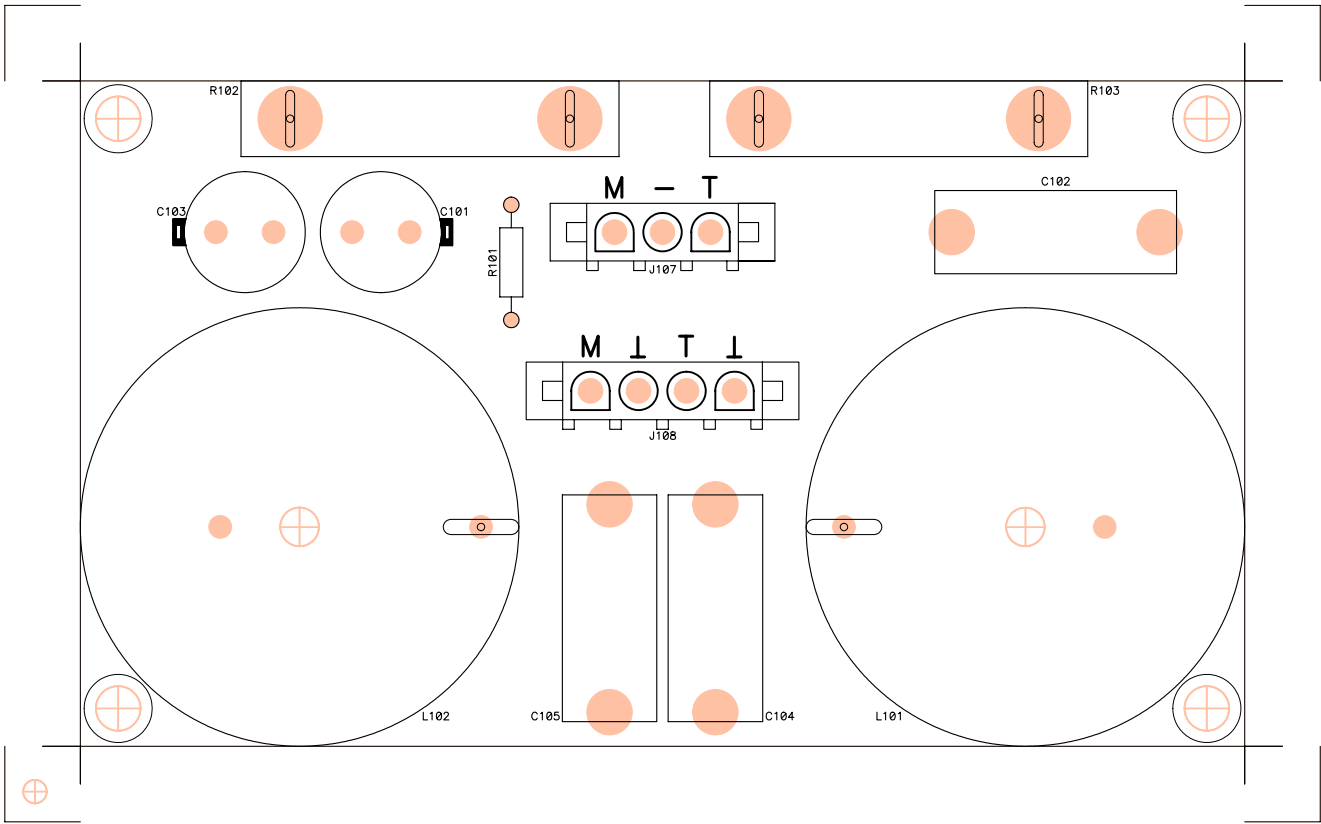
<div>ECLEREE</div> <div>LABORATORIO DE ELECTRO-ACUSTICA S.A.</div>	related to: circuit no: 11.1005-01.00	side: Component
		view: Reference
number: 33.0903	version: 01.00	project n: C07-04
drawn by: M. Amoros	date: 040623	product n: CKL110
		approved: Angel Sanuy
title: Input ct.		



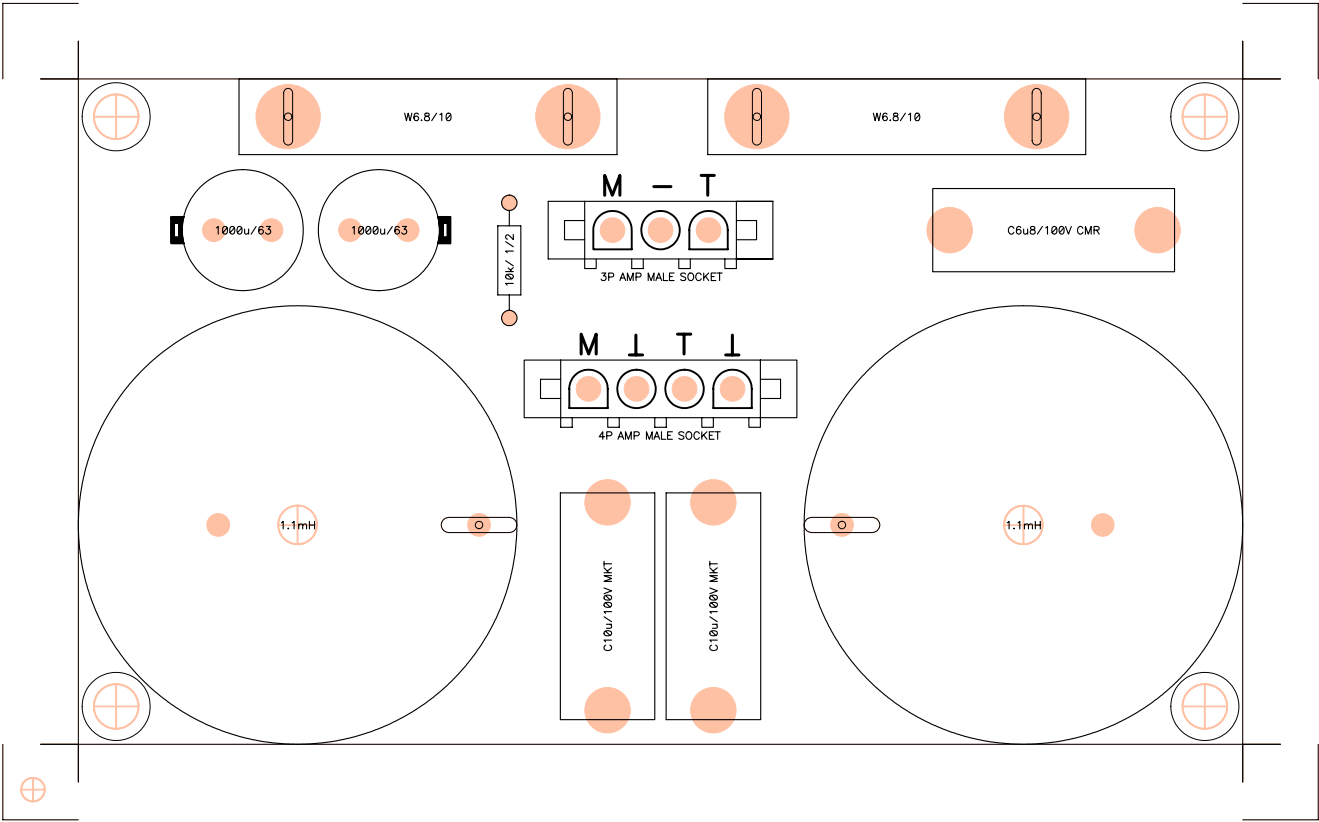
**PARTS LIST: PRINTED CIRCUIT 11.1005.01.00**

<b>Code</b>	<b>Description</b>	<b>Reference</b>
FCCI01005000	Printed Board 11.1005	CI101
FCBASS010000	NL4MP Faston	J101
FCBASS010000	NL4MP Faston	J102
FCBM02421000	Lamp 24V 21W	L101
FCBM02421000	Lamp 24V 21W	L102
FCBM02421000	Lamp 24V 21W	L103
FCOH13130000	1131.03.00	WI102





<div><div>ECLEREE</div><div>LABORATORIO DE ELECTRO-ACUSTICA S.A.</div></div>	related to:	side: Component
		view: Reference
number: 33.0905	version: 01.00	project n: C07-04
drawn by: M. Amoros	date: 040623	product n: CKL110
		approved: Angel Sanuy
title: Filter ct.		

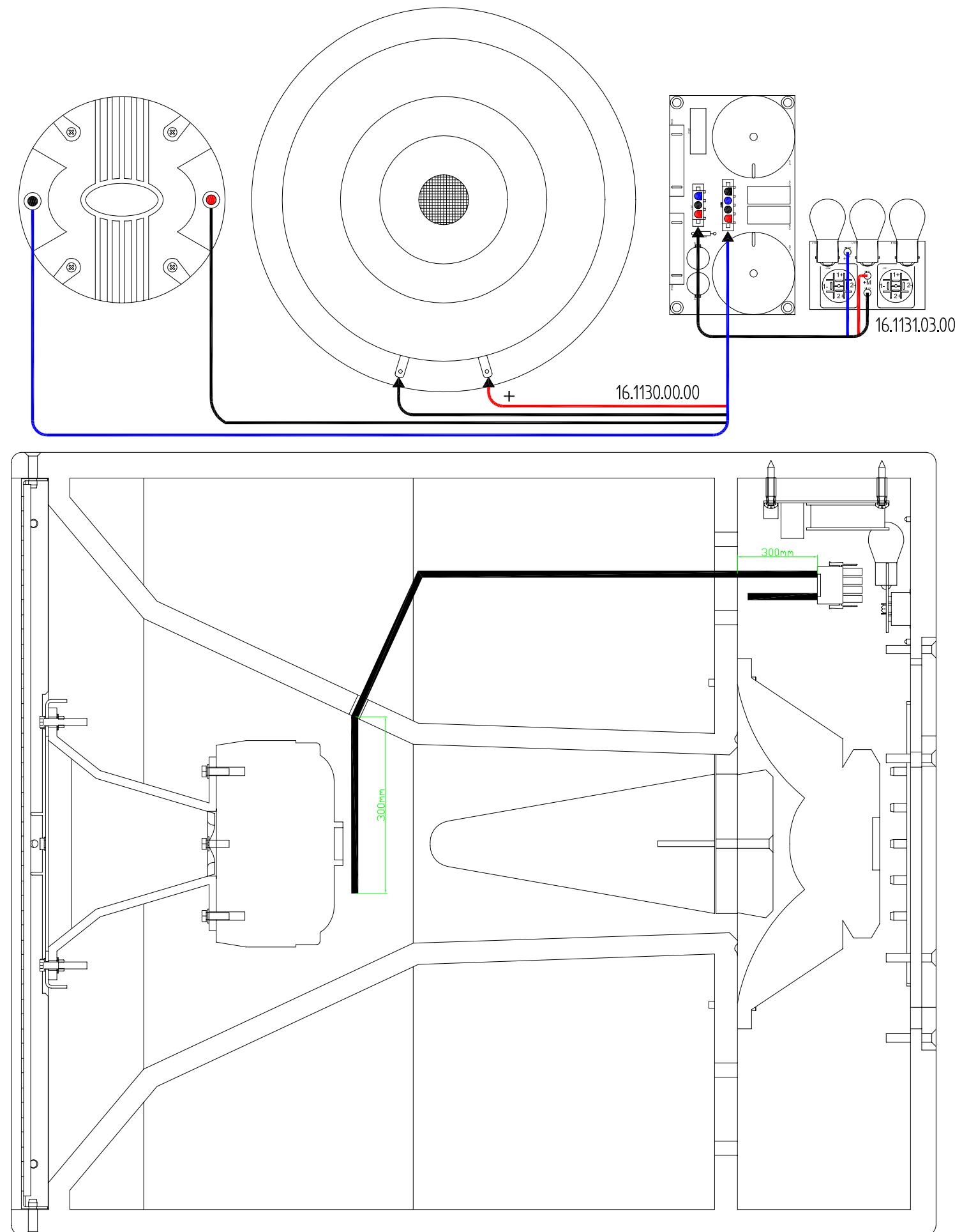


Note: Apply Clear Silicone Sealant in all the components

<div><div>ECLEREE</div><div>LABORATORIO DE ELECTRO-ACUSTICA S.A.</div></div>		related to: circuit no: 11.1006-01.00 schema no: 10.0683-01.00 insertion file no:		side: Component
		project n: C07-04	title:	view: Value
number: 33.0906	version: 01.00	product n: CKL110	Filter ct.	
drawn by: M. Amoros	date: 040623	approved: Angel Sanuy		

# **PARTS LIST: PRINTED CIRCUIT 11.1006.01.00**

<b>Code</b>	<b>Description</b>	<b>Reference</b>
FCREM0010000	Aluminum Rivet 4.8x6	AR101
FCREM0010000	Aluminum Rivet 4.8x6	AR102
FCCE30500000	1000u/63	C101
FCCDR1006800	C6u8/100V CMR	C102
FCCE30500000	1000u/63	C103
FCCDR1010000	C10u/100V MKT	C104
FCCDR1010000	C10u/100V MKT	C105
FCCIO1006000	Printed Board 11.1006	CI101
FCCTAMP03000	3P AMP MALE SOCKET	J107
FCCTAMP04000	4P AMP MALE SOCKET	J108
FCBB00080000	1.1mH	L101
FCBB00080000	1.1mH	L102
FCRC25100000	10k/ 1/2	R101
FCRYD0155200	W6.8/10	R102
FCRYD0155200	W6.8/10	R103



N°	Qty.	Code	Description
1	6	FCARDE040000	TOOTHED WASHER M4
2	8	FCARDE050000	TOOTHED WASHER M5
3	8	FCARN5000000	METAL WASHER 5X11,5X0,8 BLACK
4	2	FCASA3402000	CABINET METAL HANDLE
5	1	FCAV10HE3000	10 INCHES LOUDSPEAKER
6	2	FCBASS010000	SPEAKON SOCKET 4C
7	115	FCBURC010000	STICKER FOAM STRIP (units in cm)
8	1	FCCJMKL2919	CKL110T WOOD CABINET
9	6	FCREMS01500	FLYING TRACK 5u
10	1	FCDFD360000	2" HF HORN
11	1	FCGOES230000	PROTECTION FOAM CKL SERIES
12	1	FCGOESAWA000	SPEAK-ON PLATE RUBBER SEALANT
13	1	FCLXCKL00000	CKL LOGO STICKER
14	1	FCMT75000000	HF COMPRESSION DRIVER
15	4	FCSEPSRS8000	PLASTIC SPACER SRS8-10-01
16	28	FCT060453000	SCREW D RA81 4,5x30B
17	4	FCT070351700	SCREW DIN RA83 3,5x17B
18	4	FCT500291300	SCREW D7982 2,9x13
19	6	FCT700401500	SCREW DIN 7985 M4x16 BLACK
20	16	FCTALL530000	SCREW DIN912 M5X30
21	38	FCTALL635000	SCREW DIN7991 M6x35 ALLEN
22	8	FCTUE0050000	NUT M5
23	1	FP0274010000	SPEAK-ON CONNECTION PANEL
24	1	FP0281000000	HF HORN SUPPORT PLATE
25	1	FP0281300000	FRONTAL GRILLE
26	1	FP0284500000	SPEAK-ON SUPPORT PLATE
27	1	GENERIC	CROSSOVER CIRCUIT CKL H
28	1	GENERIC	SPEAK-ON CIRCUIT CKL H
29	4	GENERIC (SUPPLIER)	WASHER 5,5X10X1 MET
30	4	GENERIC (SUPPLIER)	SCREW DIN933E M5x16

Tighten all the M5 screws that hold the 10" loudspeaker with a force of 7 Nm and fix them with LOCTITE 243

APPLY SILICONE BETWEEN ALL HANDLES AND WOOD CABINET IN ORDER TO SEAL THE SET

Fix all M6 screws that hold the Flying Tracks with LOCTITE 243

HOLE TO PASS THRU THE COMPRESSION DRIVER CABLE

BOTTOM VIEW

REAR VIEW

BOTTOM

ECLEREO

drawn: *Jordi Folch*  
approved:

date: *060124*  
title:

project: *CD1-06*

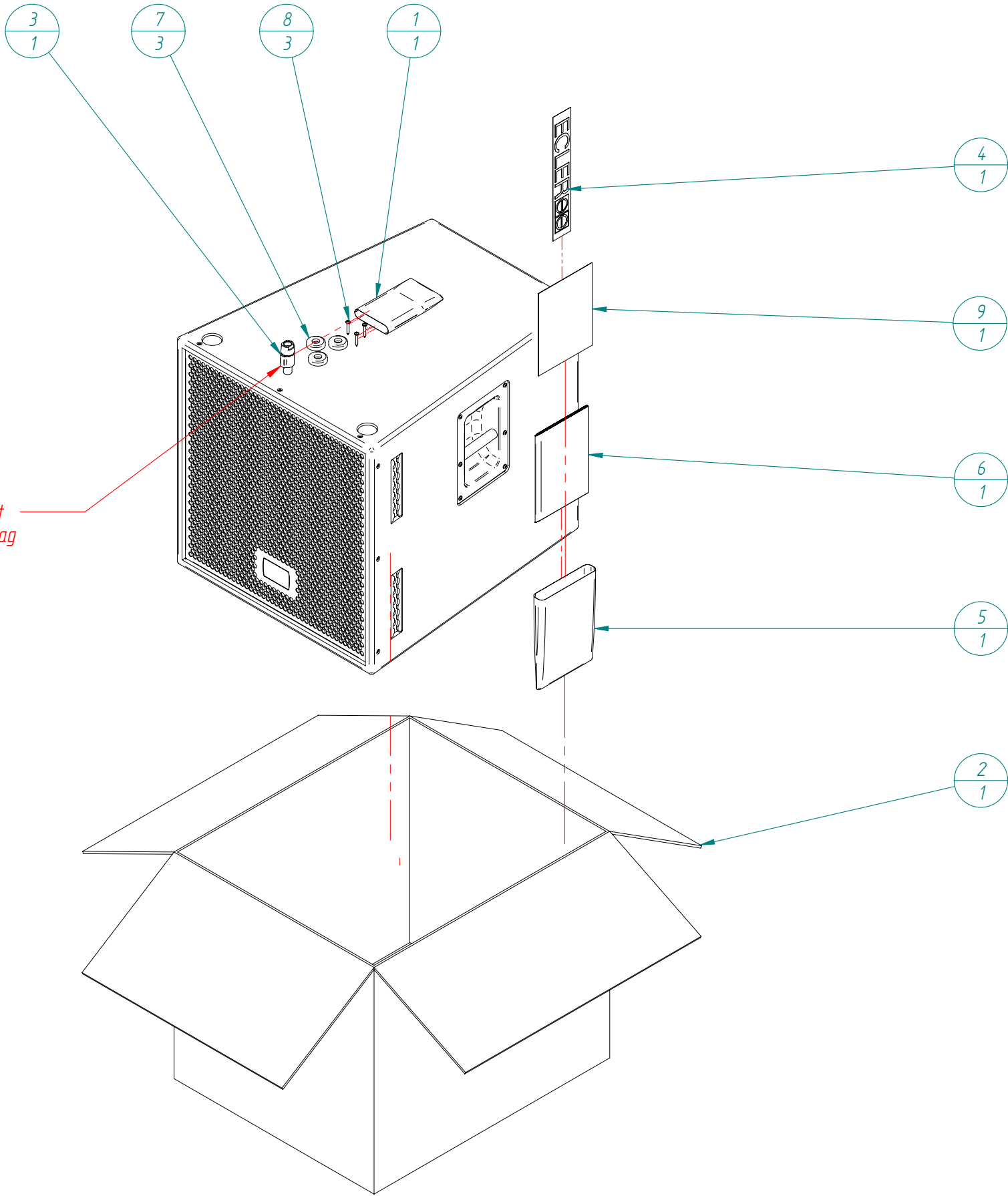
product: *CKL110T*

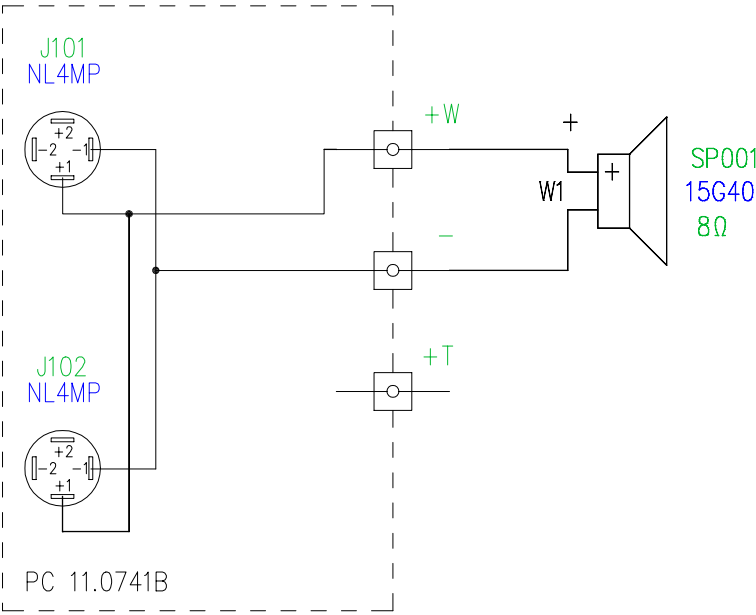
**MECHANICAL DIAGRAM**

number: *30.0222* version: *01.00*

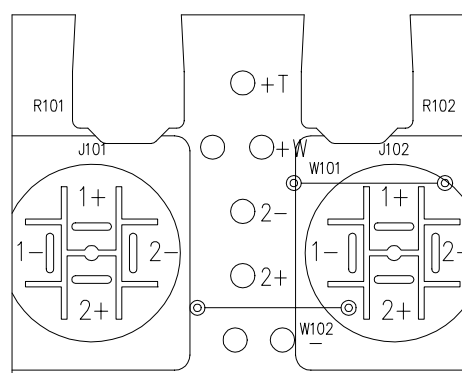
Nº	Qty.	Code	Description
1	1	FCBOL0020000	PLASTIC BAG 120x180
2	1	FCCAISTA2600	PACKING CARDBOARD BOX CKL SERIES
3	1	FCCONSP10000	MALE SPEAK ON 4C
4	1	FEETIECL1000	ECLER STICKER 300x50
5	1	FCFUNMAN0000	USER MANUAL BAG
6	1	FCMANCKL0000	USER MANUAL CKL SERIES
7	3	FCPIE4906000	RUBBER FOOT 38x15
8	3	FCT060453000	SCREW D RA81 4,5x30B
9	1	FCTARJG00000	WARRANTY CARD

Introduce the speak-on socket  
with its own original plastic bag  
in the 120x180 bag

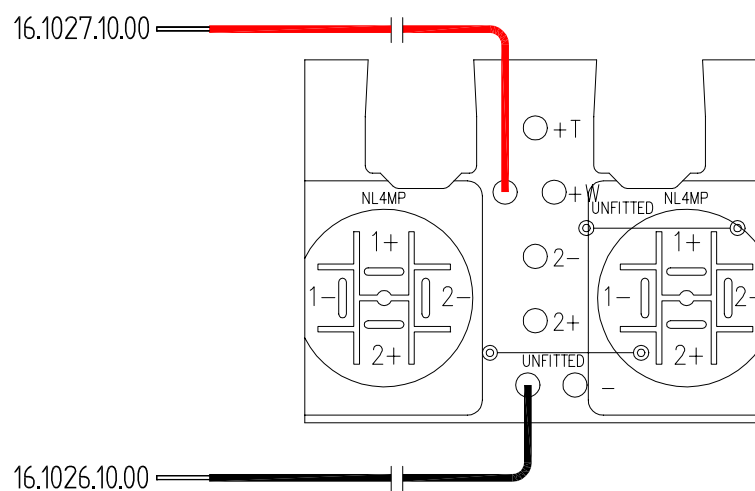




See parts list for more information about components.

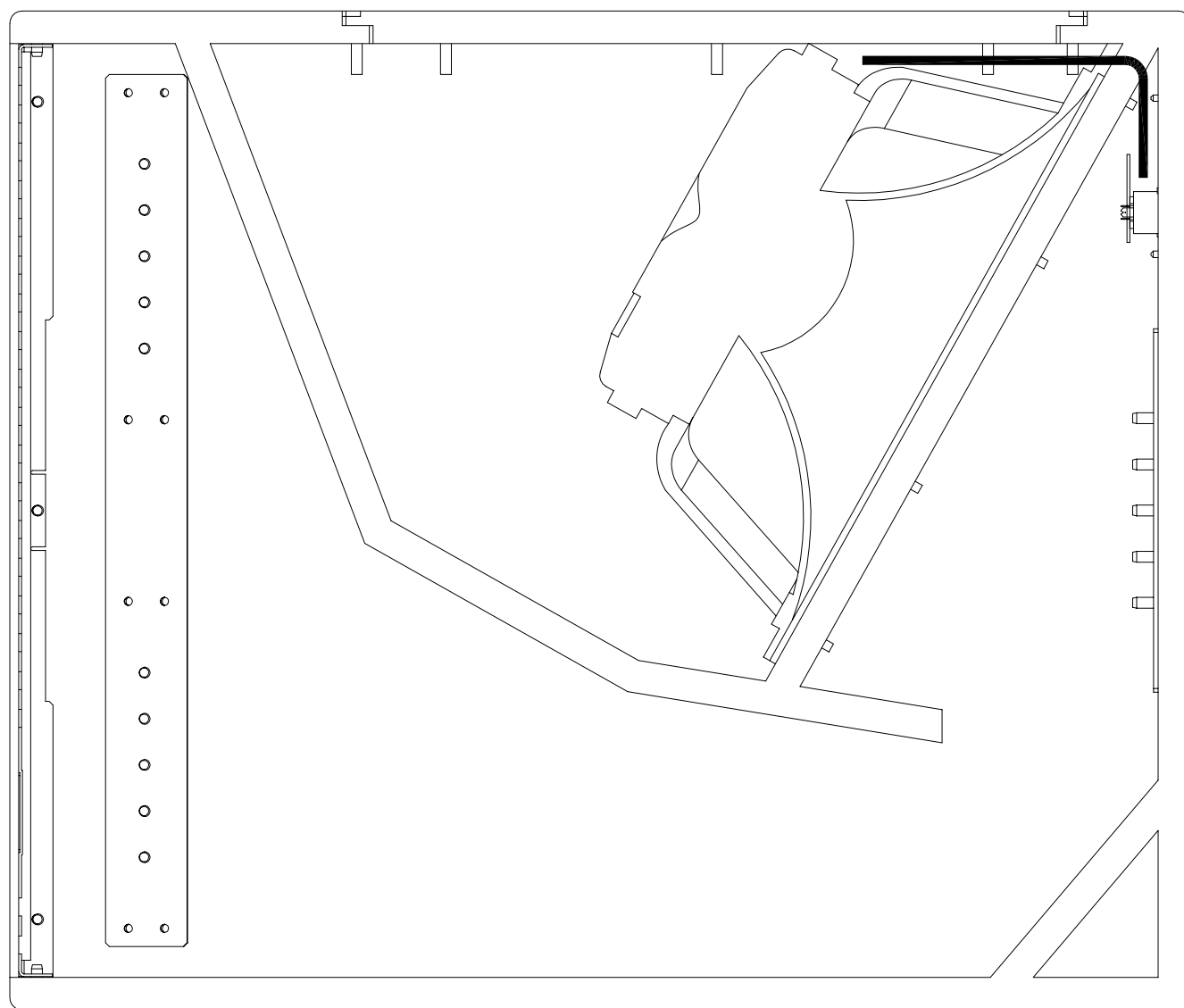
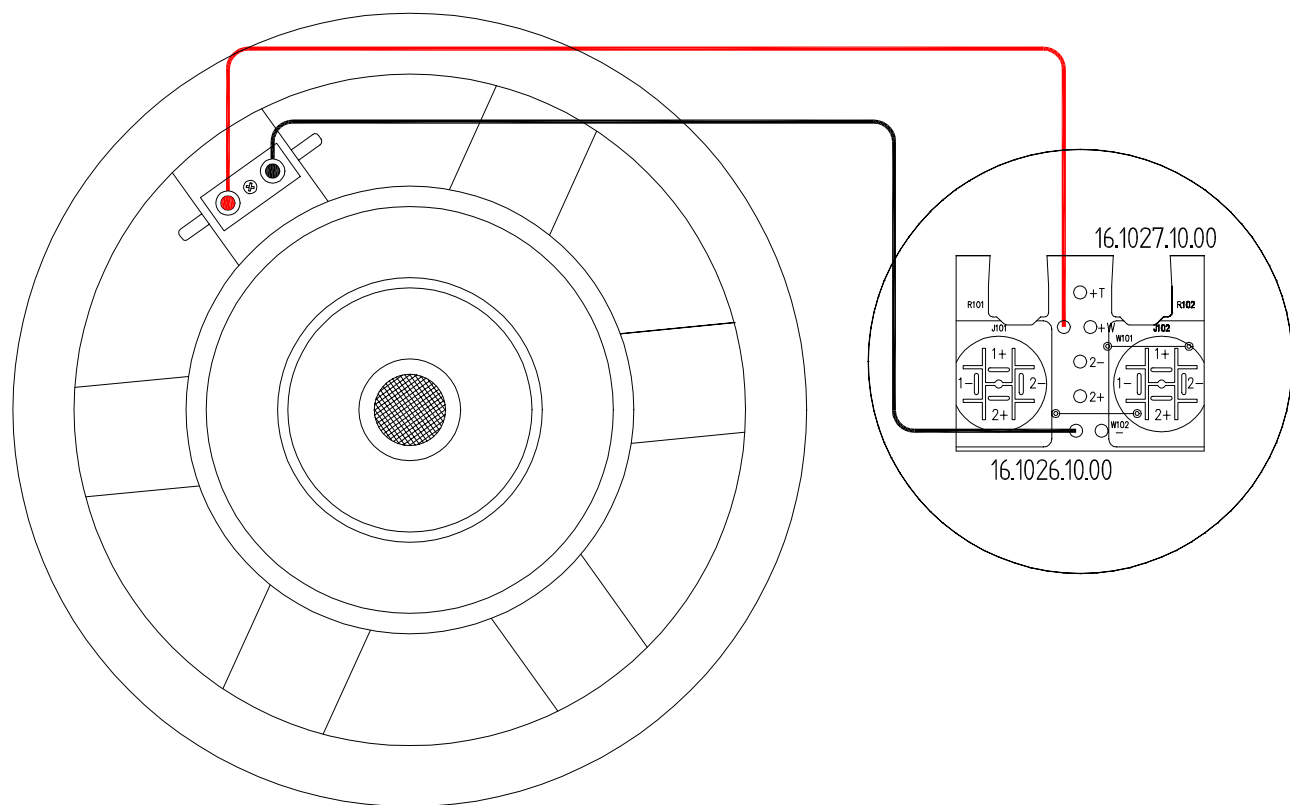






**PARTS LIST: PRINTED CIRCUIT 11.0741B**

<b>Code</b>	<b>Description</b>	<b>Reference</b>
FCCI07410000	Print board 11.0741B	
FCBASS010000	SPEAK-ON NL4MP FASTON	J101
FCBASS010000	SPEAK-ON NL4MP FASTON	J102
FC7H02600000	WIRE 16.1026.10.00	
FC7H02700000	WIRE 16.1027.10.00	



Nº	Qty.	Code	Description
1	2	FCASA3402000	CABINET METAL HANDLE
2	1	FCAV15G40000	15 INCHES BASS LOUDSPEAKER
3	2	FCBASS010000	SPEAKON SOCKET 4C
4	150	FCBURC010000	STICKER FOAM STRIP (units in cm)
5	1	FCCJMCKL2920	CKL SM115T WOOD CABINET
6	6	FCCREMS01500	FLYING TRACK 5u
7	1	FCGOES230000	PROTECTION FOAM CKL SERIES
8	1	FCGOESAWA000	SPEAK-ON PLATE RUBBER SEALANT
9	1	FCLXCKL00000	CKL LOGO STICKER
10	24	FCT060453000	SCREW D RA81 4,5x30B
11	4	FCT070351700	SCREW DIN RA83 3,5x17B
12	4	FCT500291300	SCREW D7982 2,9x13
13	8	FCTALL530000	SCREW DIN912 M5X30
14	41	FCTALL635000	SCREW DIN7991 M6x35 ALLEN
15	1	FP0274010000	SPEAK-ON CONNECTION PANEL
16	1	FP0281300000	FRONTAL GRILLE
17	1	FP0284500000	SPEAK-ON SUPPORT PLATE

Tighten all the M5 screws that hold the 15" loudspeaker with a force of 7 Nm and fix them with LOCTITE 243

