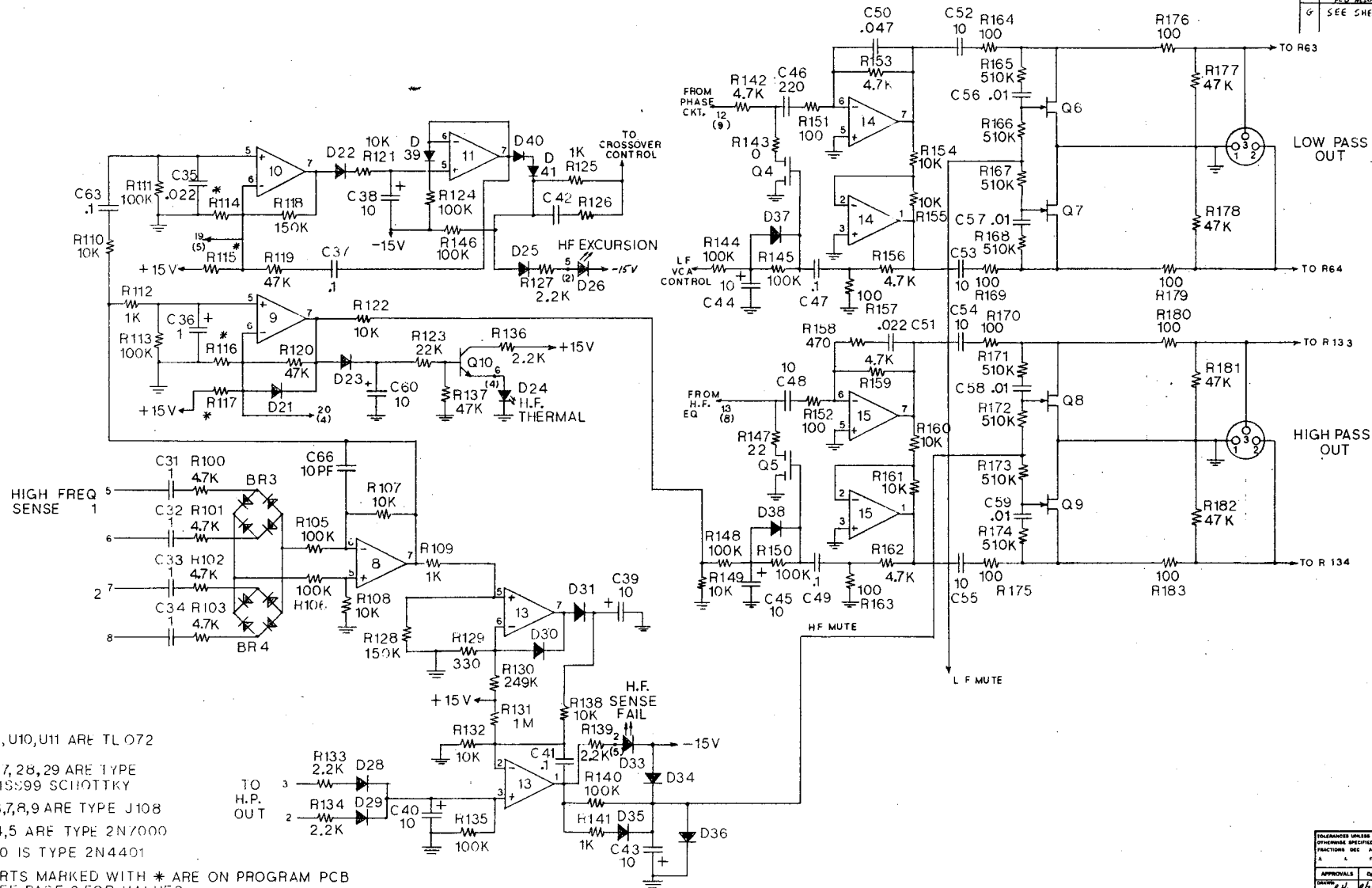




REVISIONS			
LTR	DESCRIPTION	DATE	APPROVED
A	PRODUCTION RELEASE	2/11/88	
B	SEE SHEET 3	2/13/88	
C	SEE SHEET 3	4/14/87	
D	ECO 171: SAME INPUT VALUE CHANGE	6/1/88	
E	RETURN JENSEN FAIL OUT. ECO 209	2/12/87	
F	REPAIR ALSO. ADJUSTED TO PER F.		
G	SEE SHEET 1	4/10/87	



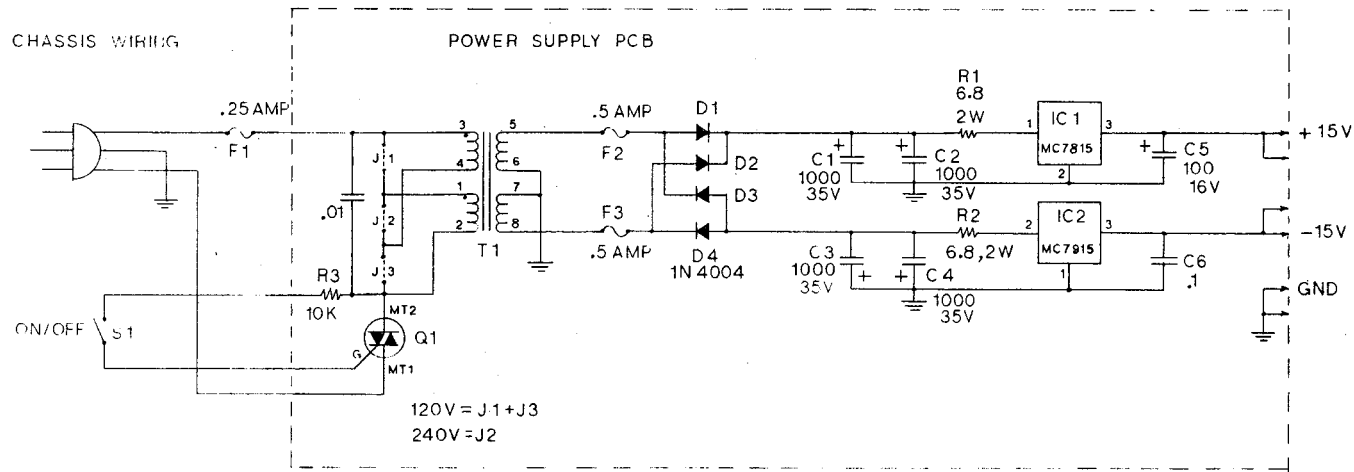
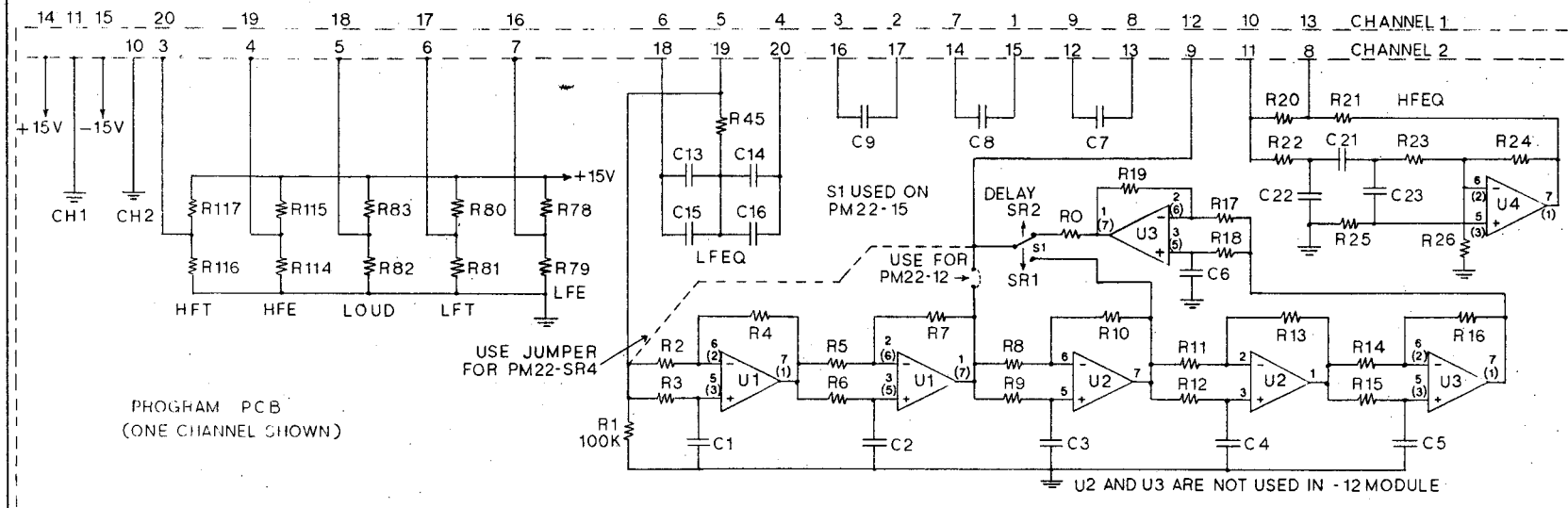
TOLERANCES UNLESS OTHERWISE SPECIFIED		RENKUS-HEINZ	
FUNCTIONS AND PANELS		SCHEMATIC	
APPROVALS		X22 PROCESSOR	
DATE	DATE	SCALE	SIZE
6/1/87	6/1/87		D
CHECKED		DO NOT SCALE DRAWING	SHEET 2

REVISIONS			
LTN	DESCRIPTION	DATE	APPROVED
<b>PRODUCTION RELEASE</b>			
A	ECO 158 + 159 NUMEROUS VALUE CHANGES	2/1/88	R.H.
B	DEFINING ERROR: 470P WAS 407P, R28 WAS 15K	2/1/88	R.H.
C	R28 WAS 2K 40-12-15 R29 WAS 15K 40-15 ECO 171	4/16/88	R.H.
D	ECO 171 SEE PM22-12	4/16/88	R.H.
E	ASSEMB -120 + -156 MODULES SEE ECO 219 + 220	2/5/89	R.H.
F	ECO 209 (K1-2) 15V TO 15V R28	2/19/89	
G	SEE SHEET 1	4/20/92	F12

PM22				
COMPONENT	-12	-15	-12D	-156
R78	47K	47K	47K	47K
R79	2.32K	2.74K	2.32K	2.74K
R80	150K	150K	150K	150K
R81	1.47K	2.21K	1.47K	2.21K
R82	1K	1K	1K	1K
R83	150K	150K	150K	150K
R114	1.5K	1.5K	1.5K	1.5K
R115	100K	100K	100K	100K
R116	4.75K	4.75K	4.75K	4.75K
R117	68K	56K	56K	56K
C13,C14	.1	.1	.1	.1
C15,C16	—	.022	—	.022
C7,C8,C9	.0022	.0033	.0033	.0033
R22	6.8K	4.75K	4.75K	4.75K
R23	6.8K	10K	10K	10K
R24	6.8K	6.8K	6.81K	12.1K
R25	15K	47.5K	10K	18.2K
R26	2.21K	22.1K	22.1K	22.1K
C21	.0022	.0033	.0022	.0022
C22	.0033	—	.001	.001
C23	.001	470P	.001	.001
R2 THRU R7	12K	18K	12.1K	15K
C1,C2	.0022	.0033	.001	.0022
C3 THRU C6	—	.0033	.0022	.0022
R8 THRU R19	—	18K	10K	18.1K
R0	—	2.3K	0	0
R20,R21	10K	10K	10K	10K
R45	6.8K	6.8K	6.81K	6.81K
S1	NOT USED	USED	NOT USED	*

TOLERANCES UNLESS OTHERWISE SPECIFIED: RESISTORS: 1% CAPACITORS: 5%		RENKUS-HEINZ	
APPROVALS		SCHEMATIC	
DRAWN: 2/1/87		X 22 PROCESSOR	
CHECKED:		SCALE: D	
DATE: 2/1/87		DO NOT SCALE DRAWING	
SHEET 3		SHEET 3	

\* FOR PM22-156 S1 IS REPLACED BY A JUMPER CONNECTING R0 TO THE OUTPUT.



# PM-22 COMPONENT VALUES FOR SR-4

Part	Value
R78	47.5K
R79	2.32K
R80	150K
R81	2.74K
R82	15.0K
R83	150K
R114	4.02K
R115	100K
R116	4.75K
R117	56.1K
C13, C14	0.1uF
C15, C16	not used
C7...C9	.0022uF
R22	4.75K
R23	10.0K
R24	6.81K
R25	47.5K
R26	22.1K
C21	.0033uF
C22	not used
C23	470pF
R2...R7	not used
C1, C2	not used
C3...C6	not used
R8...R19	not used
R0	not used
R20	5.11K
R21	3.92K
R45	6.81K
S1	not used

## Special Instructions:

Add a wire from the [intersection of R1 (100K), R2 (unused) and R3 (unused)] to the wiper of switch S1 (unused). See schematic page 3.

NOTE: SHEETS 1 THRU 3 ARE SIZE D.

.Title RENKUS-HEINZ		
Size A	Number SCHEMATIC X22 PROCESSOR	Rev G
Date 4/8/92	Drawn by	
Filename X22PMSR4.S01	Sheet 4 of 4	