

6

5

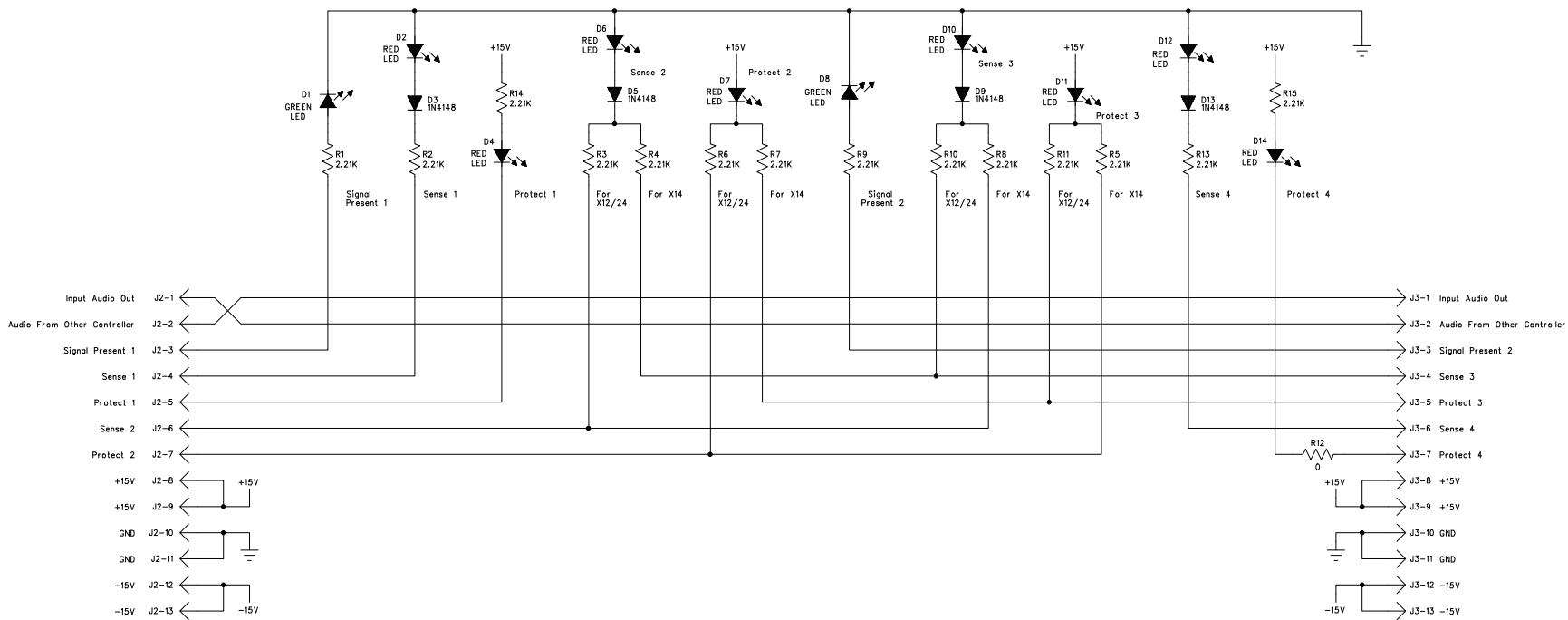
4

3

2

1

REVISION RECORD			
REV	DESCRIPTION	DATE	BY
B	PRODUCTION RELEASE. REF: ECO-822.	05/15/96	T.F.



COMPANY:			
RENKUS-HEINZ			
TITLE:			
SCHEMATIC, X12/14/24 DISPLAY			
SIZE:	DRAWING NO:		REV:
C	700-PCA236 & 700-PCA237		B
FILE:	D00299-B.SCH	SH 1	OF 1

DRAWN:	DATED:
JOHN OLSHEFSKI	
CHECKED:	DATED:
QUALITY CONTROL:	DATED:
RELEASED:	DATED:

6

5

4

3

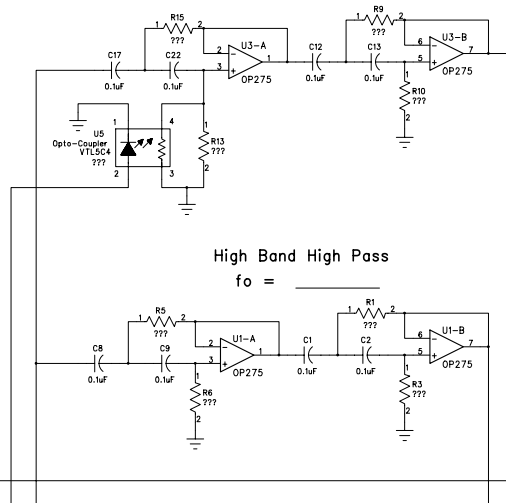
2

1

REVISION RECORD			
REV	DESCRIPTION	DATE	BY
A			
B	PRODUCTION RELEASE. REF. ECO-819.	04/29/96	J.O.

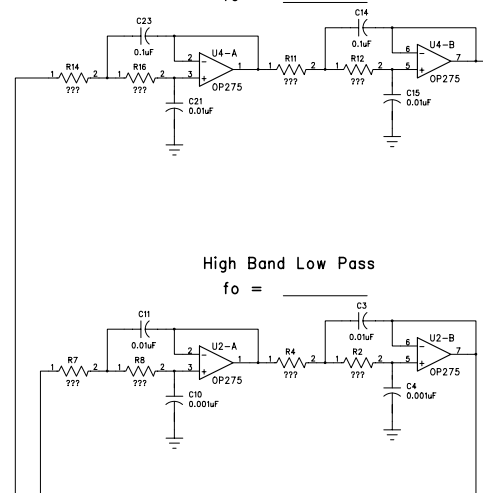
Low Band High Pass

$$f_o = \frac{1}{2\pi RC}$$



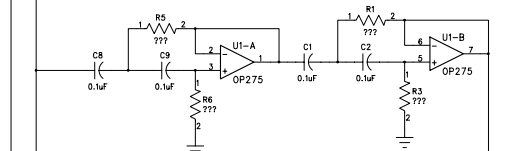
Low Band Low Pass

$$f_o = \frac{1}{2\pi RC}$$



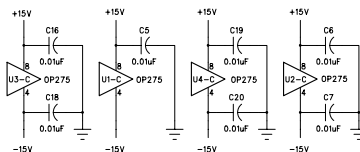
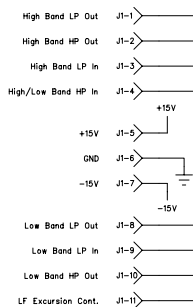
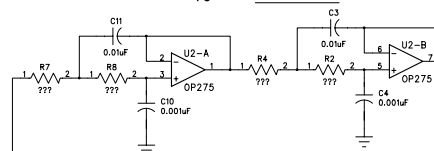
High Band High Pass

$$f_o = \frac{1}{2\pi RC}$$



High Band Low Pass

$$f_o = \frac{1}{2\pi RC}$$



COMPANY: RENKUS-HEINZ			
TITLE: SCHEMATIC, MASTER, X12/14/24 CROSSOVER			
DRAWN: JOHN OLSHEFSKI	DATED: 4-15-96	CODE:	SIZE: C
CHECKED:	DATED:	DRAWING NO: 722-PCB0057	REV: B
QUALITY CONTROL:	DATED:		
RELEASED: JOHN OLSHEFSKI	DATED: 4-29-96	FILE: D00288-B.SCH	SH 1 OF 1

6

5

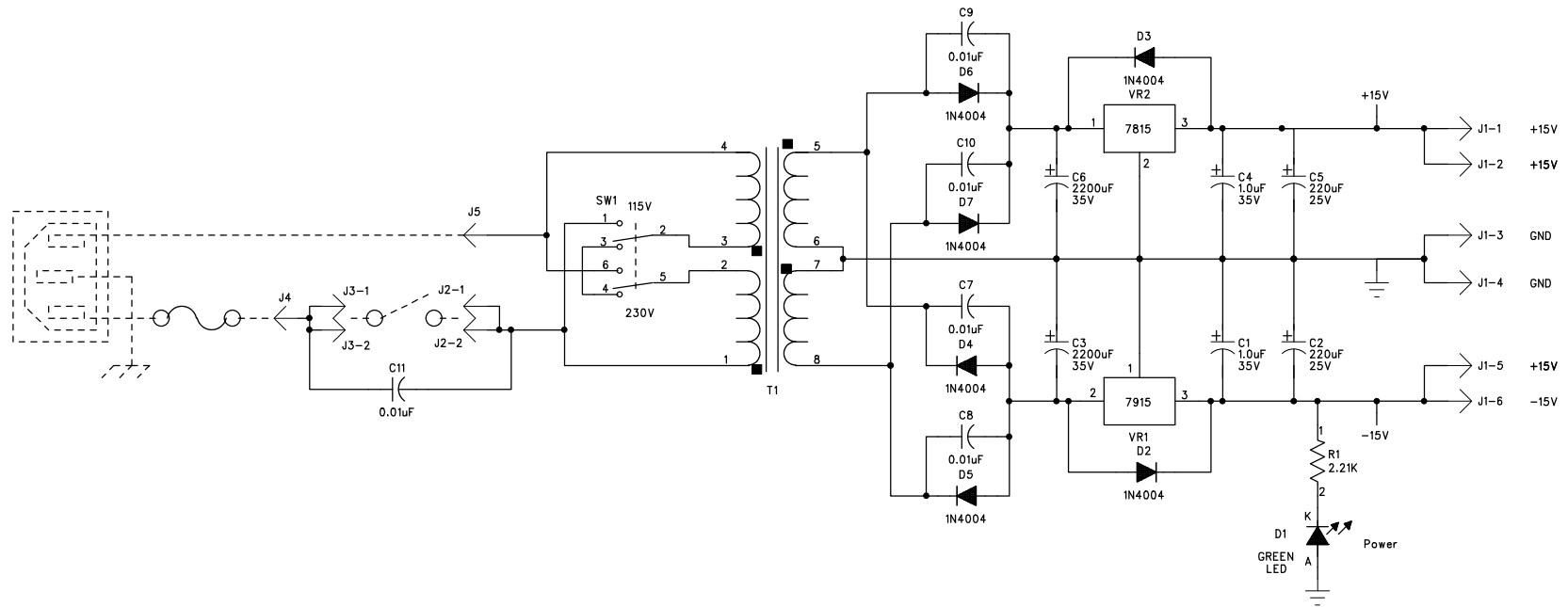
4

3

2

1

REVISION RECORD			
REV	DESCRIPTION	DATE	BY
A			
B	PRODUCTION RELEASE. REF. ECO-822.	05/14/96	T.F.
C	SEE ECO 2450 FOR CHANGES	7/2/98	G.L.



COMPANY:		RENKUS-HEINZ		
TITLE:		SCHEMATIC, X12/14/24, POWER SUPPLY BOARD		
DRAWN:	DATED:	CODE:	SIZE:	DRAWING NO:
JOHN OLSHEFSKI	4/96		B	700-PCA233
CHECKED:	DATED:			REV:
				C
Q.C.:	DATED:			
RELEASED:	DATED:	FILE:	D00296-C.SCH	
			SH 1 OF 1	

