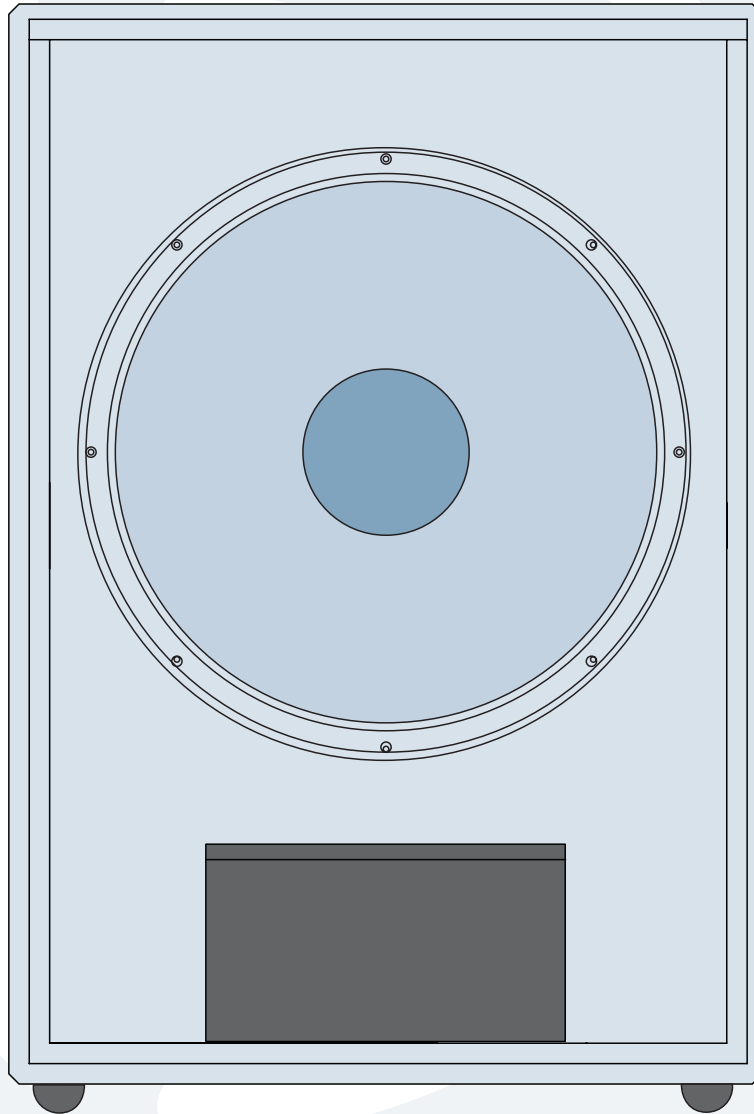




S218s REPAIR MANUAL





These instructions are intended to help restore any ailing S218s Passive Subwoofer back to factory working conditions. They show how to remove and replace the 18" woofer.

Please contact Mackie Technical Support (1-800-898-3211) to receive a Service Request Number and Order Number for the woofer.

Tools needed:

- Phillips head screwdriver.
- 4mm allen wrench.
- Solid workbench.

Parts needed:

- 18" Woofer Part #0010141 pages 3-5

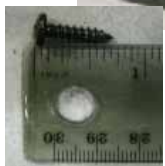


Safety Warnings:

- Make sure that you disconnect all cords before you begin these procedures.
- Always use safety glasses!
- Take care to read and follow these instructions. It may help to read the instructions prior to the repair to get an idea of what it entails.



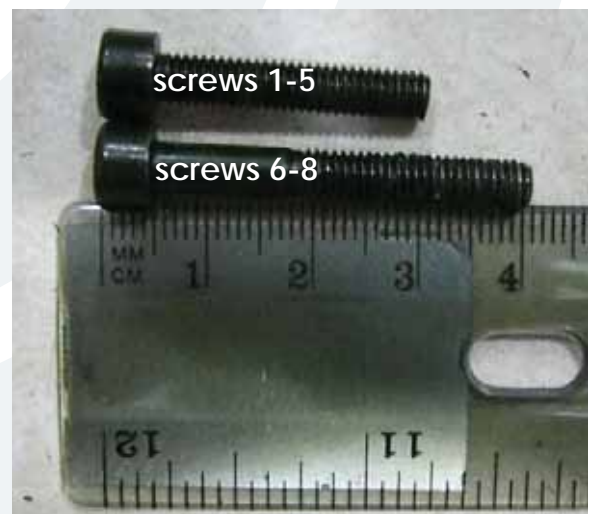
Woofer replacement:



- 1** Twenty screws need to be removed from the front of the grill using the phillips head screwdriver. Keep the twenty screws in a safe place.



- 2** Eight screws need to be removed from the woofer using the 4mm allen wrench.

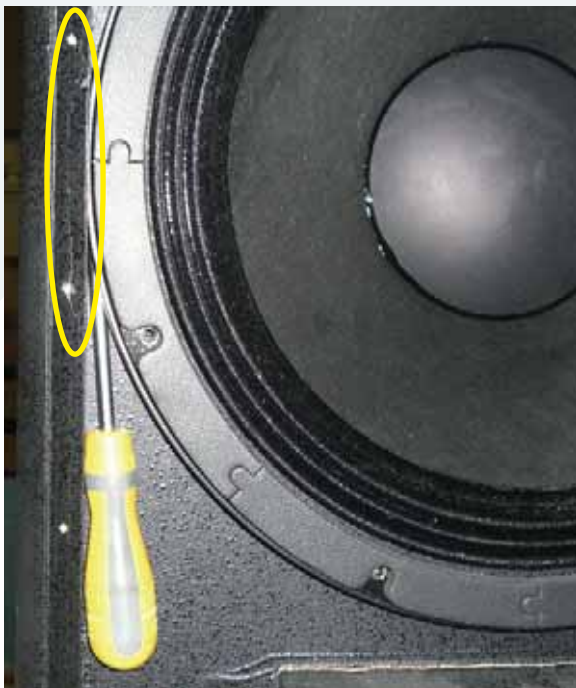


- 3** Keep the eight screws in a safe place. Note: There are two different screws that connect the woofer to the cabinet.

The LOUD Technologies Family of Brands



Woofer replacement continued:



- 4** This woofer has a tendency to want to “pop” out, but it is held in place on the sides and needs to be guided out with minimal force. Place a flat head screwdriver underneath one side of the woofer. A small crack may be seen on the cabinet, as circled above; it is best to wedge the screwdriver here. The wood on the cabinet should not chip or break off; it bends rather easily with a little added pressure. The woofer may then be removed. Do not rest the woofer on the grill support just below it. The support can not handle the weight of the woofer.



- 5** Carefully begin to remove the woofer. Remember, do not rest it on the grill support below.



Caution: The woofer is approximately 22 pounds with the weight unevenly distributed.



- 6** The positive (solid blue) and negative (solid black) cables are still attached to the woofer terminals. Remove the cables from their terminals simply by pushing down on the terminal and pulling out the cable.



Woofer replacement continued:

www.loudtechinc.com

7 The picture above shows what the S218s looks like with the grill and woofer removed. Place the new woofer (part #0010141) where the old one was. Follow the same steps as above, but backwards 6 to 1. Power up the S218s and the new woofer should now be pumping out glorious lows. Awesome, you just replaced an 18" woofer!



This page left blank intentionally