

RED TERMINALS ARE TOWARD
THE TOP OF THE AMPLIFIER

(ITEM 15), 2X, ARE TO BE ASSEMBLED SO THAT
THE WIRE-OUT DETENTS INDICATED ARE
FACING AWAY FROM EACH OTHER.

NOTE AIR FLOW
DIRECTION

ORIENT (ITEM 8) SO THAT
WIRES EXIT HERE

43
LUG (ITEM 3)
(ITEM 17)

PART OF (ITEM 9)
51
(-01 ONLY)

28 2X

10

29 2X
(ITEM 10)
(ITEM 17)

6

PLUG CONNECTOR, PART
OF (ITEM 10), INTO
J5 (ITEM 13)

30 8X
(ITEM 17)
(ITEM 13)

SEE DETAIL A

15 2X

30 6X
(ITEM 17)
(ITEM 16)

NOTE AIR FLOW
DIRECTION

ORIENT (ITEM 8) SO THAT
WIRES EXIT HERE

8 2X

PART OF (ITEM 15)

16

17

13

4X 46
(ITEM 11)
(ITEM 17)

DETAIL A
SCALE 2.000

D

C

B

A

D

C

B

A

8X (36)
(ITEM 26)
(ITEM 19)
(ITEM 52 OR ITEM 53)
(ITEM 41)
(ITEM 43)

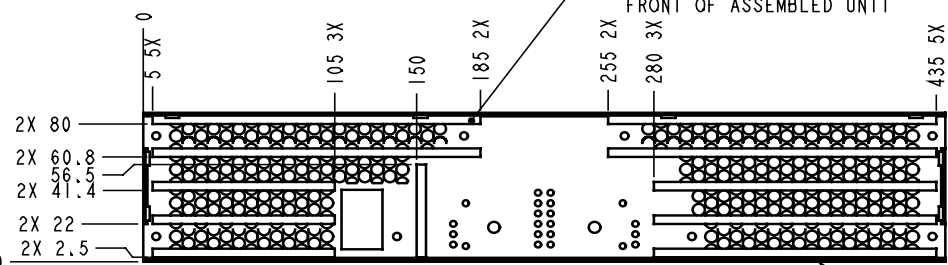
POKE SCREW THROUGH
ITEMS 52 AND ITEM
53 FOR MOUNTING

2X (44)
(ITEM 12)

(27) 4X
(ITEM 19)
(ITEM 12)

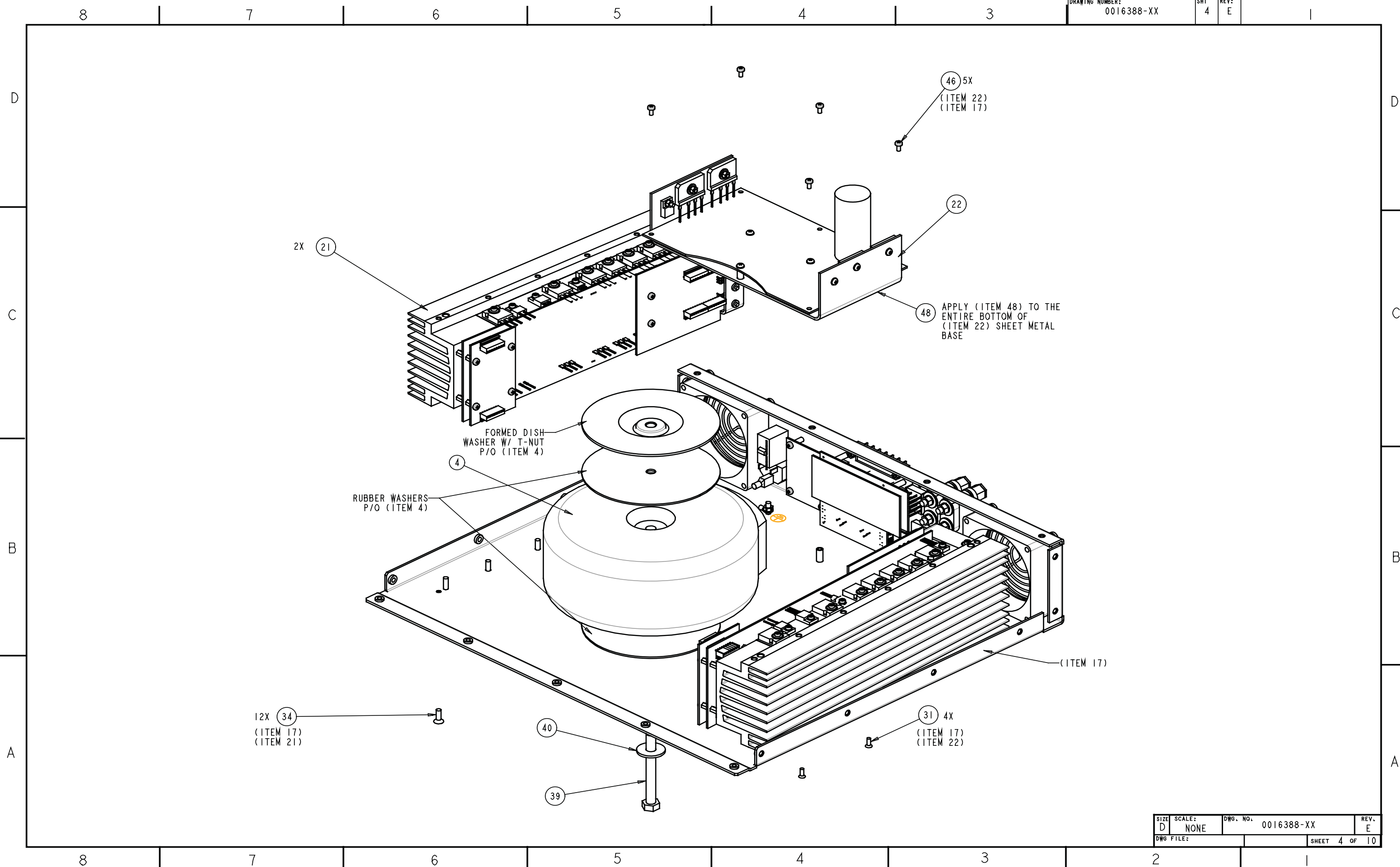
(5)

(54) 11X AS SHOWN
TAPE CANNOT BE VISIBLE THROUGH
FRONT OF ASSEMBLED UNIT



TAPE APPLICATION FOR FOAM ADHESION.
BEFORE ABOVE ASSEMBLY

(ITEM 19)



D

C

B

A

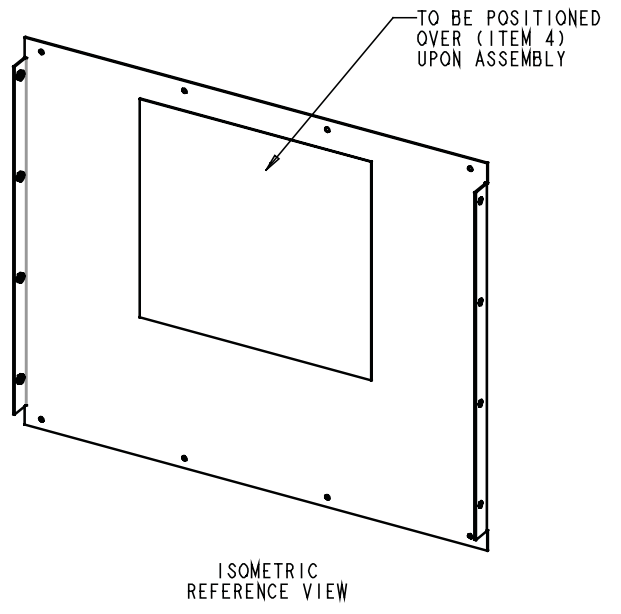
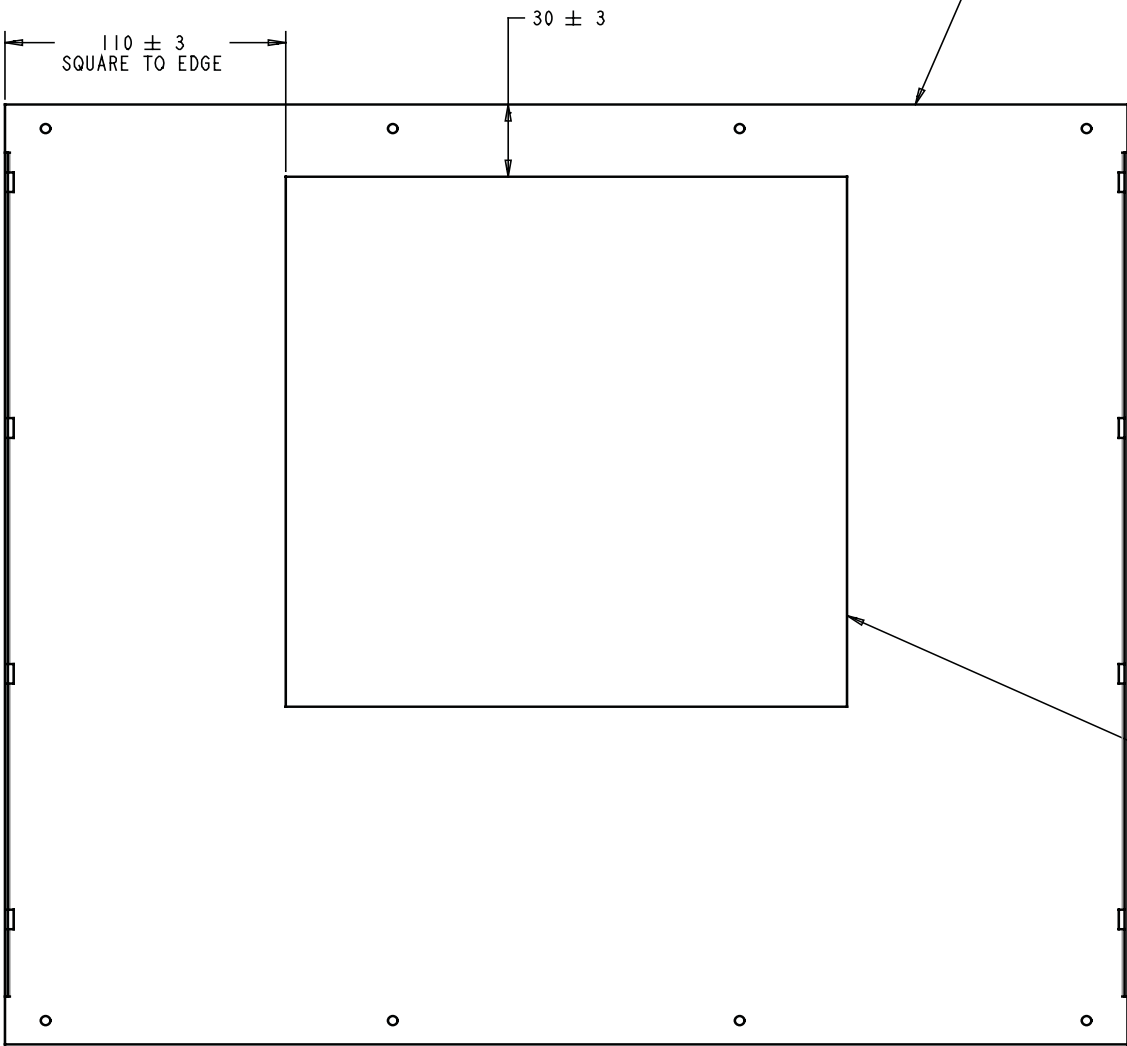
D

C

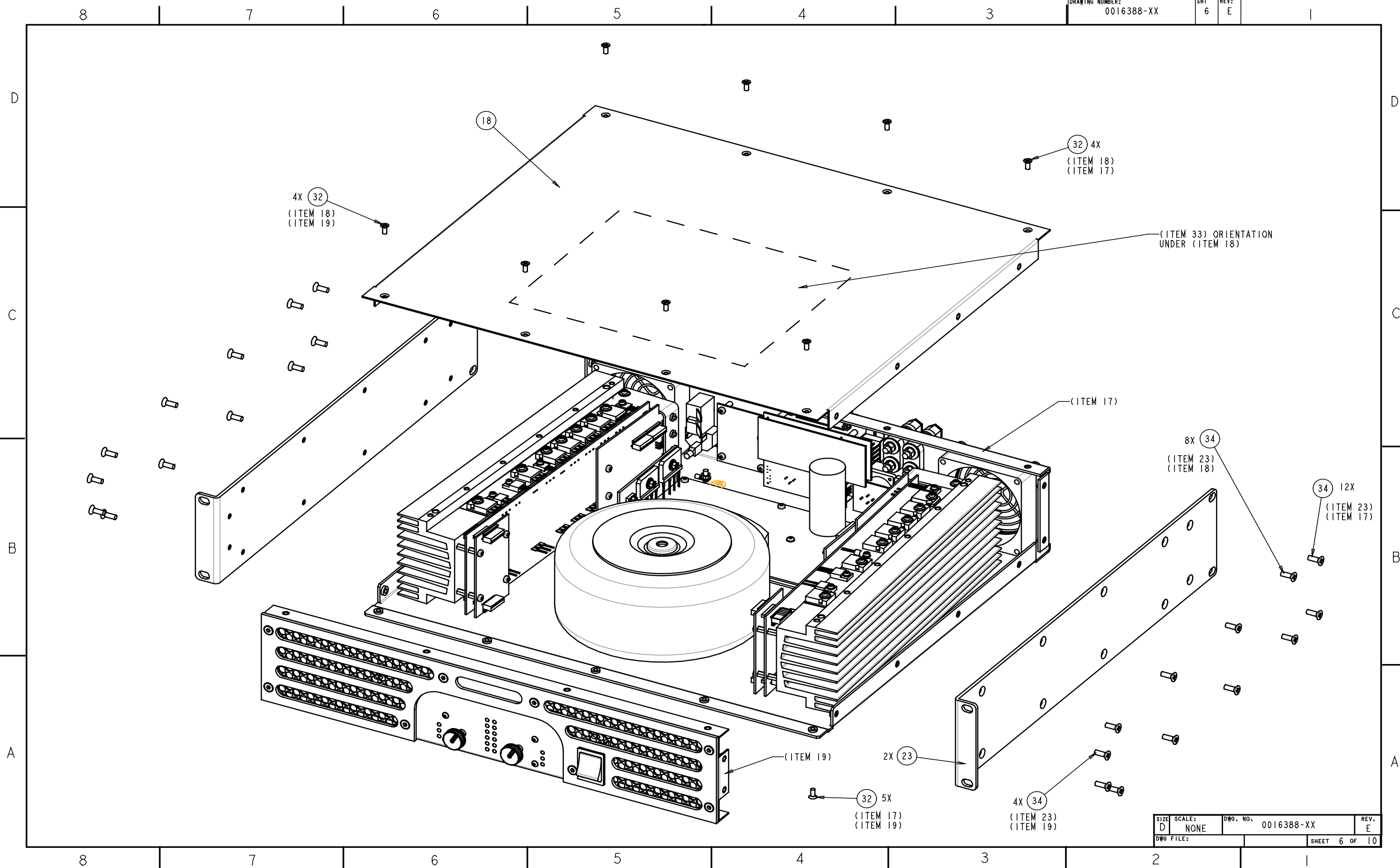
B

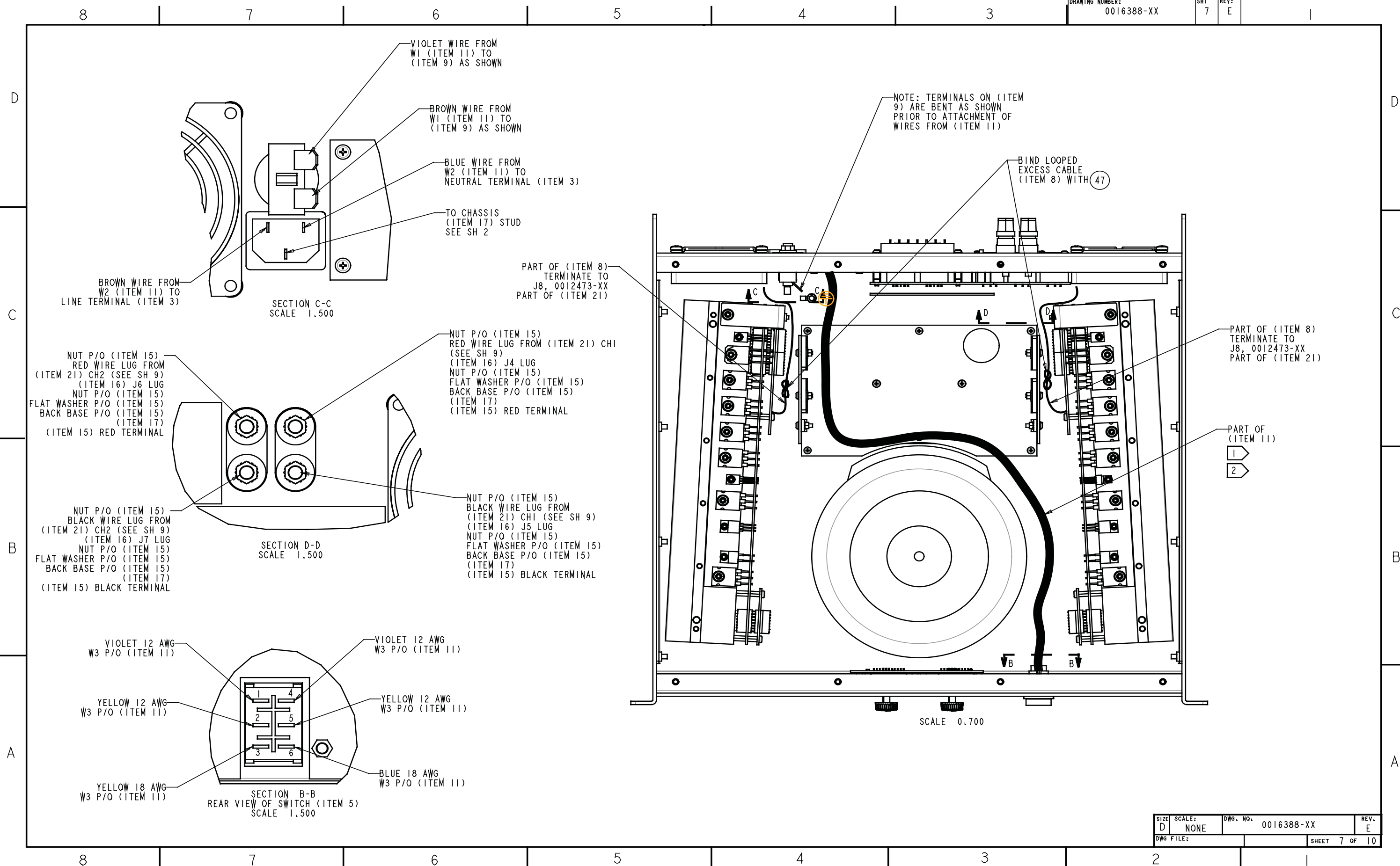
A

FRONT EDGE OF TOP (ITEM 18)



33 ATTACH (ITEM 33) TO (ITEM 18) AS SHOWN USING THE ADHESIVE BACKING P/O (ITEM 33)





8

7

6

5

4

3

DRAWING NUMBER:	SHT	REV:
0016388-XX	8	E

1

D

D

C

C

B

B

A

A

① ②
BETWEEN (ITEM 13) J2
AND J17, 0012467-XX
PART OF (ITEM 21)

②
BETWEEN (ITEM 13) J1
AND J17, 0012467-XX
PART OF (ITEM 21)

① ①
BETWEEN (ITEM 12) J4
AND (ITEM 13) J4

①
BETWEEN (ITEM 12) J1
AND (ITEM 13) J3

SIZE	SCALE:	DWG. NO.	REV.
D	NONE	0016388-XX	E
DWG FILE:	SHEET 8 OF 10		

8

7

6

5

4

3

2

1

8

7

6

5

4

3

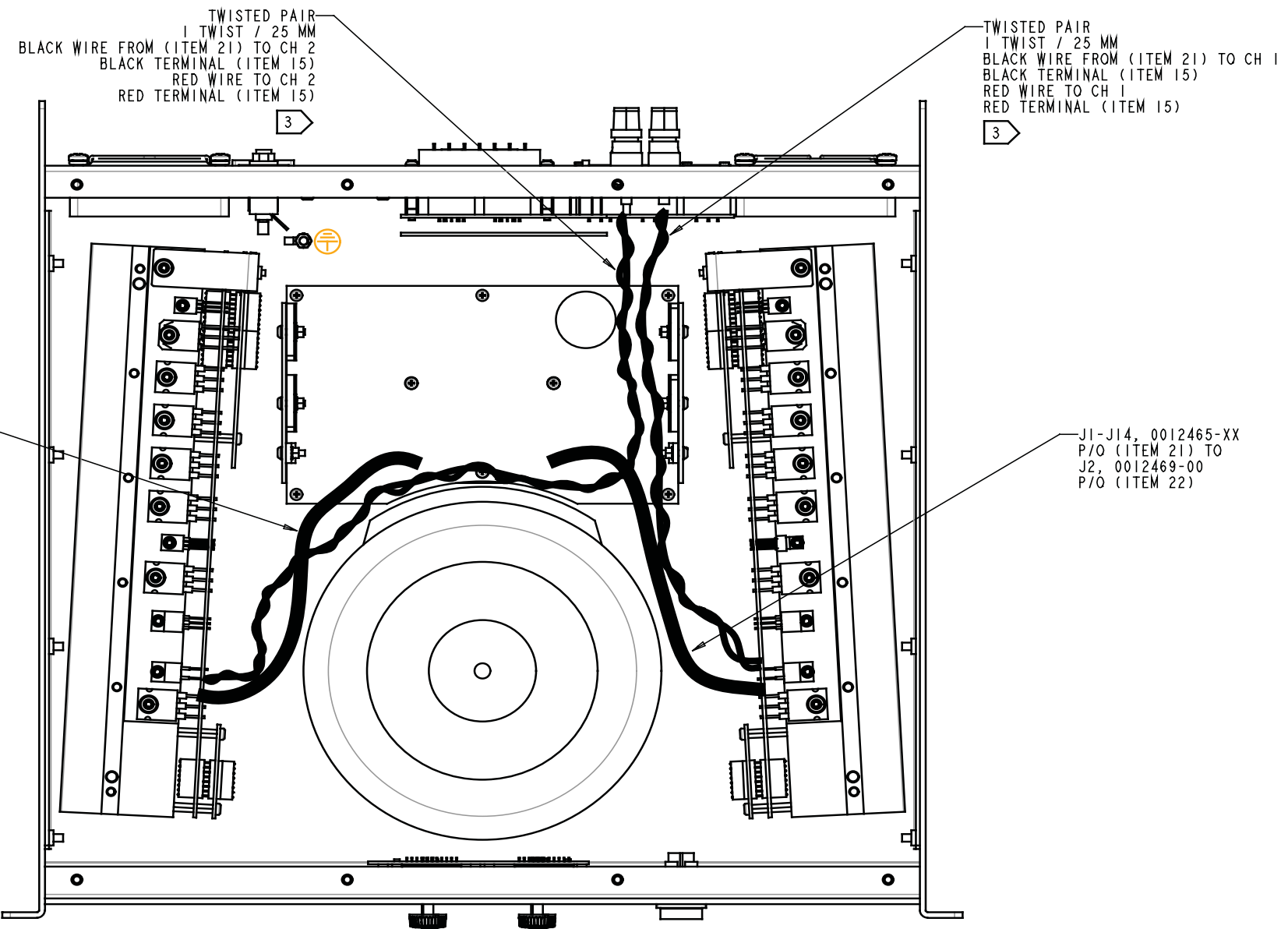
DRAWING NUMBER:	0016388-XX	SHT	9	REV:	E
-----------------	------------	-----	---	------	---

D

C

B

A



D

C

B

A

SIZE	SCALE:	DWG. NO.	REV.
D	NONE	0016388-XX	E
DWG FILE:	SHEET 9 OF 10		

8

7

6

5

4

3

2

1

8

7

6

5

4

3

DRAWING NUMBER:	SHT	REV:
0016388-XX	10	E

1

D

D

C

C

B

B

A

A

BLACK PRIMARY (ITEM 4) TO
J2 (ITEM 11)
AND
WHITE OR YELLOW PRIMARY
TO J1 (ITEM 11)

1
2

1 50

MAIN SECONDARY-1 (ITEM 4)
TO J1, 0012469-01 P/O (ITEM 22)

3

2 50

MAIN SECONDARY-2 (ITEM 4)
TO J5, 0012469-01 P/O (ITEM 22)

2

50 3

12V SECONDARY (ITEM 4)
TO J4, 0012469-01
P/O (ITEM 22)

(ITEM 4)

SIZE	SCALE:	DWG. NO.	REV.
D	NONE	0016388-XX	E
DWG FILE:	SHEET 10 OF 10		

8

7

6

5

4

3

2

1