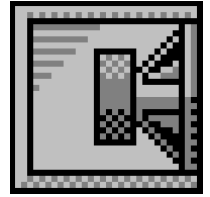


Custom Vented Box Design

By Poweraudio SRL, SC PowerAudio SRL



Box Properties

--Description--

Name:

Type: Vented Box

Shape: Prism, square

--Box Parameters--

Vb = 110.1 liters

Fb = 50.25 Hz

F3 = 113.9 Hz

Fill = minimal

--Vents--

No. of Vents = 4

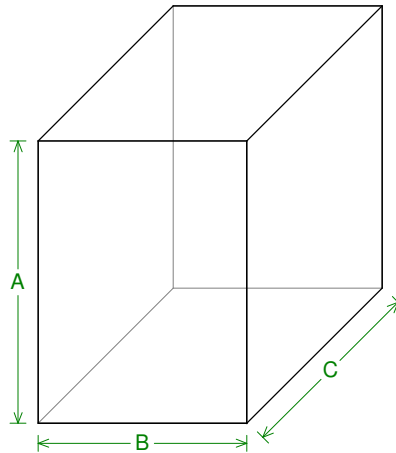
Vent shape = rectangle

Vent ends = one flush

Hv = 128 mm

Wv = 60 mm

Lv = 250 mm



--External Dimensions--

A = 616 mm

B = 456 mm

C = 556 mm

--Internal Dimensions--

A = 580 mm

B = 420 mm

C = 480 mm

--Wall Thickness--

Front = 58 mm

Side = 18 mm

Driver Properties

--Description--

Name:

Type: Standard one-way driver

--Configuration--

No. of Drivers = 1

--Driver Parameters--

Fs = 38 Hz

Qms = 8.75

Vas = 105 liters

Xmax = 9 mm

Sd = 829 sq.cm

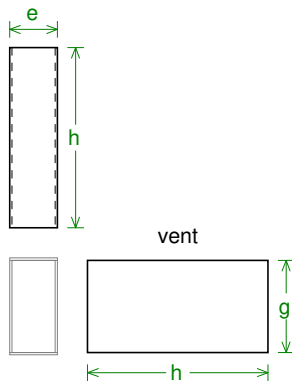
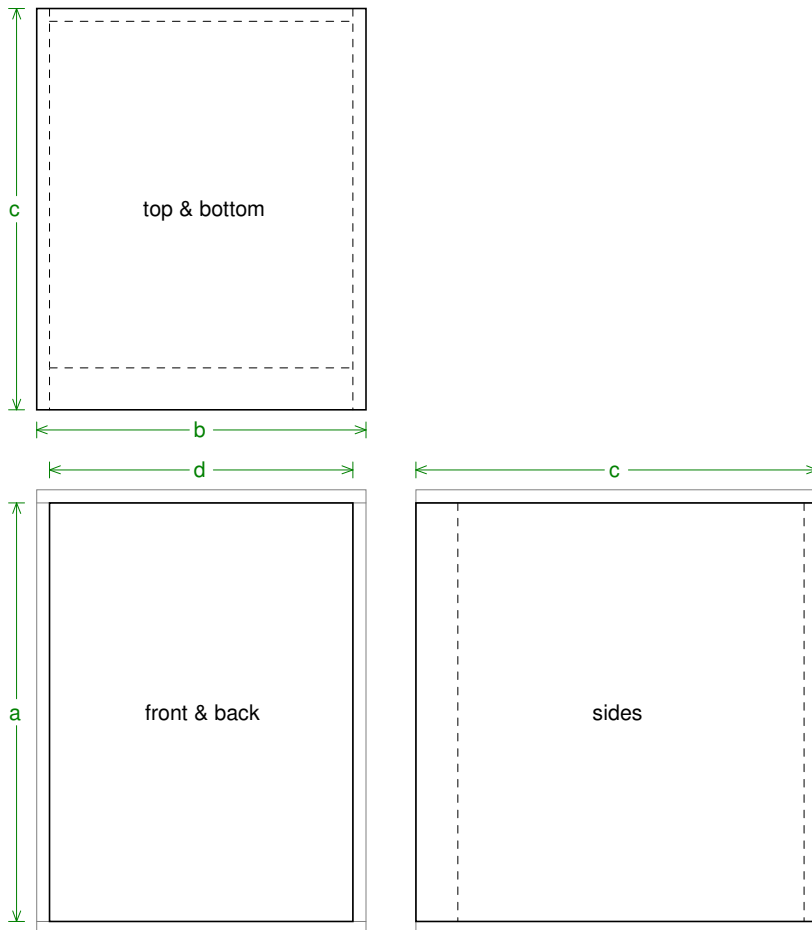
Qes = 0.293

Re = 5.23 ohms

Le = 1.98 mH

Z = 8 ohms

Pe = 1000 watts



Box Parts

--Square Prism Box Parts--

- 1 Top, 1 Bottom: depth (c) = 556 mm
width (b) = 456, thickness = 18 mm
- 1 Front: height (a) = 580 mm
width (d) = 420, thickness = 58 mm
- 1 Back: height (a) = 580 mm
width (d) = 420, thickness = 18 mm
- 2 Sides: height (a) = 580 mm
depth (c) = 556, thickness = 18 mm

--Vent Parts--

- 4 Tops, 4 Bottoms:
width (e) = 66.35, length (h) = 250 mm
thickness = 3.175 mm
- 8 Sides:
height (g) = 128, length (h) = 250 mm
thickness = 3.175 mm

--Driver Mounting-- Mounting:



Wiring Diagram

