

©THIS DRAWING IS THE EXCLUSIVE PROPERTY OF
ROBERT BOSCH GMBH. WITHOUT THEIR CONSENT IT MAY
NOT BE REPRODUCED OR GIVEN TO THIRD PARTIES.

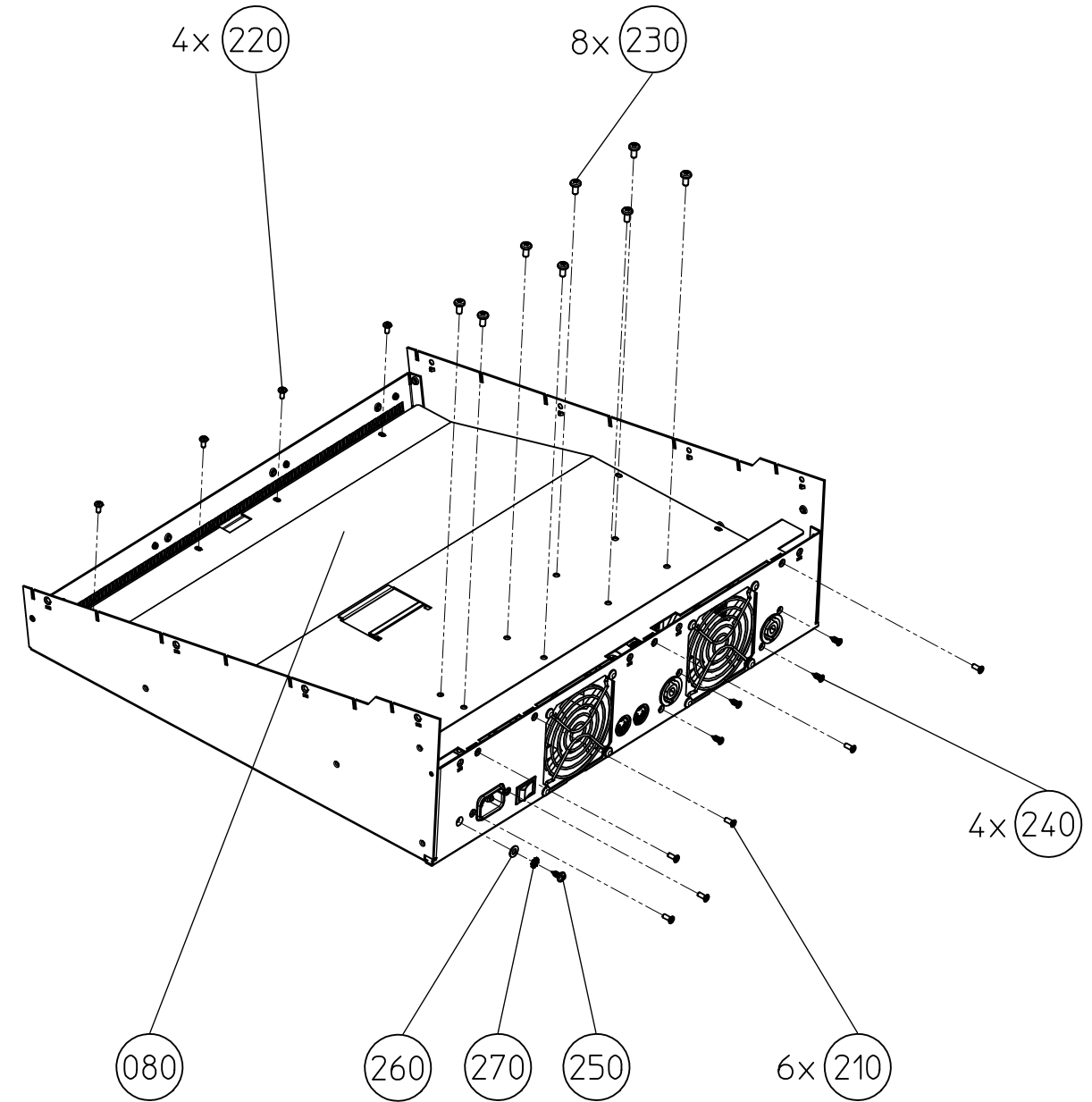
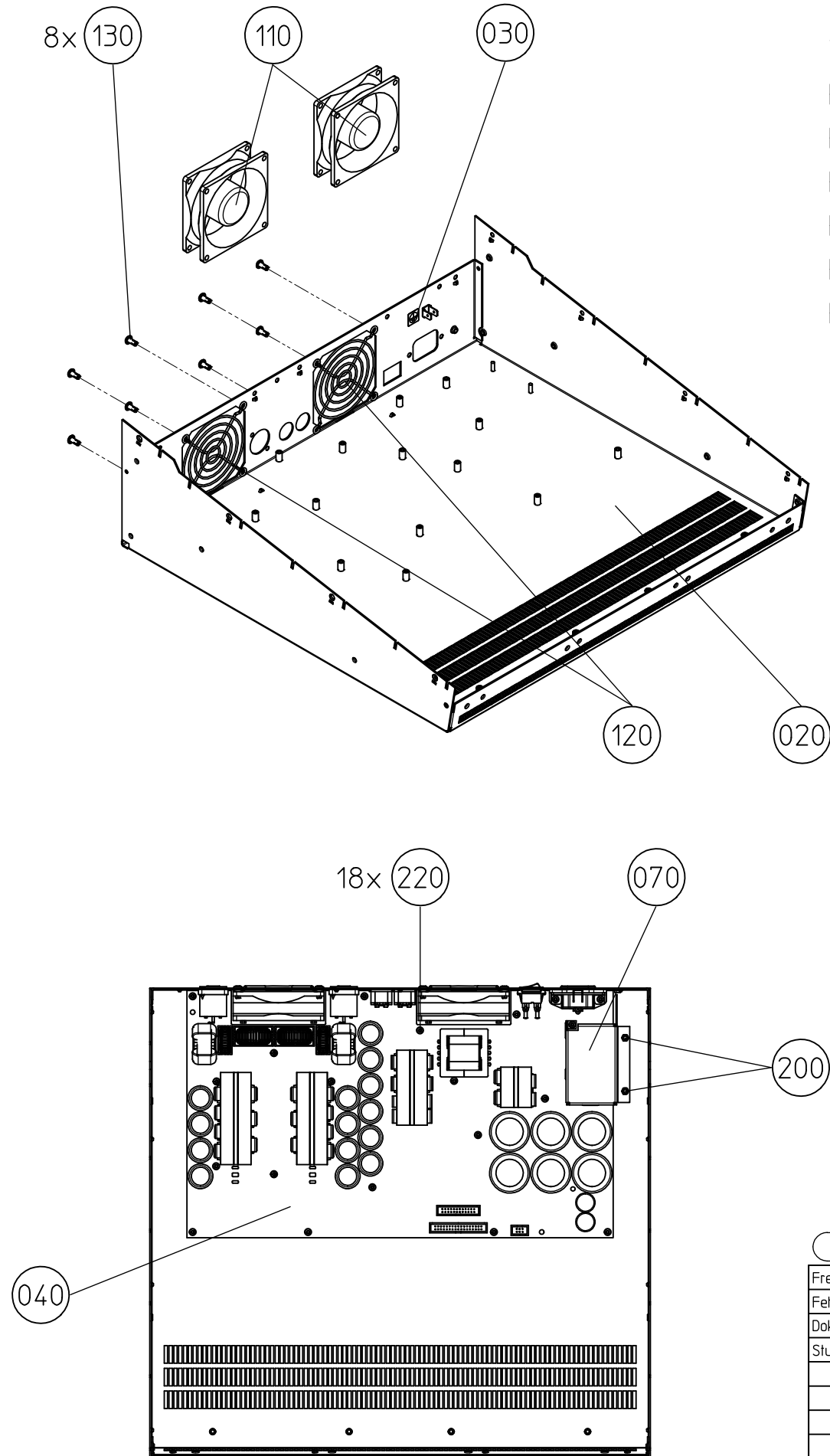
© Alle Rechte bei Robert Bosch GmbH, auch fuer den
Fall von Schutzrechtsanmeldungen. Jede Veruegungs-
befugnis, wie Kopier- und Weitergaberechti, bei uns.

Weitere frendspr. Zeichnungen
FURTHER FOREIGN LANGUAGE DWGS

F01U126824

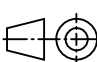


TORQUES

- Pos. 200: 0.9 ± 0.1 Nm
Pos. 210: 0.9 ± 0.1 Nm
Pos. 220: 0.9 ± 0.1 Nm
Pos. 230: 0.9 ± 0.1 Nm
Pos. 240: 0.6 ± 0.1 Nm
Pos. 250: 0.9 ± 0.1 Nm



RoHS STANDARD
ENVIRONMENTAL REQUIREMENT : NO BANNED
SUBSTANCES ACC. TO N2580-1

SPC Maß / SPC Dimension cpk > 1,67

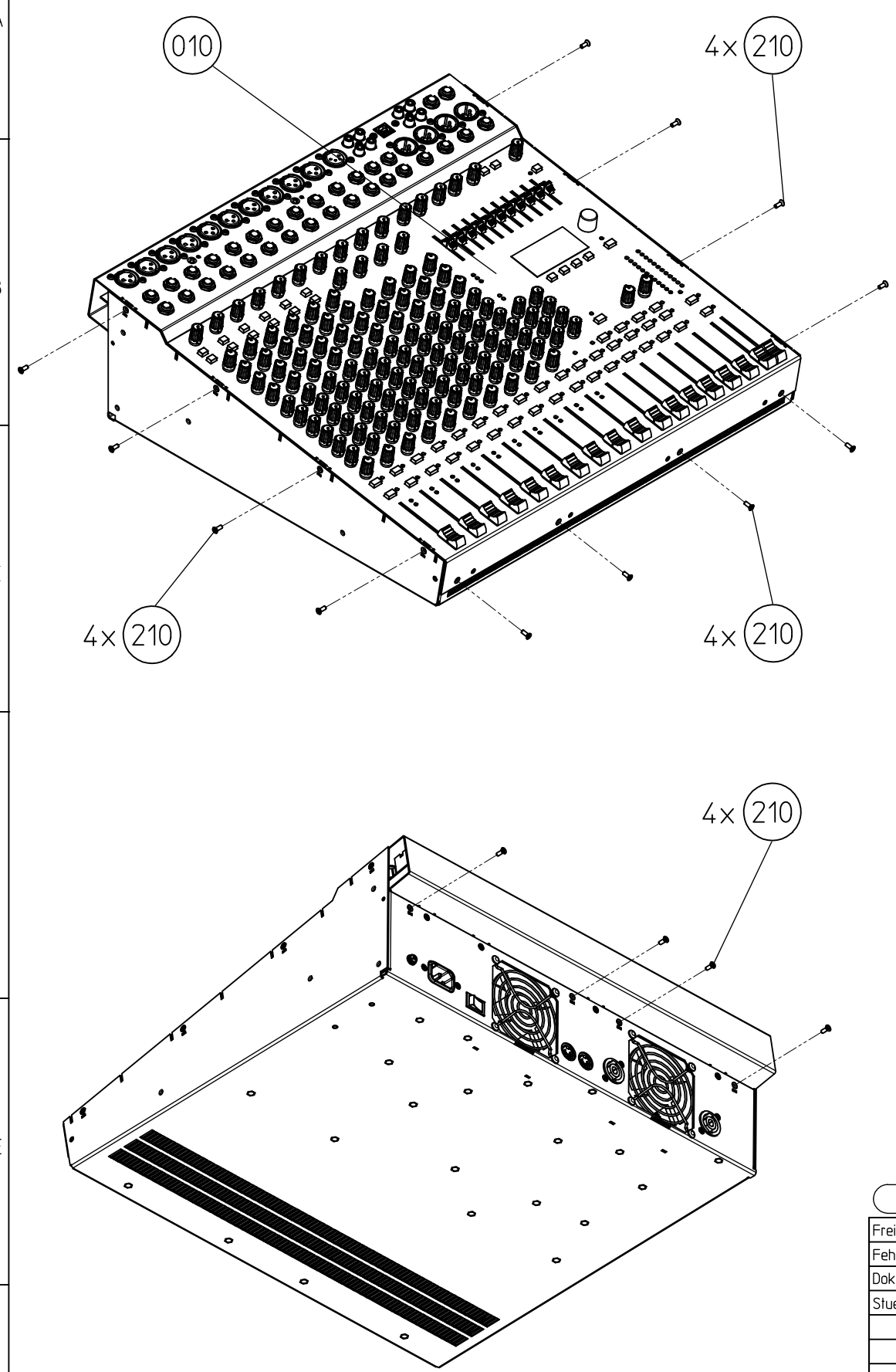
Freimaßtol. / TOLERANCES					Oberflaeche SURFACE				Massstab SCALE 1:5		Gewicht WEIGHT	
Fehl. Angaben / MISS. DETAILS									Stoff/ MAT'L			
Dokumentenart / DOCUMENT TYPE												
Stueckliste besonderes Blatt / PARTS LIST ON SEPARATE SHEET									aus/ FROM			
					Gr.St. VOLUME		Datum/DATE	Name/NAME	Benennung/ TITLE ASSEMBLY INSTRUCTION PowerMate 1000-III			
						gez/DWN	09.07.10	W. Winand				
						gep/CHK						
						ges/APP						
						Original:						
					DIN A3	 BOSCH Security Systems			Nr./ NO. DRW - F01U126824		de/en	Blatt SHEET 1
01	700000023795	wiW	29.07.10									
Nr NO	Aenderung CHANGE	gez. DWN.	gueltig VALID	gepr CHK.		Ers.f. / REPLACES			Ers.d. / REPLACBY			

©THIS DRAWING IS THE EXCLUSIVE PROPERTY OF ROBERT BOSCH GMBH. WITHOUT THEIR CONSENT IT MAY NOT BE REPRODUCED OR GIVEN TO THIRD PARTIES.

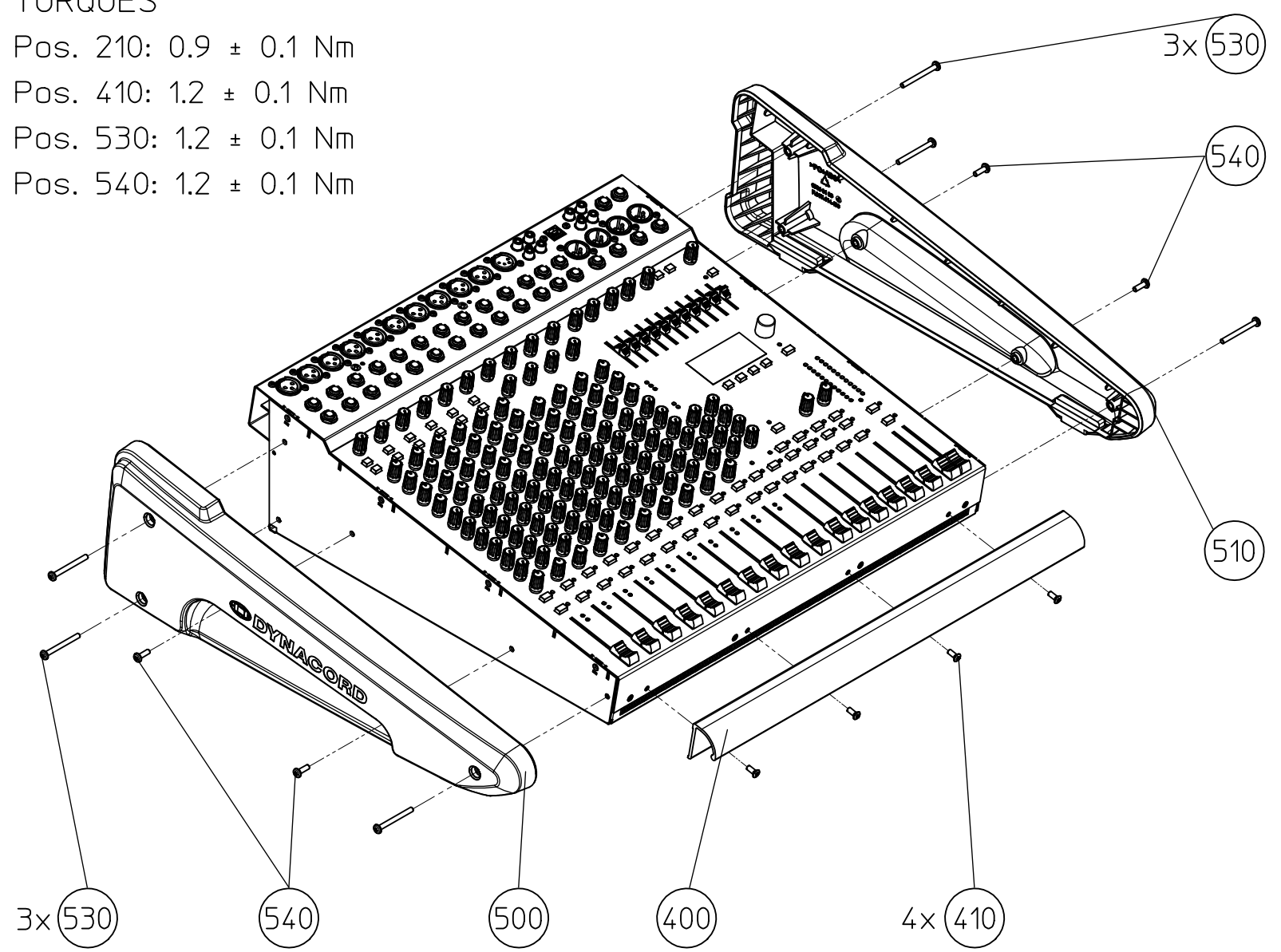
© Alle Rechte bei Robert Bosch GmbH, auch fuer den Fall von Schutzrechtsmeldungen. Jede Veruegungs-befugnis, wie Kopier- und Weitergaberechti, bei uns.

Weitere frendspr. Zeichnungen
FURTHER FOREIGN LANGUAGE DWGS

F01U126824

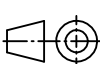



TORQUES
Pos. 210: 0.9 ± 0.1 Nm
Pos. 410: 1.2 ± 0.1 Nm
Pos. 530: 1.2 ± 0.1 Nm
Pos. 540: 1.2 ± 0.1 Nm



RoHS STANDARD
ENVIRONMENTAL REQUIREMENT : NO BANNED
SUBSTANCES ACC. TO N2580-1

SPC Maß / SPC Dimension cpk > 1,67

Freimaßtol. / TOLERANCES				Oberflaeche SURFACE					Massstab SCALE 1:5		Gewicht WEIGHT		
Fehl. Angaben / MISS. DETAILS									Stoff/ MAT'L				
Dokumentenart / DOCUMENT TYPE				aus/ FROM									
Stueckliste besonderes Blatt / PARTS LIST ON SEPARATE SHEET										Benennung/ TITLE ASSEMBLY INSTRUCTION PowerMate 1000-III			
					Gr.St.		Datum/DATE	Name/NAME					
					VOLUME	gez/DWN	09.07.10	W. Winand					
						gep/CHK							
						ges/APP							
					Original:								
					DIN A3	 BOSCH Security Systems				Nr./ NO.		de/en	Blatt SHEET 2
01	700000023795	WiW	29.07.10							DRW - F01U126824			
Nr	Aenderung	gez.	gueltig	gepr	PE	Ers.f. / REPLACES				Ers.d. / REPLAC.BY			
NO	CHANGE	DWN.	VALID	CHK.									

METRIC
DIMENSIONS IN mm
OBSERVE INSTRUCTIONS FOR FILLING OUT N2A D11/1

Item	Component number	Object description	Straubing	YSPR
0010	F.01U.108.951	FRONT PANEL PM1000-III	D369006	y
0020	F.01U.111.479	BOTTOM PM1000-III SILKSCREENED	D369002	y
0030	F.01U.099.699	LABEL silver 13mm 13mm Label ground	D307460	
0040	F.01U.114.460	PCBA AMP PM-III		
0070	F.01U.126.851	SHIELD PCB-AMP PM-III		
0080	F.01U.111.433	SHIELD PM1000	D367898	
0110	F.01U.102.735	FAN DC 24V/2.52W TYP FBA08A24H	D348415	y
0120	F.01U.073.451	FAN GUARD 80MM BLACK	D364339	y
0130	F.01U.073.452	SNAP-RIVET RICHCO SR-4090B		y
0200	F.01U.100.016	NUT hex locked St ZN M3 ISO10511	D336214	y
0210	F.01U.076.740	SCR STD csk St BL M3x8 torx DIN7500M	D363651	y
0220	F.01U.099.903	SCR STD pan St NI M3x6 torx DIN 7985	D367169	y
0230	F.01U.105.054	SCR STD pan St BL M4x8 DIN7500C	D359940	y
0240	F.01U.088.699	TAPSCR sheet rsdcsk St BL 2.9x9.5 torx	D364668	y
0260	F.01U.100.145	WASHER flat St NI 4,3x9x0,8 DIN 125 A	D300628	y
0270	F.01U.100.150	WASHER lock int St Zn 4,3x8x0,5 DIN6798A	D300599	y
0400	F.01U.114.473	ARMREST PM1000	D369110	y
0410	F.01U.106.205	SCHRGW N M4 X10-ST-TORX	D363126	y
0500	F.01U.168.189	SIDE WING LEFT PM-III - FOOT INCL.		y
0510	F.01U.168.190	SIDE WING RIGHT PM-III - FOOT INCL.		y
	F.01U.114.464	Foot PMIII		y
0530	F.01U.099.994	TAPSCR pan St Black M4x40 torx DIN7500C	D363124	y
0540	F.01U.164.507	TAPSCR pan St Black M4x12 torx DIN7500C		y
0600	F.01U.114.465	LID PM1000-III CPL.	D379108	y