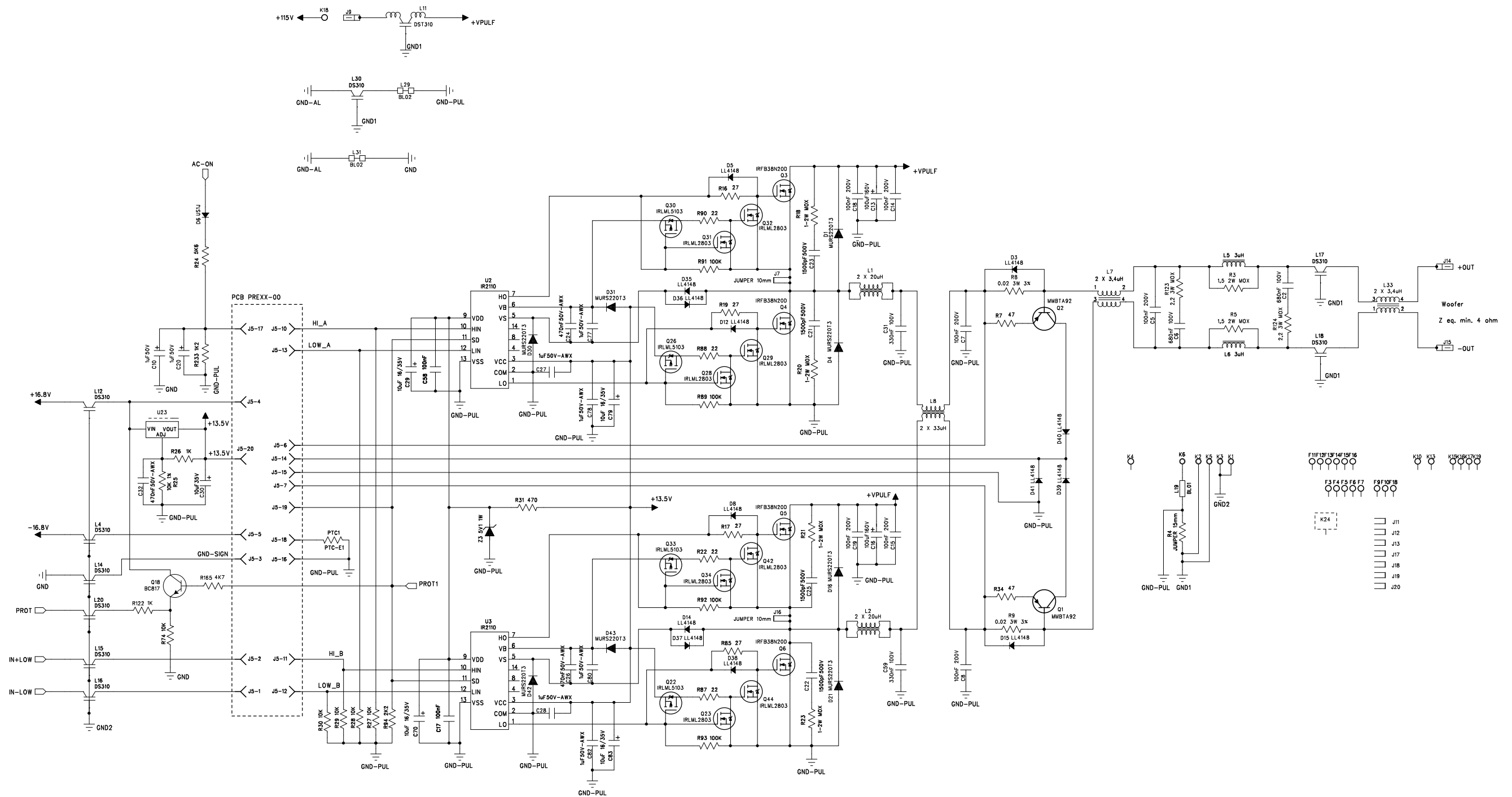
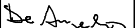

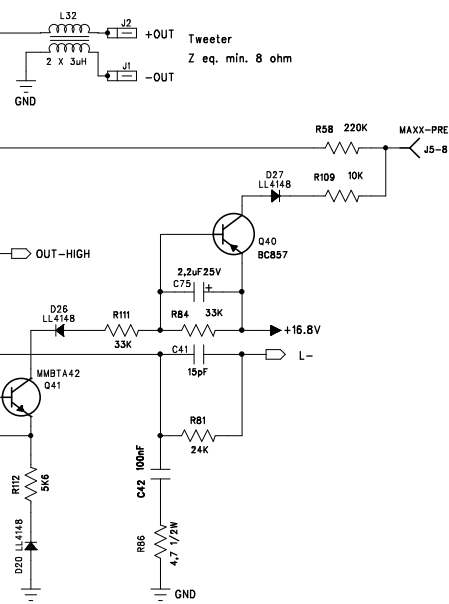



NOTA: 03/10/07 SOSTITUZIONE TRIMMER R53 DA COD.24353 A COD.01943

OGGETTO: OBJECT:	PREAMPLIFIER LF AMPLIFIER Hi MaxX 40a VERVE 152A VERVE 215A VERVE 15SA VERVE 18SA	FIRMA SIGNATURE	DATA DATE
		DISEGNATO: DESIGNED:	Monaldo De Angelis 06/03/07
		APPROVATO: APPROVED:	Piero Guardabassi 06/03/07
F.B.T. Elettronica Spa Zona ind.le Squartabue-62019 Reconati (MC) ITALIA (ITALY) P.A.E. AC QUBE tel.++39 071 750591 -fax++ 39 071 7505920 www.fbt.it		CODICE DISEGNO-DRAWING CODE S026850001-00	
		CODICE C.S.-PCB CODE 21948-00	
PROPRIETA' RISERVATA. VIETATA LA DIVULGAZIONE O LA RIPRODUZIONE TOTALE E/O PARZIALE DEL PRESENTE DISEGNO		CODICE-CODE 026850-00	
ALL RIGHTS RESERVED. UNAUTHORIZED REPRODUCTION, MODIFICATION OR DISTRIBUTION OF ANY PORTION OF THIS DOCUMENT IS FORBIDDEN		FOGLIO-SHEET 1 OF 1	



OGGETTO: OBJECT:	POWER UNIT L.F. HI MaxX 40a		FIRMA SIGNATURE	DATA DATE
		DISEGNATO: DESIGNED:		09/10/07
		APPROVATO: APPROVED:	Piero Guardabassi	09/10/07
 F.B.T. Elettronica Spa Zona ind.le Squartabue-62019 Reconati (MC) ITALIA (ITALY) P.A.E. AC QUBE tel.++39 071 750591 -fax++ 39 071 7505920 www.fbt.it		CODICE DISEGNO-DRAWING CODE S025735001-01		
		CODICE C.S.-PCB CODE 25734-01		
		CODICE-CODE 025735-01	FOGLIO-SHEET 1 OF 6	
PROPRIETA' RISERVATA, VIETATA LA DIVULGAZIONE O LA RIPRODUZIONE TOTALE E/O PARZIALE DEL PRESENTE DISEGNO		ALL RIGHTS RESERVED, UNAUTHORIZED REPRODUCTION, MODIFICATION OR DISTRIBUTION OF ANY PORTION OF THIS DOCUMENT IS FORBIDDEN		



OGGETTO: OBJECT:	POWER UNIT H.F. HI MaxX 40a		FIRMA SIGNATURE	DATA DATE
		DISEGNATO: DESIGNED:	<i>De Angelo</i>	09/10/07
		APPROVATO: APPROVED:	Andrea Fusco	09/10/07
 F.B.T. Elettronica Spa Zona ind.le Squartabue-62019 Recanati (MC) ITALIA (ITALY) P.A.E. AC QUBE tel.+39 071 750591 -fax++ 39 071 7505920 www.fbt.it			CODICE DISEGNO-DRAWING CODE S025735001-01	
			CODICE C.S.-PCB CODE 25734-01	
			CODICE-CODE 025735-01	
PROPRIETA' RISERVATA, VIETATA LA DIVULGAZIONE O LA RIPRODUZIONE TOTALE E/O PARZIALE DEL PRESENTE DISEGNO			ALL RIGHTS RESERVED, UNAUTHORIZED REPRODUCTION, MODIFICATION OR DISTRIBUTION OF ANY PORTION OF THIS DOCUMENT IS FORBIDDEN	
			FOGLIO-SHEET 2 OF 6	

6

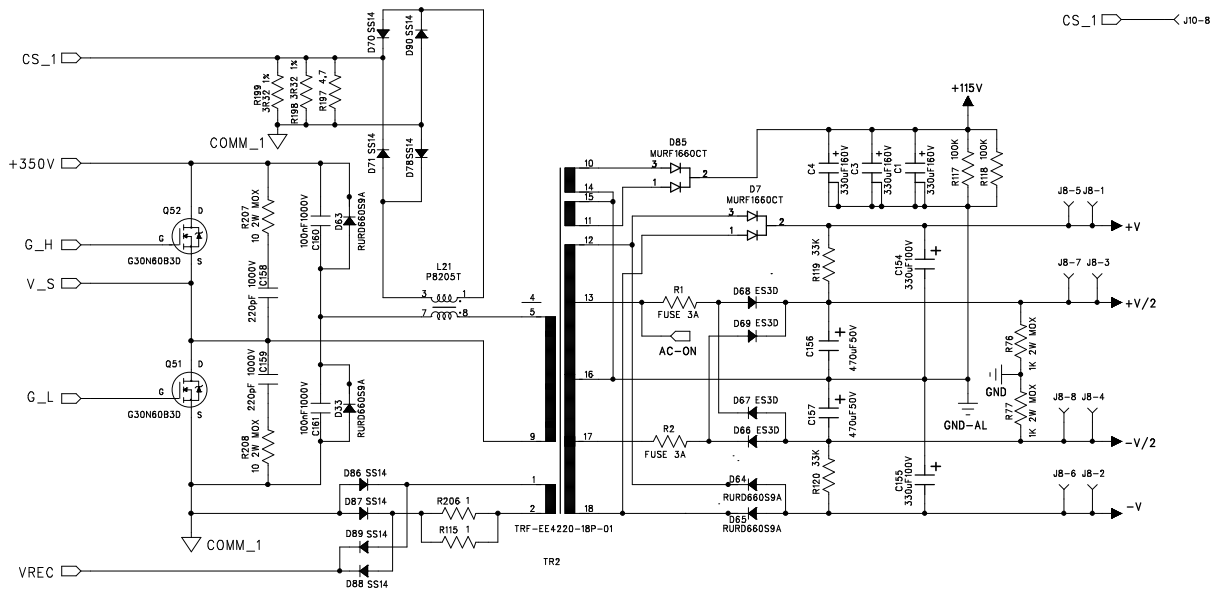
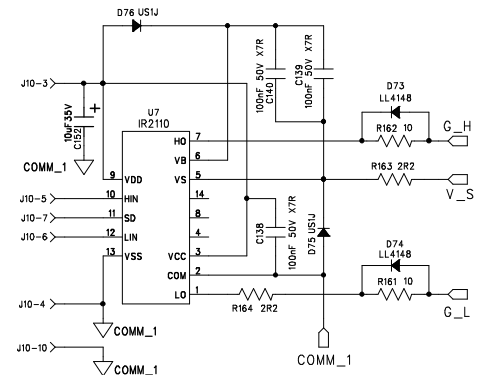
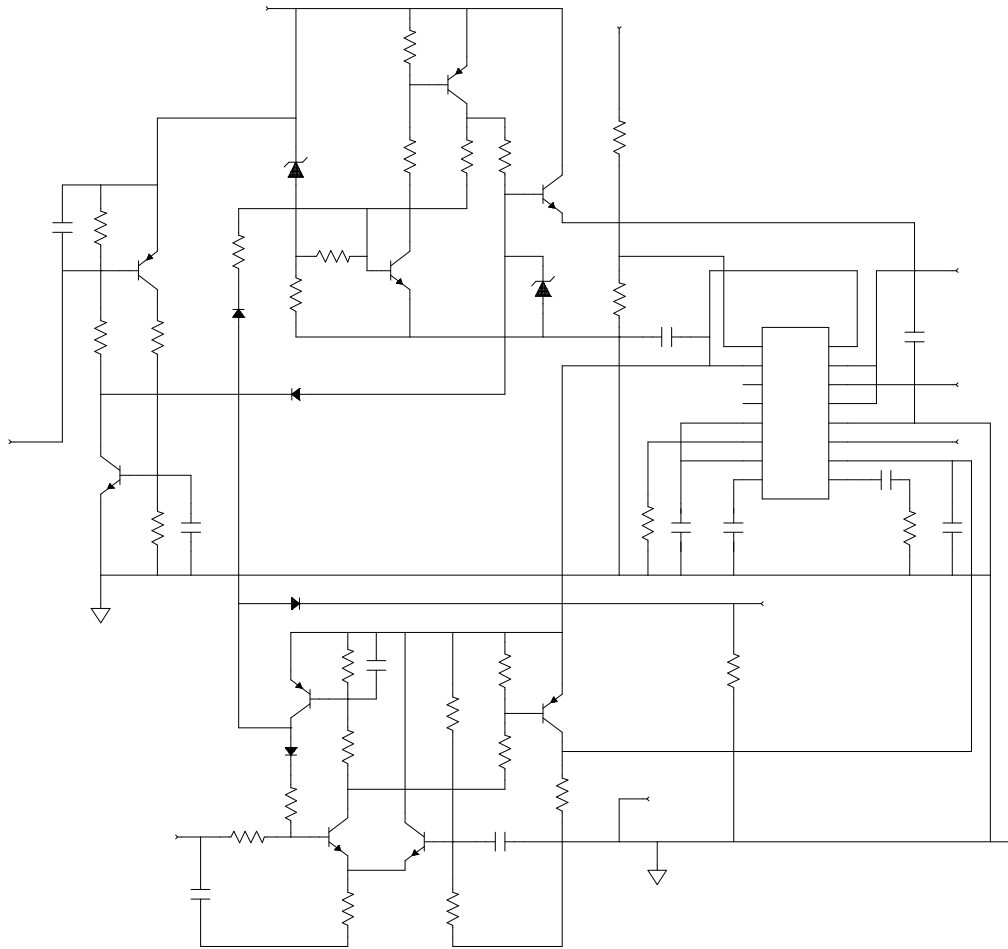
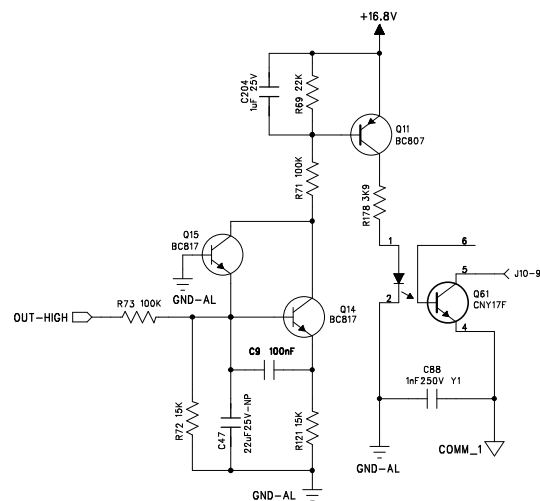
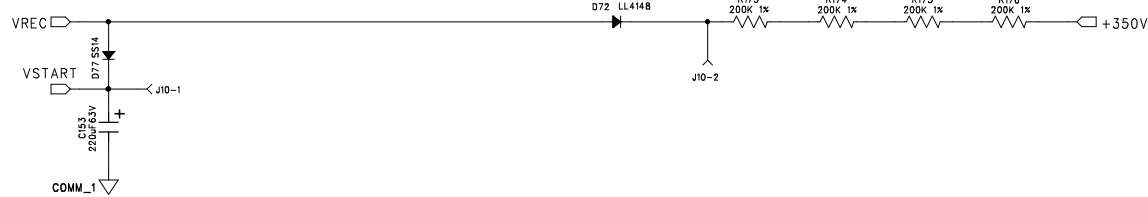
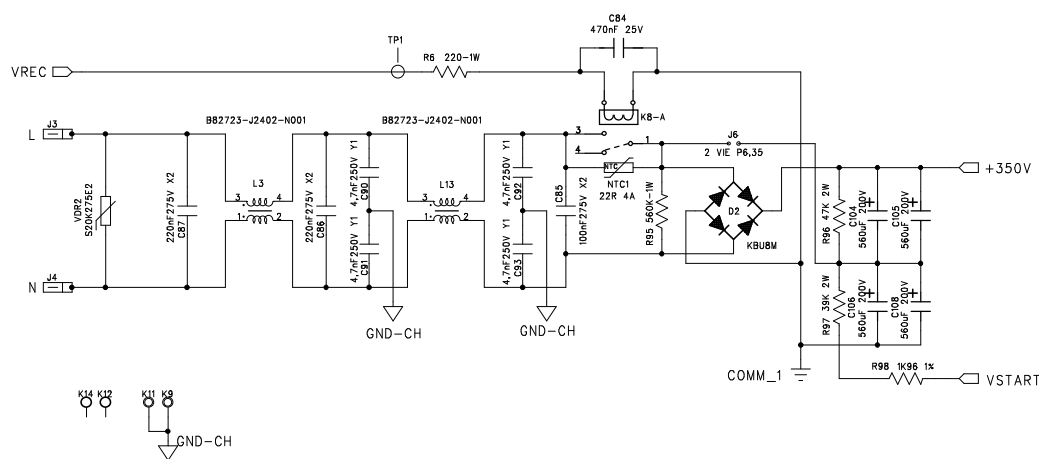
5

4

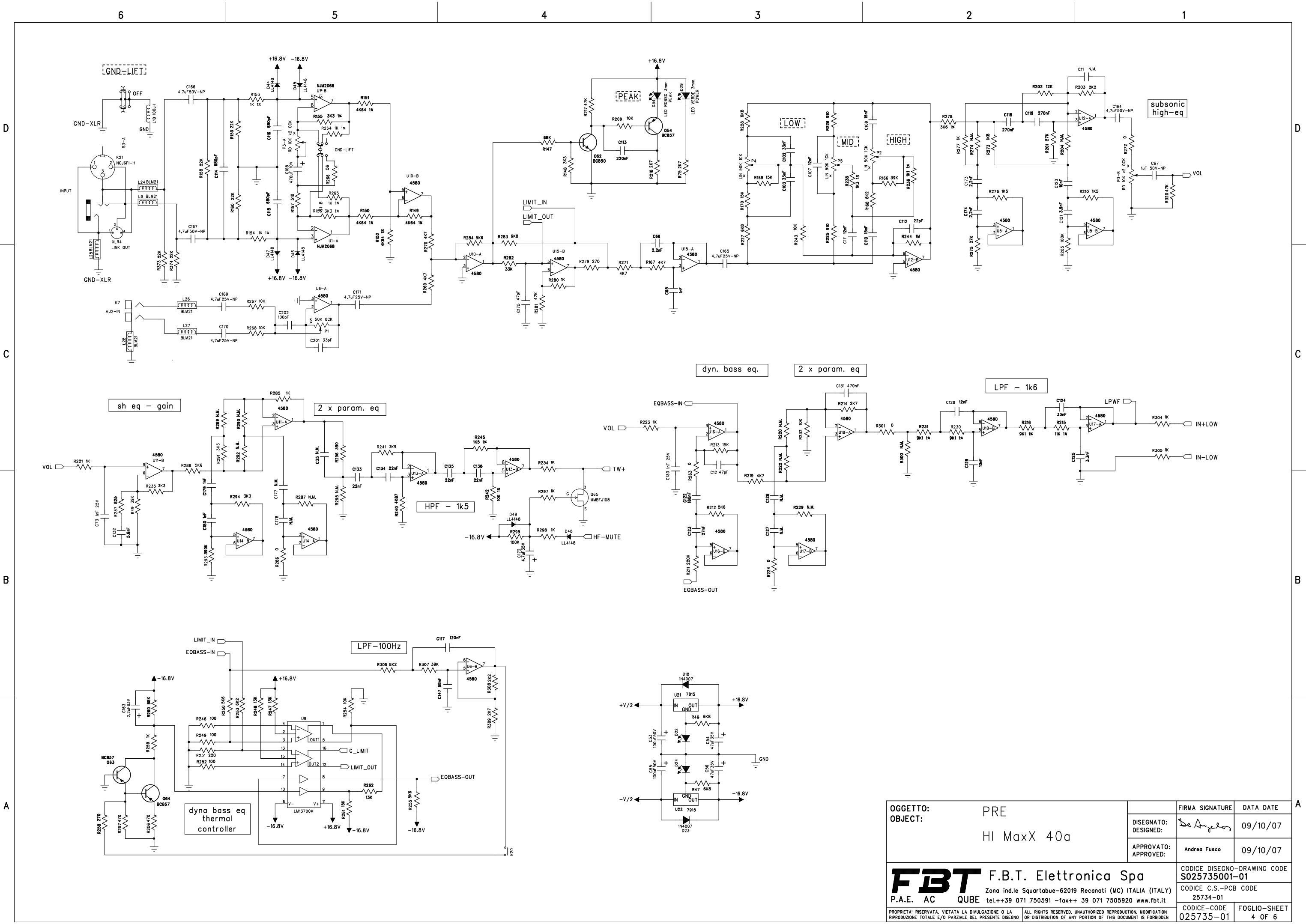
3

2

1



OGGETTO: OBJECT:	ALIM-SW HI MaxX 40a		FIRMA SIGNATURE	DATA DATE
		DISEGNATO: DESIGNED:	<i>De Angelis</i>	10/02/08
		APPROVATO: APPROVED:	Angelo Nicolini	09/10/07
F B T F.B.T. Elettronica Spa Zona ind.le Squartabue-62019 Reconati (MC) ITALIA (ITALY) P.A.E. AC QUBE tel.++39 071 750591 -fax++ 39 071 7505920 www.fbt.it			CODICE DISEGNO-DRAWING CODE S025735001-01	
			CODICE C.S.-PCB CODE 25734-01	
PROPRIETA' RISERVATA. VIETATA LA DIVULGAZIONE O LA RIPRODUZIONE TOTALE E/O PARZIALE DEL PRESENTE DISEGNO			CODICE-CODE 025735-01	
ALL RIGHTS RESERVED. UNAUTHORIZED REPRODUCTION, MODIFICATION OR DISTRIBUTION OF ANY PORTION OF THIS DOCUMENT IS FORBIDDEN			FOGLIO-SHEET 3 OF 6	



OGGETTO: OBJECT:	PRE HI MaxX 40a		FIRMA SIGNATURE	DATA DATE
		DISEGNATO: DESIGNED:		09/10/07
		APPROVATO: APPROVED:	Andrea Fusco	09/10/07
FBT F.B.T. Elettronica Spa Zona ind.le Squartabue-62019 Recanati (MC) ITALIA (ITALY) P.A.E. AC QUBE tel.++39 071 750591 -fax++ 39 071 7505920 www.fbt.it		CODICE DISEGNO-DRAWING CODE S025735001-01		
		CODICE C.S.-PCB CODE 25734-01		
		CODICE-CODE 025735-01		FOGLIO-SHEET 4 OF 6
		PROPRIETA' RISERVATA. VIETATA LA DIVULGAZIONE O LA RIPRODUZIONE TOTALE E/O PARZIALE DEL PRESENTE DISEGNO ALL RIGHTS RESERVED. UNAUTHORIZED REPRODUCTION, MODIFICATION OR DISTRIBUTION OF ANY PORTION OF THIS DOCUMENT IS FORBIDDEN		

D

C

B

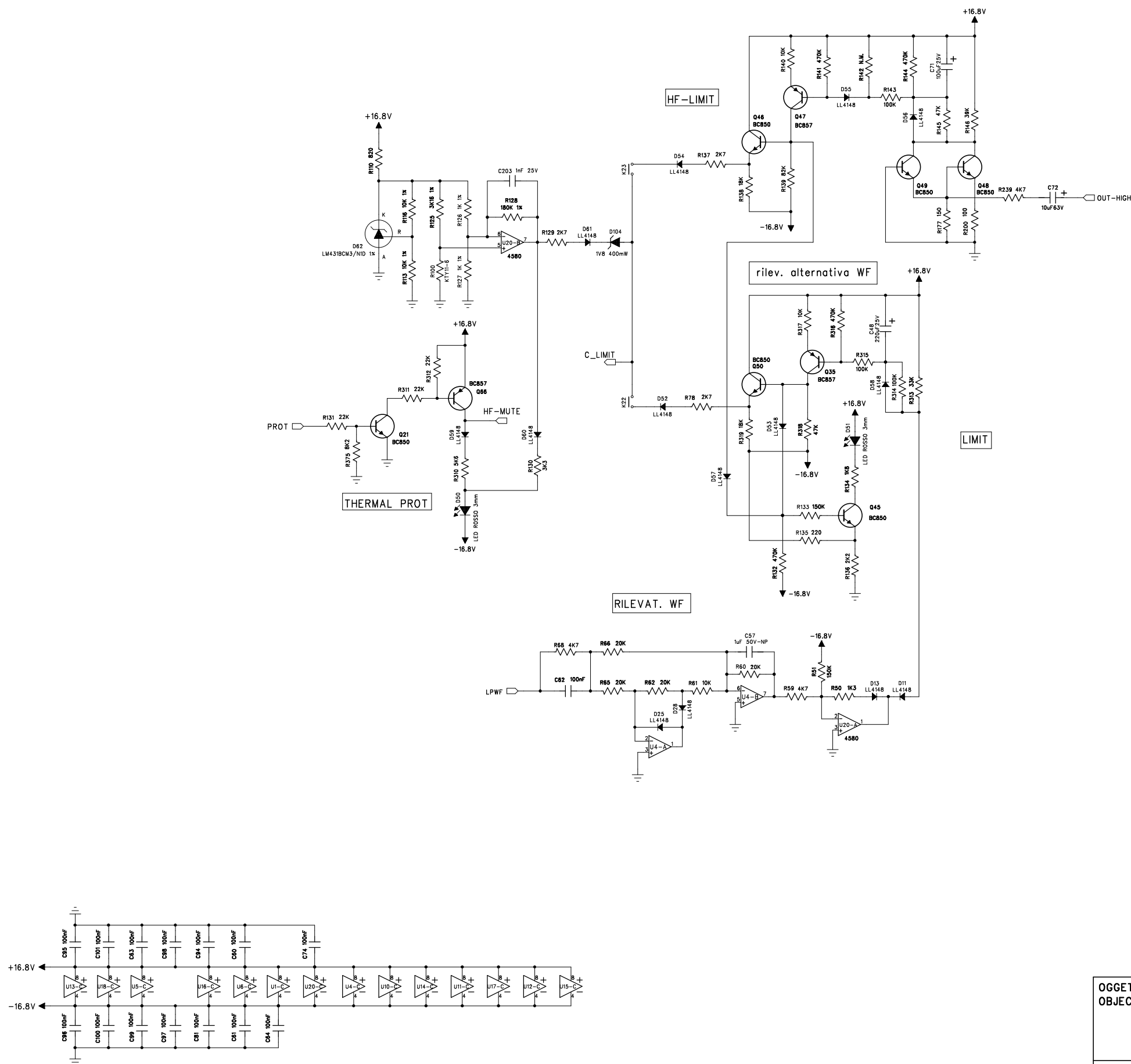
A

D

C

B

A



OGGETTO: OBJECT:	THERMAL HI MaxX 40a		FIRMA SIGNATURE	DATA DATE
		DISEGNATO: DESIGNED:	<i>De Angelis</i>	09/10/07
		APPROVATO: APPROVED:	Andrea Fusco	09/10/07
FBT F.B.T. Elettronica Spa Zona ind.le Squartabue-62019 Recanati (MC) ITALIA (ITALY) P.A.E. AC QUBE tel.++39 071 750591 -fax++ 39 071 7505920 www.fbt.it		CODICE DISEGNO-DRAWING CODE S025735001-01		
		CODICE C.S.-PCB CODE 25734-01		
PROPRIETA' RISERVATA. VIETATA LA DIVULGAZIONE O LA RIPRODUZIONE TOTALE E/O PARZIALE DEL PRESENTE DISEGNO		ALL RIGHTS RESERVED. UNAUTHORIZED REPRODUCTION, MODIFICATION OR DISTRIBUTION OF ANY PORTION OF THIS DOCUMENT IS FORBIDDEN		
		CODICE-CODE 025735-01	FOGLIO-SHEET 5 OF 6	

D

TP141 \$\$\$24934
TP335 L
TP336 N
TP338 \$\$\$30057
TP339 \$\$\$26124
TP300 \$\$\$25505
TP306 +350V
TP314 \$\$\$24471
TP295 COMM_1
TP286 COMM_1
TP242 \$\$\$32134
TP238 VSTART
TP334 GND-CH
TP336 GND-CH
TP243 VREC
TP282 \$\$\$20257
TP276 +350V
TP107 +16.8V
TP166 \$\$\$18034
TP162 \$\$\$18215

TP160 \$\$\$31199
TP161 \$\$\$7871
TP205 \$\$\$17927
TP182 \$\$\$17965
TP256 \$\$\$9640
TP276 \$\$\$20402
TP287 \$\$\$9652
TP337 \$\$\$11896
TP286 \$\$\$9653
TP213 G_H
TP288 \$\$\$9651
TP235 V_S
TP268 \$\$\$9660
TP238 G_L
TP289 \$\$\$9671
TP293 CS_1
TP240 \$\$\$9680
TP261 \$\$\$9681
TP237 \$\$\$9691

TP263 \$\$\$9679
TP248 V_S
TP229 \$\$\$9689
TP234 \$\$\$29319
TP227 \$\$\$29077
TP198 \$\$\$8734
TP202 \$\$\$9688
TP190 \$\$\$22483
TP188 \$\$\$22492
TP218 \$\$\$7077
TP217 \$\$\$4986
TP168 +115V
TP173 +115V
TP145 +V
TP174 +V
TP104 +V/2
TP198 +V/2
TP203 -V/2
TP41 -V/2
TP200 -V

TP70 -V
TP164 GND-AL
TP165 GND-AL
TP180 \$\$\$24974
TP167 \$\$\$26088
TP163 \$\$\$24257
TP207 \$\$\$30833
TP211 \$\$\$30342
TP153 LIMIT_IN
TP112 \$\$\$10713
TP130 \$\$\$28915
TP115 \$\$\$29979
TP135 \$\$\$23363
TP111 \$\$\$7212
TP108 \$\$\$7527
TP220 \$\$\$7666
TP255 \$\$\$8101
TP221 \$\$\$8185
TP260 \$\$\$8348
TP245 \$\$\$28695

TP244 \$\$\$28697
TP332 \$\$\$30325
TP325 \$\$\$12842
TP183 EOBASS-IN
TP178 \$\$\$828
TP283 \$\$\$380
TP274 \$\$\$28364
TP269 \$\$\$32141
TP299 \$\$\$7992
TP212 \$\$\$30356
TP219 \$\$\$27560
TP201 \$\$\$24006
TP193 EOBASS-OUT
TP301 \$\$\$32334
TP302 \$\$\$13867
TP294 \$\$\$27941
TP303 \$\$\$28116
TP310 HF-MUTE
TP298 \$\$\$13866
TP323 \$\$\$29377

TP329 \$\$\$26955
TP327 \$\$\$27403
TP328 \$\$\$27402
TP326 \$\$\$25863
TP311 \$\$\$16153
TP320 \$\$\$9312
TP317 \$\$\$14481
TP316 \$\$\$14482
TP67 \$\$\$18901
TP80 \$\$\$15158
TP57 \$\$\$22892
TP85 \$\$\$22907
TP29 \$\$\$19139
TP56 L-
TP82 \$\$\$30698
TP91 \$\$\$20014
TP81 \$\$\$25157
TP78 \$\$\$25144
TP71 \$\$\$25159

TP40 \$\$\$21955
TP24 \$\$\$30669
TP53 \$\$\$13977
TP30 \$\$\$1315
TP22 \$\$\$12950
TP204 AC-ON
TP8 \$\$\$8968
TP18 +13.5V
TP28 +13.5V
TP27 \$\$\$29724
TP5 \$\$\$3224
TP17 \$\$\$17011
TP20 GND-SIGN
TP26 PROT1
TP6 \$\$\$28696
TP2 \$\$\$28698
TP23 \$\$\$19400
TP96 -16.8V
TP297 PROT
TP4 IN+LOW

TP3 IN-LOW
TP19 GND2
TP11 LOW_B
TP12 HI_B
TP7 \$\$\$1803
TP15 \$\$\$25251
TP1 GND-PUL
TP9 \$\$\$11859
TP16 \$\$\$25252
TP10 LOW_A
TP13 HI_A
TP140 \$\$\$11598
TP54 +VPULF
TP59 +VPULF
TP128 GND1
TP136 GND1
TP93 \$\$\$27950
TP51 \$\$\$21146
TP39 \$\$\$9258
TP33 \$\$\$10565

TP31 \$\$\$867
TP34 \$\$\$11087
TP32 \$\$\$824
TP58 \$\$\$9616
TP48 \$\$\$11322
TP83 \$\$\$21147
TP139 \$\$\$7791
TP148 \$\$\$7789
TP177 \$\$\$28151
TP62 \$\$\$9257
TP58 \$\$\$11323
TP47 \$\$\$19510
TP49 \$\$\$17368
TP45 \$\$\$15870
TP44 \$\$\$26913
TP43 \$\$\$16077
TP42 \$\$\$26925
TP103 \$\$\$25250
TP102 \$\$\$25253
TP116 \$\$\$28773
TP110 \$\$\$28777
TP127 \$\$\$12168

TP134 \$\$\$1449
TP155 \$\$\$1448
TP133 \$\$\$1474
TP149 \$\$\$1472
TP162 \$\$\$12171
TP139 \$\$\$7791
TP148 \$\$\$7789
TP177 \$\$\$28151
TP186 \$\$\$15030
TP195 \$\$\$15031
TP181 \$\$\$28150
TP143 \$\$\$7037
TP159 \$\$\$7036
TP198 \$\$\$29751
TP176 \$\$\$29750
TP172 \$\$\$25137
TP171 \$\$\$27127
TP147 \$\$\$25094
TP154 \$\$\$25138
TP156 \$\$\$12892

TP167 \$\$\$12897
TP170 \$\$\$8995
TP252 \$\$\$8994
TP253 \$\$\$23578
TP272 \$\$\$25410
TP192 LIMIT_OUT
TP150 \$\$\$26126
TP146 \$\$\$10712
TP142 \$\$\$25745
TP296 \$\$\$30112
TP247 GND-XLR
TP187 \$\$\$9793
TP305 \$\$\$31630
TP284 \$\$\$8352
TP268 \$\$\$8352
TP99 \$\$\$19159
TP105 \$\$\$30914
TP101 \$\$\$30410
TP125 \$\$\$18290
TP119 \$\$\$4687

TP129 \$\$\$31551
TP120 \$\$\$4686
TP118 \$\$\$32737
TP132 \$\$\$18240
TP138 \$\$\$18239
TP125 \$\$\$28301
TP124 \$\$\$6764
TP113 \$\$\$7211
TP98 \$\$\$6904
TP123 \$\$\$30093
TP131 \$\$\$29983
TP117 \$\$\$7526
TP100 \$\$\$3111
TP137 \$\$\$23364
TP144 \$\$\$25312
TP151 \$\$\$28270
TP194 VOL
TP215 \$\$\$14100
TP214 \$\$\$25721
TP226 \$\$\$7847

TP251 \$\$\$8258
TP223 \$\$\$8184
TP230 \$\$\$8100
TP254 \$\$\$7901
TP250 \$\$\$8347
TP258 \$\$\$8514
TP150 \$\$\$7732
TP146 \$\$\$29172
TP231 \$\$\$4106
TP239 \$\$\$4109
TP241 \$\$\$4108
TP225 TW+
TP175 \$\$\$15775
TP175 \$\$\$23936
TP184 \$\$\$827
TP189 \$\$\$28332
TP169 \$\$\$29018
TP281 \$\$\$385
TP291 \$\$\$378
TP290 \$\$\$379

TP265 \$\$\$25855
TP262 \$\$\$25897
TP273 \$\$\$26365
TP271 \$\$\$15979
TP264 \$\$\$1488
TP279 LPWF
TP292 \$\$\$15942
TP210 \$\$\$30357
TP222 \$\$\$25453
TP257 \$\$\$29506
TP248 \$\$\$24726
TP259 \$\$\$29273
TP97 \$\$\$23281
TP114 \$\$\$17213
TP94 \$\$\$1022
TP307 C_LIMIT
TP313 \$\$\$26814
TP312 \$\$\$26084
TP324 \$\$\$29792
TP319 \$\$\$25998

C

TP333 \$\$\$11895
TP315 \$\$\$10064
TP321 \$\$\$26343
TP318 \$\$\$8719
TP309 \$\$\$26302
TP322 \$\$\$9304
TP304 \$\$\$25804
TP306 \$\$\$16154
TP185 \$\$\$31729
TP76 \$\$\$25146
TP72 \$\$\$25140
TP75 \$\$\$25155
TP87 \$\$\$25156
TP86 \$\$\$25154
TP85 \$\$\$25145
TP66 \$\$\$25158
TP77 \$\$\$13414
TP61 \$\$\$13662
TP73 \$\$\$25160
TP90 \$\$\$30347

TP92 \$\$\$29220
TP84 \$\$\$25166
TP89 \$\$\$20123
TP74 \$\$\$18742
TP69 OUT-HIGH
TP68 \$\$\$25165
TP64 \$\$\$30322
TP52 \$\$\$29261
TP46 \$\$\$23252
TP55 \$\$\$18729
TP88 \$\$\$23416
TP38 \$\$\$13978
TP37 \$\$\$12799
TP14 \$\$\$18513
TP79 \$\$\$23928
TP83 \$\$\$782
TP197 \$\$\$24257
TP267 \$\$\$28965
TP21 \$\$\$17661
TP25 \$\$\$19375

TP224 \$\$\$9690
TP228 \$\$\$9692
TP199 \$\$\$9686
TP126 \$\$\$11858
TP121 \$\$\$4535
TP106 \$\$\$4821
TP109 \$\$\$11499
TP208 \$\$\$14721
TP275 \$\$\$13561
TP277 \$\$\$13558
TP270 \$\$\$13559
TP206 \$\$\$14835
TP191 \$\$\$14651
TP339 \$\$\$30117
TP340 \$\$\$18241
TP341 \$\$\$15790
TP342 \$\$\$526
TP343 \$\$\$602
TP344 \$\$\$19206
TP345 \$\$\$5812

TP209 GND
TP233 GND
TP332 GND
TP335 GND
TP336 GND
TP95 GND
TP346 \$\$\$12915
TP347 \$\$\$12921

B

A

OGGETTO: OBJECT:	TEST POINT	FIRMA SIGNATURE	DATA DATE
	HI MaxX 40a	DISEGNATO: DESIGNED:	09/10/07
	APPROVATO: APPROVED: Bruno Tanoni	09/10/07	
F.B.T. F.B.T. Elettronica Spa Zona ind.le Squartabue-62019 Reconati (MC) ITALIA (ITALY) P.A.E. AC QUBE tel.++39 071 750591 -fax++ 39 071 7505920 www.fbt.it		CODICE DISEGNO-DRAWING CODE S025337001-01	
		CODICE C.S.-PCB CODE 25335-01	
		CODICE-CODE 025337-01	FOGLIO-SHEET 6 OF 6
PROPRIETA' RISERVATA. VIETATA LA DIVULGAZIONE O LA RIPRODUZIONE TOTALE E/O PARZIALE DEL PRESENTE DISEGNO ALL RIGHTS RESERVED. UNAUTHORIZED REPRODUCTION, MODIFICATION OR DISTRIBUTION OF ANY PORTION OF THIS DOCUMENT IS FORBIDDEN			

D

C

B

A

