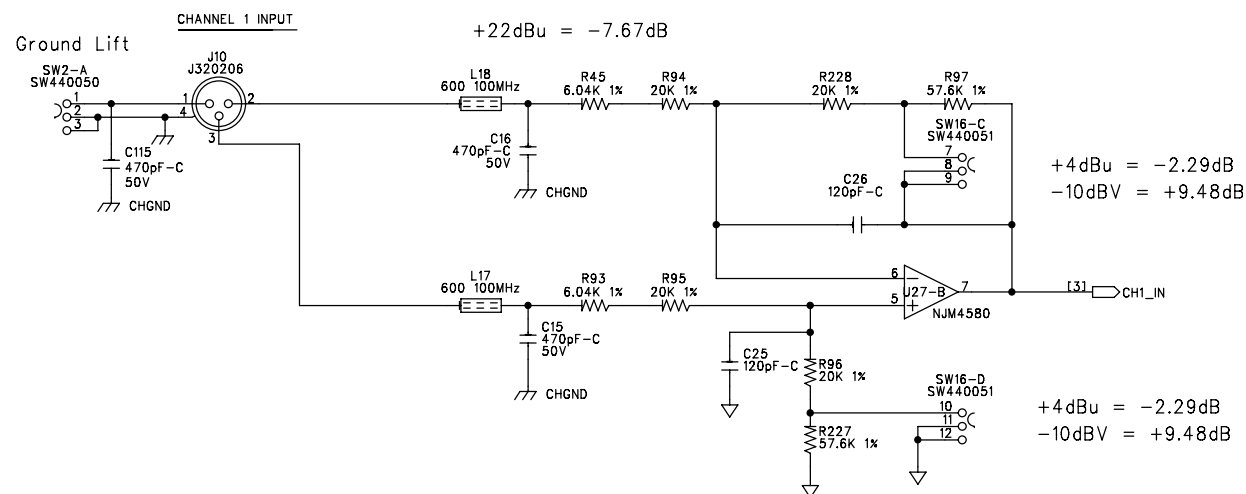


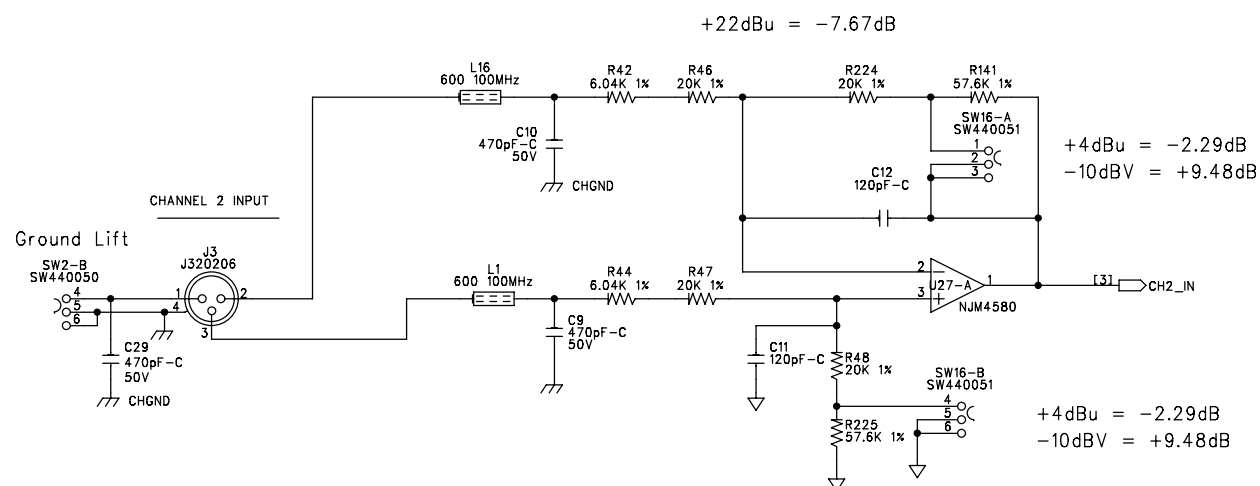
G2	EEPROM UPDATE TO INCLUDE FIRMWARE RELEASE 2.00.	33509	RM	02-05-07
G1	OMIT J12	32351	RM	07-31-06
G0	RELEASE TO PRODUCTION CHANGED SOLDERMASK, ADDED FIDUCIALS, UPDATE 0603 SILKSCREEN	30099	DWB	1-21-05
F0	RELEASE TO PRODUCTION CHANGED LCD ADAPTER PC BOARD	3120	DWB	12-8-04
E1	REPLACE L15,L26,L27,L28,L29,L30 W/(50-1300) 0 OHM RESISTOR	2672	DWB	10-1-03
E0	ADD SOLDER MASK TO VIAS ON SOLDER SIDE OF PCB CHANGE ALL 0603 PARTS ON PCB TO REMOVE SILKSCREEN OUTLINE	227B	BJK	10-18-02
D1	REMOVE EPROM SOCKET, RELEASE TO PRODUCTION	215B	DWB	8-9-02
D0	RELEASE TO PRODUCTION	2085	DWB	6-12-02
C2	RELEASE TO PRODUCTION	2084	DWB	6-12-02
C1	NEVER RELEASED TO MANUFACTURING			
C0	RELEASE TO PRODUCTION	2060	DWB	5-16-02
B0	RELEASE TO PRODUCTION		BDP	5-7-02
A3	CHANGE CAPACITOR C79, C80, C81 AND P1 TO 60-0201	2047	DWB	4-26-02
A2	Change C131, C126 from .1uF to 2.2uF. Install 100uF cap at P3. Add 20 Ohm resistor at R337.	2036	RBB	4-15-02
A1	Change R28, R29, R36 and R266 from 1K to 10K Remove 44 pin PLCC socket for microprocessor	2028	RBB	4-05-02
A0	RELEASE TO PRODUCTION		DWB	3-25-02
REV	DESCRIPTION	ECN #	INIT	DATE
REVISION HISTORY				
dbx PROFESSIONAL PRODUCTS 8760 South Sandy Parkway Sandy Utah 84070				
TITLE:  dbx DriveRack PA MAIN PCB				
DESIGNER: DAVID W. BYBEE		ENGINEER: R. BOATRIGHT		
SIZE: A	DRAWING NO: 05-1790			REVISION G2
DATE: 02-05-07	FILENAME: 051790G2.SCH		SHEET: 1 OF 15	

SC15  
SC340125

SC14  
SC340125

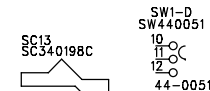
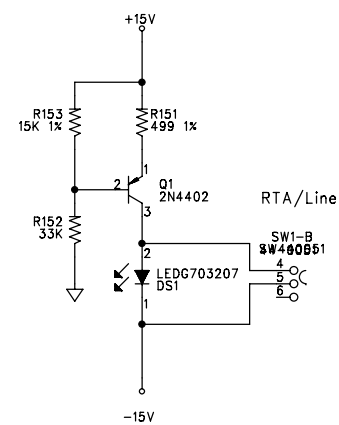
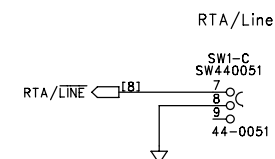
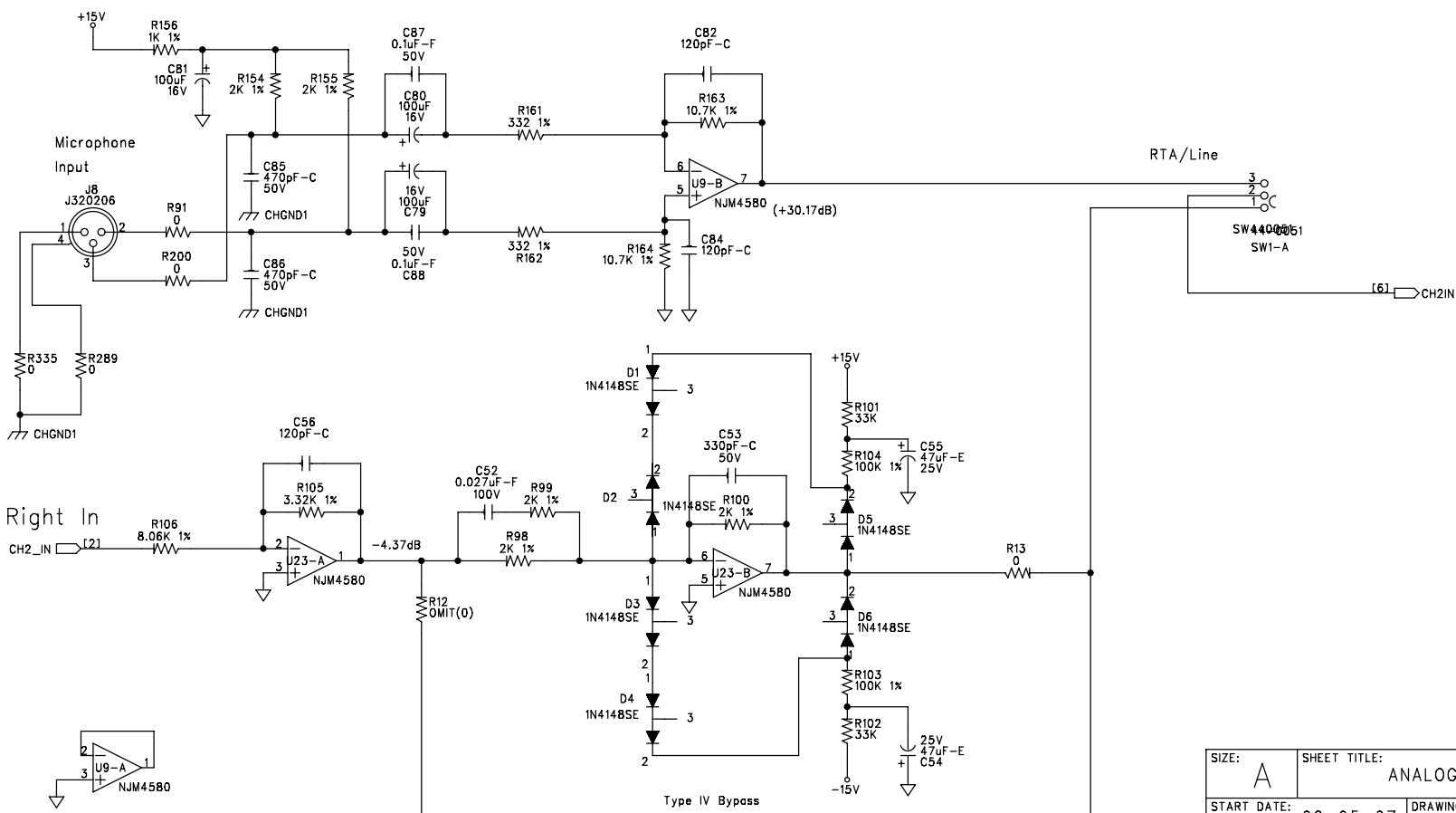
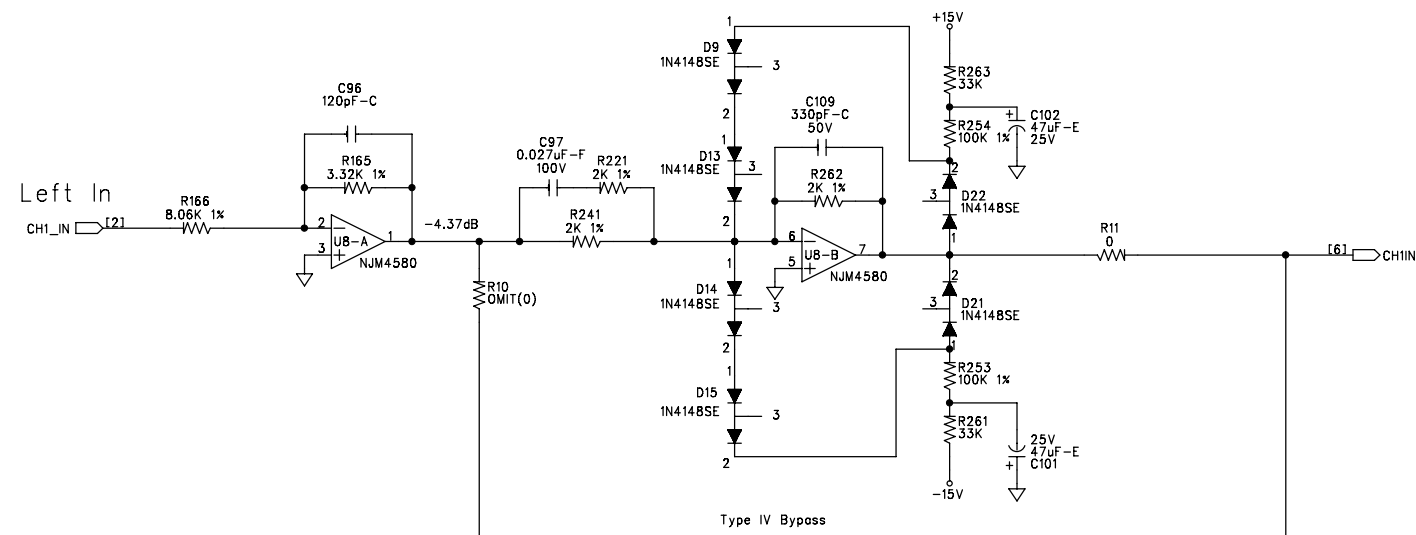


Left In

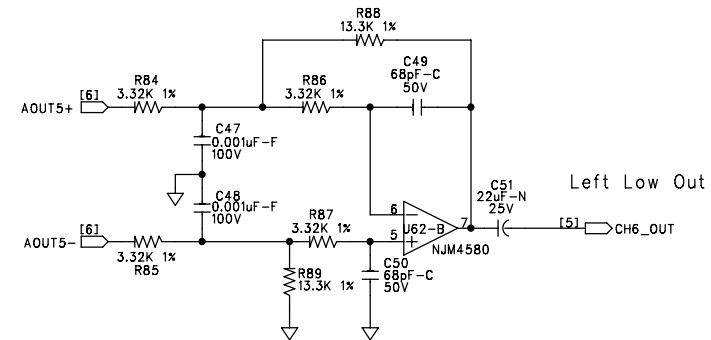
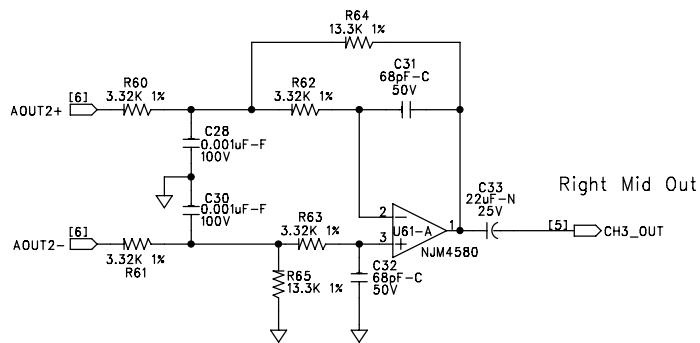
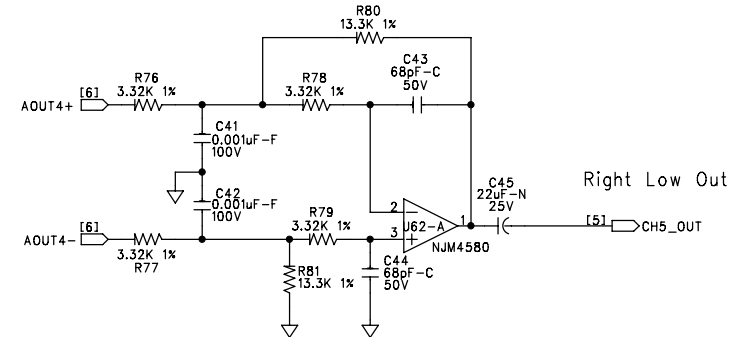
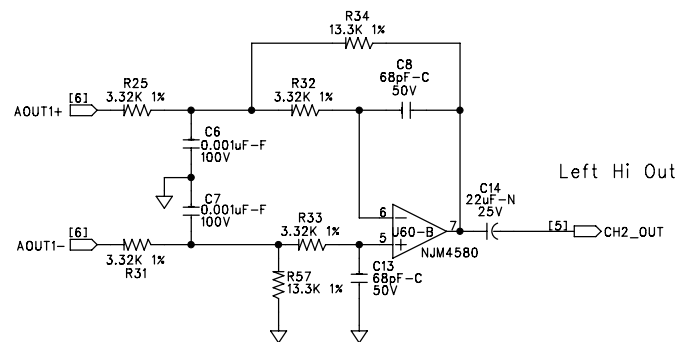
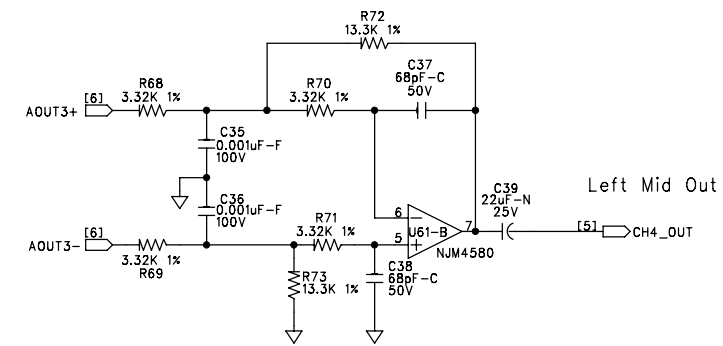
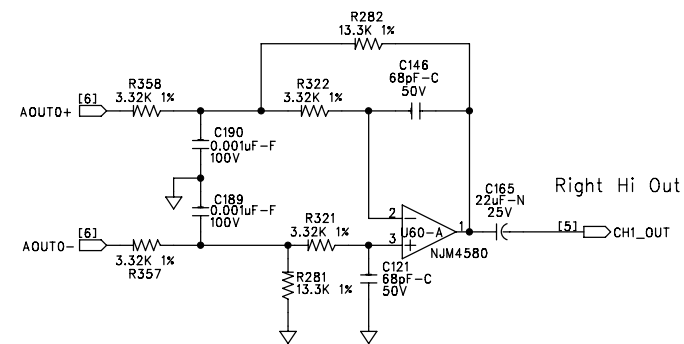


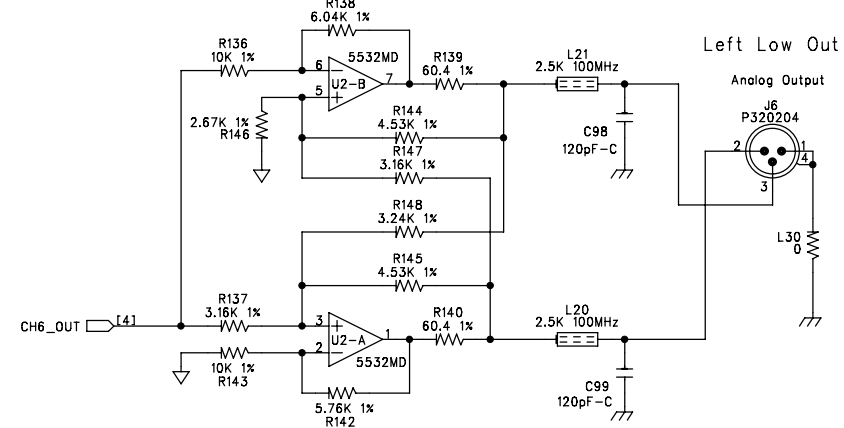
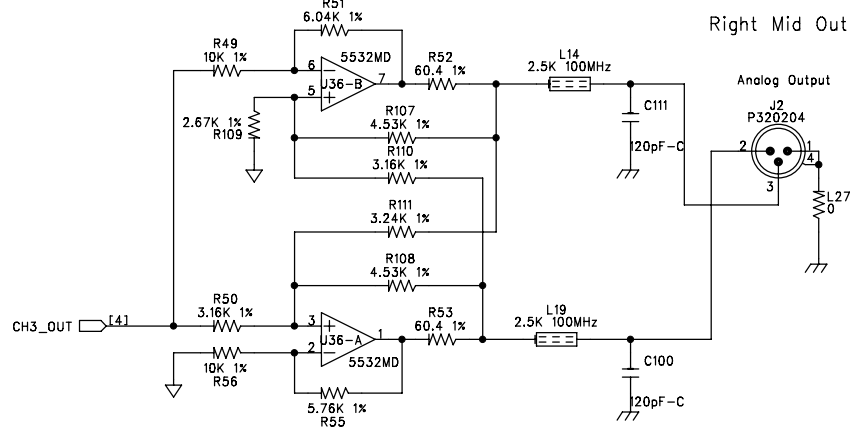
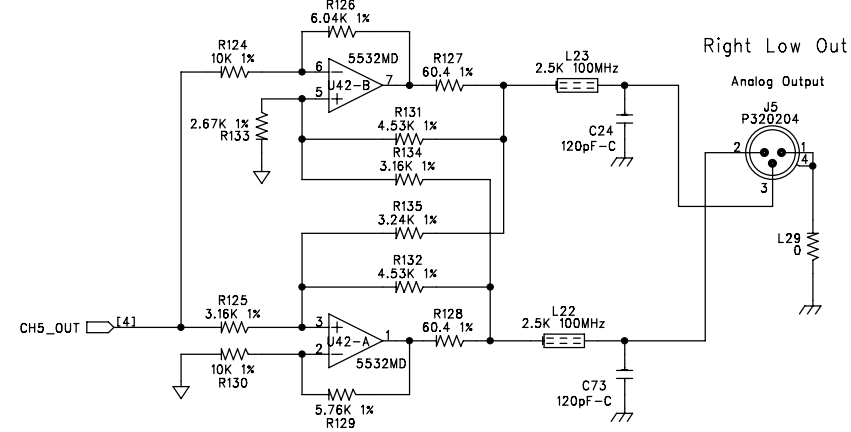
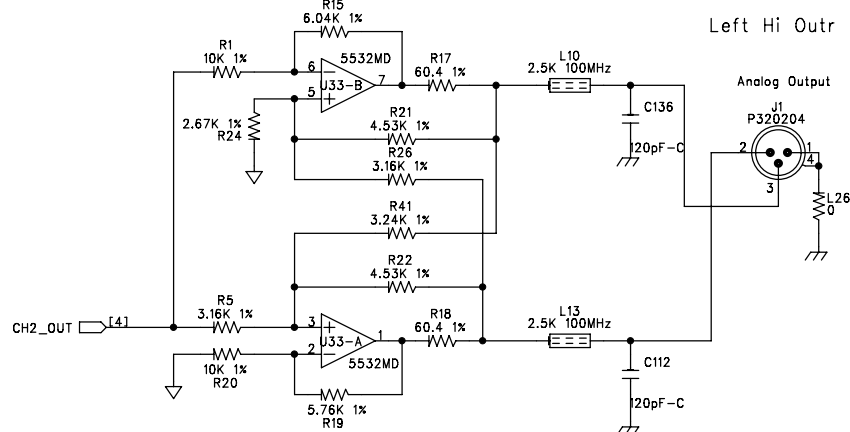
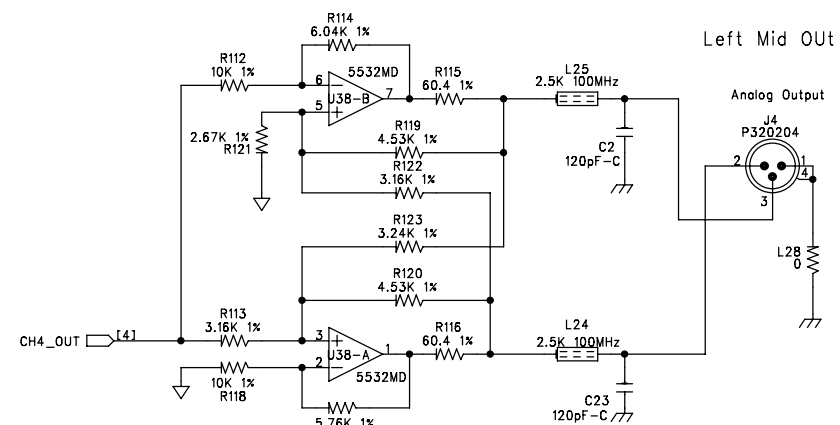
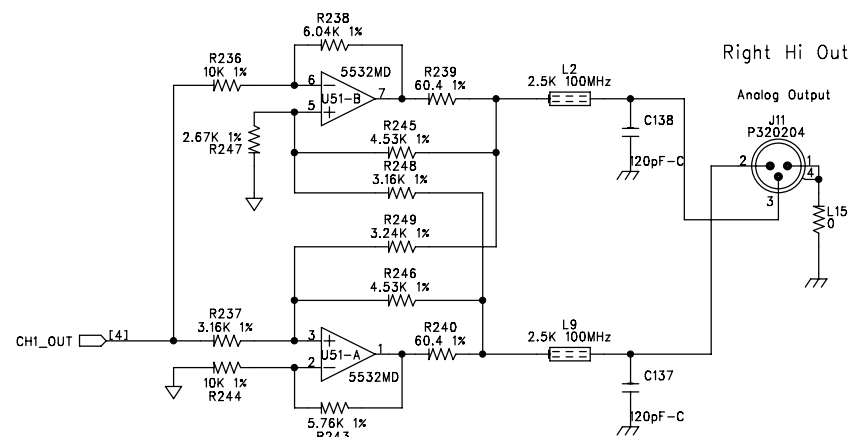
Right In

SIZE: A	SHEET TITLE: CHANNEL 1 & 2 INPUTS	REVISION G2
START DATE: 02-05-07	DRAWING NO: 05-1790	SHEET: 2 OF 15

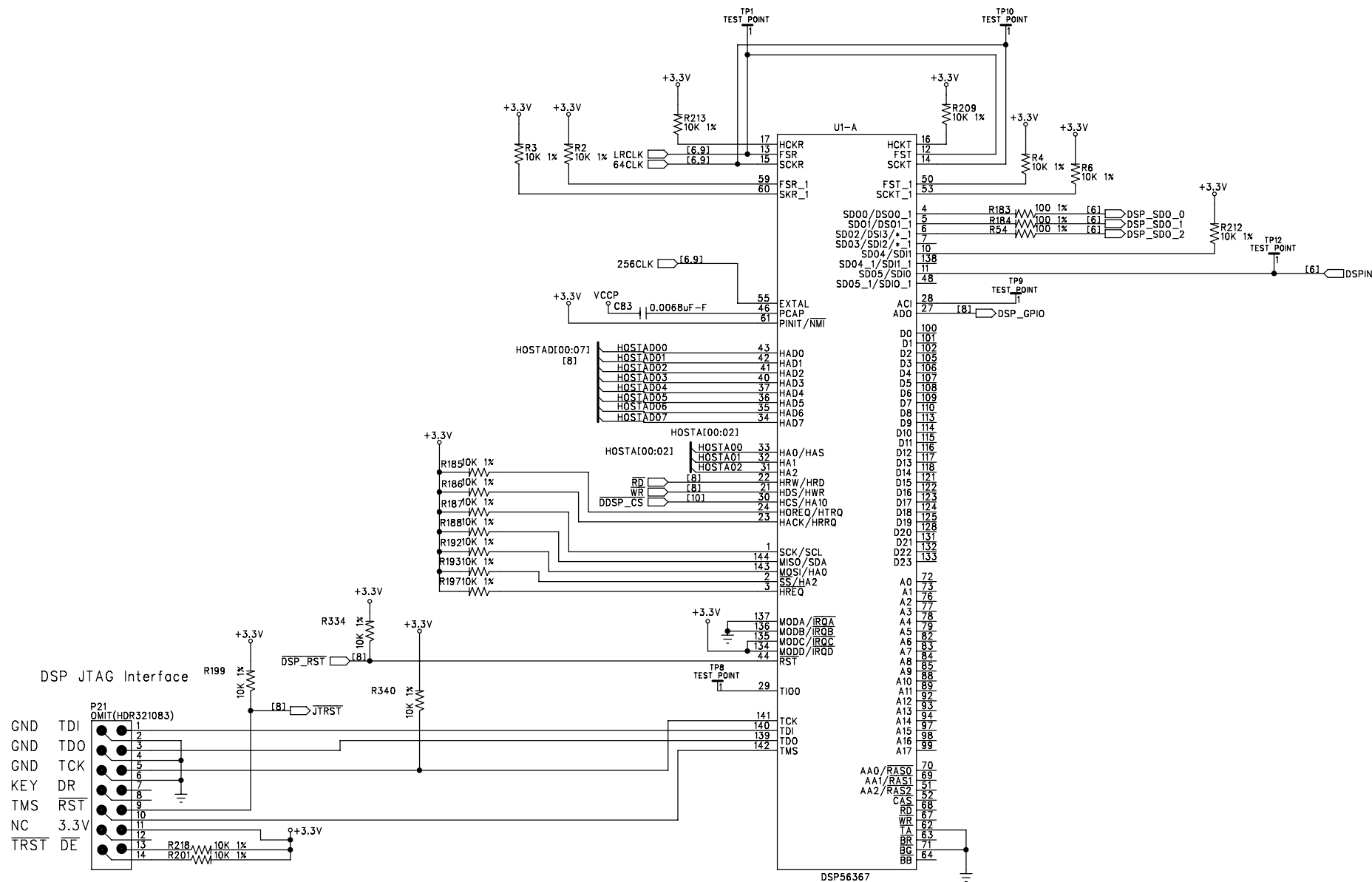


SIZE: A	SHEET TITLE: ANALOG CHANNEL 1 & 2 INPUTS	REVISION: G2
START DATE: 02-05-07	DRAWING NO: 05-1790	SHEET: 3 OF 15

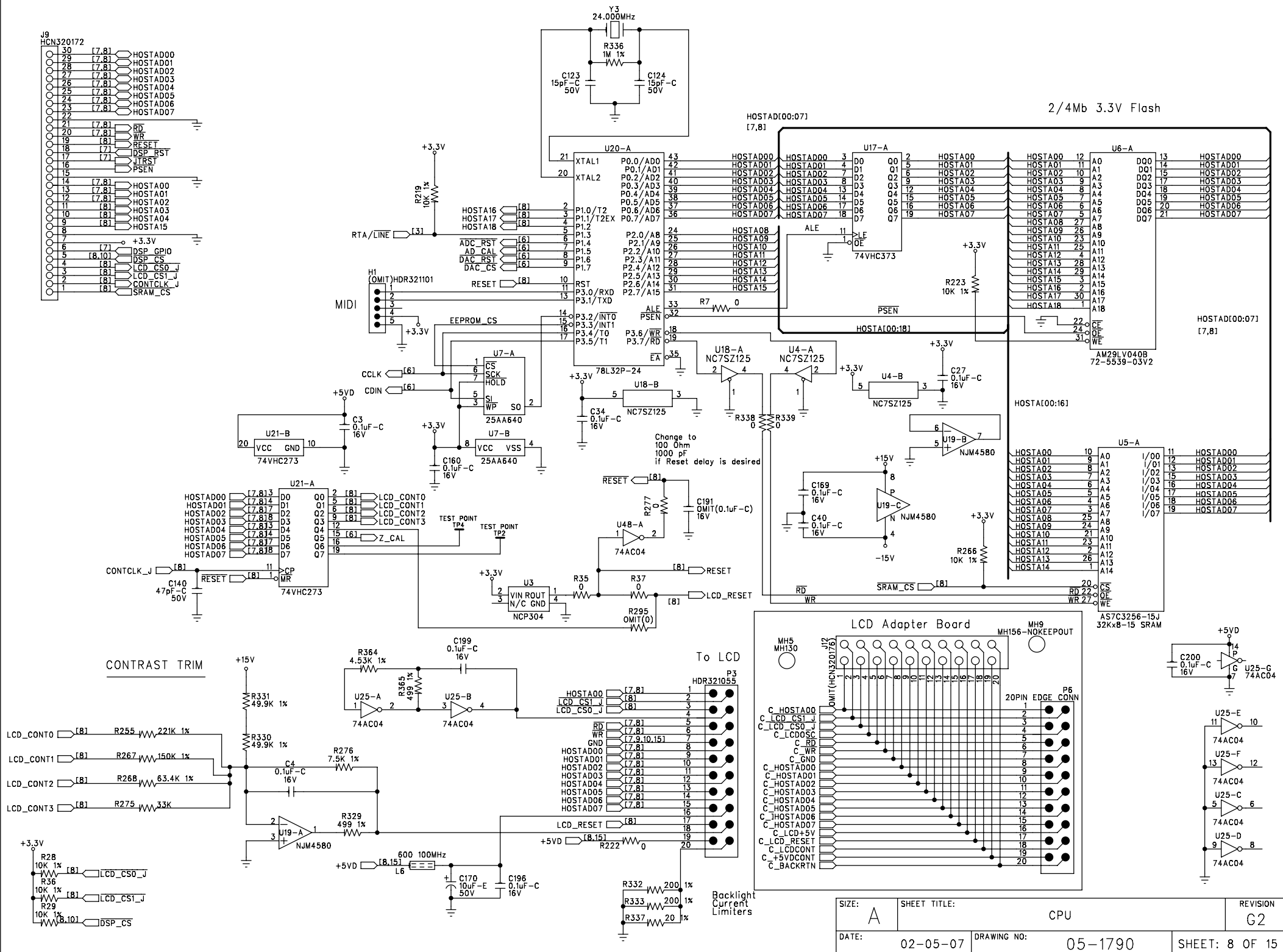








CONTRAST TRIM

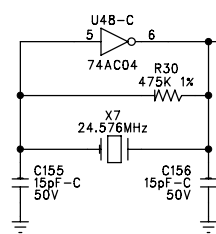




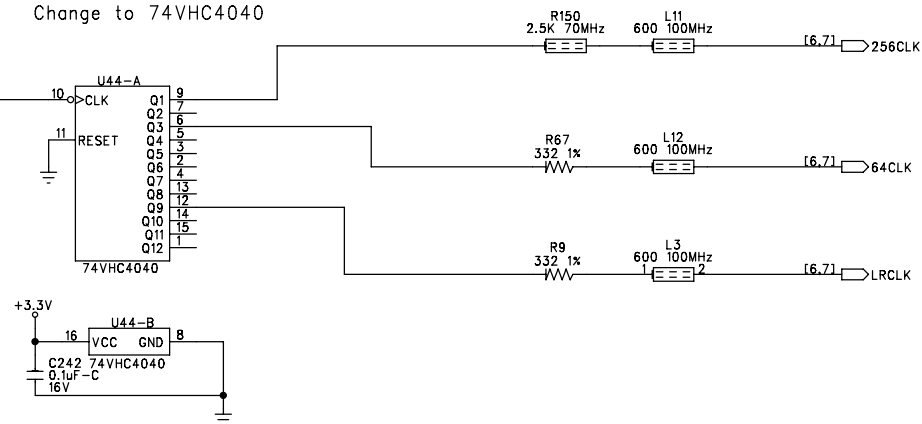
## Divider/Clock Tree

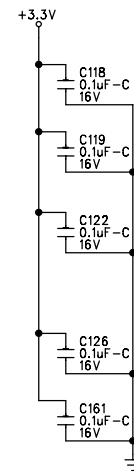
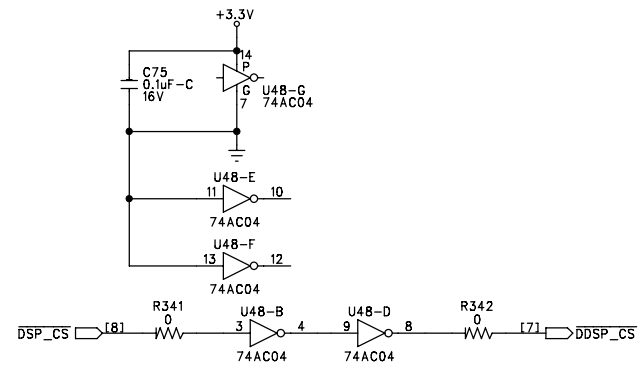
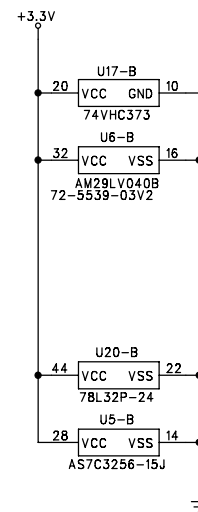
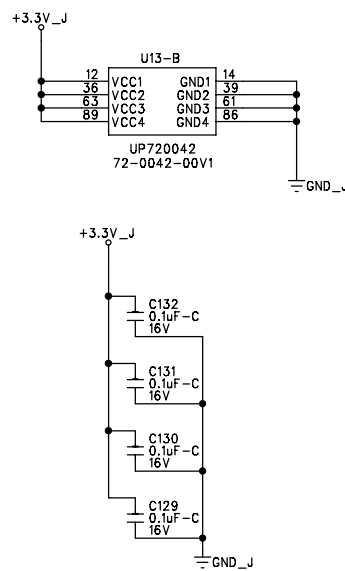
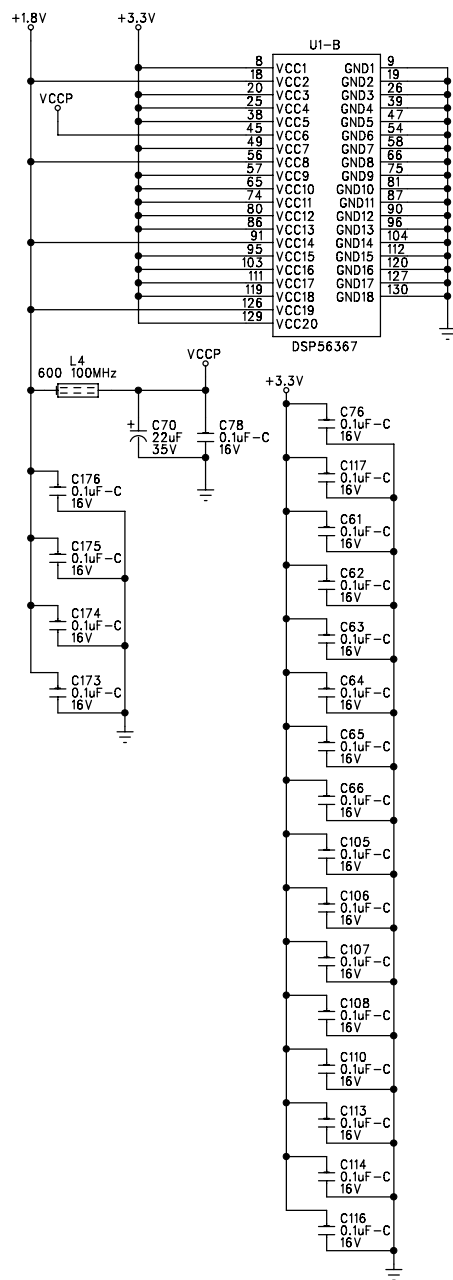
## x512fs Crystal Oscillator

24.576 MHz

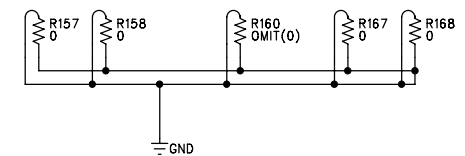


Change to 74VHC4040

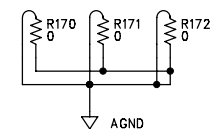


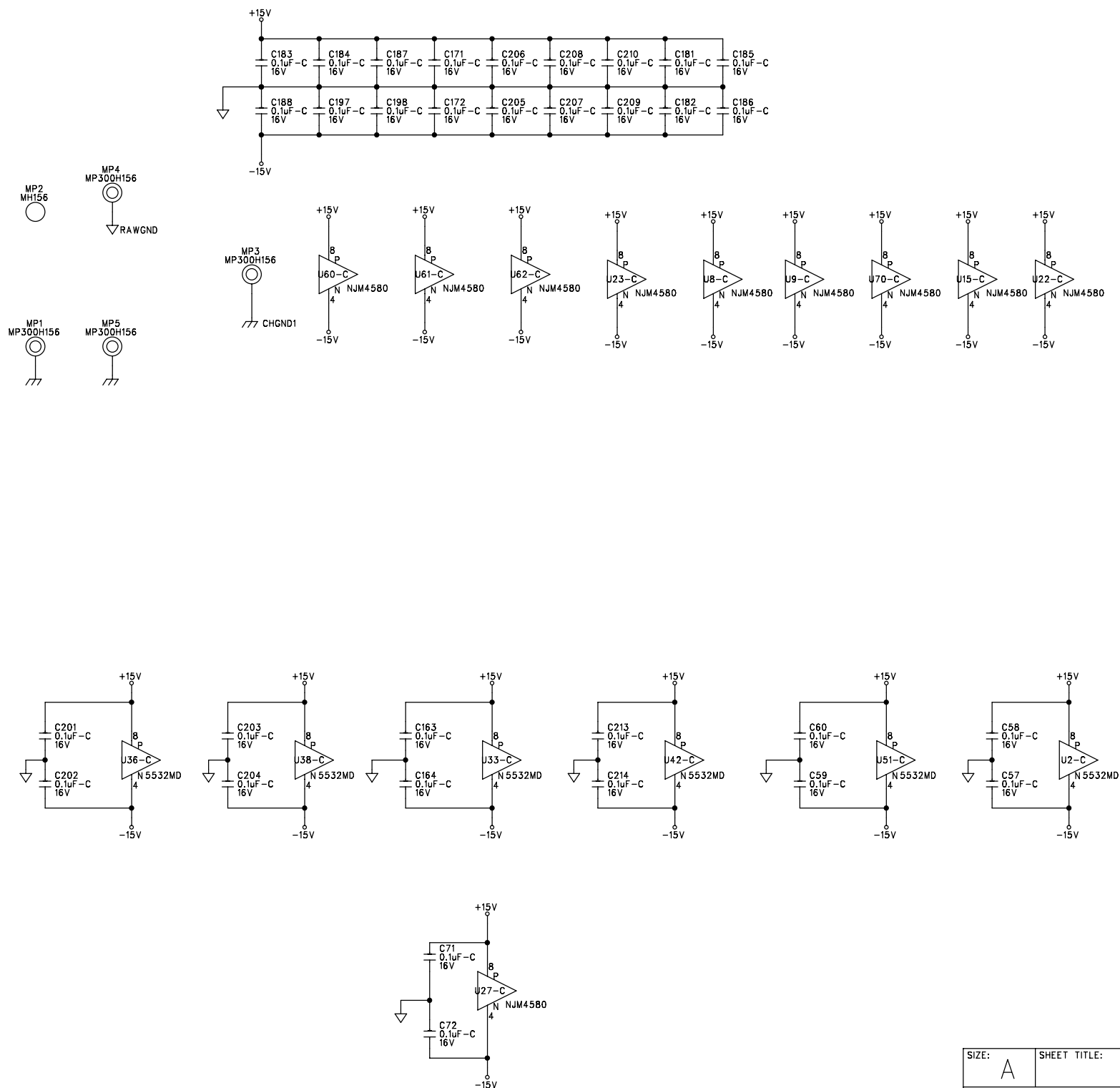


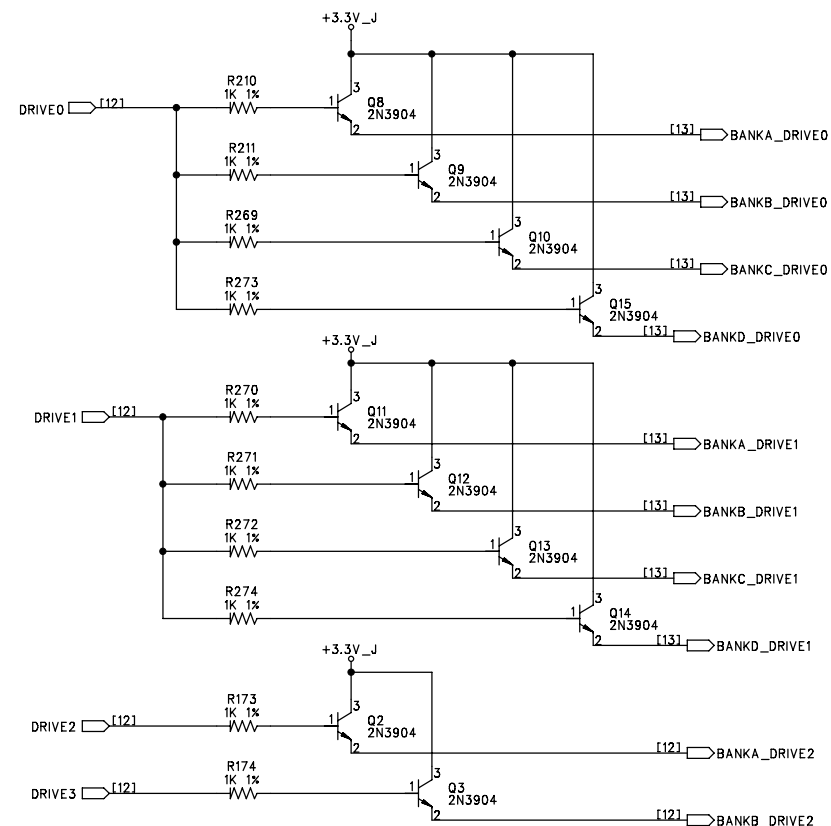
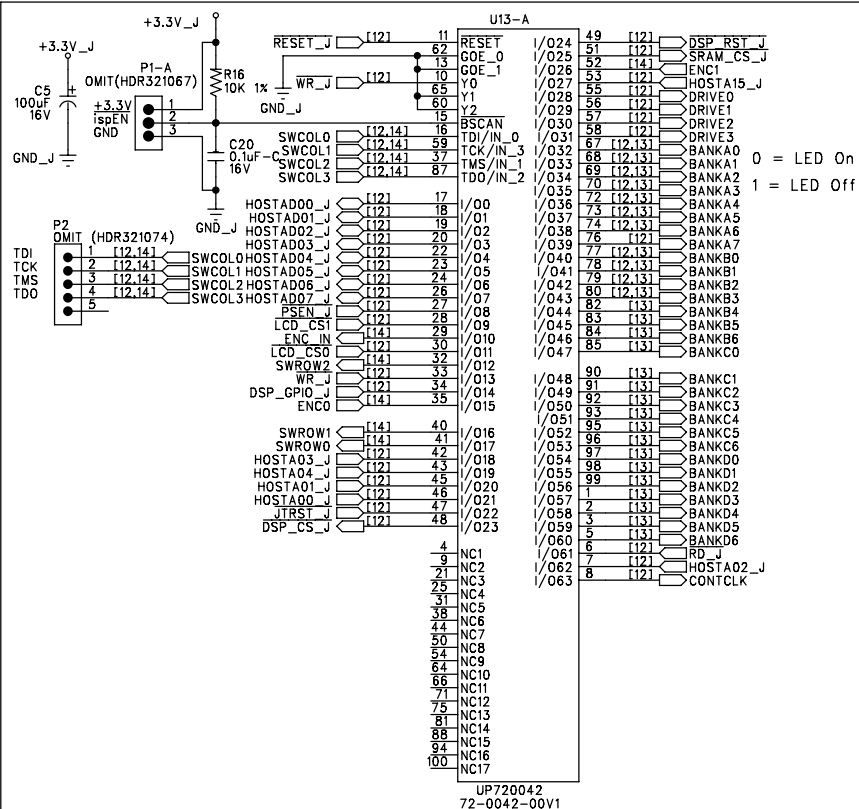
### Digital Ground Test Points

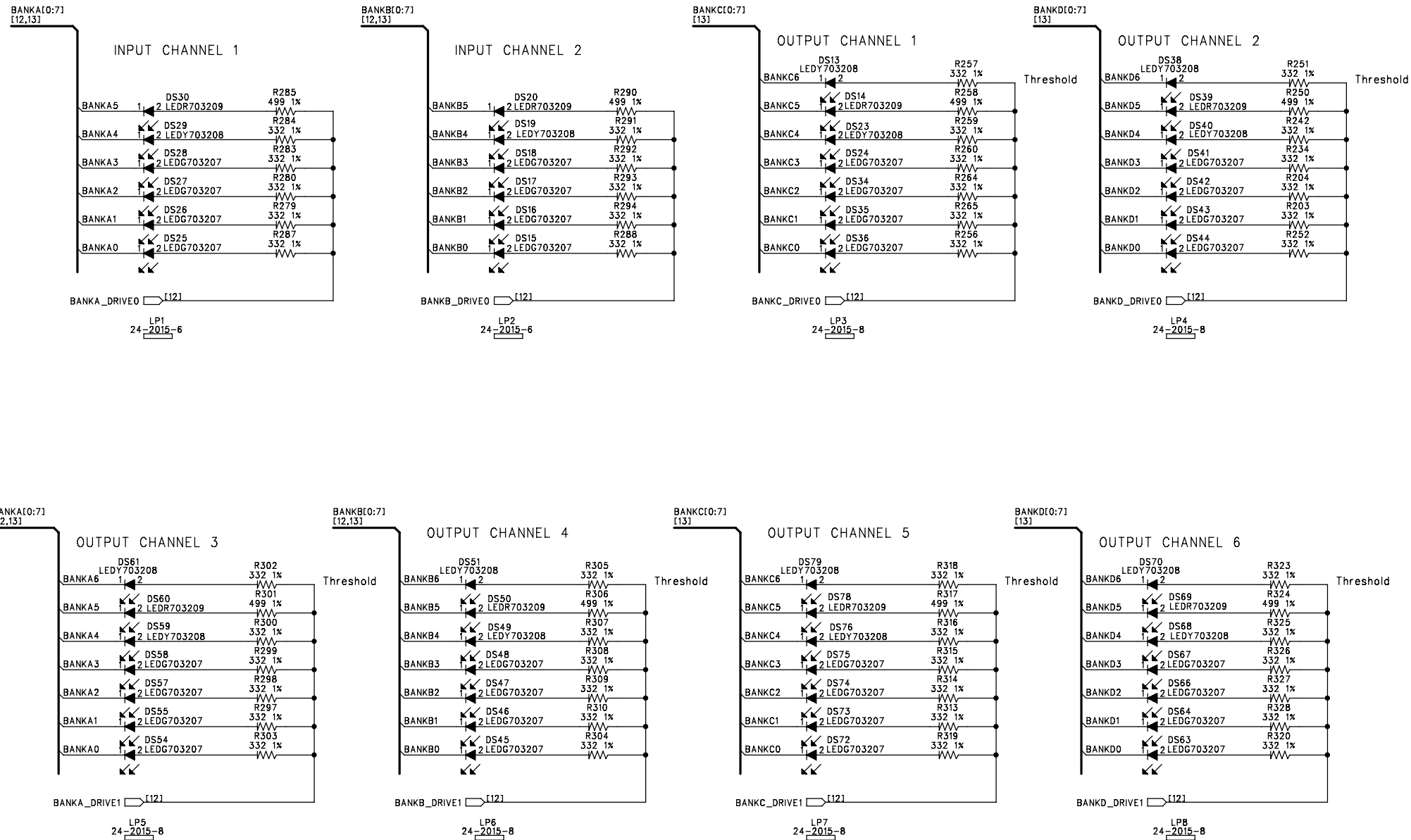


### Analog Ground Test Points

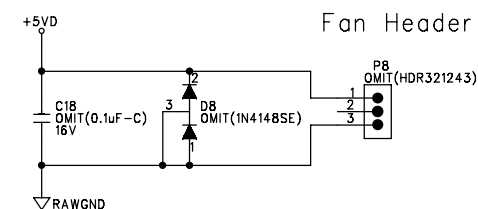
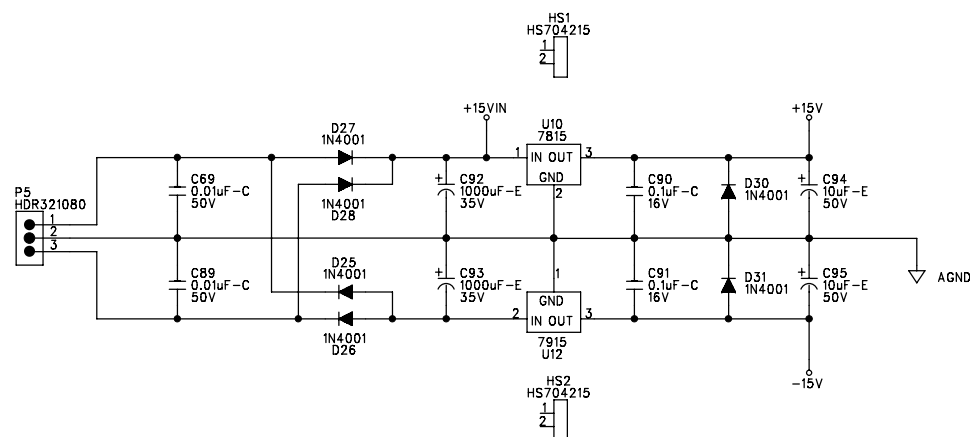




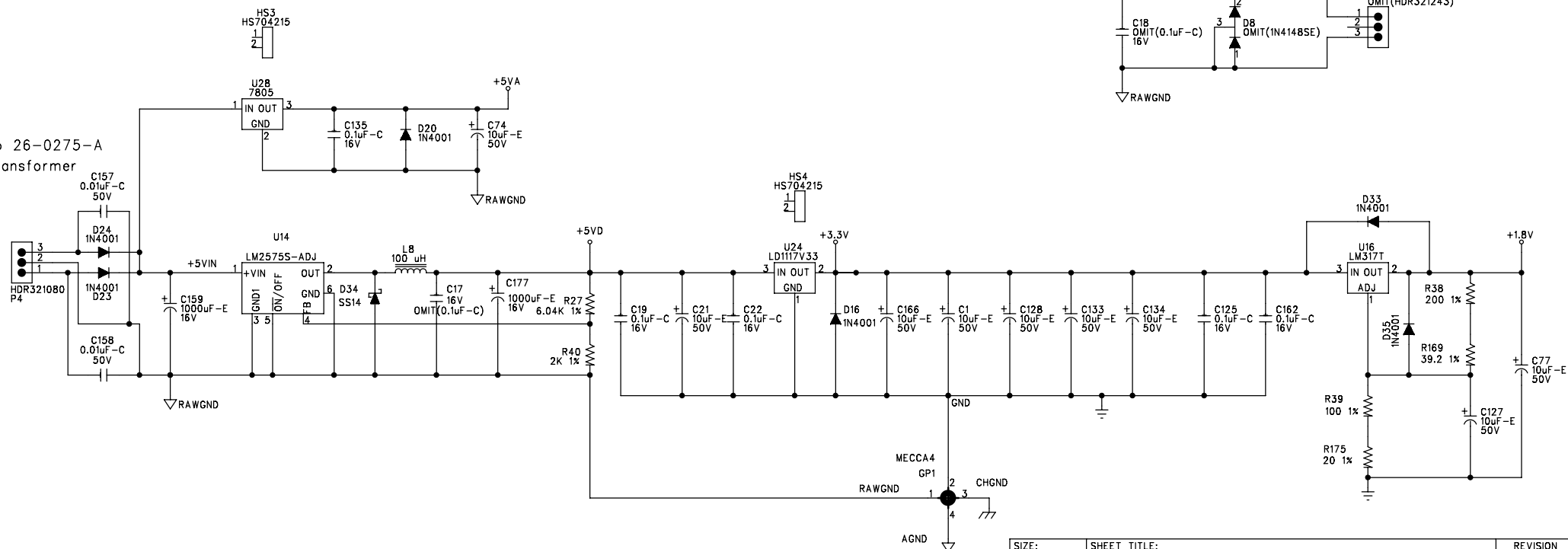








To 26-0275-A  
Transformer



SIZE: A	SHEET TITLE: POWER SUPPLY		REVISION G2
DATE: 02-05-07	DRAWING NO: 05-1790	SHEET: 15 OF 15	

Qty	Reference	HMG#	Description	Audit	Schematic Part	PCB Decal
1	P6	NON-PART	PAD ARRAY EDGE CONN 20 COND 0.1"LS	DWB122	20PIN-FINGERS	20PIN-FINGERS
1	PCB1	80-1790	PCB 80-1790 dbx DRIVERACK PA	PT2142	80XXXXYY	BARCODE
14	A7-18 A20 A22	NON-PART	NON-PART, PCB ONLY, BREAKOFF PART	PT1481	BRKOFF	BRKOFF
12	C6-7 C28 C30 C35-36 C41-42 C47-48 C189-190	56-0000	CAP 0.001uF FILM PTR 100V 5% AF TA	PT1629	C0.001UF100JR	RFCC200
1	C83	56-0005	CAP 0.0068uF FILM PTR 100V 5% RF TA	PT1307	C0.0068UF100JR	RFDC200
4	C69 C89 C157-158	62-1311	CAP 0.01uF CER 50V 20% Y5V 0603 TA	PT2665	C0.01UC50M0603	0603
2	C52 C97	56-0033	CAP 0.027uF FILM PTR 100V 5% RF TA	PT1282	C0.027UF100JR	RFEF200
91	C3-4 C19-20 C22 C27 C34 C40 C57-68 C71-72 C75-76 C78 C90-91 C105-108 C110 C113-114 C116-119 C122 C125-126 C129-132 C135 C160-164 C168-169 C171-176 C181-188 C192 C196-210 C212-214 C216 C240 C242-244	62-1310	CAP 0.1uF CER 16V 20% Y5V 0603 TA	PT2696	C0.1UC16M0603	0603
3	C17-18 C191	OMIT	OMIT CAP 0.1uF CER 16V 20% Y5V 0603 TA (62-1310)	PT2711	C0.1UC16M06030	0603
2	C87-88	56-0012	CAP 0.1uF FILM MTPT 50V 5% RF TA	PT1200	C0.1UF50JR	RFEC200
2	C215 C217	62-3209	CAP 0.22uF CER 50V 10% X7R 1206 TA	PT2271	C0.22UC50K1206	1206
4	C226-229	62-1308	CAP 1000pF CER 50V 20% Y5V 0603 TA	PT2651	C1000PC50M0603	0603
2	C159 C177	60-0064	CAP 1000uF EL 16V 20% GP 10x17R 5LL TA	PT1334	C1000UE16MR	REM200P
2	C92-93	60-1073	CAP 1000uF EL 35V 20% HT 13x25R 5LL BK	PT1971	C1000UE35MR1	REQ200P
4	C5 C79-81	60-0201	CAP 100uF EL 16V 20% GP 6x8R 5LS TA	PT1378	C100UE16MR	REG200P
19	C1 C21 C74 C77 C94-95 C127-128 C133-134 C166 C170	60-1074	CAP 10uF EL 50V 20% HT 5x11R 5LS TA	PT1972	C10UE50MR1	REE200P



	C193-195	C211							
	C218-219	C241							
20	C2 C11-12 C23-26	62-1304	CAP 120pF CER 50V 5% NPO 0603 TA			PT2655	C120PC50J0603	0603	
	C56 C73 C82 C84 C96								
	C98-100 C111-112								
	C136-138								
8	C123-124 C155-156	62-1300	CAP 15pF CER 50V 5% NPO 0603 TA			PT2659	C15PC50J0603	0603	
	C222-225								
1	C70	60-0010	CAP 22uF EL 35V 20% GP 5x11R 5LS TA			PT2110	C22UE35MR	REE200P	
10	C14 C33 C39 C45 C51	60-0402	CAP 22uF ELNP 25V 20% GP 6x11R 5LS TA			PT1084	C22UN25MR	REG200	
	C147 C149 C152 C154								
	C165								
8	C53 C109 C143 C145	62-1306	CAP 330pF CER 50V 10% X7R 0603 TA			PT2653	C330PC50K0603	0603	
	C148 C150-151 C153								
8	C9-10 C15-16 C29	62-1307	CAP 470pF CER 50V 10% X7R 0603 TA			PT2652	C470PC50K0603	0603	
	C85-86 C115								
1	C140	62-1302	CAP 47pF CER 50V 5% NPO 0603 TA			PT2657	C47PC50J0603	0603	
4	C54-55 C101-102	60-0054-01	CAP 47uF EL 25V 20% GP 5x11R 5LS TA			PT2959	C47UE25MR1	REE200P	
12	C8 C13 C31-32	62-1303	CAP 68pF CER 50V 5% NPO 0603 TA			PT2656	C68PC50J0603	0603	
	C37-38 C43-44								
	C49-50 C121 C146								
12	D16 D20 D23-28	70-0000	DIO 1N4001 50V 1 AMP AMMO TA			PT1003	D1N4001-R	RDB200	
	D30-31 D33 D35								
25	D1-7 D9 D13-15	70-0113	DIO MMBD4148SE DUAL 75V 600mA SOT-23 TA			PT1326	D1N4148SE-S	SOT-23	
	D21-22 D37-48								
1	D8	OMIT	OMIT DIO MMBD4148SE DUAL 75V 600mA SOT-23 TA (70-0113)			PT1327	D1N4148SE-S-0	SOT-23	
1	D34	70-0147	DIO SCHOTTKY 1A SS14 DO-214AC/SMA			PT1877	DSS14S	DO-214AC/SMA	
8	A4-5 A19 A21 A23-26	NON-PART	NON-PART FIDUCIAL TARGET FOR AUTO INSERTION			PT2904	FIDUCIAL-AI	FIDUCIAL-AI	
6	A1-3 A6 A27-28	NON-PART	NON-PART FIDUCIAL TARGET FOR AI AND XRAY			PT2796	FIDUCIAL-XRAY	FIDUCIAL-XRAY	
2	J7 J9	32-0172	HCN CONN 30 PIN .5 MM CNTS 1X30 FML RA			PT2724	HCN320172	HC320172	
1	J12	OMIT	OMIT HCN CONN 20 PIN FEM VRT MNT SMT (32-0176)			PT3064	HCN320176-0	HC102V079050FS	
1	P3	32-1055	HDR 20 PIN 0.1" SPC 2 X 10 VERT MALE			PT1340	HDR321055	HC102	
1	P1-A	OMIT	OMIT HDR 3 PIN 0.1" SPC 1 X 3 VERT MALE CUT FROM 14 PIN (32-1067)			PT2703	HDR321067-0	HC31	
1	P2	OMIT	OMIT HDR 5 PIN 0.1" SPC 1 X 5 VERT MALE			PT2788	HDR321074-0	HC51M	

2	P4-5	32-1080	HDR 3 PIN 0.1" SPC 1 X 3 LCK VERT MALE	PT1073 HDR321080	HC3L
1	P21	OMIT	OMIT HDR 14 PIN 0.1" SPC 2 X 7 VERT MALE (32-1083)	PT2127 HDR321083-0	HC72
1	H1	OMIT	OMIT, HDR, 5 PN, 0.079" SP, 1 X 5, 0.020" PS LK SD PO VT MA (32-1101 )	PT1825 HDR321101-0	HC579LSPM
1	P8	OMIT	OMIT HDR 3 PIN .098 SPC 3X1 SHROUDED VERTICAL MT. (32-1243)	PT2795 HDR321243-0	HC31V98SP
4	HS1-4	70-4215	HEATSINK TO-220 VERT	PT1339 HS704215	HS704215
3	J3 J8 J10	32-0206	CON JACK XLR R/A PCA A SERIES	PT1219 J320206	XLRF-1
1	LBL1	30-0121	LABEL BARCODE AUTOINSERTABLE RAW	PT2790 LABEL300121	LABEL300121
39	DS1-2 DS5 DS7-8 DS10-11 DS15-18 DS24-28 DS34-36 DS41-48 DS54-55 DS57-58 DS63-64 DS66-67 DS72-75	70-3207	LED GREEN D1206 T&R	PT1902 LEDG703207	D1206
10	DS9 DS14 DS20 DS30-31 DS39 DS50 DS60 DS69 DS78	70-3209	LED RED D1206 T&R	PT1901 LEDR703209	D1206
19	DS3-4 DS6 DS12-13 DS19 DS23 DS29 DS33 DS38 DS40 DS49 DS51 DS59 DS61 DS68 DS70 DS76 DS79	70-3208	LED YEL 1206 TA	PT1900 LEDY703208	D1206
9	L1 L3-4 L6 L11-12 L16-18	26-0000	IND FBD 600 OHM @ 100Hz 200mA 0603 TA	PT2728 LFB260000	0603
12	L2 L9-10 L13-14 L19-25	26-0001	IND FBD 2.5K OHM @ 100Hz, 50mA 0603 TA	PT2729 LFB260001	0603
1	R150	26-0217	IND FBD 2.5K OHM @ 70MHz 0805 TA	PT1261 LFB260217	0805
1	L8	26-0002	IND PWR 100uH 3A	PT2754 LI 260002	UP3B
2	LP1-2	NON-PART	NON-PART 6 POS NOT INSTALLED UNTIL MECHANICAL ASSY(LIGHT PIPE)	PT1967 LP242015-6	LP242015-6
6	LP3-8	NON-PART	NON-PART 8 POS NOT INSTALLED UNTIL MECHANICAL ASSY(LIGHT PIPE)	PT1968 LP242015-8	LP242015-8
1	GP1	NON-PART	NON-PART MECCA GND/PWR TIE POINT 4 POS	PT2482 MECCA4	MECCA4
6	MH3-6 MH8 MH12	NON-PART	NON-PART, MOUNTING HOLE, 0.130" NON-PLATED, #4	PT1242 MH130	MH130
2	MH7 MP2	NON-PART	NON-PART, MOUNTING HOLE, 0.156" NON-PLATED, #6	PT1044 MH156	MH156
1	MH9	NON-PART	NON-PART	DB105 MH156-NOKEEPOUT	
MH156-NOKEEPOUT					
2	MH1-2	NON-PART	NON-PART TOOLING PIN HOLE 156MIL HOLE	PT2794 MH156-TOOL	MH156-TOOL

1	MH10	NON-PART	NON-PART MECHANICAL PLATED HOLE 225 PAD 130 HOLE #4	PT1998 MP225H130	MP225H130
4	MP1 MP3-5	NON-PART	NON-PART, MECHANICAL PLATED HOLE, 300 PAD, 156 HOLE, #6	PT1045 MP300H156	MP300H156
6	J1-2 J4-6 J11	32-0204	CON PLUG XLR R/A PCA A SERIES	PT1218 P320204	XLRM-1
10	Q2-3 Q8-15	70-1058	XSTR 2N3904 NPN SOT-23 TA	PT1203 Q2N3904-S	SOT-23
1	Q1	70-1035	XSTR 2N44402 PNP SIGNAL TO-92 TA	PT1527 Q2N4402	T092(EBC) -V
21	L15 L26-30 R7 R11	50-1300	RES 0 5% 1/16W SM 0603 TA	PT2508 R0-B5-0603	0603
	R13 R35 R37 R91				
	R200 R222 R277 R289				
	R335 R338-339				
	R341-342				
6	R8 R10 R12 R58-59	OMIT	OMIT RES 0 5% 1/16W SM 0603 TA (50-1300)	PT2509 R0-B5-06030	0603
	R295				
7	R157-158 R167-168	50-0317	RES 0 5% 1/4W CF RR TA	PT1008 R0-E5-R	RRA200
	R170-172				
1	R160	OMIT	OMIT RES 0 5% 1/4W CF RR TA (50-0317)	PT1596 R0-E5-R0	RRA200
2	R163-164	52-1340	RES 10.7K 1% 1/16W SM 0603 TA	PT2592 R10.7KB1-0603	0603
5	R39 R54 R183-184	52-1304	RES 100 1% 1/16W SM 0603 TA	PT2512 R100-B1-0603	0603
	R312				
4	R103-104 R253-254	52-1360	RES 100K 1% 1/16W SM 0603 TA	PT2613 R100KB1-0603	0603
43	R1-4 R6 R14 R16 R20	52-1338	RES 10K 1% 1/16W SM 0603 TA	PT2584 R10KB1-0603	0603
	R23 R28-29 R36 R49				
	R56 R112 R118 R124				
	R130 R136 R143 R159				
	R185-188 R192-193				
	R197 R199 R201 R209				
	R212-213 R218-219				
	R223 R236 R244 R266				
	R334 R340 R383-384				
12	R34 R57 R64-65	52-1342	RES 13.3K 1% 1/16W SM 0603 TA	PT2594 R13.3KB1-0603	0603
	R72-73 R80-81				
	R88-89 R281-282				
1	R267	52-1362	RES 150K 1% 1/16W SM 0603 TA	PT2615 R150KB1-0603	0603
1	R153	52-1344	RES 15K 1% 1/16W SM 0603 TA	PT2596 R15KB1-0603	0603
4	R92 R149 R233 R235	52-1305	RES 169 1% 1/16W SM 0603 TA	PT2513 R169-B1-0603	0603

11	R156 R173-174 R210-211 R269-274	52-1313	RES 1K 1% 1/16W SM 0603 TA	PT2550 R1KB1-0603	0603
1	R336	52-1372	RES 1M 1% 1/16W SM 0603 TA	PT2625 R1MB1-0603	0603
4	R74 R90 R226 R232	52-1317	RES 2. 21K 1% 1/16W SM 0603 TA	PT2555 R2. 21KB1-0603	0603
10	R24 R66 R83 R109 R121 R133 R146 R190 R231 R247	52-1319	RES 2. 67K 1% 1/16W SM 0603 TA	PT2557 R2. 67KB1-0603	0603
16	R38 R43 R176-182 R189 R191 R194-196 R332-333	52-1306	RES 200 1% 1/16W SM 0603 TA	PT2514 R200-B1-0603	0603
2	R175 R337	52-1300	RES 20 1% 1/16W SM 0603 TA	PT2507 R20-B1-0603	0603
8	R46-48 R94-96 R224 R228	52-1346	RES 20K 1% 1/16W SM 0603 TA	PT2598 R20KB1-0603	0603
1	R255	52-1364	RES 221K 1% 1/16W SM 0603 TA	PT2617 R221KB1-0603	0603
13	R40 R75 R82 R98-100 R154-155 R221 R229-230 R241 R262	52-1316	RES 2K 1% 1/16W SM 0603 TA	PT2553 R2KB1-0603	0603
12	R5 R26 R50 R110 R113 R122 R125 R134 R137 R147 R237 R248	52-1322	RES 3. 16K 1% 1/16W SM 0603 TA	PT2560 R3. 16KB1-0603	0603
6	R41 R111 R123 R135 R148 R249	52-1323	RES 3. 24K 1% 1/16W SM 0603 TA	PT2561 R3. 24KB1-0603	0603
26	R25 R31-33 R60-63 R68-71 R76-79 R84-87 R105 R165 R321-322 R357-358	52-1324	RES 3. 32K 1% 1/16W SM 0603 TA	PT2562 R3. 32KB1-0603	0603
50	R9 R67 R161-162 R203-204 R234 R242 R251-252 R256-257 R259-260 R264-265 R279-280 R283-284 R287-288 R291-294 R297-300 R302-305 R307-310 R313-316 R318-320 R323	52-1307	RES 332 1% 1/16W SM 0603 TA	PT2543 R332-B1-0603	0603

	R325-328							
6	R101-102 R152 R261	50-1325	RES 33K 5% 1/16W SM 0603 TA		PT2589 R33KB5-0603	0603		
	R263 R275							
1	R169	52-1301	RES 39.2 1% 1/16W SM 0603 TA		PT2515 R39.2-B1-0603	0603		
1	R382	52-1355	RES 39.2K 1% 1/16W SM 0603 TA		PT2608 R39.2KB1-0603	0603		
13	R21-22 R107-108	52-1327	RES 4.53K 1% 1/16W SM 0603 TA		PT2565 R4.53KB1-0603	0603		
	R119-120 R131-132							
	R144-145 R245-246							
	R364							
1	R30	52-1368	RES 475K 1% 1/16W SM 0603 TA		PT2621 R475KB1-0603	0603		
2	R330-331	52-1356	RES 49.9K 1% 1/16W SM 0603 TA		PT2609 R49.9KB1-0603	0603		
17	R151 R198 R202 R250	52-1308	RES 499 1% 1/16W SM 0603 TA		PT2545 R499-B1-0603	0603		
	R258 R278 R285-286							
	R290 R296 R301 R306							
	R311 R317 R324 R329							
	R365							
6	R19 R55 R117 R129	52-1331	RES 5.76K 1% 1/16W SM 0603 TA		PT2576 R5.76KB1-0603	0603		
	R142 R243							
4	R97 R141 R225 R227	52-1357	RES 57.6K 1% 1/16W SM 0603 TA		PT2610 R57.6KB1-0603	0603		
11	R15 R27 R42 R44-45	52-1332	RES 6.04K 1% 1/16W SM 0603 TA		PT2577 R6.04KB1-0603	0603		
	R51 R93 R114 R126							
	R138 R238							
12	R17-18 R52-53	52-1303	RES 60.4 1% 1/16W SM 0603 TA		PT2511 R60.4-B1-0603	0603		
	R115-116 R127-128							
	R139-140 R239-240							
1	R268	52-1358	RES 63.4K 1% 1/16W SM 0603 TA		PT2611 R63.4KB1-0603	0603		
1	R220	52-1311	RES 681 1% 1/16W SM 0603 TA		PT2548 R681-B1-0603	0603		
9	R205-208 R214-217	52-1335	RES 7.5K 1% 1/16W SM 0603 TA		PT2581 R7.5KB1-0603	0603		
	R276							
2	R106 R166	52-1336	RES 8.06K 1% 1/16W SM 0603 TA		PT2582 R8.06KB1-0603	0603		
2	SC14-15	34-0125	SWI TCH CAP BLACK ROUND		PT1354 SC340125	SC340125-FPE		
1	SC13	34-0198-C	SWI TCH CAP LIGHT PIPE SNGL LED HORZ		PT2504 SC340198C	SC340198C		
12	SC1-12	34-0199-A	SWI TCH CAP dbx LIGHTED		PT2024 SC340199A	PCBNULL		
1	SW2	44-0050	SWI TCH DPDT MINI IN-OUT 6 PIN E-SWI TCH		PT1256 SW440050	SW440050		

2	SW1 SW16	44-0051	SWITCH 4PDT MINI IN-OUT 12 PIN E-SWITCH	PT1257 SW440051	SW440051
1	SW15	44-0119	SWITCH ENCODER 20mm D-SHAFT 30 POS W/SW VERT MNT	PT1890 SW440119	SW440119
12	SW3-7 SW9-14 SW17	44-0185	SWITCH SPST LITE TOUCH MINI W/ PROJECTED PLUNGER SMT	PT1962 SW440185	SW4PTACT-3
7	TP1-2 TP4 TP8-10 TP12	NON-PART	NON-PART, TEST POINT, ENGINEERING PROBE POINT	PT1653 TESTPOINT	TESTPOINTSM
1	U7	72-0046	IC 25AA640 64K SERIAL EEPROM TA	PT2774 U25AA260	S08
1	U5	72-6318	IC 32K x 8 SRAM 15ns SOJ28	PT2294 U32K8S15-J	SOJ28-300
6	U2 U33 U36 U38 U42 U51	72-1439	IC, 5532MD, DUAL BIPOLAR OPAMP, S08-200	PT1306 U5532MD-S	S08-200
2	U25 U48	72-5426	IC, 74AC04, HEX INVERTER, S014, T&R	PT1325 U74AC04-S	S014
1	U21	72-5437	IC 74VHC273 FLIP-FLOP OCTAL-D S020W T&R	PT1909 U74VHC273-S	S020W
1	U17	72-0045	IC 74VHC373 OCTAL LATCH S020W	PT2771 U74VHC373-S	S020W
1	U44	72-0044	IC 74VHC4040 12 BIT RIPPLE COUNTER S016	PT2759 U74VHC4040-S	S016
1	U28	70-4014	V-REG, 7805, +5V, 1.5 AMP, TO-220	PT1591 U7805	T0220(IG0)-V
1	U10	70-4123	V-REG, 7815, +15V, 1 AMP, TO-220	PT1592 U7815	T0220(IG0)-V
1	U20	72-6316	IC 78L32P-24 8 BIT MICROCONTROLLER 3.3V	PT2316 U78L32P-24	PLCC-44
1	U12	70-4124	V-REG, 7915, -15V, 1 AMP, TO-220	PT1594 U7915	T0220(GI0)-V
1	U11	72-1485	IC AK4356 192kHz 24 BIT 6 CHANNEL DAC	PT2717 UAK4356-Q	QFP44-10X10
1	U26	72-1266	IC, AK5383, 96 kHz, DUAL 24BIT ADC, S028W	PT1557 UAK5383-S	S028W
1	U1	72-6305	IC DSP56367 DSP 150MHZ QFP144-20X20	PT2452 UDSP56367-Q	QFP144-20X20
1	U24	70-4021	V-REG, LD1117V33, +3.3V, 0.8 AMP, TO-220, BULK	PT1795 ULD1117V33	T0220(G01)-V
1	U14	70-0063	V-REG LM2575S-ADJ SWITCHING REG 1A TO-263(5)	PT2739 ULM2575S-ADJ	TO-263(5)
1	U16	70-4007	V-REG, LM317T, ADJ REG, 1.5 AMP, TO-220	PT1785 ULM317T	T0220(A01)-V
2	U4 U18	72-5434	IC NC7SZ125 TINYLOGIC BUFFER SOT23-5 TA	PT1881 UNC7SZ125-S	SOT23-5
1	U3	72-6308	IC NCP304 VOLTAGE DETECTOR SC-82AB	PT2393 UNCP304	SC-82AB
11	U8-9 U15 U19 U22-23 U27 U60-62 U70	72-1480	IC NJM4580 DUAL OP-AMP S08	PT1374 UNJM4580-S	S08
1	U13	72-0042-00V1	IC CPLD ispLSI2064VE dbx Driverack PA V1	PT2785 UP720042	QFP100-14X14
1	U6	72-5539-03V2	IC AM29LV040B 512K x 8 FLASH MEMORY <Enter Product Name> Vy	PT2292 UP725539	PLCC/R-32
1	Y3	76-0202	XTAL 24.000MHz MTL CAN SM TA	PT1928 Y24.000M760202	XTAL2-V
1	X7	76-0006	XTAL 24.576MHz CX16F/CS49G SM TA	PT2919 Y24.576M760006	XTAL2-V



A	PRODUCTION RELEASE	31024	DWB	10-28-05
REV	DESCRIPTION	ECN #	INIT	DATE
REVISION HISTORY				
<div>dbx Professional Products</div> <div>8760 South Sandy Parkway Sandy Utah 84070</div>				
<div>TITLE:</div> <div>DISPALY ADAPTER BOARD DRIVERACK PRODUCT LINE</div>				
DESIGNER: DAVID W. BYBEE		ENGINEER: DAVID W. BYBEE		
SIZE: A	DRAWING NO: 05-0000-A0			REVISION A0
DATE: 10-28-05	FILENAME: 050000A0.SCH		SHEET: 1 OF 1	

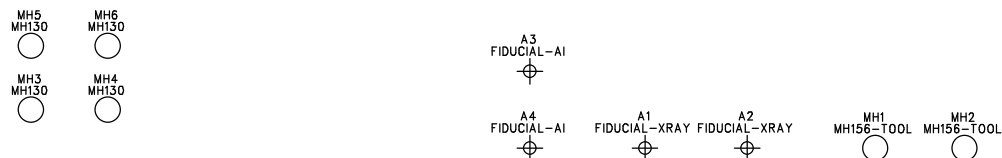
Bill Of Materials for 050000A0.sch on Mon Oct 31 14:58:39 2005

Qty	Reference	HMG#	Description	Audit	Schematic Part	PCB Decal
1	P6	NON-PART	PAD ARRAY EDGE CONN 20 COND 0.1"LS	DWB122	20PIN-FINGERS	20PIN-FINGERS
1	PCB1	80-0000	PCB 80-0000 dbx Display Adapter	PT2142	80XXXXYY	BARCODE
1	A2	NON-PART	NON-PART FIDUCIAL TARGET FOR AUTO INSERTION	PT2904	FIDUCIAL-AI	FIDUCIAL-AI
1	A1	NON-PART	NON-PART FIDUCIAL TARGET FOR XRAY	PT2905	FIDUCIAL-XRAY	FIDUCIAL-XRAY
1	J12	32-0176	HCN CONN 20 PIN FEM VRT MNT SMT	PT2773	HCN320176	HC102V079050FS
1	MH6	NON-PART	NON-PART, MOUNTING HOLE, 0.130" NON-PLATED, #4	PT1242	MH130	MH130
1	MH1	NON-PART	NON-PART	DB105	MH156-NOKEEPOUT	MH156-NOKEEPOUT



PA3	20PIN	EDGE	CONN	J10	HCN320178
1	●	1	HADR00	1	○
2	●	2	LCN_CST	2	○
3	●	3	LCN_CS0	3	○
4	●	4	L1	4	○
5	●	5	2.5K 70MHz	5	○
6	●	6	OSCILLATOR	6	○
7	●	7	HOST_RD	7	○
8	●	8	HOST_WR	8	○
9	●	9	GROUND	9	○
10	●	10	HADR00	10	○
11	●	11	HADR01	11	○
12	●	12	HADR02	12	○
13	●	13	HADR03	13	○
14	●	14	HADR04	14	○
15	●	15	HADR05	15	○
16	●	16	HADR06	16	○
17	●	17	HADR07	17	○
18	●	18	L2	18	○
19	●	19	2.5K 70MHz	19	○
20	●	20	CONTRAST	20	○
			LED_A		
			LED_B		

- 1 - HOST ADDRESS 0  
2 - LCD\_CS1  
3 - LCD\_CS0  
4 - 2kHz OSCILLATOR  
5 - HOST\_RD  
6 - HOST\_WR  
7 - DIGITAL GROUND  
8-15 - DATA 0-7  
16 - +5V  
17 - RESET  
18 - CONTRAST  
19 - LED +V (5V)  
20 - LED -V



Bill Of Materials for 050079C0.sch on Fri Jun 23 10:03:21 2006

Qty	Reference	HMG#	Description	Audit	Schematic Part	PCB Decal
1	PA3	NON-PART	PAD ARRAY EDGE CONN 20 COND 0.1"LS	PT3273	20PIN-FINGERS	20PIN-FINGERS
1	PCB1	80-0079	PCB 80-0079 LCD ADAPTER BOARD	PT2142	80XXXXYY	BARCODE
2	A3-4	NON-PART	NON-PART FIDUCIAL TARGET FOR AUTO INSERTION	PT2904	FIDUCIAL-AI	FIDUCIAL-AI
2	A1-2	NON-PART	NON-PART FIDUCIAL TARGET FOR XRAY	PT2905	FIDUCIAL-XRAY	FIDUCIAL-XRAY
1	J10	32-0176	HCN CONN 20 PIN FEM VRT MNT SMT	PT2773	HCN320176	HC102V079050FS
1	LBL1	30-0121	LABEL BARCODE AUTOINSERTABLE RAW	PT2790	LABEL300121	LABEL300121
2	L1-2	26-0217	IND FBD 2.5K OHM @ 70MHz 0805 TA	PT1261	LFB260217	0805
4	MH3-6	NON-PART	NON-PART MOUNTING HOLE 0.130" NON-PLATED #4	PT1242	MH130	MH130
2	MH1-2	NON-PART	NON-PART TOOLING PIN HOLE 156MIL HOLE	PT2794	MH156-TOOL	MH156-TOOL