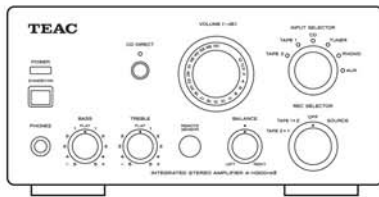


# TEAC



## SERVICE MANUAL

# A-H300mkIII

Integrated Stereo Amplifier

For Europe

### CONTENTS

1 SPECIFICATIONS .....	2
2 IC PIN FUNCTIONS .....	3
3 EXPLODED VIEWS AND PARTS LIST .....	4
4 PC BOARDS AND PARTS LIST .....	6

### NOTES

- PC boards shown are viewed from parts side.
- The parts with no reference number or no parts number in the exploded views are not supplied.
- As regards the resistors and capacitors, refer to the circuit diagrams contained in this manual.
- ⚠ Parts marked with this sign are safety critical components. They must be replaced with identical components - refer to the appropriate parts list and ensure exact replacement.

## 1 SPECIFICATIONS

### Amplifier Section

Power output . . . . . 45 W + 45 W (6 Ω, 1 kHz, 0.5%)  
Total Harmonic Distortion . . . . . 0.5% (1 kHz, 6 Ω, 45 W)  
S/N Ratio . . . . . PHONO: 70 dB (IHF-A)  
                                AUX, CD, TAPE, TUNER: 95 dB (IHF-A)  
                                CD direct: 95 dB (IHF-A)  
Input Sensitivity/Impedance. . PHONO: 4.0 mV ±0.8 mV/10 kΩ  
                                AUX, CD, TAPE, TUNER: 300 mV ±30 mV/10 kΩ  
Frequency Response . . . . . 5 Hz - 80 kHz  
Tone Control . . . . . BASS : ±10 dB (100 Hz)  
                                TREBLE : ±10 dB (10 kHz)

## General

<b>Power Requirement</b>	
Europe model . . . . .	AC 230 V, 50 Hz
U.S.A./Canada model. . . . .	AC 120 V, 60 Hz
Power Consumption . . . . .	85 W
Standby Power Consumption . . . . .	85 W
<b>AC Outlet (total 100 W max.)</b>	
Europe model. . . . .	unswitched x 1
U.S.A./Canada model . . . . .	unswitched x 2
<b>Dimensions (W x H x D) . . . . .</b>	
	215 x 312 x 110 mm (8-7/16" x 12-5/16" x 4-5/16")
Weight (Net) . . . . .	4.2 kg (9-1/4 lb)
Operating temperature. . . . .	+5°C - +35°C
Operating humidity . . . . .	5% to 85% (no condensation)
Storage temperature. . . . .	-20°C - +55°C

Standard Accessory . . . . . Remote Control Unit RC-957(Silver)  
RC-1091(Black)

Battery (AAA, R03, UM-4) x 2

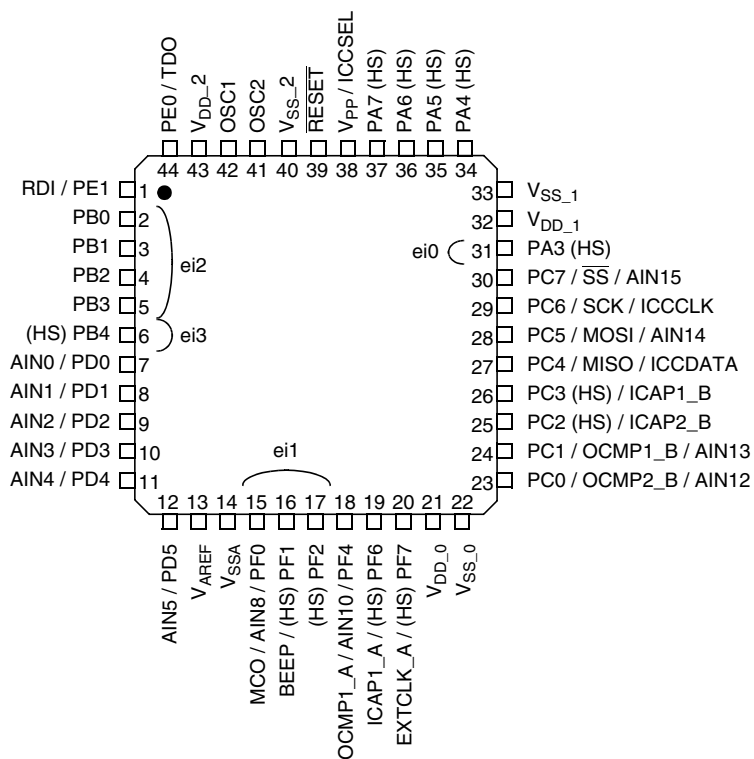
- Design and specifications are subject to change without notice.
- Weight and dimensions are approximate.
- Illustrations may differ slightly from production models.

## IC31 ST72F324VJ4T6 ( FLASH MEMORY )

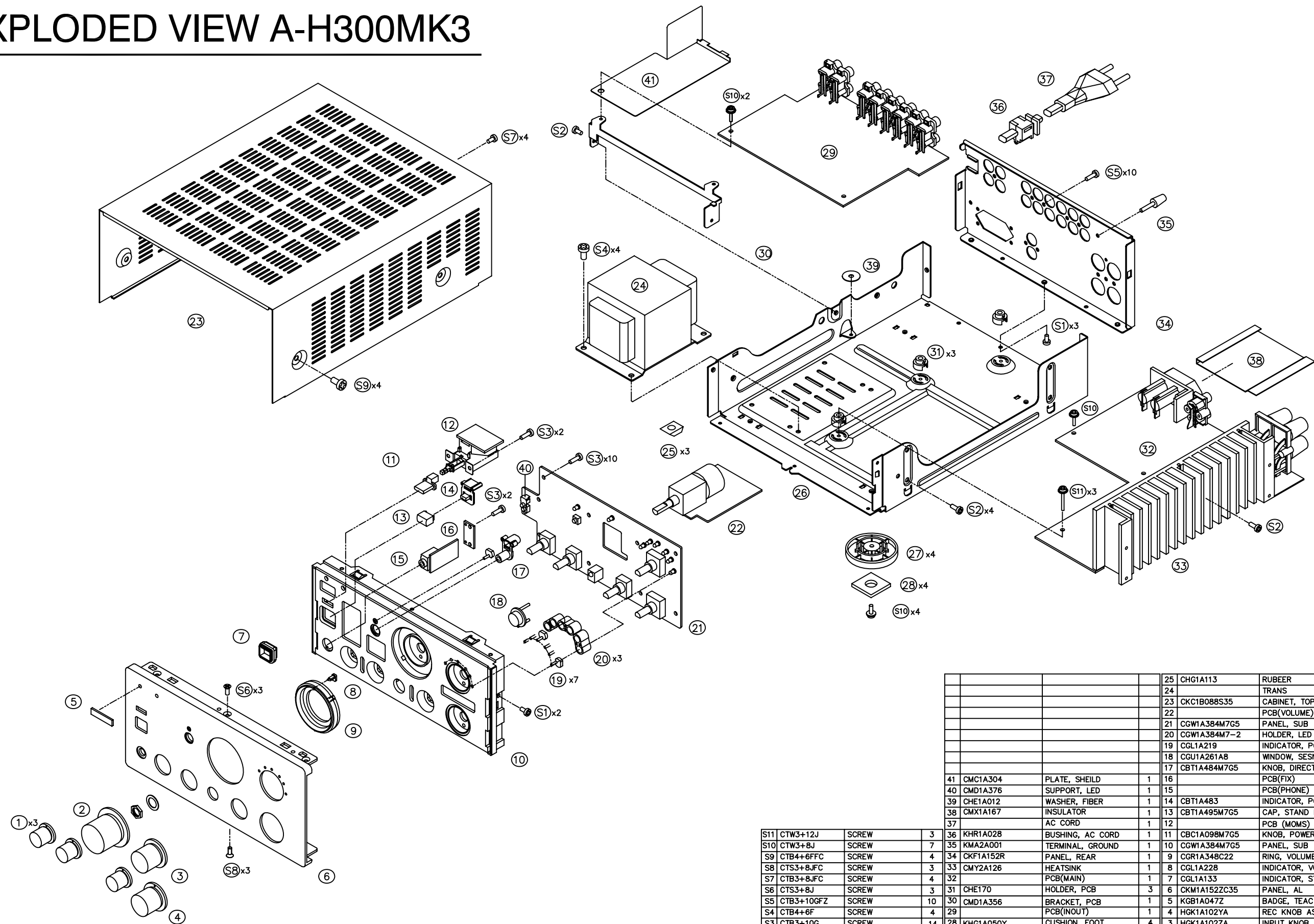
PIN No.	NAME	I/O	DESCRIPTION
1	PE1/RDI	–	GND
2	BACK_UP	I	BACK_UP Mode Control Port ("L")
3	PROTECT	I	PROTECT Input Port("L")
4	POWER_ON	O	Unit Turn On Control Port ("L")
5	BUS_DATA OUT	O	BUS DATA Output Port
6	BUS_DATA IN	I	BUS DATA Input Port
7	KEY_1	I	Key 1 Control Port
8	KEY_2	I	Key 2 Control Port
9	EN1(SCROLL_UP)	I	Scroll Up Control Port
10	EN2(SCROLL_DN)	I	Scroll Down Control Port
11	REC_SEL	I	REC_SELECT Input Port
12	PD4/AIN4	–	NC
13	VA REF		Analog Reference Votage (+5V) for ADC
14	VSSA		Analog GND Votage for ADC
15	REMOTE(EXT)	I	REMOTE Input Port
16	PF1(HS)/BEEP		NC
17	VOLUME_LED	O	VOLUME_LED Control Port ("L")
18	STANDBY_LED	O	STANDBY_LED Control Port ("L")
19	P_AMUTE	O	POWER AUDIO MUTE Control Port ("L")
20	P_FMUTE	O	POWER FUNCTION MUTE Control Port ("L")
21	VDD_0		Digital Main Supply Votage (+5V)
22	VSS_0		Digital GND Votage
23	VR_DOWN	O	VR_DOWN Control Port
24	VR_UP	O	VR_UP Control Port
25	CD_DIRECT_LED	O	CD_DIRECT_LED Control Port
26	PHONO_LED	O	PHONO_LED Control Port
27	CE2	I	Chip Enable"2" Control Port
28	DATA	I	Data Input Port
29	CLK	O	Clock Output Port
30	CE1	I	Chip Enable"1" Control Port
31	CD_LED	O	CD_LED Control Port
32	VDD_1		Power Supply Port (+5V)
33	VSS_1		Digital GND Voltage
34	TUNED_LED	O	Tuned_LED Control Port
35	AUX_LED	O	AUX_LED Control Port
36	TAPE2_LED	O	TAPE2_LED Control Port
37	TAPE1_LED	O	TAPE1_LED Control Port
38	VPP	–	Power Supply Port (+5V)
39	RESET	I	Reset Input Port ("L")
40	VSS_2		Digital GND Voltage
41	OSC2	O	Oscillator Output Port
42	OSC1	I	Oscillator Input Port
43	VDD_2		Digital Main Supply Voltage (+5V)
44	PE0/TDO		GND

## PIN DESCRIPTION (HVIST72F324J4T6)

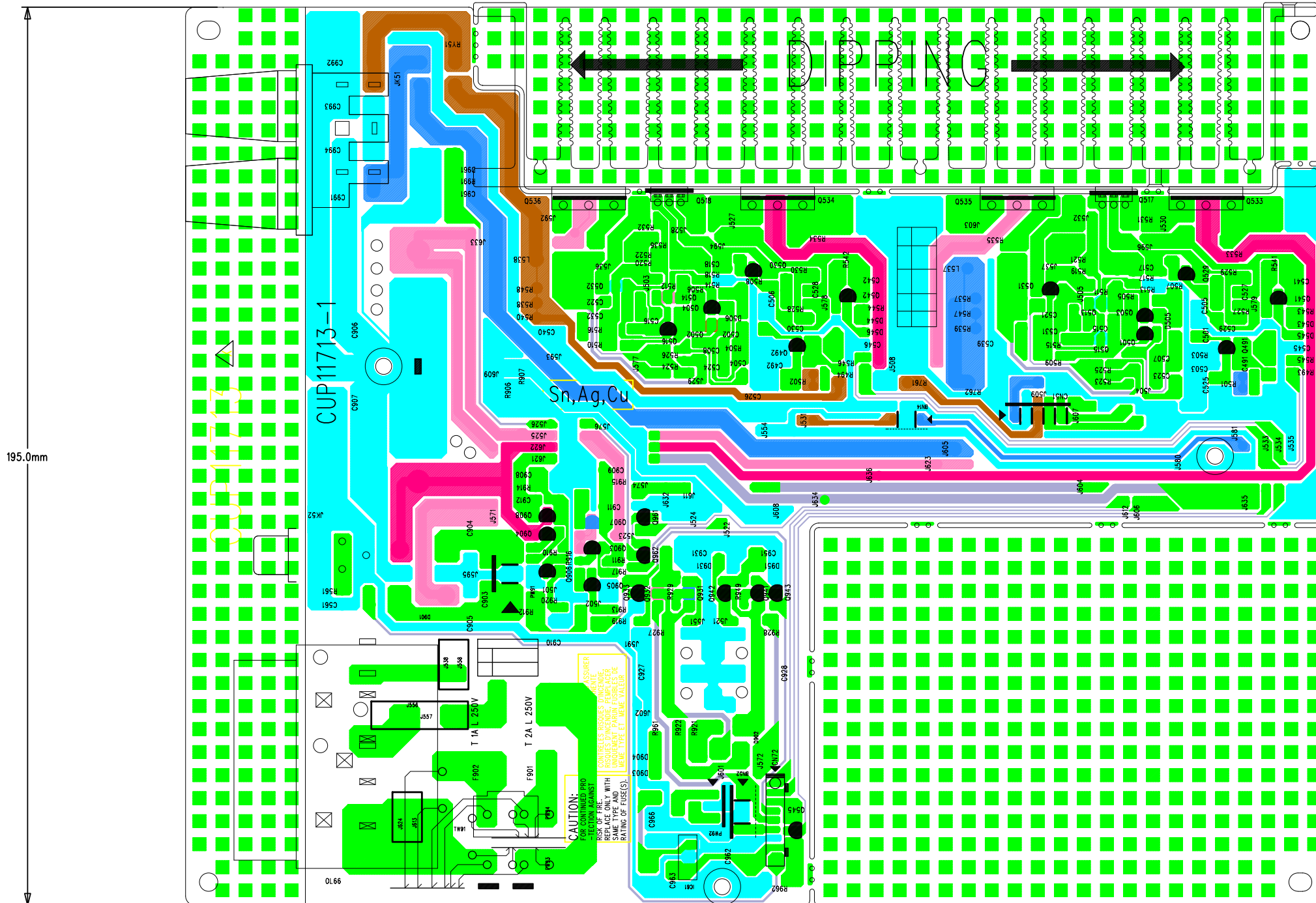
### 44-Pin TQFP Package Pinouts



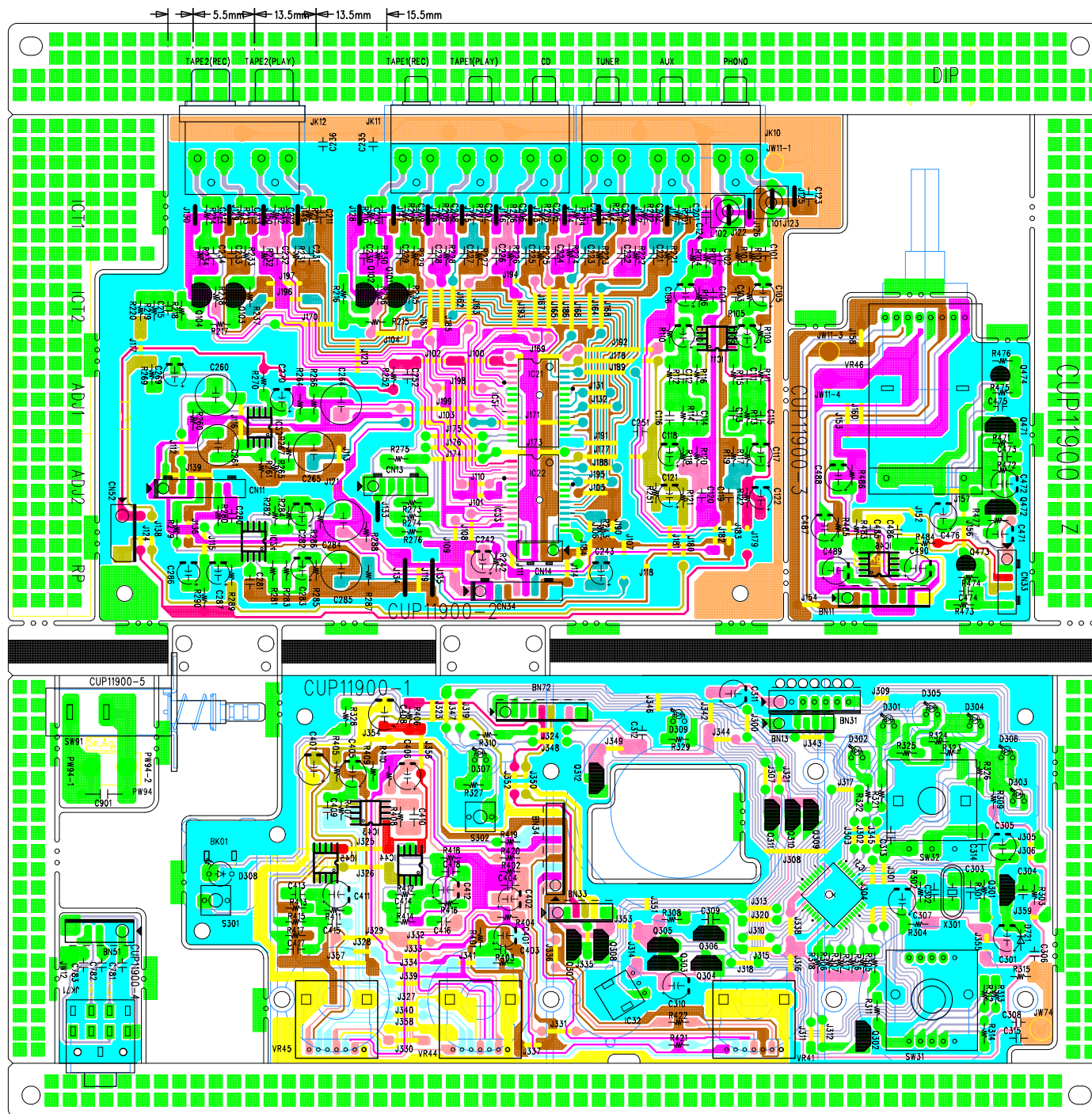
# EXPLODED VIEW A-H300MK3



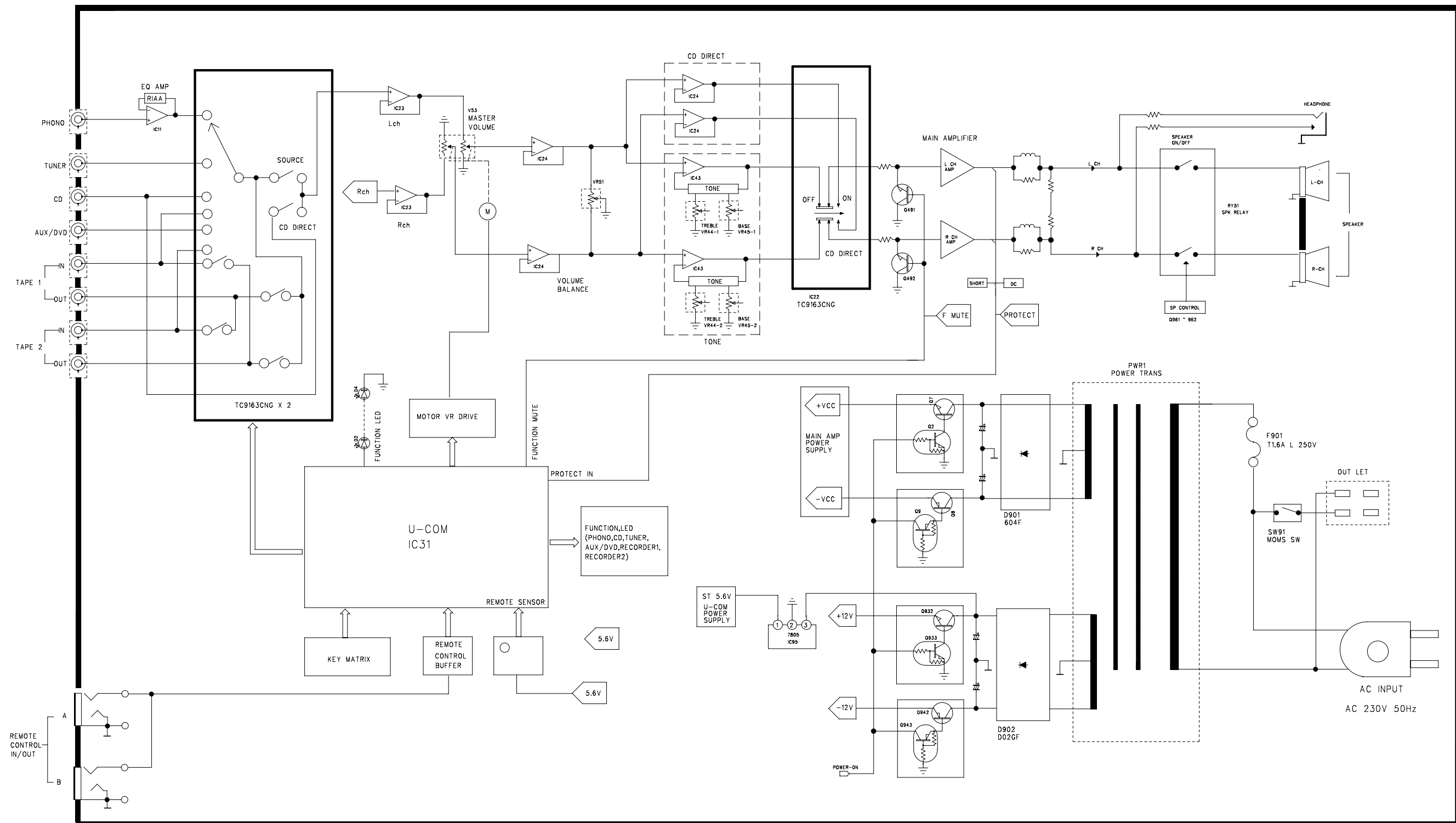
				25	CHG1A113	RUBEER	3
				24		TRANS	1
				23	CKC1B08S35	CABINET, TOP	1
				22		PCB(VOLUME)	1
				21	CGW1A384M7G5	PANEL, SUB	1
				20	CGW1A384M7-2	HOLDER, LED	3
				19	CGL1A219	INDICATOR, POWER	7
				18	CGU1A261A8	WINDOW, SESNSOR	1
				17	CBT1A484M7G5	KNOB, DIRECT	1
				16		PCB(FIX)	1
41	CMC1A304	PLATE, SHEILD	1	15		PCB(PHONE)	1
40	CMD1A376	SUPPORT, LED	1	14	CBT1A483	INDICATOR, POWER	1
39	CHE1A012	WASHER, FIBER	1	13	CBT1A495M7G5	CAP, STAND BY	1
38	CMX1A167	INSULATOR	1	12		PCB (MOMS)	1
37		AC CORD	1	11	CBC1A098M7G5	KNOB, POWER	1
36	KHR1A028	BUSHING, AC CORD	1	10	CGW1A384M7G5	PANEL, SUB	1
35	KMA2A001	TERMINAL, GROUND	1	9	CGR1A348C22	RING, VOLUME	1
34	CKF1A152R	PANEL, REAR	1	8	CGL1A228	INDICATOR, VOLUME	1
33	CMY2A126	HEATSINK	1	7	CGL1A133	INDICATOR, STAND BY	1
32		PCB(MAIN)	1	6	CKM1A152ZC35	PANEL, AL	1
31	CHE170	HOLDER, PCB	3	5	KGB1A047Z	BADGE, TEAC	1
30	CMD1A356	BRACKET, PCB	1	4	HGK1A102YA	REC KNOB ASS'Y	1
29		PCB(INOUT)	1	3	HGK1A102ZA	INPUT KNOB ASS'Y	1
28	KHG1A050Y	CUSHION, FOOT	4	2	HGK1A101ZA	VOLUME KNOB ASS'Y	1
27	CKL2A055H45	FOOT	4	1	HGK1A103ZA	ROTARY KNOB ASS'Y	3
26	CUA1A157	CHASSIS, BOTTOM	1				
S11	CTW3+12J	SCREW	3				
S10	CTW3+8J	SCREW	7				
S9	CTB4+6FFC	SCREW	4				
S8	CTS3+8JFC	SCREW	3				
S7	CTB3+8JFC	SCREW	4				
S6	CTS3+8J	SCREW	3				
S5	CTB3+10GFZ	SCREW	10				
S4	CTB4+6F	SCREW	4				
S3	CTB3+10G	SCREW	14				
S2	CTB3+8J	SCREW	6				
S1	CTB3+6J	SCREW	5				
NO.	PARTS NO.	DESCRIPTION	Q'TY	NO.	PARTS NO.	DESCRIPTION	Q'TY





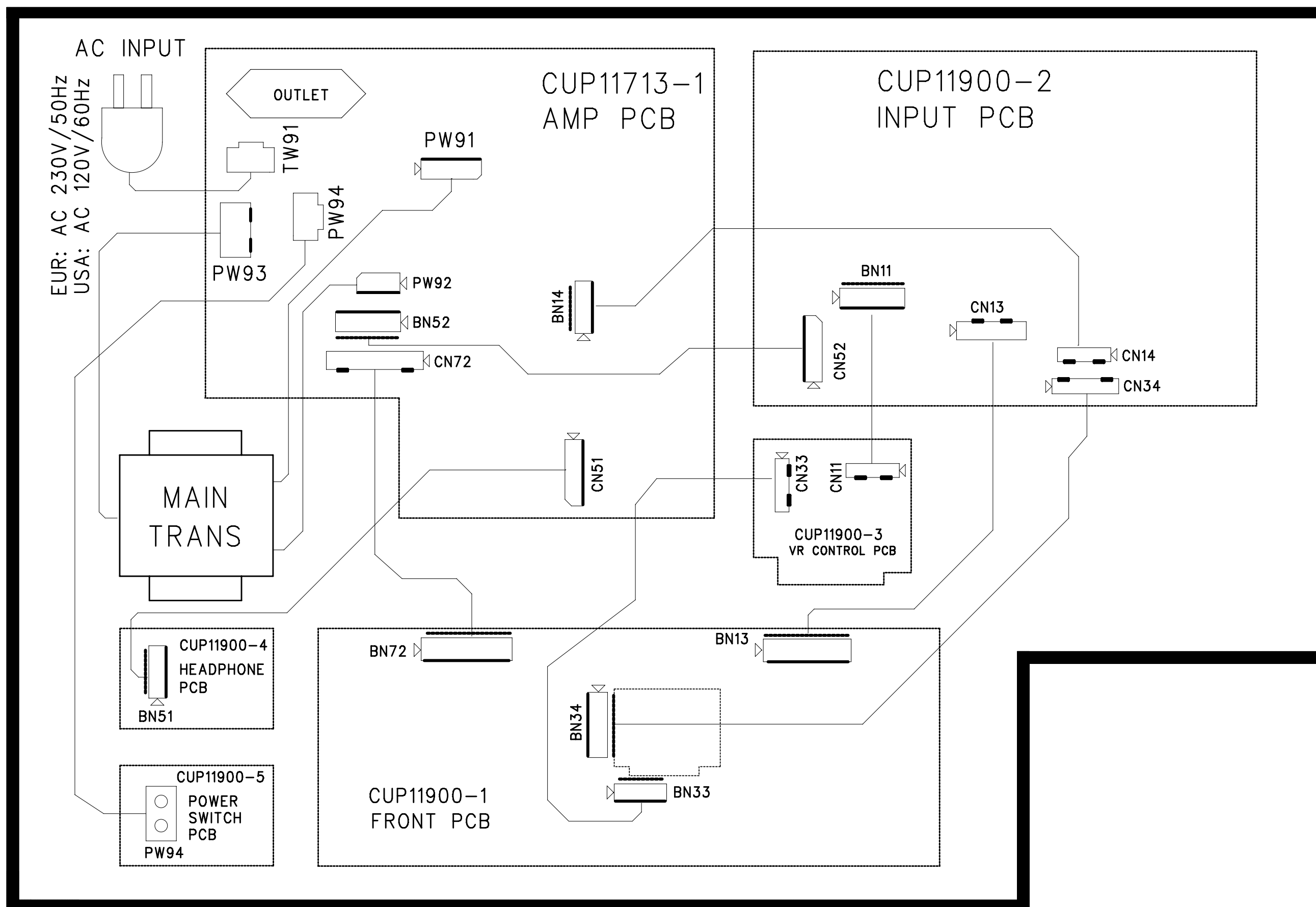


## A-H300MK3 BLOCK DIAGRAM

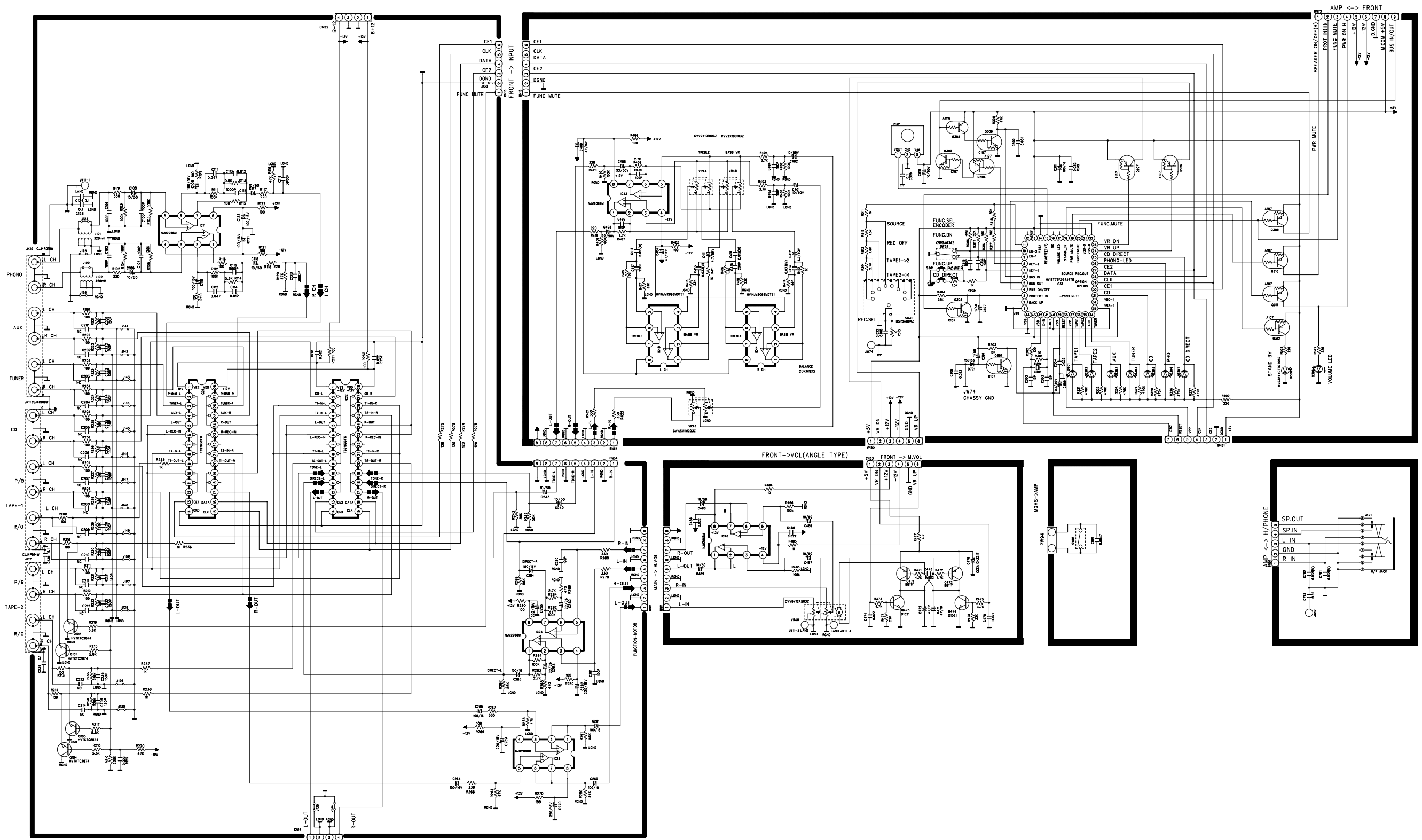




## A-H300MK3 WIRING DIAGRAM



### A-H300MK3 FRONT+INPUT SCHEMATIC DIAGRAM



## A-H300MK3 AMP SCHEMATIC DIAGRAM

