

KCW-1

POWERED SUBWOOFER

SERVICE NOTES

Issued by RJA

TABLE OF CONTENTS

SPECIFICATIONS.....	2	PARTS LIST	10
LOCATION OF CONTROLS	3	BLOCK DIAGRAM.....	15
LOCATION OF CONTROLS PARTS LIST	3	CIRCUIT BOARD(PRE BOARD).....	16
EXPLODED VIEW 1	4	CIRCUIT BOARD(PRE BOARD).....	18
EXPLODED VIEW 2	6	CIRCUIT DIAGRAM(PRE BOARD)	20
EXPLODED VIEW PARTS LIST	8	CIRCUIT BOARD(POWER BOARD).....	24
HOW TO DISASSEMBLY	9	CIRCUIT DIAGRAM(POWER BOARD)	26
WIRING DIAGRAM.....	9		



Copyright © 2003 ROLAND CORPORATION

All rights reserved. No part of this publication may be reproduced in any form without the written permission of ROLAND CORPORATION.

SPECIFICATIONS

* In the interest of product improvement, the specifications and/or appearance of this unit are subject to change without prior notice.

KCW-1 POWERED SUBWOOFER SPECIFICATIONS

Rated Power Output

200 W

Nominal Input Level

INPUT: +4 dBu (XLR type, 1/4" phone type)

Nominal Output Level

THRU OUT: +4 dBu (XLR type, 1/4" phone type)

* 0 dBu = 0.775 Vrms

Speaker

25 cm (10 inches) x 1

Controls

VOLUME Knob
CROSSOVER Knob
BOTTOM Switch
PHASE Switch
POWER Switch
GND LIFT Switch

Indicators

POWER
OPERATION

Connectors

INPUT Connectors L, R: XLR type
INPUT Jacks L(MONO), R: 1/4" phone type
THRU OUT Connectors L, R: XLR type
THRU OUT Jacks L, R: 1/4" phone type
FOOT SW Jack: 1/4" phone type

Power Supply

AC 117 V, AC 230 V, AC 240 V : 50 / 60 Hz
AC 220 V : 60 Hz

Power Consumption

135 W

Dimensions

438 (W) x 440 (D) x 460 (H) mm
17-1/4 (W) x 17-3/8 (D) x 18-1/8 (H) inches

Weight

23.0 kg
50 lbs 12 oz

Accessories

Owner's Manual English:(#SD000225)
Japanese:(#SD000224)
Power Cord 117V:(#SD000341)
230V:(#SD000342)
230VE:(#SD000343)
240V:(#SD000344)

Options

Pedal Switch : DP-2
Foot Switch : FS-5U (BOSS)

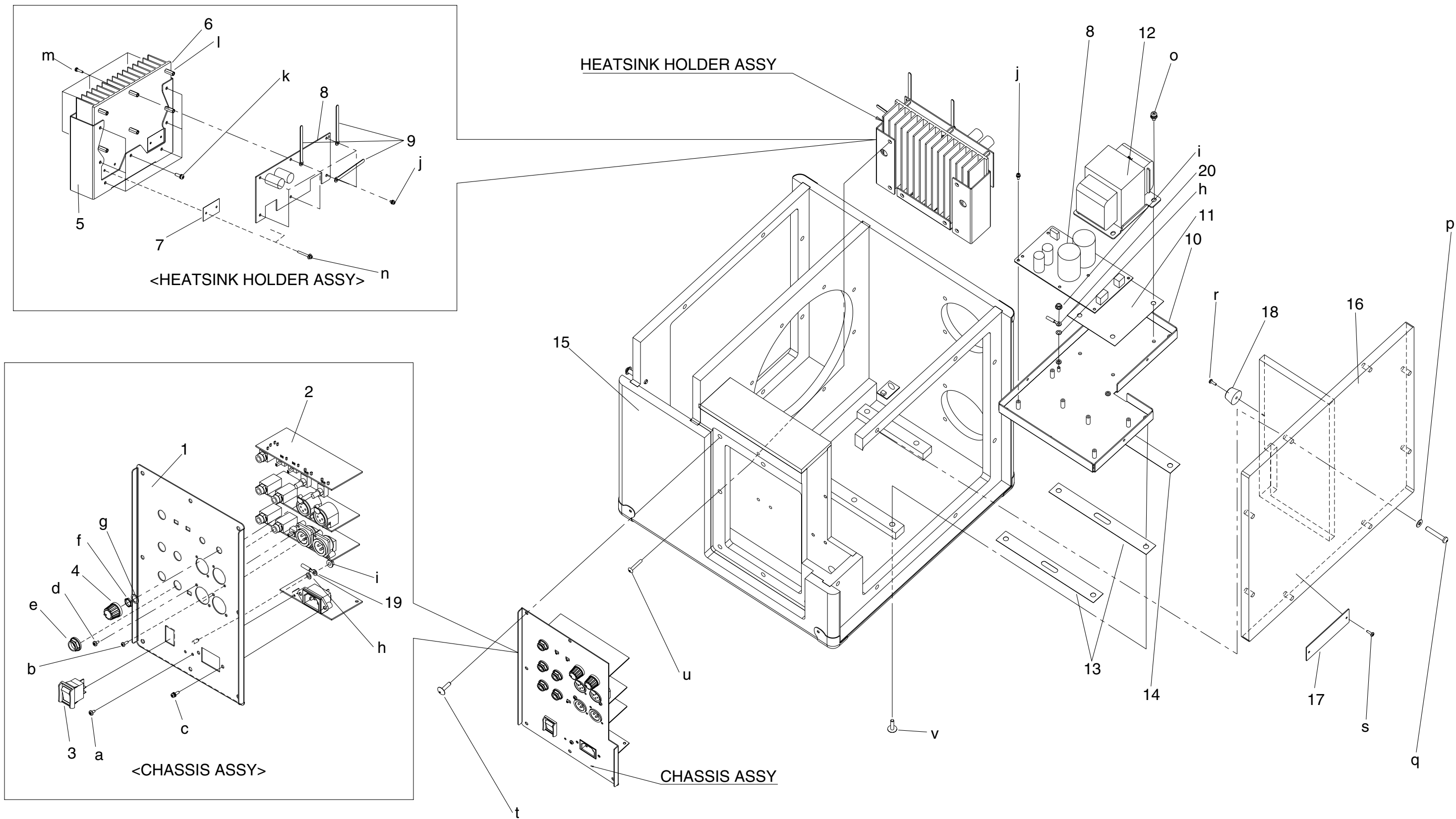
LOCATION OF CONTROLS



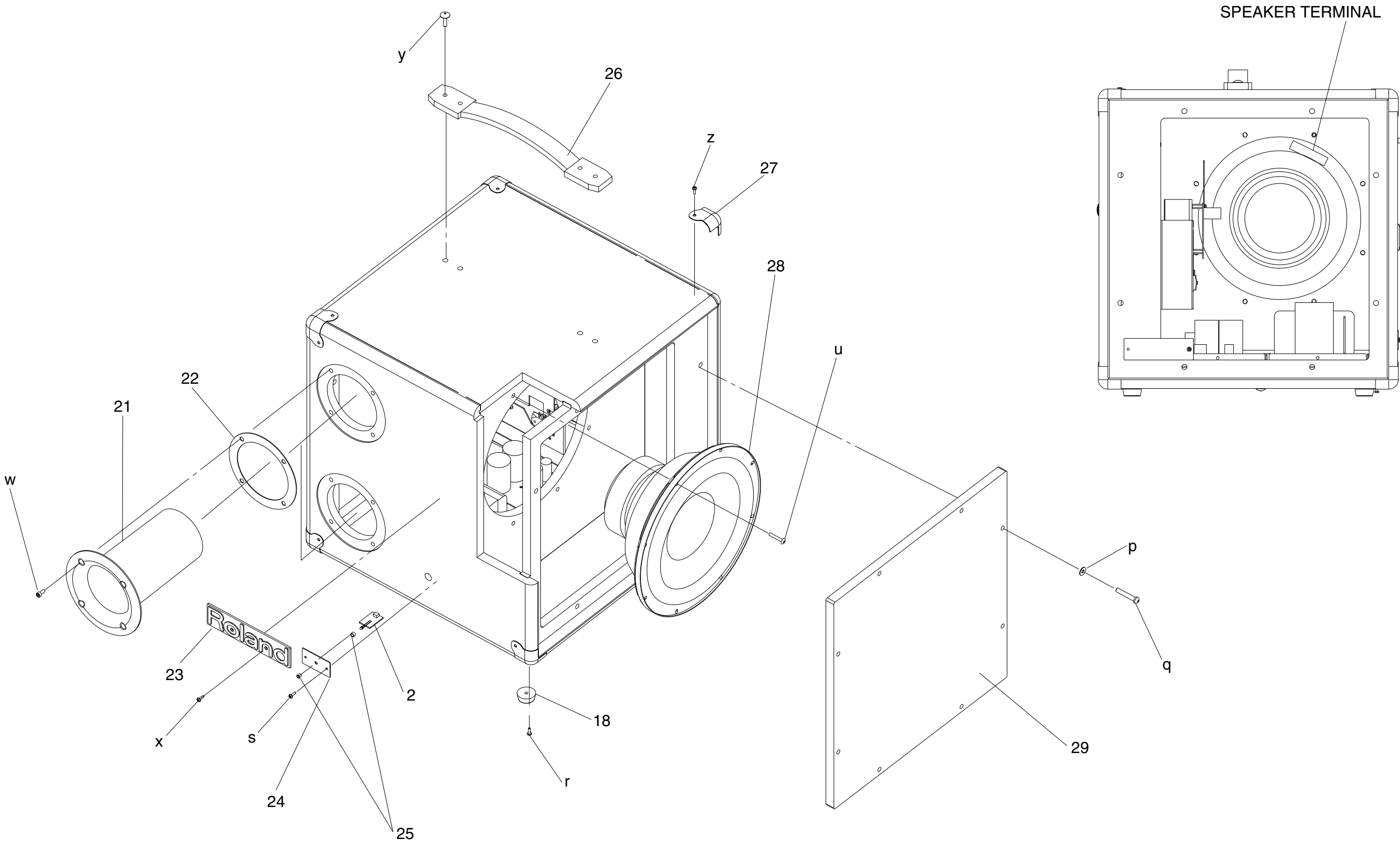
LOCATION OF CONTROLS PARTS LIST

No.	PART CODE	PART NAME	DESCRIPTION	Q'TY
1	13449146	6.5MM JACK	YKB21-5012 (W/SW)	4
	22150756	JACK NUT 2	PLASTIC/BLK	4
2	13449252	6.5MM JACK	YKB21-5006 (STEREO W/SW)	1
	22150756	JACK NUT 2	PLASTIC/BLK	1
3	13159178	SLIDE SWITCH	SSSU122500	3
4	22470119	KNOB	247-119 GOLD	1
	40120923	M9 HEX NUT		1
	40452178	VR WASHER M9		1
	01120167	POTENTIOMETER	RK14K122 100KBX2	1
5	22470119	KNOB	247-119 GOLD	1
	40120923	M9 HEX NUT		1
	40452178	VR WASHER M9		1
	01120145	POTENTIOMETER	RK11K112 10KB	1
6	01902645	XLR CONNECTOR	NC3FAH2 W/LOCK PIN	2
7	00122123	XLR CONNECTER	YKF52-5003	2
8	01786012	SEESAW SWITCH	JW-M11RKK	1
	01786045	SW HOLDER	AT-217K	1
9	F5029133	LED	L-934MBD	1
10	00125023	AC INLET (117V/230V/240V)	PWI1818 (INL-7) 10A/250V 3P	1
	02129389	AC INLET (100V)	M1818A(PWI1818) 2P	1

EXPLODED VIEW 1



EXPLODED VIEW 2



EXPLODED VIEW PARTS LIST

[PARTS]

No.	PART CODE	PART NAME	DESCRIPTION	Q'TY
1	SD000282	CHASSIS		1
2	SD000111	PRE BOARD ASSY 100V		1
	SD000112	PRE BOARD ASSY 117V		1
3	01786012	SEESAW SWITCH	JW-M11RKK	1
	01786045	SW HOLDER	AT-217K	1
4	22470119	KNOB	247-119 GOLD	2
5	SD000284	HEATSINK HOLDER		1
6	SD000329	HEATSINK		1
7	G225730401	HEATSINK INSULATOR		2
8	SD000114	POWER BOARD ASSY		1
9	SD000327	WIRING CLIP	CS-3U	3
10	SD000283	SUB CHASSIS		1
11	SD000330	TRANS SHEET		1
12	SD000314	TRANSFORMER	PT-BG409 100V /117V	1
	SD000315	TRANSFORMER	PT-BG409 230V /240V	1
13	SD000338	SUB CHASSIS SHEET L		2
14	SD000339	SUB CHASSIS SHEET S		1
15	SD000279	CABINET ASSY		1
16	SD000281	SIDE BOARD B		1
17	SD000324	CAUTION PLATE		1
18	12359104	RUBBER FOOT	G-5R	5
19	SD000313	WIRING W13 1P	L=100MM (117V /230V /240V ONLY)	1
20	SD000311	WIRING W11 1P	L=130MM	1
21	SD000336	PORT TUBE		2
22	SD000337	GASKET		2
23	HARDW00007	LOGO BADGE	(ROLAND)	1
24	SD000331	BADGE		1
25	SD000332	LED HOUSING & SPACER RTC-32		1
26	22310207	HANDLE (H40)	231-207 W /ESCUCHEON (2 HOLES)	1
27	HARDW00018	2-LEG METAL CORNER BLACK		8
28	SD000285	SPEAKER	BOSS-SP2	1
29	SD000280	SIDE BOARD A		1

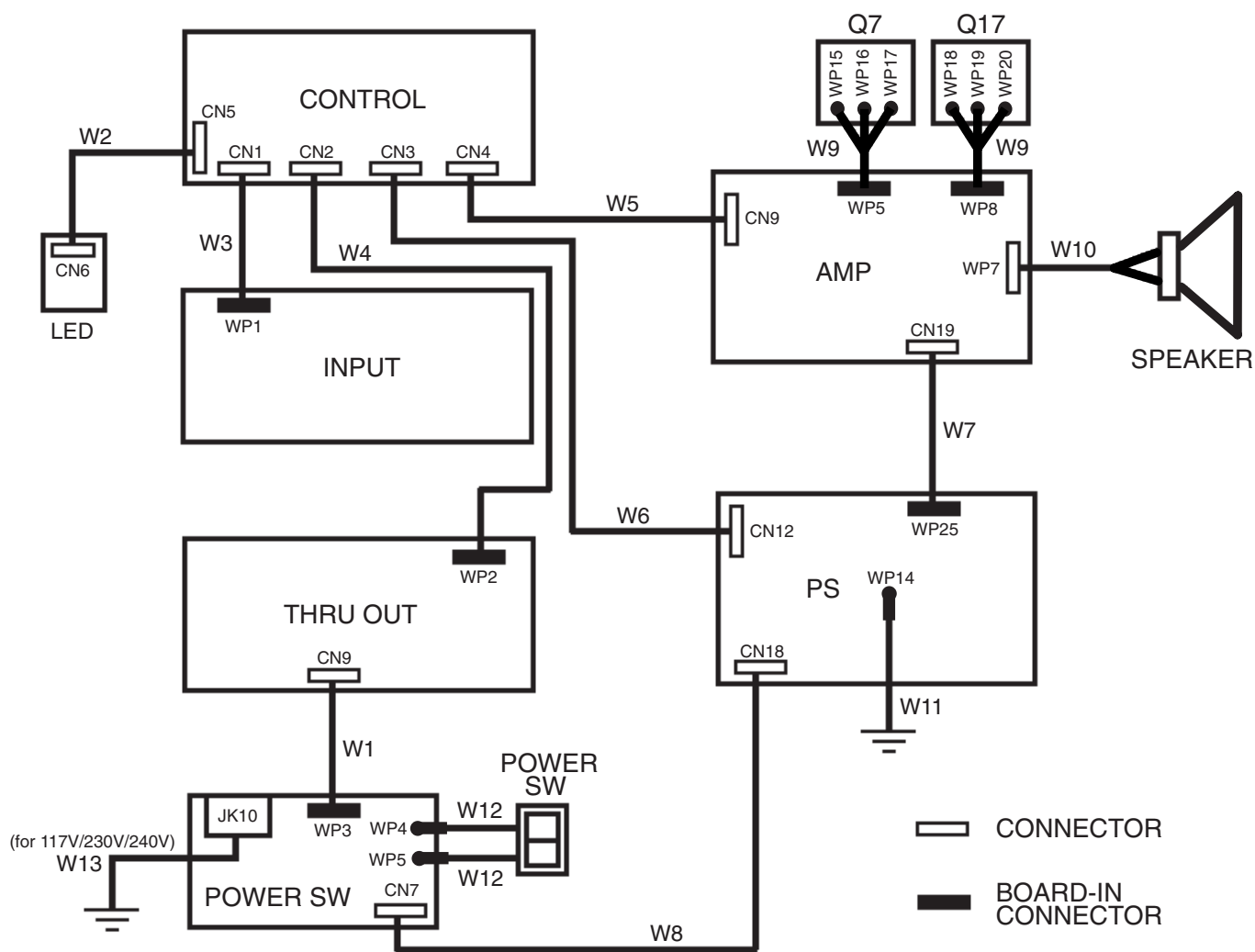
[SCREW]

No.	PART CODE	PART NAME	DESCRIPTION	Q'TY
a	40012956	SCREW M3X8	PAN MACHINE W /SW+PW FE BZC	1
b	40233012	SCREW M2.6X8	BINDING TAPTITE P BZC	4
c	40012490	SCREW 4X10	BINDING TAPTITE P BZC	2
d	40011312	SCREW 3X8	BINDING TAPTITE P BZC	4
e	22150756	JACK NUT 2	PLASTIC /BLK	5
f	40120923	M9 HEX NUT		2
g	40452178	VR WASHER M9		2
h	40011889	EXTERNAL TOOTH WASHER M4	FECM	2
i	40011767	FLANGE HEX NUT M4	FE ZC	2
j	40017934	SCREW M3X6	PAN MACHINE W /SW+PW FE ZC	12
k	40011478	SCREW M4X10	PAN SEMS FE ZC	7
l	22150518	STANDOFF	HEX.BOSS 5.5X15 M3	6
m	40011445	SCREW M3X10 PAN HEAD SEMS	FE BZC	6
n	40564556	SCREW M3X15	PAN MACHINE W /SW FW ZC	4
o	40564590	SCREW M5X12	PAN MACHINE W /SW FW ZC	4
p	40012001	FLAT WASHER 5X12X0.8	BZC	16
q	40564612	SCREW M5X35	CAP BUTTON BOLT MACHINE BZC	16
r	40010790	SCREW M3X16	TAPTITE A1 BZC	5
s	40564567	SCREW 3X15	TRUSS TAPTITE A1 BZC	4
t	40230745	SCREW M5X25	TRUSS MACHINE BZC	8
u	40010367	SCREW M4X25	BINDING MACHINE BZC	14
v	40564634	SCREW M5X45	TRUSS MACHINE BZC	8
w	40564589	SCREW M4X20	CAP BOLT MACHINE BZC	8
x	40564645	SCREW 3X12	OVALHEAD TAPTITE A1 BZC	2
y	40564601	SCREW M5X35	OVALHEAD MACHINE BZC	4
z	40564578	SCREW 3.5X14	TRUSS TAPTITE A1 BZC	16


HOW TO DISASSEMBLY

1. Remove SIDE BOARDS at right and left side (16, 29).
2. Remove both PORT TUBE at the front (21).
3. Remove the Speaker (28).
4. Remove the CHASSIS ASSY at the rear.
5. Remove the SUB CHASSIS ASSY.
Screws fixing SUB CHASSIS ASSY are located at the base of the cabinet (v).
6. Remove the HEATSINK HOLDER.
Screws fixing HEATSINK HOLDER are located at the space that CHASSIS ASSY removed in the rear (u).
In case of exchanging the screw marked "r", use 40010790 SCREW M3X16 TAPTITE A1 ZC.

WIRING DIAGRAM



PARTS LIST

SAFETY PRECAUTIONS:
The parts marked  have safety-related characteristics. Use only listed parts for replacement.

CONSIDERATION ON PARTS ORDRING
When ordering any parts listed in the parts list, please specify the following items in the order sheet.

	QTY	PART NUMBER	DESCRIPTION	MODEL NUMBER
Ex.	10	22575241	Sharp Key	C-20/50
	15	2247017300	Knob (orange)	DAC-15D

Failure to completely fill the above items with correct number and description will result in delayed or even undelivered replacement.

NOTE: The parts marked # are new. (initial parts)

CASING															
#		SD000279	CABINET ASSY		1										
		NOTE: 'CABINET ASSY' includes the following parts.													
#	△	SD000336	PORT TUBE		2										
	△	22310207	HANDLE (H40)	231-207 W /ESCUCHEON (2 HOLES)	1										
		HARDW00018	2-LEG METAL CORNER BLACK		8										
		12359104	RUBBER FOOT	G-5R	5										
		HARDW00007	LOGO BADGE	ROLAND	1										
		SD000337	GASKET		2										
#		SD000280	SIDE BOARD A		1										
#		SD000281	SIDE BOARD B		1										
CHASSIS															
#		SD000282	CHASSIS		1										
#		SD000284	HEATSINK HOLDER		1										
#		SD000283	SUB CHASSIS		1										
KNOB,BUTTON															
		22470119	KNOB	247-119 GOLD	2										
SWITCH															
		13159178	SSSU122500	SLIDE SWITCH	3										
				SW1, SW2 on CONTROL.											
				SW3 on THRU OUT											
	△	01786012	JW-M11RKK	SEESAW SWITCH	1										
		01786045	AT-217K	SW HOLDER	1										
JACK,EXT TERMINAL															
		00122123	YKF52-5003	XLR CONNECTER	2										
		13449146	YKB21-5012 (W/SW)	6.5MM JACK	4										
				JK5, JK6 on THRU OUT											
		13449252	YKB21-5006 (STEREO W/SW)	6.5MM JACK	1										
		01902645	NC3FAH2 W/LOCK PIN	XLR CONNECTOR	2										
				JK7, JK8 on THRU OUT											
				JK9 on CONTROL											
				JK1, JK2 on INPUT											
SPEAKER,BUZZER															
#	△	SD000285	BOSS-SP2	SPEAKER	1										
PWB ASSY															
#	△	SD000114	POWER BOARD ASSY		1										
#	△	SD000111	PRE BOARD ASSY 100V		1										
#	△	SD000112	PRE BOARD ASSY 117V		1										
		NOTE: Replacement PRE BOARD ASSY is for 117V version exclusive use.													
		PRE BOARD ASSY for 117V version differs from 230V/240V version in FUSE system only.													
		When using PCB (230V/240V) version, be sure to make the following modifications.													
		1. Replace fuse (F1 on PRE BOARD ASSY) to specific one. (SD000299 5ST 2.5A 250V)													
		2. Please change into the check marking "230/240V T2.5AL 250V" from "100/117V T5AL 250V" on PRE BOARD ASSY.													
		Please refer to TABLE A.													
		<table><tr><td>100/117V</td><td>T5AL 250V</td><td>→</td><td>100/117V</td><td>T5AL 250V</td></tr><tr><td>230/240V</td><td>T2.5AL 250V</td><td></td><td>230/240V</td><td>T2.5AL 250V</td></tr></table>				100/117V	T5AL 250V	→	100/117V	T5AL 250V	230/240V	T2.5AL 250V		230/240V	T2.5AL 250V
100/117V	T5AL 250V	→	100/117V	T5AL 250V											
230/240V	T2.5AL 250V		230/240V	T2.5AL 250V											
IC															
		15259129	TC4013BF(N)-TP1	IC CMOS	1										
		15189261	M5218AFP-600E	IC (BIPOLAR OP AMP)	11										
				IC8 on CONTROL											
				IC1, IC2, IC3 on INPUT.											
				IC4, IC5, IC6, IC7, IC10 on CONTROL.											
				IC11, IC12, IC13 on THRU OUT											

TRANSISTOR						
	△	15119132	2SA1015-GR(TPE2)	TRANSISTOR	Q5 on AMP. Q3, Q40, Q41 on PS	4
		15309104	2SA1586-GR(TE85R)	TRANSISTOR	Q8, Q10 on CONTROL	2
	△	15119723	2SA1837	TRANSISTOR	Q8, Q16 AMP	2
		15119158	2SA970-GR	TRANSISTOR	Q13, Q14 on AMP	2
	△	01672556	2SB1642	TRANSISTOR	Q2 on PS	1
	△	15129151	2SC1815-GR(TPE2)	TRANSISTOR	Q6 on AMP. Q4 on PS	2
		15129192	2SC2240-GR(TPE2)	TRANSISTOR	Q10, Q11 on AMP	2
		15129152	2SC2878-A(TPE2)	TRANSISTOR	Q12 on AMP	1
		15319107	2SC4116-GR(TE85R)	TRANSISTOR	Q6, Q9, Q13, Q14, Q15 on CONTROL	5
		01239990	2SC4117-GR(TE85L)	TRANSISTOR	Q2, Q3 on CONTROL	2
		15319115	2SC4213-A(TE85L)	TRANSISTOR	Q16, Q17, Q18, Q19, Q20, Q21 on THRU OUT	6
	△	15129732	2SC4793	TRANSISTOR	Q9, Q15 on AMP	2
	△	01672545	2SD2531	TRANSISTOR	Q1 on PS	1
	△	01782612	2SA1494	POWER TRANSISTOR	Q17 on AMP	1
	△	01782601	2SC3858	POWER TRANSISTOR	Q7 on AMP	1
		15329103T0	2SK880-GR(TE85R)	FET	Q1, Q4 on CONTROL	2
DIODE						
		15019126	1SS133 T-77	SWITCHING DIODE	D3, D4 on PS	2
		15339119T0	1SS352(TPH3)	SWITCHING DIODE	D1, D2, D3, D4, D5, D6 on CONTROL	6
		F5029133	L-934MBD	LED	LED1, LED2 on POWER SW	2
		F5019203	1N4004	DIODE	D59, D60 on AMP	2
		15019654	RD16EB2-T1	DIODE	D1, D2 on PS	2
	△	F5039118	W04G	DIODE	BD2 on PS	1
	△	F5039113	PBPC806	BRIDGE DIODE	BD1 on PS	1
		15339120T0	1SS302(TE85R)	ARRAY DIODE	DA1, DA2, DA3, DA4, DA5, DA6 on INPUT. DA13 on CONTROL. DA7, DA8, DA9, DA10, DA11, DA12 on THRU OUT	13
RESISTOR						
		13749151T0	SR50NJ 10K	RESISTOR (1/2W)	R2 on PS	1
		13749166T0	SR50NJ 220K	RESISTOR	R6 on PS	1
		01011856	RPC05T 0R0 J	MTL.FILM RESISTOR	JSW3, JSW4 on CONTROL	2
		00566867	RPC05T 100 J	MTL.FILM RESISTOR	R57 on CONTROL	1
		00567023	RPC05T 101 J	MTL.FILM RESISTOR	R1, R8, R12, R19, R26, R31 on INPUT. R70, R74, R131 on CONTROL. R137, R143, R150, R156, R163, R169 on THRU OUT	15
		00567156	RPC05T 102 J	MTL.FILM RESISTOR	R71, R98, R112, R114 on CONTROL	4
		00567289	RPC05T 103 J	MTL.FILM RESISTOR	R6, R17, R25, R30 on INPUT. R35, R38, R39, R49, R52, R58, R61, R67, R81, R100, R107 on CONTROL. R134, R135, R140, R141, R147, R148, R153, R154, R160, R161, R166, R167 on THRU OUT	27
		00567412	RPC05T 104 J	MTL.FILM RESISTOR	R110 on CONTROL	1
		00567556	RPC05T 105 J	MTL.FILM RESISTOR	R88, R93 on CONTROL	2
		00567178	RPC05T 152 J	MTL.FILM RESISTOR	R24, R29 on INPUT. R94 on CONTROL	3
		00567301	RPC05T 153 J	MTL.FILM RESISTOR	R63, R73 on CONTROL	2
		00567189	RPC05T 182 J	MTL.FILM RESISTOR	R60 on CONTROL	1
		00567312	RPC05T 183 J	MTL.FILM RESISTOR	R40, R42 on CONTROL	2
		00567067	RPC05T 221 J	MTL.FILM RESISTOR	R136, R142, R149, R155, R162, R168 on THRU OUT	6
		00567190	RPC05T 222 J	MTL.FILM RESISTOR	R45, R84, R85, R109, R128, R133 on CONTROL. R145 on THRU OUT	7
		00567323	RPC05T 223 J	MTL.FILM RESISTOR	R2, R3, R4, R5, R7, R9, R10, R11, R13, R14, R15, R16, R18, R20, R21, R22, R27, R32 on INPUT. R33, R36, R37, R41, R44, R46, R47, R48, R51, R65, R66, R101, R104, R108, R127 on CONTROL. R138, R144, R151, R157, R164, R170 on THRU OUT	39
		00567456	RPC05T 224 J	MTL.FILM RESISTOR	R62, R122 on CONTROL	2
		00567334	RPC05T 273 J	MTL.FILM RESISTOR	R56, R89 on CONTROL	2
		00567234	RPC05T 392 J	MTL.FILM RESISTOR	R95 on CONTROL	1
		00567112	RPC05T 471 J	MTL.FILM RESISTOR	R105 on CONTROL	1
		00567245	RPC05T 472 J	MTL.FILM RESISTOR	R69, R72, R103 on CONTROL	3
		00567378	RPC05T 473 J	MTL.FILM RESISTOR	R34, R43, R50, R53, R54, R75, R76, R77, R78, R79, R80, R83, R99, R106, R111, R113, R116, R120, R121, R123, R126, R132 on CONTROL	22
		00567501	RPC05T 474 J	MTL.FILM RESISTOR	R64, R102, R117 on CONTROL	3
		00567267	RPC05T 682 J	MTL.FILM RESISTOR	R139, R146, R152, R158, R159, R165 on THRU OUT	6
		00567390	RPC05T 683 J	MTL.FILM RESISTOR	R90, R129, R130 on CONTROL	3
#	△	F3819905	1/2W 27 OHM	METAL OXIDE FILM RESISTOR	R41 on AMP	1
#	△	F2559819	1/4W 220 OHM	METAL OXIDE FILM RESISTOR	R33, R45 on AMP	2

RESISTOR

#	△	F3819909	1/4W 3.3 OHM	METAL OXIDE FILM RESISTOR	R29, R30, R49, R52 on AMP	4
#	△	F3819908	1/4W 47 OHM	METAL OXIDE FILM RESISTOR	R21, R59 on AMP	2
#	△	F3839193	SQZ 5W 0.33 OHM	CEMENT RESISTOR	R34, R46 on AMP	2
#		13749201T0	1/2W 1.2K OHM	CARBON RESISTOR	R16 on PS	1
#		13749204T0	1/2W 2.2K OHM	CARBON RESISTOR	R4, R8, R9 on PS	3
#		03017312	1/2W 22K OHM	CARBON RESISTOR	R7,on PS	1
#		13749155T0	1/2W 27K OHM	CARBON RESISTOR	R28, R51 on AMP	2
		13749831T0	SR25TR 273 J	CARBON RESISTOR	R48 on AMP	1
		13749773T0	SR25TRE 101 J	CARBON RESISTOR	R22, R58, R296 on AMP	3
		13749797T0	SR25TRE 102 J	CARBON RESISTOR	R60 on AMP	1
		13749845T0	SR25TRE 104 J 1/4W	CARBON RESISTOR	R12 on PS	1
		13749825T0	SR25TRE 153 J	CARBON RESISTOR	R50 on AMP	1
		13749805T0	SR25TRE 222 J	CARBON RESISTOR	R23, R24, R55, R56 on AMP	4
		13749829T0	SR25TRE 223 J	CARBON RESISTOR	R5 on PS	1
		13749809T0	SR25TRE 332 J 1/6W	CARBON RESISTOR	R40 on AMP; R10, R11 on PS	3
		13749833T0	SR25TRE 333 J	CARBON RESISTOR	R26, R27, R36, R53, R54, R61 on AMP	6
		13749765T0	SR25TRE 470 J	CARBON RESISTOR	R14 on PS	1
		13749789T0	SR25TRE 471 J	CARBON RESISTOR	R32 on AMP	1
		13749813T0	SR25TRE 472 J	CARBON RESISTOR	R57 on AMP	1
		13749837T0	SR25TRE 473 J	CARBON RESISTOR	R25 on AMP. R1, R13, R15, R17, R19, R358, R359, R360 on PS	9
		13749791T0	SR25TRE 561 J	CARBON RESISTOR	R37, R38, R43, R44 on AMP	4
		13749815T0	SR25TRE 562 J	CARBON RESISTOR	R39 on AMP	1
		13749817T0	SR25TRE 682 J	CARBON RESISTOR	R35, R42 on AMP	2

POTENTIOMETER

		01120145	RK11K112 10KB	POTENTIOMETER	VR1 on CONTROL	1
		01120167	RK14K122 100KBX2	POTENTIOMETER	VR2 on CONTROL	1

CAPACITOR

		03232167	RPER11H221K2M1D01A	PTR MLT.LAY.CERA	C234, C237 on AMP	2
		13549274M0	ECQ-B1H393JF3	POLYEST. CAPACITOR	C43 on CONTROL	1
		13549277M0	ECQ-B1H683JF3	POLYEST. CAPACITOR	C26, C27 on AMP	2
		13549267M0	ECQ-M1H103JF3 0.01UF/50V	POLYEST. CAPACITOR	C22, C25 on AMP	2
		13549269M0	ECQ-MIH153JF3	POLYEST. CAPACITOR	C67 on CONTROL	1
		03018545	RPE2C1H101J2M1A01A	MLT.LAY.CERAMIC CAPACITOR	C20 on AMP	1
		03232189	RPE2C1H220J2M1Y01A	MLT.LAY.CERA CAPACITOR	C21, C23 on AMP	2
		F3589502	0.22U/250VJ(MM)	METALIZED FILM CAPACITOR	C2 on PS	1
		02455001	ECQE1105KFB	M.POLYEST CAPACITOR	C24 on AMP	1
#		13549130M0	0.12UF/50V	FILM CAPACITOR	C45, C66 on CONTROL	2
#		03012567	10UF/50V BI-POLAR	ELECTROLYTIC CAPACITOR	C19, C32 on AMP	2
#	△	C0400014	2200UF/35V 105 DEG.	ELECTROLYTIC CAPACITOR	C4, C10 on PS	2
#	△	C0400002	220UF/35V 105 DEG.	ELECTROLYTIC CAPACITOR	C6, C9 on PS	2
#		SD000294	22UF/100V 105 DEG.	ELECTROLYTIC CAPACITOR	C303, C304 on AMP	2
#		SD000297	4.7UF/50V BI-POLAR	ELECTROLYTIC CAPACITOR	C90, C91, C167 on CONTROL	3
#	△	C0400020	4700UF/100V 105 DEG.	ELECTROLYTIC CAPACITOR	C1, C3 on PS	2
#	△	C0400015	470UF/100V 105 DEG.	ELECTROLYTIC CAPACITOR	C15, C30 on AMP	2
#	△	C0400011	470UF/35V 105 DEG.	ELECTROLYTIC CAPACITOR	C5, C11 on PS	2
		13639587M0	22 UF/35 V	CHEMICAL CAPACITOR	C13 on PS	1
		13649269	ECA1CM100B 10UF/16V	CHEMICAL CAPACITOR	C7, C21 on INPUT. C46, C47, C48, C52, C53, C54, C58, C59, C60, C78, C80, C82, C83, C84, C146, C169 on CONTROL	18
		13639603	ECA1HM2R2B	CHEMICAL CAPACITOR	C61 on CONTROL	1
		13639609M0	ECA1HM470B	CHEMICAL CAPACITOR	C1, C6, C13, C20, C27, C37 on INPUT. C105, C110, C113, C119, C124, C128 on THRU OUT	12
		13639586M0	ECA1VM100B	CHEMICAL CAPACITOR	C12, C15 on INPUT. C139, C140 on CONTROL. C142, C143 on THRU OUT	6
#	△	13639602	ECEA1HM010B 1UF/50V	CHEMICAL CAPACITOR	C56 on CONTROL. C12 on PS	2
		02566945	1608 0.047UF	CERAMIC CHIP CAPACITOR	C72 on CONTROL	1
		F3519502	EC8472MH	CERAMIC CAPACITOR	C8 on PS	1
		01674612	ECJ1VB1H103K	CERAMIC CAPACITOR	C63, C79 on CONTROL	2
		00568789	ECJ1VF1C224Z	CERAMIC CAPACITOR	C81 on CONTROL	1
		01674701	ECJ1VF1E104Z 0.1UF/16VK	CERAMIC CAPACITOR	C10, C11, C18, C24, C25, C29, C30, C31, C32, C34, C35, C36, C39, C44, C68, C69, C71, C75, C77, C96, C102, C117 on INPUT. C107, C109, C115, C118, C122, C126, C130, C131, C132, C133, C134, C135, C136, C153, C154, C155, C156, C157, C158, C159, C160, C161 on THRU OUTC40, C49, C64, C65, C85, C88, C89, C92, C93, C94, C95, C97, C98, C99, C100, C101, C103, C121, C137, C138, C144, C145, C147, C148, C149, C150, C151, C152, C164 on CONTROL	73
		01674334	ECUV1H101JCV	CERAMIC CAPACITOR	C2, C8, C14, C22 on INPUT. C41 on CONTROL	5

CAPACITOR					
	01674389	ECUV1H221JCV	CERAMIC CAPACITOR	C3, C5, C9, C16, C19, C23, C28, C38 on INPUT. C106, C111, C114, C120, C125, C129 on THRU OUT	14
	01674278	ECUV1H470JCV	CERAMIC CAPACITOR	C4, C17, C162, C163 on INPUT. C42, C50, C51, C57 on CONTROL. C104, C108, C112, C116, C123, C127 on THRU OUT	14
△	01674423	ECUV1H471JCV	CERAMIC CAPACITOR	C55 on CONTROL	1
	F3519501	PY17FY472MLO	CERAMIC CAPACITOR	C141 on POWER SW	1
	13639534	ECEA1AKS221B 220UF/10V	CAPACITOR	C168 on CONTROL	1
	13549129M0	ECQ-B1H104JF	CAPACITOR	C62 on CONTROL	1
FUSE,FUSE HOLDER					
△	F2559307	MRT 100MA/250V	RADIAL TYPE	FUSE4, FUSE5 on AMP	2
△	12199550RT	HFT-015	FUSE HOLDER	FUSE1 on POWER SW. FUSE2, FUSE3 on PS	6
#	△	SD000299	5ST 2.5A 250V (230V/240V)	FUSE1 on POWER SW	1
#	△	F2559101	5ST 500MA 250V	FUSE2, FUSE3 on PS	2
#	△	12559194RT	5ST 5A 250V (100V/117V)	FUSE1 on POWER SW	1
CONNECTOR					
△	13369570	B2B-PH-K-S (2P)	CONNECTOR	CN5 on CONTROL. CN9 on THRU OUT	2
	13369898	B2P3-VH 7A/250V	CONNECTOR	CN7 on POWER SW. CN18 on PS	2
	13369586	B3P-VH	CONNECTOR	CN19 on AMP	1
	13369567	B4B-PH-K-S JST (4P)	CONNECTOR	CN4 on CONTROL. CN9 on AMP	2
	13369515	B5B-PH-K-S JST	CONNECTOR	CN1 on CONTROL	1
△	13369981	B5P-VH 7A/250V	CONNECTOR	CN16 on PS	1
	13369566	B6B-PH-K-S JST(6P)	CONNECTOR	CN2 on CONTROL	1
	13369516	B9B-PH-KS JST	CONNECTOR	CN3 on CONTROL. CN12 on PS	2
	02893434	S2B-PH-K-S	CONNECTOR	CN6 on CONTROL	1
WIRING,CABLE					
#	SD000301	WIRING W1 2P	L=160MM	CN9 on THRU OUT <-> WP3 on POWER SW	1
#	SD000302	WIRING W2 2P	L=1000MM	CN5 on CONTROL <-> CN6 on POWER SW	1
#	SD000303	WIRING W3 5P	L=120MM	WP1 on INPUT <-> CN1 on CONTROL	1
#	SD000304	WIRING W4 6P	L=150MM	CN2 on CONTROL <-> WP2 on THRU OUT	1
#	SD000305	WIRING W5 4P	L=420MM	CN4 on CONTROL <-> CN9 on AMP	1
#	SD000306	WIRING W6 9P	L=540MM	CN3 on CONTROL <-> CN12 on PS	1
#	SD000307	WIRING W7 3P	L=180MM	CN19 on AMP <-> WP25 on PS	1
#	△	SD000308	WIRING W8 2P	CN7 POWER SW <-> CN18 on PS	1
#	SD000309	WIRING W9 3P	L=80MM	WP5 on AMP <-> WP15,WP16,WP17 on AMP. WP8 on AMP <-> WP18,WP19,WP20 on AMP	2
#	△	SD000310	WIRING W10 2P	WP7 on AMP <-> SPEAKER	1
#	SD000311	WIRING W11 1P	L=130MM	WP14 on PS <-> CHASSIS GND	1
#	△	SD000312	WIRING W12 1P	WP4 on POWER SW <-> POWER SW TERMINAL. WP5 on POWER SW <-> POWER SW TERMINAL	2
#	△	SD000313	WIRING W13 1P	L=100MM (117V/230V/240V ONLY) JK10 TERMINAL on POWER SW <-> CHASSIS GND	1
TRANSFORMER					
#	△	SD000314	PT-BG409 100V/117V	TRANSFORMER	1
#	△	SD000315	PT-BG409 230V/240V	TRANSFORMER	1
AC INLET,OUTLET					
△	02129389	M1818A(PWI1818) 2P	AC INLET	JK10 on POWER SW	1
△	00125023	PWI1818 (INL-7) 10A/250V 3P	AC INLET	JK10 on POWER SW	1
SCREWS					
#	40564578	SCREW 3.5X14	TRUSS TAPTITE A1 BZC	for CORNER PROTECTOR	16
#	40564567	SCREW 3X15	TRUSS TAPTITE A1 BZC	for KCW-1 BADGE, CAUTION PLATE	4
	40230745	SCREW M5X25	TRUSS MACHINE BZC	for CHASSIS	8
#	40564634	SCREW M5X45	TRUSS MACHINE BZC	for SUB CHASSIS	8
	22150756	JACK NUT 2	PLASTIC/BLK		5
	40011478	SCREW M4X10	PAN SEMS FE ZC	for HEATSINK HOLDER	7
	40017934	SCREW M3X6	PAN MACHINE W/SW+PW FE ZC	for AMP BOARD, PS BOARD	12
	40012956	SCREW M3X8	PAN MACHINE W/SW+PW FE BZC	for SCREW TERMINAL	1
#	40564556	SCREW M3X15	PAN MACHINE W/SW FW ZC	for POWER TRANSISTOR	4
#	40564590	SCREW M5X12	PAN MACHINE W/SW FW ZC	for POWER TRANSFORMER	4
#	40564645	SCREW 3X12	OVALHEAD TAPTITE A1 BZC	for ROLAND BADGE	2

SCREWS

#	40564601	SCREW M5X35	OVALHEAD MACHINE BZC	for HANDLE	4
	40120923	SCREW	M9 HEX NUT	for POTENTIOMETER	2
	22150518	STANDOFF	HEX.BOSS 5.5X15 M3		6
	40011889	EXTERNAL TOOTH WASHER M4	FECM	for GND, for SAFETY GND (117V/230V/240V)	2
	40011767	FLANGE HEX NUT M4	FE ZC	for GND, for SAFETY GND (117V/230V/240V)	2
	40011445	SCREW M3X10 PAN HEAD SEMS	FE BZC	for STANDOFF	6
#	40564612	SCREW M5X35	CAP BUTTON BOLT MACHINE BZC	for SIDE BOARD A/B	16
#	40564589	SCREW M4X20	CAP BOLT MACHINE BZC	for PORT TUBE	8
#	40012001	FLAT WASHER 5X12X0.8	BZC	for SIDE BOARD A/B	16
	40011312	SCREW 3X8	BINDING TAPTITE P BZC	for THRU OUT XLR	4
	40012490	SCREW 4X10	BINDING TAPTITE P BZC	for AC INLET	2
	40233012	SCREW M2.6X8	BINDING TAPTITE P BZC	for INPUT XLR	4
#	40010790	SCREW M3X16	TAPTITE A1 BZC		5
	40010367	SCREW M4X25	BINDING MACHINE BZC	for SPEAKER, HEATSINK HOLDER	14
	40452178	VR WASHER M9		for POTENTIOMETER	2

PACKING

#	SD000318	PACKING CASE			1
#	SD000320	PACKING PAD BOTTOM			1
#	SD000321	PACKING PAD CORNER			8
#	SD000319	PACKING PAD UPPER			1

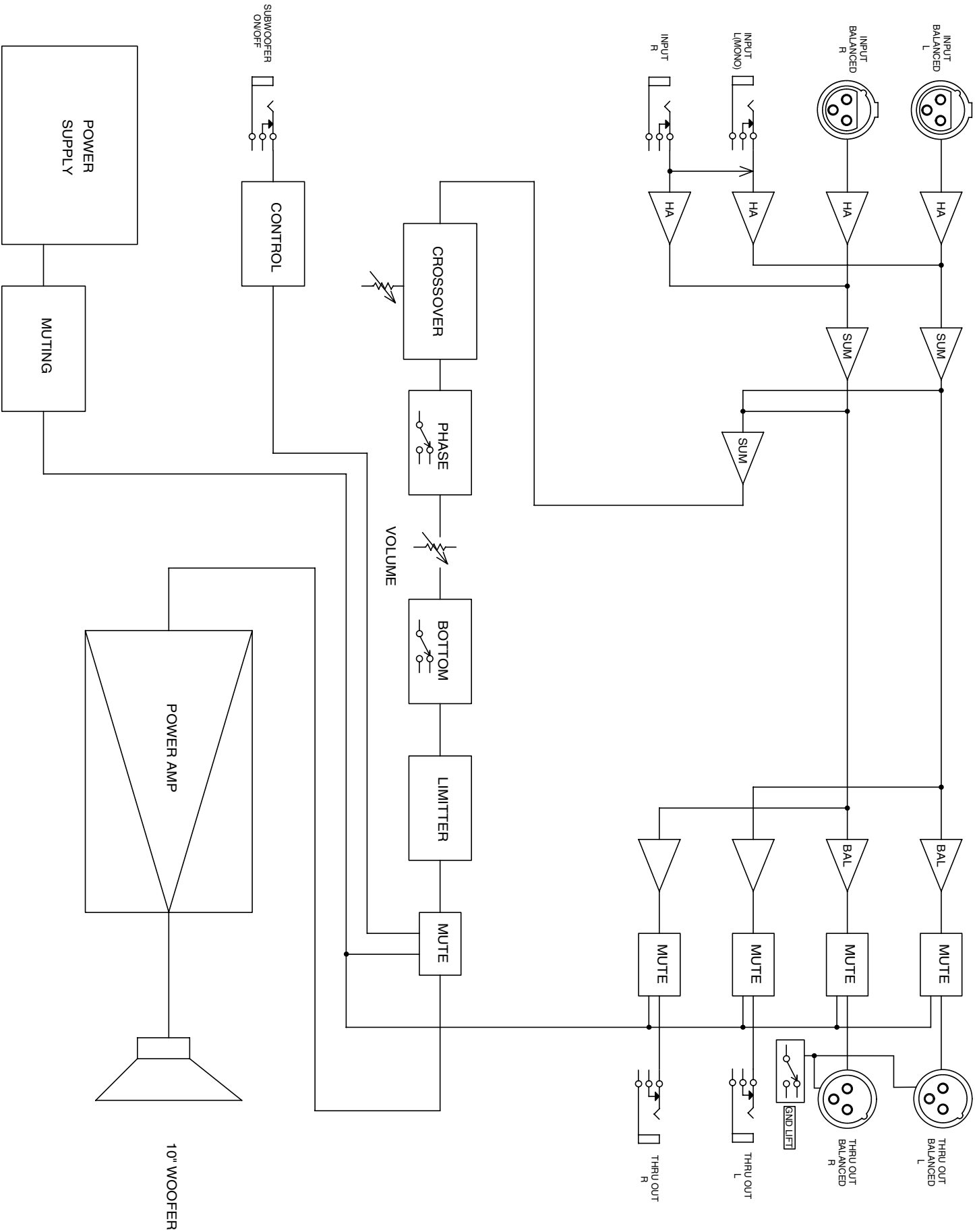
MISCELLANEOUS

	KC60TE01	TERMINAL	PT1870502	TER3, TER4, TER5 on PS	3
#	SD000326	SCREW TERMINAL	JH-8M3	TER1 on POWER SW	1
#	SD000325	SPACER	FAI 2.0MM H12 VW-1		4
#	SD000327	WIRING CLIP	CS-3U		3
#	SD000331	BADGE			1
#	SD000324	CAUTION PLATE			1
#	SD000337	GASKET		for PORT TUBE	2
#	△ SD000329	HEATSINK			1
#	△ G225730401	HEATSINK INSULATOR		for Q7, Q17	2
#	SD000332	LED HOUSING & SPACER RTC-32			1
#	△ SD000336	PORT TUBE			2
#	SD000338	SUB CHASSIS SHEET L			2
#	SD000339	SUB CHASSIS SHEET S			1
#	SD000330	TRANS SHEET			1
#	SD000333	WIRE CUSHION A			1
#	SD000334	WIRE CUSHION B			1
#	SD000335	WIRE CUSHION C			1

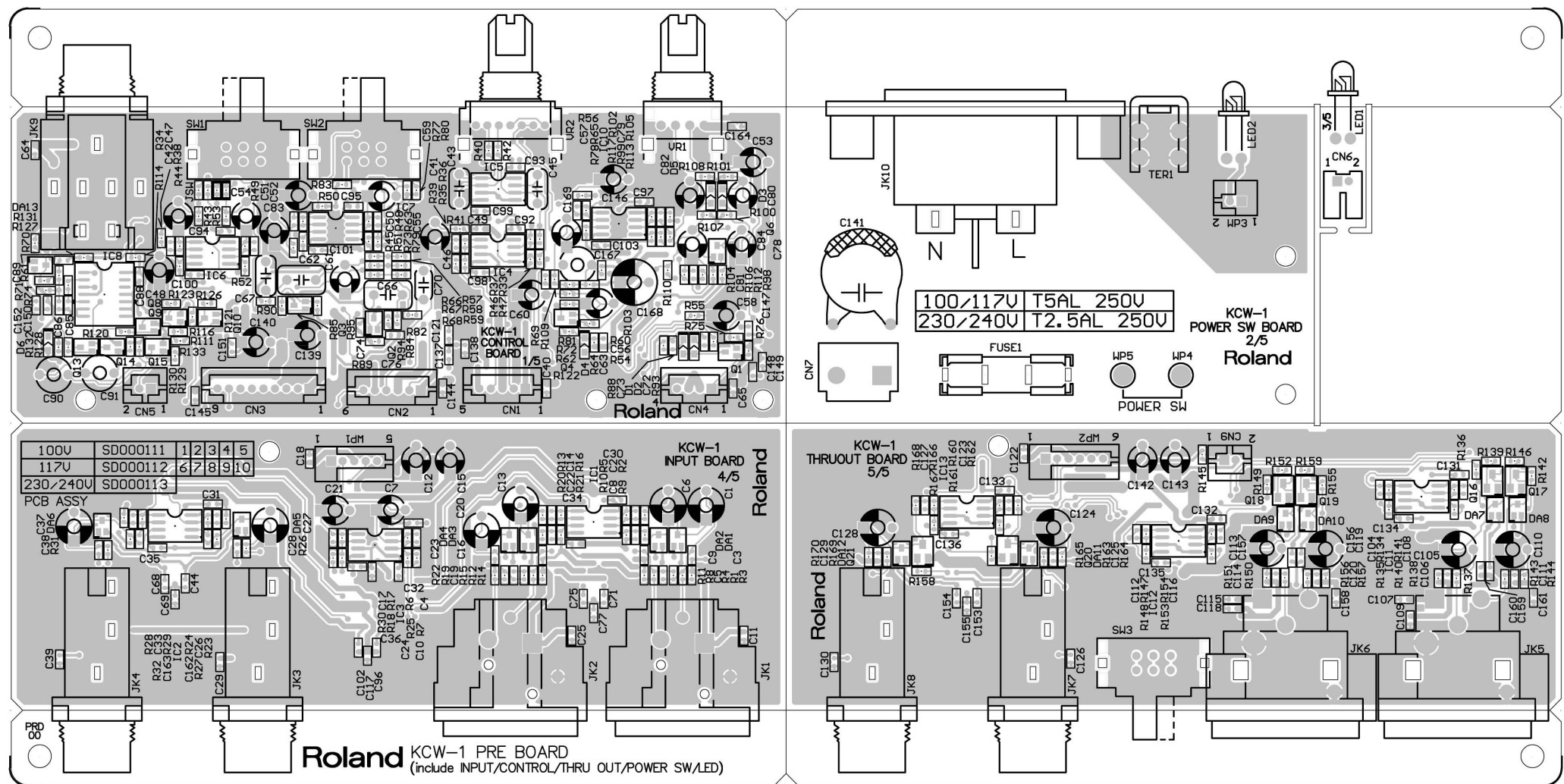
ACCESSORIES (Standard)

#	SD000224	OWNER'S MANUAL	JAPANESE		1
#	SD000225	OWNER'S MANUAL	ENGLISH		1
#	△ SD000344	POWER CORD SET	240V (240V ONLY)		1
#	△ SD000343	POWER CORD SET	230VE		1
#	△ SD000342	POWER CORD SET	230V		1
#	△ SD000341	POWER CORD SET	117V		1
#	△ SD000340	POWER CORD SET	100V		1
#	40232334	WARRANTY CARD	MOCHIKOMI JAPAN ONLY		1

BLOCK DIAGRAM

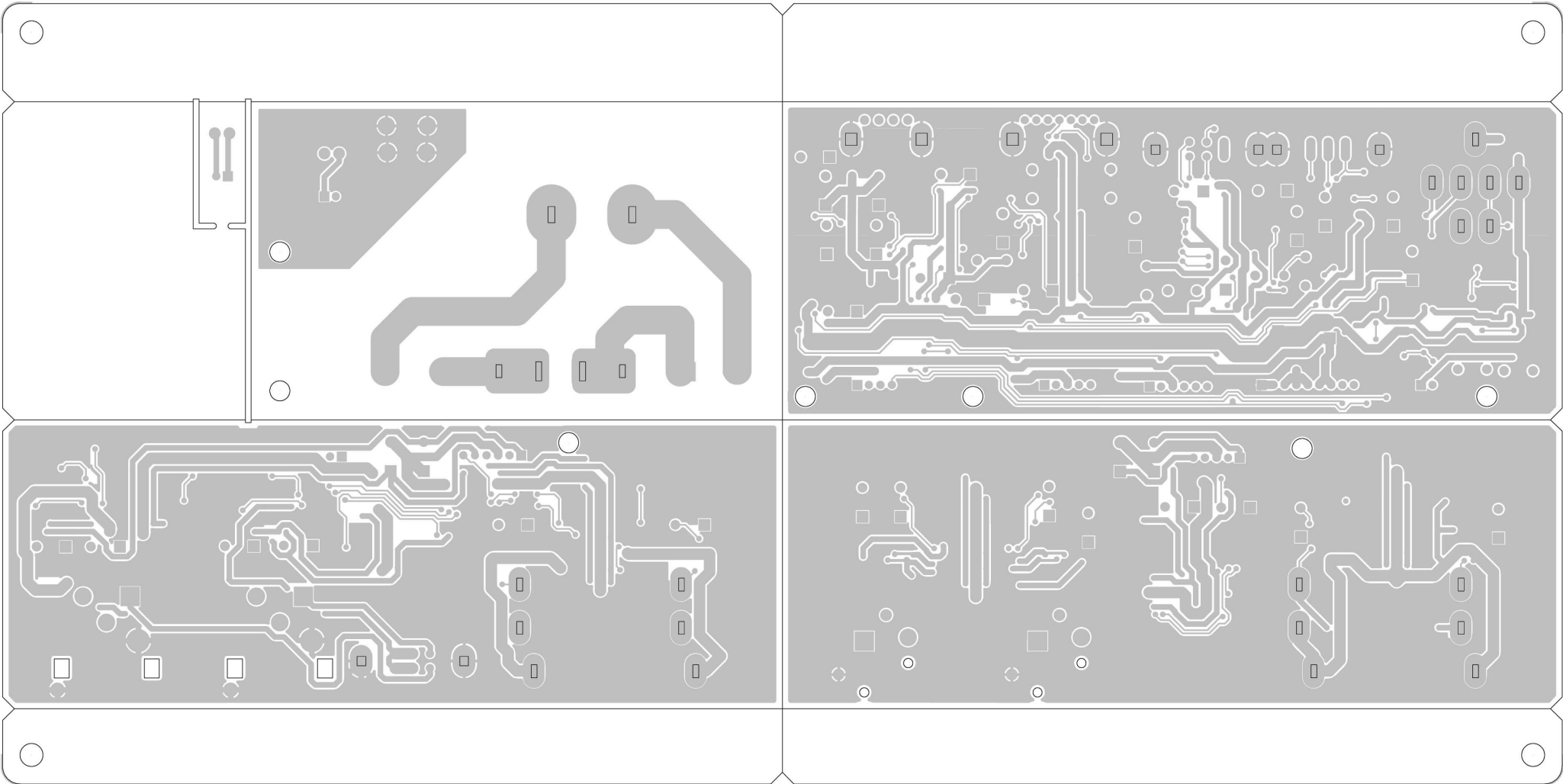


CIRCUIT BOARD(PRE BOARD)

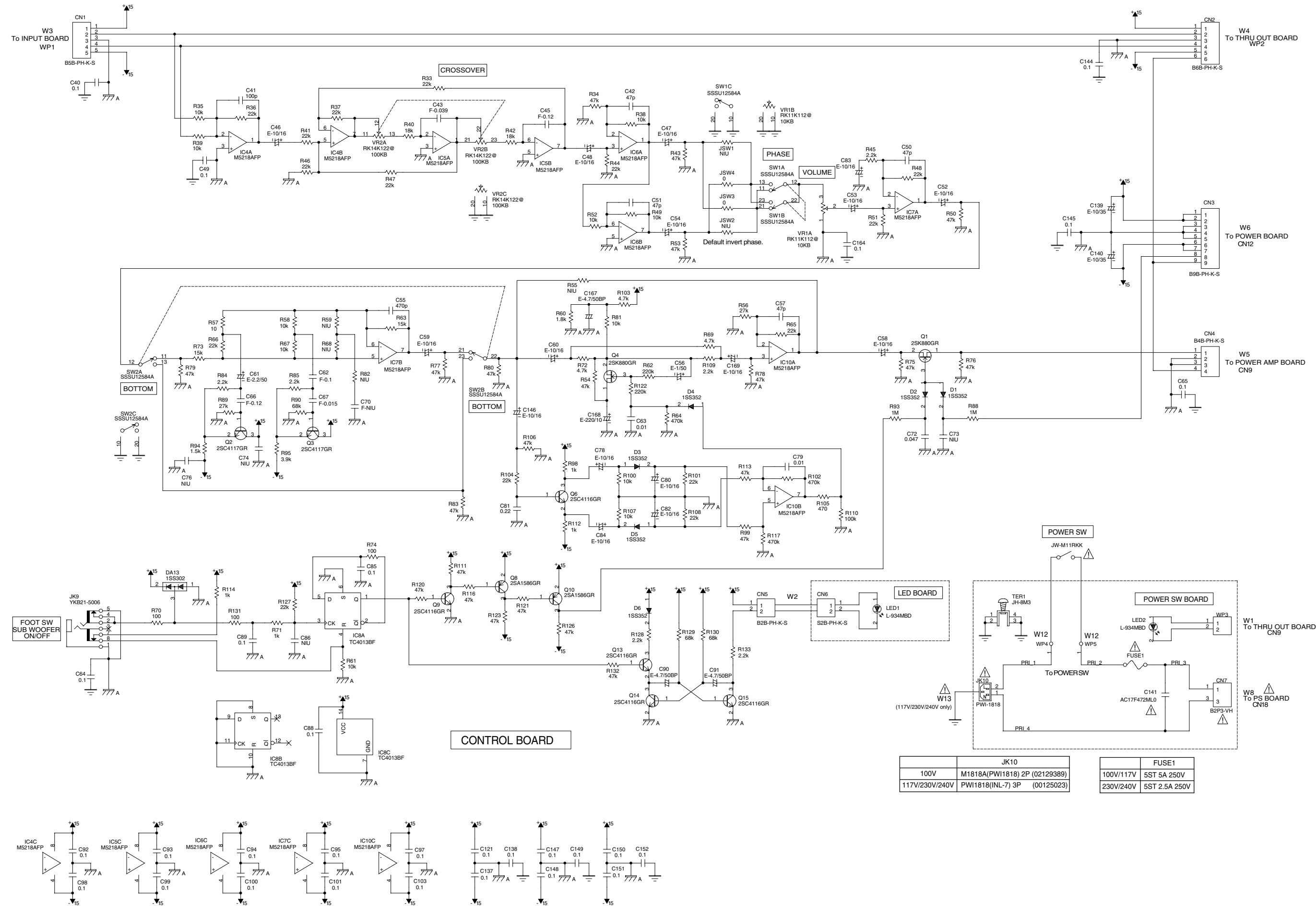


View from components side

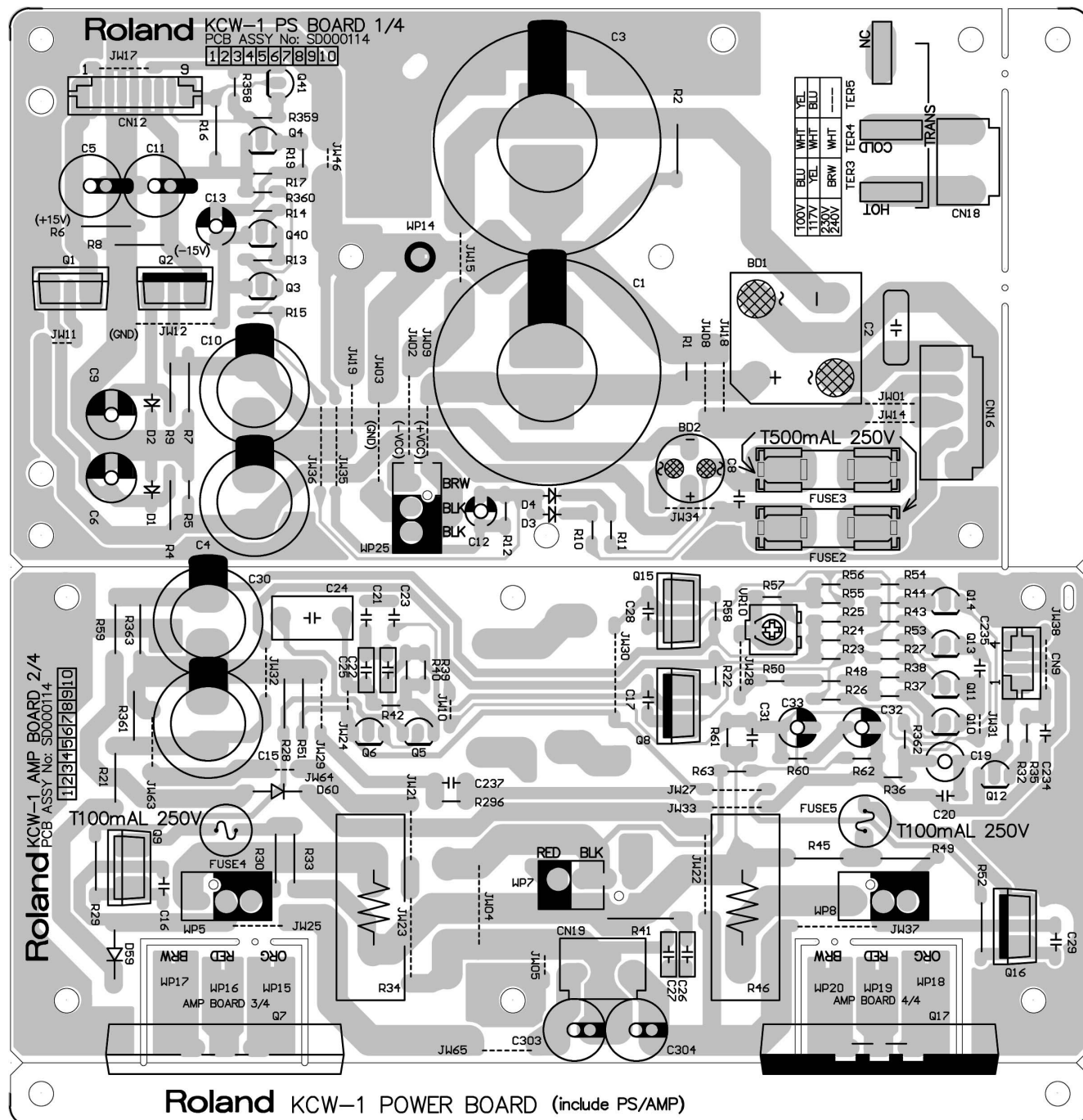
CIRCUIT BOARD(PRE BOARD)



View from foil side



CIRCUIT BOARD(POWER BOARD)



View from components side

CIRCUIT DIAGRAM(POWER BOARD)

