

PROFOG

K-300/DMX

Smoke-machine

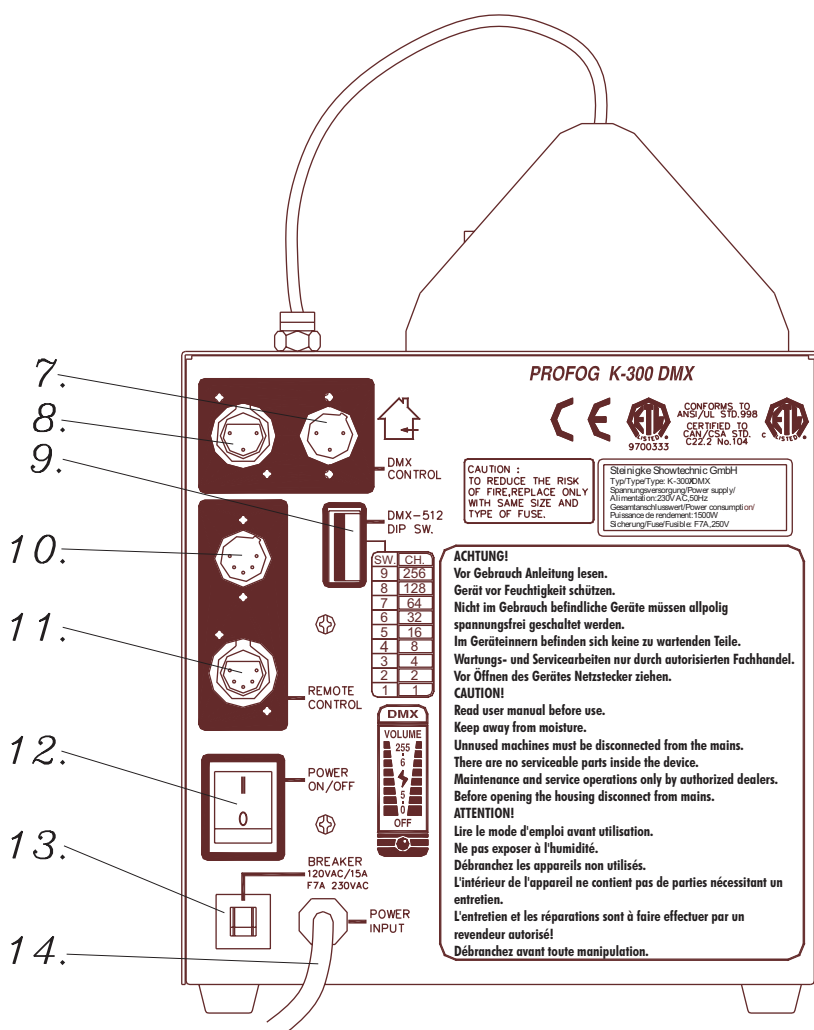
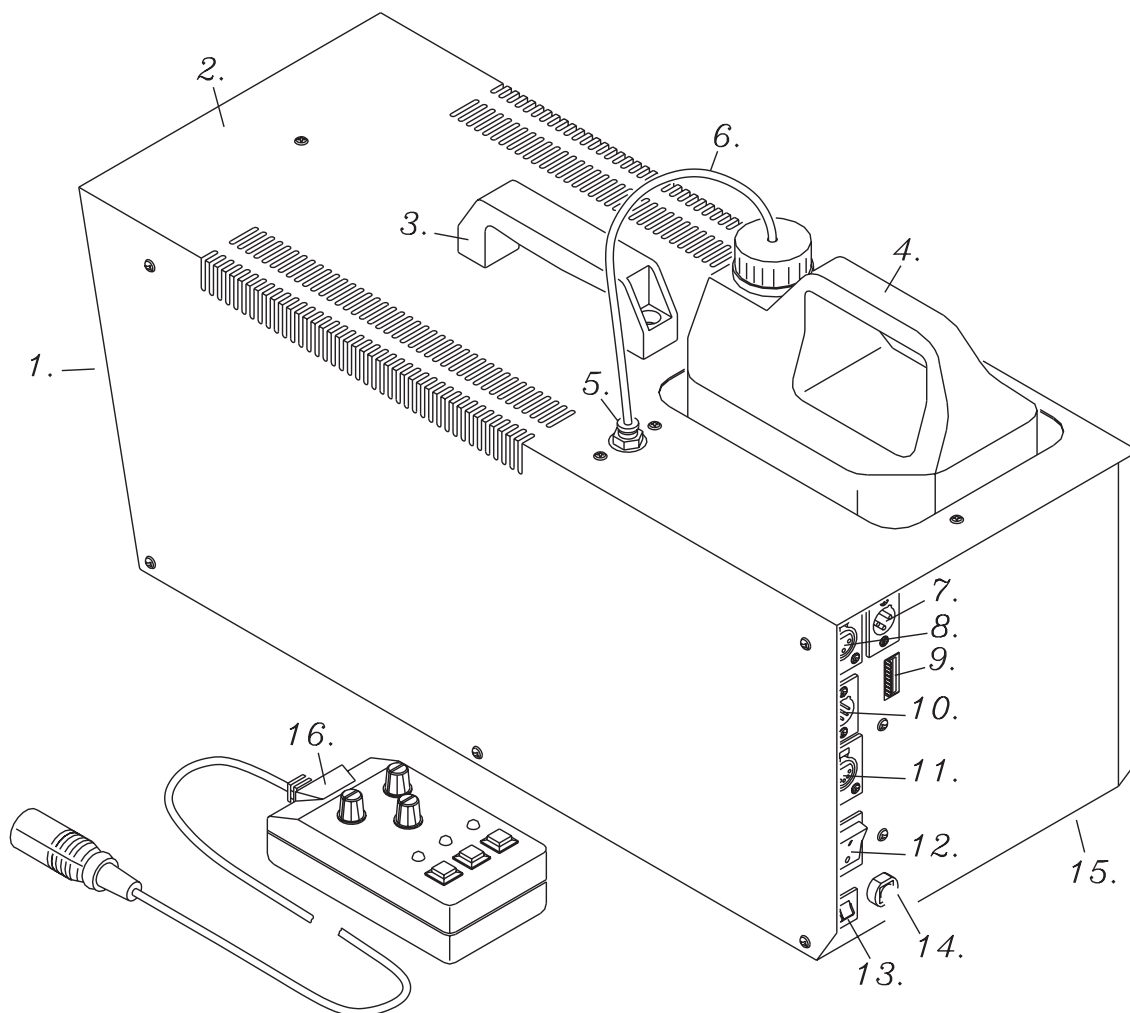
Service-manual

Serviceunterlagen

Documents techniques

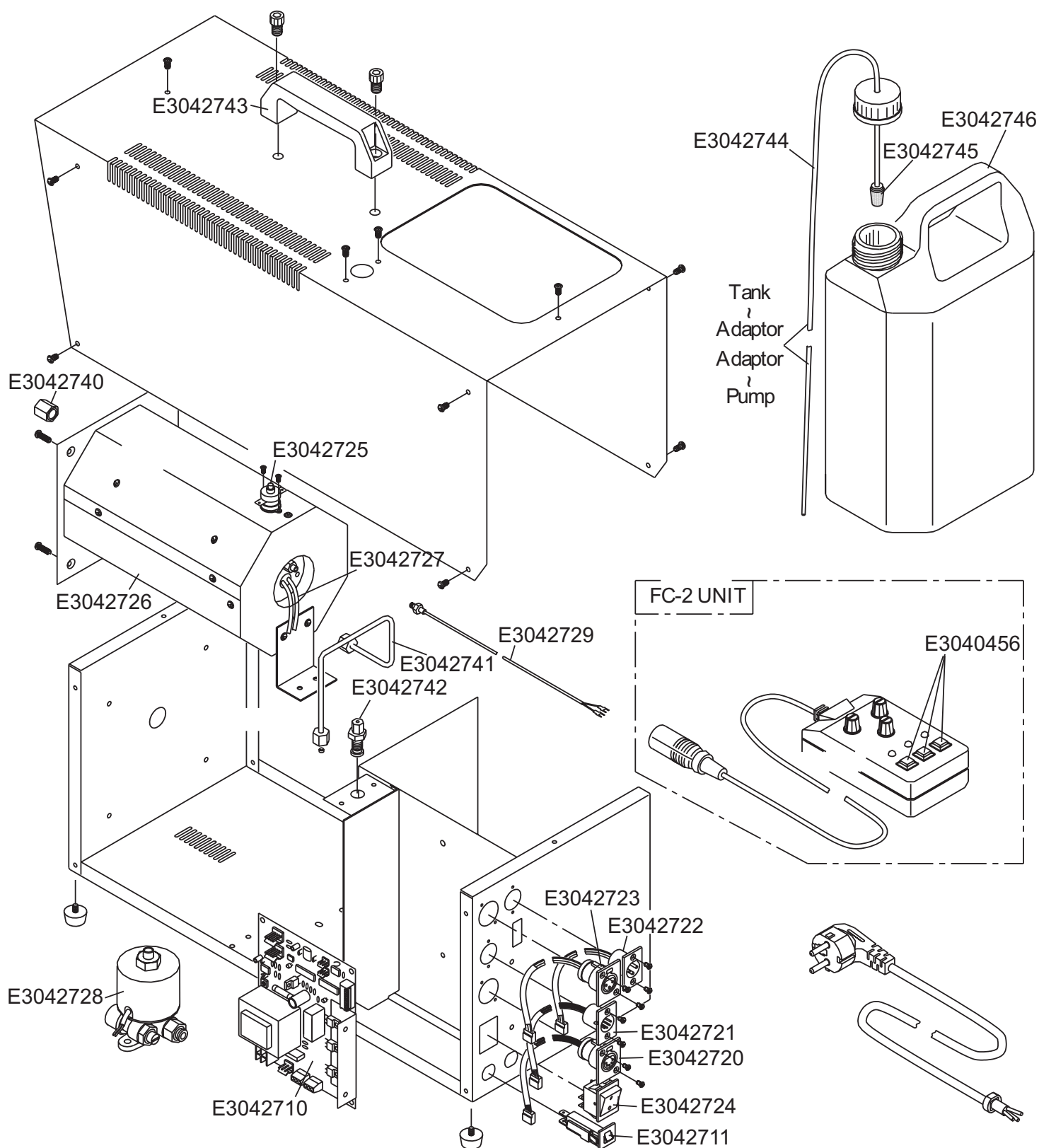
Documentos de servicio

Version 1.0



- (1) Escape nozzle
- (2) Housing
- (3) Transport handle
- (4) Fluid tank
- (5) Tube adaptor
- (6) Smoke tube
- (7) DMX Input-socket
- (8) DMX Output-socket
- (9) DIP-switches
- (10) Remote control-socket
- (11) Connection-socket
- (12) Power switch
- (13) Breaker
- (14) Power supply
- (15) Foot
- (16) Remote control

Exploded view PROFOG K-300/DMX



Spare-parts-list for PROFOG K-300/DMX

I. No.	Artikelbeschreibung	Article designation	Description d'article	Descripción del artículo
1 E3042710	Platine für K-300/DMX	PCB for K-300/DMX	Platine pour K-300/DMX	Platina para K-300/DMX
2 E3042711	Sicherung für K-300/DMX	Fuse for K-300/DMX	Fusible pour K-300/DMX	Fusible para K-300/DMX
3 E3042720	XLR-Einbaubuchse 5-polig für K-300/DMX	XLR-mounting socket 5-pins for K-300/DMX	XLR-douille encastrable à 5 pôles p.K-300	XLR-casqu.incorp. de 5 alfileres p.K-300
4 E3042721	XLR-Einbaustecker 5-polig für K-300/DMX	XLR-mounting plug 5-pins for K-300/DMX	Fiche-XLR encastrable à 5 pôles p. K-300	Clavija-XLR incorp.de 5 alfileres p.K-300
5 E3042722	XLR-Einbaustecker 3-polig für K-300/DMX	XLR-mounting plug 3-pins for K-300/DMX	Fiche-XLR encastrable à 3 pôles p. K-300	Clavija-XLR incorp.de 3 alfileres p.K-300
6 E3042723	XLR-Einbaubuchse 3-polig für K-300/DMX	XLR-mounting socket 3-pins for K-300/DMX	XLR-douille encastrable à 3 pôles p.K-300	XLR-casqu.incorp. de 3 alfileres p.K-300
7 E3042724	Netzschalter für K-300/DMX	Power-switch for K-300/DMX	Netzschalter für K-300/DMX	Netzschalter für K-300/DMX
8 E3042725	Thermosicherung für K-300/DMX	Thermofuse for K-300/DMX	Fusible thermique pour K-300/DMX	Termofusible para K-300/DMX
9 E3042726	Heizelement für K-300/DMX	Heating element for K-300/DMX	Corps de chauffe pour K-300/DMX	Calderín para K-300/DMX
10 E3042727	Heizstab für Heizelement K-300/DMX	Heating rod for heating element for K-300	Cartouche p.corps de chauffe p. K-300/DMX	Calentador p.calderín p. K-300/DMX
11 E3042728	Pumpe für K-300/DMX	Pump for K-300/DMX	Pompe pour K-300/DMX	Bomba K-300/DMX
12 E3042729	Thermofühler für K-300/DMX	Thermal sensor for K-300/DMX	Sonde thermique pour K-300/DMX	Termosensor para K-300/DMX
13 E3042740	Düse für K-300/DMX	Nozzle for K-300/DMX	Buse pour K-300/DMX	Tobera para K-300/DMX
14 E3042741	Verbindungsrohr für K-300/DMX	Connector for K-300/DMX	Conduit connecteur pour K-300/DMX	Conducto conector para K-300/DMX
15 E3042742	Adapter f. Fluidschlauch K-300/DMX	Adaptor for fluid tube K-300/DMX	Adaptateur pour tuyau K-300/DMX	Adaptador para tubo K-300/DMX
16 E3042743	Griff für K-300/DMX	Handle for K-300/DMX	Poignée pour K-300/DMX	Asa para K-300/DMX
17 E3042744	Fluidschlauch für K-300/DMX	Fluid-tube for K-300/DMX	Tuyau de liquide pour K-300/DMX	Tubo de líquido para K-300/DMX
18 E3042745	Fluidfilter für K-300/DMX	Fluid filter for K-300/DMX	Filtre de liquide p. K-300/DMX	Filtro de líquido p. K-300/DMX
19 E3042746	Fluidbehälter für K-300/DMX	Fluid tank for K-300/DMX	Réservoir pour K-300/DMX	Receptáculo para K-300/DMX
20 E3040382	Batterie für Funkfernsteuerung	Battery for wireless remote control	Pile pour télécommande sans fil	Pila para telemedida sin hilo
21 E3040456	Schalter für Timerfernbedienung	Switch for timer remote-control	Interrupteur pour télécommande timer	Interruptor para telemedida timer

K-300 Wire Assortment Diagram

