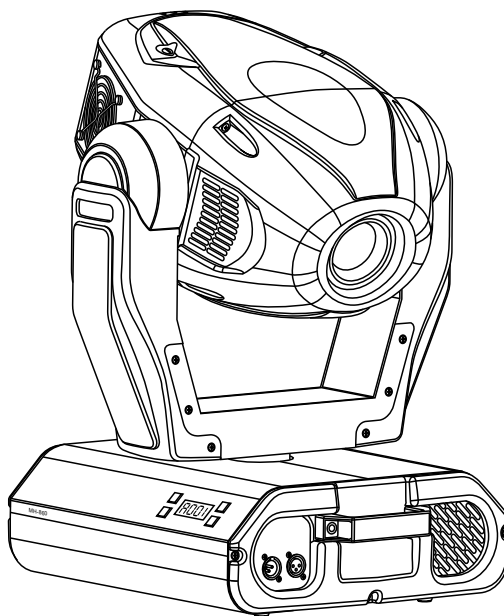
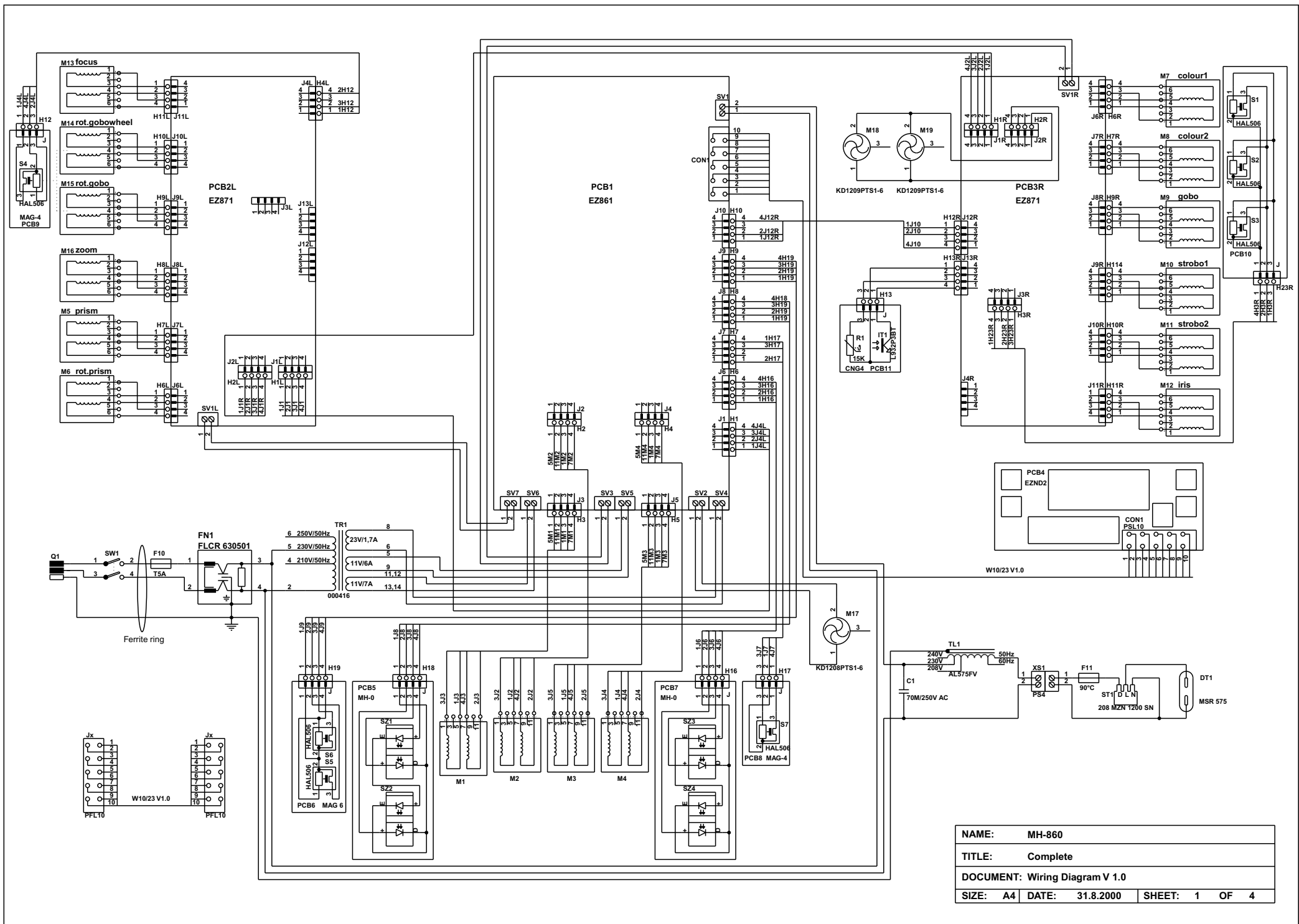


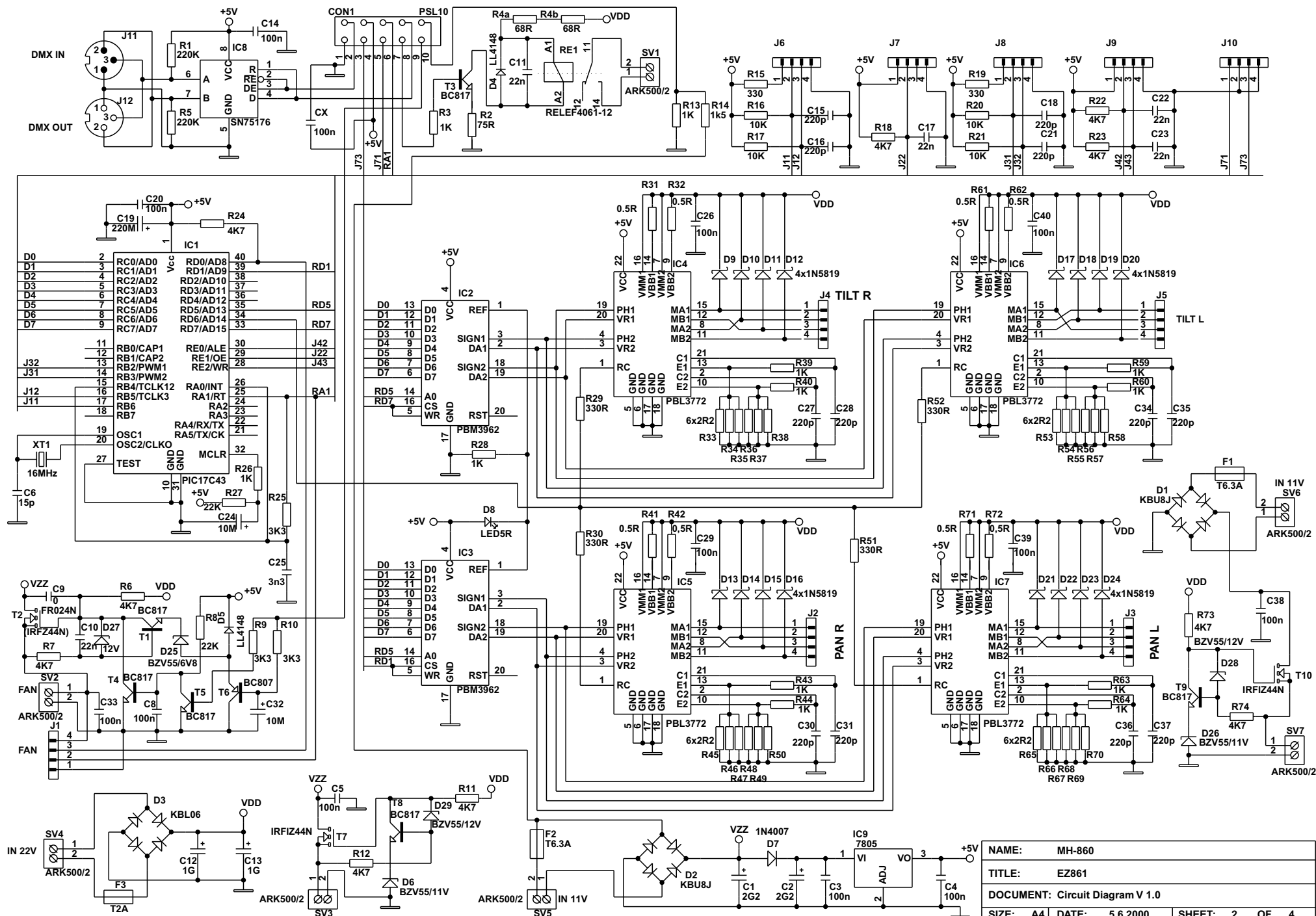


# Service manual V 1



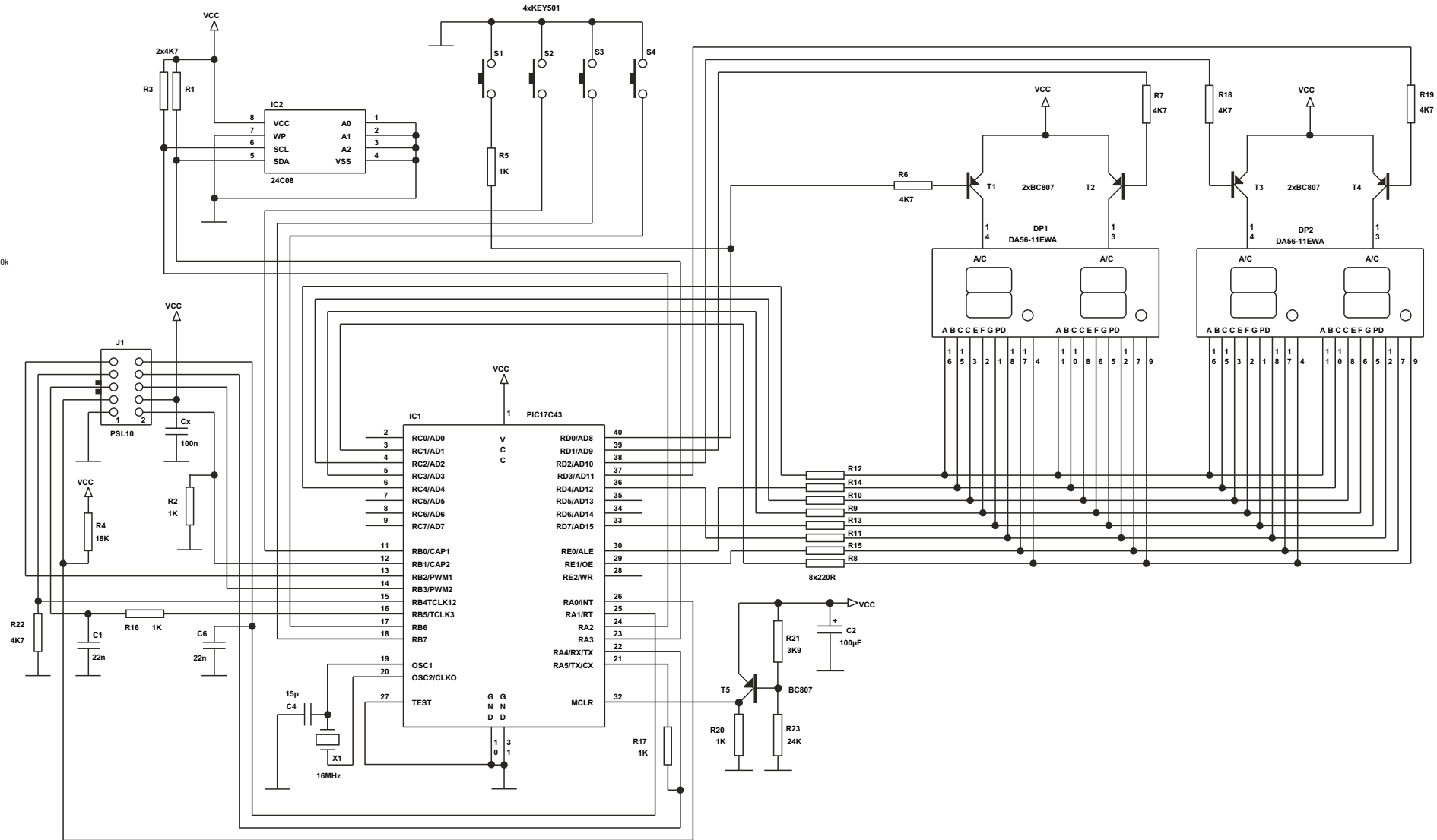
**MH - 860 Spotlight**



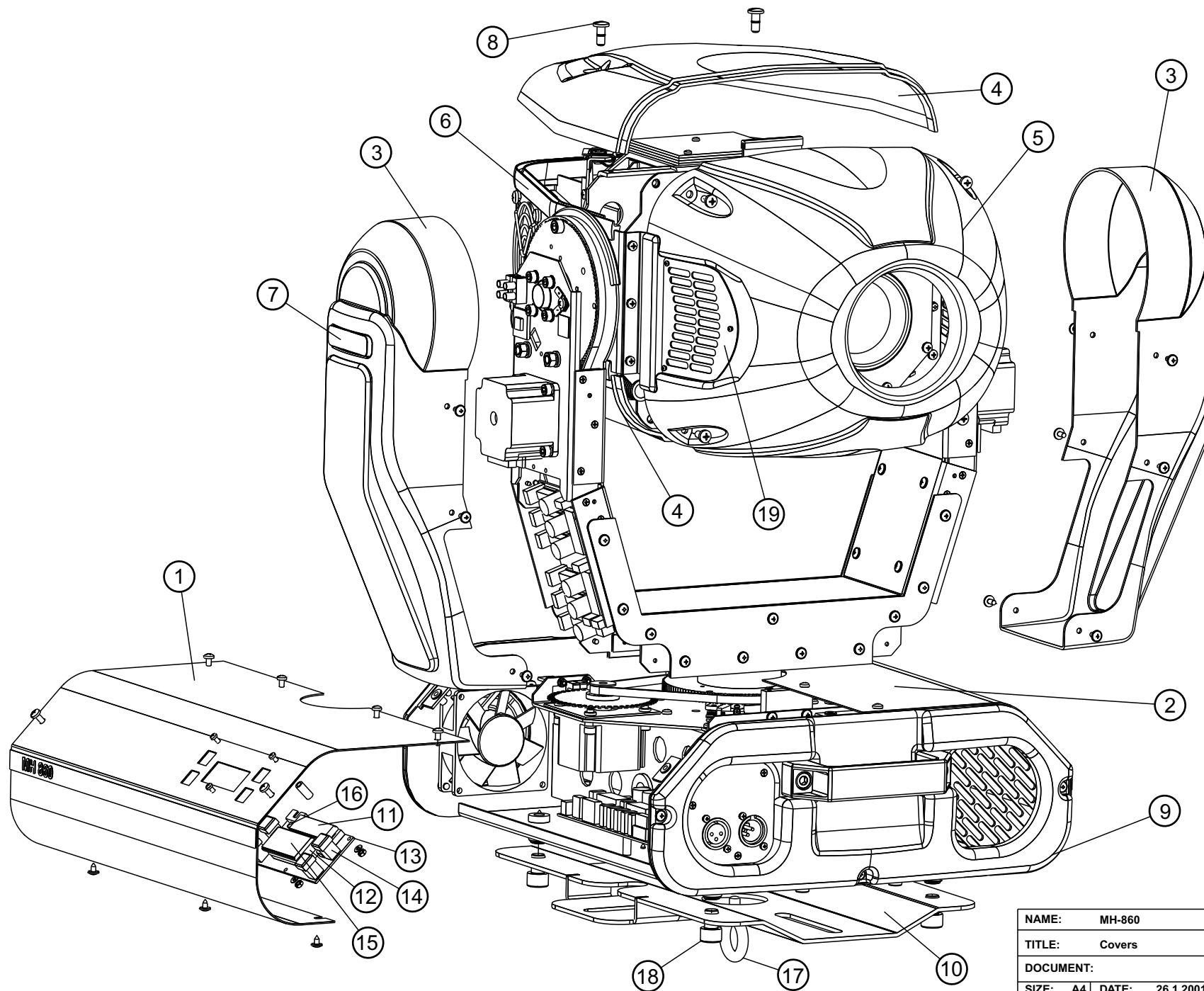




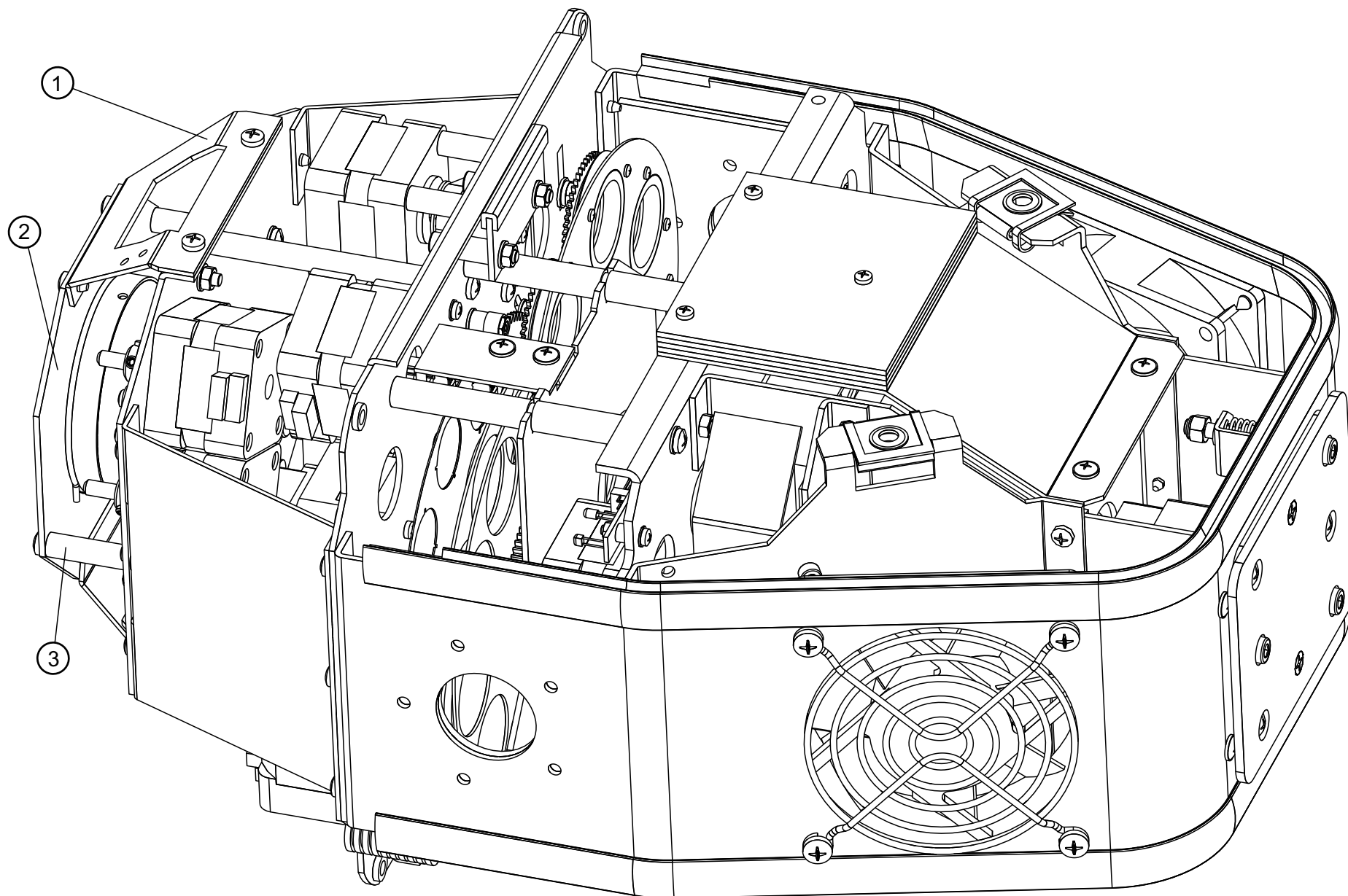
1. GND
2. DMX DIRECTION
3. LAMP SENSOR
4. VCC +5V
5. THERMISTOR 20°C = 15k, 37°C = 10k
6. INTERNAL DATA
7. LAMP ON/OFF
8. DMX DATA
9. FAN PWM OUT
10. 50Hz IN



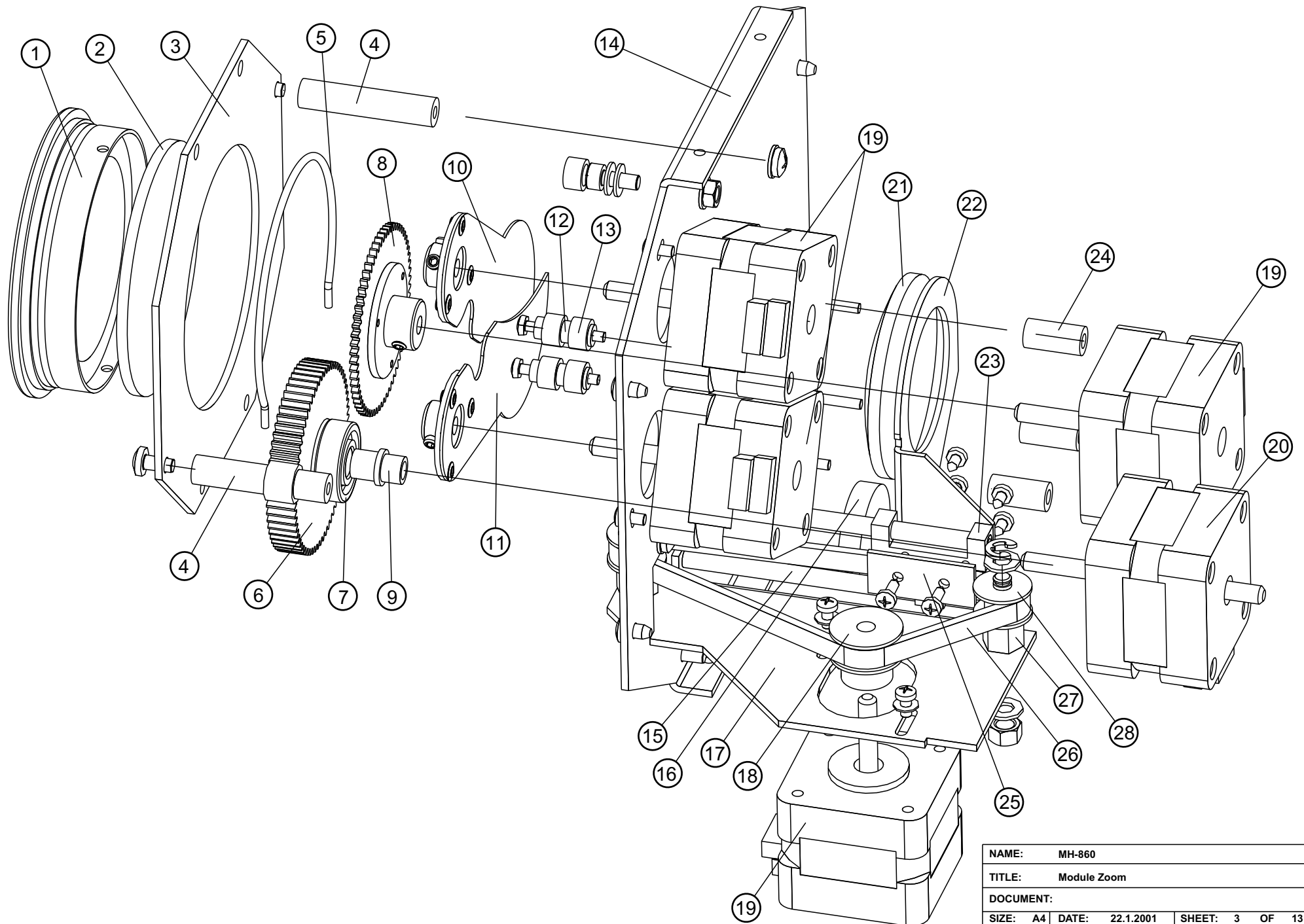
NAME:	MH-860
TITLE:	EZND21
DOCUMENT:	Circuit Diagram SMD V 4
SIZE:	A4
DATE:	24.5.2000
SHEET:	4 OF 4



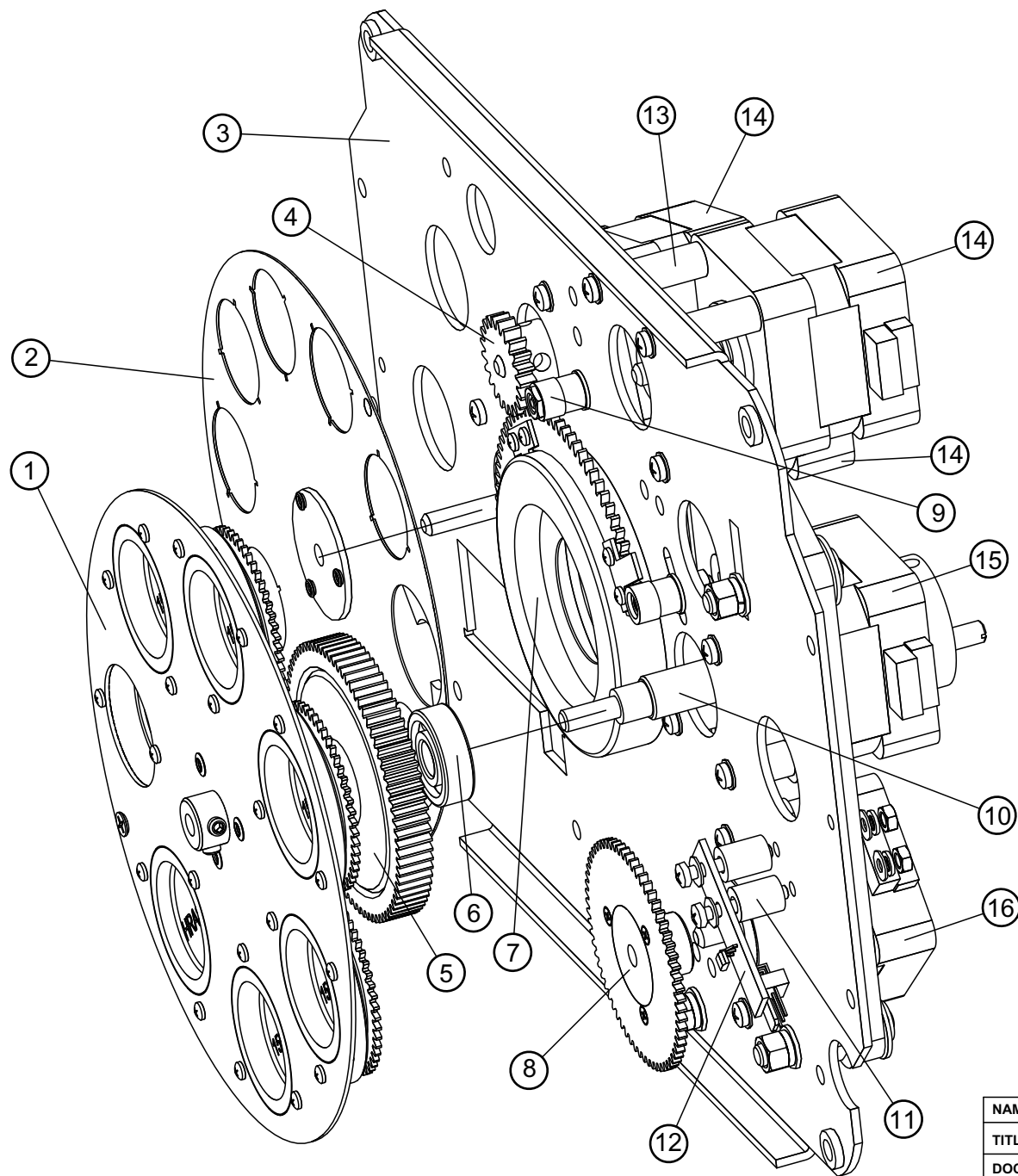
NAME:	MH-860
TITLE:	Covers
DOCUMENT:	
SIZE:	A4
DATE:	26.1.2001
SHEET:	1 OF 13



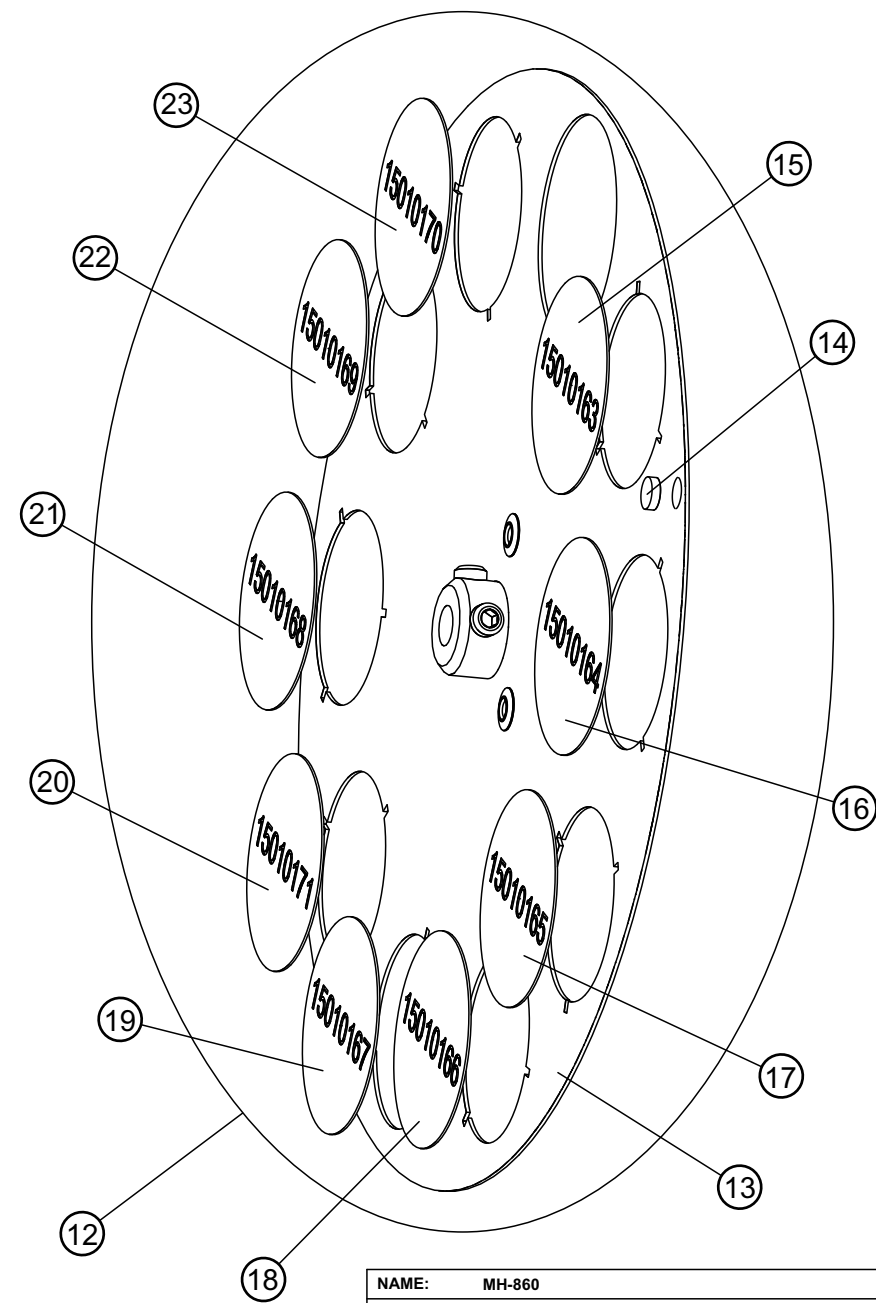
NAME:		MH-860		
TITLE:		Head - assembled state		
DOCUMENT:				
SIZE:	A4	DATE:	22.1.2001	SHEET: 2 OF 13



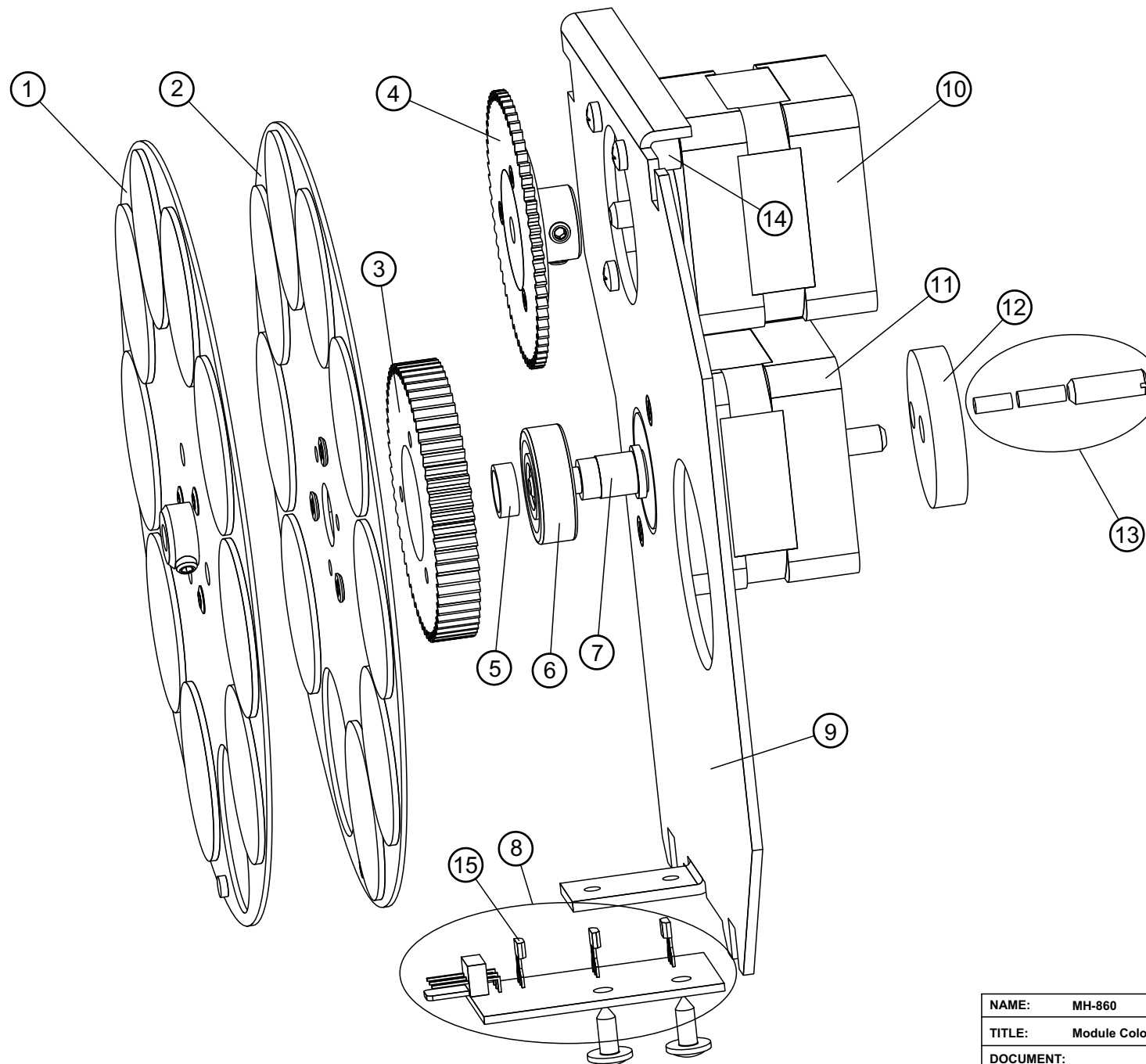
NAME:	MH-860
TITLE:	Module Zoom
DOCUMENT:	
SIZE:	A4
DATE:	22.1.2001
SHEET:	3 OF 13



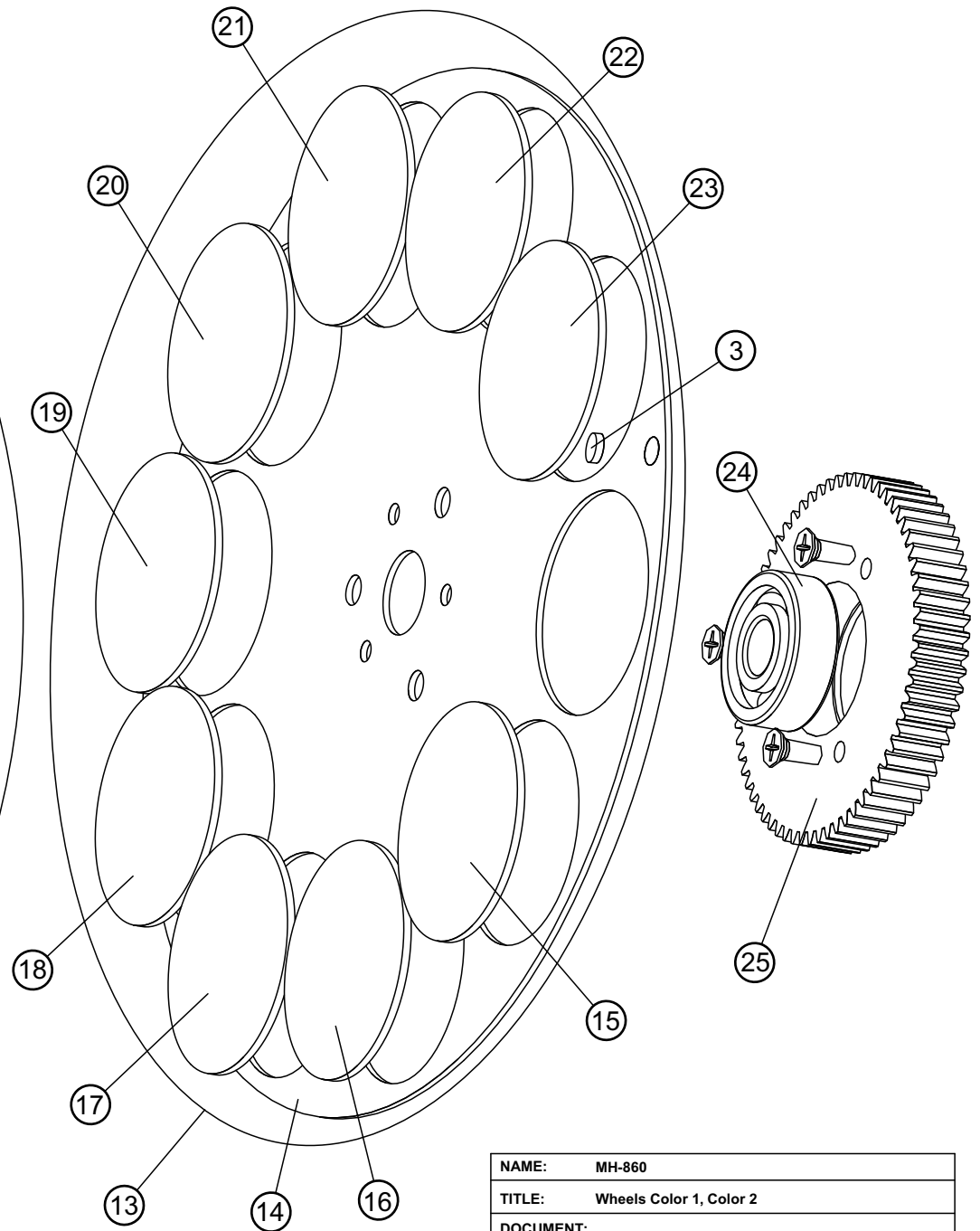
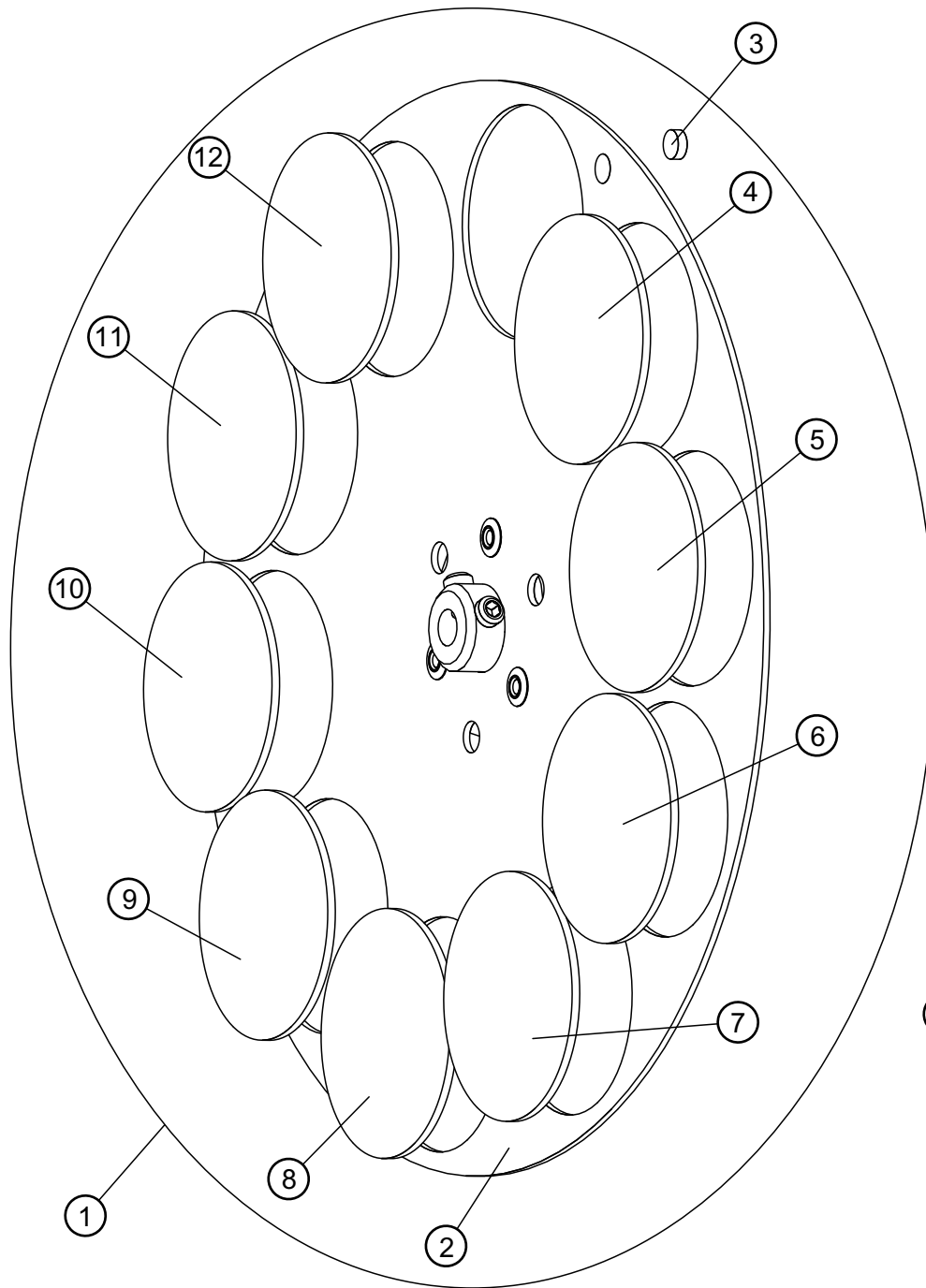
NAME:		MH-860	
TITLE:		Module Gobo	
DOCUMENT:			
SIZE:	A4	DATE:	22.1.2001
SHEET:	4	OF	13



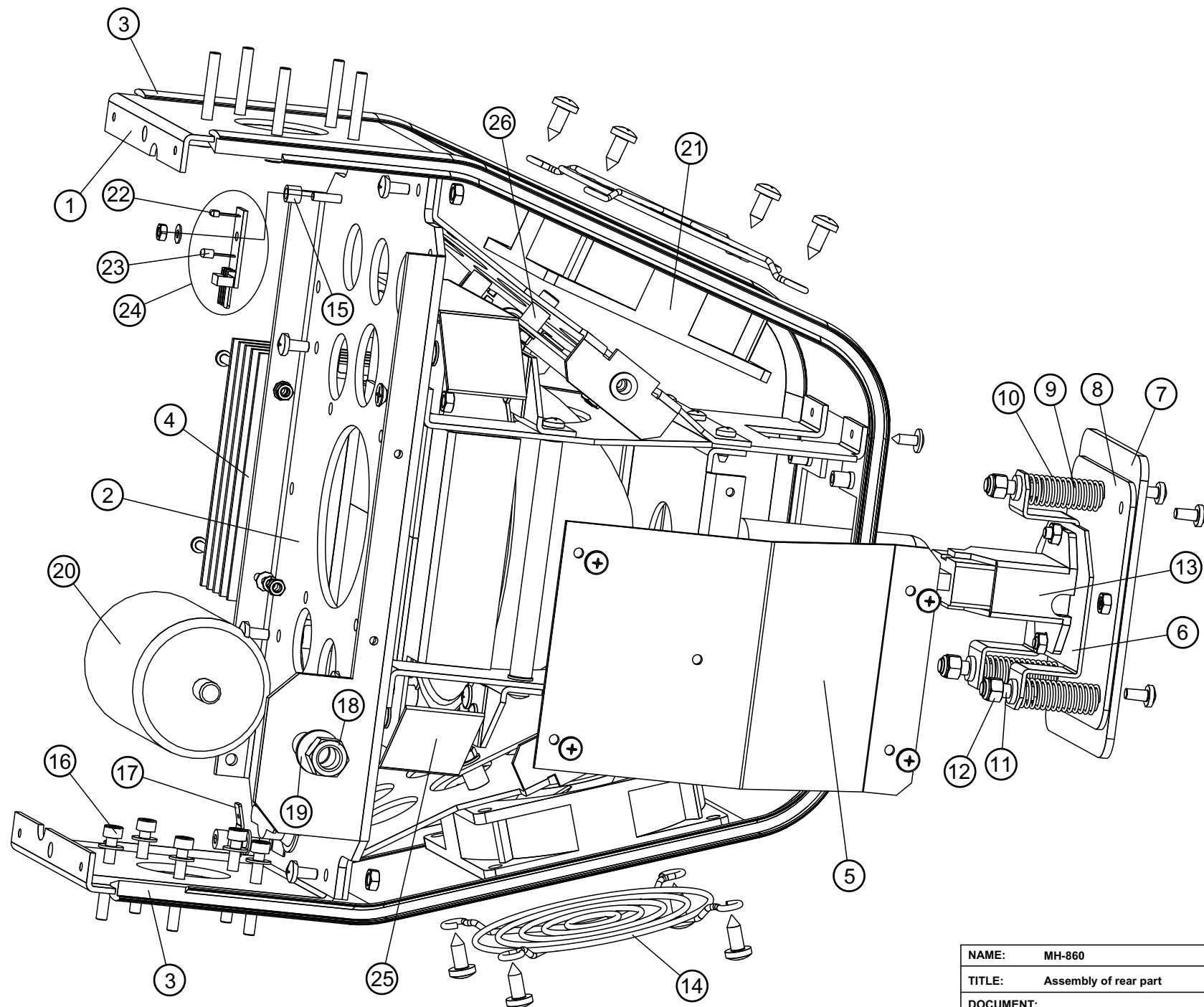
<b>NAME:</b>		MH-860	
<b>TITLE:</b>		Wheels Gobo R 6+1, Gobo S 9+1	
<b>DOCUMENT:</b>			
<b>SIZE:</b>	A4	<b>DATE:</b>	8.2.2001
<b>SHEET:</b>	5	<b>OF</b>	13



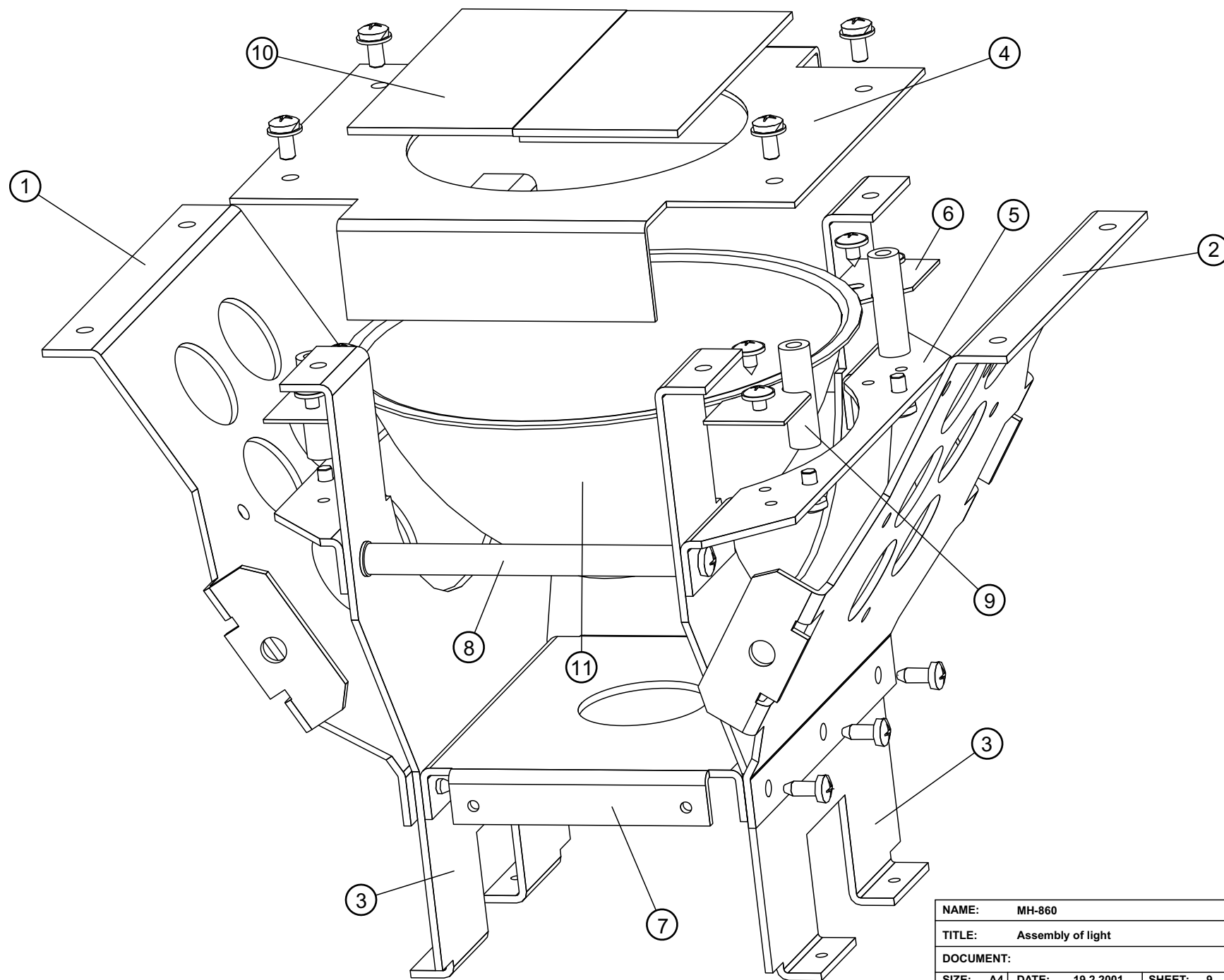
NAME:	MH-860
TITLE:	Module Colour
DOCUMENT:	
SIZE:	A4
DATE:	19.2.2001
SHEET:	6 OF 13



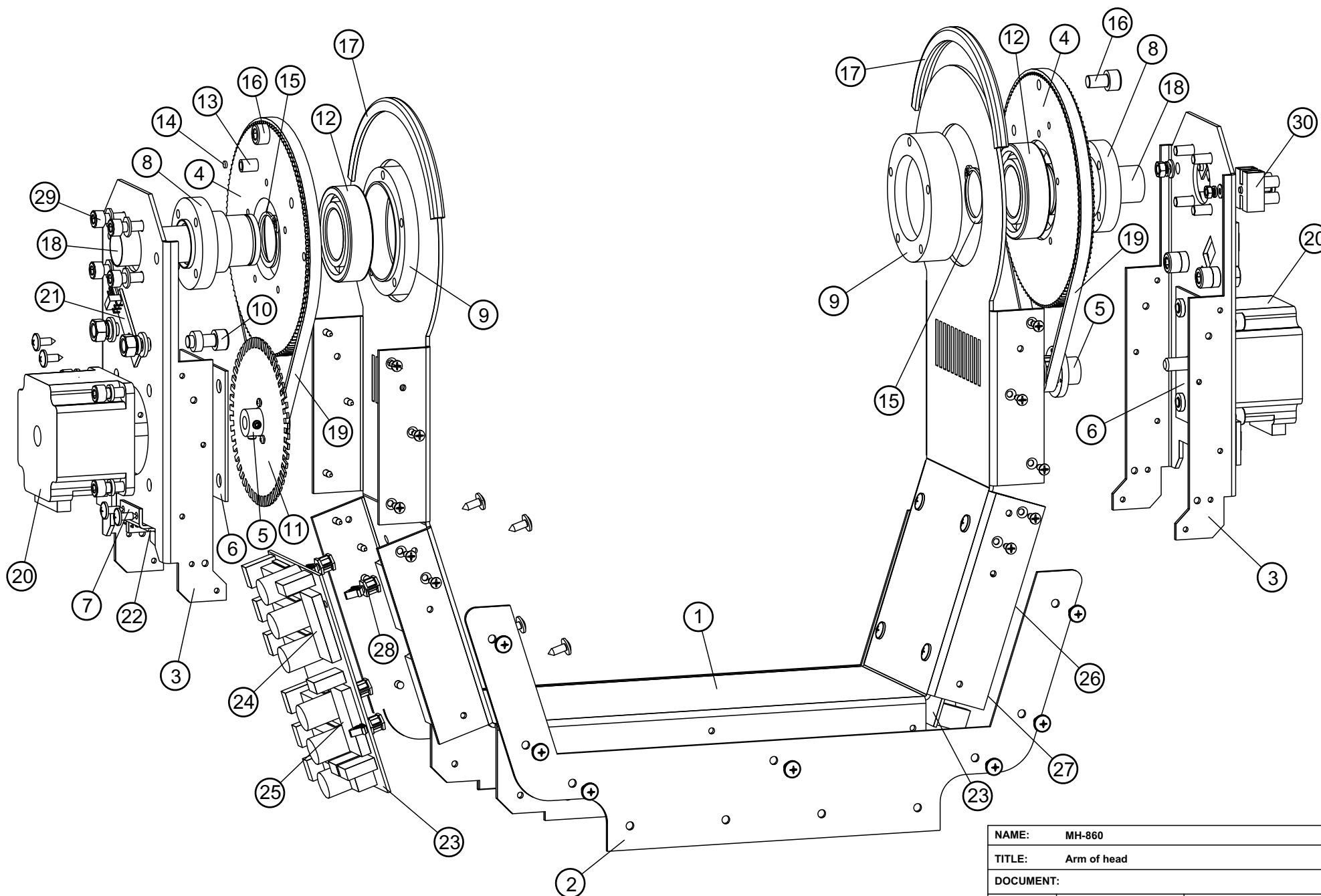
NAME:		MH-860		
TITLE:		Wheels Color 1, Color 2		
DOCUMENT:				
SIZE:	A4	DATE:	19.2.2001	SHEET: 7 OF 13



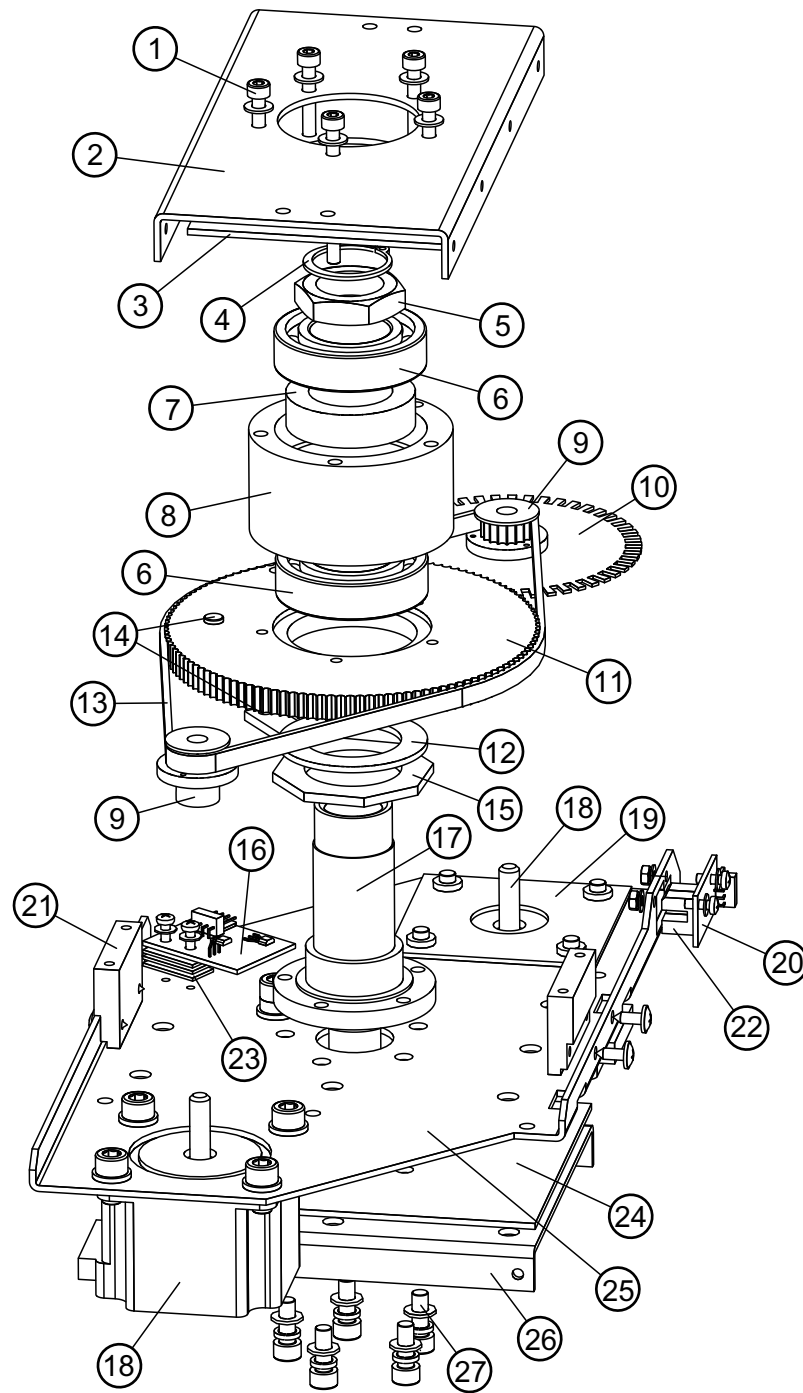
NAME:	MH-860		
TITLE:	Assembly of rear part		
DOCUMENT:			
SIZE:	A4	DATE:	22.2.2001
SHEET:	8	OF	13



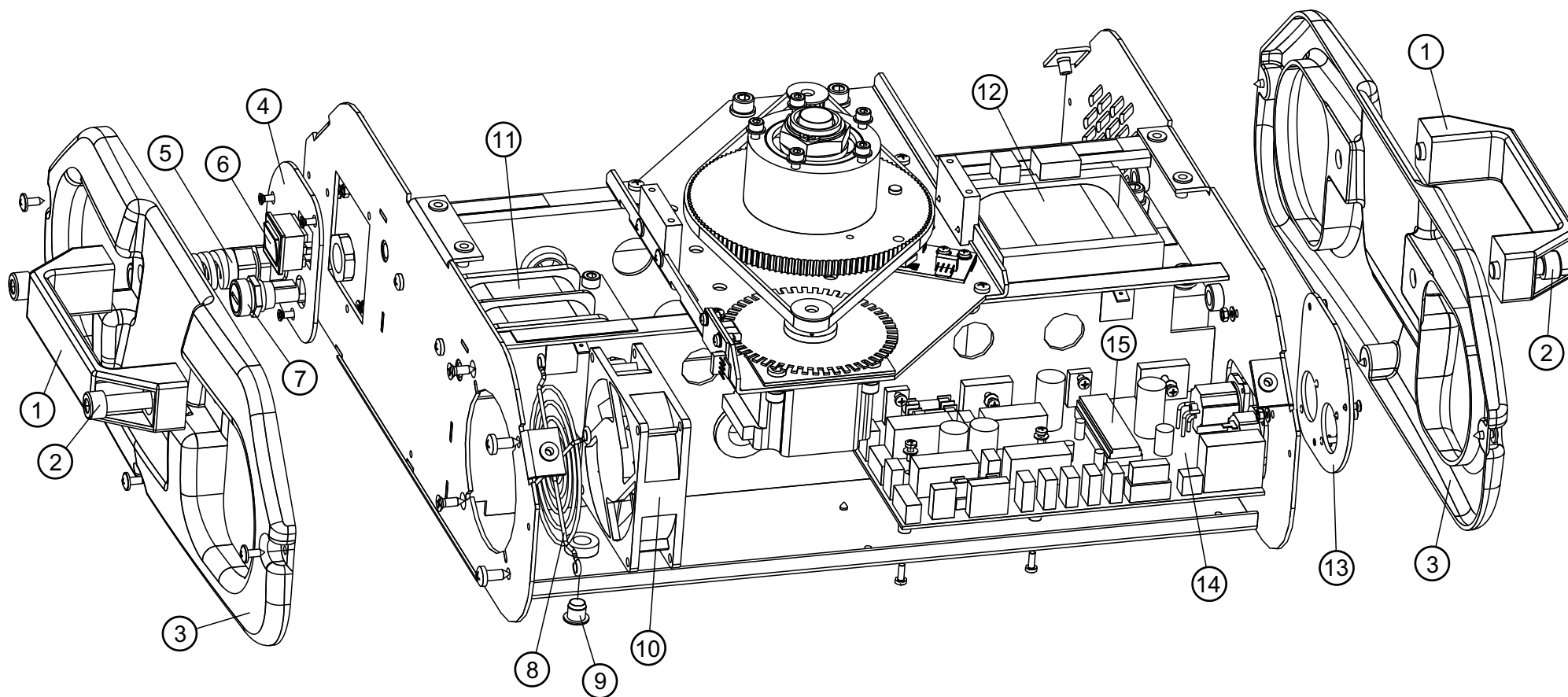
NAME:		MH-860		
TITLE:		Assembly of light		
DOCUMENT:				
SIZE:	A4	DATE:	19.2.2001	SHEET: 9 OF 13



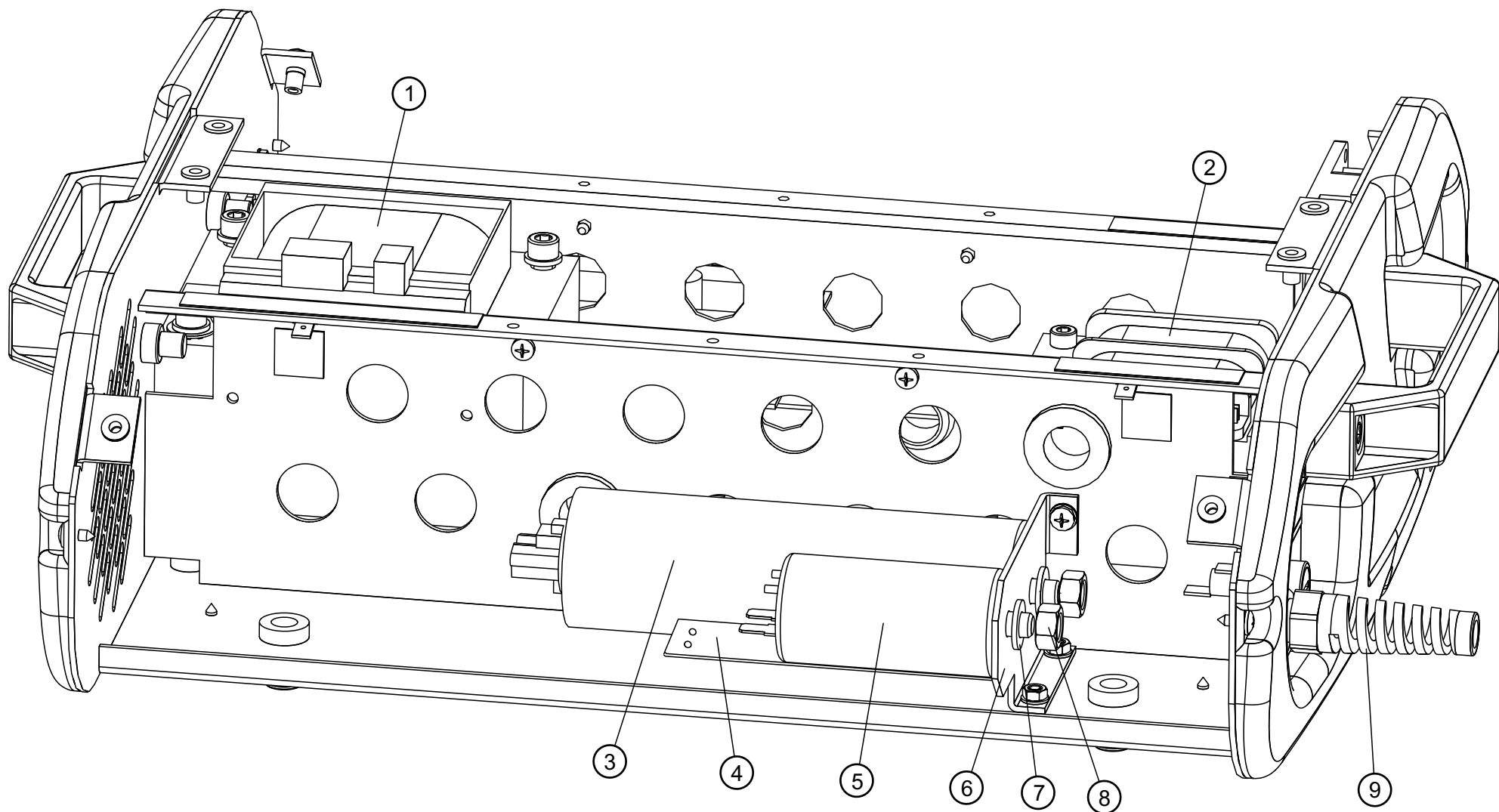
NAME:		MH-860		
TITLE:		Arm of head		
DOCUMENT:				
SIZE:	A4	DATE:	22.1.2001	SHEET: 10 OF 13



NAME:	MH-860
TITLE:	Axe "X"
DOCUMENT:	
SIZE:	A4
DATE:	19.2.2001
SHEET:	11 OF 13



NAME:		MH-860		
TITLE:		Base - part 1		
DOCUMENT:				
SIZE:	A4	DATE:	21.2.2001	SHEET: 12 OF 13



NAME:		MH-860		
TITLE:		Base - part 2		
DOCUMENT:				
SIZE:	A4	DATE:	21.2.2001	SHEET: 13 OF 13

## Spare-parts MH-860

No.	Designation - German	Designation - English	Designation - French	Designation - Spanish	Sheet/Pos.
<b>89107010</b>	OSRAM HSR 575/2 95V/575W GX-9,5 750h	OSRAM HSR 575/2 95V/575W GX-9.5 750h	OSRAM HSR 575/2 95V/575W GX-9.5 750h	OSRAM HSR 575/2 95V/575W GX-9.5 750h	
<b>89107015</b>	PHILIPS MSR575/2 95V/575W GX-9,5 1000h	PHILIPS MSR575/2 95V/575W GX-9.5 1000h	PHILIPS MSR575/2 95V/575W GX-9.5 1000h	PHILIPS MSR575/2 95V/575W GX-9.5 1000h	
<b>E3121437</b>	Griff	Handle	Poignée	Asa	12/1
<b>E3124210</b>	IC PIC 17C43-16/P für MH-860 IC1	IC PIC 17C43-16/P for MH-860 IC1	IC PIC 17C43-16/P pour MH-860 IC1	IC PIC 17C43-16/P para MH-860 IC1	12/15
<b>E3124211</b>	IC 24C08 EEPROM für MH-860 (V1.0) IC2	IC 24C08 EEPROM for MH-860 (V1.0) IC2	IC 24C08 EEPROM pour MH-860 (V1.0) IC2	IC 24C08 EEPROM para MH-860 (V1.0) IC2	1/16
<b>E3124215</b>	IC PIC 16C57C-20/P IC1 L für MH-860	IC PIC 16C57C-20/P IC1 L for MH-860	IC PIC 16C57C-20/P IC1 L pour MH-860	IC PIC 16C57C-20/P IC1 L para MH-860	10/27
<b>E3124216</b>	IC PIC 16C57C-20/P IC2 L für MH-860	IC PIC 16C57C-20/P IC2 L for MH-860	IC PIC 16C57C-20/P IC2 L pour MH-860	IC PIC 16C57C-20/P IC2 L para MH-860	10/26
<b>E3124217</b>	IC PIC 16C57C-20/P IC1 R für MH-860	IC PIC 16C57C-20/P IC1 R for MH-860	IC PIC 16C57C-20/P IC1 R pour MH-860	IC PIC 16C57C-20/P IC1 R para MH-860	10/25
<b>E3124218</b>	IC PIC 17C43-16/P DS V2.1/IC1 für MH-860	IC PIC 17C43-16/P DS V2.1/IC1 for MH-860	IC PIC 17C43-16/P DS V2.1/IC1 pour MH-860	IC PIC 17C43-16/P DS V2.1/IC1 para MH-860	1/11
<b>E3124219</b>	IC PIC 16C57C-20/P IC2 R für MH-860	IC PIC 16C57C-20/P IC2 R for MH-860	IC PIC 16C57C-20/P IC2 R pour MH-860	IC PIC 16C57C-20/P IC2 R para MH-860	10/24
<b>E3124220</b>	Platine für MH-860	PCB for MH-860	Platine pour MH-860	Platina para MH-860	12/14
<b>E3124222</b>	Platine für MH-860 Bedieneinheit	PCB for MH-860 remote control	Platine pour MH-860 télécommande	Platina para MH-860 telemedida	1/13
<b>E3124223</b>	Platine für MH-860 Motorsteuerung	PCB for MH-860 motor-control	Platine pour contrôl de moteur p. MH-860	Platina para control de motor p. MH-860	10/23
<b>E3124230</b>	Linse 18°für MH-860	Lens 18° for MH-860	Lentille 18° pour MH-860	Lente 18° para MH-860	
<b>E3124231</b>	Linse 22°für MH-860	Lens 22° for MH-860	Lentille 22° pour MH-860	Lente 22° para MH-860	
<b>E3124232</b>	Linse für Fokus MH-860	Focus lens for MH-860	Lentille de foyer pour MH-860	Lente de foco para MH-860	3/21
<b>E3124233</b>	Objektivlinse für MH-860	Objectiv-lens for MH-860	Objectif pour MH-860	Objetivo para MH-860	3/2
<b>E3124234</b>	Reflektor für MH-860	Reflector for MH-860	Réflecteur pour MH-860	Reflector para MH-860	9/11
<b>E3124260</b>	Zahnriemen für Kopfbewegung MH-860 (PAN)	Toothed-belt f.head-movement MH-860 (PAN)	Courroie dentée mouvement tête MH-860 PAN	Correa dentada p.movimien. de cabeza(PAN)	11/13
<b>E3124261</b>	Zahnriemen für Kopfbewegung MH-860 (TILT)	Toothed-belt f.head-movement MH-860(TILT)	Courroie dentée movem. tête MH-860 TILT	Correa dentada p.movimien.de cabeza(TILT)	10/19
<b>E3124270</b>	Lüfter für MH-860	Cooling fan for MH-860	Ventilateur pour MH-860	Ventilador para MH-860	12/10
<b>E3124273</b>	Trafo für MH-860	Transformer for MH-860	Transformateur pour MH-860	Transformador para MH-860	13/2
<b>E3124274</b>	Sockel für MH-860	Socket for MH-860	Douille pour MH-860	Casquillo para MH-860	8/13
<b>E3124275</b>	Starter für MH-860	Ignitor for MH-860	Starter pour scan MH-860	Encendedor para MH-860	8/20
<b>E3124278</b>	Drossel für MH-860	Ballast for MH-860	Ballast pour MH-860	Reactor para MH-860	13/1
<b>E3124290</b>	Gehäusedeckel für MH-860 (Projektorkopf)	Housing-lid for MH-860 (head)	Couvercle de boîtier p.MH-860 (tête)	Tapa de caja p. MH-860 (cabeza)	1/5
<b>E3124291</b>	Gehäuseabdeckung für MH-860	Housing-cover for MH-860	Gehäuseabdeckung für MH-860	Gehäuseabdeckung für MH-860	1/4
<b>E3124292</b>	Armaddeckung für MH-860	Cover of arm for MH-860	Couvercle de bras pour MH-860	Cubierta de brazo para MH-860	1/3