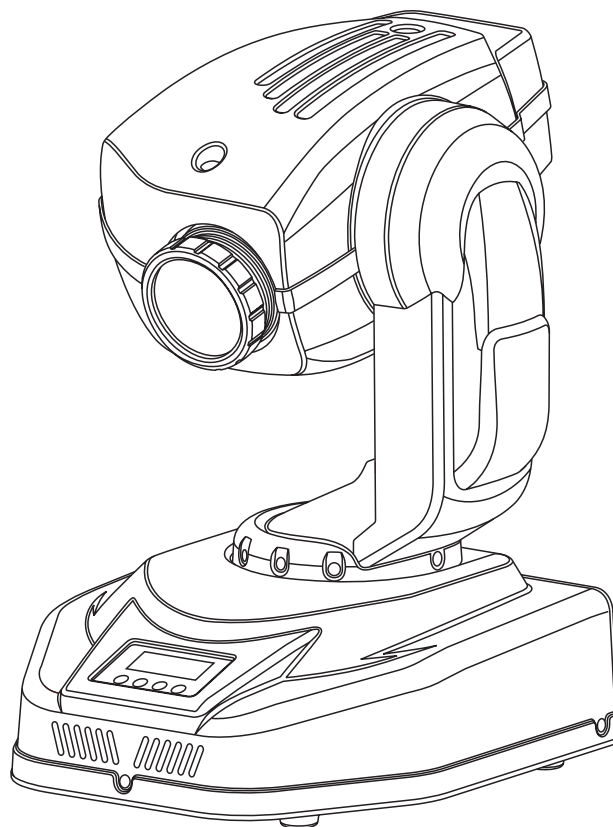
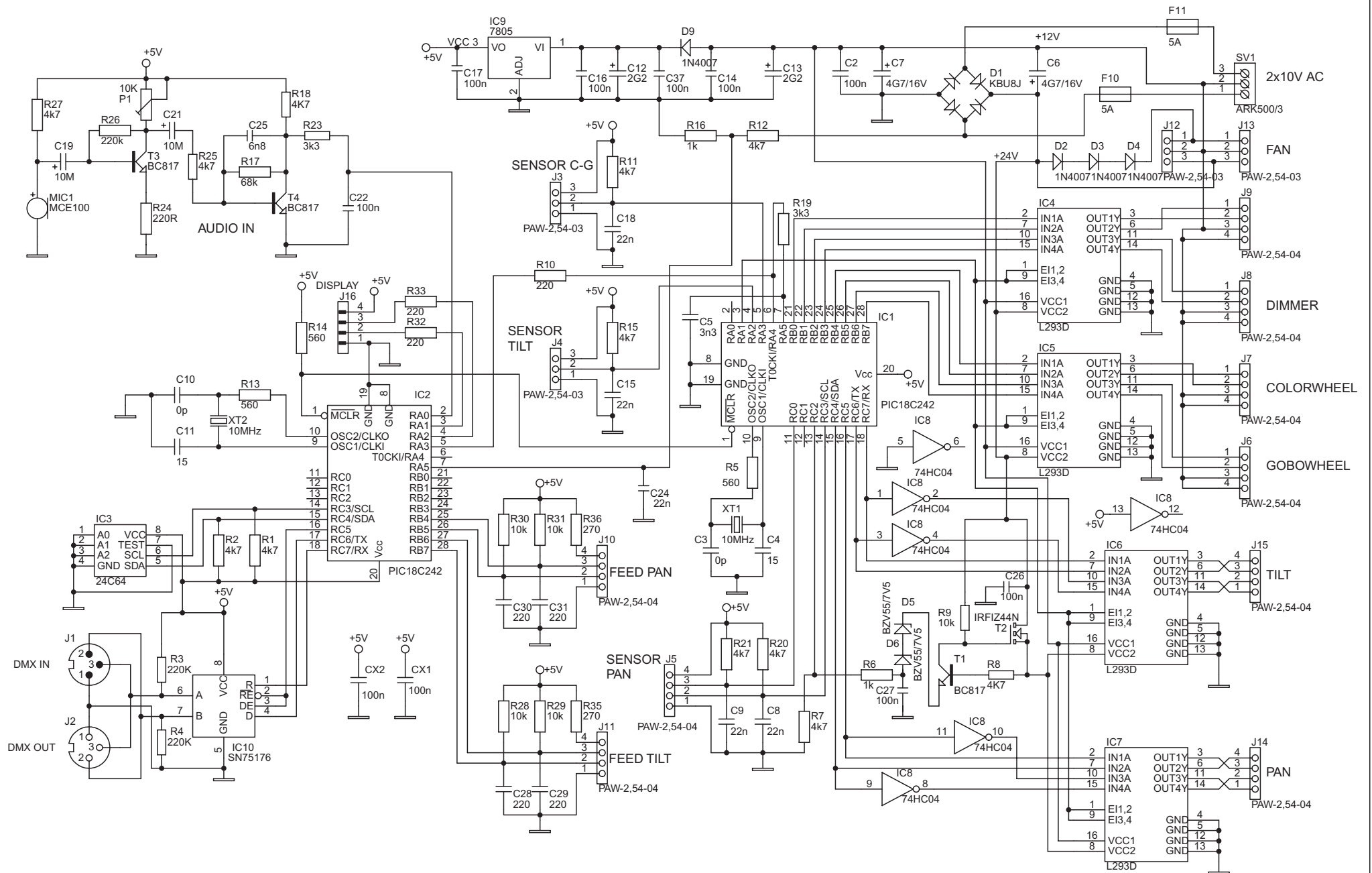


Service manual V 1

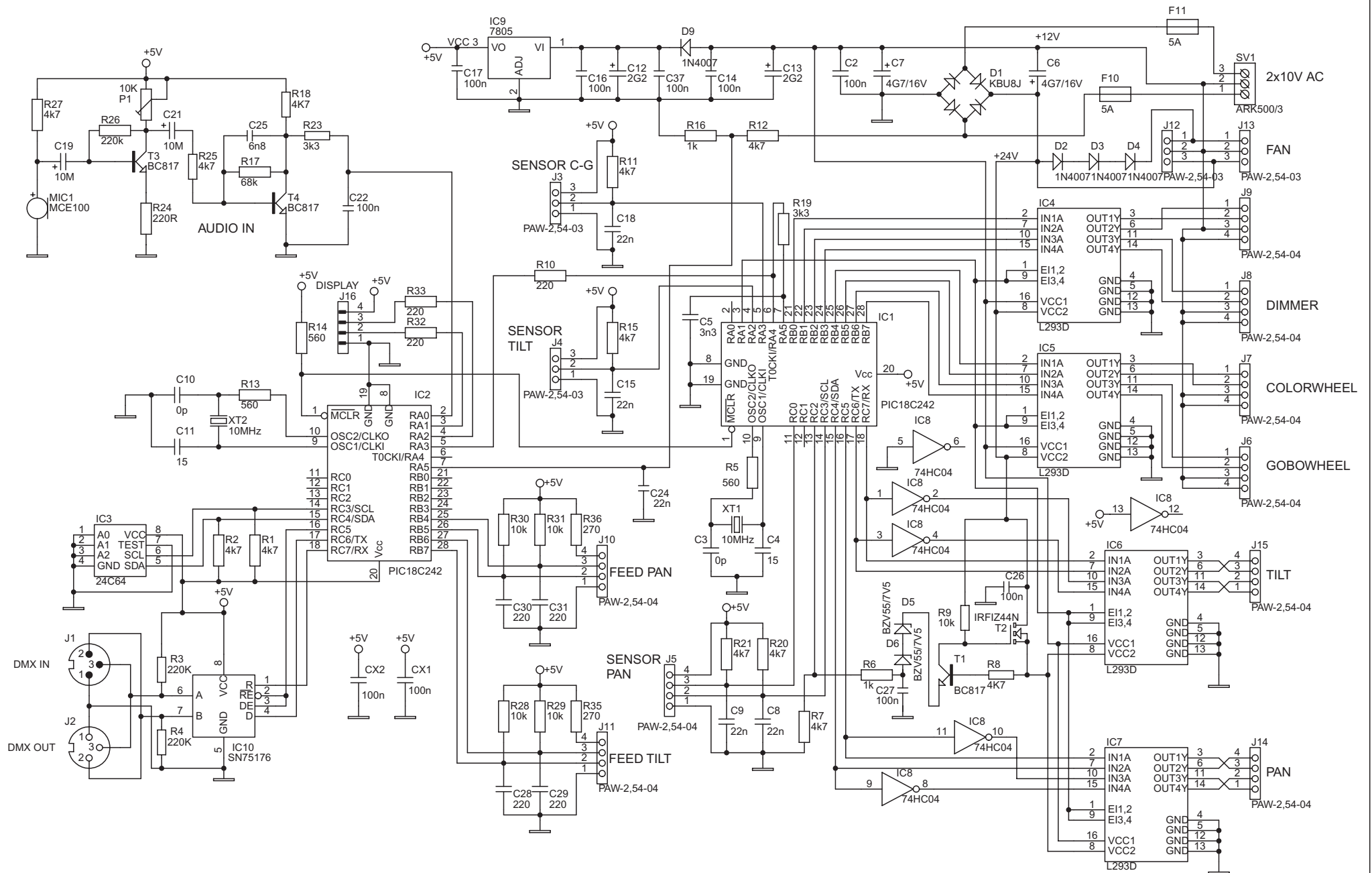


Futurelight
LIGHTING SYSTEMS MADE IN EUROPE

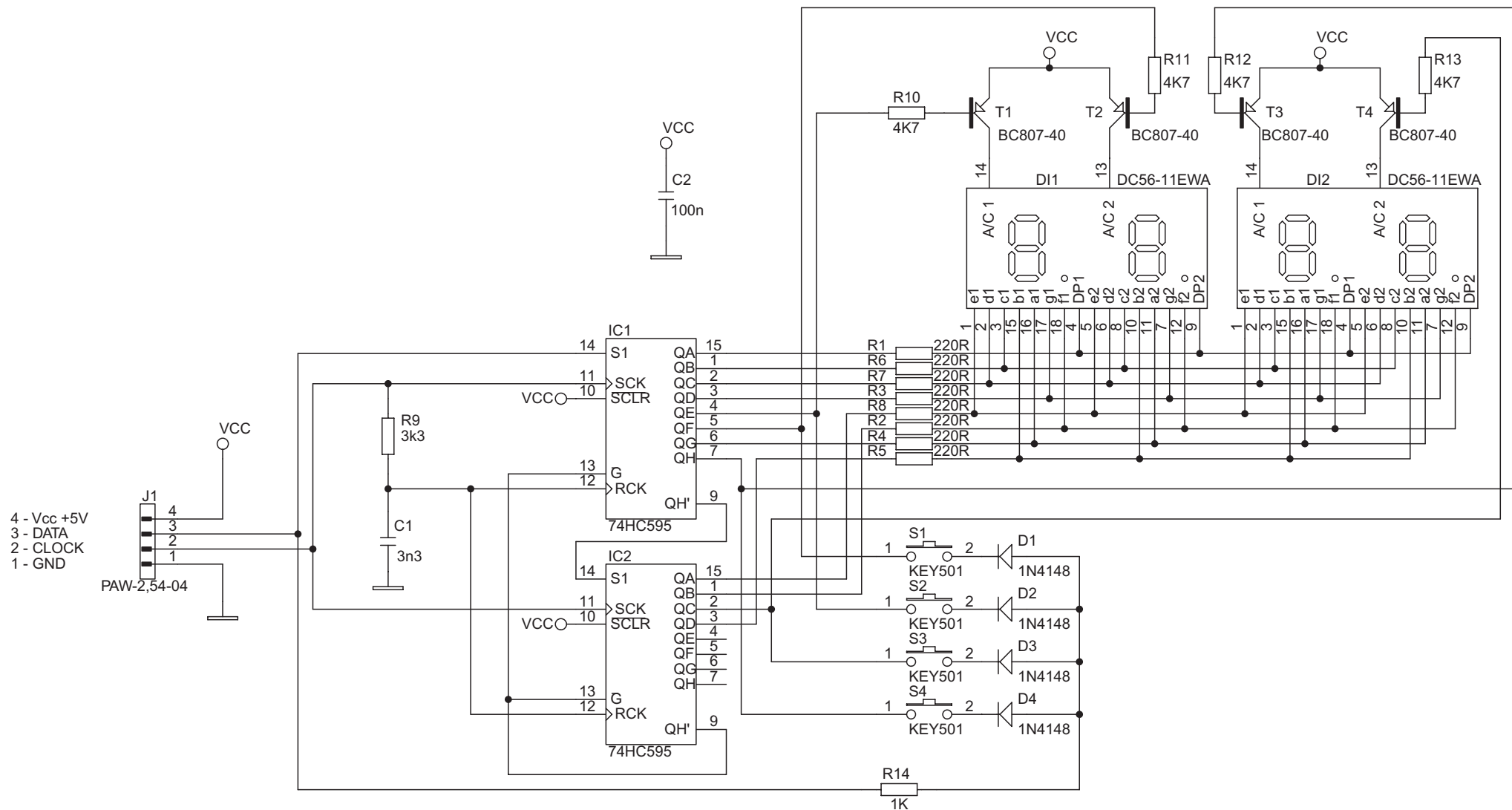
MH-460



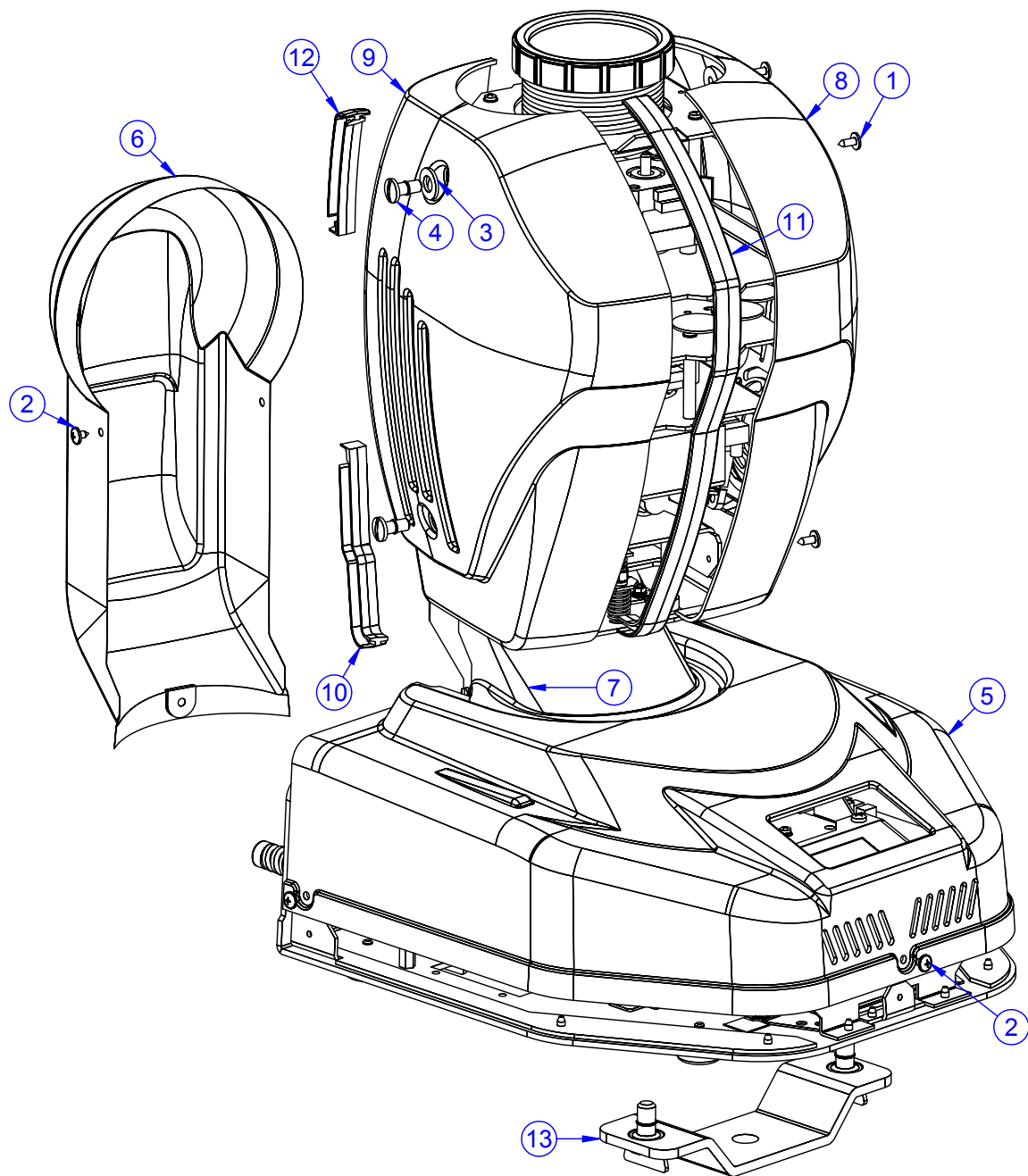
PRODUCT: MH-460		
TITLE: EZ 422		
DOCUMENT: CIRCUIT DIAGRAM		
VERSION: A	DATE: 19.5.2002	SHEET: 2 OF 3



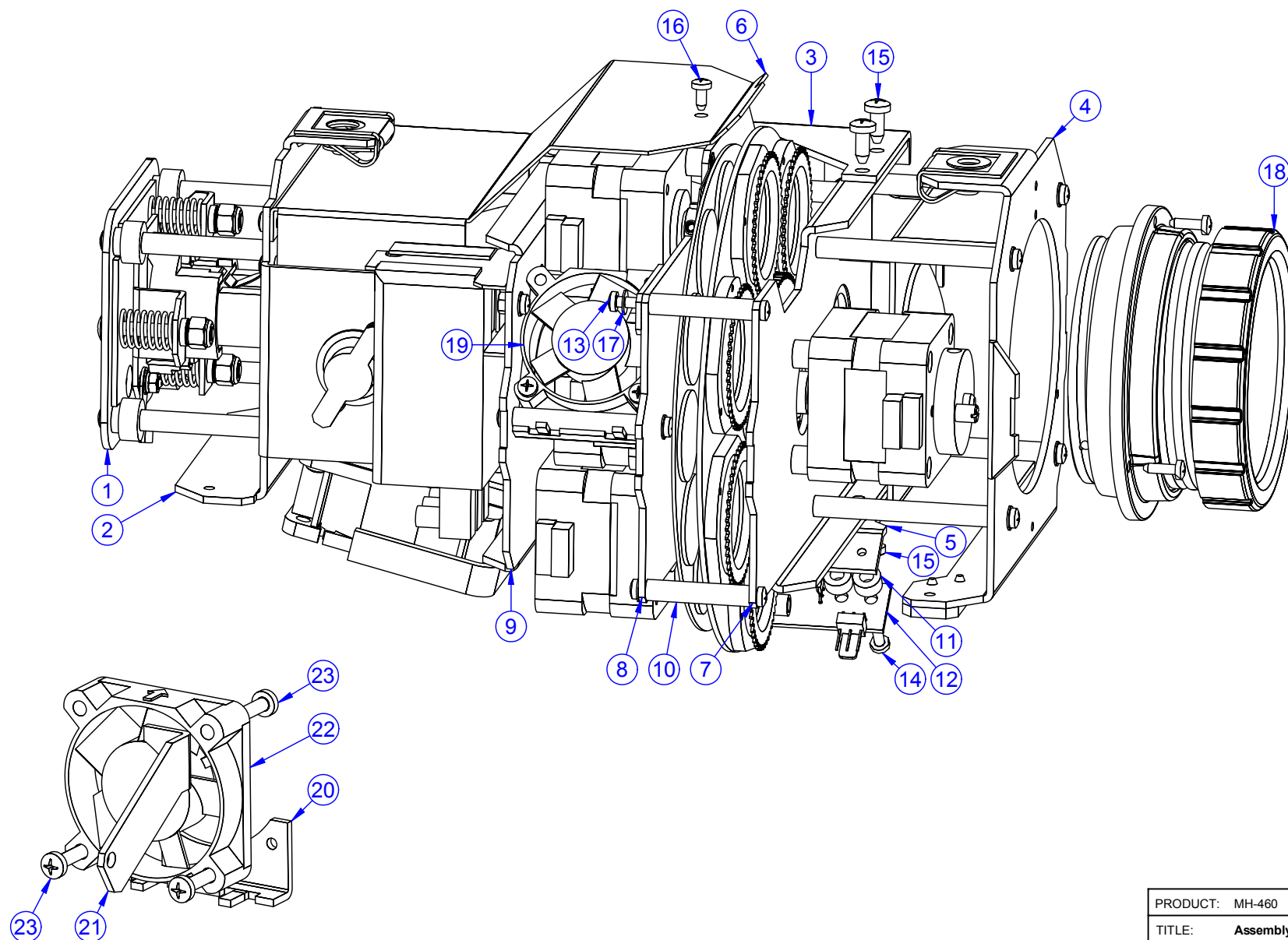
PRODUCT: MH-460		
TITLE: EZ 422		
DOCUMENT: CIRCUIT DIAGRAM		
VERSION: A	DATE: 19.5.2002	SHEET: 2 OF 3



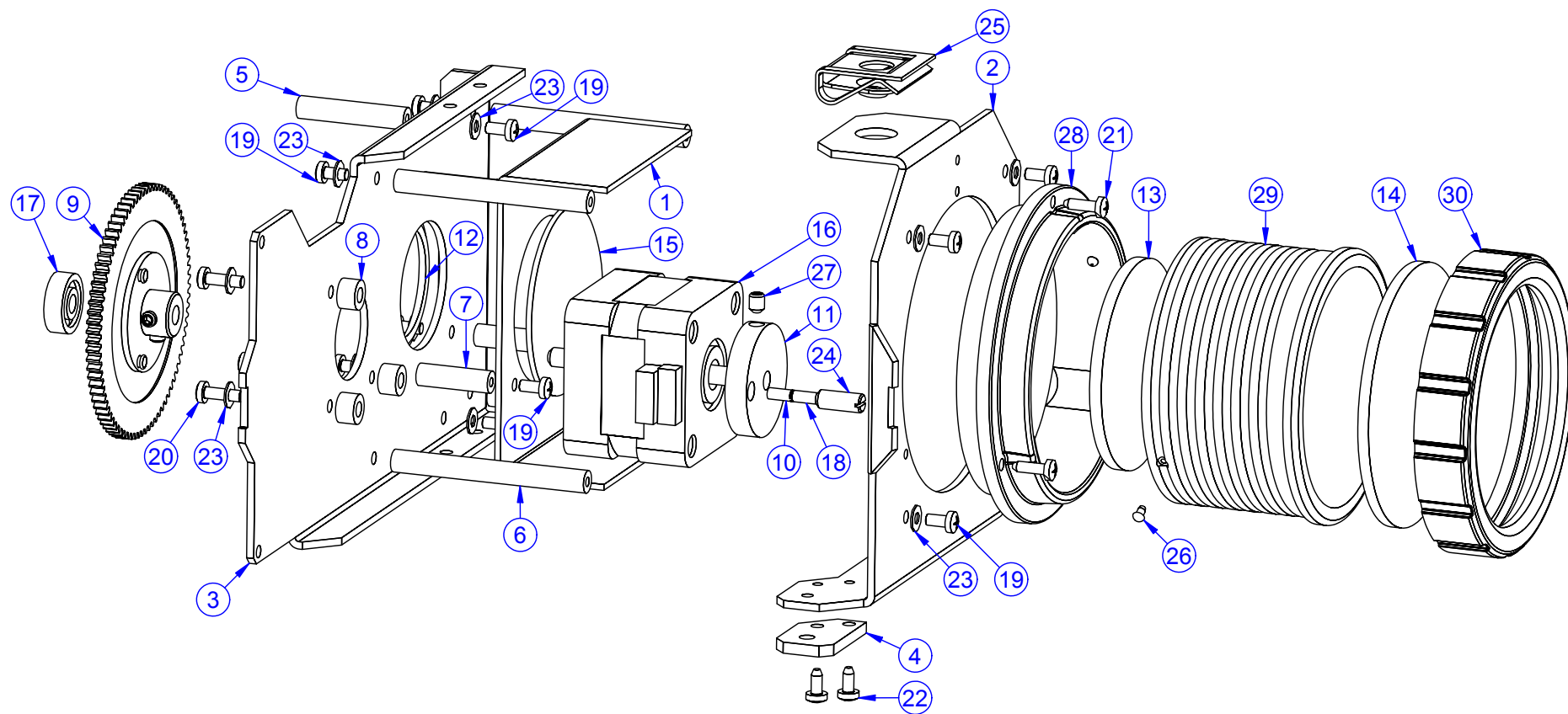
PRODUCT: MH-460		
TITLE: EZND 11		
DOCUMENT: CIRCUIT DIAGRAM		
VERSION: A	DATE: 19.5.2002	SHEET: 3 OF 3



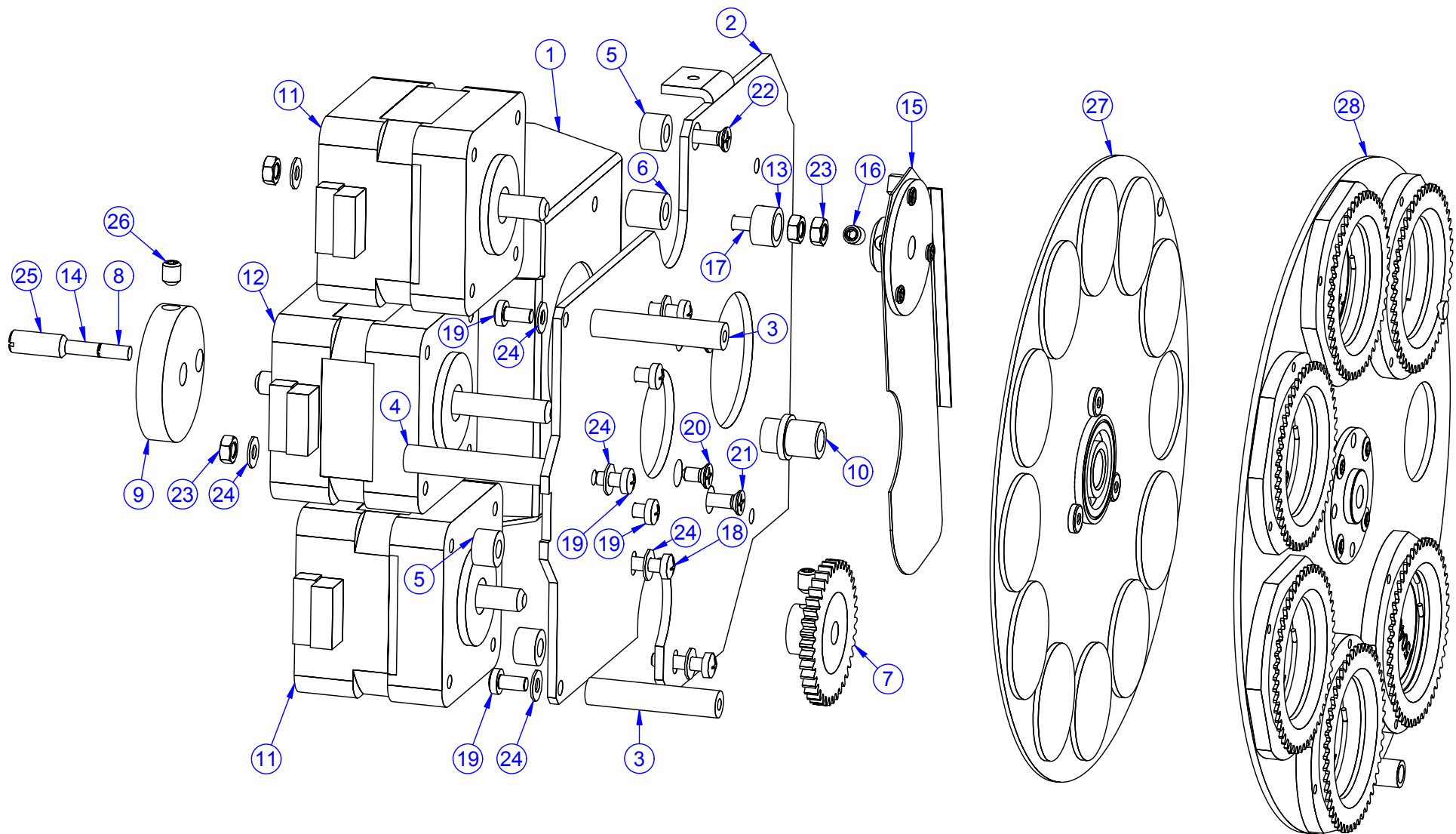
PRODUCT: MH-460		
TITLE: Covers		
DOCUMENT: 99010425		
VERSION: A	DATE: 11.2.2003	SHEET: 1 OF 11



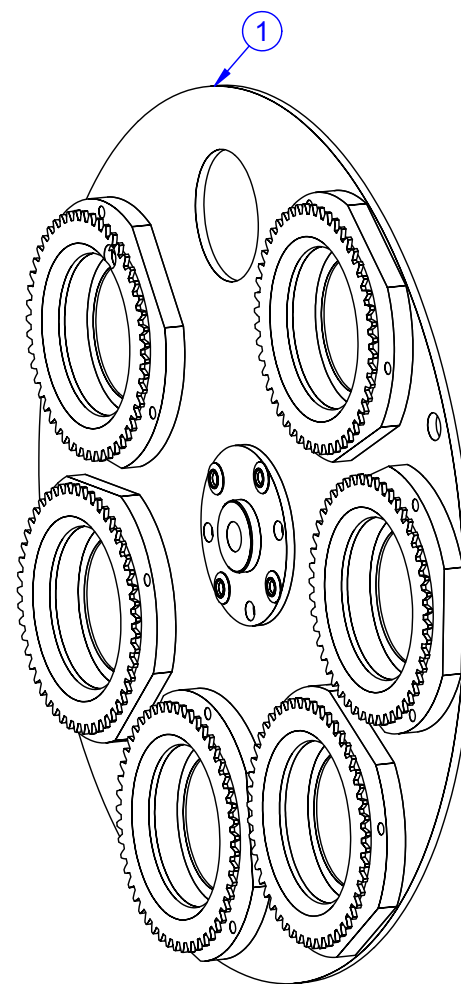
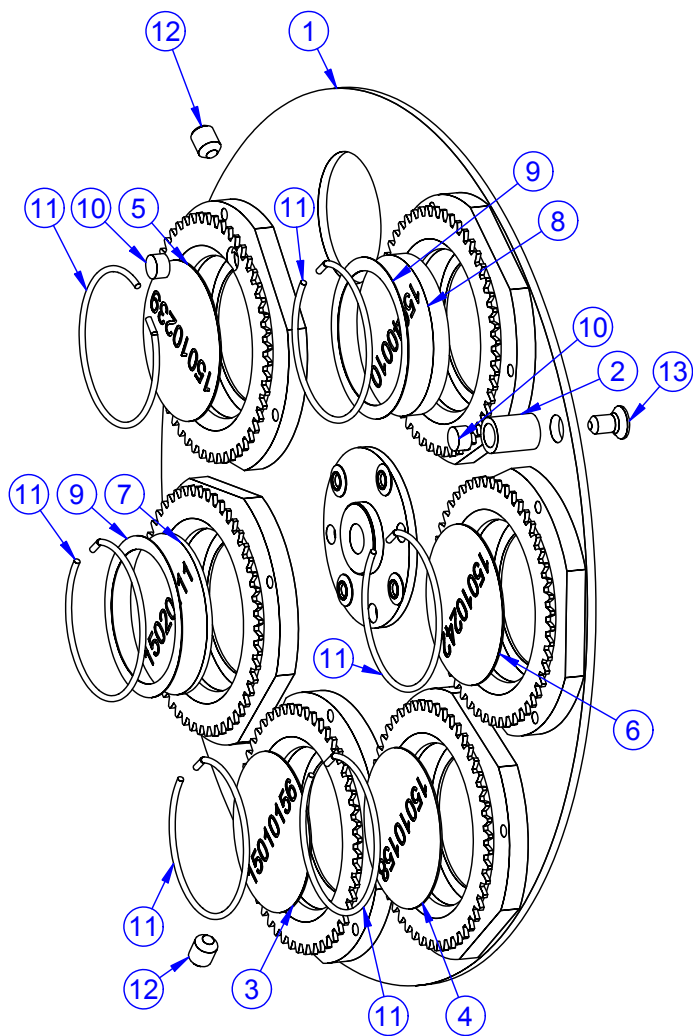
PRODUCT: MH-460		
TITLE: Assembly of head		
DOCUMENT: 99010386		
VERSION: A	DATE: 11.2.2003	SHEET: 2 OF 11



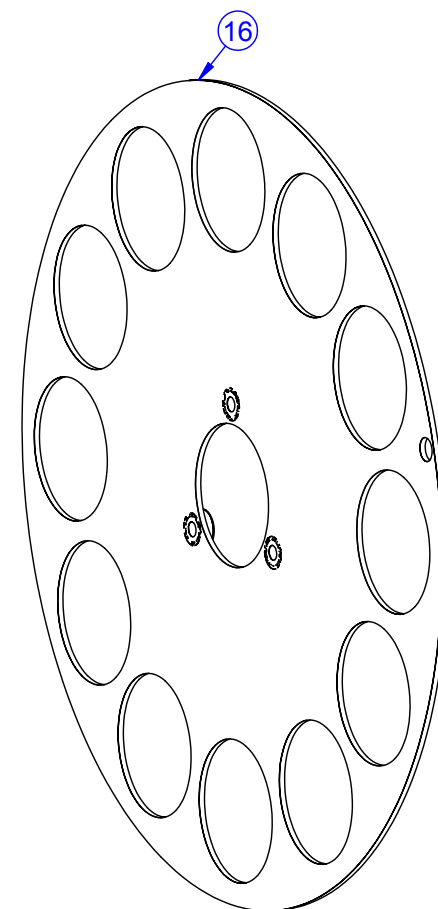
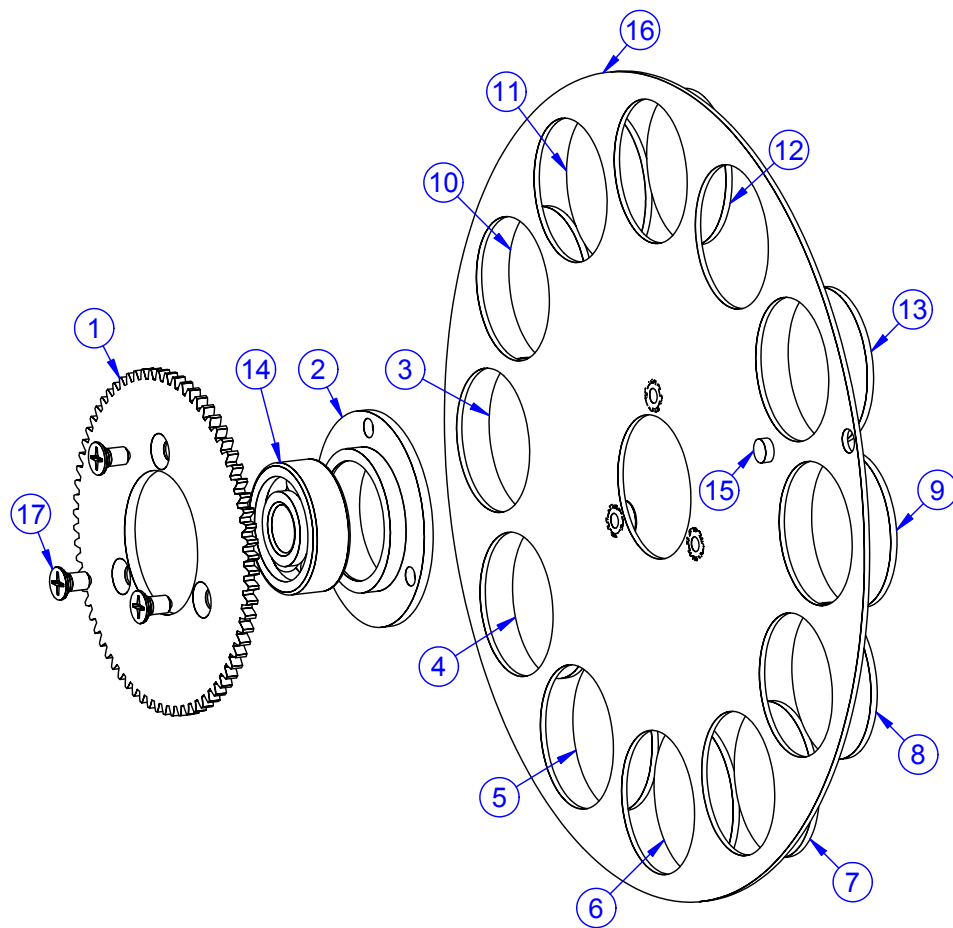
PRODUCT: MH-460		
TITLE: Object lens+running of rotating gobos		
DOCUMENT: 99010386		
VERSION: A	DATE: 11.2.2003	SHEET: 3 OF 11



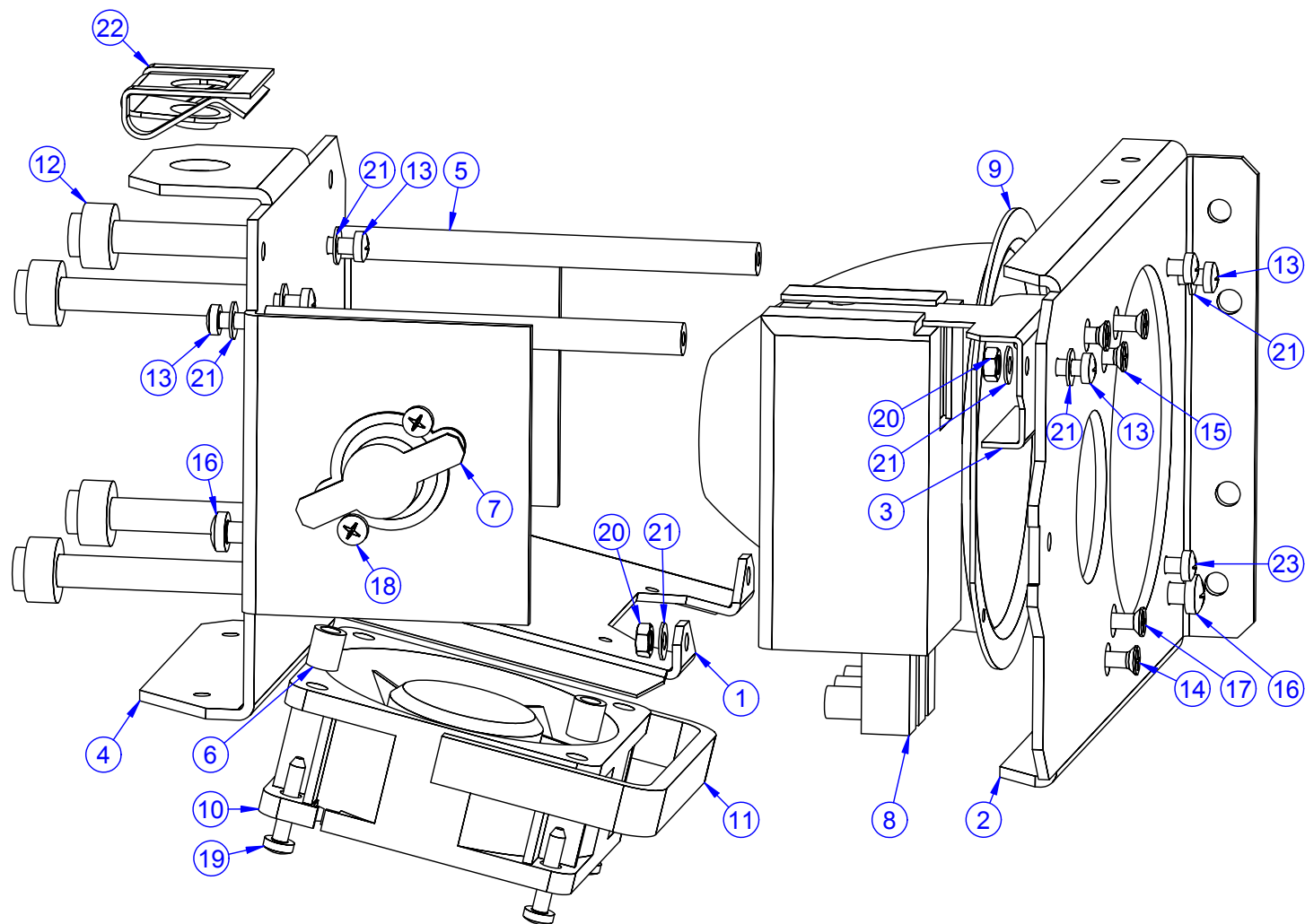
PRODUCT: MH-460		
TITLE: Gobo-Colour module		
DOCUMENT: 99010385		
VERSION: A	DATE: 11.2.2003	SHEET: 4 OF 11



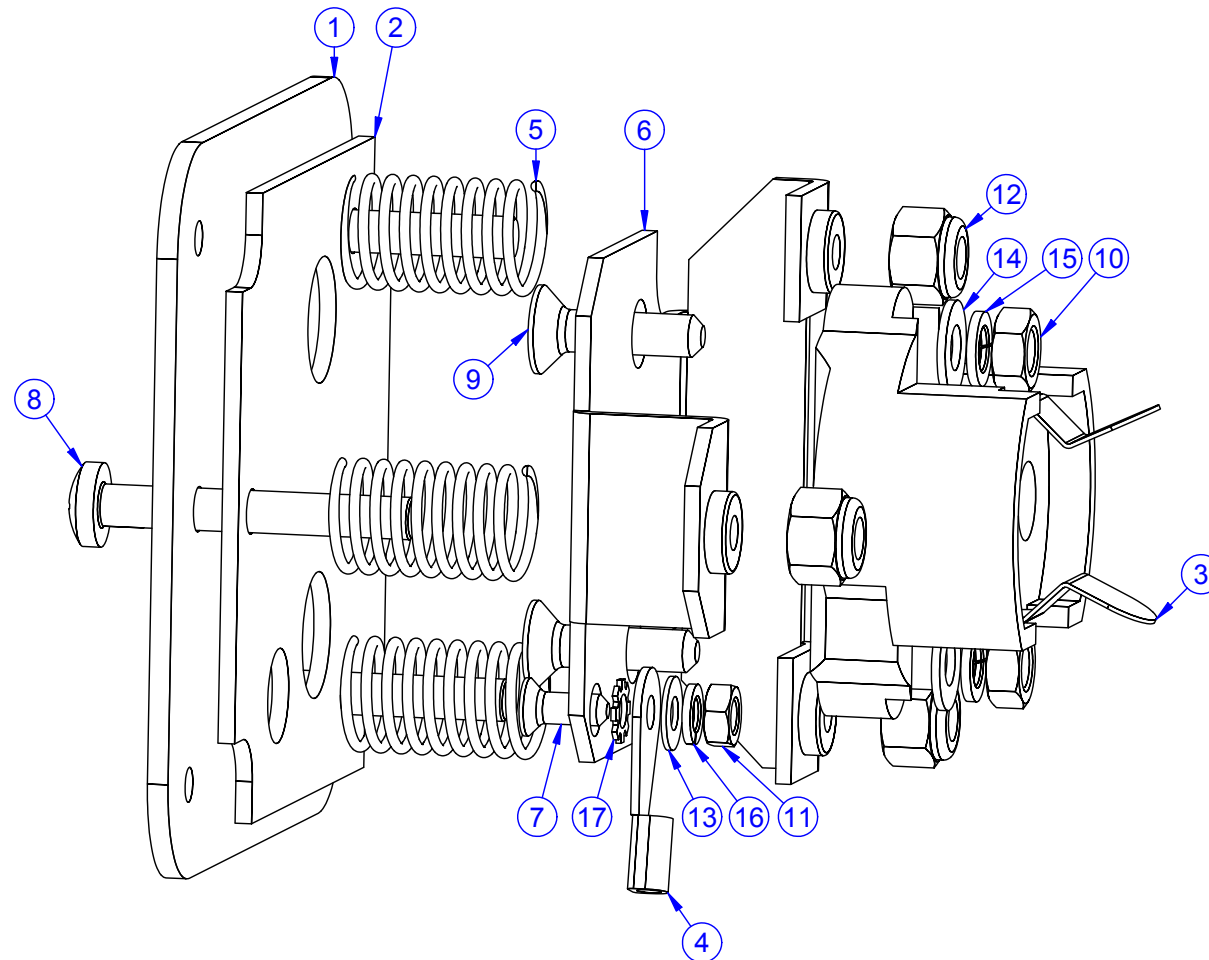
PRODUCT: MH-460		
TITLE: Gobo wheel RG 6+1		
DOCUMENT: 99010384		
VERSION: 1	DATE: 11.2.2003	SHEET: 5 OF 11



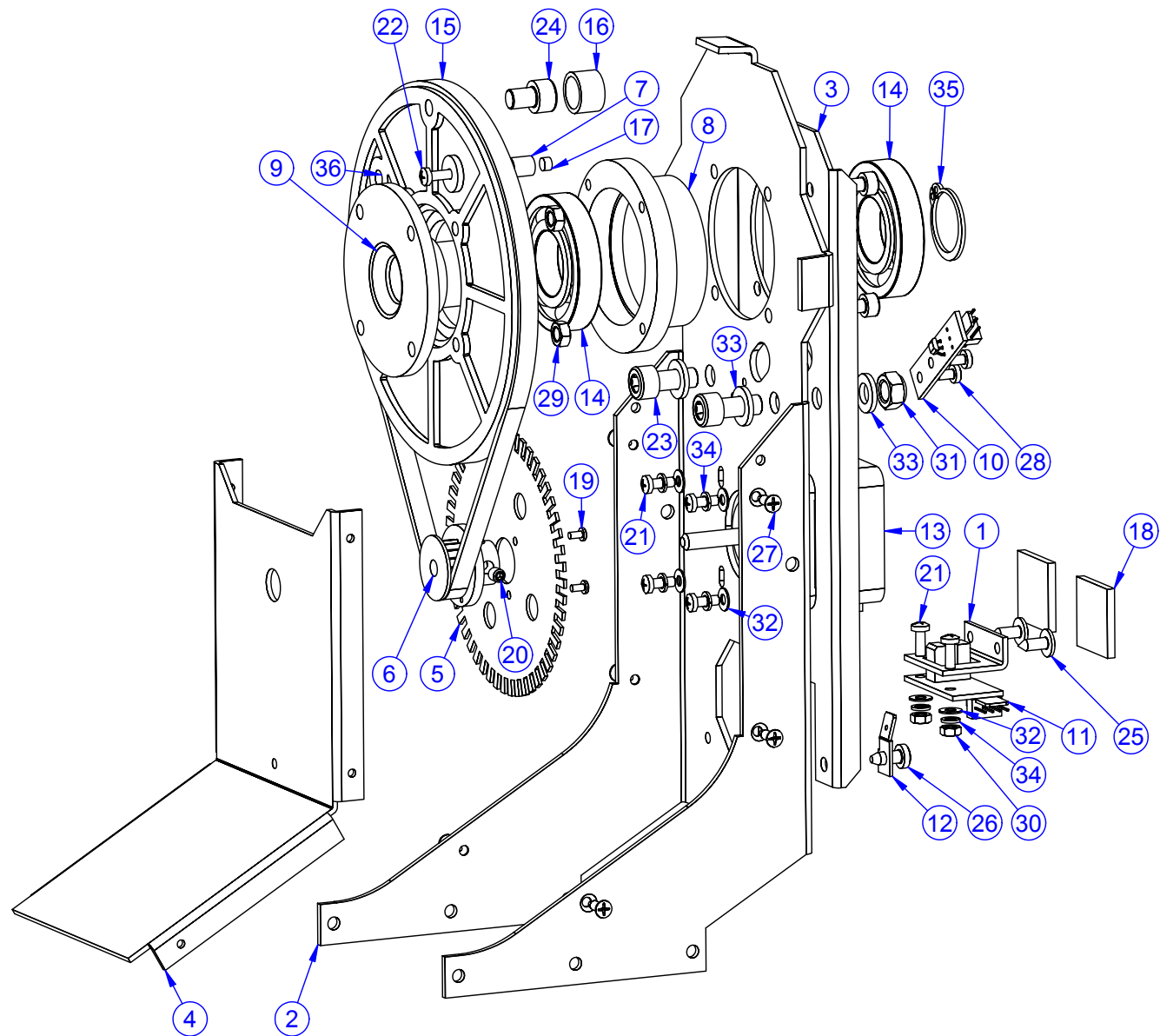
PRODUCT: MH-460		
TITLE: Colour wheel 11+1		
DOCUMENT: 99010093		
VERSION: 1	DATE: 11.2.2003	SHEET: 6 OF 11



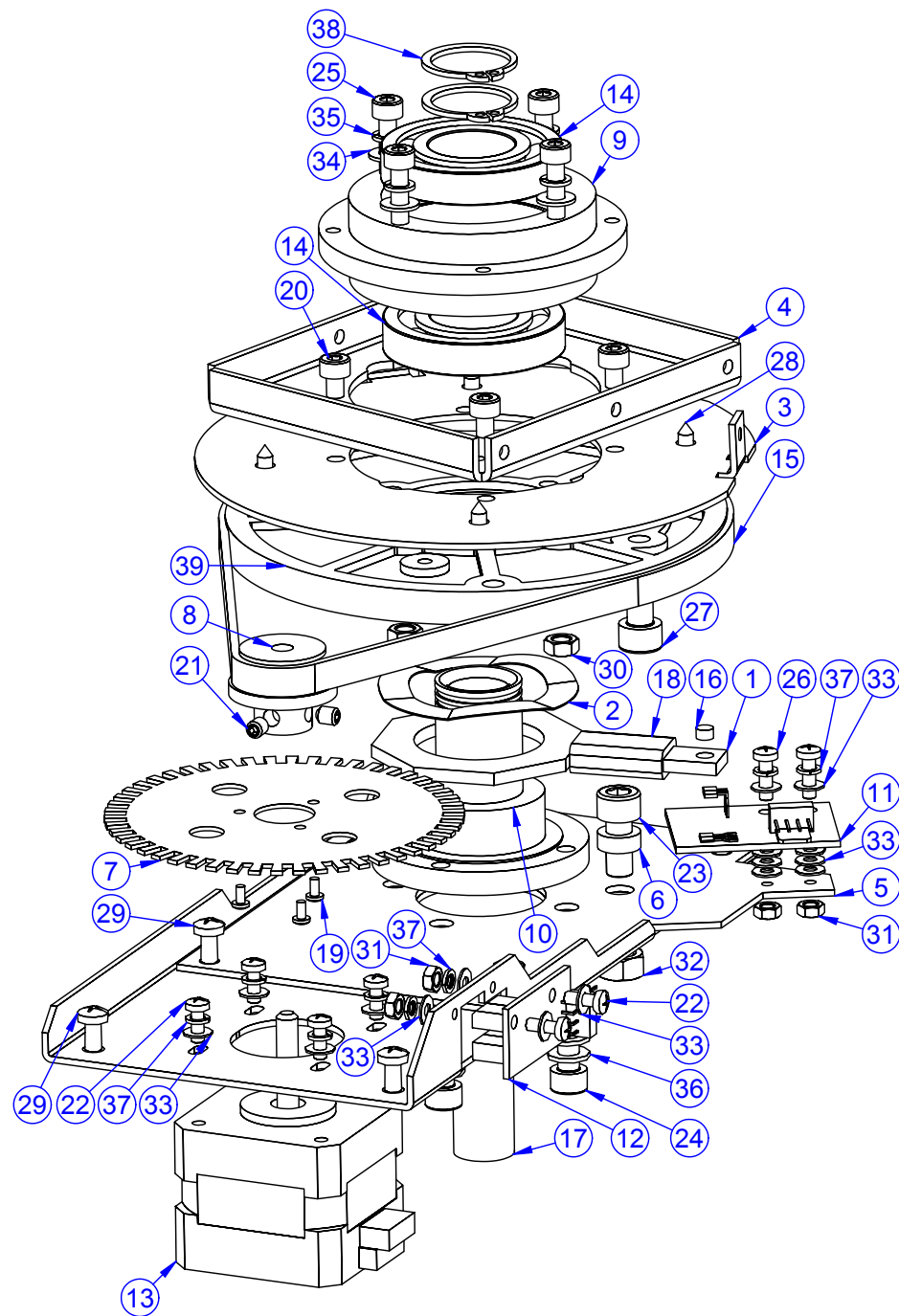
PRODUCT: MH-460		
TITLE: Reflector module		
DOCUMENT: 99010347		
VERSION: 1	DATE: 11.2.2003	SHEET: 7 OF 11



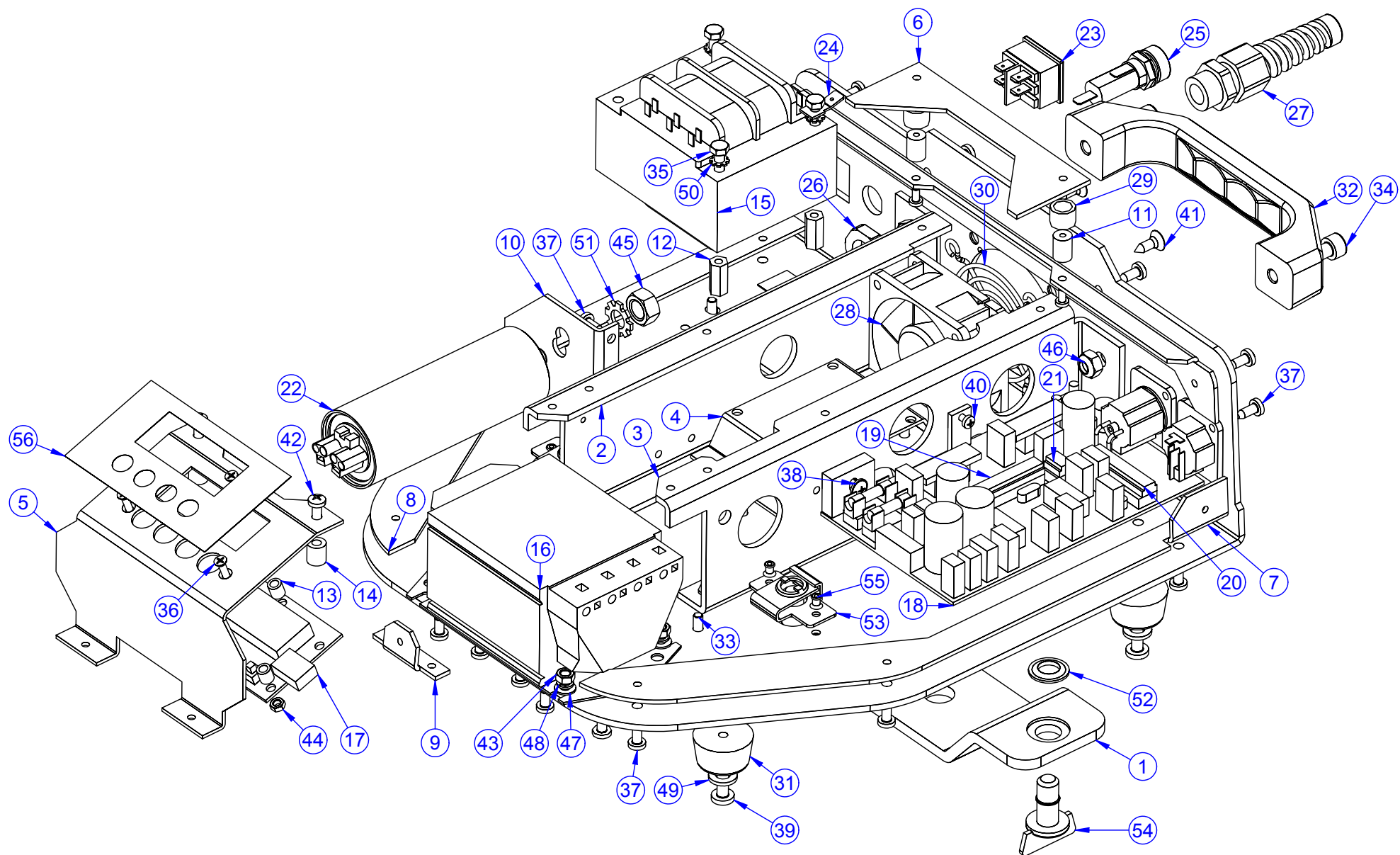
PRODUCT: MH-460		
TITLE: Source of light		
DOCUMENT: 99010318		
VERSION: A	DATE: 11.2.2003	SHEET: 8 OF 11



PRODUCT: MH-460		
TITLE: Arm of head		
DOCUMENT: 99010306		
VERSION: 1	DATE: 11.2.2003	SHEET: 9 OF 11



PRODUCT: MH-460		
TITLE: Axe "X"		
DOCUMENT: 99010308		
VERSION: A	DATE: 11.2.2003	SHEET: 10 OF 11



PRODUCT: MH-460		
TITLE: Base- 230V version		
DOCUMENT: 99010310		
VERSION: A	DATE: 11.2.2003	SHEET: 11 OF 11