

# Custom Vented Box Design

By 1234, nexo

## Box Properties

--Description--

Name:

Type: Vented Box

Shape: Prism, square

--Box Parameters--

Vb = 139.7 liters

Fb = 40.6 Hz

F3 = 39.88 Hz

Fill = minimal

--Vents--

No. of Vents = 3

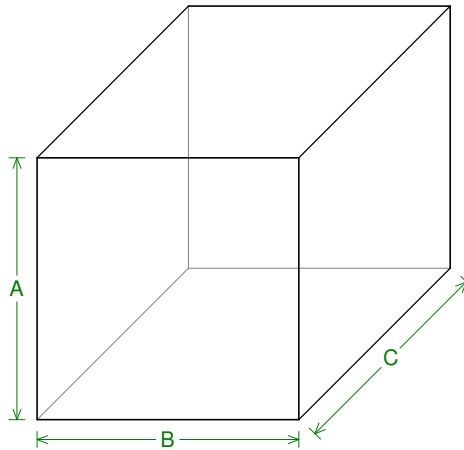
Vent shape = rectangle

Vent ends = one flush

Hv = 60 mm

Wv = 160 mm

Lv = 300 mm



--External Dimensions--

A = 550 mm

B = 550 mm

C = 600 mm

--Internal Dimensions--

A = 514 mm

B = 514 mm

C = 564 mm

--Wall Thickness--

Front = 18 mm

Side = 18 mm

## Driver Properties

--Description--

Name:

Type: Standard one-way driver

--Configuration--

**No. of Drivers = 1**

--Driver Parameters--

Fs = 36 Hz

Qms = 2.478

Vas = 211 liters

Sd = 855 sq.cm

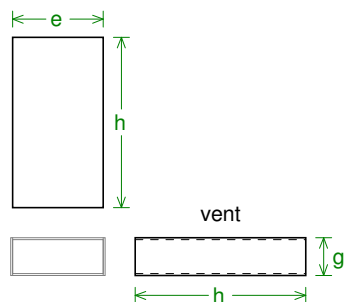
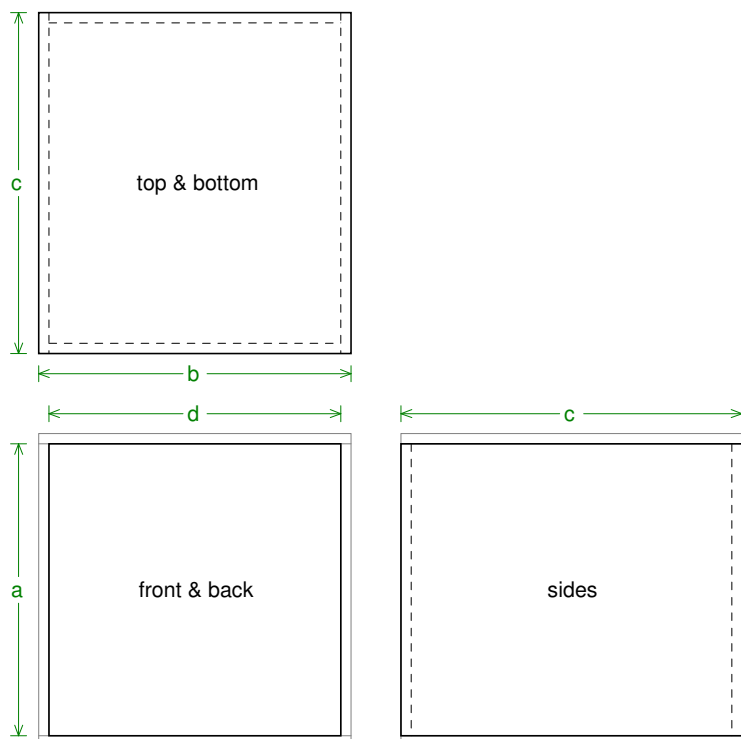
Qes = 0.58

Re = 6 ohms

Le = 0.94 mH

Z = 8 ohms

Pe = 200 watts



## Box Parts

### --Square Prism Box Parts--

1 Top, 1 Bottom: depth (c) = 600 mm  
width (b) = 550, thickness = 18 mm

1 Front, 1 Back: height (a) = 514 mm  
width (d) = 514, thickness = 18 mm

2 Sides: height (a) = 514 mm  
depth (c) = 600, thickness = 18 mm

### --Vent Parts--

3 Tops, 3 Bottoms:  
width (e) = 160, length (h) = 300 mm  
thickness = 3.175 mm

6 Sides:  
height (g) = 66.35, length (h) = 300 mm  
thickness = 3.175 mm

### --Driver Mounting-- Mounting:



### Wiring Diagram

