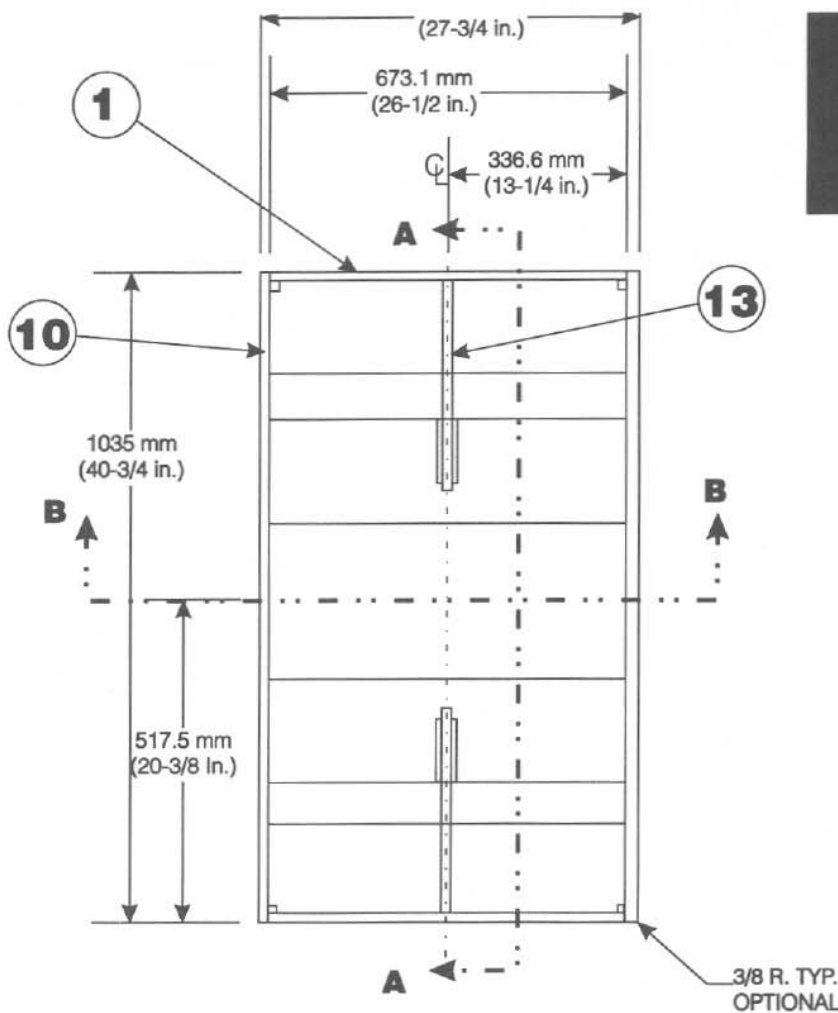


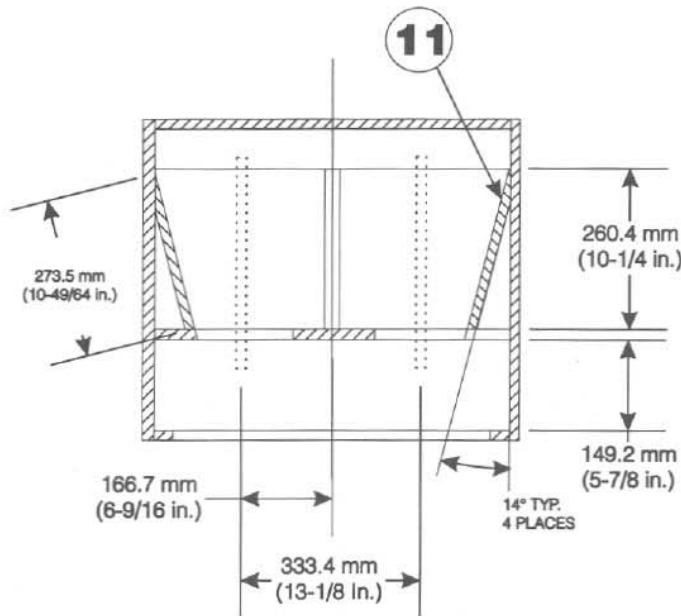
TL5050

BUILDERS PLANS

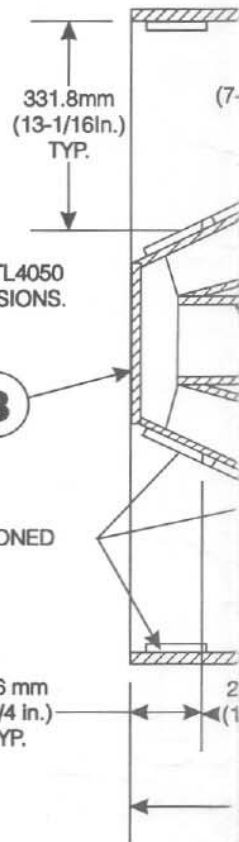
(2) EVM = 12L, HORN-LOADED BASS BOX



FRONT VIEW



SECTION B - B



NOTE:
SEE SECTION B - B OF TL4050
FOR COMPLETE DIMENSIONS.

NOTES:

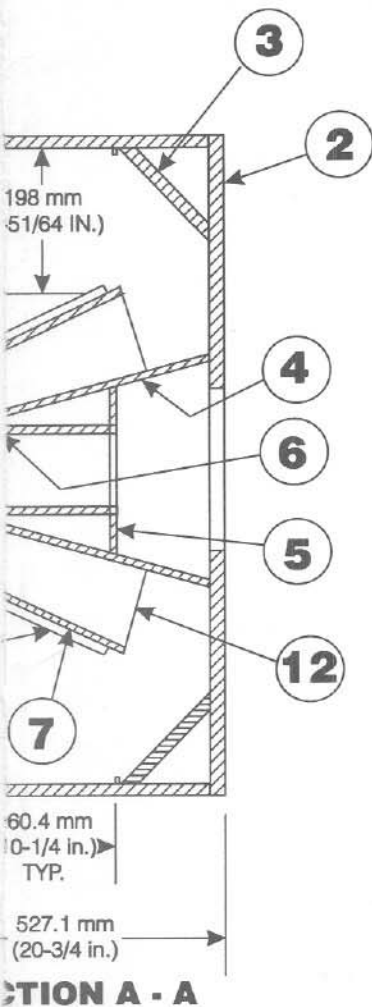
- 1- ALL JOINTS TO BE SECURLY GLUED.
- 2- ALL AIR CHAMBER JOINTS MUST BE AIR TIGHT.
- 3- ALL PANELS TO BE 3/4 IN. THICK VOID FREE CO.
- 4- TOLERANCE ± .8 mm (1/32 IN.).
- 5- AN ADDITIONAL SPEAKER GASKET (PART NUMB Baffle and Speaker.

Item	Description
1	Top & Bottom Panels
2	Back Panel
3	Corner Brace
4	Air Chamber (top & Bottom)
5	Baffle
6	Horn Throat (Top & Bottom)
7	Outer Horn Throat
8	Horn End Cap
9	Access Panel
10	Side Panel
11	Air Chamber Side Panel
12	Horn Brace
13	Horn Brace (Center)

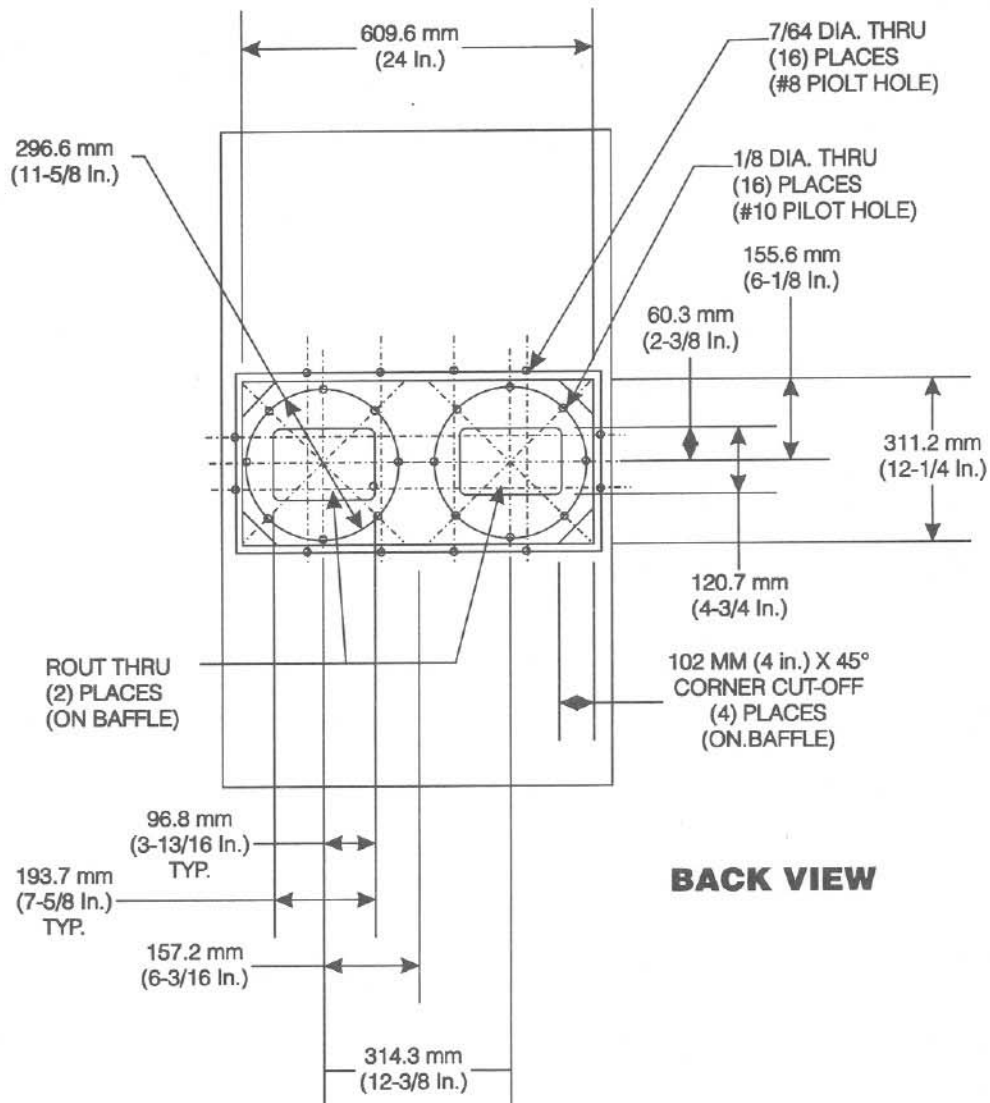


Electro-Voice

600 CECIL STREET, BUCHANAN, MICHIGAN 49107

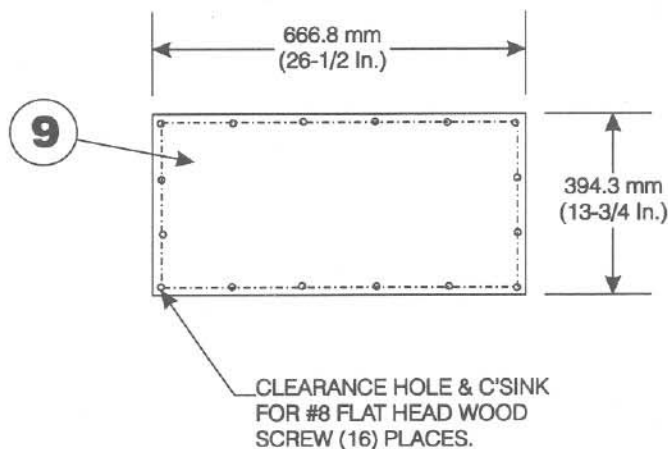


PLYWOOD.
 (37320) IS REQUIRED FOR CLEARANCE BETWEEN



ACCESS PANEL

	Qty.	5050
	2	26-1/2 x 20
	1	40-3/4 x 27-3/4
	2	26-1/2 x 6
Bottom)	2	26-1/2 x 17-5/8
	1	12-1/4 x 26-1/2
Bottom)	2	26-1/2 x 10-1/4
	2	26-1/2 x 15-7/8
	1	26-1/2 x 10-1/2
	1	26-1/2 x 13-3/4
nels	2	40-3/4 x 20
	2	12-7/8 x 4-3/4
	4	4-11/16 x 13-7/16
	2	13 x 10-1/4



ALL DIMENSIONS SHOWN IN CENTIMETERS AND (INCHES).