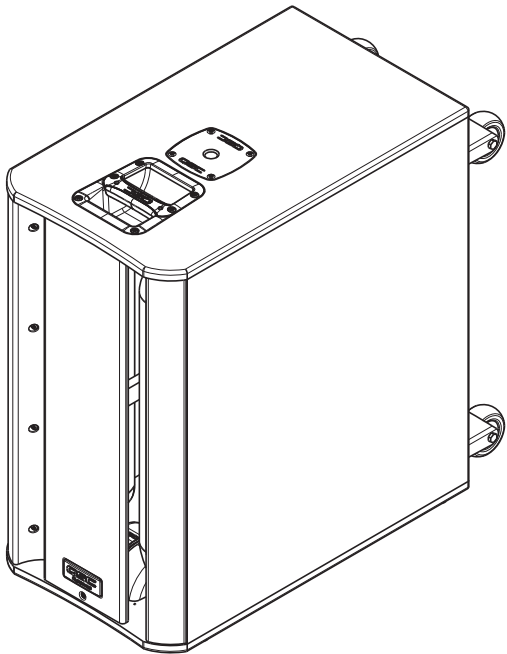
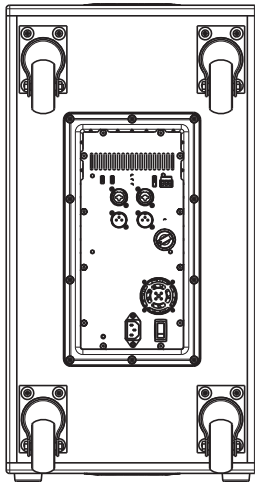
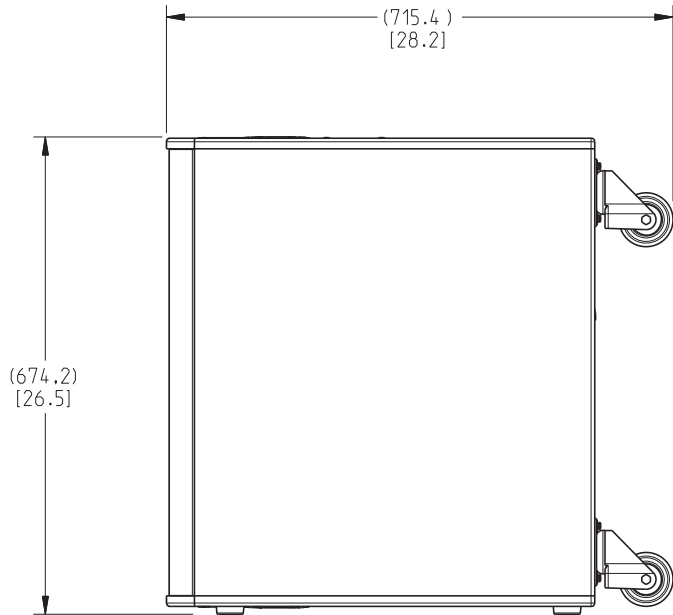
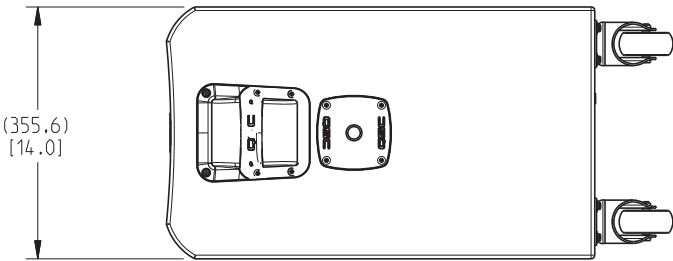


THIS DOCUMENT CONTAINS PROPRIETARY INFORMATION WHICH IS THE PROPERTY OF QSC AUDIO PRODUCTS. THAT MAY NOT BE DISCLOSED, REPRODUCED OR USED WITHOUT EXPRESS WRITTEN CONSENT FROM QSC AUDIO PRODUCTS.

REVISIONS					
REV	DESCRIPTION	EFF DATE	CHK	APVD	
A	PRODUCTION RELEASE W/O CHANGE PER ECO 9317 JD	6-30-09	CD	DD	



4. ENCLOSURE TO BE FULLY SEALED DURING ASSEMBLY, SUCH THAT THE ONLY AIR FLOW SHALL BE THROUGH PORTS.
3. THIS PART MUST BE ROHS COMPLIANT PER QSC RD-000160-00. SUPPLIER TO PROVIDE A CERTIFICATE OF ROHS COMPLIANCE.

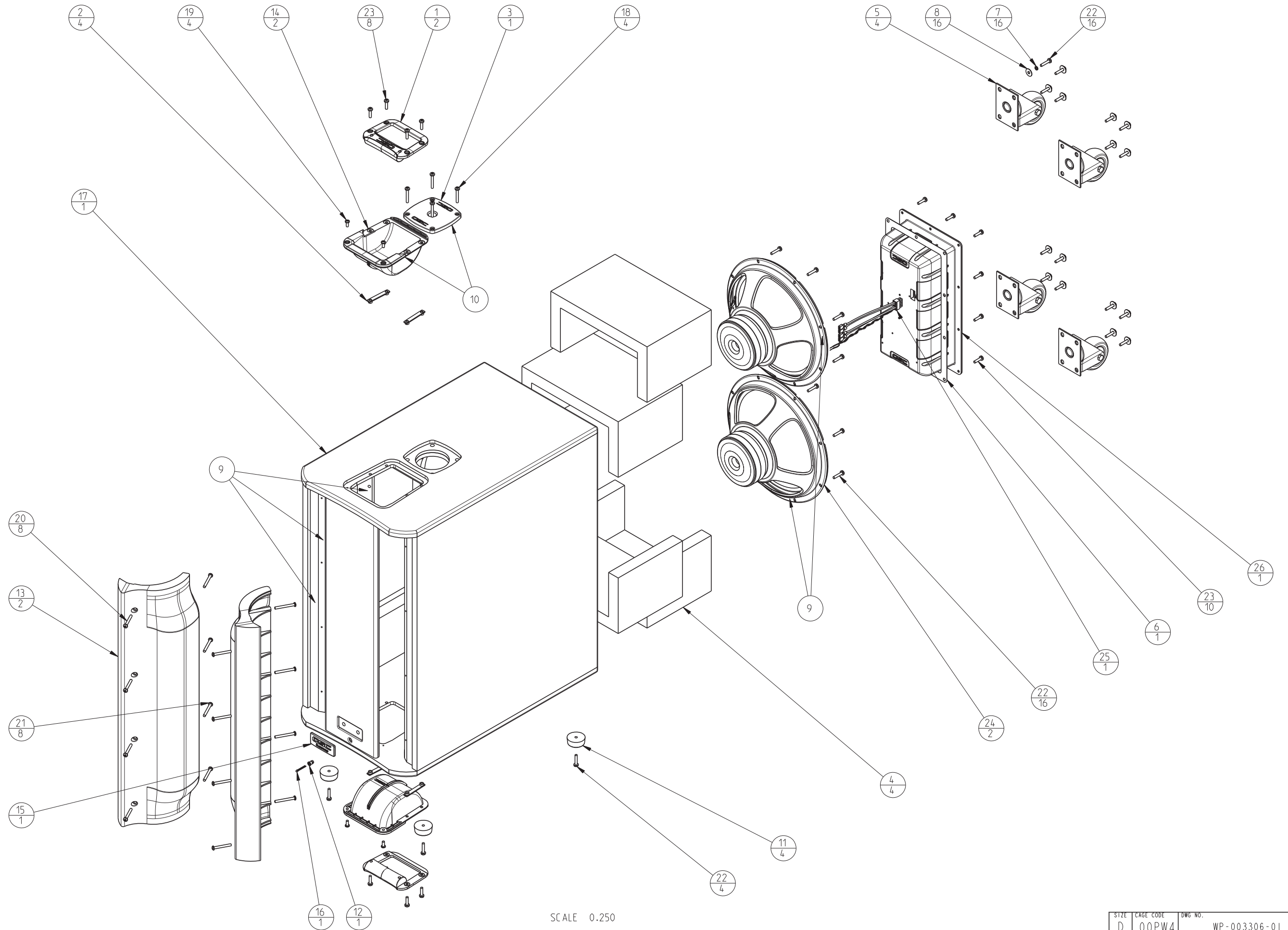
2 FINISH: NONE

1 MATERIAL: NONE

NOTE: UNLESS OTHERWISE SPECIFIED

UNLESS OTHERWISE SPECIFIED DIMENSIONS ARE IN INCHES. TOLERANCES ARE: DECIMALS DECIMALS ANGLES .XX ±.02 .XXX ±.010 ±1/2 DEBURR EDGES .010 R MAX			CONTRACT NO.		<div>QSC</div> <div>QSC AUDIO PRODUCTS, LLC 1675 MACARTHUR BOULEVARD COSTA MESA, CA 92626</div>			
			APPROVALS					DATE
MATERIAL <div>1</div>			DRAWN S. TAMASI		29-Jun-09			
			CHECKED S. FELTS		6-24-09			
FINISH <div>2</div>			MFG ENG D. GALVAN		6-24-09			
			ISSUED D. DELARM		6-29-09			
DO NOT SCALE DRAWING			WP-003306-01.main.A.0		SCALE 0.188		WP-003306-01.A.0	SHEET 1 of 2
					SPEAKER ASSY, KSUB			

THIS DOCUMENT CONTAINS PROPRIETARY INFORMATION
WHICH IS THE PROPERTY OF OSC AUDIO PRODUCTS. THAT
MAY NOT BE DISCLOSED, REPRODUCED OR USED WITHOUT
EXPRESS WRITTEN CONSENT FROM OSC AUDIO PRODUCTS.



SCALE 0.250

SIZE	CAGE CODE	DWG NO.	REV
D	00PW4	WP-003306-01	A
SCALE 0.188	WP-003306-01.A.0		SHEET 2 of 2

DRAWING INFO

Item Number	Component Description	Component Number	Qty
1	HANDLE, , BLK, SPEAKERS,	CH-000850-01	2
2	PLATE, HANDLE BACKING, , K-SERIES,	CH-000870-00	4
3	POLE MOUNT, THREADED, M20, KSUB,	CH-000889-00	1
4	ACOUSTIC WOOL, 200X600X30, , ,	MS-000074-GP	4
5	CASTER, SWIVEL, 3 INCH, ,	MS-000259-GP	4
6	GASKET, OUTER, BUCKET, BOP-2CH,	MS-000486-00	1
7	WSHR, SPLKG, M5, , , , STL, CLR, ZINC CR3,	NW-000171-00	16
8	WSHR, FLT, M5, , , 18 OD, , STL, CLR, ZINC CR3,	NW-000172-00	16
9	GASKET, 1000X10X2MM, EVA B, , ,	PL-000062-GP	10
10	EVA GASKET, 5X500, , , ,	PL-000066-GP	3
11	FEET, HPR SUBS, , RUBBER, ,	PL-000445-GP	4
12	LED HOLDER, FOR HPR, , , ,	PL-000479-GP	1
13	BAFFLE SIDE/PORT, KSUB, , , ,	PL-000638-01	2
14	HANDLE BACK CUP, KSUB, , , ,	PL-000640-01	2
15	LOGO, K12, , , BLK,	PL-000659-01	1
16	LED, 3MM, BLUE SP, SLR343BB T 225419 ROHM, , ,	QD-000312-GP	1
17	ENCLOSURE, , KSUB, , ,	SB-000089-01	1
18	SCR, PHH, PNH, , , , M5, 35 L, STL, BLK, ZINC CR3,	SC-000097-GP	4
19	SCR, PHH, PNH, WOOD, , , , M5, 12 L, STL, BLK, ZINC CR3,	SC-000252-00	4
20	SCR, PHH, PNH, WOOD, , , , M5, 40 L, STL, BLK, ZINC CR3,	SC-000253-00	8
21	SCR, PHH, PNH, TPG, PLASTITE, , , , M5, 45 L, STL, BLK, ZINC CR3,	SC-000256-00	8
22	SCR, PHH, PNH, MACH, , , , M5, 25 L, CLASS 4.6, BLK, ZINC, CR3	SC-000283-00	36
23	SCR, PHH, PHN, MACH, , , , M5, 20 L, STL CLASS 4.6, BLK, ZINC CR3,	SC-000288-00	18
24	WOOFER, 12", PAPER, FERRITE, CELESTION, KSUB	SP-000183-00	2
25	WIRE HARNESS, , , , KSUB, ,	WC-000493-00	1
26	CHASSIS ASSY, MAIN, KSUB, UNIVERSAL SUPPLY,	WP-003310-00	1