

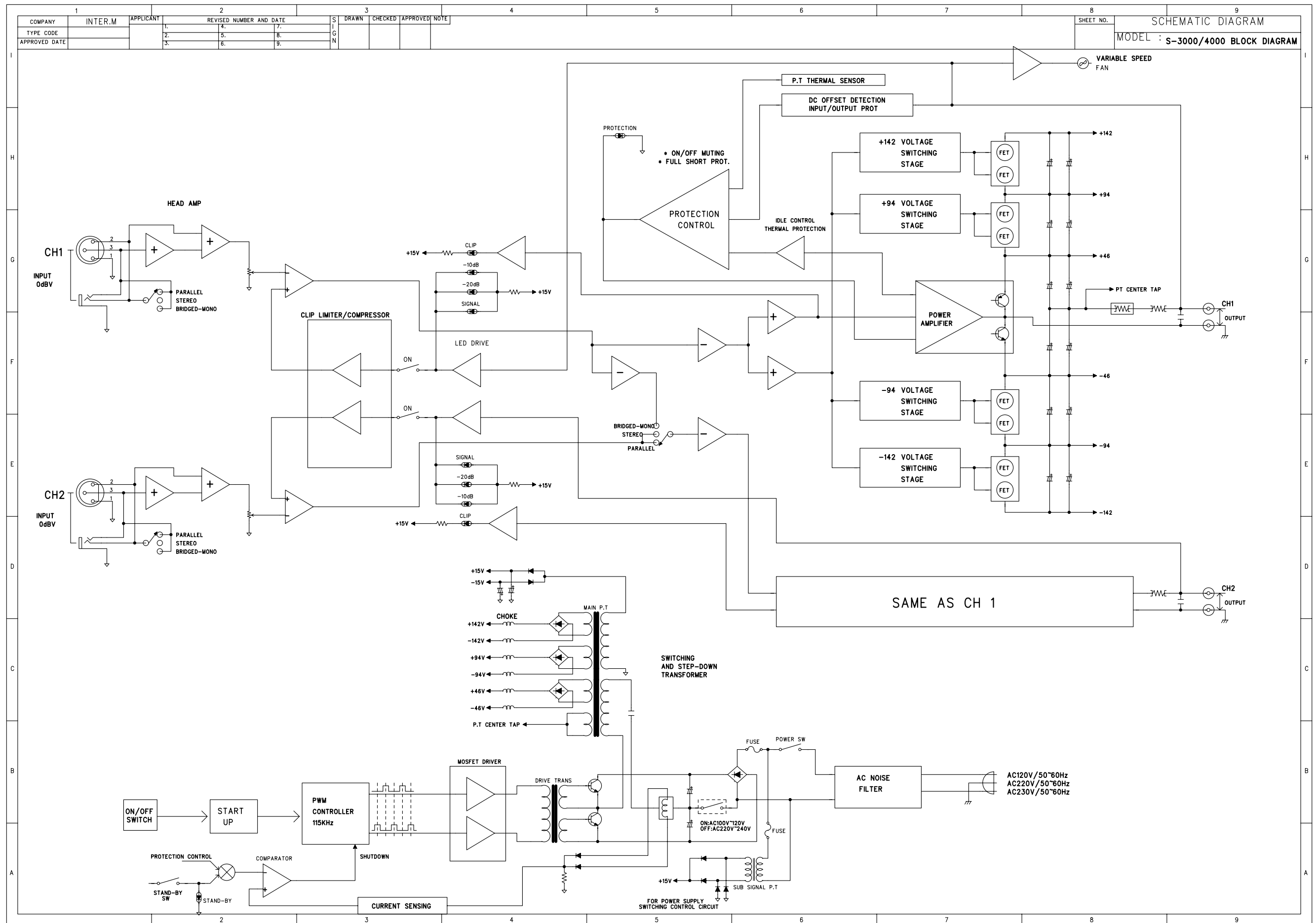
# SERVICE MANUAL

S U P E R I O R S E R I E S

# AMPLIFIER

**S-4000**

**interM**



## ELECTRICAL PARTS LIST ( S - 4000 )

| Ref No.   | Part No.     | Description                    | Value        | Qty | Remark |
|---|--------------|--------------------------------|--------------|-----|--------|
| MAIN B'D (4005188900)   |              |                                |              |     |        |
| C918 C929   | 3609103120-T | CAP MA 0.01UF 100V             | MA0.01       | 2   |        |
| C701  | 3609332120-T | CAP MA 0.0033UF 100V           | MA0.0033     | 1   |        |
| C702 C748 C943  | 3609102120-T | CAP MA 0.001UF 100V            | MA0.001      | 3   |        |
| C709  | 3669474108   | CAP MKP1845 0.47UF 400V        | MKP 0.47/400 | 1   |        |
| C711 C714   | 3659101179   | CAP MICA DM15 100PF 500V J     | MI100P       | 2   |        |
| C718 C723 C725-726<br>C746-747 C752 C766<br>C911 C924   | 3639104255-T | CAP TL 104K 250V K SMA-4000    | TL104K/250   | 10  |        |
| C738 C740 C732 C736   | 3639475255   | CAP TL 475K 250V K             | TL475K/250   | 4   |        |
| C727 C741 C724  | 3569105933-T | CAP CE MONO 1UF 50V Z SMA-4000 | 105MC        | 3   |        |
| C729 C753 C757-758<br>C762 C767 C769-770<br>C773-775 C907 C909<br>C917 C737 C931<br>C946-947 C949-950<br>C953-954 | 3569104933-A | CAP CE MONO 0.1UF 50VZSMA-4000 | 104MC        | 22  |        |
| C916 C928 C937  | 3609222120-T | CAP MA 0.0022UF 100V J         | MA0.0022     | 3   |        |
| C777  | 3649104251   | CAP ECQ-U2A104KV PANASONIC     | ECQ0.1/250   | 1   |        |
| C772 C942 C771  | 3509221130-T | CAP CE SL 220PF 50V J          | CE220P       | 3   |        |
| C920  | 3509470130-T | CAP CE SL 47PF 50V J           | CE47P        | 1   |        |
| C938  | 3639224111-T | CAP ECQ-V 1H224JL2 0.22UF 50VJ | MA224        | 1   |        |
| C939 C908 C933  | 3659180179   | CAP MICA DM15 18PF 500V J      | MI18P        | 3   |        |
| C708 C703   | 3669225149   | CAP MP PPT 2.2UF 200V J        | 2.2/200      | 2   |        |
| C944  | 3659270179   | CAP MICA DM15 27PF 500V J      | MI27P        | 1   |        |
| C941  | 3659331179   | CAP MICA DM15 330PF 500V J     | MI330P       | 1   |        |
| C906 C910   | 3609152120-T | CAP MA 0.0015UF 100V J         | MA0.0015     | 2   |        |
| C749 C913   | 3509471130-T | CAP CE SL 470PF 50V J          | CE470P       | 2   |        |
| C921 C932   | 3409847041-T | CAP AF NP 47UF25V 8 P          | NP47/25      | 2   |        |
| C925  | 3409822121-T | CAP NP AF 220UF 10V            | NP220/10     | 1   |        |
| C934 C948   | 3409847941-T | CAP AF NP 4.7UF 25V 6 P        | NP4.7/25     | 2   |        |
| C704-705 C712-713   | 3419522295   | CAP HC 2200UF 200V 40*50       | 2200/200     | 4   |        |
| C716-717 C719-722<br>C733-735 C742-744<br>C750-751 C755-756<br>C760-761   | 3408247187   | CAP AF RZ 470UF 63V SNAP 13P   | RZ470/63     | 18  |        |
| C730 C765 C768 C912<br>C914   | 3408247147   | CAP AF RX 470UF 25V SNAP 10P   | RX470/25     | 5   |        |
| C764 C776 C739 C763   | 3409210071-T | CAP AF RSG 10UF 50V 5 P        | 10/50        | 4   |        |
| C901-902 C919<br>C922-923 C926-927  | 3409247071-T | CAP AF RSG 47UF 50V 6 P        | 47/50        | 7   |        |
| C903 C945   | 3409210171-T | CAP AF RSG 100UF 50V 8 P       | 100/50       | 2   |        |
| C905 C904 C951-952  | 3409247131-T | CAP AF SG 470UF 16V 10X12.5    | 470/16       | 4   |        |
| C936 C935   | 3409222141-T | CAP AF RSG 220UF 25V J 8 P     | 220/25       | 2   |        |
| C759 C754   | 3408233141   | CAP RSA 330UF 25V SNAP 10 P    | 330/25       | 2   |        |
| L700  | 2698009950   | COIL TOROID RF 1.9UH S-4000    | 1.9uH        | 1   |        |
| L901  | 2648099800   | COIL INDUTOR 2.2UF             | 2.2UH        | 1   |        |
| T701  | 2698009920   | COIL TRANS 4P SMA-4000         | COIL TRANS   | 1   |        |
| T702  | 2698009910   | COIL TRANS 6P(DRIVE) SMA-4000  | TRANS        | 1   |        |
| CN901   | 4428595002   | LW5267/LWB0640/2.5MM-02P       | BOX(SCREW)   | 1   |        |
| AN812   | 4428596604   | LOCK WAFER LW-1143-04P         | CH1143-4P    | 1   |        |

|   |            |                                |                |    |        |
|---|------------|--------------------------------|----------------|----|--------|
| CN705   | 4428595005 | LW5267/LWB0640/2.5MM-05P       | HEADER 5P      | 1  |        |
| CN903   | 4428598308 | CONNECTOR WAFER LW-0640-8P     | WAFER 8P       | 1  |        |
| AN101   | 4428591316 | WAFER BOX GD5L-16-254 LATCH    | BOX HEADER 16P | 1  |        |
| D700  | 2058100998 | DIODE KBPC3504                 | KBPC3504       | 1  |        |
| D701 D703 D723 D730<br>D734-735 D737<br>D739-741 D915-918<br>D921 D931 D933 D936<br>D940-943 D945-946 | 2058304100 | DIODE 1N4148M                  | 1N4148         | 24 |        |
| D710-711 D906 D914<br>D934-935 D708-709   | 2058400995 | DIODE 1N4935/4937 TAIWAN       | 1N4935         | 8  |        |
| D702 D704-705 D707  | 2058400997 | DIODE HER305(UF5404) TAIWAN    | HER305         | 4  |        |
| D727 D923-924<br>D927-928 D728-729<br>D725 D732 D726 D920<br>D738 D716                                | 2058100996 | DIODE RECTIFIER LT1N4006(4007) | 1N4006         | 13 |        |
| D929 D902   | 2058100105 | DIODE LT1N5402(1N5404) F       | 1N5402         | 2  |        |
| D910 D912   | 2058400996 | DIODE 1N4934 TAIWAN            | 1N4934         | 2  |        |
| D706 D712 D722 D733   | 2058300996 | DIODE MUR1520 MOTOROLA         | U1520          | 4  | S-4000 |
| D718 D720 D713-714  | 2058300995 | DIODE MUR1540 MOTOROLA         | U1540          | 4  |        |
| D717 D719   | 2058400999 | DIODE SF1604G "C" TAIWAN       | SF1604G-"C"    | 2  |        |
| D721 D724   | 2058400998 | DIODE SF1604G "A" TAIWAN       | SF1604G-"A"    | 2  |        |
| D715 D731 D901  | 2058310993 | DIODE UZP-18B PYUNG CHANG      | 18BM/1W        | 3  |        |
| D742  | 2058500033 | DIODE ZENER UZ-3.3B(1N5226B)   | 3.3BM          | 1  |        |
| D736 D913 D938-939<br>D947  | 2058501076 | DIODE ZENER UZ-7.5B(1N5236B)   | 7.5BM          | 5  |        |
| D930  | 2058500969 | DIODE ZENER 6.2B(1N5234B)      | 6.2BM          | 1  |        |
| D937 D919   | 2058512190 | DIODE ZENER 10V 1W(1N4740A)    | 10BM/1W        | 2  |        |
| D903-904  | 2058510150 | DIODE ZENER UZP-15BM(1N4744A)  | 15BM/1W        | 2  |        |
| L701-706  | 2648609800 | FERRITE BEAD(10*12)MM SMA-4000 | FERRITE BEAD   | 6  |        |
| IC904-905   | 2178304090 | IC HYBRID SWITCHING B          | HYBRID B       | 2  | S-4000 |
| IC901-902   | 2178304091 | IC HYBRID SWITCHING A          | HYBRID A       | 2  | S-4000 |
| IC705   | 2118080340 | IC BA10393 ROHM                | BA10393        | 1  |        |
| IC703   | 2128514004 | IC M74HC4024BIR STM            | 74HC4024       | 1  |        |
| IC704   | 2118031900 | IC OSCILLATOR (7.3728MHZ)      | OSC            | 1  |        |
| IC701   | 2118031700 | CC TC1427CPA TELCOM            | TC1427         | 1  |        |
| IC903 IC906-907   | 2168220982 | IC NE5532(SIGNETICS)           | NE5532N        | 3  |        |
| IC702   | 2118031800 | IC SG3525AN SILICON GENERAL    | SG3525         | 1  |        |
| CN701-703 CN902<br>CN904-905  | 4465998210 | TERMINAL(250)PCB TAB           | 250TAB         | 6  |        |
| LD901   | 2300052101 | LED LTL-307G-012A LITEON       | GREEN          | 1  |        |
| TH701   | 2438200040 | POSISTOR P42T7D100B04 PSR-2800 | POSISTOR       | 1  |        |
| TH902   | 2438007995 | POSISTOR PTFM04BH471Q2N34B0    | H1             | 1  |        |
| RN701   | 3099222273 | RES ARRAY 8POL 2.2K*4J         | 2.2K           | 1  |        |
| RN702   | 3099103273 | RES ARRAY 8POL 10K*4           | 10K            | 1  |        |
| RN901   | 3099472273 | RES ARRAY 8POL 4.7K*4          | 4.7K           | 1  |        |
| RN902   | 3099102273 | RES ARRAY 8POL 1K*4            | 1K             | 1  |        |
| RN903   | 3099473273 | RES ANR 08Y 473 J ARRAY        | 47K            | 1  |        |
| R704 R708 R736 R742<br>R979-980 R998 R1023  | 3002100953 | RES CF 10K 1/5W F N            | 10KF           | 8  |        |
| R739 R723   | 3003715953 | RES CF 7.15K 1/5W FN SMA-4000  | 7.15KF         | 2  |        |
| R706 R743 R718 R707   | 3009569973 | RES CF 5.6 1/5W JN SMA-4000    | 5.6            | 4  |        |
| R745  | 3009124973 | RES CF 120K 1/5W J N           | 120K           | 1  |        |
| R741 R991-992   | 3009394973 | RES CF 390K 1/5W J N           | 390K           | 3  |        |
| R990  | 3002680953 | RES CF 68K 1/5W F N            | 68KF           | 1  |        |

|   |              |                               |            |    |        |
|---|--------------|-------------------------------|------------|----|--------|
| R993  | 3009184973   | RES CF 180K 1/5W J N          | 180K       | 1  |        |
| R729  | 3009273973   | RES CF 27K 1/5W J N           | 27K        | 1  |        |
| R1009 R968  | 3009334973   | RES CF 330K 1/5W J N          | 330K       | 2  |        |
| TH901   | 2438200060   | THERMISTOR NTC5D-400KPC       | THERMISTOR | 1  |        |
| R720 R740 R995<br>R1013-1014                                      | 3003221953   | RES CF2.21K 1/5W FN SMA-4000  | 2.21KF     | 5  |        |
| R733 R951 R974  | 3002392953   | RES CF 39.2K 1/5W F N         | 39.2KF     | 3  |        |
| R737 R940 R1001<br>R725 R728                                      | 3004280953   | RES CF 280 1/5W FN            | 280F       | 5  |        |
| R902 R1002 R1004<br>R1010 R1016 R1020                             | 3002121953   | RES CF 12.1K 1/5W F N         | 12.1KF     | 6  |        |
| R916 R912   | 3003866953   | RES CF 8.66K 1/5W FN          | 8.66KF     | 2  |        |
| R919 R922 R936 R939<br>R959                                       | 3005475953   | RES CF 47.5 1/5W FN SMA-4000  | 47.5F      | 5  |        |
| R932 R929   | 3002931953   | RES CF 93.1K 1/5W F N         | 93.1KF     | 2  |        |
| R937 R949 R973  | 3003453953   | RES CF 4.53K 1/5W FN SMA-4000 | 4.53KF     | 3  |        |
| R738 R942 R938<br>R734-735 R907 R1018<br>R1022                    | 3004953953   | RES CF 953 1/5W FN SMA-4000   | 953F       | 8  |        |
| R956 R1017 R1021  | 3002976953   | RES CF 97.6K 1/5W F N         | 97.6KF     | 3  |        |
| R960 R969 R724  | 3004464953   | RES CF 464 1/5W FN SMA-4000   | 464F       | 3  |        |
| R964 R913   | 3004536953   | RES CF 536 1/5W F N           | 536F       | 2  |        |
| R967 R982 R988  | 3002210953   | RES CF 21K 1/5W FN SMA-4000   | 21KF       | 3  |        |
| R926 R962-963 R918<br>R958 R930                                   | 3003348953   | RES CF 3.48K 1/5W FN SMA-4000 | 3.48KF     | 6  |        |
| R985 R971   | 3004475953   | RES CF 475 1/5W FN SMA-4000   | 475F       | 2  |        |
| R987 R1007 R954   | 3003590953   | RES CF 5.9K 1/5W FN SMA-4000  | 5.9KF      | 3  |        |
| R997 R746 R914  | 3009473973   | RES CF 47K 1/5W J N           | 47K        | 3  |        |
| R903 R1015 R965<br>R1019  | 3003162953   | RES CF 1.62K 1/5W FN SMA-4000 | 1.62KF     | 4  |        |
| R1006 R1005   | 3004237953   | RES CF 237 1/5W FN            | 237F       | 2  |        |
| R977  | 3005562953   | RES CF 56.2 1/5W FN SMA-4000  | 56.2F      | 1  |        |
| R1011-1012  | 3004100953   | RES CF 100 1/5W FN SMA-4000   | 100F       | 2  |        |
| R999 R984 R1024   | 3009151973   | RES CF 150 1/5W J N           | 150        | 3  |        |
| R943  | 3009330973   | RES CF 33 1/5W J N            | 33         | 1  |        |
| R950 R721 R748  | 3009750973   | RES CF 75 1/5W JN             | 75         | 3  |        |
| R953 R996   | 3009223973   | RES CF 2.2K 1/5W J N          | 22K        | 2  |        |
| R976  | 3003931953   | RES CF 9.31K 1/5W FN SMA-4000 | 9.31KF     | 1  |        |
| R1003   | 3002680953   | RES CF 68K 1/5W F N           | 68KF       | 1  |        |
| R747  | 3039181472-T | RES MO 180 1W J T             | 180/1W     | 1  |        |
| R749 R983 R986  | 3039150472-T | RES MO 15 1W J N              | 15/1W      | 3  |        |
| R905 R904   | 3039223574   | RES MO 22K 2W                 | 22K/2W     | 2  | S-4000 |
| R908 R915 R917 R933<br>R935 R957 R961 R975<br>R978 R901 R989 R994 | 3059228673   | RES CE 0.22 3W J RQA T.H      | 0.22/3W    | 12 |        |
| R928 R972   | 3039339572-F | RES MO 3.3 2W JN SMA-4000     | 3.3/2W     | 2  |        |
| R921 R925 R927  | 3059302773   | RES CE 3K 5W J M              | 3K/5W      | 3  |        |
| R906  | 3039271572-F | RES MO 270 2W J N             | 270/2W     | 1  |        |
| R947  | 3039399572-F | RES MO 3.9 2W JN SMA-4000     | 3.9/2W     | 1  |        |
| R945  | 3039183572-F | RES MO 18K 2W JN SMA-4000     | 18K/2W     | 1  |        |
| R1000   | 3039689572-F | RES MO 6.8 2W J N             | 6.8/2W     | 1  |        |
| R700  | 3039560572-F | RES MO 56 2W J N              | 56/2W      | 1  |        |
| R701-702 R909-910<br>R923-924                                     | 3039473574   | RES MO 47K 2W                 | 47K/2W     | 6  |        |
| R711 R713-714   | 3039220572-F | RES MO 22 2W J N              | 22/2W      | 10 |        |

|  |              |                                |            |    |        |
|--|--------------|--------------------------------|------------|----|--------|
| R726-727 R731-732<br>R911 R710 R981                            |              |                                |            |    |        |
| R717   | 3039472572-F | RES MO 4.7K 2W J N             | 4.7K/2W    | 1  |        |
| R719   | 3059103773   | RES CE 10K 5W J N              | 10K/5W     | 1  |        |
| R744 R712 R709 R730  | 3039279572-F | RES MO 2.7 2W J N              | 2.7/2W     | 4  | S-4000 |
| R705 R703  | 3039150572-F | RES MO 15 2W JN SMA-4000       | 15/2W      | 2  |        |
| R931 R934 R946 R948  | 3039100674   | RES MO 10 3W J P               | 10/3W      | 4  |        |
| R955   | 3039103572-F | RES MO 10K 2W JR               | 10K/2W     | 1  |        |
| R716   | 3039150472-T | RES MO 15 1W J N               | 15/1W      | 1  |        |
| R952   | 3059018803   | RES CE 0.01 10W F AXIAL        | 0.01/10W   | 1  |        |
| Q703-708 Q710-711  | 2048209999   | FET FQP50N06 (IRFZ44)          | FQP50N06   | 8  |        |
| T703   | 2828069610   | TRANS MAIN SWITCHING 20P S4000 | MAIN TRANS | 1  |        |
| Q701-702   | 2028900101   | IGBT N-CH IRG4PC50W IXR        | IRG4PC5W   | 2  |        |
| Q712 Q714 Q902 Q916<br>Q925 Q931 Q933<br>Q936-938 Q941         | 2008405998-T | 2N3904-AT                      | 2N3904     | 11 |        |
| Q923 Q929-930 Q915<br>Q919-920                                 | 2028407122   | TR NPN 2SC5200 TOSHIBA         | 2SC5200    | 6  |        |
| Q908   | 2028407995   | TR NPN MJE15032(MOTOROLA)      | MJE15032   | 1  |        |
| Q904   | 2028406114   | TR KTD2059-Y-U                 | KTD2059Y   | 1  |        |
| Q928   | 2028348100-T | TR NPN MPSW01A MOTOROLA        | MPSW01     | 1  |        |
| Q914   | 2008448099-T | TR NPN MPSA44 MOTOROLA         | MPSA44     | 1  |        |
| Q921   | 2008448100-T | TR NPN MPSA13 MOTOROLA         | MPSA13     | 1  |        |
| Q709 Q713 Q901 Q912<br>Q922 Q926-927 Q932<br>Q934-935 Q939-940 | 2008005998-T | 2N3906-AT                      | 2N3906     | 12 |        |
| Q905-906 Q909-911<br>Q903                                      | 2028107118   | TR PNP 2SA1943 TOSHIBA         | 2SA1943    | 6  |        |
| Q924   | 2028048100-T | TR PNP MPSW51A MOTOROLA        | MPSW51     | 1  |        |
| Q913   | 2008006100-T | TR PNP UPSA92 KEC              | UPSA92     | 1  |        |
| Q918   | 2028107995   | TR PNP MJE15033 (MOTOROLA)     | MJE15033   | 1  |        |
| VR901 VR903  | 3248322220   | RES SEMI RH0615C100222         | 2.2K       | 2  |        |
| VR902  | 3248310120   | RES SEMI RH0615C100101         | 100        | 1  |        |

#### INPUT B'D (4005188820)

|                            |              |                                |                |   |  |
|----------------------------|--------------|--------------------------------|----------------|---|--|
| C301-302 C401-402          | 3509221231-A | CAP CE B 220PF 50V K AXIAL     | CE220P         | 4 |  |
| C403-404                   | 3569104933-A | CAP CE MONO 0.1UF 50VZSMA-4000 | 104MC          | 2 |  |
| C31                        | 3409247131-T | CAP AF SG 470UF 16V 10X12.5    | 470/16         | 1 |  |
| C32-33                     | 3409210141-T | CAP AF RSG 100UF 25V 6 P       | 100/25         | 2 |  |
| CNO2                       | 4428592516   | WAFER BOX PIN 16P (PC-1635)    | WAFER BOX 16P  | 1 |  |
| CNO1                       | 4428592526   | WAFER BOX TPHB03-1419-26A      | BOX HEADER 26P | 1 |  |
| D31                        | 2058304100   | DIODE IN4148M                  | 1N4148         | 1 |  |
| IC301 IC401                | 2168220982   | IC NE5532(SIGNETICS)           | 5532N          | 2 |  |
| JK302 JK402                | 4438090310   | JACK COMBINATION CXLF-06L      | PHONE JACK     | 2 |  |
| JK301 JK401                | 4438094110   | XLR MAIL 3PIN E3MSTM3          | SPEACON        | 2 |  |
| LD31-32                    | 2308252262-T | SLR-54GGA 49                   | GRE            | 2 |  |
| R31                        | 3005475953   | RES CF 47.5 1/5W FN SMA-4000   | 47.5F          | 1 |  |
| R32                        | 3009330973   | RES CF 33 1/5W J N             | 33             | 1 |  |
| R33 R302 R308 R402<br>R408 | 3003100953   | RES CF 1K 1/5W F N             | 1KF            | 5 |  |
| R34                        | 3002100953   | RES CF 10K 1/5W F N            | 10KF           | 1 |  |
| R303 R309 R403 R409        | 3003909953   | RES CF 9.09K 1/5W F N          | 9.09KF         | 4 |  |
| R307 R401 R407 R301        | 3002200953   | RES CF 20K 1/5W F N            | 20KF           | 4 |  |
| R38-39                     | 3009101973   | RES CF 100 1/5W J N            | 100            | 2 |  |
| R305 R404-406 R304         | 3003200953   | RES CF 2K 1/5W FN SMA-4000     | 2KF            | 8 |  |

|                |            |                          |         |   |  |
|----------------|------------|--------------------------|---------|---|--|
| R310 R306 R410 |            |                          |         |   |  |
| SW31           | 4625996110 | SW SLIDE JSS 4319A 4C-3P | JSS4319 | 1 |  |

#### DISPLAY B'D (4005188840)

|               |              |                              |        |   |  |
|---------------|--------------|------------------------------|--------|---|--|
| AN705         | 4355843805   | CON ASS'Y 5P SMA-4000        | CON 5P | 1 |  |
| LD1           | 2308252262   | LED REF SLR-54MG R5 GRE ROHM | GRE    | 1 |  |
| LD2           | 2308252222   | LED REF SLR-54UR R5 RED ROHM | RED    | 1 |  |
| LD3           | 2308252302   | LED REF SLR 54DU R5 YEL      | YEL    | 1 |  |
| RO4           | 3009271973   | RES CF 270 1/5W J N          | 270    | 1 |  |
| RO1 RO3 RO6-7 | 3003100953   | RES CF 1K 1/5W F N           | 1KF    | 4 |  |
| RO2           | 3002100953   | RES CF 10K 1/5W F N          | 10KF   | 1 |  |
| RO5           | 3009472973   | RES CF 4.7K 1/5W J N         | 4.7K   | 1 |  |
| Q4-5          | 2008405998-T | 2N3904-AT                    | 2N3904 | 2 |  |

#### OUTPUT B'D (4005188850)

|                          |              |                             |              |   |  |
|--------------------------|--------------|-----------------------------|--------------|---|--|
| C501-502                 | 3639104255-T | CAP TL 104K 250V K SMA-4000 | 104K/250V    | 2 |  |
| C503-504                 | 3639474255   | CAP TL 474K 250V K          | 474K/250V    | 2 |  |
| CGND1                    | 4355866503   | RING TERMINAL 100MM         | GND          | 1 |  |
| JK1-2                    | 4438191710   | BINDING POST (2P) DOM.UL    | BINDING POST | 2 |  |
| ANL904-905<br>ANR904-905 | 4465998210   | TERMINAL(250)PCB TAB        | 250TAB       | 4 |  |

#### CONTROL B'D (4005188810)

|  |              |                                |                |    |  |
|--|--------------|--------------------------------|----------------|----|--|
| C6-8 C106 C206                                   | 3569104933-T | CAP MONO CE 0.1UF 50V          | 104MC          | 5  |  |
| C203 C103  | 3639224111-T | CAP ECQ-V 1H224JL2 0.22UF 50VJ | 0.22M          | 2  |  |
| C1-2   | 3409847041-T | CAP AF NP 47UF25V 8 P          | NP47/25        | 2  |  |
| C107 C207  | 3409847941-T | CAP AF NP 4.7UF 25V 6 P        | NP4.7/25       | 2  |  |
| C3 C9  | 3409222141-T | CAP AF RSG 220UF 25V J 8 P     | 220/25         | 2  |  |
| C5 C4 C104-105<br>C204-205                       | 3409210071-T | CAP AF RSG 10UF 50V 5 P        | 10/50          | 6  |  |
| C10-11   | 3409210171-T | CAP AF RSG 100UF 50V 8 P       | 100/50         | 2  |  |
| CN101 CN201                                      | 4428592516   | WAFER BOX PIN 16P (PC-1635)    | WAFER BOX 16P  | 2  |  |
| AN1  | 4428592526   | WAFER BOX TPHB03-1419-26A      | BOX HEADER 26P | 1  |  |
| BR101 BR201                                      | 2058100977   | DIODE BRIDGE DB103G/105G TAIWA | DB103          | 2  |  |
| D100-101 D200-201                                | 2058304100   | DIODE IN4148M                  | 1N4148         | 4  |  |
| IC103 IC203                                      | 2128000748   | IC 4N30 MOTOROLA               | 4N30           | 2  |  |
| IC101 IC201                                      | 2168220982   | IC NE5532(SIGNETICS)           | 5532N          | 2  |  |
| IC2  | 2118032126   | IC LM13600AN NATIONAL          | LM13600AN      | 1  |  |
| IC102 IC202                                      | 2118032040   | IC BA6124 ROHM                 | BA6124         | 2  |  |
| LD101 LD201                                      | 2308252262   | LED REF SLR-54MG R5 GRE ROHM   | GRE            | 2  |  |
| LD103 LD102<br>LD202-203                         | 2308252302   | LED REF SLR 54DU R5 YEL        | YEL            | 4  |  |
| LD104 LD204                                      | 2308252222   | LED REF SLR-54UR R5 RED ROHM   | RED            | 2  |  |
| R1-2 R11-12                                      | 3005475953   | RES CF 47.5 1/5W FN SMA-4000   | 47.5F          | 4  |  |
| R5 R4 R13-14 R108<br>R118 R208 R218              | 3003357953   | RES CF 3.57K 1/5W FN SMA-4000  | 3.57KF         | 8  |  |
| R8 R105 R117 R119<br>R121 R205 R217 R219<br>R221 | 3002100953   | RES CF 10K 1/5W F N            | 10KF           | 9  |  |
| R104 R124-125 R204<br>R224-225 R300              | 3009101973   | RES CF 100 1/5W J N            | 100            | 7  |  |
| R111 R25 R28 R122<br>R24 R6 R211 R7 R222<br>R9   | 3002200953   | RES CF 20K 1/5W F N            | 20KF           | 10 |  |
| R113 R106 R206 R213                              | 3009394973   | RES CF 390K 1/5W J N           | 390K           | 4  |  |
| R114 R214  | 3009392973   | RES CF 3.9K 1/5W J N           | 3.9K           | 2  |  |

|                            |              |                               |        |   |  |
|----------------------------|--------------|-------------------------------|--------|---|--|
| R128 R123 R116 R223 R228   | 3003562953   | RES CF 5.62K 1/5W FN SMA-4000 | 5.62KF | 5 |  |
| R100 R112 R212 R3          | 3003200953   | RES CF 2K 1/5W FN SMA-4000    | 2KF    | 4 |  |
| R209 R109                  | 3009750973   | RES CF 75 1/5W JN             | 75     | 2 |  |
| R201 R26                   | 3009472973   | RES CF 4.7K 1/5W J N          | 4.7K   | 2 |  |
| R115                       | 3002130953   | RES CF 13K 1/5W FN SMA-4000   | 13KF   | 1 |  |
| R126 R226                  | 3002348953   | RES CF 34.8K 1/5W FN SMA-4000 | 34.8KF | 2 |  |
| R202 R101                  | 3003100953   | RES CF 1K 1/5W F N            | 1KF    | 2 |  |
| R220 R120                  | 3004536953   | RES CF 536 1/5W F N           | 536F   | 2 |  |
| R207 R107                  | 3004649953   | RES CF 649 1/5W FN SMA-4000   | 649F   | 2 |  |
| R103                       | 3002124953   | RES CF 12.4K 1/5W FN SMA-4000 | 12.4KF | 1 |  |
| R210 R110                  | 3004200953   | RES CF 200 1/5W F N           | 200F   | 2 |  |
| R203                       | 3003162953   | RES CF 1.62K 1/5W FN SMA-4000 | 1.62KF | 1 |  |
| R102                       | 3003976953   | RES CF 9.76K 1/5W FN SMA-4000 | 9.76KF | 1 |  |
| SW1-2                      | 4628987210   | SW SPEC122SC051               | SW     | 2 |  |
| Q2-3 Q6 Q103 Q203          | 2008405998-T | 2N3904-AT                     | 2N3904 | 5 |  |
| Q101-102 Q201-202 Q204-205 | 2008005998-T | 2N3906-AT                     | 2N3906 | 6 |  |
| VR101 VR201                | 3228075410   | VR PI16 10KB (21 DETENT)      | 10KB   | 2 |  |

#### AC POWER B'D (4005188800)

|               |              |                                |                 |    |  |
|---------------|--------------|--------------------------------|-----------------|----|--|
| AC1           | 4355806910   | AC CABLE SMA-4000 DOM          | AC CABLE        | 1  |  |
| C801 C807     | 3649474251   | CAP ECQ-U2A474KV PANASONIC     | UV0.47/250      | 2  |  |
| C803-804      | 3549332107   | CAP CE 3300PF 400V SCB         | 0.0033          | 2  |  |
| C805-806 C808 | 3549222091   | CAP DE2E3KH222MA3B             | 0.0022          | 3  |  |
| C802          | 3649104251   | CAP ECQ-U2A104KV PANASONIC     | UV0.1/250       | 1  |  |
| C809          | 3509103450-T | CAP CE 0.01UF 500V Z           | 0.01/500        | 1  |  |
| L801-803      | 2698009930   | COIL TOROID 2MH-20AMP SMA-4000 | 2MH-20A         | 3  |  |
| CN812         | 4428596604   | LOCK WAFER LW-1143-04P         | CH-1143-04P     | 1  |  |
| F1-2          | 5508224230   | FUSE NB 31.8MM 15A/250V KS     | 15A             | 2  |  |
| F3            | 5508412239   | FUSE#218T 20MM 1A/250V UCSKJ   | 1A              | 1  |  |
| E801-802      | 4465998210   | TERMINAL(250)PCB TAB           | 250TAB          | 2  |  |
| R803-806      | 2438200100   | THERMISTOR POWER NTC 0.5D-30   | 30A             | 4  |  |
| R801-802      | 3039754574   | RES MO 750K 2W                 | 750K/2W         | 2  |  |
| SW15          | 4625996611   | SW POWER(C1350AT) ARCOLECTRIC  | SW POWER        | 1  |  |
| CN801-810     | 4465998210   | TERMINAL(250)PCB TAB           | 250TAB          | 10 |  |
| CN811         | 4465996202   | SCREW TERMINAL 2P              | SCREW TERMINAL2 | 1  |  |
| T801          | 2828069500   | TRANS POWER S-3000/4000        | 5.0VA           | 1  |  |



