

# SERVICE MANUAL

P O W E R  
**AMPLIFIER**

**M-1500/2000**

**interM**

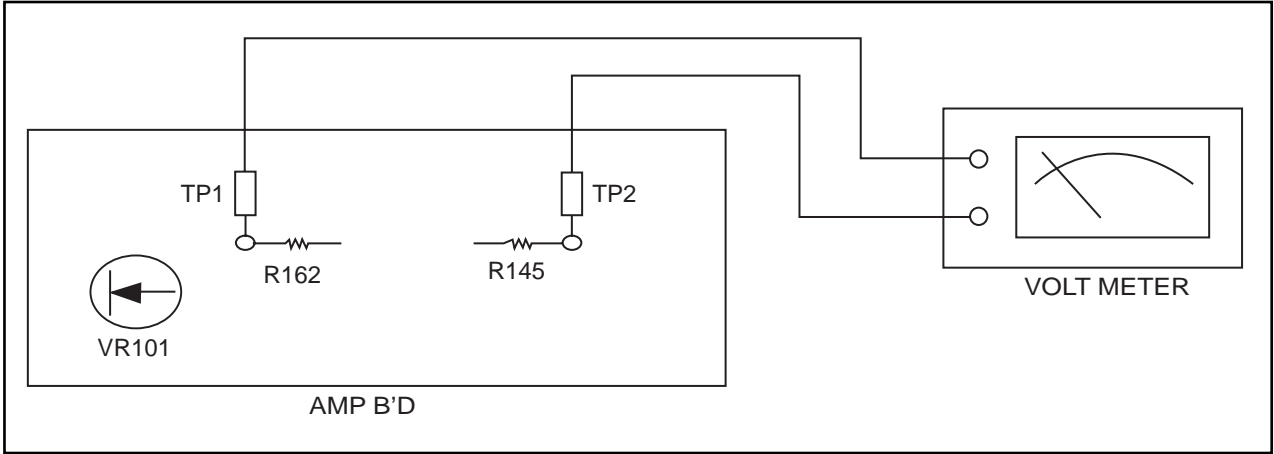
[www.inter-m.com](http://www.inter-m.com)  
MADE IN KOREA  
NO: 9007979000

**interM**

# ELECTRICAL ADJUSTMENT PROCEDURE

## ■ IDLE CURRENT

- A. Setting  
Set the master volume minimum.
- B. Connection



- C. Adjustment
  - Adjust VR101 so that the current through the R162, R145 become 10 milliampere.
  - When that voltage across the “TP1” to “TP2” becomes 30 millivolt, the current becomes 10 milliampere.

# CONTENTS

Electrical Adjustment Procedure . . . . .	1
Specifications . . . . .	2
Electrical Parts List . . . . .	3, 4
Top and Bottom View of P.C. Board . . . . .	5, 6
Wiring Diagram . . . . .	7
Block Diagram . . . . .	8
Schematic Diagram . . . . .	9, 10, 11, 12
Exploded View of Cabinet & Chassis / Mechanical Parts List . .	13, 14
Ass’y Drawing . . . . .	15, 16

SPECIFICATIONS

	M-1500	M-2000
Power Output Level f=1kHz, THD+N≤0.05% (Typical) STEREO RL=8Ω RL=4Ω BRIDGED RL=8Ω One Channel Driven f=1kHz THD+N≤0.05% RL=8Ω	500W+500W 750W+750W 1500W  500W	670W+670W 1000W+1000W 2600W  670W
Frequency Response RL=8Ω, P.=1W	0dB+0.5, −1.5dB: f=DC~55kHz	
Power Bandwidth Half Power, THD+N≤0.1% STEREO RL=8Ω	10Hz~40kHz	
Total Harmonic Distortion (THD+N) f=20Hz~20kHz, Half Power STEREO RL=8Ω RL=4Ω BRIDGED RL=8Ω	≤ 0.05% ≤ 0.07% ≤ 0.07%	
Channel Separation Half Power RL=8Ω, f=1kHz, ATT. max. Input 600Ω shunt	≥ 80dB	
Residual Noise (DIN Audio Filter)	≤ −70dB: ATT min.	
Signal-to-Noise Ratio DIN Audio, Input 600Ω Shunt	≥100dB	
Damping Factor RL=8Ω, f=1kHz	≥150	
Slew Rate 8Ω Full Swing STEREO BRIDGED	±40V/μ	
Sensitivity (ATT max.) Rated Power into 4Ω 1kHz	0dBm	
Voltage Gain (ATT max.) 4Ω 1kHz	37dB	38.2dB
Input Impedance (ATT max.)	≥ 20kΩ (Balance/Unbalance)	
Indicators	Power (Red) Protection (Mute) x 2 (Red) Clip x 2 (Orange) Signal x 4 (Green)	
Protection	Power SW ON/OFF muting Heatsink Temp ≥ 100°C (212°F)	
PC Limiter	RL < 2Ω	
Fan Circuit	−50°C (122°F)−60°C (140°F)− Low-Speed – Variable – Hi-Speed	
Controls	(Front) Power SW: Push up On/Push down Off Attenuator: 21-position dB calibrated (Rear) Mode SW: Bridge=BTL/STEREO/PARALLEL	
Power Source	AC 110V–240V, 50/60Hz	
Power Consumption 120V 230V–240V	1030W (1200VA) 950W	1450W (1680VA) 1300W
Weight	20kg	23kg
Dimensions	482(W) × 132(H) × 369(D) mm	
Connectors	Input XLR-3-31 type + 1/4” Phone (balanced), XLR Output 5-Way binding posts ×2, Speakon Terminal ×2	

0dB=0.775 Vrms, Half Power=1/2 Power Output Level (Rated Power)  
\* Using reactive 2Ω speakers at high power levels may cause overheating, excessive power consumption, and shutdowns.  
Please note that below 2Ω the PC limiter will work. Before using 2Ω speakers in a real application, test the system completely.

\* Specifications and design subject to change without notice for improvements.

ELECTRICAL PARTS LIST

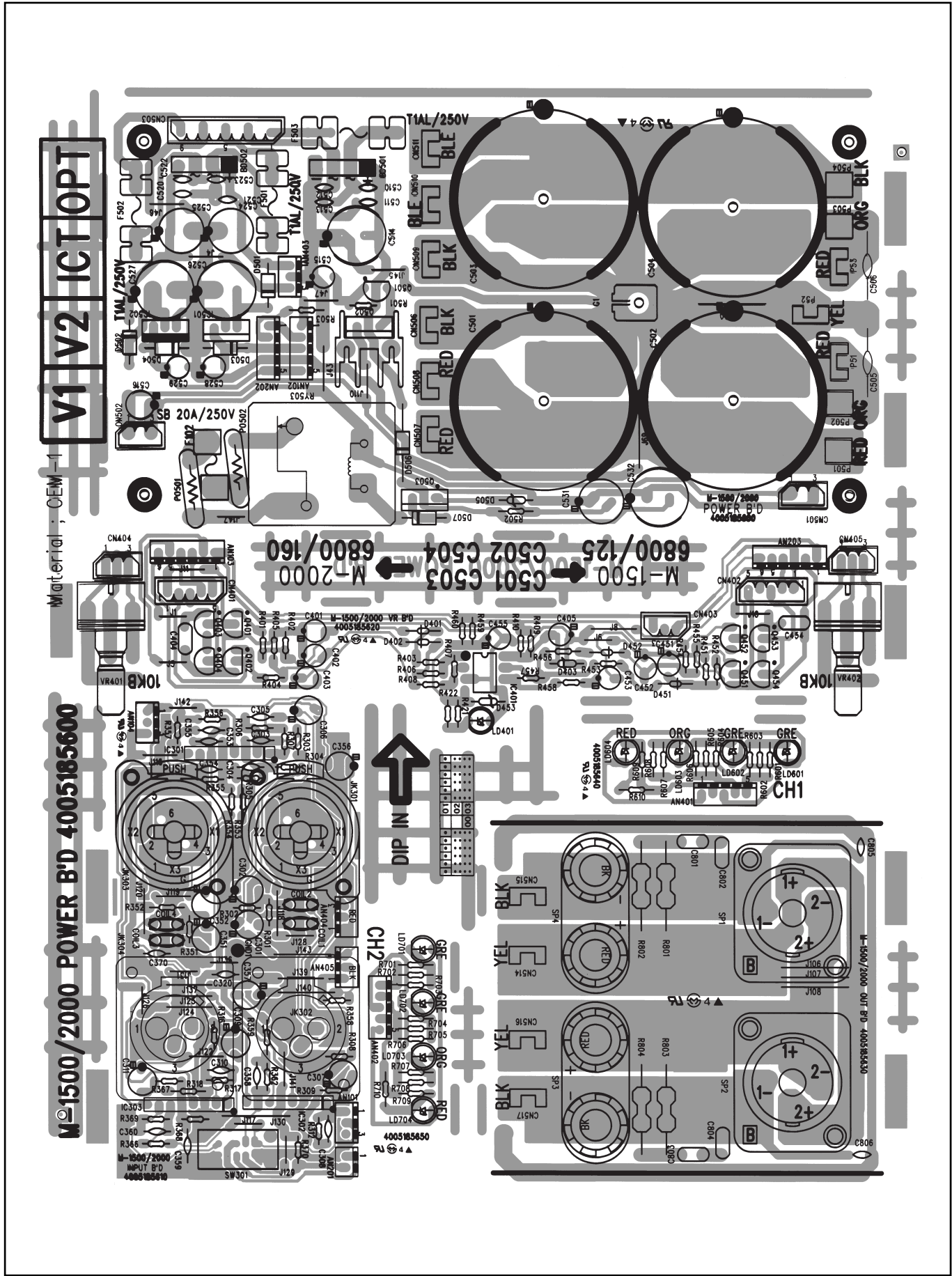
Ref No.	Part No.	Description	Value
POWER B'D (4005185600)			
AN102	4355824510	CON ASS'Y 5P	ASS'Y 5P
AN202	4355824515	CON ASS'Y 5P	ASS'Y 5P
AN403	4355767415	CON ASS'Y 3P (4P)	ASS'Y 3P
AN501-502	4355789603	CON ASS'Y 2P FAN	ASS'Y 3P
BD100	2058100998	DIODE KBPC3504	KBPC 3504
BD501-502	2058100987	DIODE BRIDGE (KPBP) 152	KPBP 152
C124	3549472407	CAP SPARK KILLER 0.0047UF 400V	0.0047/400
C501-504	3409268205	CAP HC 6800UF 125V M-1500	6800/125
C501-504	3409268209	CAP HC 6800UF 160V M-2000	6800/160
C505-506	3619474153	CAP POLY TM 0.47UF 250V	0.47/250
C510-513, C520-523	3509472530-T	CAP CE F 0.0047UF 50V Z	0.0047/50
C514	3408210261	CAP RSG 1000UF 35V SNAP 16P	1000/35
C515, C528-529	3409210071-T	CAP AF RSG 10UF 50V 5P	10/50
C516, C531	3409210141-T	CAP AF RSG 100UF 25V 6P	100/25
C524-525	3409222171-T	CAP AF RSG 220UF 50V SG 10P	220/50
C526-527	3408247169	CAP AF SG 470UF 35V	470/35
C532	3408210191	CAP RSA 100UF 100V SNAP 13P	100/100
CN501, CN502	4428594903	LA5268/LAB0640/2.5MM-03P	CN 3P
CN503	4428595009	LW5267/LWB0640/2.5MM-09P	CN 3P
CN506-511	4465998210	TERMINAL (250) PCB TAB	250T
D501-504, D506-507	2058100996	DIODE RECTIFIER LT1N4006 (4007)	1N 4006
D505	2058502240	DIODE ZENER UZ-24BM (23.1, 25.5)	UZ 24BM
FAN 1-2	7308999010	FAN F8025*24B MA-430/830	FAN1
F101	5568224933	CIRCUIT BREAKER 25A (UL/CSA) M-1500	25A (UL/CSA)
F101	5568224833	CIRCUIT BREAKER 15A (DOM, EUROPE) M-1500	15A (DOM, EUROPE)
F101	5568225033	CIRCUIT BREAKER 35A (UL/CSA) M-2000	35A (UL/CSA)
F101	5568224433	CIRCUIT BREAKER 20A (DOM, EUROPE) M-2000	20A (DOM, EUROPE)
F102	5568224933	CIRCUIT BREAKER (W58-XC4C12A-25)	25A
F501-503	5508412234	FUSE TS 20MM 1A/250V U/C/S	T1AL
IC501	2128610900	IC KA7815 COMMON	7815
IC502	2128610800	IC MC7915 COMMON	7915
INLET1	4448997410	AC INLET 6100.4315 250T SCURTE	AC INPUT
P51-53	4465998210	TERMINAL (250) PCB TAB	250T
P501	4355789207	CON ASS'Y RED	ASS'Y
P502-503	4355789306	CON ASS'Y 1P ORG	ASS'Y
P504	4355789403	CON ASS'Y 1P BLK	ASS'Y
PO501-502	2438200515	THERMISTOR POWER NTC 5D-15	TH1D-22
PT1	2828063800	TRANS POWER 120Version M-1500 (UL/CSA)	P.T (120 Version)
PT1	2828063810	TRANS POWER 220Version M-1500 (DOM)	P.T (220 Version)
PT1	2828063820	TRANS POWER 230Version M-1500 (EUROPE)	P.T (230 Version)
PT1	2828063840	TRANS POWER 240Version M-1500 (EUROPE)	P.T (240 Version)
PT1	2828063700	TRANS POWER 120Version M-2000 (UL/CSA)	P.T (120 Version)
PT1	2828063710	TRANS POWER 220Version M-2000 (DOM)	P.T (220 Version)
PT1	2828063720	TRANS POWER 230Version M-2000 (EUROPE)	P.T (230 Version)
PT1	2828063730	TRANS POWER 240Version M-2000 (EUROPE)	P.T (240 Version)
Q501	2008606108-T	TR NPN KTC2240BL (KTC 3200BL)	KTC 2240BL
Q502	2028407990	TR NPN 2SC 3298A(Y), KTC4370A(Y)	KTC 4370
Q503	2028406113	TR NPN KTD 2058Y (D880Y)	D2058
R501	3009122973	RES CF 1.2K 1/5W J N	1.2K
R502	3009822973	RES CF 8.2K 1/5W J N	8.2K
R503	3009102973	RES CF 1K 1/5W J N	1K
RY503	5528009993	RELAY VH-24H O.E.G./TAKAMISAWA	T9A S1D 22-24
SW101	4625996611	SW POWER (IC1350AT) ARCOLECTRIC	POWER SWITCH
INPUT B'D (4005185610)			
AN101, AN104, AN201	4428599002	WAFER YW025-02	YW025-02P
AN404-405	4355789721	CON ASS'Y 3P VR	ASS'Y 3P
C301-302, C306, C311, C351-352, C356	3409210141-T	CAP AF RSG 100UF 25V 6P	100/25
C303, C353	3529050311-A	CAP CE SL 5P 50V M AXIAL	5P
C304-305, C308, C354-355, C358, C359	3529220311-A	CAP CE SL 22PF 50V J AXIAL	22P
C307, C357	3409210071-T	CAP AF 10UF 50V 5P	10/50

Ref No.	Part No.	Description	Value
C309	3409247071-T	CAP AF RSG 47UF 50V 6P	47/50
C310	3529330311-A	CAP CE SL 33PF 50V J AXIAL	33P
C320, C370	3529103531-A	CAP CE F 10000PF 25V Z	0.01/25
C360	3529470311-A	CAP CE SL 47PF 50V J AXIAL	47P
COIL 1-4	3908609980	EMI FILTER 2200PF	EMI FILTER 2200P
IC301-303	2168220989	IC NJM 2068L JRC	2068DD
JK301, JK303	4438090310	JACK COMBINATION CXLF-06L	COMBI
JK302, JK304	4408194310	XLR JACK (M) E503A0150N	XLR
R301, R351	3009823973	RES CF 82K 1/5W J N	82K
R302, R352	3009105973	RES CF 1M 1/5W J N	1M
R303-306, R353-356	3002150953	RES CF 15K 1/5W F N	15K 1%
R307, R357, R370	3009101973	RES CF 100 1/5W J N	100
R308, R358	3009103973	RES CF 10K 1/5W J N	10K
R309, R359	3003300953	RES CF 3K 1/5W FN	3K 1%
R312, R362	3003656953	RES CF 6.56K 1/5W FN	6.56K 1%
R316-317	3009563973	RES CF 56K 1/5W J N	56K
R318	3009104973	RES CF 100K 1/5W J N	100K
R366-367	3009303973	RES CF 30K 1/5W J N	30K
R368-369	3009153973	RES CF 15K 1/5W J N	15K
SW301	4618999910	SW SS65010-0203-9H-FN	SLIDE/2POLE
VR B'D (4005185620)			
AN103, AN203	4355801006	CON ASS'Y 6P FLAT	ASS'Y 6P
C401-402, C451-452	3409247971-T	CAP AF RSG 4.7UF 50V 5P	4.7/50
C403, C405, C453, C455	3409210071-T	CAP AF RSG 10UF 50V 5P	10/50
C404, C454	3609104120-T	CAP MA 0.1UF 100V J	0.1/100 (M)
CN401-402	4428595005	LW5267/LWB0640/2.5MM-05P	WAFMW5P2.54
CN403-405	4428595003	LW5267/LWB0640/2.5MM-03P	WAFMW3P2.54
D401-402, D451-452	2058304100	DIODE IN4148	1N 4148
D403, D453	2058502150	DIODE ZENER UZ-15BM (11.6, 12.4)	UZ 15BM
IC401	2118010332	IC NJM 5532DD JRC	NJM 5532DD
LD401	2308252222	LED REF SLR-54UR R5 RED ROHM	R5R
R401, R404, R409, R410, R451, R454, R459-460	3009102973	RES CF 1K 1/5W J N	1K
R402, R407, R455, R457	3009104973	RES CF 100K 1/5W J N	100K
R403, R406, R453, R456	3009222973	RES CF 2.2K 1/5W J N	2.2K
R405, R452	3009331973	RES CF 330 1/5W J N	330
R408, R458	3009273973	RES CF 27K 1/5W J N	27K
R421-422	3009472973	RES CF 4.7K 1/5W J N	4.7K
Q401-404, Q451-454	2008606104-T	TR NPN KTC 3198Y	KTC 3198
VR401-402	3227075410	VR RK 16311605A213A (RMG58)	10KB
OUTPUT B'D (4005185630)			
C801-804	3609104120-T	CAP MA 0.1UF 100V J	0.1/100 (M)
C805-806	3509103530-T	CAP CE F 0.01UF 50V Z	0.01/50
CN514-517	4465998210	TERMINAL (250) PCB TAB	250T
R801-804	3039100572-F	RES MO 10 2W J N	10 2W
SP1-2	4438091710	JACK SPEAKON (PCB INSERT TYPE)	SPEAKON
SP3-4	4438090210	TERMINAL BINDING POST 2P	SP-TER2P
LED 1/2 B'D (4005185640)			
AN401	4355824511	CON ASS'Y 5P	ASS'Y 5P
LD601-602	2308252262	LED RED SLR-54MG R5 GRE ROHM	R5GR
LD603	2308252302	LED REF SLR 54DU R5 YEL	R5OR
LD604	2308252222	LED REF SLR-54UR R5 RED ROHM	R5RE
R601-606	3009392973	RES CF 3.9K 1/5W J N	3.9K
R607-610	3009472973	RES CF 4.7K 1/5W J N	4.7K
LED 2/2 B'D (4005185650)			
AN402	4355824503	CON ASS'Y 5P	ASS'Y 5P
LD701, LD702	2308252262	LED REF SLR-54MG R5 GRE ROHM	R5GR
LD703	2308252302	LED REF SLR 54DU R5 YEL	R5OR
LD704	2308252222	LED REF SLR-54UR R5 RED ROHM	R5RE
R701-706	3009392973	RES CF 3.9K 1/5W J N	3.9K
R707-710	3009472973	RES CF 4.7K 1/5W J N	4.7K

Ref No.	Part No.	Description	Value
C101	3409247041-T	CAP AF RSG 47UF 25V 5P	47/25
C103, C105	3409210141-T	CAP AF RSG 100UF 25V 6P	100/25
C106-109	3409247971-T	CAP AF RSG 4.7UF 50V 5P	4.7/50
C111-112, C117, C120	3609472120-T	CAP MA 0.0047UF 100V J	0.0047/100 (M)
C114	3609473120-T	CAP MA 0.047UF 100V	0.047/100 (M)
C118-119	3609273120-T	CAP MA 0.027UF 100V J	0.027/100 (M)
C122	3409247071-T	CAP AF RSG 47UF 50V 6P	47/50
C123	3409810141-T	CAP AF NP 100UF 25V	100/25 NP
CN101, CN104	4428599002	WAFER YW025-02	YW025-02P
CN102	4428595005	LW5267/LWB0640/2.5MM-05P	WAFMW5P2.54
CN103	4428595006	LW5267/LWB0640/2.5MM-06P	WAFMW6P2.54
CN106-108	4465998210	TERMINAL (250) PCB TAB	
CR102, CR115-116	3509101231-A	CAP CE B 100PF 50V K AXIAL	100P
CR104	3529330311-A	CAP CE SL 33PF 50V J AXIAL	33P
CR110	3529680311-A	CAP CE SL 68PF 50V J AXIAL	68P
CR113	3529050311-A	CAP CE SL 5P 50V M AXIAL	5P
CR124-125	3509331231-A	CAP CE B 330PF 50V K AXIAL	330P
CR123	3529220311-A	CAP CE SL 22PF 50V J AXIAL	22P
D101, D105-106, D124, D134	2058100996	DIODE RECTIFIER LT1N4006 (4007)	1N 4006
D103-104, D107-114, D119-120, D123	2058304100	DIODE IN4148	1N 4148
D116, D118	2058512190	DIODE ZENER 10V 1W (IN4740A)	UZ 10BM/1W
D121-122	2058322100	DIODE 1SS145 ROHM	1SS142
D126, D125	2058100110	DIODE PS2010 PYUNG CHANG	PS207
IC101	2118010232	IC NJM072D JRC	NJM 072D
IC102	2118050410	IC TA7317P TOSHIBA	TA 7317P
L101	2648099940	COIL INDUCTOR 1.2UM	1.2uH
Q101, Q104	2028407990	TR NPN 2SC 3298A(Y), KTC4370A(Y)	KTC 4370
Q102	2028107984	TR PNP 2SA 1306A (Y), KTA1659A(Y)	2SA 1659
Q103, Q137	2008207100-T	TR PNP 2SA 970BL-TPE2	2SA 970BL
Q105	2008400960	TR NPN 2SC 1567A-R MATSUSHITA	2SC 1567A
Q106	2008206997-T	TR PNP KTA 949Y (KTA 1024) KEC M-1500	KTA 949Y
Q106	2008005999	TR PNP 2SA 1546 NEC M-2000	2SA 1546
Q107	2008606107-T	TR NPN KTC 2229Y (KTC 3206Y) M-1500	KTC 2229Y
Q107	2008405999	TR NPN 2SC4001 NEC M-2000	2SC 4001
Q108	2028407990	TR NPN 2SC 3298A(Y), KTC4370A(Y) M-1500	2SC 4370A
Q108	2028407995	TR NPN MJE15032 (MOTOROLA) M-2000	MJE15032
Q109	2028811998	FET N-CH 2SK215 HITACHI	2SK 215
Q110	2028611998	FET P-CH 2SJ 78 HITACHI	2SJ 78
Q111	2028107984	TR PNP 2SA 1306A(Y), KTA 1659A(Y) M-1500	KTA 1659
Q111	2028107995	TR PNP MJE15033 (MOTOROLA) M-2000	MJE15033
Q121-126	2028407122	TR NPN 2SC5200 TOSHIBA (M-1500)	2SC5200
Q121-126	2028407888	TR NPN 2SC 3264 W/ACC (M-2000)	2SC3264
Q127, Q138	2008606108-T	TR NPN KTC2240BL (KTC 3200BL)	KTC 2240BL
Q131-136	2028107118	TR PNP 2SA1943 TOSHIBA (M-1500)	2SA1943
Q131-136	2028107944	TR PNP 2SA 1295 W/ACC (M-2000)	2SA1295
R101	3009561973	RES CF 560 1/5W J N	560
R102	3009113973	RES CF 11K 1/5W J N	11K
R103	3009331973	RES CF 330 1/5W J N	330
R104	3009121973	RES CF 120 1/5W J N	120
R105, R110, R129-130	3079151275	RES ERD-2FCVG 151T 1/4W R	FR150
R106	3009202973	RES CF 2K 1/5W J N	2K
R107	3002470953	RES CF 47K 1/5W F N M-1500	47K 1%
R107	3009303973	RES CF 30K 1/5W J N M-2000	30K
R108	3009222973	RES CF 2.2K 1/5W J N	2.2K
R109	3002180953	RES CF 18K 1/5W FN M-1500	18K 1%
R109	3009303973	RES CF 30K 1/5W J N M-2000	30K
R111-112	3009564973	RES CF 560K 1/5W J N	560K
R113	3079331275	RES ERD-2FCVG 331T 1/4W R	FR 330
R114	3079680275	RES ERD-2FCVG 680T 1/4W R	FR 68
R115, R131-132	3079470275	RES ERD-2FCVG 470T 1/4W R	FR 47
R116-117, R177, R179, R184	3009104973	RES CF 100K 1/5W J N	100K
R118-119, R125	3009562973	RES CF 5.6K 1/5W J N	5.6K

Ref No.	Part No.	Description	Value
R120, R146-151, R164-169	3089101275	RES NFR 100 1/4W J R PHILKO	FR 100
R121	3079121275	RES ERD-2FCVG 121T 1/4W R	FR 120
R122-123	3008393273	RES CF 39K 1/4W J	39K 1/4W
R124	3079121275	RES ERD-2FCVG 121T 1/4W R	FR 120
R126	3009122973	RES CF 1.2K 1/5W J N	1.2K
R127-128	3039223475	RES MO 22K 1W R	22K 1W
R133	3089150275	RES NFR 15 1/4W J R PHILKO	FR 15
R134-139, R152-157	3089479275	RES NFR 4.7 1/4W J R PHILKO	FR 4.7
R140-145, R158-163	3049478783	RES CE 0.47 5W J T HAN NAE	0.47 5W
R170-171	3089332275	RES NFR 3.3K 1/4W J R PHILKO	FR 3.3K
R172-173	3009823973	RES CF 82K 1/5W J N M-1500	82K
R172-173	3009124973	RES CF 120K 1/5W J N M-2000	120K
R174	3039479572-F	RES MO 4.7 2W J N	4.7 2W
R175-176, R185	3009223973	RES CF 22K 1/5W J N	22K
R178	3009184973	RES CF 180K 1/5W J N	180K
R180	3009682973	RES CF 6.8K 1/5W J N	6.8K
R181	3009473973	RES CF 47K 1/5W J N	47K
R182-183	3009822973	RES CF 8.2K 1/5W J N	8.2K
R186-187	3009150973	RES CF 15 1/5W J N	15
RY501	5528009810	RELAY VKP-31H42	31H42
TH101	2438007993	POSISTOR PTH 9M04 BE 222TS 2F	BE222TS
TH102	2438007995	POSISTOR PTH 9M04 BH 471TS 2F	BH471TS
VR101	3248322220	RES SEMI CS 2.2KB 10/5	2.2KB

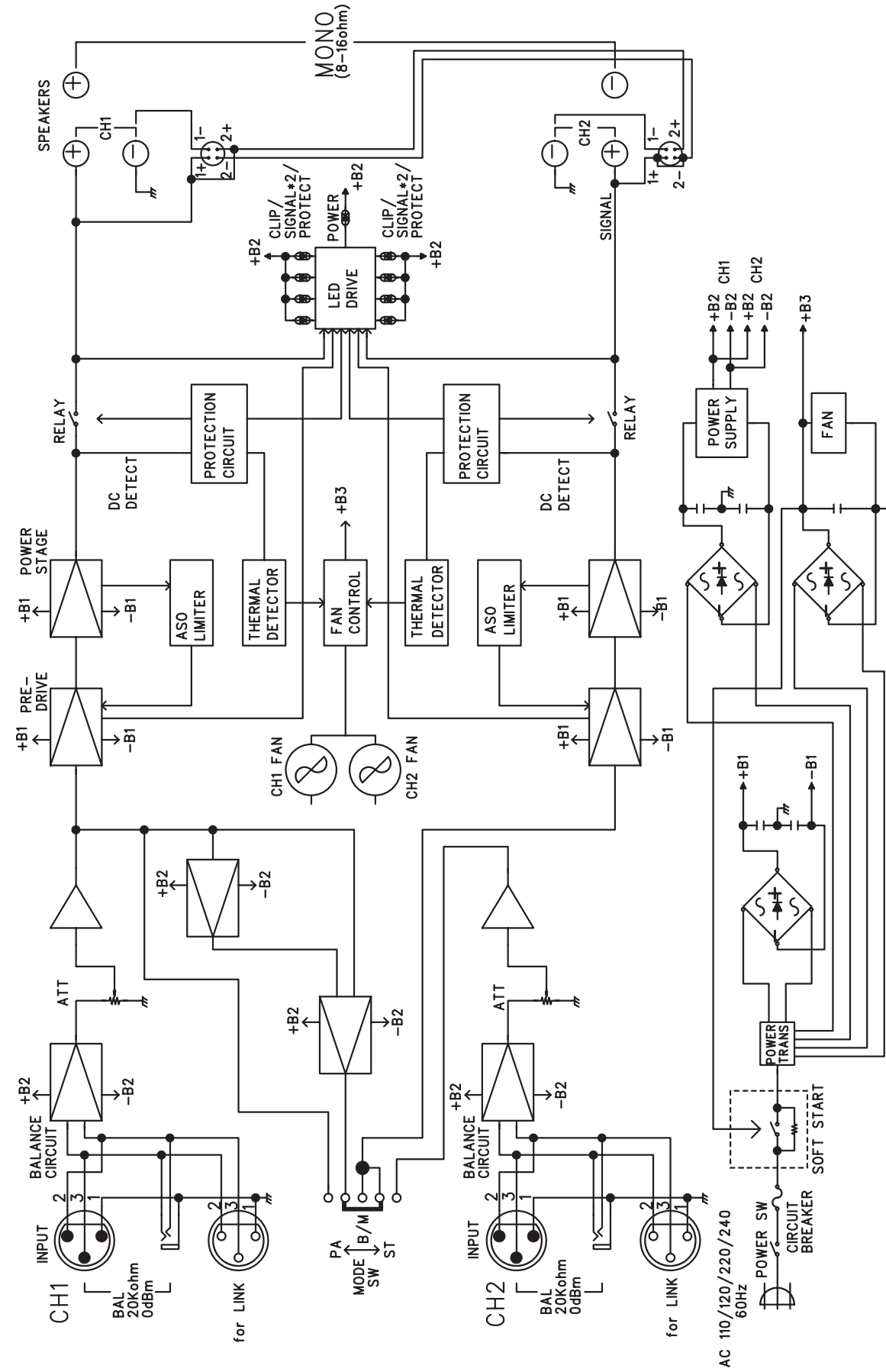
TOP AND BOTTOM VIEW OF P.C. BOARD



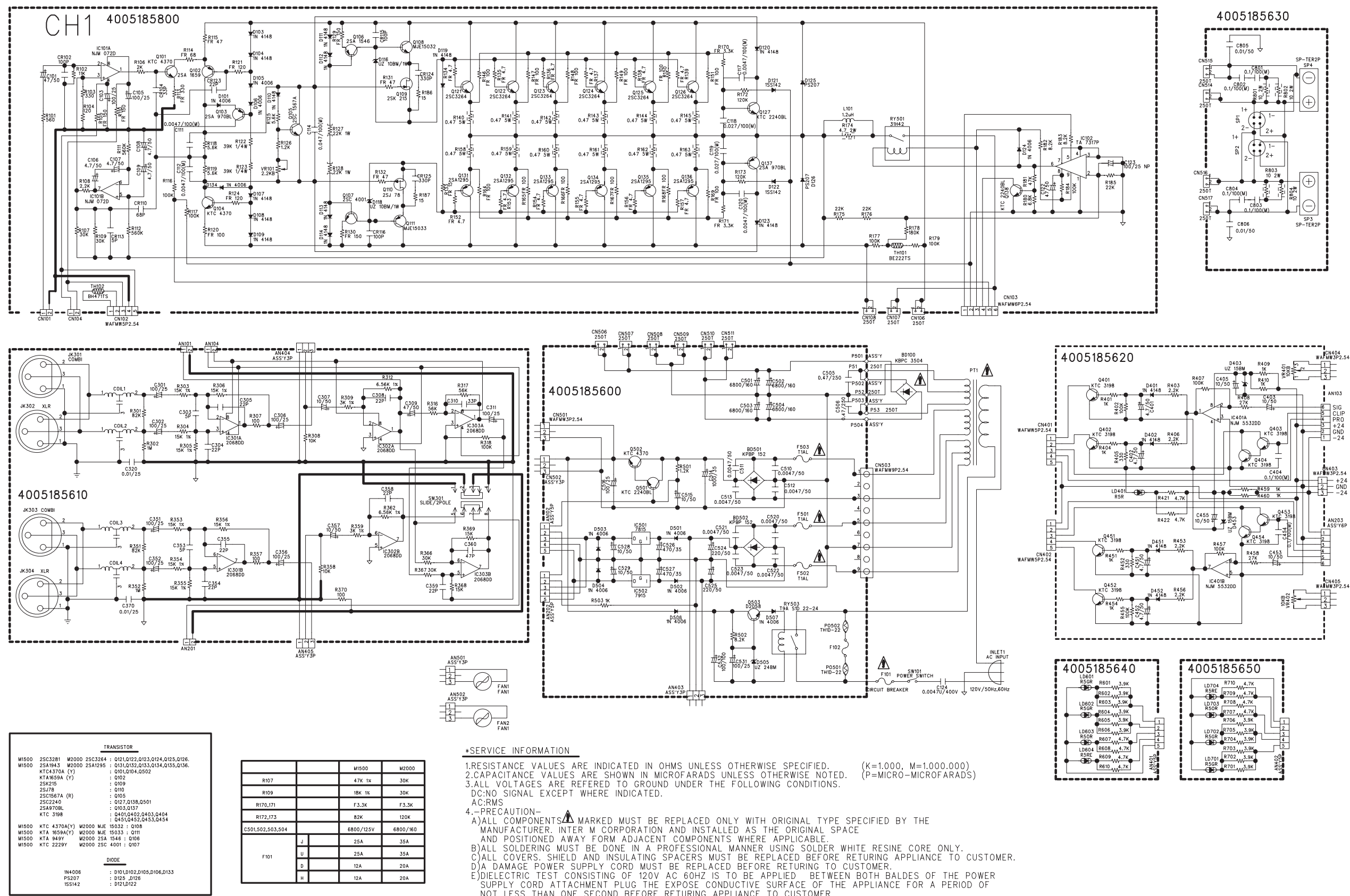




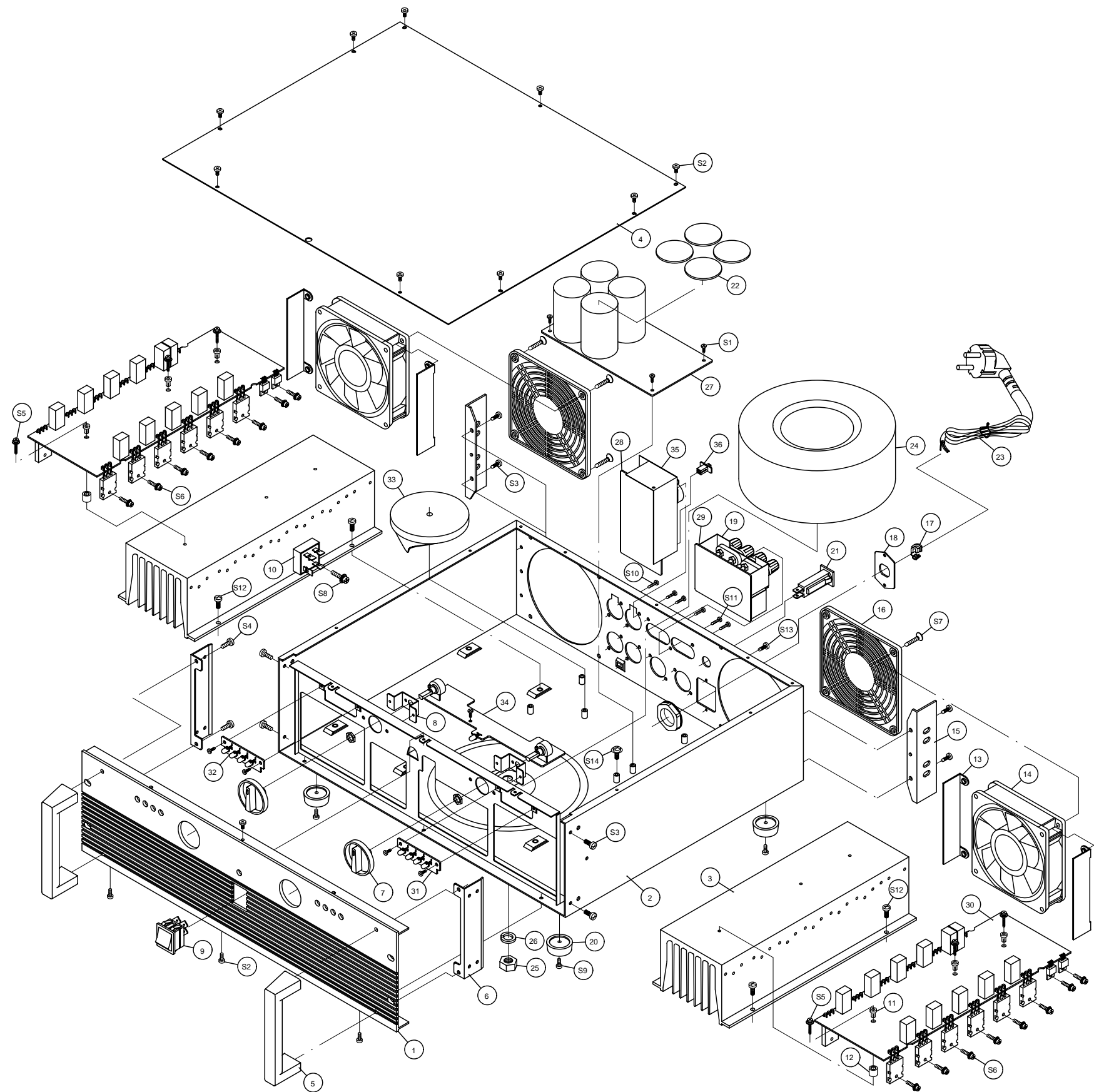
## BLOCK DIAGRAM



## SCHEMATIC DIAGRAM



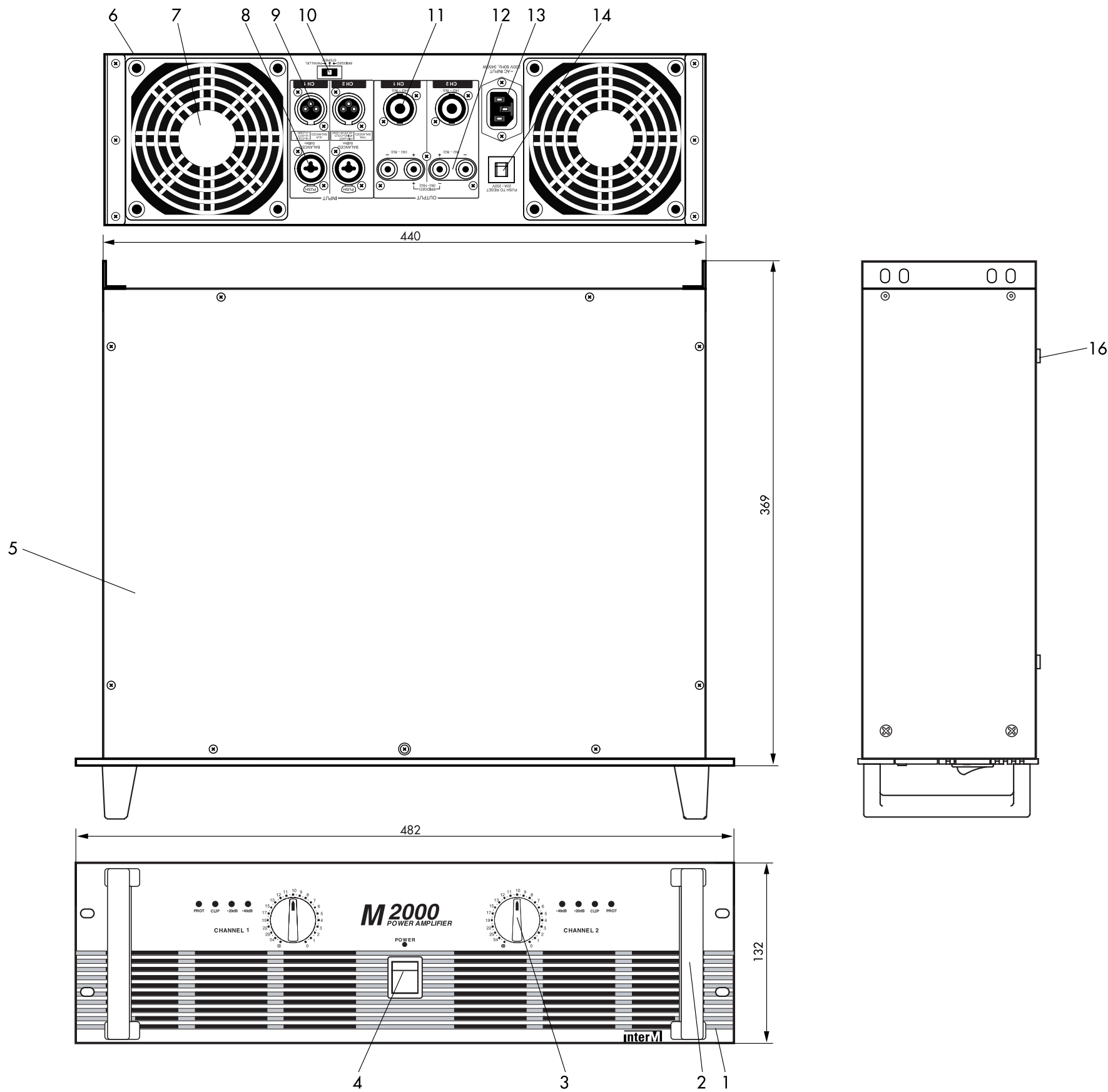
EXPLODED VIEW OF CABINET & CHASSIS/MECHANICAL PARTS LIST



S14	3WPTC 3X8B	8159340083	1	1	
S13	SCREW 2BTC 3X8B	8109230083	2	2	
S12	ASS'Y SCREW PM 4X8B	8095996910	8	8	
S11	SCREW 2FTC 3X12B	8129230123	4	4	
S10	SCREW 2BTC 3X10B	8109230103	13	13	
S9	SCREW 2WPTC 3X14B	8159230143	4	4	
S8	ASS'Y PM 4X18B	8095996930	1	1	
S7	SCREW FM 4X20B	8029140203	8	8	
S6	HEX MSPM 3X12Y	8099130121	34	58	
S5	ASS'Y PM3X22B	8095997110	6	6	
S4	SCREW 3BTC 4X14Y	8109340141	4	4	
S3	SCREW 3BTC 4X8B	8109340083	14	14	
S2	SCREW 3BTC 3X6B	8109330063	15	15	
S1	SCREW BM 3X6N	8009130064	5	5	
NO.	PART NAME	PART NUMBER	M-1500M-2000QTY		REAMRK

36	SLIDE KNOB	8545084520	1	1	
35	SHIELD FENCE	6163195710	1	1	
34	B'D VR	4005185620	1	1	
33	SPONGE	6735981710	0	1	M-2000
32	B'D LED 1/2	4005185640	1	1	
31	B'D LED 1/2	4005185650	1	1	
30	B'D AMP	4005185800	2	2	
29	B'D OUTPUT	4005185630	1	1	
28	B'D INPUT	4005185610	1	1	
27	B'D POWER	4005185600	1	1	
26	WASHER SPRING □08	8309100013	1	1	
25	NUT M10B	8209110013	1	1	
24	POWER TRANS	2828063710	0	1	M-2000
23	AC CORD	4308997310	1	1	M-1500
22	CAP RUBBER SPONGE	6715993320	0	4	M-2000
21	CIRCUIT BREAKER	5568224433	1	1	E 2
20	RUBBER FOOT	6335000610	4	4	B 2 EUROPE
19	BKT GUIDE	6503971810	1	1	
18	BKT	046505933510	1	1	
17	CORD STOPER	6518999810	1	1	
16	FAN COVER	8538999510(102mm)	0	2	M-2000
15	BKT (REAR)	8538999610(92mm)	2	0	M-1500
14	FAN	6505936210	2	2	
13	FAN BKT	7308998510	0	2	M-2000
12	SPACER	7308998320	2	0	M-1500
11	SPACER HOLDER	6503976210	0	4	M-2000
10	DIODE	6505953820	4	0	M-1500
9	POWER SW	6705998510	3	3	
8	BKT	6705998410	3	3	
7	KNOB (CONTROL)	2058100998	1	1	
6	BKT (HANDLE)	4625996611	1	1	
5	HANDLE	6505940110	2	2	
4	TOP COVER	048543985918	2	2	
3	HEAT SINK	6505935710	2	2	
2	CHASSIS MAIN	048603995230	2	2	
1	PANEL FRONT	046123495310	1	1	
NO.	PART NAME	PART NUMBER	M-1500M-2000QTY		REAMRK





No.	Description	Part No	Q'ty	Remark
1	FRONT PANEL	048602969012	1	
2	HANDLE(3SIZE)	048603995230	2	
3	CONTROL KNOB	048543985918	2	
4	POWER SW.	4625996611	1	
5	TOP COVER	046123495310	1	
6	MAIN CHASSIS	046121677811	1	220V
		046121677812	1	230V
		046121677813	1	120V
		046121677814	1	240V
7	FAN COVER	8538999510	1	
8	COMBINATION JACK	4438090310	2	
9	XLR JACK(M)	4408194310	2	
10	SLIDE KNOB	8545084520	1	
11	SPEAKON JACK	4438091710	2	
12	BINDING POST	4438088810	2	
13	AC INLET	4448997310	1	
14	CIRCUIT BREAKER	5568224433	1	
15	RUBBER FOOT	6335000610	4	

NOTE

NOTE