

SERVICE MANUAL

M A J E S T I C S E R I E S

AMPLIFIER

M-500/700/1000

interM

COMPANY	INTER.M	APPLICANT	REVISED NUMBER AND DATE
TYPE CODE		M.P	1. 2. 3. 4. 5. 6. 7. 8. 9.
APPROVED DATE			

DRAWN	CHECKED	APPROVED	NOTE

SHEET NO. _____

SCHEMATIC DIAGRAM

MODEL : M700/1000

CH1 4005187900

COMPANY INTER.M APPLICANT REVISED NUMBER AND DATE DRAWN CHECKED APPROVED NOTE

SIZE SHEET NO. SCHEMATIC DIAGRAM MODEL : M500

CH1 4005187700

CH2

4005187600

4005187610

4005187620

4005187650

4005187640

4005187630

*SERVICE INFORMATION

1.RESISTANCE VALUES ARE INDICATED IN OHMS UNLESS OTHERWISE SPECIFIED. (K=1,000, M=1,000,000)

2.CAPACITANCE VALUES ARE SHOWN IN MICROFARADS UNLESS OTHERWISE NOTED. (P=MICRO-MICROFARADS)

3.ALL VOLTAGES ARE REFERRED TO GROUND UNDER THE FOLLOWING CONDITIONS.

DC:NO SIGNAL EXCEPT WHERE INDICATED.

AC:RMS

4.-PRECAUTION-

A)ALL COMPONENTS MARKED MUST BE REPLACED ONLY WITH ORIGINAL TYPE SPECIFIED BY THE MANUFACTURER. INTER M CORPORATION AND INSTALLED AS THE ORIGINAL SPACE AND POSITIONED AWAY FROM ADJACENT COMPONENTS WHERE APPLICABLE.

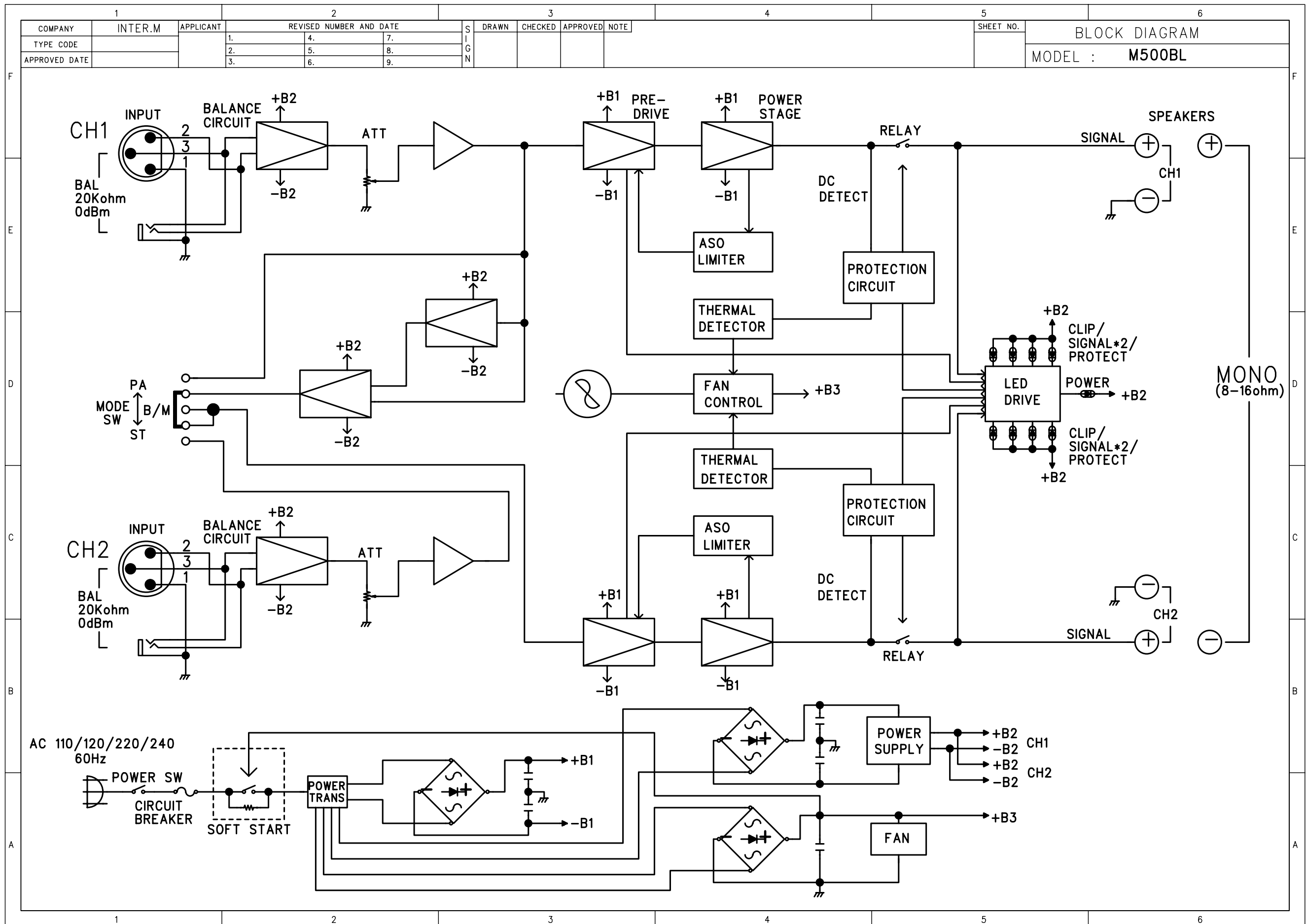
B)ALL SOLDERING MUST BE DONE IN A PROFESSIONAL MANNER USING SOLDER WHITE RESINE CORE ONLY.

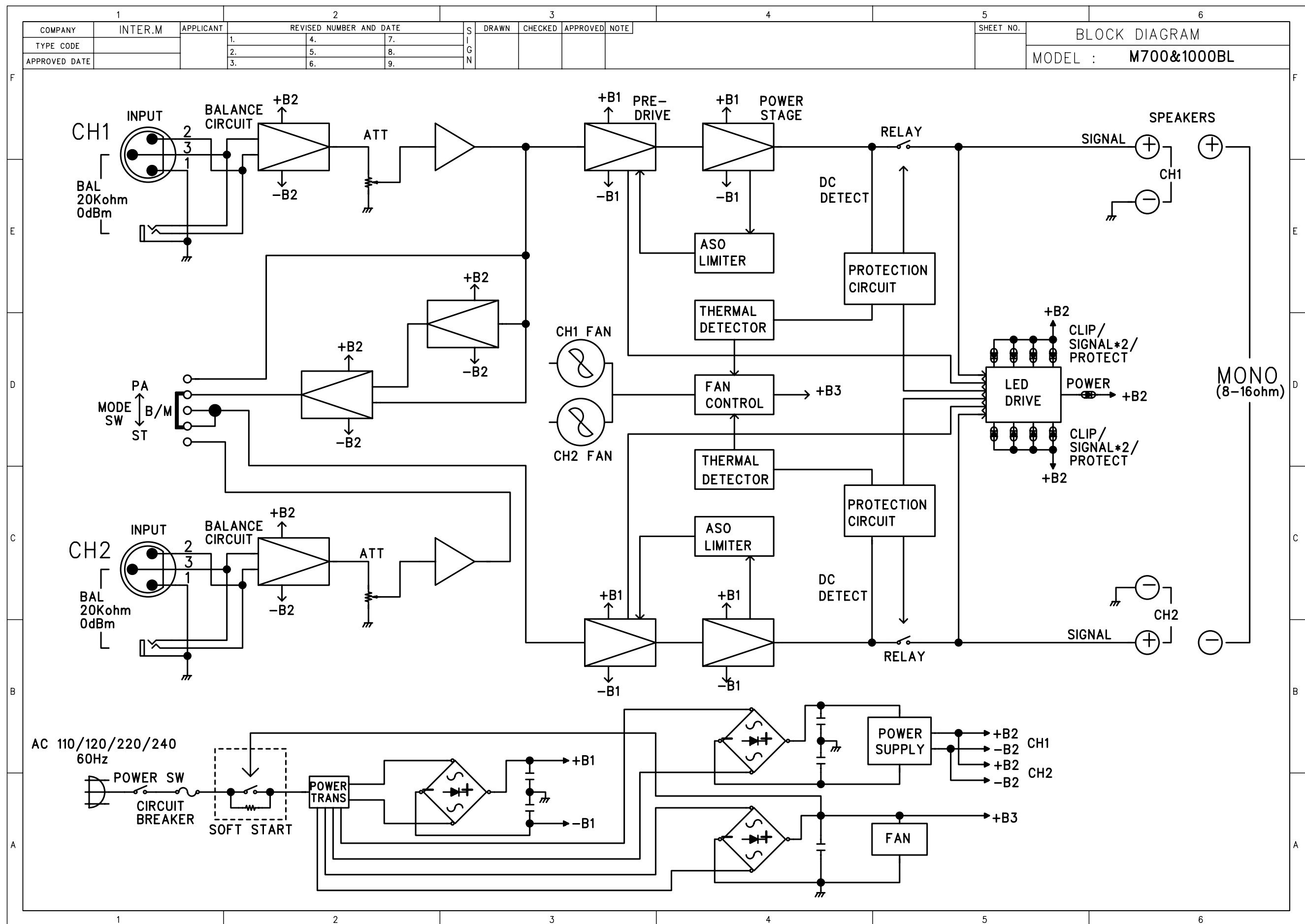
C)ALL COVERS, SHIELD AND INSULATING SPACERS MUST BE REPLACED BEFORE RETURNING APPLIANCE TO CUSTOMER.

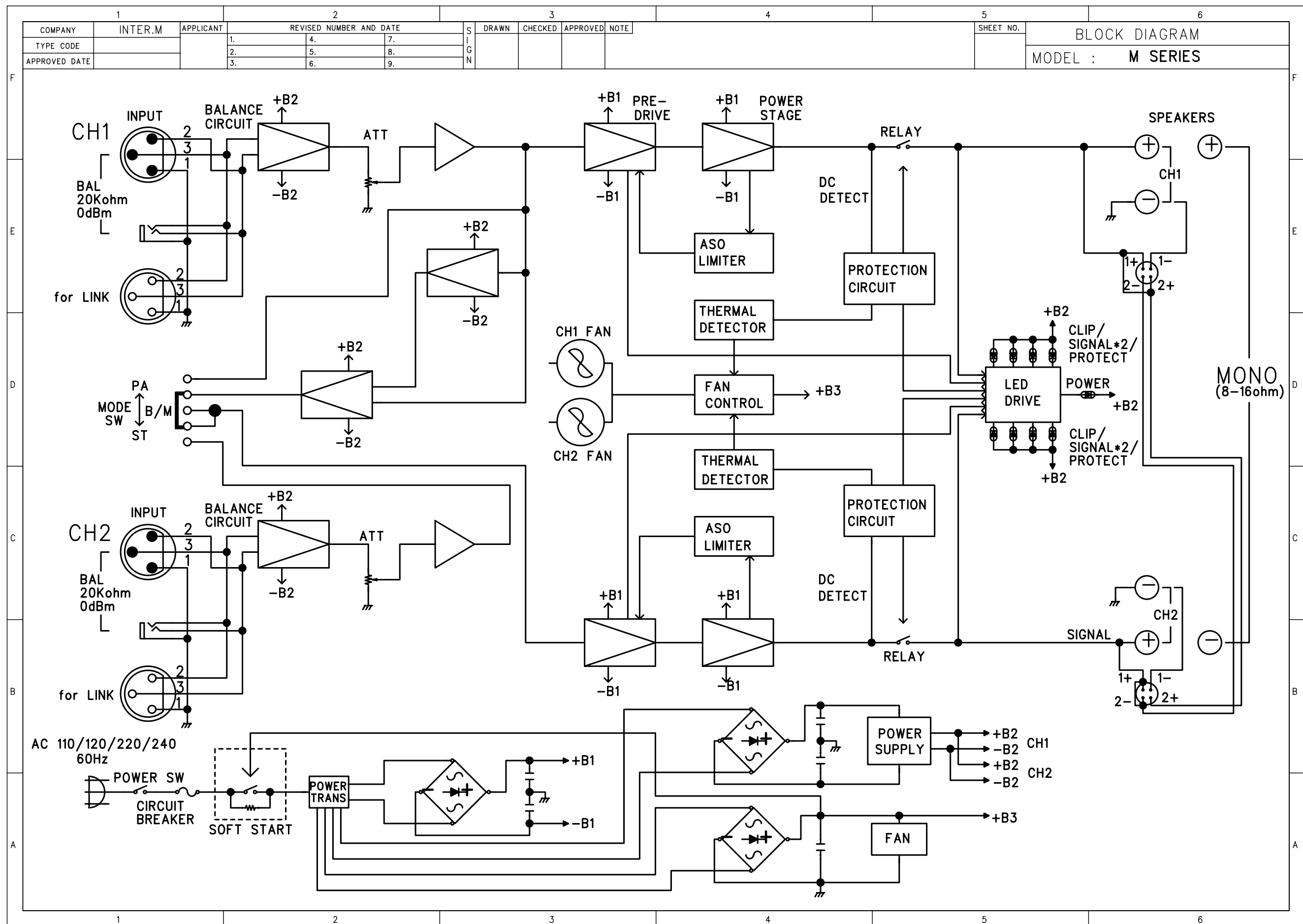
D)A DAMAGE POWER SUPPLY CORD MUST BE REPLACED BEFORE RETURNING TO CUSTOMER.

E)DIELECTRIC TEST CONSISTING OF 120V AC 60HZ IS TO BE APPLIED BETWEEN BOTH BALDES OF THE POWER SUPPLY CORD ATTACHMENT PLUG THE EXPOSE CONDUCTIVE SURFACE OF THE APPLIANCE FOR A PERIOD OF NOT LESS THAN ONE SECOND BEFORE RETURNING APPLIANCE TO CUSTOMER.

F)THE 3W MARKED RESISTORS ARE MOUNTED THE P.C.B ON SLEEVES.







ELECTRICAL PARTS LIST (M-500/700/1000)

Ref No.	Part No.	Description	Value	Qty
M500 AMP B'D(4005187700)				
CR102 CR115-116 CR201 CR215-216	3509101231-A	CAP CE B 100PF 50V K AXIAL	100P	6
CR223 CR123	3529220311-A	CAP CE SL 22PF 50V J AXIAL	22P	2
CR104 CR204	3529330311-A	CAP CE SL 33PF 50V J AXIAL	33P	2
CR113 CR213	3529050311-A	CAP CE SL 5P 50V C AXIAL	5P	2
CR110 CR210	3529680311-A	CAP CE SL 68PF 50V J AXIAL	68P	2
L101 L201	2648099940	COIL INDUCTOR 1.2UH	1.2uH	2
CN105	4428596606	LOCK WAFER LW-1143-06P	WAFHW6P	1
D101 D105-106 D134 D201 D205-206 D234	2058100996	DIODE RECTIFIER LT1N4006(4007)	1N 4006	8
D121-122 D221-222	2058322100	DIODE 1SS145 ROHM	1SS145	4
D125-126 D225-226	2058100110	DIODE RL207 PYUNG CHANG	PS207	4
D103-104 D107-114 D119-120 D123 D203-204 D207-214 D219-220 D223	2058304100	DIODE IN4148M	1N 4148	26
C103 C105 C203 C205	3409210141-T	CAP AF RSG 100UF 25V 6 P	100/25	4
C101 C201	3409247071-T	CAP AF RSG 47UF 50V 6 P	47/50	2
C106-109 C206-209	3409247971-T	CAP AF RSG 4.7UF 50V 5 P	4.7/50	8
Q109 Q209	2028811998	FET N-CH 2SK215 HITACHI	2SK 215	2
Q110 Q210	2028611998	FET P-CH 2SJ 78 HITACHI	2SJ 78	2
VR201-202	3248310320	RES SEMI RH0615C100103	10KB	2
C111-112 C117 C120 C211-212 C217 C220	3609472120-T	CAP MA 0.0047UF 100V J	0.0047/100(M)	8
C118-119 C218-219	3609273120-T	CAP MA 0.027UF 100V J	0.027/100(M)	4
C114 C214	3609473120-T	CAP MA 0.047UF 100V	0.047/100(M)	2
IC101 IC201	2118010232	IC NJM072D JRC	NJM 072D	2
R140-142 R158-160 R240-242 R258-260	3049478783	RES CE 0.47 5W J T HAN NAE	0.47 5W	12
R120 R146-148 R164-166 R220 R246-248 R264-266	3089101275	RES NFR 100 1/4W J R PHILKO	FR 100	14
R116-117 R179 R216-217	3009104973	RES CF 100K 1/5W J N	100K	5
R172-173 R272-273	3009473973	RES CF 47K 1/5W J N	47K	4
R102 R202	3009113973	RES CF 11K 1/5W J N	11K	2
R104 R124 R204 R224	3009121973	RES CF 120 1/5W J N	120	4
R121 R221	3079121275	RES ERD-2FCVG 121T 1/4W R	FR 120	2
R105 R110 R129-130 R205 R210 R229-230	3079151275	RES ERD-2FCVG 151T 1/4W R	FR 150	8
R170-171 R270-271	3089332275	RES NFR 3.3K 1/4W J R PHILKO	FR 3.3K	4
R133 R233	3089150275	RES NFR 15 1/4W J R PHILKO	FR 15	2
R107 R207	3009133973	RES CF 13K 1/5W J N	13K	2
R109 R209	3009153973	RES CF 15K 1/5W J N	15K	2
R126 R226	3009102973	RES CF 1K 1/5W J N	1K	2
R108 R208	3009222973	RES CF 2.2K 1/5W J N	2.2K	2
R127-128 R227-228	3039223475	RES MO 22K 1W R	22K 1W	4
R106 R206	3009202973	RES CF 2K 1/5W J N	2K	2
R103 R203	3009331973	RES CF 330 1/5W J N	330	2
R113 R213	3079331275	RES ERD-2FCVG 331T 1/4W R	FR 330	2
R122-123 R222-223	3009393273	RES CF 39K 1/4W JN	39K 1/4W	4
R134-136 R152-154 R234-236 R252-254	3089479275	RES NFR 4.7 1/4W J R PHILKO	FR 4.7	12
R174 R274	3039479572-F	RES MO 4.7 2W J N	4.7 2W	2
R115 R131-132 R215 R231-232	3079470275	RES ERD-2FCVG 470T 1/4W R	FR 47	6
R118-119 R125 R218-219 R225	3009562973	RES CF 5.6K 1/5W J N	5.6K	6
R101 R201	3009561973	RES CF 560 1/5W J N	560	2
R111-112 R211-212	3009564973	RES CF 560K 1/5W J N	560K	4
R114 R214	3079680275	RES ERD-2FCVG 680T 1/4W R	FR 68	2

TH101	2438007993	POSISTOR PTFM04BE222Q2N34B0	BE222TS	1
TH102	2438007995	POSISTOR PTFM04BH471Q2N34B0	BH471TS	1
Q105 Q205	2008400960	TR NPN 2SC 1567A-R MATSUSHITA	2SC 1567A	2
Q121-123 Q221-223	2028427998	TR 2SC 3856 W/ACC	2SC 3856	6
Q107 Q207	2008606107-T	KTC3206-Y-AT	KTC 3206Y	2
Q127 Q227	2008606108-T	KTC3200-BL-AT	KTC 3200BL	2
Q101 Q104 Q108 Q201 Q204 Q208	2028407990	KTC4370A-Y-U	KTC 4370Y	6
Q131-133 Q231-233	2028117994	TR PNP 2SA 1492 W/ACC	2SA 1492	6
Q102 Q111 Q202 Q211	2028107984	KTA1659A-Y-U	2SA 1659A	4
Q103 Q137 Q203 Q237	2008207100-T	TR PNP 2SA 970BL-TPE2	2SA 970BL	4
Q106 Q206	2008206997-T	KTA1024-Y-AT	KTA 1024Y	2
CN101 CN201	4428595004	LW5267/LWB0640/2.5MM-04P	WAFMW4P	2
CN102	4428595006	LW5267/LWB0640/2.5MM-06P	WAFMW6P	1
AN406 CN202	4428595003	CON WAFER A2505WV2-03P	WAFMW3P	2
D116 D118 D216 D218	2058502100	DIODE ZENER UZ-10BM(1N5240B)	UZ 10BM	4

M500 POWER B'D(4005187600)

BD501-502	2058100987	DIODE BRIDGE (KPBP) 152	KPBP 152	2
C505-506	3619474153	CAP POLY TM 0.47UF 250V	0.47/250	2
C510-513 C520-523	3509472530-T	CAP CE F 0.0047UF 50V Z	0.0047/50	8
AN105	4428596606	LOCK WAFER LW-1143-06P	WAFHW6P	1
CN503	4428595009	CON WAFER A2505WV2-09P	WAFMW9P	1
D124 D501-504 D506-507	2058100996	DIODE RECTIFIER LT1N4006(4007)	1N 4006	7
C515 C528-529	3409210071-T	CAP AF RSG 10UF 50V 5 P	10/50	3
C531-532	3409210171-T	CAP AF RSG 100UF 50V 8 P	100/50	2
C534-535	3409810141-T	CAP AF NP 100UF 25V	100/25 NP	2
C516 C533	3409247071-T	CAP AF RSG 47UF 50V 6 P	47/50	2
C514	3408210261	CAP RSG 1000UF 35V SNAP 16 P	1000/35	1
C526-527	3408247169	CAP AF SG 470UF 35V	470/35	2
C502 C504	3419010355	CAP LPW 10000UF/80V(JAMICON)K	10000/80	2
C524-525	3409222171-T	CAP AF RSG 220UF 50V SG 10 P	220/50	2
F501-503	4458999110	FUSE CLIP 5*20	FUSE CLIP	3
IC501	2128610900	IC KA7815 COMMON	7815	1
IC502	2128610800	IC MC7915 COMMON	7915	1
P51-53	4465998210	TERMINAL(250)PCB TAB	250T	3
P501	4355789207	CON ASSY RED	ASSY1P	1
P502-503	4355789306	CON ASSY 1P ORG	ASSY1P	2
P504	4355789403	CON ASSY 1P BLK	ASSY1P	1
R507 R514	3009104973	RES CF 100K 1/5W J N	100K	2
R511	3009184973	RES CF 180K 1/5W J N	180K	1
R509-510 R512-513 R515-516	3009223973	RES CF 22K 1/5W J N	22K	6
R505	3009473973	RES CF 47K 1/5W J N	47K	1
R503	3009102973	RES CF 1K 1/5W J N	1K	1
R504	3009682973	RES CF 6.8K 1/5W J N	6.8K	1
R501	3009122973	RES CF 1.2K 1/5W J N	1.2K	1
R502 R506 R508	3009822973	RES CF 8.2K 1/5W J N	8.2K	3
PO501-502	2438209770	THERMISTOR POWER TP 5D-15	TH5D-15	2
RY501	5528009950	RELAY HR-CR3A23 DC 24VH	RLY DC24V	1
RY503	5528007200	RELAY 821-W-1A-C DC24V	821W-1A-C	1
IC102	2118050410	IC TA7317P TOSHIBA	TA 7317P	1
Q501 Q504	2008606108-T	KTC3200-BL-AT	KTC 3220BL	2
Q502	2028407990	KTC4370A-Y-U	KTC 4370Y	1
Q503	2028406113	KTD2058-Y-U	KTD 2058Y	1
CN504	4428596604	LOCK WAFER LW-1143-04P	WAFHW4P	1
AN102 AN403	4355801014	CON ASSY 6P	ASSY6P	2
AN202	4355797219	CON ASSY 3P	ASSY3P	1
CN501	4428595003	LW5267/LWB0640/2.5MM-03P	WAFMW3P	1
D505	2058502240	DIODE ZENER UZ-24BM(1N5252B)	UZ 24BM	1

M500 INPUT B'D(4005187610)

C320 C370	3529103531-A	CAP CE F 10000PF 50V Z	10000P	2
C304-305 C308 C354-355 C358-359	3529220311-A	CAP CE SL 22PF 50V J AXIAL	22P	7
C310	3529330311-A	CAP CE SL 33PF 50V J AXIAL	33P	1

C360	3529470311-A	CAP CE SL 47PF 50V J AXIAL	47P	1
C303 C353	3529050311-A	CAP CE SL 5P 50V C AXIAL	5P	2
COIL1-4	3908609980	EMI FILTER 2200PF	EMI FILTER 2200PF	4
C307 C357	3409210071-T	CAP AF RSG 10UF 50V 5 P	10/50	2
C301-302 C306 C311 C351-352 C356	3409210141-T	CAP AF RSG 100UF 25V 6 P	100/25	7
C309	3409247071-T	CAP AF RSG 47UF 50V 6 P	47/50	1
JK301 JK303	4438090310	JACK COMBINATION CXLF-06L	COMBO	2
JK302 JK304	4408194310	XLR JACK (M) E503A0150N	XLR (M)	2
IC301 IC303 IC305	2118010432	IC NJM2068DD JRC	2068DD	3
R307 R357 R370	3009101973	RES CF 100 1/5W J N	100	3
R308 R358	3009103973	RES CF 10K 1/5W J N	10K	2
R318	3009104973	RES CF 100K 1/5W J N	100K	1
R303-306 R309 R353-356 R359 R368-369	3009153973	RES CF 15K 1/5W J N	15K	12
R302 R352	3009105973	RES CF 1M 1/5W J N	1M	2
R312 R362	3009333973	RES CF 33K 1/5W J N	33K	2
R366-367	3009303973	RES CF 30K 1/5W J N	30K	2
R316-317	3009563973	RES CF 56K 1/5W J N	56K	2
R301 R351	3009823973	RES CF 82K 1/5W J N	82K	2
SW301	4618999910	SW SS65010-0203-9H-FN	SLIDE/2POLE	1
AN404	4355789717	CON ASSY 3P VR	ASSY3P	1
AN405	4355789721	CON ASSY 3P VR	ASSY3P	1
AN101	4355789806	CON ASSY 4P INPUT	ASSY4P	1
AN201	4355789818	CON ASSY 4P	ASSY4P	1

M500 VR B'D(4005187620)

D401-402 D451-452	2058304100	DIODE IN4148M	1N 4148	4
C362 C403 C405 C455	3409210071-T	CAP AF RSG 10UF 50V 5 P	10/50	4
C401-402 C451-452	3409247971-T	CAP AF RSG 4.7UF 50V 5 P	4.7/50	4
VR401-402	3228070100	VR RK16311E0Z0113B	10KB	2
LD401	2300050105	LED LTL-307E-041A LITEON	307E-041A	1
C404 C454	3609104122-T	CAP MA 0.1UF 100V J SMALL	0.1/100(M)	2
IC401	2118010332	IC NJM 5532DD JRC	NJM 5532DD	1
R421-422	3009472973	RES CF 4.7K 1/5W J N	4.7K	2
R402 R407 R452 R457	3009104973	RES CF 100K 1/5W J N	100K	4
R401 R404 R409-410 R451 R454 R459-460	3009102973	RES CF 1K 1/5W J N	1K	8
R403 R406 R453 R456	3009222973	RES CF 2.2K 1/5W J N	2.2K	4
R408 R458	3009273973	RES CF 27K 1/5W J N	27K	2
R405 R455	3009331973	RES CF 330 1/5W J N	330	2
Q401-404 Q451-454	2008606104-T	RES CF 330 1/5W J N	KTC 3198Y	8
CN401-402	4428595005	LW5267/LWB0640/2.5MM-05P	ASSY5P	2
CN403	4428595006	LW5267/LWB0640/2.5MM-06P	WAFMW6P	1
CN404-406	4428595003	CON WAFER A2505WV2-03P	WAFMW3P	3
D403 D453	2058502150	DIODE ZENER UZ-15BM(1N5245B)	UZ 15BM	2

M500 LED1 B'D(4005187630)

LD707-708	2300052105	LED LTL-307G-041A LITEON	307G-041A	2
LD705	2300050105	LED LTL-307E-041A LITEON	307E-041A	1
LD706	2301053105	LED SLA-114L SHINYOUNG (ORG)	SLA-114L	1
R601-606	3009392973	RES CF 3.9K 1/5W J N	3.9K	6
R607-610	3009472973	RES CF 4.7K 1/5W J N	4.7K	4
AN401	4355824503	CON ASSY 5P	ASSY5P	1

M500 LED2 B'D(4005187640)

LD709	2300050105	LED LTL-307E-041A LITEON	307E-041A	1
LD710	2301053105	LED SLA-114L SHINYOUNG (ORG)	SLA-114L	1
LD711-712	2300052105	LED LTL-307G-041A LITEON	307G-041A	2
R701-706	3009392973	RES CF 3.9K 1/5W J N	3.9K	6
R707-710	3009472973	RES CF 4.7K 1/5W J N	4.7K	4
AN402	4355824503	CON ASSY 5P	ASSY5P	1

M500 OUTPUT B'D(4005187650)

C805-806	3509103530-T	CAP CE F 0.01UF 50V Z	0.01/50	2
SP1-2	4438091710	JACK SPEAKON (PCB INSERT TYPE)	SPEAKON	2
C801 C803	3609104120-T	CAP MA 0.1UF 100V J	0.1/100(M)	2

R801-804	3039100572-F	RES MO 10 2W J N	10 2W	4
SP3-4	4438190410	BINDING POST(2P)	BINDING POST(2P)	2
AN504	4428596604	LOCK WAFER LW-1143-04P	WAFHW4P	1

ASSY

INLET1	4448997410	AC INLET 6100.4315 250T SCURTE	AC INLET	1
F101	5568223433	CIRCUIT BREAKER W28-XQ1A-6A	CIRCUIT BREAKER	1
SW101	4625996611	SW POWER(C1350AT) ARCOLECTRIC	POWER SWITCH	1
FAN1	7308999013	FAN (F8025X24B-FS)	FAN1	1
BD100	2058100103	DIODE KBPC-2504 LUG TYPE	KBPC 2504	1
CN401-402	4428595005	LW5267/LWB0640/2.5MM-05P	ASSY5P	2
CON ASSY	4355892906	CON ASSY 4P	CON ASSY 4P	1
CON ASSY	4355789117	CON ASSY AC	CON ASSY AC	1
CON ASSY	4355893013	CONNECTOR ASSY 6P POWER P3500	CONNECTOR ASSY 6P POWER P35	1
ASSY	4355810803	GND TERMINAL ASSY (REF-2300)	GND TERMINAL ASSY (REF-2300)	1
F1	5508412239	FUSE#218T 20MM 1A/250V UCSKJ	FUSE 20MM	1
PT1	2828067221 2828067231 2828067241 2828067211 2828067231	TRANS POWER 220V M-500 TRANS POWER 230V M-500 TRANS POWER 240V M-500 TRANS POWER 120V M-500 TRANS POWER 230V M-500	C D E R	
AC CORD	4308997310 4308996710 4308998000 4308997710 4308999410	AC CORD DOME 3-CORES AC CORD (WITHOUT PLUG) AC CORD POWER FOR SAA CORD AC(UL3 125V 13A)MODEL7000 AC CORD V+VII6A-250VHOVV-F3G	C D E R	
AN501			ASSY3P	1

M-700/1000 AMP B'D(4005187900)

CR102 CR115-116	3509101231-A	CAP CE B 100PF 50V K AXIAL	100P	3
CR123	3529220311-A	CAP CE SL 22PF 50V J AXIAL	22P	1
CR104	3529330311-A	CAP CE SL 33PF 50V J AXIAL	33P	1
CR113	3509509030-T	CAP CE SL 5PF 50V J	5P	1
CR110	3529680311-A	CAP CE SL 68PF 50V J AXIAL	68P	1
L101	2648099940	COIL INDUCTOR 1.2UH	1.2uH	1
CN105	4428596606	LOCK WAFER LW-1143-06P	LOCK WAFER	1
D101 D105-106 D124 D134	2058100996	DIODE RECTIFIER LT1N4006(4007)	1N 4006	5
D121-122	2058322100	DIODE 1SS145 ROHM	1SS142	2
D126 D125	2058100110	DIODE RL207 PYUNG CHANG	RL207	2
D103-104 D107-114 D119-120 D123	2058304100	DIODE IN4148M	1N 4148	13
C123	3409810141-T	CAP AF NP 100UF 25V	100/25 NP	1
C103 C105 C122	3409210141-T	CAP AF RSG 100UF 25V 6 P	100/25	3
C101	3409247041-T	CAP AF RSG 47UF 25V 5 P	47/25	1
C106-109	3409247971-T	CAP AF RSG 4.7UF 50V 5 P	4.7/50	4
Q109	2028811998	FET N-CH 2SK215 HITACHI	2SK 215	1
Q110	2028611998	FET P-CH 2SJ 78 HITACHI	2SJ 78	1
VR101	3248310320	RES SEMI RH0615C100103	10KB	1
C111-112 C117 C120	3609472120-T	CAP MA 0.0047UF 100V J	0.0047/100(M)	4
C118-119	3609273120-T	CAP MA 0.027UF 100V J	0.027/100(M)	2
C114	3609473120-T	CAP MA 0.047UF 100V	0.047/100(M)	1
IC101	2118010232	IC NJM072D JRC	NJM 072D	1
R140 R142 R144 R158 R160 R162(for M700)	3049478783	RES CE 0.47 5W J T HAN NAE	0.47 5W	6
R140-144 R158-162(for M1000)	3049478783	RES CE 0.47 5W J T HAN NAE	0.47 5W	10
R120 R146-150 R164-168	3089101275	RES NFR 100 1/4W J R PHILKO	FR 100	11
R116-117 R177 R179 R184	3009104973	RES CF 100K 1/5W J N	100K	5
R172-173(for M700)	3009473973	RES CF 47K 1/5W J N	47K	2
R172-173(for M1000)	3009823973	RES CF 82K 1/5W J N	82K	2
R102	3009113973	RES CF 11K 1/5W J N	11K	1
R104 R124	3009121973	RES CF 120 1/5W J N	120	2
R121	3079121275	RES ERD-2FCVG 121T 1/4W R	FR 120	1
R105 R110 R129-130	3079151275	RES ERD-2FCVG 151T 1/4W R	FR 150	4
R170-171	3089332275	RES NFR 3.3K 1/4W J R PHILKO	FR 3.3K	2

R133	3089150275	RES NFR 15 1/4W J R PHILKO	FR 15	1
R178	3009184973	RES CF 180K 1/5W J N	180K	1
R107(for M700,CHAMP2350)	3009223973	RES CF 22K 1/5W J N	22K	1
R109(for M700,CHAMP2500)	3009133973	RES CF 13K 1/5W J N	13K	1
R107 R109	3009203973	RES CF 20K 1/5W J N	20K	2
R126	3009102973	RES CF 1K 1/5W J N	1K	1
R108	3009222973	RES CF 2.2K 1/5W J N	2.2K	1
R175-176 R185	3009223973	RES CF 22K 1/5W J N	22K	3
R127-128	3039223475	RES MO 22K 1W R	22K 1W	2
R106	3009202973	RES CF 2K 1/5W J N	2K	1
R103	3009331973	RES CF 330 1/5W J N	330	1
R113	3079331275	RES ERD-2FCVG 331T 1/4W R	FR 330	1
R122-123	3009393273	RES CF 39K 1/4W JN	39K 1/4W	2
R134-138 R152-156	3089479275	RES NFR 4.7 1/4W J R PHILKO	FR 4.7	10
R174	3039479572-F	RES MO 4.7 2W J N	4.7 2W	1
R115 R131-132	3079470275	RES ERD-2FCVG 470T 1/4W R	FR 47	3
R181	3009473973	RES CF 47K 1/5W J N	47K	1
R118-119 R125	3009562973	RES CF 5.6K 1/5W J N	5.6K	3
R101	3009561973	RES CF 560 1/5W J N	560	1
R111-112	3009564973	RES CF 560K 1/5W J N	560K	2
R180	3009682973	RES CF 6.8K 1/5W J N	6.8K	1
R114	3079680275	RES ERD-2FCVG 680T 1/4W R	FR 68	1
R182-183	3009822973	RES CF 8.2K 1/5W J N	8.2K	2
IC102	2118050410	IC TA7317P TOSHIBA	TA 7317P	1
TH101	2438007993	POSISTOR PTFM04BE222Q2N34B0	BE 222TS	1
TH102	2438007995	POSISTOR PTFM04BH471Q2N34B0	BH 471TS	1
Q105	2008400960	POSISTOR PTFM04BH471Q2N34B0	2SC 1567A	1
Q121 Q123 Q125(for M700)	2028427998	TR 2SC 3856 W/ACC	2SC 3856	3
Q121-125(for M1000)	2028427998	TR 2SC 3856 W/ACC	2SC 3856	5
Q107	2008606107-T	KTC3206-Y-AT	KTC 3206Y	1
Q127 Q138	2008606108-T	KTC3200-BL-AT	KTC 3200BL	2
Q101 Q104 Q108	2028407990	KTC4370A-Y-U	KTC4370A	3
Q131 Q133 Q135(for M700)	2028117994	TR PNP 2SA 1492 W/ACC	2SA 1492	5
Q131-135(for M1000)	2028117994	TR PNP 2SA 1492 W/ACC	2SA 1492	5
Q103 Q137	2008207100-T	TR PNP 2SA 970BL-TPE2	2SA 970BL	2
Q102 Q111	2028107984	KTA1659A-Y-U	KTA1659A	2
Q106	2008206997-T	KTA1024-Y-AT	KTA 1024Y	1
RY501	5528007700	RELAY AZ971-1A DC24V	VKP-31H42	1
CN101	4428595004	CON WAFER A2505WV2-04P	WAFER/4P	1
CN102	4428595005	LW5267/LWB0640/2.5MM-05P	WAFER/5P	1
CN103	4428595006	LW5267/LWB0640/2.5MM-06P	WAFER/6P	1
D116 D118	2058502100	DIODE ZENER UZ-10BM(1N5240B)	UZ 10BM	2

M-700/1000 POWER B'D(4005187800)

BD501-502	2058100979	DIODE BRIDGE (KBP01G/KBP153G)	KBP01G	2
C505-506	3619474153	CAP POLY TM 0.47UF 250V	0.47/250	2
C510-513 C520-523	3509472530-T	CAP CE F 0.0047UF 50V Z	0.0047/50	8
AN105 AN205	4428596604	LOCK WAFER LW-1143-04P	WAFHW6P	2
CN503	4428595009	CON WAFER A2505WV2-09P	WAFMW9P	1
D501-504 D506-507	2058100996	DIODE RECTIFIER LT1N4006(4007)	1N 4006	6
C515 C528-529	3409210071-T	CAP AF RSG 10UF 50V 5 P	10/50	3
C531-532	3409210171-T	CAP AF RSG 100UF 50V 8 P	100/50	2
C516	3409247071-T	CAP AF RSG 47UF 50V 6 P	47/50	1
C514	3408210261	CAP RSG 1000UF 35V SNAP 16 P	1000/35	1
C526-527	3408247169	CAP AF SG 470UF 35V	470/35	2
C524-525	3409222171-T	CAP AF RSG 220UF 50V SG 10 P	220/50	2
C501-504(for M700)-	3419582279	CAP E LPW 8200UF 80V JAMICON	8200/80	4
C501-504(for M1000)	3409068298	CAP HM 6800UF 100V 40*60	6800/100	4
F501-503	4458999110	FUSE CLIP 5*20	FUSE CLIP	3
IC501	2128610900	IC KA7815 COMMON	7815	1
IC502	2128610800	IC MC7915 COMMON	7915	1
P51-53	4465998210	TERMINAL(250)PCB TAB	250T	3
P501	4355789207	CON ASSY RED	ASSY	1
P502-503	4355789306	CON ASSY 1P ORG	ASSY	2
P504	4355789403	CON ASSY 1P BLK	ASSY	1
R503	3009102973	RES CF 1K 1/5W J N	1K	1

R501	3009122973	RES CF 1.2K 1/5W J N	1.2K	1
R502	3009822973	RES CF 8.2K 1/5W J N	8.2K	1
PO501-502	2438200515	THERMISTOR POWER NTC 5D-15	TH5D-15	2
RY503	5528007200	RELAY 821-W-1A-C DC24V	821W-1A-C	1
Q501	2008606108-T	KTC3200-BL-AT	KTC 3220BL	1
Q502	2028407990	KTC4370A-Y-U	KTC4370A	1
Q503	2028406113	KTD2058-Y-U	D2058	1
AN102	4355824515	CON ASSY 5P	ASSY 5P	1
AN202	4355824511	CON ASSY 5P	ASSY 5P	1
AN403	4355797214	CON ASSY 3P	ASSY3P	1
CN501-502	4428595003	LW5267/LWB0640/2.5MM-03P	WAFMW3P	2
D505	2058502240	DIODE ZENER UZ-24BM(1N5252B)	UZ 24BM	1

M-700/100 INPUT B'D(4005187810)

C320 C370	3529103531-A	CAP CE F 10000PF 50V Z	10000P	2
C304-305 C354-355 C359	3529220311-A	CAP CE SL 22PF 50V J AXIAL	22P	5
C310	3529330311-A	CAP CE SL 33PF 50V J AXIAL	33P	1
C308 C358 C360	3529470311-A	CAP CE SL 47PF 50V J AXIAL	47P	3
C303 C353	3529050311-A	CAP CE SL 5P 50V C AXIAL	5P	2
COIL1-4	3908609980	EMI FILTER 2200PF	EMI FILTER 2200P	4
C307 C357	3409210071-T	CAP AF RSG 10UF 50V 5 P	10/50	2
C301-302 C306 C311 C351-352 C356	3409210141-T	CAP AF RSG 100UF 25V 6 P	100/25	7
C309	3409247071-T	CAP AF RSG 47UF 50V 6 P	47/50	1
IC301 IC303 IC305	2118010432	IC NJM2068DD JRC	NJM2068DD	3
JK301 JK303	4438090310	JACK COMBINATION CXLF-06L	COMBO	2
JK302 JK304	4408194310	XLR JACK (M) E503A0150N	XLR (M)	2
R307 R357 R370	3009101973	RES CF 100 1/5W J N	100	3
R308 R358	3009103973	RES CF 10K 1/5W J N	10K	2
R318	3009104973	RES CF 100K 1/5W J N	100K	1
R303-306 R309 R353-356 R359 R368-369	3009153973	RES CF 15K 1/5W J N	15K	12
R302 R352	3009105973	RES CF 1M 1/5W J N	1M	2
R312 R362	3009333973	RES CF 33K 1/5W J N	33K	2
R366-367	3009303973	RES CF 30K 1/5W J N	30K	2
R316-317	3009563973	RES CF 56K 1/5W J N	56K	2
R301 R351	3009823973	RES CF 82K 1/5W J N	82K	2
SW301	4618999910	SW SS65010-0203-9H-FN	SLIDE/2POLE	1
AN404	4355789717	CON ASSY 3P VR	ASSY3P	1
AN405	4355789721	CON ASSY 3P VR	ASSY3P	1
AN101	4355789806	CON ASSY 4P INPUT	ASSY4P	1
AN201	4355789811	CON ASSY 4P INPUT	ASSY4P	1

M-700/1000 VR B'D(4005187820)

D401-402 D451-452	2058304100	DIODE IN4148M	1N 4148	4
C403 C405 C453 C455	3409210071-T	CAP AF RSG 10UF 50V 5 P	10/50	4
C401-402 C451-452	3409247971-T	CAP AF RSG 4.7UF 50V 5 P	4.7/50	4
VR401-402	3228070100	VR RK16311E0Z0113B	10KB	2
LD401	2300050105	LED LTL-307E-041A LITEON	307E-041A	1
C404 C454	3609104120-T	CAP MA 0.1UF 100V J	0.1/100(M)	2
IC401	2118010332	IC NJM 5532DD JRC	NJM 5532DD	1
R421-422	3009472973	RES CF 4.7K 1/5W J N	4.7K	2
R402 R407 R452 R457	3009104973	RES CF 100K 1/5W J N	100K	1
R401 R404 R451 R454 R410 R409 R459-460	3009102973	RES CF 1K 1/5W J N	1K	8
R403 R406 R453 R456	3009222973	RES CF 2.2K 1/5W J N	2.2K	4
R408 R458	3009273973	RES CF 27K 1/5W J N	27K	2
R405 R455	3009331973	RES CF 330 1/5W J N	330	2
Q401-404 Q451-454	2008606104-T	TR NPN KTC3198-Y-AT TO-92	KTC 3198	8
CN401-402	4428595005	LW5267/LWB0640/2.5MM-05P	WAFMW5P	2
AN103 AN203	4355801007	CON ASSY 6P	ASSY 6P	2
CN403-405	4428595003	LW5267/LWB0640/2.5MM-03P	WAFMW3P	3
D403 D453	2058502150	DIODE ZENER UZ-15BM(1N5245B)	UZ 15BM	2

M-700/1000 CH1 LED B'D(4005187830)

AN401	4355824503	CON ASS'Y 5P	ASS'Y 5P	1
LD601-602	2300052105	LED LTL-307G-041A LITEON	307G-041A	2
LD603	2301053105	LED SLA-114L SHINYOUNG (ORG)	SLA-114L	1
LD604	2300050105	LED LTL-307E-041A LITEON	307E-041A	1
R601-606	3009392973	RES CF 3.9K 1/5W J N	3.9K	6
R607-610	3009472973	RES CF 4.7K 1/5W J N	4.7K	4

M-700/1000 CH2 LED B'D(4005187840)

AN402	4355824503	CON ASS'Y 5P	ASS'Y 5P	1
LD703	2300053105	LED LTL-307EA-041A LITEON	SLA-114L	1
LD704	2300050105	LED LTL-307E-041A LITEON	307E-041A	1
LD701-702	2300052105	LED LTL-307G-041A LITEON	307G-041A	2
R701-706	3009392973	RES CF 3.9K 1/5W J N	3.9K	6
R707-710	3009472973	RES CF 4.7K 1/5W J N	4.7K	4

M-700/1000 OUTPUT B'D(4005187850)

C805-806	3509103530-T	CAP CE F 0.01UF 50V Z	0.01/50	2
SP1-2	4438091710	JACK SPEAKON (PCB INSERT TYPE)	SPEAKON	2
C801-804	3609104120-T	CAP MA 0.1UF 100V J	0.1/100(M)	4
R801-804	3039100572-F	RES MO 10 2W J N	10 2W	4
SP3-4	4438190410	BINDING POST(2P)	BINDING POST(2P)	2
ANN105 ANN205	4428596604	LOCK WAFER LW-1143-04P	WAFHW4P	2

M-700/1000 ASS'Y B'D

INLET1	4448997410	AC INLET 6100.4315 250T SCURTE	AC INLET	1
BD100(for M700)	2058100103	DIODE KBPC-2504 LUG TYPE	KBPC 2054	1
BD100(for M1000)	2058100998	DIODE KBPC3504	KBPC 3054	
C100	3549472407	CAP DE2E3KH472MA4B	0.0047/400	1
FAN1-2(for M700)	7308999010	FAN F8025*24B MA-430/830	FAN1	2
FAN1-2(for M1000)	7308999013	FAN (F8025X24B-FS)	FAN1	2
F101(for M700)	5568223633	CIRCUIT BREAKER W28-XQ1A-7A	CIRCUIT BREAKER	1
F101(for M1000)	5568224533	CIRCUIT BREAKER W28-XQ1A-10A	CIRCUIT BREAKER	1
SW101	4625996611	SW POWER(C1350AT) ARCOLECTRIC	POWER SWITCH	1
CON ASS'Y	4355789510	CON ASS'Y 6P POWER	CON ASS'Y 6P POWER	1
CON ASS'Y	4355915905	SOCKET TERMINAL BROWN	SOCKET TERMINAL BROWN	1
CON ASS'Y	4355810803	GND TERMINAL ASS'Y (REF-2300)	GND TERMINAL ASS'Y (REF-2300)	1
F1	5508412239	FUSE#218T 20MM 1A/250V UCSKJ	FUSE 20MM	1
PT1(for M700)	2828067121 2828067131 2828067141 2828067111 2828067131	TRANS POWER 220V M-700 TRANS POWER 230V M-700 TRANS POWER 240V M-700 TRANS POWER 120V S-700/M-700 TRANS POWER 230V M-700	C D E R	
PT1(for M1000)	2828067021 2828057031 2828067041 2828067011 2828067001 2828067031	TRANS POWER 220V M-1000 TRANS POWER 230V M-1000 TRANS POWER 240V M-1000 TRANS POWER 120V S-1000 TRANS POWER 100V S-1000 TRANS POWER 230V M-1000	C D E J R	
AC CORD(for M700)	4308997310 4308996710 4308998000 4308997710 4308999410	AC CORD DOME 3-CORES AC CORD (WITHOUT PLUG) AC CORD POWER FOR SAA CORD AC(UL3 125V 13A)MODEL7000 AC CORD V+VII6A-250VHOVV-F3G	C D E R	
AC CORD(for M1000)	4308991810 4308996710 4308998000 4308997710 4308990810	AC CORD DOM 10A INLET AC CORD (WITHOUT PLUG) AC CORD POWER FOR SAA CORD AC(UL3 125V 13A)MODEL7000 AC POWER CORD JIS	C D E J	
AN502			ASS'Y3P	1