

fp-1402

PowerPlant

SERVICE MANUAL

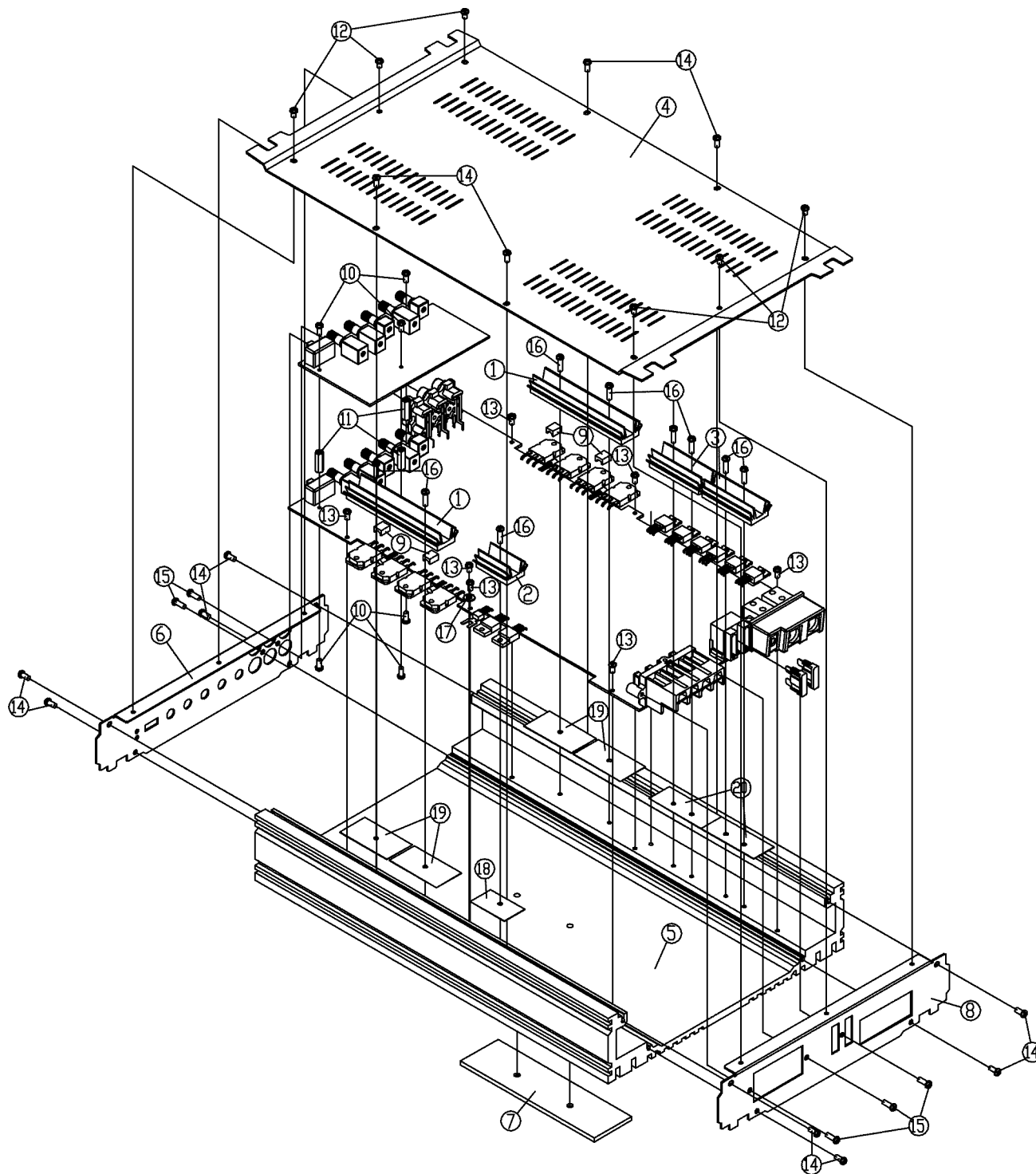


FUSION®

fp-series

PowerPlant

EXPLODED VIEW



Exploded View Parts List				
NO.	NAME	STAN	QUTY	CODE
1	BKTS 2184	AL 85X16	2	G-BKTS-2184-1
2	BKTS 2202	AL 29X16	1	G-BKTS-2202-1
3	BKTS 2203	AL 46X16	2	G-BKTS-2203-1
4	BOCA CBCP330-01	EG11.2t 330X212	1	G-CBA-CBCP330
5	HSM HSPP004-01	PP-330mm	1	G-HSM-HSPP004
6	PFA PFPP002-01	EG11.0t 216X45.5	1	G-PFA-PFPP002
7	BADGE	FUSION-LOGO	1	G-PLA-FUSION1
8	PRA PRPP004-01	EG11.0t 216X45.5	1	G-PRA-PRPP004
9	SILICON RUBBER	6.4X4.3X8.0 BK	4	G-RUBS-4075-1
10	SCREW MACHINE	PH/M3X6 BK	6	G-SMPH003061
11	MAIN SPACER	HEX 5X15mm	3	G-SPC-515-1
12	SCREW TAPPING	PH3/T3X4 C BK	6	G-STPH303041C
13	SCREW TAPPING	PH3/T3X5 BK	8	G-STPH303051
14	SCREW TAPPING	PH3/T3X6 BK	12	G-STPH303061
15	SCREW TAPPING	PH3/T3X8 BK	5	G-STPH303081
16	SCREW TAPPING	PH3/T3X12 BK	9	G-STPH303121
17	WASHER PLATE	Ø3.2X8.0X1.0 ZN	1	G-SWWP3280101
18	SILICON RUBBER 19X32P	INS-2202	1	H-RUBS-32P-1
19	SILICON RUBBER 23.5X44P	INS-2182	4	H-RUBS-44P-2
20	SILICON RUBBER 19X49P	INS-2203	2	H-RUBS-49P-1

PART LIST

NO	CODE	NAME	STAN	Q'TY	REMARK
1	B-FLUX-----1	FLUX NT2016	@50000	1.000	
2	B-IPA-----1	IPA 2070	15kg:@28,000 g	1.000	
3	B-SLDR-BAR--1	SOLDER BAR 60%	kg:\$4.7 g:\$0.0047	1.000	
4	B-SLDR-WIRE-1	SOLDER WIRE 60%	kg:\$4.2 g:\$0.0042	1.000	
5	B-TUB-EMP1--1	TUBE EMPIRE	1mm/0.05ø @20	1.000	TH1, Q107, Q207
6	H-CER-100CHT1	CER CAP 100PF CH	TP TYPE	4.000	C144, C145, C244, C245
7	H-CER-104T--1	CER CAP 104PF	TP TYPE	1.000	C1
8	H-CER-10CHT-1	CER CAP 10PF CH	TP TYPE	5.000	C102, C150, C202, C205, C250
9	H-CER-560T--1	CER CAP 560PF	TP TYPE	1.000	C242
10	H-CER-56CHT-1	CER CAP 56PF CH	TP TYPE	1.000	C105
11	H-CER-680T--1	CER CAP 680PF	TP TYPE	3.000	C103, C142, C203
12	H-COPER-2--3	COPER 2P NI	30mm	6.000	CO4, CO5, CO6, CO7, CO8, CO14
13	H-COPER-2--4	COPER 2P NI	45mm	6.000	CO2, CO9, CO10, CO11, CO12
14	H-COPER-2--4	COPER 2P NI	45mm	0.000	CO13
15	H-COPER-2--5	COPER 2P NI	60mm	2.000	CO1, CO3
16	H-DIO-25C---2	DIODE YG225C2		2.000	D8, D8A
17	H-DIO-25N---2	DIODE YG225N2		2.000	D7, D7A
18	H-DIO-4002--1	DIODE IN4002		1.000	D6
19	H-DIO-4148--1	DIODE IN4148M		10.000	D1, D2, D4, D11, D50, D51, D101
20	H-DIO-4148--1	DIODE IN4148M		0.000	D201, D501, D502
21	H-DIO-6A10--1	DIODE 6A10		1.000	D3
22	H-DIZ-1W15V-1	DIODE ZENER TZP15B	1N4744	2.000	DZ2, DZ3
23	H-DIZ-5.6B--1	DIODE ZENER MTZ5.6B		1.000	DZ4
24	H-DIZ-7.5B--1	DIODE ZENER MTZ7.5B		1.000	ZD1
25	H-E100-16SHT1	EC 100/16 5X11 SHL	TP TYPE	1.000	C508

PART LIST

NO	CODE	NAME	STAN	Q'TY	REMARK
26	H-E10-25SHT-1	EC 10/25 5X11 SHL	TP TYPE	6.000	C113, C116, C213, C216, R148, R248
27	H-E10-50SHT-1	EC 10/50 5X11 SHL	TP TYPE	2.000	C15, C502
28	H-E13-25SX--2	EC1000/25 12.5X25 SXE		6.000	C3, C4, C30, C31, C32, C33
29	H-E1-50SHT--1	EC 1/50 5X11 SHL	TP TYPE	3.000	C14, C23, C28
30	H-E220-25SHT1	EC 220/25 8X11.5 SHL	TP TYPE	2.000	C10, C11
31	H-E330-16SHT1	EC 330/16 8X11.5 SHL	TP TYPE	3.000	C2, C19, C24
32	H-E33-25SHT-1	EC 33/25 5X11 SHL	TP TYPE	2.000	C143, C243
33	H-E333-50SM-1	EC3300/50 25.4X25 SMH		4.000	C8, C9, C40, C41
34	H-E4.7-50SHT1	EC 4.7/50 5X11 SHL	TP TYPE	6.000	C101, C104, C141, C201, C204
35	H-E4.7-50SHT1	EC 4.7/50 5X11 SHL	TP TYPE	0.000	C241
36	H-FUS-20A---1	FUSE ATC-20A		3.000	FUSE1, FUSE2, FUSE3
37	H-FUS-HOL3-31	FUSE HOLDER P3	DKT-08011 PCB-INSERT	3.000	FUSE1, FUSE2, FUSE3
38	H-IC-13700D-1	IC NJM13700D DIP		1.000	U6
39	H-IC-358P---1	IC KIA358P		1.000	IC302
40	H-IC-4560L--1	IC NJM4560L SIP		6.000	U1, U2, U3, U4, U5, U7
41	H-IC-494CN--1	IC TL494CN		1.000	IC301
42	H-JAK-MODUL-1	MODULAR JACK 4P	616PCB4D	1.000	CON1
43	H-JAK-R4PG--8	JACK RCA DKJ44104	UP:RED / DOWN:WHITE	1.000	RCA1
44	H-JW-JUMPW06T	JUMP WIRE 0.6T	TP TYPE	138.000	
45	H-LED-HOLDER6	HOLDER LED ASS'Y	LT031HR1GH202C17(G/R)	1.000	LED
46	H-MFB-103P5T1	CAP/M-FILM 103/63V	BOX FILM 103 TP TYPE	6.000	C5, C6, C12, C18, C21, C501
47	H-MFB-104P5T1	CAP/M-FILM 104/63V	BOX FILM 104 TP TYPE	14.000	C13, C17, C20, C39, C99, C108
48	H-MFB-104P5T1	CAP/M-FILM 104/63V	BOX FILM 104 TP TYPE	0.000	C115, C146, C147, C208, C215
49	H-MFB-104P5T1	CAP/M-FILM 104/63V	BOX FILM 104 TP TYPE	0.000	C246, C247, CP1
50	H-MFB-153P5T1	CAP/M-FILM 153/63V	BOX FILM 153 TP TYPE	4.000	C119, C120, C219, C220

PART LIST

NO	CODE	NAME	STAN	Q'TY	REMARK
51	H-MFB-184P5T1	CAP/M-FILM 184/63V	BOX FILM 184 TP TYPE	4.000	C111, C112, C211, C212
52	H-MFB-224P5T1	CAP/M-FILM 224/63V	BOX FILM 224 TP TYPE	2.000	C117, C217
53	H-MFB-473P5T1	CAP/M-FILM 473/63V	BOX FILM 473 TP TYPE	4.000	C106, C107, C206, C207
54	H-MFB-563P5T1	CAP/M-FILM 563/63V	BOX FILM 563 TP TYPE	2.000	C109, C209
55	H-MFB-683P5T1	CAP/M-FILM 683/63V	BOX FILM 683 TP TYPE	2.000	C118, C218
56	H-MOS-44----4	MOSFET FQP50N06	N-CH TO220	10.000	Q23, Q24, Q25, Q26, Q27, Q28
57	H-MOS-44----4	MOSFET FQP50N06	N-CH TO220	0.000	Q29, Q30, Q31, Q32
58	H-MYR-222T--2	MYLAR 222 (0.0022/50)	TP TYPE "J"	3.000	C7, C114, C214
59	H-MYR-472T--2	MYLAR 472 (0.0047/50)	TP TYPE "J"	1.000	C22
60	H-PBA-9150PP1	MAIN PCB PP9150MA	378X160X1.6t XPC	1.000	
61	H-PBS-9150PP1	SPEAKER PCB PP9150SP	163.5X28X16.5 XPC	1.000	
62	H-PBS-9502PP1	REMOTE PCB FP2-250XSW	204X84X1.6t XPC (1/10)	1.000	
63	H-PIN-16PS--5	PIN HEADER 2X8(16P)	SMRH-254D16T (L=3.5)	2.000	CN1, CN4
64	H-PTRC-5-23-1	RFC COIL TOROIDE	5UH 23mm 8T	1.000	L1
65	H-PTTO-49--33	P.T TOROIDE 49mm	UT2150 5T/15T	1.000	T1
66	H-R12-220---1	RESISTOR 1/2W 220		2.000	R157, R257
67	H-R14-13----1	RESISTOR 1/4W 1K		3.000	R3, R4, R99
68	H-R14-47----1	RESISTOR 1/4W 47		10.000	R5, R6, R7, R8, R9, R10, R11
69	H-R14-47----1	RESISTOR 1/4W 47		0.000	R12, R13, R14
70	H-R18-100---1	RESISTOR 1/8W 100		8.000	R143, R144, R145, R146, R243
71	H-R18-100---1	RESISTOR 1/8W 100		0.000	R244, R245, R246
72	H-R18-1003--1	RESISTOR 1/8W 100K		10.000	R36, R41, R113, R130, R135
73	H-R18-1003--1	RESISTOR 1/8W 100K		0.000	R213, R230, R235, R501, R502
74	H-R18-103---1	RESISTOR 1/8W 10K		17.000	R25, R26, R28, R29, R30, R31
75	H-R18-103---1	RESISTOR 1/8W 10K		0.000	R37, R103, R104, R108, R142

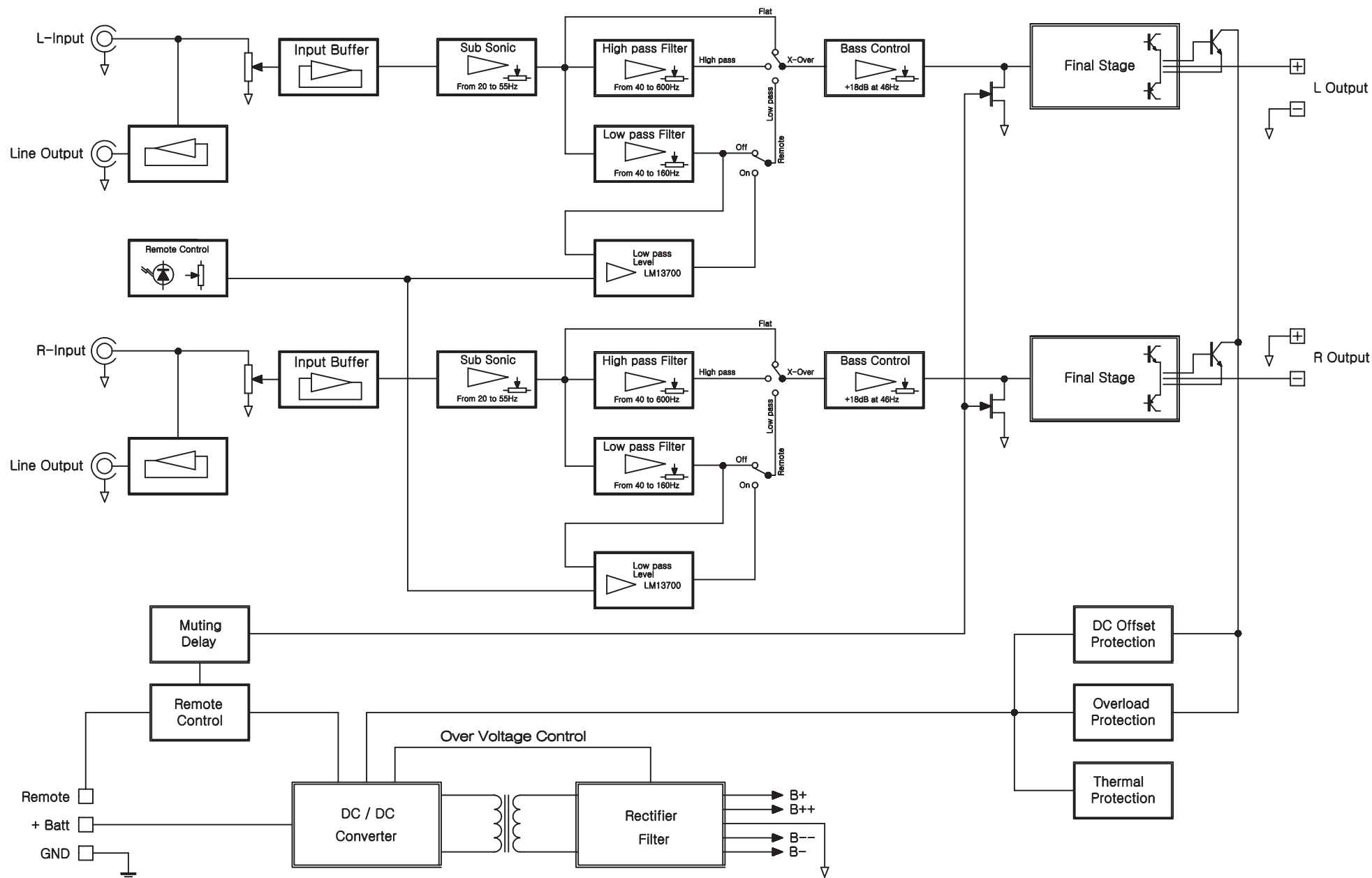
PART LIST

NO	CODE	NAME	STAN	Q'TY	REMARK
76	H-R18-103---1	RESISTOR 1/8W 10K		0.000	R203, R204, R208, R242
77	H-R18-103---1	RESISTOR 1/8W 10K		0.000	RX101, RX201
78	H-R18-112---1	RESISTOR 1/8W 1.1K		1.000	R110
79	H-R18-113---1	RESISTOR 1/8W 11K		2.000	R119, R219
80	H-R18-123---1	RESISTOR 1/8W 12K		4.000	R115, R117, R215, R217
81	H-R18-13----1	RESISTOR 1/8W 1K		21.000	R1, R2, R42, R51, R52, R101
82	H-R18-13----1	RESISTOR 1/8W 1K		0.000	R102, R123, R126, R149, R150
83	H-R18-13----1	RESISTOR 1/8W 1K		0.000	R154, R201, R202, R223, R226
84	H-R18-13----1	RESISTOR 1/8W 1K		0.000	R249, R250, R254, RL1, RL2
85	H-R18-1503--1	RESISTOR 1/8W 150K		4.000	R132, R133, R232, R234
86	H-R18-153---1	RESISTOR 1/8W 15K		2.000	R166, R266
87	H-R18-16----1	RESISTOR 1/8W 1M		1.000	R35
88	H-R18-183---1	RESISTOR 1/8W 18K		1.000	R32
89	H-R18-203---1	RESISTOR 1/8W 20K		2.000	R153, R253
90	H-R18-223---1	RESISTOR 1/8W 22K		8.000	R106, R121, R131, R167, R206
91	H-R18-223---1	RESISTOR 1/8W 22K		0.000	R221, R231, R267
92	H-R18-224---1	RESISTOR 1/8W 2.2K		8.000	R33, R34, R141, R164, R241
93	H-R18-224---1	RESISTOR 1/8W 2.2K		0.000	R264, R156, R256
94	H-R18-243---1	RESISTOR 1/8W 24K		2.000	R122, R222
95	H-R18-273---1	RESISTOR 1/8W 27K		3.000	R124, R224, R507
96	H-R18-33----1	RESISTOR 1/8W 3K		1.000	R38
97	H-R18-333---1	RESISTOR 1/8W 33K		4.000	R39, R40, R53, R54
98	H-R18-393---1	RESISTOR 1/8W 39K		1.000	R506
99	H-R18-432---1	RESISTOR 1/8W 4.3K		2.000	R112, R212
100	H-R18-4703--1	RESISTOR 1/8W 470K		1.000	R505

PART LIST

NO	CODE	NAME	STAN	Q'TY	REMARK
101	H-R18-47----1	RESISTOR 1/8W 47		4.000	R151, R152, R251, R252
102	H-R18-473---1	RESISTOR 1/8W 47K		8.000	R105, R120, R125, R128, R205
103	H-R18-473---1	RESISTOR 1/8W 47K		0.000	R220, R225, R228
104	H-R18-474---1	RESISTOR 1/8W 4.7K		5.000	R27, R134, R155, R233, R255
105	H-R18-680---1	RESISTOR 1/8W 680		4.000	R162, R163, R262, R263
106	H-R18-683---1	RESISTOR 1/8W 68K		2.000	R127, R227
107	H-R18-750---1	RESISTOR 1/8W 750		2.000	R107, R207
108	H-R18-824---1	RESISTOR 1/8W 8.2K		8.000	R114, R140, R147, R148, R214
109	H-R18-824---1	RESISTOR 1/8W 8.2K		0.000	R240, R247, R248
110	H-R18-913---1	RESISTOR 1/8W 91K		1.000	R211
111	H-R18-914---1	RESISTOR 1/8W 9.1K		1.000	R111
112	H-R1WM-22---2	RESISTOR 1W 22	M TYPE	1.000	R22
113	H-R1WM-27---2	RESISTOR 1W 27	M TYPE	2.000	R20, R21
114	H-R2WM-472--2	RESISTOR 2W 4.7	M TYPE	2.000	R165, R265
115	H-R3WM-470--2	RESISTOR 3W 470	M TYPE	2.000	R23, R24
116	H-R5WM-015--3	RESISTOR MPR 5W 0.15	2P ROUND 16X8X18	8.000	R158, R159, R160, R161
117	H-R5WM-015--3	RESISTOR MPR 5W 0.15	2P ROUND 16X8X18	0.000	R258, R259, R260, R261
118	H-STRG-3PG-13	TERMINAL SCREW	DKPT03300 3P GOLD	1.000	TER2
119	H-STRG-4PG--8	TERMINAL SCREW	DK041124	1.000	TER1
120	H-SWS-2203--1	SW SL SK22J03G6	2C2P 6mm	1.000	SW2
121	H-SWS-2301--3	SW SL SK23E01G6	2C3P 6mm	1.000	SW1
122	H-THM-150K--2	THERMISTOR 150K	"LUG"	1.000	TH1
123	H-TR-1023YT-1	TR KTA1023Y	TP TYPE	3.000	Q16, Q105, Q205
124	H-TR-1027YT-1	TR KTC1027Y	TP TYPE	2.000	Q106, Q206
125	H-TR-1266GT-1	TR KTA1266GR	TP TYPE	1.000	Q17

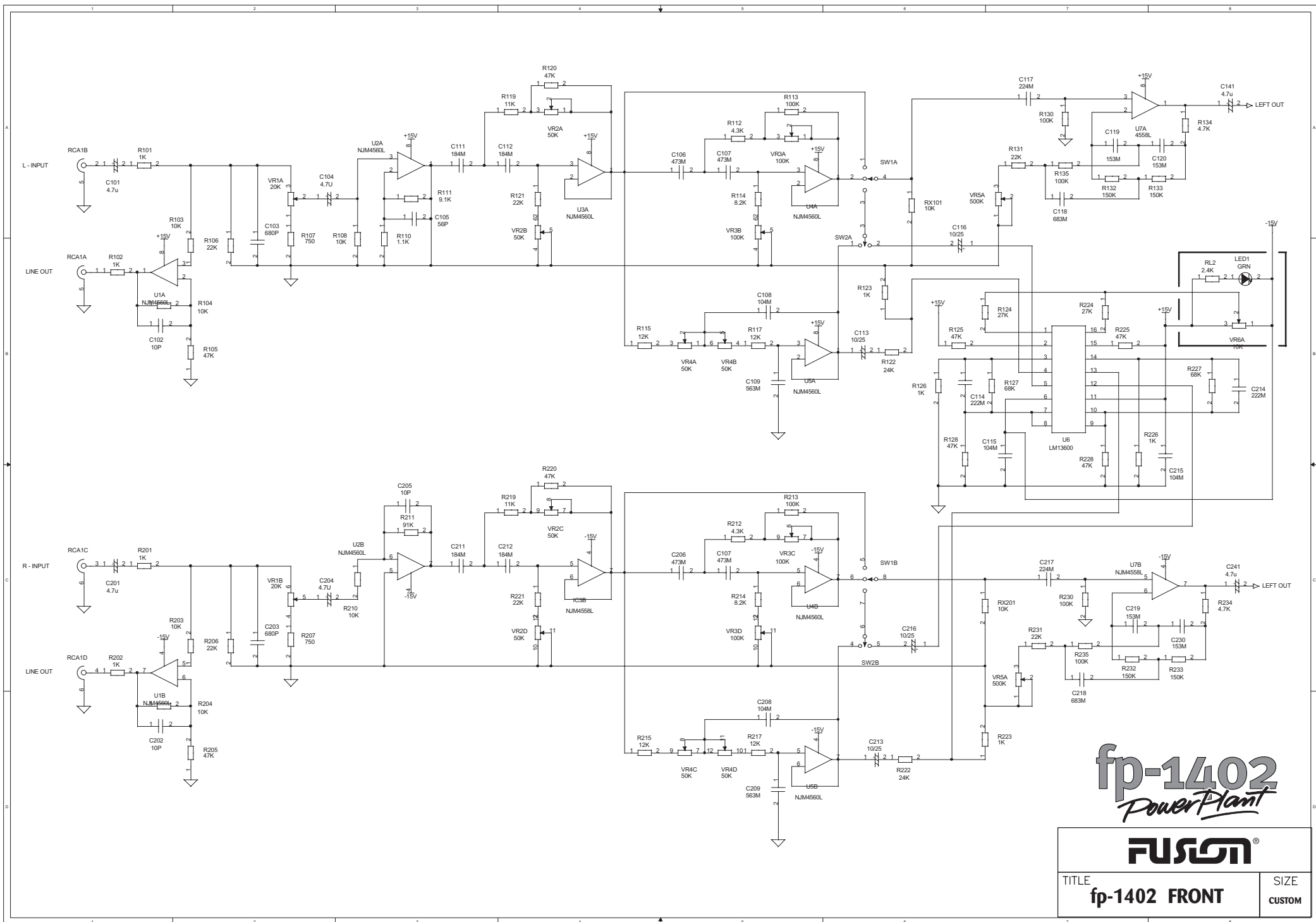
[illegible]



fp-1402
PowerPlant

FUSION®

TITLE
fp-1402 BLOCK DIAGRAM

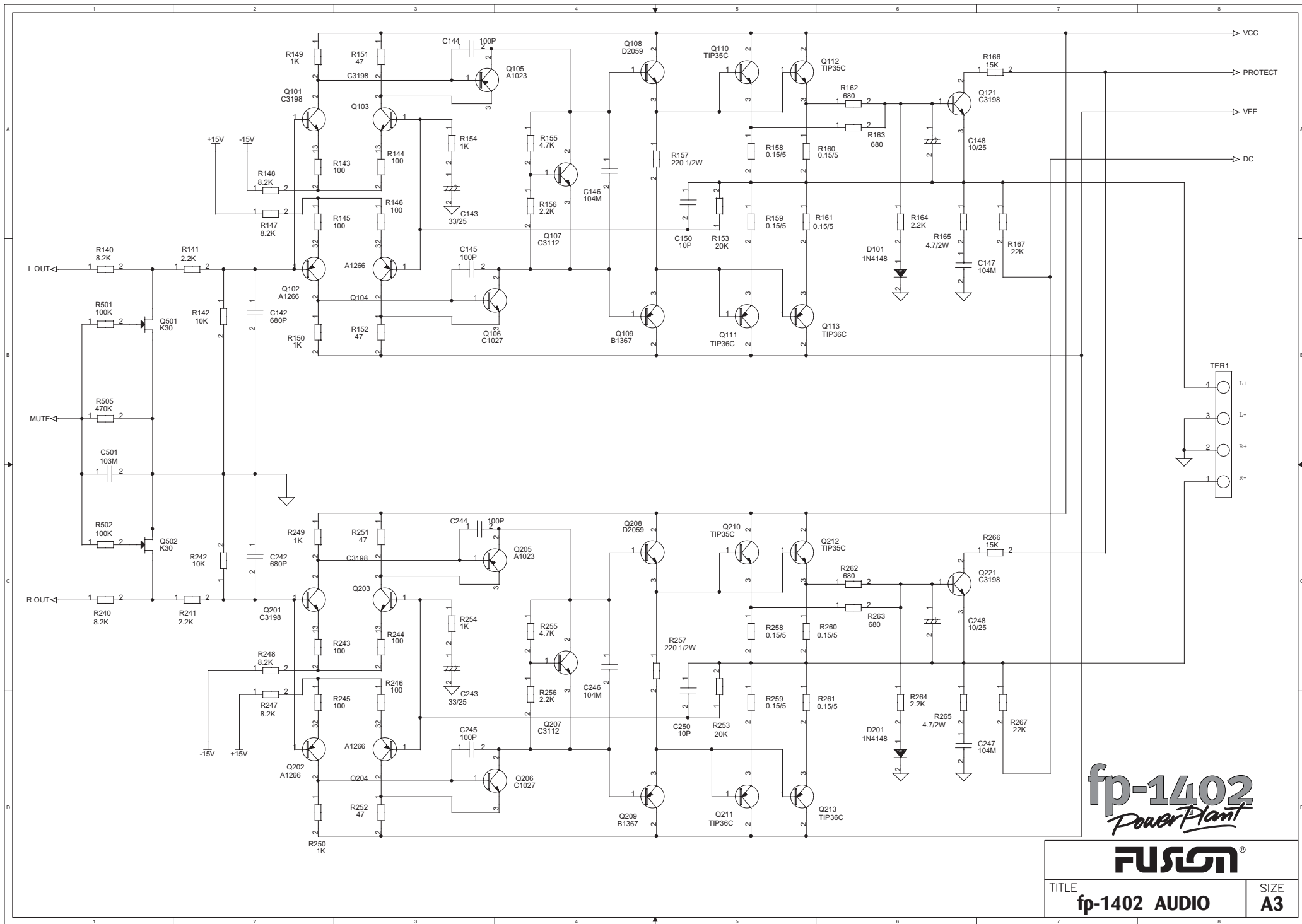


fp-1402
PowerPlant

FUSION®

TITLE
fp-1402 FRONT

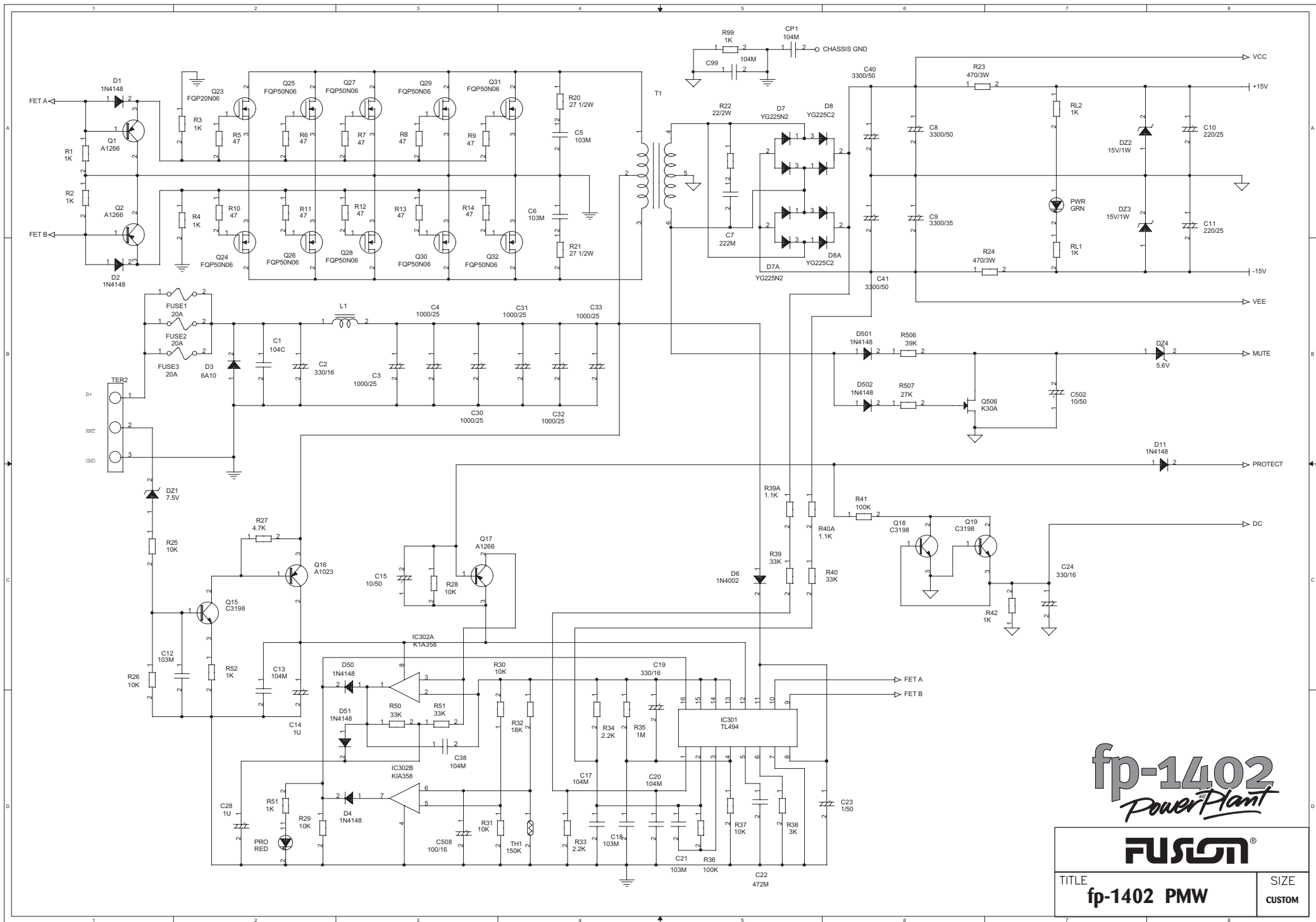
SIZE
CUSTOM



fp-1402
PowerPlant

FUSION

TITLE fp-1402 AUDIO		SIZE A3
-------------------------------	--	-------------------



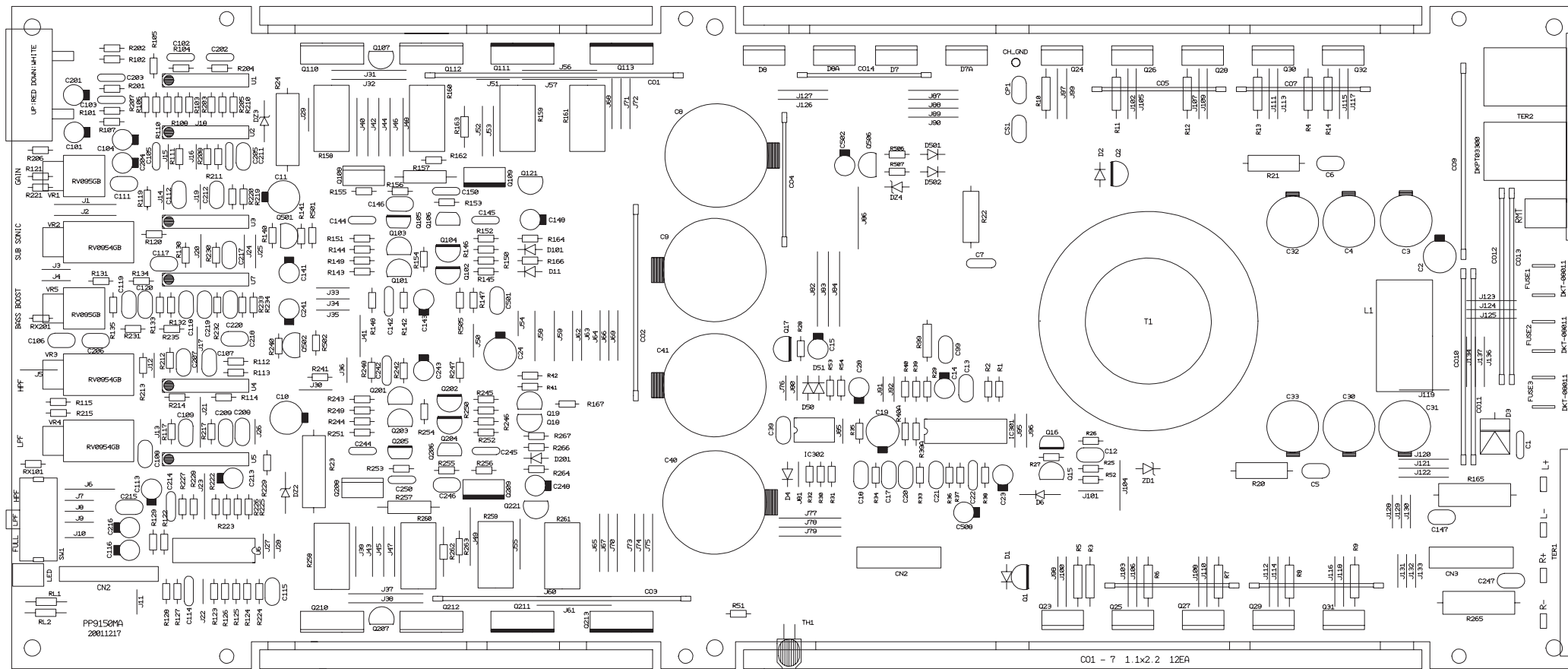
fp-1402
PowerPlant

FUSON

TITLE
fp-1402 PMW

SIZE
CUSTOM

fp-1402
PowerPlant



FUSION®

TITLE

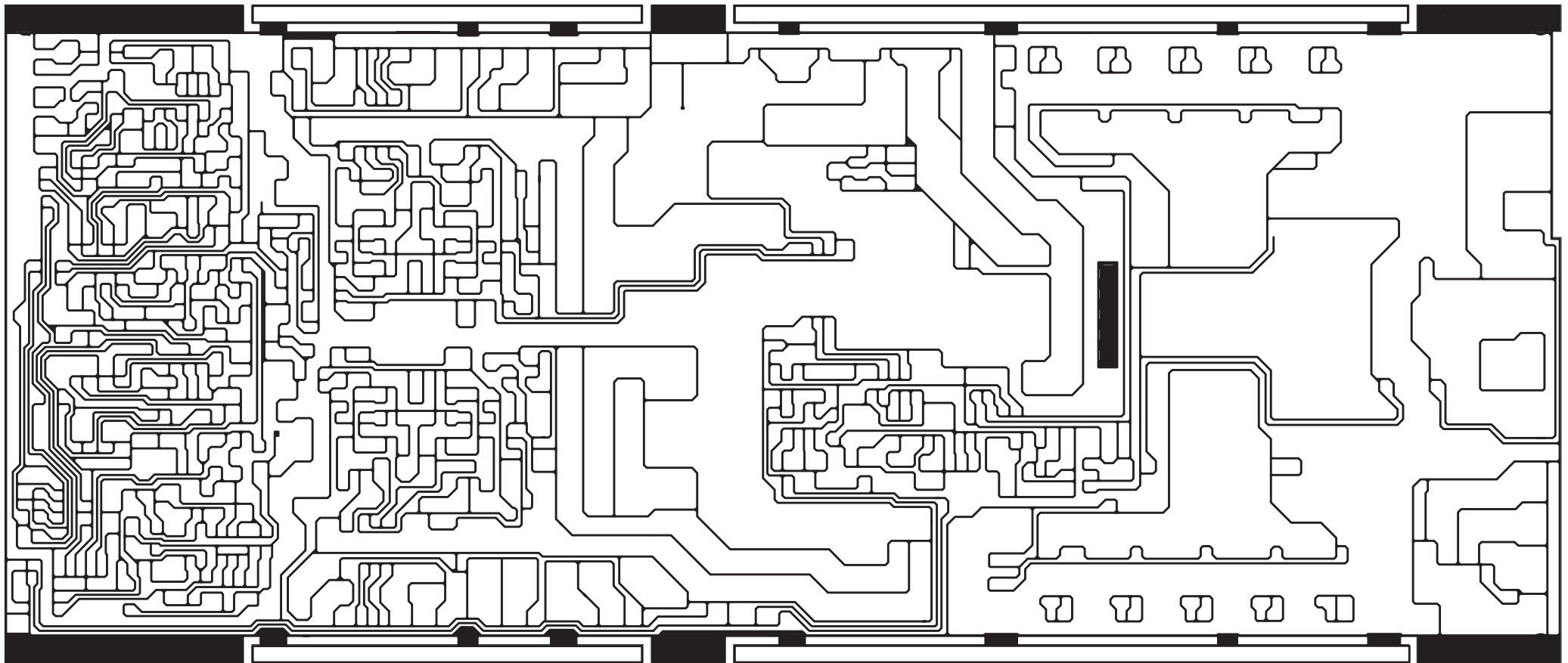
fp-1402 PCB BOARD

SIZE

A3

fp-1402

PowerPlant



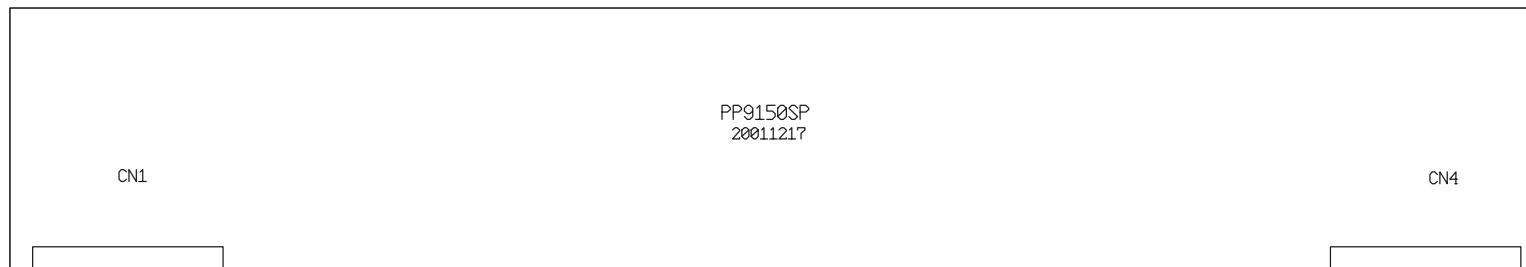
FUSION[®]

TITLE
fp-1402 PCB BOARD

SIZE
A3

fp-1402

PowerPlant

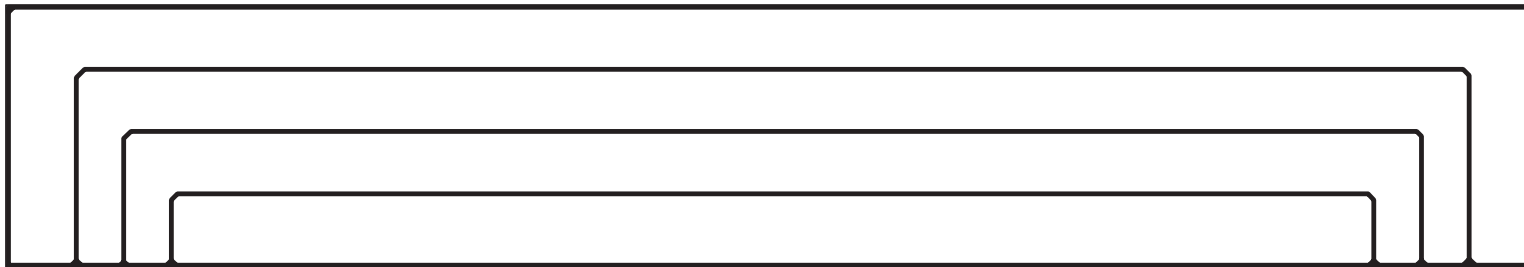


FUSION[®]

TITLE
fp-1402 PCB BOARD-SP

SIZE
A3

fp-1402
PowerPlant



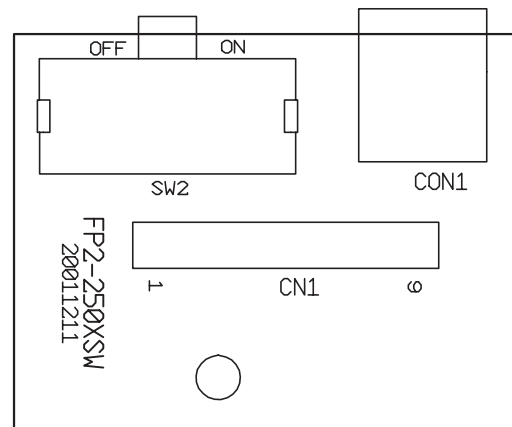
FUSION[®]

TITLE
fp-1402 PCB BOARD-SP

SIZE
A3

fp-1402

PowerPlant

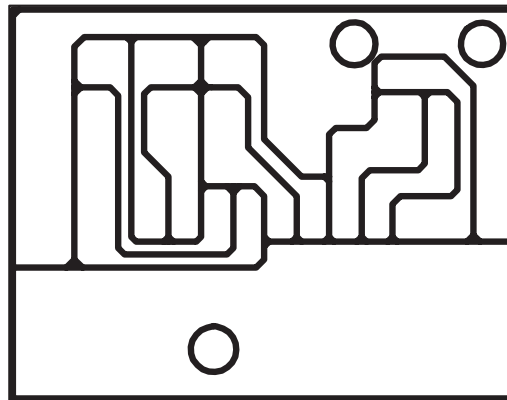


FUSION[®]

TITLE
fp-BASS PCB BOARD-RMT

SIZE
A4

fp-1402
PowerPlant



FUSION[®]

TITLE

fp-BASS PCB BOARD-RMT

SIZE

A4