

Service Manual

ORDER NO.
RRV3107

DJ MIXER

DJM-500

THIS MANUAL IS APPLICABLE TO THE FOLLOWING MODEL(S) AND TYPE(S).

Type	Model	Power Requirement	The voltage can be converted by the following method.
	DJM-500		
RELM4	○	AC110-120V/220-240V	With the voltage selector

● **This service manual should be used together with the following manual(s):**

Model No.	Order No.	Remarks
DJM-500/RELM	RRV1405	

1. CONTRAST OF MISCELLANEOUS PARTS

NOTES: ● Parts marked by "NSP" are generally unavailable because they are not in our Master Spare Parts List.

● The Δ mark found on some component parts indicates the importance of the safety factor of the part. Therefore, when replacing, be sure to use parts of identical designation.

● Screws adjacent to ∇ mark on product are used for disassembly.

● Reference Nos. indicate the pages and Nos. in the service manual for the base model.

● When ordering resistors, first convert resistance values into code form as shown in the following examples.

Ex.1 When there are 2 effective digits (any digit apart from 0), such as 560 ohm and 47k ohm (tolerance is shown by J=5%, and K=10%).

560 \rightarrow $56 \times 10^1 \rightarrow$ 561 RD1/4PU $\boxed{5}\boxed{6}\boxed{1}J$

47k \rightarrow $47 \times 10^3 \rightarrow$ 473 RD1/4PU $\boxed{4}\boxed{7}\boxed{3}J$

0.5 \rightarrow R50 RN2H $\boxed{R}\boxed{5}\boxed{0}K$

1 \rightarrow 1R0 RS1P $\boxed{1}\boxed{R}\boxed{0}K$

Ex.2 When there are 3 effective digits (such as in high precision metal film resistors).

5.62k \rightarrow $562 \times 10^1 \rightarrow$ 5621 RN1/4PC $\boxed{5}\boxed{6}\boxed{2}\boxed{1}F$

■ CONTRAST TABLE

DJM-500/RELM4 and DJM-500/RELM are constructed the same except for the following :

Ref. No.	Mark	Symbol and Description	Part No.		Remarks
			DJM-500/ RELM	DJM-500/ RELM4	
P 4 - 8	NSP	PCB ASSEMBLIES DSP ASSY └ TERMINAL ASSY	DWX1786 DWZ1076	DWX2464 DWZ1148	For Accessories
P4 - 10	NSP	VR Assy	DWM2057	DWM2210	
P4 - 11	NSP	└ PHONE JACK ASSY	DWZ1057	DWZ1144	
	NSP	└ MIC JACK ASSY	DWZ1066	DWZ1145	
P4 - 20	NSP	SUB Assy	DWM2058	DWM2211	
P4 - 21	NSP	└ BAL.OUT ASSY	DWZ1059	DWZ1147	
		└ PHONE ASSY	DWZ1077	DWZ1146	
P3 - 8		PACKING Polyethylene Bag (0.03 x 230 x 340)	Z21-038	Not used	
P3 - 8		Polyethylene Bag (0.06 x 230 x 340)	Not used	AHG7117	
		IEC 65-6 Caution	Not used	ARM7067	
P4 - 35		EXTERIOR Label	DRW1739	DRW2268	
P4 - 57		Display Panel A	DAH2095	DAH2177	
P4 - 59		Display Panel B	DAH2096	DAH2178	
P4 - 116	NSP	Cord Clamper	RNE-513	Not used	

● For PCB ASSEMBLIES, Refer to "CONTRAST OF PCB ASSEMBLIES".

■ CONTRAST OF PCB ASSEMBLIES

• TERMINAL Assy

DWZ1076 and DWZ1148 are constructed the same except for the following :

Mark	Symbol and Description	Part No.		Remarks
		DWZ1076	DWZ1148	
	R878 - R883 C867, C869, C875, C877, C879, C881 C868, C870, C876, C878, C880, C882 L901 - L906	RD1/4PU101J CCCSL101J50 CCCSL101J50 Not used	RD1/4PU332J Not used CQMA221J50 LAU221J	*1

*1 : Refer to “ 2. SCHEMATIC DIAGRAM and 3. PCB CONNECTION DIAGRAM”.

• PHONE Assy

DWZ1077 and DWZ1146 are constructed the same except for the following :

Mark	Symbol and Description	Part No.		Remarks
		DWZ1077	DWZ1146	
	C602, C621, C622, C646 C1101 - C1104 C1105 - C1110	CCCSL101J50 Not used Not used	CQMA102J50 CCPUSL470J50 CCPUSL560J50	*4 *4

*4 : Refer to “ 2. SCHEMATIC DIAGRAM and 3. PCB CONNECTION DIAGRAM”.

• PHONE JACK Assy

DWZ1057 and DWZ1144 are constructed the same except for the following :

Mark	Symbol and Description	Part No.		Remarks
		DWZ1057	DWZ1144	
	C1003, C1004	Not used	CKSRYB104K25	*2

*2 : Refer to “ 2. SCHEMATIC DIAGRAM and 3. PCB CONNECTION DIAGRAM”.

• MIC JACK Assy

DWZ1066 and DWZ1145 are constructed the same except for the following :

Mark	Symbol and Description	Part No.		Remarks
		DWZ1066	DWZ1145	
	C1005	Not used	CCSRCH221J50	*3

*3 : Refer to “ 2. SCHEMATIC DIAGRAM and 3. PCB CONNECTION DIAGRAM”.

• BAL.OUT Assy

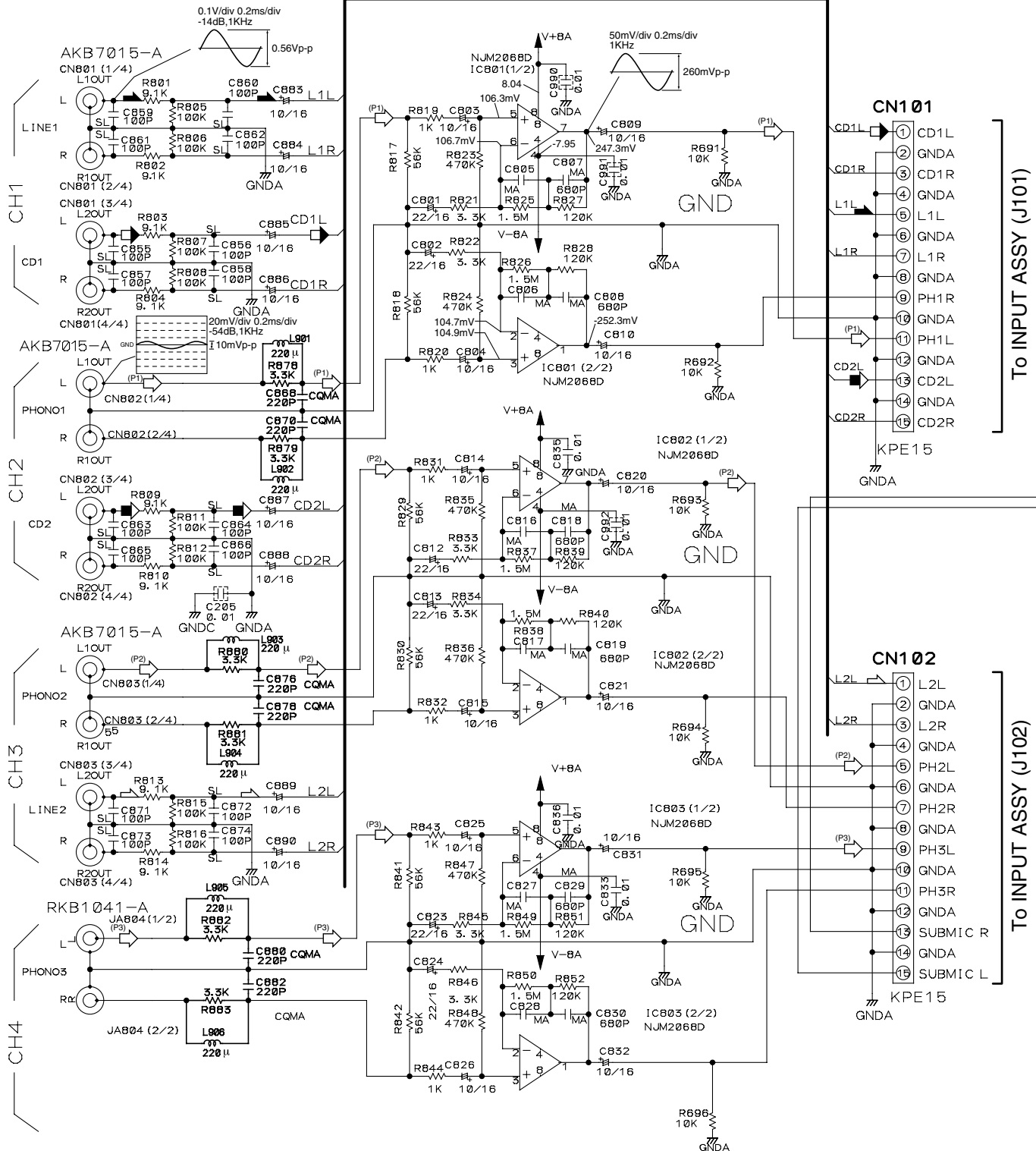
Although DWZ1059 and DWZ1147 are different in part number, they consist of the same components.

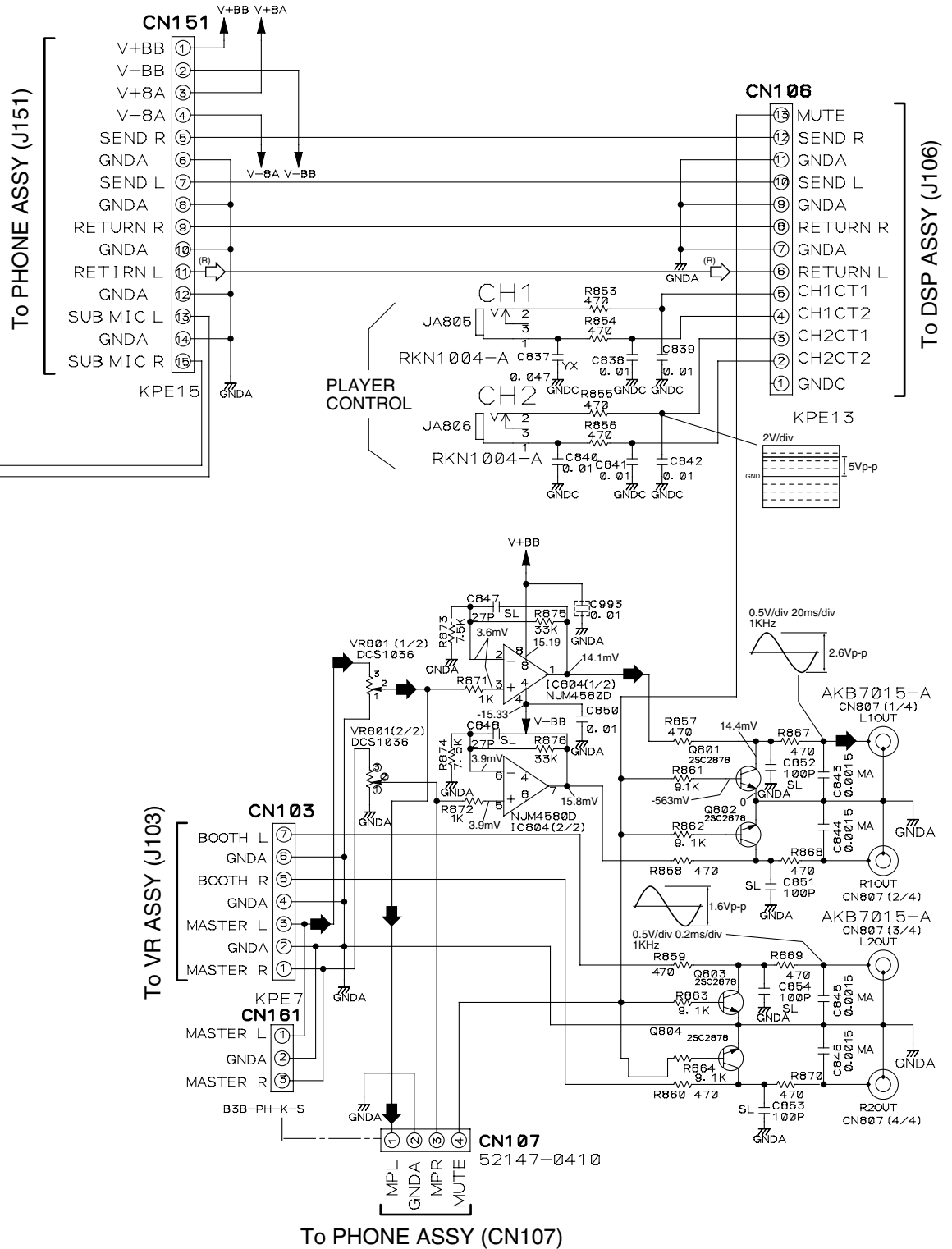
2. SCHEMATIC DIAGRAM

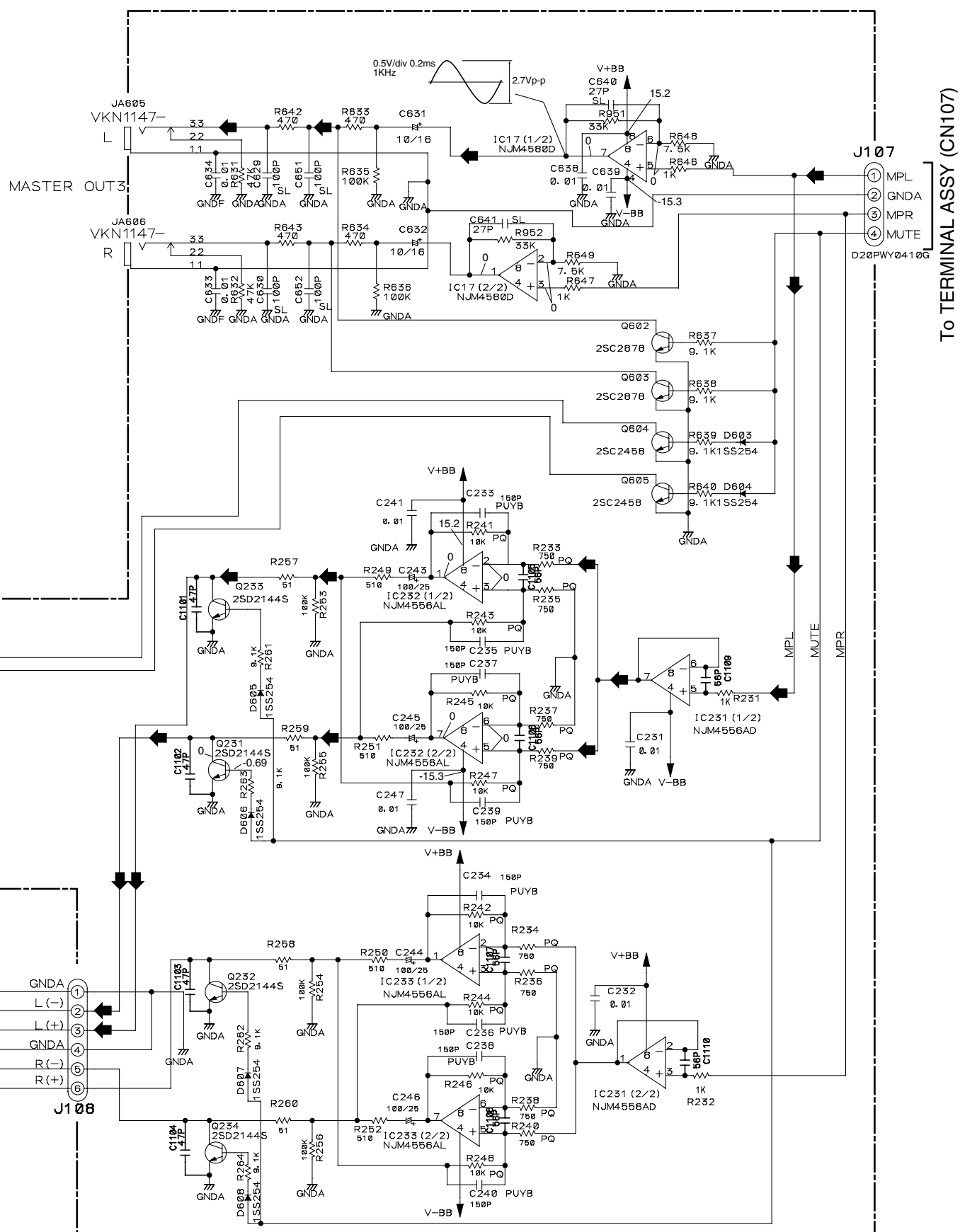
2.1 TERMINAL ASSY

TERMINAL ASSY (DWZ1148)

EA



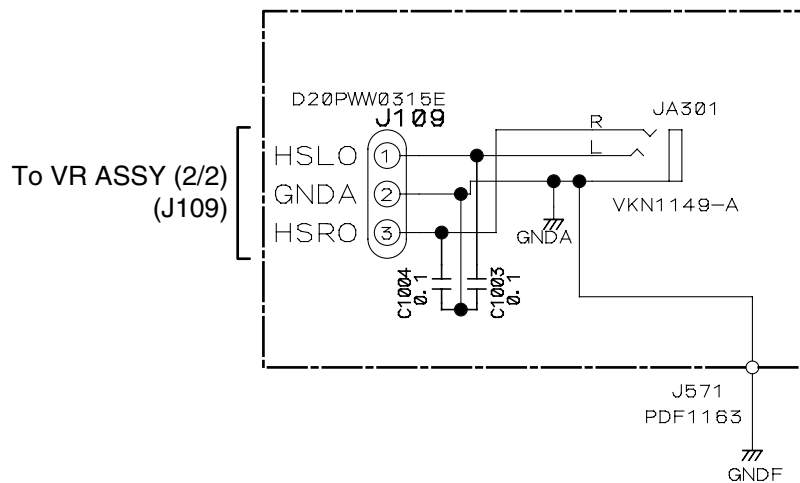




2.3 PHONE JACK and MIC JACK ASSYS

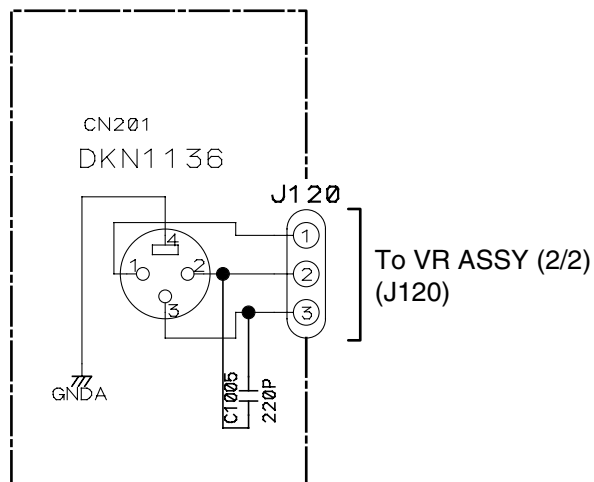
A

PHONE JACK ASSY (DWZ1144)



B

MIC JACK ASSY (DWG1145)












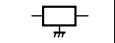
C

D

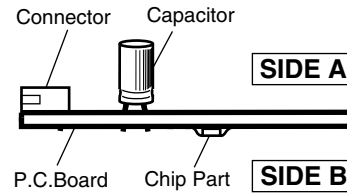
3. PCB CONNECTION DIAGRAM

NOTE FOR PCB DIAGRAMS :

1. Part numbers in PCB diagrams match those in the schematic diagrams.
2. A comparison between the main parts of PCB and schematic diagrams is shown below.

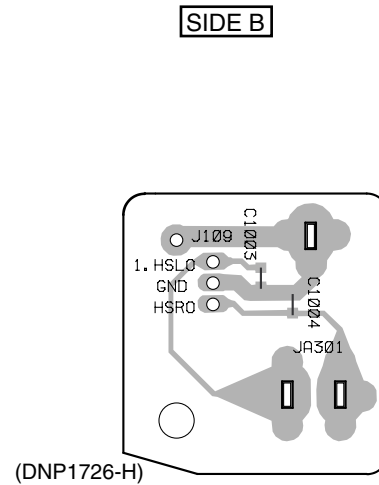
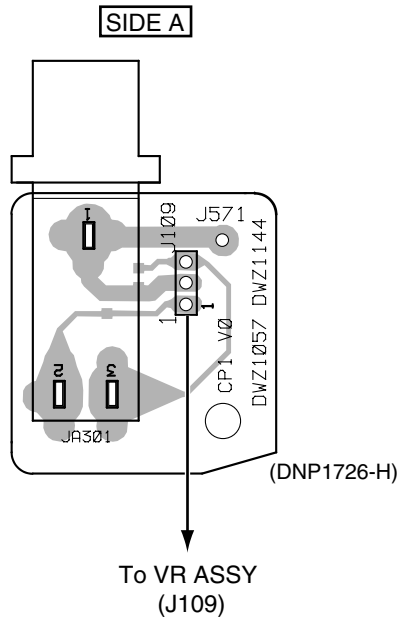
Symbol In PCB Diagrams	Symbol In Schematic Diagrams	Part Name
		Transistor
		Transistor with resistor
		Field effect transistor
		Resistor array
		3-terminal regulator

3. The parts mounted on this PCB include all necessary parts for several destinations.
For further information for respective destinations, be sure to check with the schematic diagram.
4. View point of PCB diagrams.

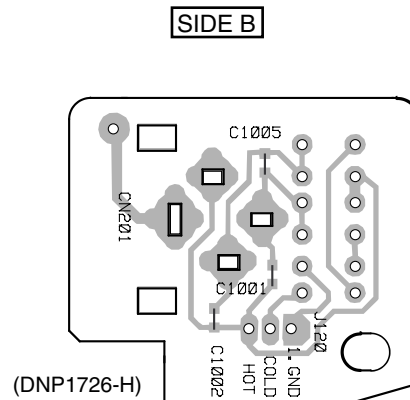
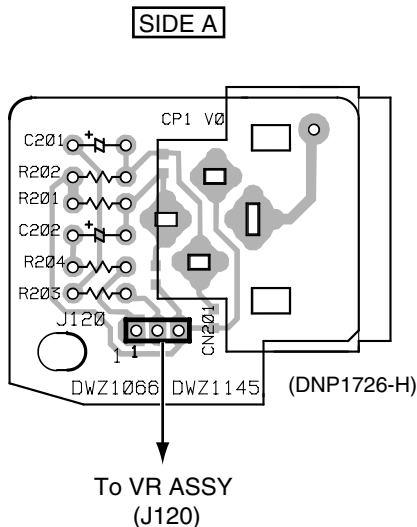


3.1 PHONE JACK and MIC JACK ASSYS

PHONE JACK ASSY



MIC JACK ASSY



4

D

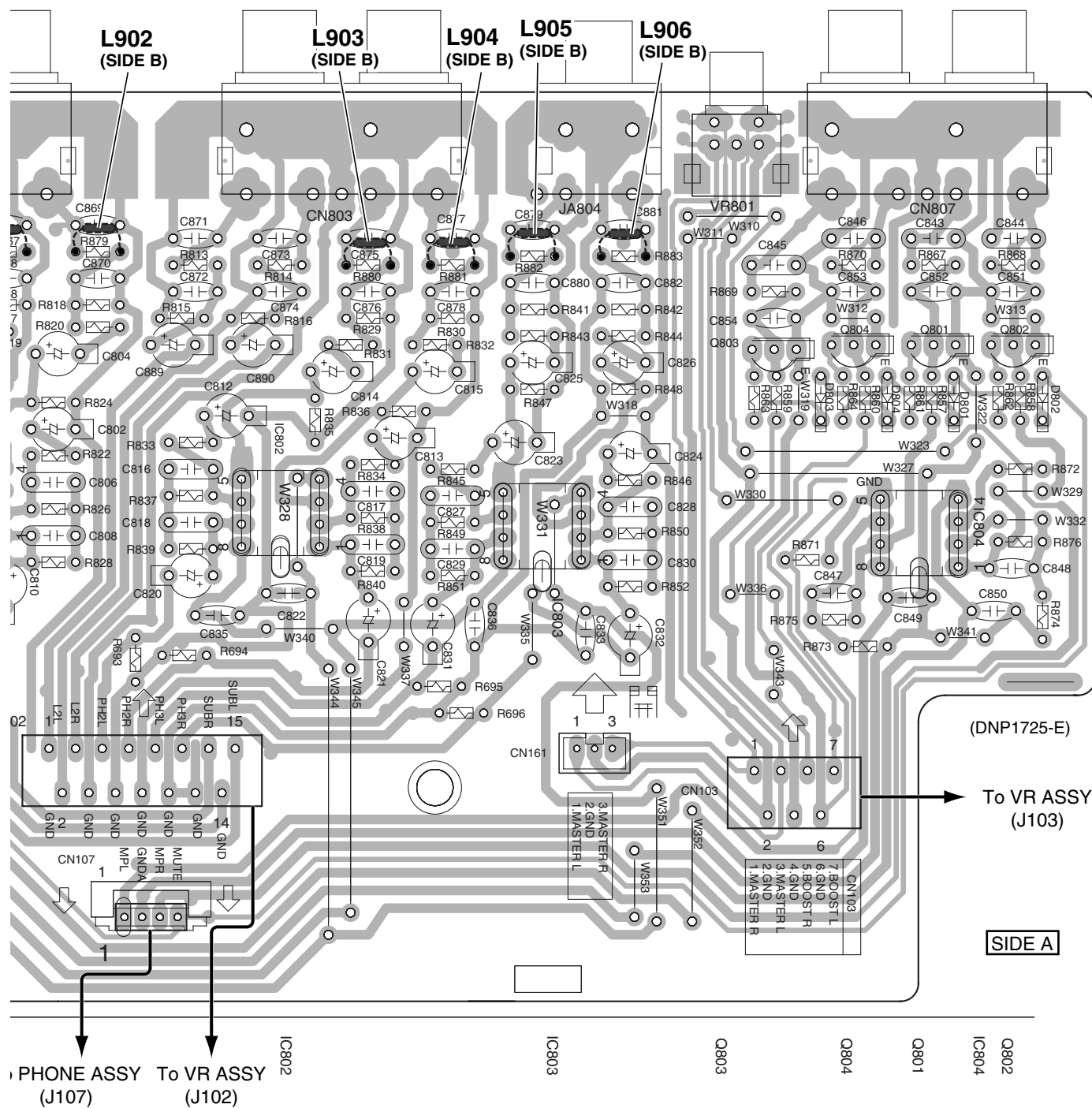


A

B

C

D



3.3 PHONE ASSY PHONE ASSY

