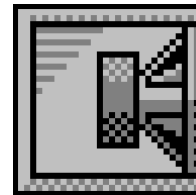


Custom Vented Box Design

By NeXuS3, Nexo



Box Properties

--Description--

Name:

Type: Vented Box

Shape: Prism, truncated edge

--Box Parameters--

Vb = 60.38 liters

Fb = 34.52 Hz

QL = 6.946

F3 = 31.62 Hz

Fill = minimal

--Vents--

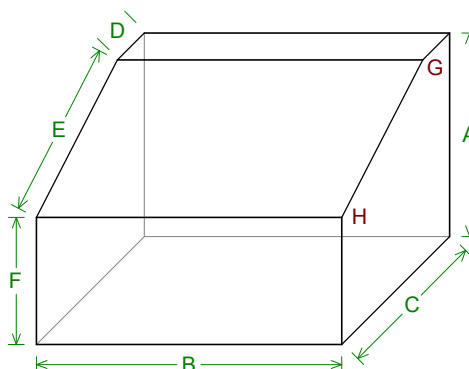
No. of Vents = 1

Vent shape = round

Vent ends = one flush

Dv = 106 mm

Lv = 300 mm



--External Dimensions--

A = 400 mm

B = 600 mm

C = 400 mm

D = 100 mm

E = 438.4 mm

F = 250 mm

--Internal Dimensions--

A = 364 mm

B = 564 mm

C = 364 mm

D = 77.75 mm

E = 320 mm

F = 220.9 mm

--Wall Thickness--

Wall = 18 mm

--Angles--

G = 153.4°

H = 116.6°

Driver Properties

--Description--

Name:

Type: Standard one-way driver

--Configuration--

No. of Drivers = 1

--Driver Parameters--

Fs = 38.5 Hz

Qms = 11.13

Vas = 49 liters

Xmax = 2.75 mm

Sd = 491 sq.cm

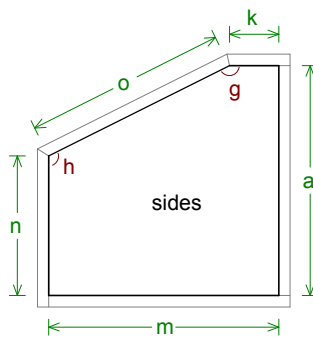
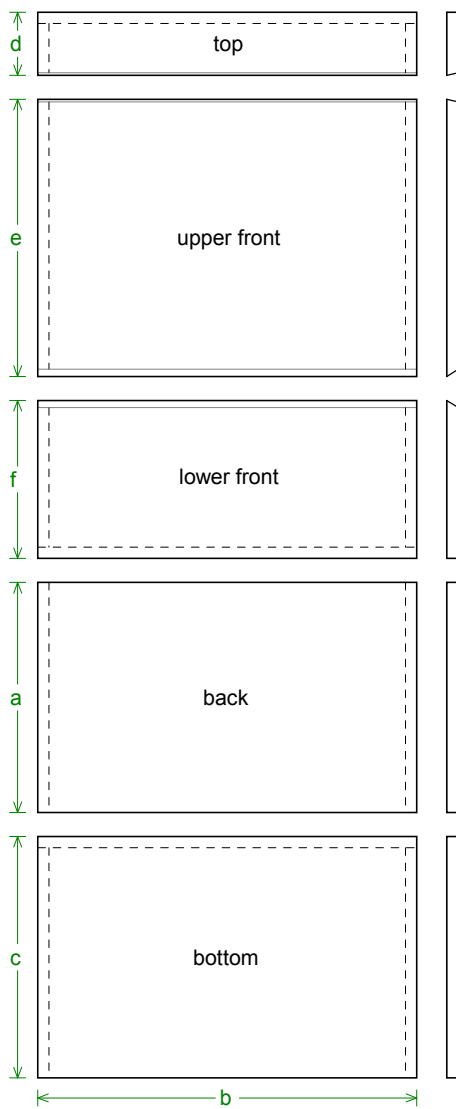
Qes = 0.65

Re = 3.6 ohms

Le = 1.5 mH

Z = 4 ohms

Pe = 250 watts



Box Parts

--Truncated Edge Prism Box Parts--

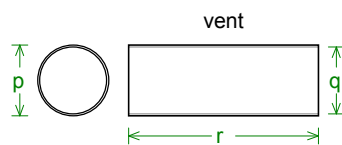
- 1 Top: height (d) = 100 mm
width (b) = 600, thickness = 18 mm
cut angle (front edge only) = 13.28°
- 1 Upper Front: height (e) = 438.4 mm
width (b) = 600, thickness = 18 mm
top edge cut angle = 13.28°
bottom edge cut angle = 31.72°
- 1 Lower Front: height (f) = 250 mm
width (b) = 600, thickness = 18 mm
cut angle (top edge only) = 31.72°
- 1 Back: height (a) = 364, width (b) = 600 mm
thickness = 18 mm
- 1 Bottom: height (c) = 382 mm
width (b) = 600, thickness = 18 mm
- 2 Sides: top depth (k) = 77.75 mm
height (a) = 364 mm
bottom depth (m) = 364 mm
lower front height (n) = 220.9 mm
front length (o) = 438.4 mm
thickness = 18 mm
Angle g = 153.4°, Angle h = 116.6°

--Vent Parts--

- 1 Duct: outside diameter (p) = 112.4 mm
inside diameter (q) = 106 mm
length (r) = 300 mm

--Driver Mounting--

Mounting: Flush





Wiring Diagram

